

Interviewing: June 17 - 19, 2018  
Sample: 1500 Adults nationwide online  
1004 registered voters nationwide online



# *The Economist/YouGov* Poll

## Weekly Tracking

For immediate release

**1. Presidential Job Approval – Historical**

Do you approve or disapprove of the way [President's name] is handling his job as President?

All Adults							
	<b>Total Approve</b>	<b>Total Disapprove</b>	Strongly Approve	Somewhat Approve	Somewhat Disapprove	Strongly Disapprove	Not Sure
June 15-19, 2018	41%	48%	23%	18%	11%	37%	11%
June 8-12, 2018	42%	48%	22%	20%	10%	38%	10%
June 1-5, 2018	39%	53%	23%	16%	13%	40%	9%
May 26-28, 2018	39%	49%	22%	17%	9%	40%	11%
May 19-21, 2018	38%	50%	20%	18%	12%	38%	11%
May 12-14, 2018	39%	50%	23%	16%	12%	38%	12%
May 5-7, 2018	42%	45%	23%	19%	9%	36%	12%
April 28-30, 2018	40%	50%	22%	18%	10%	40%	10%
April 21-23, 2018	38%	49%	21%	17%	12%	37%	13%
April 14-16, 2018	38%	53%	20%	18%	13%	40%	9%
One Year Ago	40%	49%	19%	21%	10%	39%	11%

Registered Voters							
	<b>Total Approve</b>	<b>Total Disapprove</b>	Strongly Approve	Somewhat Approve	Somewhat Disapprove	Strongly Disapprove	Not Sure
June 15-19, 2018	44%	50%	26%	18%	9%	41%	6%
June 8-12, 2018	45%	51%	28%	17%	9%	42%	3%
June 1-5, 2018	42%	54%	27%	15%	10%	44%	4%
May 26-28, 2018	45%	51%	29%	16%	8%	43%	4%
May 19-21, 2018	41%	54%	26%	15%	11%	43%	4%
May 12-14, 2018	44%	52%	28%	16%	10%	42%	4%
May 5-7, 2018	44%	52%	27%	17%	10%	42%	4%
April 28-30, 2018	44%	53%	26%	18%	8%	45%	4%
April 21-23, 2018	43%	53%	26%	17%	11%	42%	5%
April 14-16, 2018	42%	55%	25%	17%	11%	44%	3%
One Year Ago	43%	51%	22%	21%	9%	42%	6%

## Presidential Job Approval

"Do you approve or disapprove of the way Donald Trump is handling his job as President?"

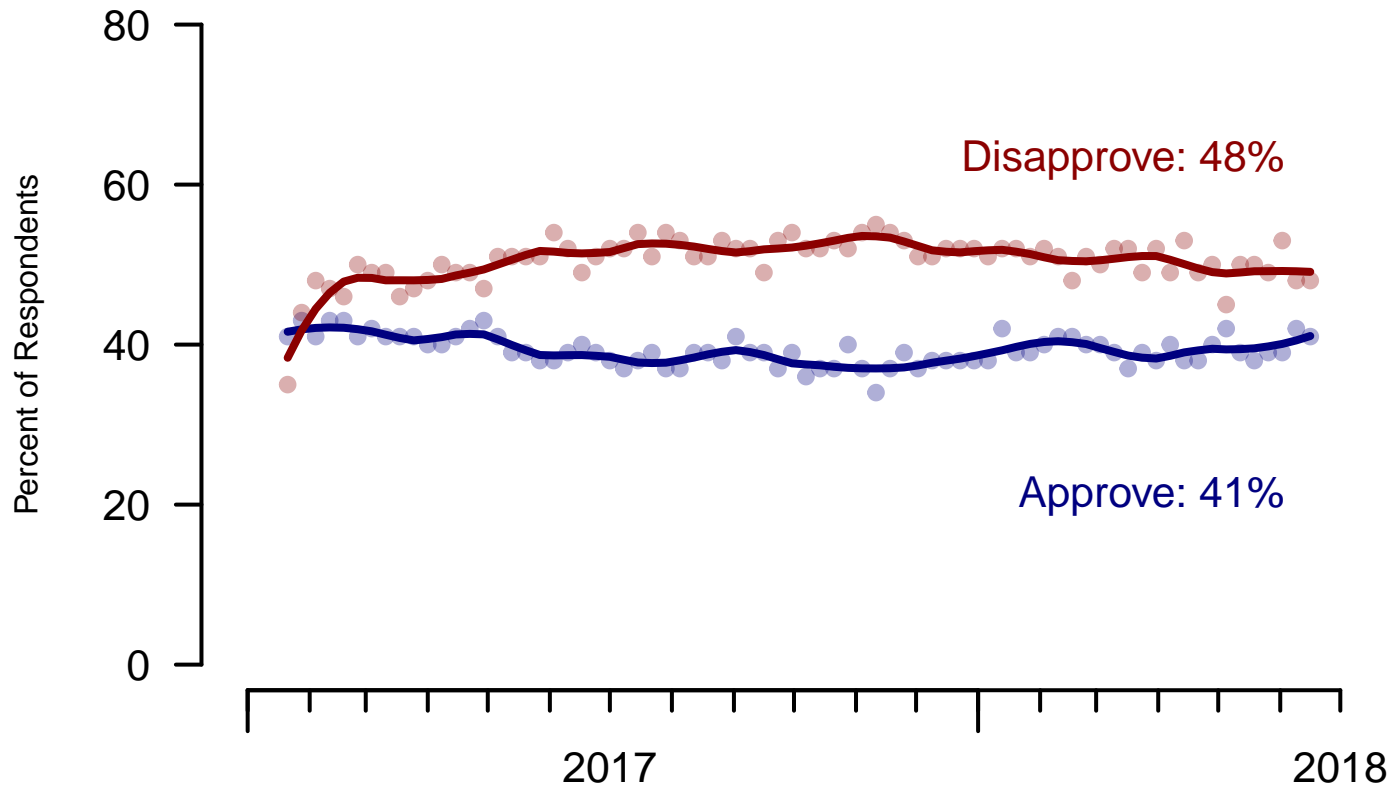


Figure 1: Trump Approval – All Adults

## Presidential Job Approval

"Do you approve or disapprove of the way Donald Trump is handling his job as President?"

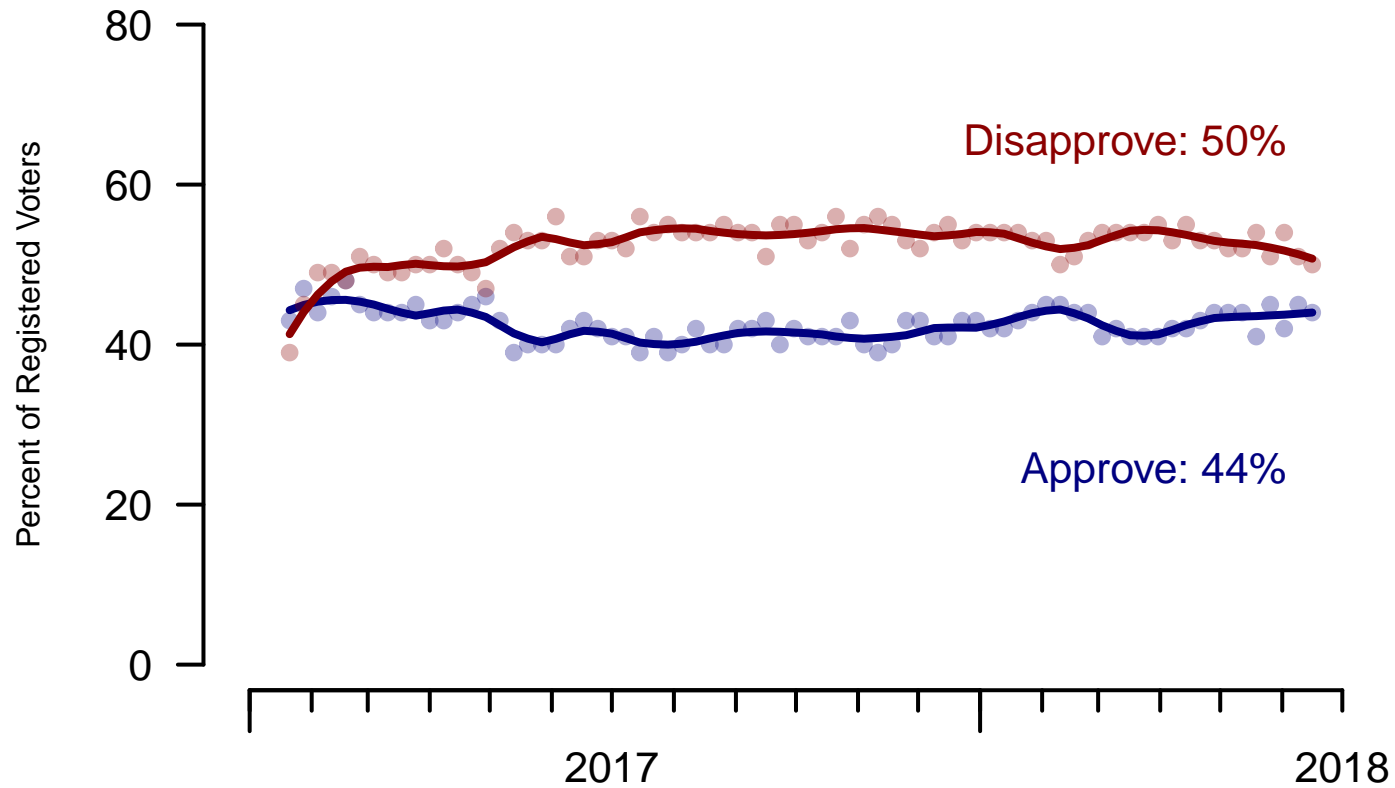


Figure 2: Trump Approval – Registered Voters

**2. President Trump Job Approval – This Week – All Adults**

Do you approve or disapprove of the way Donald Trump is handling his job as President?

	Age (4 category)					Race			Census Region			
	Total	Under 30	30-44	45-64	65+	White	Black	Hispanic	North-east	Mid-west	South	West
Strongly approve	23%	6%	21%	25%	39%	27%	7%	14%	18%	20%	27%	20%
Somewhat approve	18%	20%	18%	17%	20%	21%	7%	15%	19%	20%	19%	16%
Somewhat disapprove	11%	19%	11%	10%	4%	10%	12%	18%	13%	10%	11%	10%
Strongly disapprove	37%	34%	35%	40%	35%	33%	56%	39%	38%	39%	32%	43%
Not sure	11%	21%	15%	7%	3%	9%	19%	14%	13%	12%	11%	10%
Totals (Unweighted N)	100% (1,500)	100% (223)	100% (420)	100% (547)	100% (310)	100% (1,171)	100% (171)	100% (158)	100% (271)	100% (323)	100% (592)	100% (314)

	Party ID			Ideology			Gender		Family Income (3 category)			Prefer not to say	
	Total	Dem	Ind	Rep	Lib	Mod	Con	Male	Female	Under 50	50-100		100+
Strongly approve	23%	4%	17%	56%	4%	13%	51%	26%	20%	22%	22%	25%	26%
Somewhat approve	18%	9%	18%	30%	7%	20%	26%	19%	18%	17%	22%	21%	14%
Somewhat disapprove	11%	13%	13%	6%	7%	15%	9%	11%	11%	12%	12%	9%	5%
Strongly disapprove	37%	69%	31%	6%	76%	34%	9%	36%	37%	35%	35%	44%	38%
Not sure	11%	5%	21%	2%	6%	18%	6%	8%	14%	14%	9%	2%	16%
Totals (Unweighted N)	100% (1,500)	100% (525)	100% (590)	100% (385)	100% (422)	100% (596)	100% (482)	100% (668)	100% (832)	100% (685)	100% (390)	100% (263)	100% (162)

**3. Approval of U.S. Congress – Historical**

Overall, do you approve or disapprove of the way that the United States Congress is handling its job?

All Adults								
	<b>Total Approve</b>	<b>Total Disapprove</b>	Strongly Approve	Somewhat Approve	Neutral	Somewhat Disapprove	Strongly Disapprove	Not Sure
June 15-19, 2018	12%	56%	4%	8%	16%	18%	38%	17%
June 8-12, 2018	13%	57%	4%	9%	15%	21%	36%	16%
June 1-5, 2018	11%	59%	3%	8%	16%	23%	36%	14%
May 26-28, 2018	10%	60%	3%	7%	14%	22%	38%	16%
May 19-21, 2018	10%	59%	2%	8%	14%	25%	34%	17%
May 12-14, 2018	11%	59%	3%	8%	14%	25%	34%	15%
May 5-7, 2018	12%	57%	3%	9%	16%	19%	38%	16%
April 28-30, 2018	11%	60%	4%	7%	14%	24%	36%	15%
April 21-23, 2018	10%	58%	2%	8%	14%	23%	35%	18%
April 14-16, 2018	12%	58%	3%	9%	14%	21%	37%	16%
One Year Ago	12%	55%	3%	9%	16%	22%	33%	17%

Registered Voters								
	<b>Total Approve</b>	<b>Total Disapprove</b>	Strongly Approve	Somewhat Approve	Neutral	Somewhat Disapprove	Strongly Disapprove	Not Sure
June 15-19, 2018	10%	66%	3%	7%	14%	20%	46%	10%
June 8-12, 2018	13%	66%	3%	10%	14%	25%	41%	7%
June 1-5, 2018	11%	69%	3%	8%	13%	27%	42%	7%
May 26-28, 2018	9%	70%	2%	7%	13%	25%	45%	8%
May 19-21, 2018	9%	68%	2%	7%	13%	28%	40%	10%
May 12-14, 2018	11%	68%	3%	8%	14%	28%	40%	7%
May 5-7, 2018	9%	67%	2%	7%	14%	23%	44%	10%
April 28-30, 2018	10%	69%	4%	6%	12%	25%	44%	8%
April 21-23, 2018	10%	68%	2%	8%	13%	26%	42%	9%
April 14-16, 2018	11%	67%	3%	8%	13%	23%	44%	9%
One Year Ago	12%	61%	3%	9%	17%	23%	38%	11%

### Congress Approval

"Do you approve of the way the U.S. Congress is handling its job?"

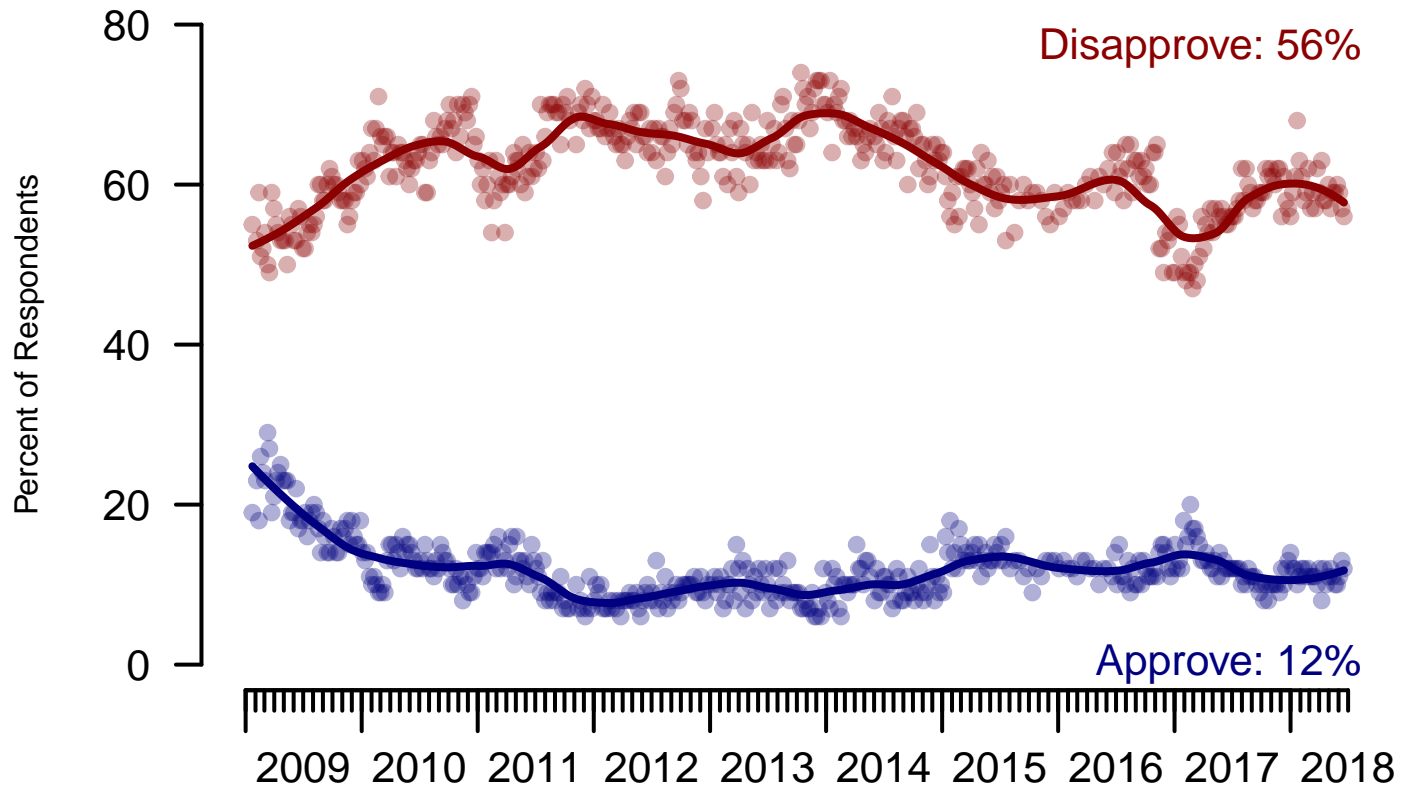


Figure 3: Congress Approval – All Adults

## Congress Approval

"Do you approve of the way the  
U.S. Congress is handling its job?"

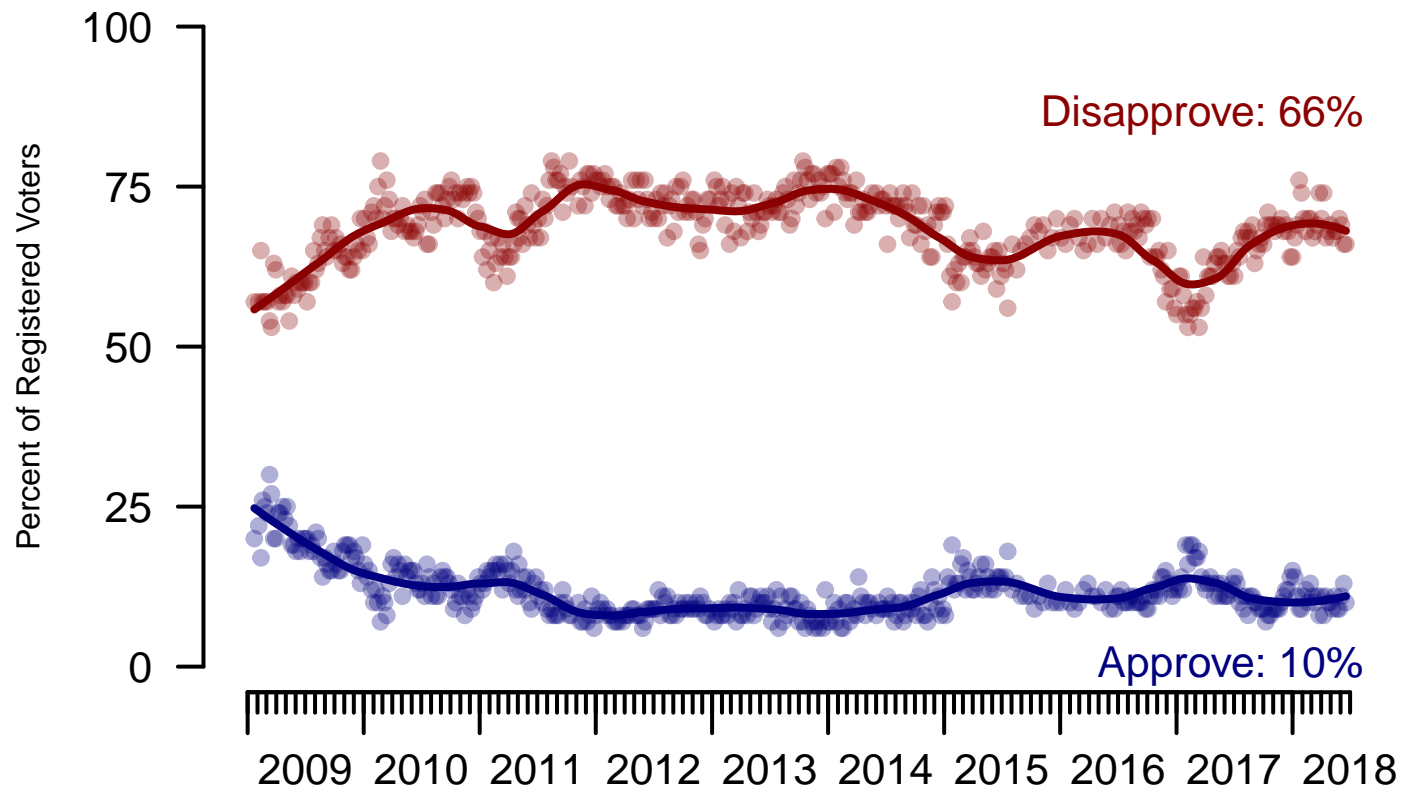


Figure 4: Congress Approval – Registered Voters

**4. Approval of U.S. Congress – This Week – All Adults**

Overall, do you approve or disapprove of the way that the United States Congress is handling its job?

	Age (4 category)					Race			Census Region			
	Total	Under 30	30-44	45-64	65+	White	Black	Hispanic	North-east	Mid-west	South	West
Strongly approve	4%	4%	6%	3%	2%	3%	4%	5%	5%	1%	4%	2%
Somewhat approve	8%	9%	9%	5%	8%	8%	4%	13%	8%	7%	8%	7%
Neither approve nor disapprove	16%	19%	15%	18%	9%	14%	18%	24%	12%	14%	19%	15%
Somewhat disapprove	18%	16%	14%	18%	26%	20%	17%	10%	19%	18%	19%	18%
Strongly disapprove	38%	22%	33%	44%	50%	40%	35%	29%	37%	40%	35%	42%
Not sure	17%	29%	23%	12%	5%	16%	23%	19%	18%	20%	15%	16%
Totals (Unweighted N)	100% (1,492)	100% (220)	100% (418)	100% (545)	100% (309)	100% (1,166)	100% (170)	100% (156)	100% (270)	100% (322)	100% (589)	100% (311)

	Party ID			Ideology			Gender		Family Income (3 category)				
	Total	Dem	Ind	Rep	Lib	Mod	Con	Male	Female	Under 50	50-100	100+	Prefer not to say
Strongly approve	4%	3%	2%	6%	3%	3%	4%	5%	2%	4%	2%	5%	4%
Somewhat approve	8%	6%	4%	15%	3%	6%	14%	9%	7%	8%	10%	6%	3%
Neither approve nor disapprove	16%	15%	15%	18%	12%	20%	13%	14%	17%	18%	17%	6%	15%
Somewhat disapprove	18%	15%	17%	24%	15%	14%	27%	19%	18%	17%	19%	25%	16%
Strongly disapprove	38%	50%	35%	28%	61%	30%	30%	43%	33%	32%	39%	51%	42%
Not sure	17%	11%	26%	9%	6%	27%	11%	11%	23%	21%	13%	6%	20%
Totals (Unweighted N)	100% (1,492)	100% (521)	100% (587)	100% (384)	100% (420)	100% (591)	100% (481)	100% (665)	100% (827)	100% (682)	100% (386)	100% (262)	100% (162)

**5. Direction of country – Historical**

Would you say things in this country today are...

	All Adults		
	Right Direction	Wrong Track	Not Sure
June 15-19, 2018	36%	48%	16%
June 8-12, 2018	34%	51%	15%
June 1-5, 2018	36%	51%	13%
May 26-28, 2018	34%	52%	14%
May 19-21, 2018	33%	52%	15%
May 12-14, 2018	35%	49%	16%
May 5-7, 2018	36%	49%	15%
April 28-30, 2018	34%	52%	14%
April 21-23, 2018	32%	53%	15%
April 14-16, 2018	32%	55%	13%
One Year Ago	30%	52%	18%

	Registered Voters		
	Right Direction	Wrong Track	Not Sure
June 15-19, 2018	39%	51%	10%
June 8-12, 2018	39%	53%	8%
June 1-5, 2018	38%	54%	8%
May 26-28, 2018	37%	54%	8%
May 19-21, 2018	37%	53%	10%
May 12-14, 2018	42%	48%	10%
May 5-7, 2018	38%	51%	11%
April 28-30, 2018	38%	51%	11%
April 21-23, 2018	36%	54%	9%
April 14-16, 2018	34%	56%	9%
One Year Ago	30%	56%	14%

## Direction of Country

"Would you say things in this country today are generally headed in the right direction or off on the wrong track?"

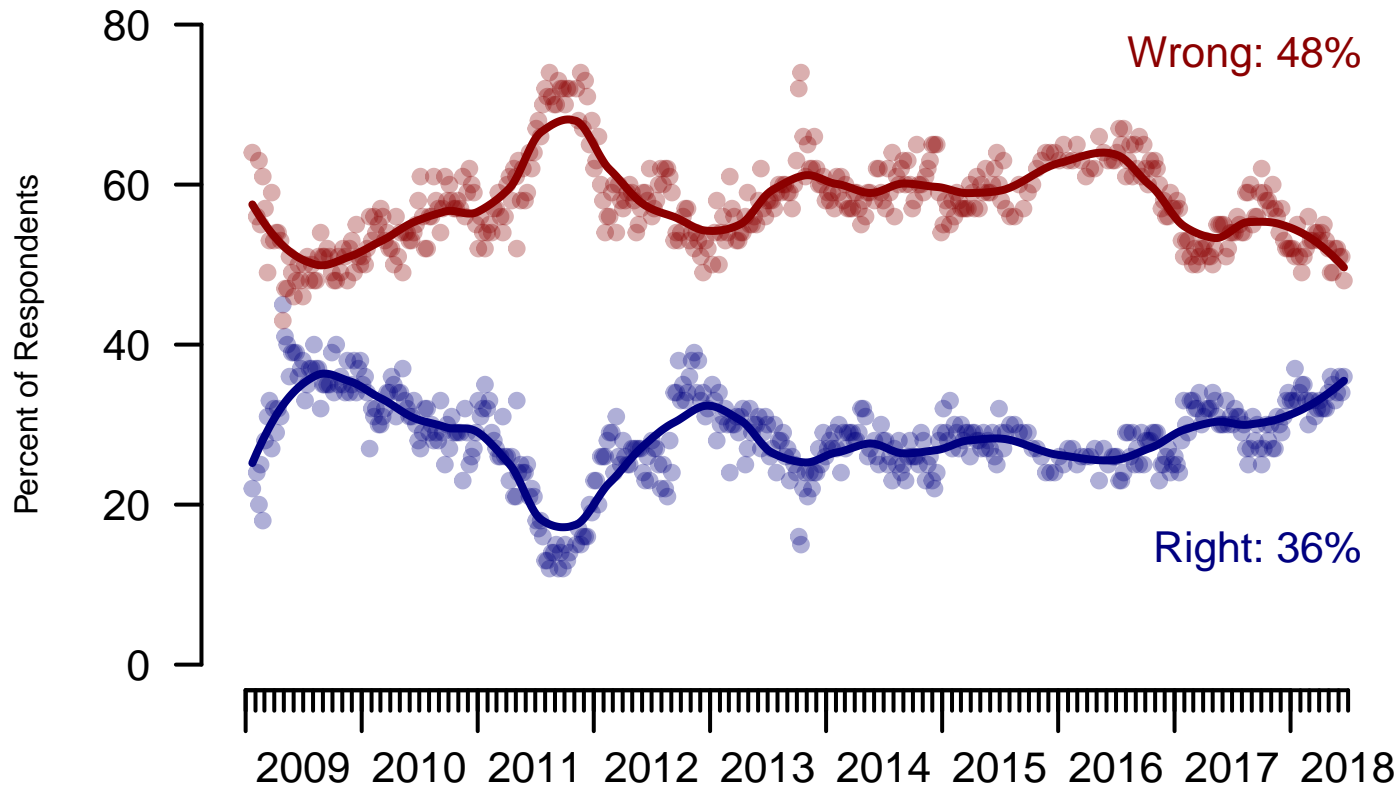


Figure 5: Direction of Country – All Adults

## Direction of Country

"Would you say things in this country today are generally headed in the right direction or off on the wrong track?"

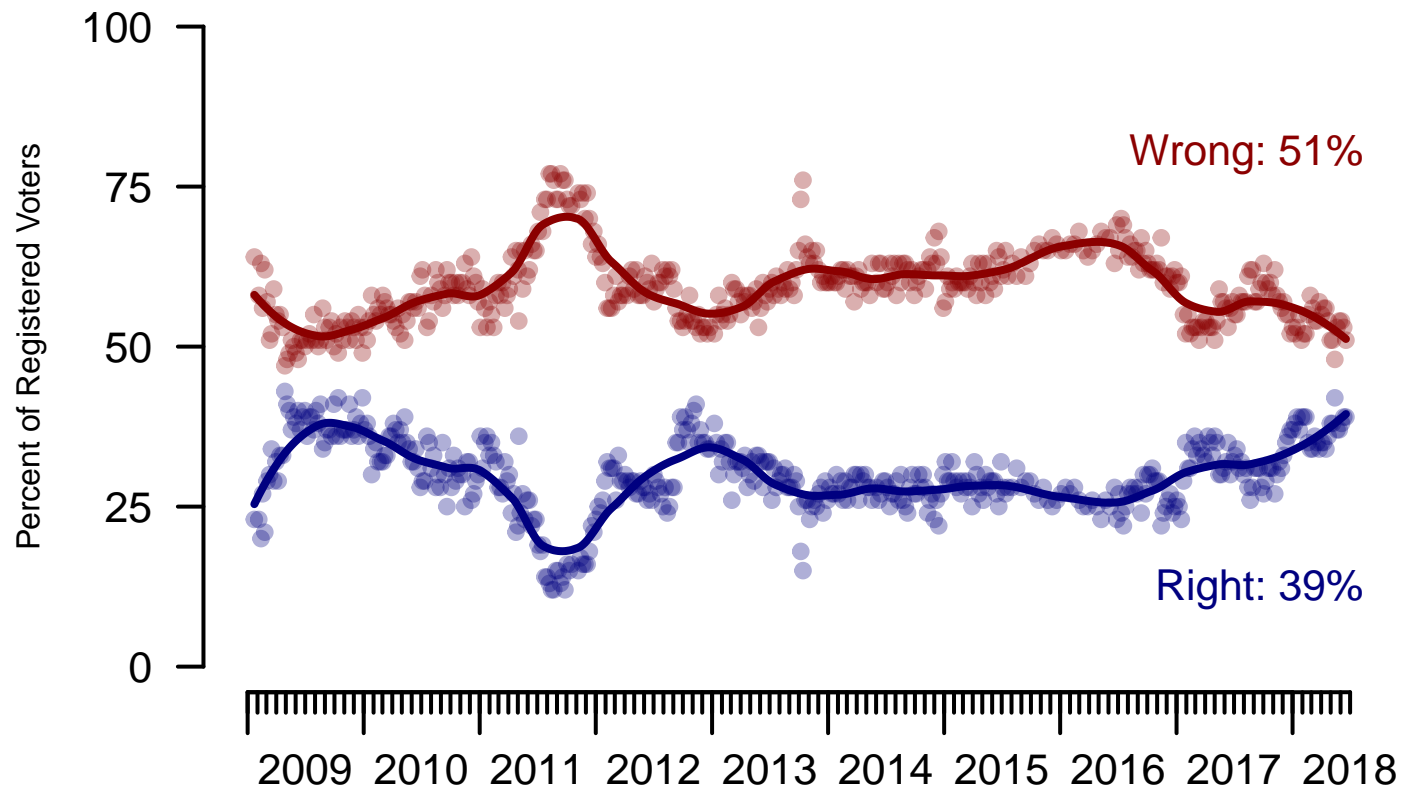


Figure 6: Direction of Country – Registered Voters

**6. Direction of Country – This Week – All Adults**

Would you say things in this country today are...

	Age (4 category)					Race			Census Region			
	Total	Under 30	30-44	45-64	65+	White	Black	Hispanic	North-east	Mid-west	South	West
Generally headed in the right direction	36%	27%	32%	40%	46%	40%	16%	37%	32%	34%	41%	33%
Off on the wrong track	48%	51%	47%	49%	45%	46%	67%	41%	47%	51%	45%	52%
Not sure	16%	22%	21%	11%	10%	14%	18%	22%	21%	15%	14%	15%
Totals (Unweighted N)	100% (1,500)	100% (223)	100% (420)	100% (547)	100% (310)	100% (1,171)	100% (171)	100% (158)	100% (271)	100% (323)	100% (592)	100% (314)

	Party ID			Ideology			Gender		Family Income (3 category)				
	Total	Dem	Ind	Rep	Lib	Mod	Con	Male	Female	Under 50	50-100	100+	Prefer not to say
Generally headed in the right direction	36%	15%	31%	71%	9%	31%	65%	41%	32%	33%	41%	42%	35%
Off on the wrong track	48%	73%	47%	20%	80%	46%	26%	45%	51%	48%	46%	51%	48%
Not sure	16%	12%	22%	9%	11%	23%	9%	14%	17%	18%	13%	8%	17%
Totals (Unweighted N)	100% (1,500)	100% (525)	100% (590)	100% (385)	100% (422)	100% (596)	100% (482)	100% (668)	100% (832)	100% (685)	100% (390)	100% (263)	100% (162)

**The Economist/YouGov Poll**  
June 17 - 19, 2018



<b>Sponsorship</b>	<i>The Economist</i>
<b>Fieldwork</b>	YouGov
<b>Interviewing Dates</b>	June 17 - 19, 2018
<b>Target population</b>	U.S. citizens, aged 18 and over.
<b>Sampling method</b>	Respondents were selected from YouGov's opt-in Internet panel using sample matching. A random sample (stratified by age, gender, race, education, and region) was selected from the 2014 American Community Study. Voter registration was imputed from the November 2014 Current Population Survey Registration and Voting Supplement.
<b>Weighting</b>	The sample was weighted based on age, gender, race, education, and 2016 Presidential vote. The weights range from 0.14 to 5.98, with a mean of one and a standard deviation of 0.7.
<b>Number of respondents</b>	1500
<b>Margin of error</b>	± 3% (adjusted for weighting)
<b>Margin of error (Registered Voters)</b>	± 3.2% (adjusted for weighting)
<b>Survey mode</b>	Web-based interviews
<b>Full results</b>	Available online at <a href="http://today.yougov.com/news/categories/economist/">http://today.yougov.com/news/categories/economist/</a> .