

Interviewing: September 23 - 25, 2018  
Sample: 1500 Adults nationwide online  
1004 registered voters nationwide online



# *The Economist/YouGov* Poll

## Weekly Tracking

For immediate release

**1. Presidential Job Approval – Historical**

Do you approve or disapprove of the way [President's name] is handling his job as President?

	All Adults						
	Total Approve	Total Disapprove	Strongly Approve	Somewhat Approve	Somewhat Disapprove	Strongly Disapprove	Not Sure
September 21-25, 2018	40%	50%	23%	17%	10%	40%	11%
September 14-18, 2018	41%	50%	23%	18%	11%	39%	9%
September 7-11, 2018	42%	48%	24%	18%	10%	38%	10%
September 1-3, 2018	38%	53%	22%	16%	11%	42%	9%
August 25-27, 2018	41%	48%	24%	17%	10%	38%	11%
August 18-20, 2018	41%	49%	21%	20%	12%	37%	10%
August 11-13, 2018	42%	49%	24%	18%	10%	39%	9%
August 4-6, 2018	40%	49%	22%	18%	9%	40%	11%
July 28-30, 2018	39%	51%	22%	17%	10%	41%	10%
July 21-23, 2018	41%	50%	22%	19%	11%	39%	9%
One Year Ago	37%	53%	19%	18%	12%	41%	10%

	Registered Voters						
	Total Approve	Total Disapprove	Strongly Approve	Somewhat Approve	Somewhat Disapprove	Strongly Disapprove	Not Sure
September 21-25, 2018	44%	53%	27%	17%	8%	45%	3%
September 14-18, 2018	44%	53%	28%	16%	9%	44%	3%
September 7-11, 2018	44%	52%	28%	16%	9%	43%	4%
September 1-3, 2018	43%	54%	27%	16%	10%	44%	3%
August 25-27, 2018	43%	52%	27%	16%	8%	44%	5%
August 18-20, 2018	44%	52%	26%	18%	9%	43%	5%
August 11-13, 2018	46%	50%	29%	17%	8%	42%	4%
August 4-6, 2018	44%	51%	29%	15%	7%	44%	4%
July 28-30, 2018	43%	53%	27%	16%	9%	44%	4%
July 21-23, 2018	43%	54%	26%	17%	10%	44%	4%
One Year Ago	40%	55%	22%	18%	10%	45%	5%

## Presidential Job Approval

"Do you approve or disapprove of the way Donald Trump is handling his job as President?"

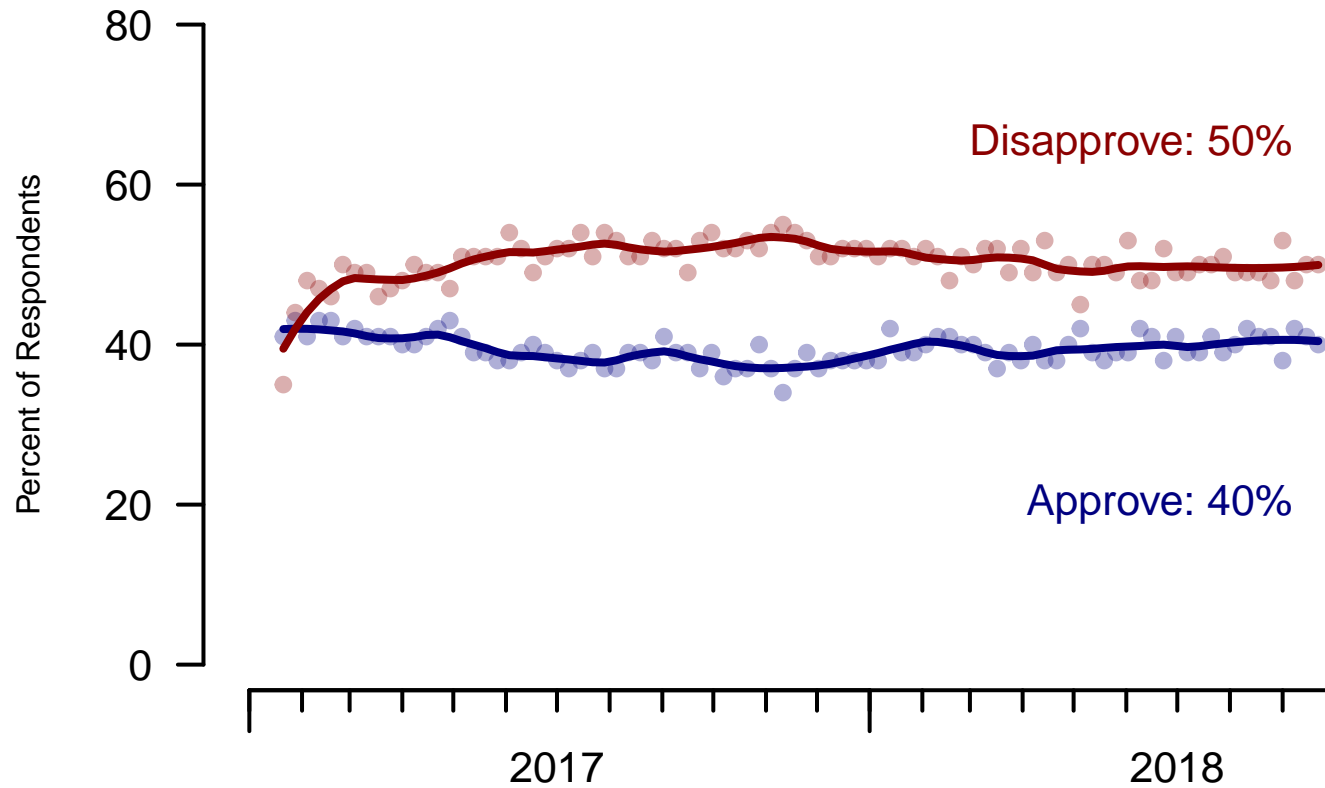


Figure 1: Trump Approval – All Adults

## Presidential Job Approval

"Do you approve or disapprove of the way Donald Trump is handling his job as President?"

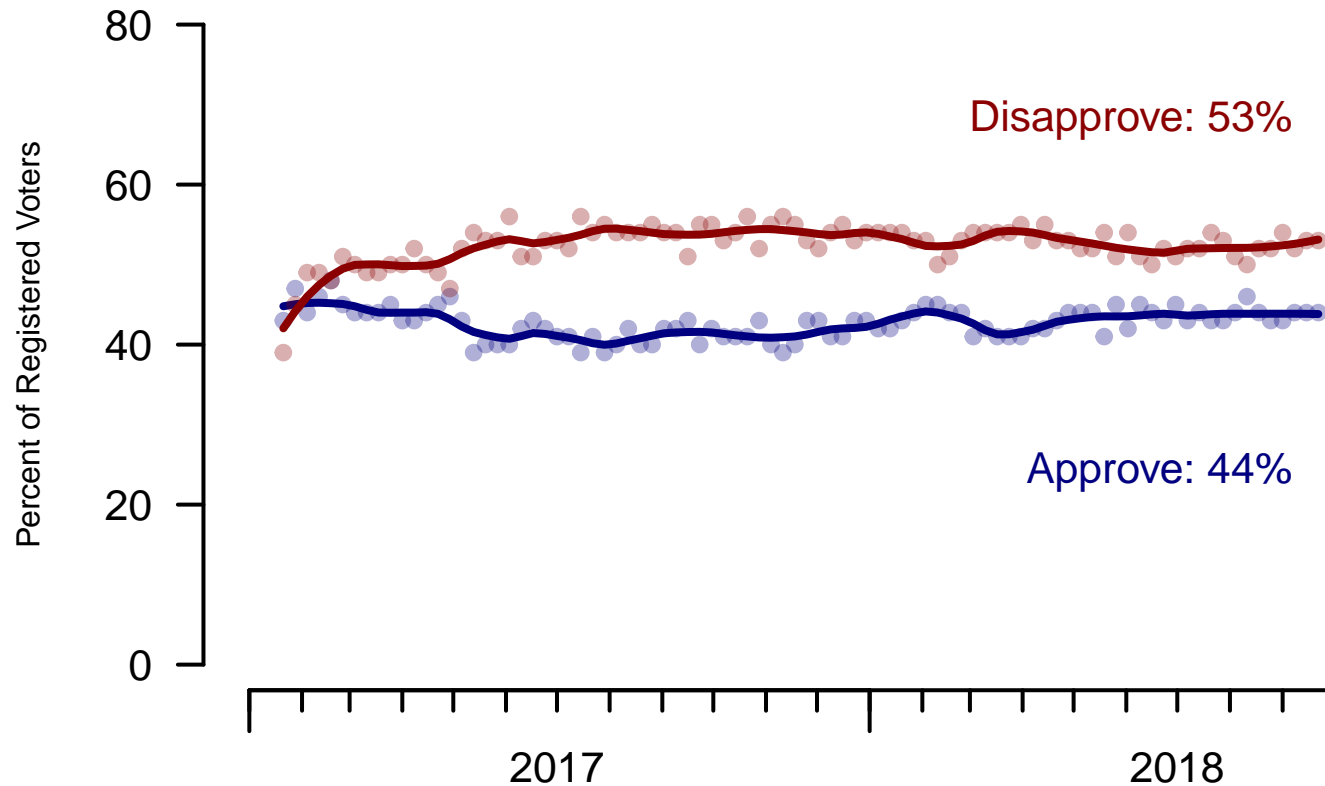


Figure 2: Trump Approval – Registered Voters

**2. President Trump Job Approval – This Week – All Adults**

Do you approve or disapprove of the way Donald Trump is handling his job as President?

	Age (4 category)					Race			Census Region			
	Total	Under 30	30-44	45-64	65+	White	Black	Hispanic	North-east	Mid-west	South	West
Strongly approve	23%	9%	18%	25%	39%	28%	5%	9%	18%	26%	24%	21%
Somewhat approve	17%	20%	21%	17%	11%	18%	10%	19%	15%	21%	19%	13%
Somewhat disapprove	10%	14%	9%	9%	7%	9%	12%	10%	13%	7%	8%	12%
Strongly disapprove	40%	36%	39%	41%	42%	37%	55%	39%	44%	36%	38%	43%
Not sure	11%	20%	13%	8%	1%	8%	18%	23%	9%	10%	11%	12%
Totals (Unweighted N)	100% (1,500)	100% (248)	100% (423)	100% (521)	100% (308)	100% (1,157)	100% (176)	100% (167)	100% (266)	100% (346)	100% (577)	100% (311)

	Party ID			Ideology			Gender		Family Income (3 category)			Prefer not to say	
	Total	Dem	Ind	Rep	Lib	Mod	Con	Male	Female	Under 50	50-100		100+
Strongly approve	23%	4%	19%	55%	2%	11%	54%	26%	20%	19%	25%	26%	26%
Somewhat approve	17%	9%	18%	28%	6%	17%	26%	20%	15%	15%	24%	17%	14%
Somewhat disapprove	10%	10%	10%	8%	8%	14%	5%	8%	11%	11%	9%	8%	7%
Strongly disapprove	40%	73%	33%	7%	80%	38%	12%	37%	43%	41%	37%	46%	34%
Not sure	11%	5%	20%	2%	4%	19%	4%	10%	12%	13%	5%	3%	19%
Totals (Unweighted N)	100% (1,500)	100% (519)	100% (585)	100% (396)	100% (408)	100% (582)	100% (510)	100% (679)	100% (821)	100% (667)	100% (406)	100% (242)	100% (185)

**3. Approval of U.S. Congress – Historical**

Overall, do you approve or disapprove of the way that the United States Congress is handling its job?

All Adults

	<b>Total Approve</b>	<b>Total Disapprove</b>	Strongly Approve	Somewhat Approve	Neutral	Somewhat Disapprove	Strongly Disapprove	Not Sure
September 21-25, 2018	11%	55%	2%	9%	18%	21%	34%	16%
September 14-18, 2018	14%	56%	4%	10%	14%	20%	36%	16%
September 7-11, 2018	13%	57%	3%	10%	15%	23%	34%	16%
September 1-3, 2018	11%	60%	3%	8%	13%	24%	36%	17%
August 25-27, 2018	15%	57%	4%	11%	14%	24%	33%	15%
August 18-20, 2018	11%	57%	2%	9%	17%	25%	32%	15%
August 11-13, 2018	13%	59%	4%	9%	14%	22%	37%	14%
August 4-6, 2018	13%	59%	3%	10%	14%	22%	37%	14%
July 28-30, 2018	11%	60%	3%	8%	13%	21%	39%	15%
July 21-23, 2018	11%	58%	2%	9%	17%	22%	36%	14%
One Year Ago	9%	59%	2%	7%	15%	21%	38%	16%

Registered Voters

	<b>Total Approve</b>	<b>Total Disapprove</b>	Strongly Approve	Somewhat Approve	Neutral	Somewhat Disapprove	Strongly Disapprove	Not Sure
September 21-25, 2018	12%	66%	2%	10%	14%	24%	42%	8%
September 14-18, 2018	15%	65%	4%	11%	12%	23%	42%	8%
September 7-11, 2018	13%	66%	3%	10%	14%	24%	42%	7%
September 1-3, 2018	11%	69%	2%	9%	12%	26%	43%	8%
August 25-27, 2018	14%	67%	3%	11%	12%	26%	41%	8%
August 18-20, 2018	12%	66%	3%	9%	15%	26%	40%	8%
August 11-13, 2018	11%	70%	3%	8%	11%	26%	44%	8%
August 4-6, 2018	12%	68%	2%	10%	12%	25%	43%	7%
July 28-30, 2018	12%	70%	3%	9%	12%	23%	47%	6%
July 21-23, 2018	9%	71%	1%	8%	12%	26%	45%	8%
One Year Ago	9%	67%	2%	7%	14%	23%	44%	11%

### Congress Approval

"Do you approve of the way the  
U.S. Congress is handling its job?"

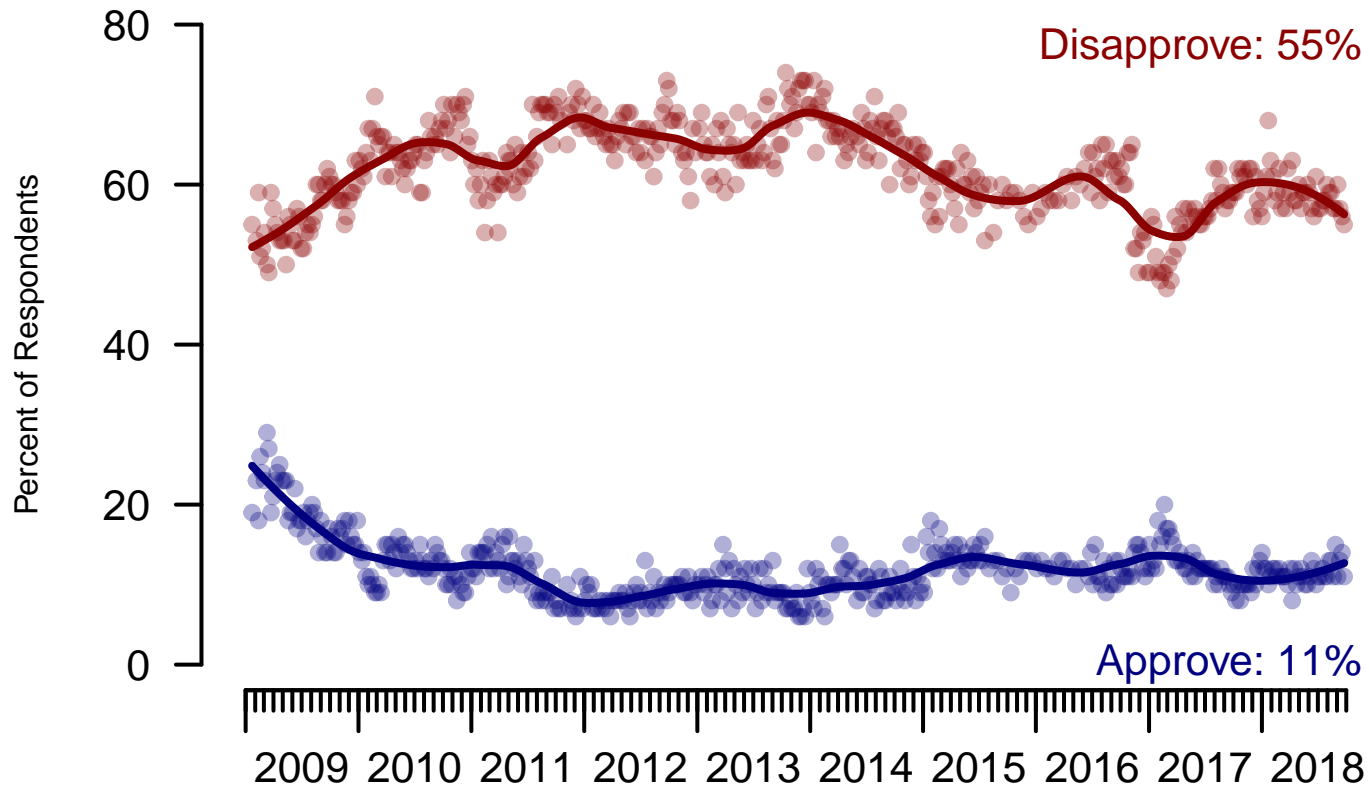


Figure 3: Congress Approval – All Adults

## Congress Approval

"Do you approve of the way the  
U.S. Congress is handling its job?"

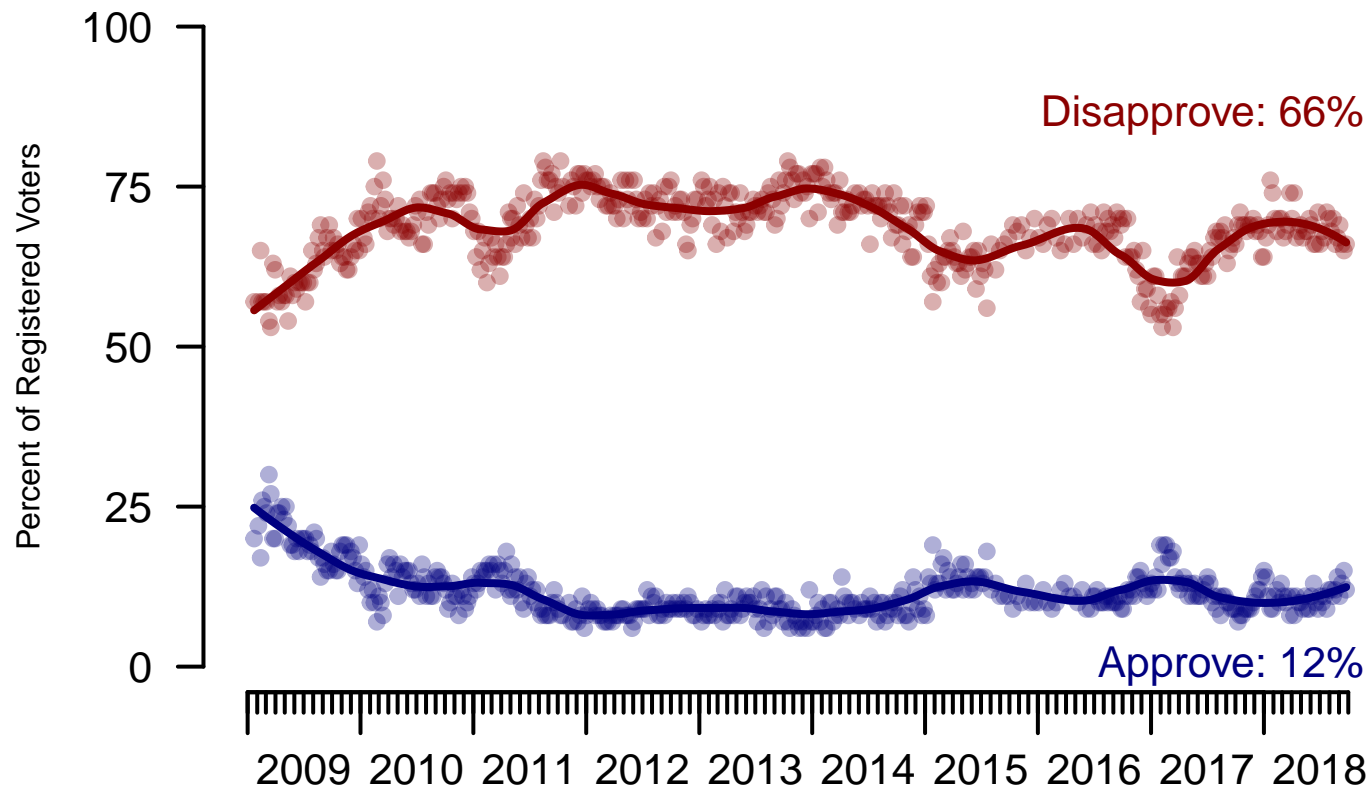


Figure 4: Congress Approval – Registered Voters

**4. Approval of U.S. Congress – This Week – All Adults**

Overall, do you approve or disapprove of the way that the United States Congress is handling its job?

	Age (4 category)					Race			Census Region			
	Total	Under 30	30-44	45-64	65+	White	Black	Hispanic	North-east	Mid-west	South	West
Strongly approve	2%	3%	3%	2%	1%	2%	2%	2%	3%	1%	2%	2%
Somewhat approve	9%	9%	11%	9%	9%	10%	6%	9%	8%	10%	12%	6%
Neither approve nor disapprove	18%	25%	19%	17%	10%	15%	24%	26%	23%	18%	16%	15%
Somewhat disapprove	21%	14%	17%	25%	26%	22%	17%	17%	17%	25%	20%	21%
Strongly disapprove	34%	22%	29%	37%	50%	36%	31%	26%	31%	34%	33%	40%
Not sure	16%	28%	21%	11%	5%	14%	21%	20%	18%	12%	17%	16%
Totals (Unweighted N)	100% (1,491)	100% (246)	100% (418)	100% (519)	100% (308)	100% (1,152)	100% (174)	100% (165)	100% (264)	100% (345)	100% (574)	100% (308)

	Party ID			Ideology			Gender		Family Income (3 category)				
	Total	Dem	Ind	Rep	Lib	Mod	Con	Male	Female	Under 50	50-100	100+	Prefer not to say
Strongly approve	2%	2%	1%	4%	3%	1%	3%	3%	1%	3%	1%	2%	1%
Somewhat approve	9%	6%	6%	20%	2%	7%	18%	9%	9%	9%	11%	12%	6%
Neither approve nor disapprove	18%	18%	16%	19%	13%	21%	17%	18%	17%	20%	18%	9%	18%
Somewhat disapprove	21%	17%	21%	26%	17%	16%	31%	20%	21%	20%	23%	21%	19%
Strongly disapprove	34%	49%	30%	22%	59%	29%	22%	37%	32%	29%	37%	47%	35%
Not sure	16%	8%	25%	9%	6%	26%	9%	12%	19%	19%	10%	9%	21%
Totals (Unweighted N)	100% (1,491)	100% (517)	100% (578)	100% (396)	100% (406)	100% (577)	100% (508)	100% (677)	100% (814)	100% (665)	100% (404)	100% (241)	100% (181)

**5. Direction of country – Historical**

Would you say things in this country today are...

	All Adults		
	Right Direction	Wrong Track	Not Sure
September 21-25, 2018	36%	50%	14%
September 14-18, 2018	39%	48%	13%
September 7-11, 2018	37%	49%	14%
September 1-3, 2018	35%	52%	13%
August 25-27, 2018	38%	48%	14%
August 18-20, 2018	37%	49%	15%
August 11-13, 2018	36%	52%	11%
August 4-6, 2018	37%	51%	12%
July 28-30, 2018	36%	51%	13%
July 21-23, 2018	36%	52%	12%
One Year Ago	27%	59%	14%

	Registered Voters		
	Right Direction	Wrong Track	Not Sure
September 21-25, 2018	38%	53%	8%
September 14-18, 2018	42%	50%	7%
September 7-11, 2018	40%	53%	7%
September 1-3, 2018	39%	54%	7%
August 25-27, 2018	38%	52%	10%
August 18-20, 2018	40%	50%	11%
August 11-13, 2018	40%	52%	7%
August 4-6, 2018	41%	52%	7%
July 28-30, 2018	40%	52%	7%
July 21-23, 2018	38%	53%	9%
One Year Ago	28%	60%	12%

## Direction of Country

"Would you say things in this country today are generally headed in the right direction or off on the wrong track?"

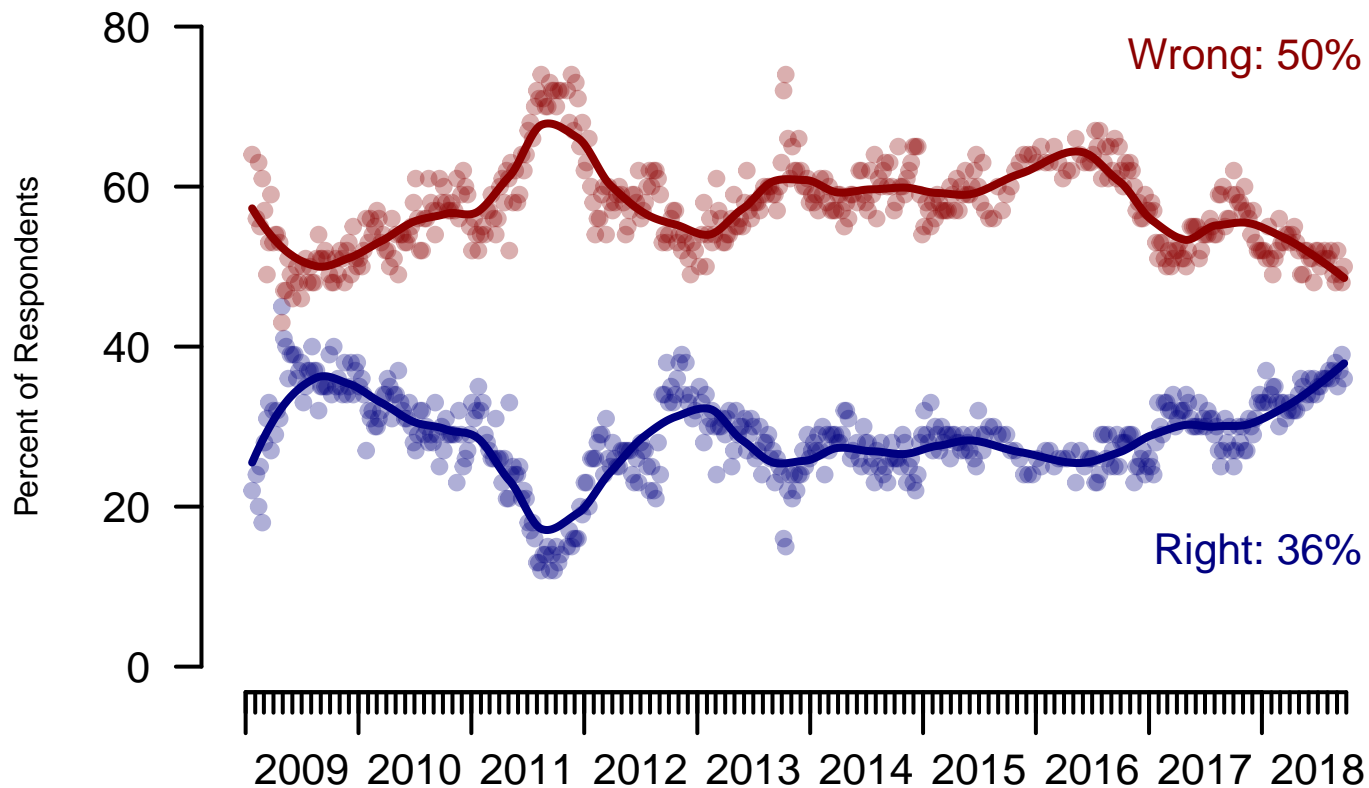


Figure 5: Direction of Country – All Adults

## Direction of Country

"Would you say things in this country today are generally headed in the right direction or off on the wrong track?"

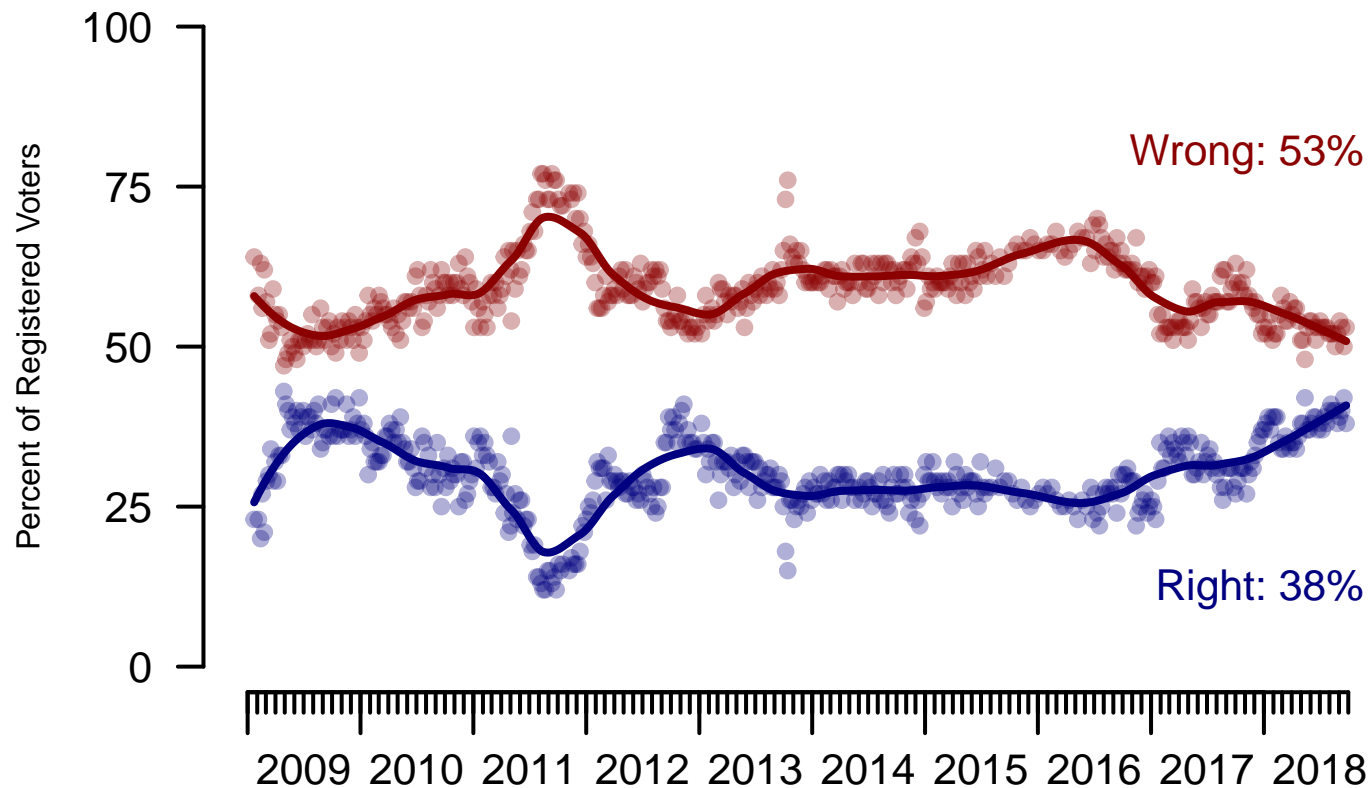


Figure 6: Direction of Country – Registered Voters

**6. Direction of Country – This Week – All Adults**

Would you say things in this country today are...

	Age (4 category)					Race			Census Region			
	Total	Under 30	30-44	45-64	65+	White	Black	Hispanic	North-east	Mid-west	South	West
Generally headed in the right direction	36%	30%	34%	36%	45%	40%	16%	31%	33%	40%	37%	33%
Off on the wrong track	50%	46%	51%	53%	50%	49%	66%	45%	53%	49%	49%	52%
Not sure	14%	24%	16%	11%	5%	11%	18%	24%	14%	11%	14%	15%
Totals (Unweighted N)	100% (1,500)	100% (248)	100% (423)	100% (521)	100% (308)	100% (1,157)	100% (176)	100% (167)	100% (266)	100% (346)	100% (577)	100% (311)

	Party ID			Ideology			Gender		Family Income (3 category)				
	Total	Dem	Ind	Rep	Lib	Mod	Con	Male	Female	Under 50	50-100	100+	Prefer not to say
Generally headed in the right direction	36%	14%	33%	71%	8%	28%	68%	42%	30%	31%	40%	44%	37%
Off on the wrong track	50%	76%	47%	21%	85%	49%	26%	45%	56%	53%	48%	49%	49%
Not sure	14%	10%	20%	7%	7%	23%	6%	14%	14%	16%	12%	8%	14%
Totals (Unweighted N)	100% (1,500)	100% (519)	100% (585)	100% (396)	100% (408)	100% (582)	100% (510)	100% (679)	100% (821)	100% (667)	100% (406)	100% (242)	100% (185)

**The Economist/YouGov Poll**  
September 23 - 25, 2018



<b>Sponsorship</b>	<i>The Economist</i>
<b>Fieldwork</b>	YouGov
<b>Interviewing Dates</b>	September 23 - 25, 2018
<b>Target population</b>	U.S. citizens, aged 18 and over.
<b>Sampling method</b>	Respondents were selected from YouGov's opt-in Internet panel using sample matching. A random sample (stratified by age, gender, race, education, and region) was selected from the 2014 American Community Study. Voter registration was imputed from the November 2014 Current Population Survey Registration and Voting Supplement.
<b>Weighting</b>	The sample was weighted based on age, gender, race, education, and 2016 Presidential vote. The weights range from 0.27 to 4.09, with a mean of one and a standard deviation of 0.6.
<b>Number of respondents</b>	1500
<b>Margin of error</b>	± 2.9% (adjusted for weighting)
<b>Margin of error (Registered Voters)</b>	± 3.2% (adjusted for weighting)
<b>Survey mode</b>	Web-based interviews
<b>Full results</b>	Available online at <a href="http://today.yougov.com/news/categories/economist/">http://today.yougov.com/news/categories/economist/</a> .