

Interviewing: April 1 - 3, 2018  
Sample: 1500 Adults nationwide online  
1004 registered voters nationwide online



# *The Economist/YouGov* Poll

## Weekly Tracking

For immediate release

**1. Presidential Job Approval – Historical**

Do you approve or disapprove of the way [President's name] is handling his job as President?

	All Adults						
	Total Approve	Total Disapprove	Strongly Approve	Somewhat Approve	Somewhat Disapprove	Strongly Disapprove	Not Sure
March 30-April 3, 2018	38%	52%	20%	18%	12%	40%	10%
March 23-27, 2018	39%	49%	19%	20%	9%	40%	12%
March 16-20, 2018	37%	52%	17%	20%	11%	41%	10%
March 10-12, 2018	39%	52%	21%	18%	13%	39%	9%
March 3-5, 2018	40%	50%	20%	20%	13%	37%	10%
February 24-26, 2018	40%	51%	21%	19%	9%	42%	9%
February 17-19, 2018	41%	48%	22%	19%	9%	39%	11%
February 10-12, 2018	41%	51%	21%	20%	11%	40%	8%
February 3-5, 2018	40%	52%	23%	17%	11%	41%	9%
January 27-29, 2018	39%	51%	21%	18%	11%	40%	10%
One Year Ago	40%	48%	21%	19%	11%	37%	11%

	Registered Voters						
	Total Approve	Total Disapprove	Strongly Approve	Somewhat Approve	Somewhat Disapprove	Strongly Disapprove	Not Sure
March 30-April 3, 2018	41%	55%	24%	17%	10%	45%	4%
March 23-27, 2018	41%	54%	23%	18%	10%	44%	5%
March 16-20, 2018	41%	54%	21%	20%	8%	46%	4%
March 10-12, 2018	42%	54%	25%	17%	10%	44%	4%
March 3-5, 2018	41%	54%	23%	18%	10%	44%	4%
February 24-26, 2018	44%	53%	27%	17%	7%	46%	4%
February 17-19, 2018	44%	51%	26%	18%	8%	43%	4%
February 10-12, 2018	45%	50%	25%	20%	8%	42%	4%
February 3-5, 2018	45%	53%	29%	16%	8%	45%	3%
January 27-29, 2018	44%	53%	28%	16%	8%	45%	4%
One Year Ago	43%	50%	23%	20%	11%	39%	8%

## Presidential Job Approval

"Do you approve or disapprove of the way Donald Trump is handling his job as President?"

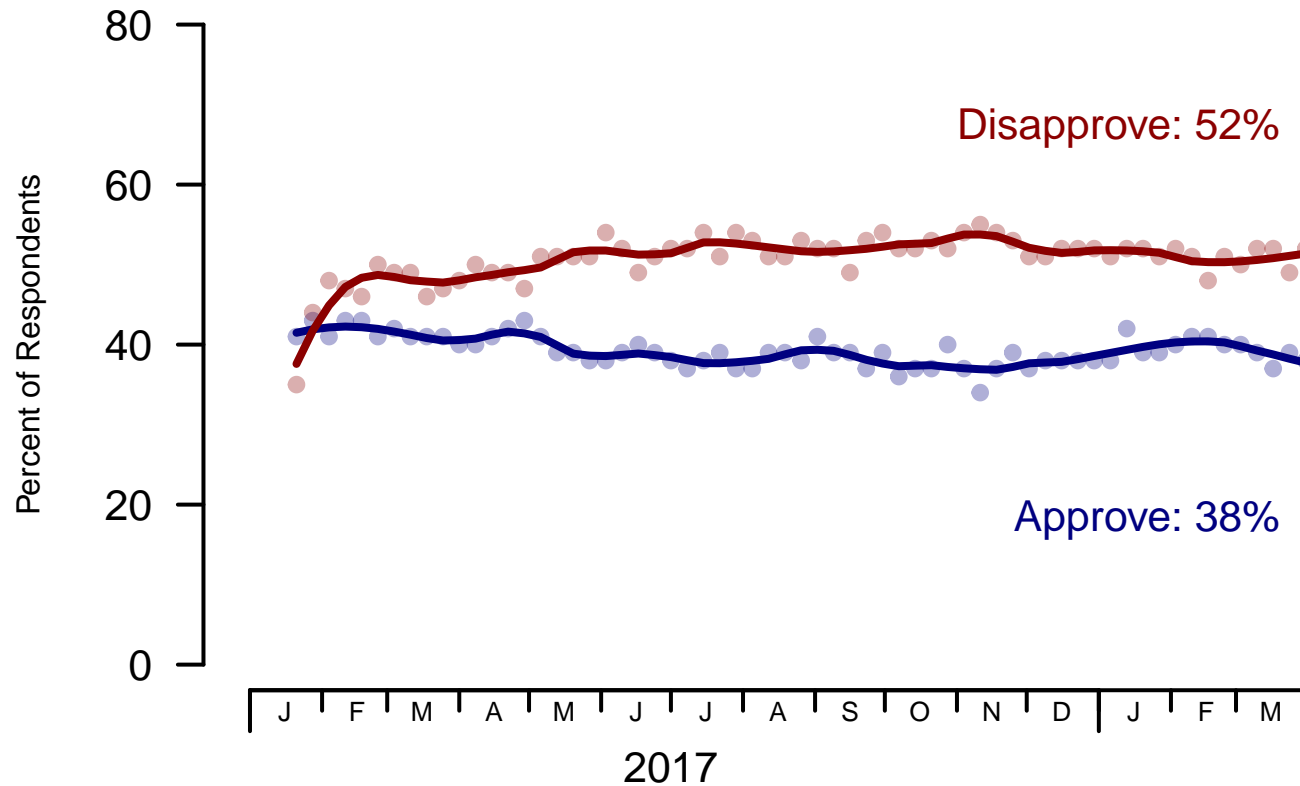


Figure 1: Trump Approval – All Adults

## Presidential Job Approval

"Do you approve or disapprove of the way Donald Trump is handling his job as President?"

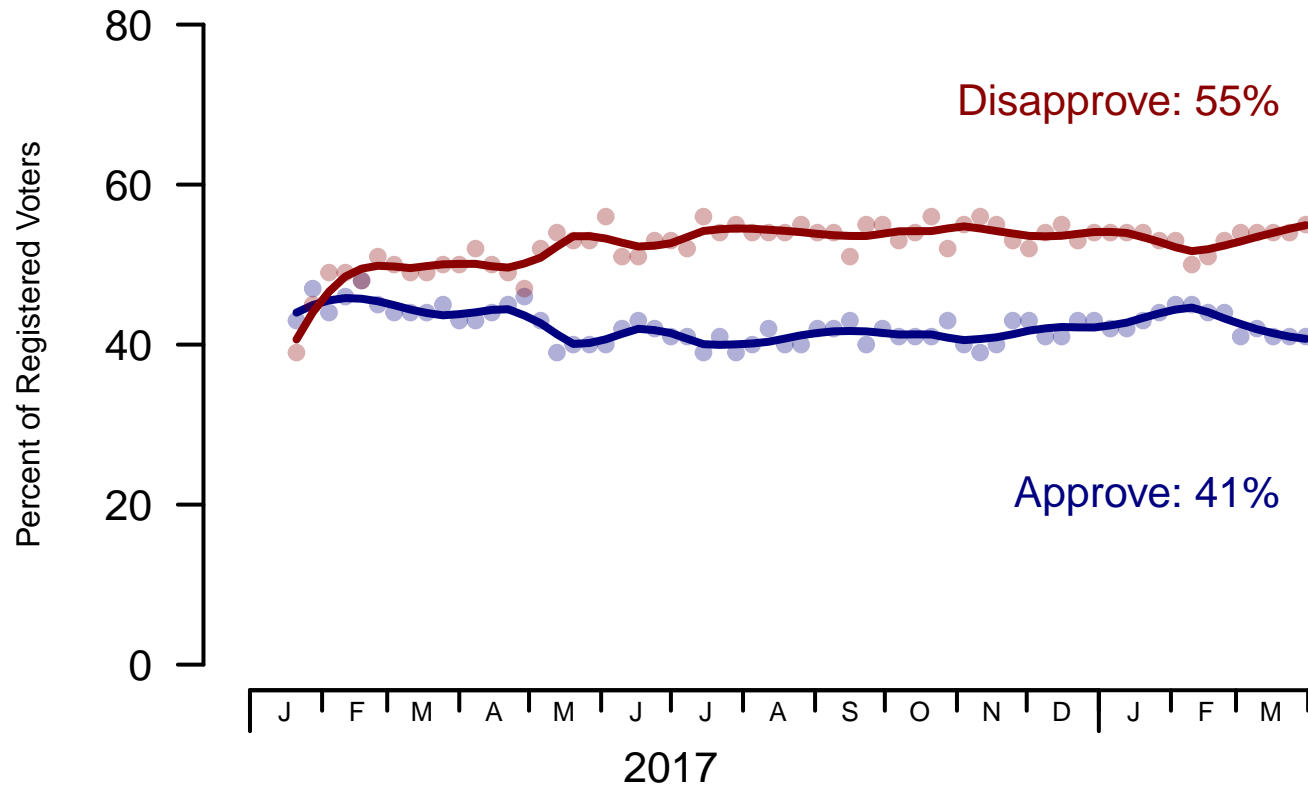


Figure 2: Trump Approval – Registered Voters

**2. President Trump Job Approval – This Week – All Adults**

Do you approve or disapprove of the way Donald Trump is handling his job as President?

	Age (4 category)					Race			Census Region			
	Total	Under 30	30-44	45-64	65+	White	Black	Hispanic	North-east	Mid-west	South	West
Strongly approve	20%	10%	15%	21%	34%	25%	3%	8%	21%	21%	19%	20%
Somewhat approve	18%	19%	19%	19%	16%	21%	5%	17%	18%	20%	18%	17%
Somewhat disapprove	12%	13%	16%	10%	7%	11%	14%	12%	9%	12%	13%	10%
Strongly disapprove	40%	35%	40%	43%	40%	34%	67%	46%	40%	39%	40%	41%
Not sure	10%	23%	11%	7%	2%	9%	10%	18%	13%	8%	10%	12%
Totals (Unweighted N)	100% (1,500)	100% (198)	100% (401)	100% (591)	100% (310)	100% (1,179)	100% (171)	100% (150)	100% (252)	100% (341)	100% (545)	100% (362)

	Party ID			Ideology			Gender		Family Income (3 category)			Prefer not to say	
	Total	Dem	Ind	Rep	Lib	Mod	Con	Male	Female	Under 50	50-100		100+
Strongly approve	20%	3%	14%	52%	5%	8%	48%	23%	17%	17%	22%	22%	24%
Somewhat approve	18%	7%	20%	30%	8%	16%	31%	20%	17%	18%	19%	22%	17%
Somewhat disapprove	12%	12%	12%	10%	8%	16%	9%	12%	12%	12%	12%	10%	11%
Strongly disapprove	40%	73%	36%	6%	77%	40%	9%	38%	41%	42%	39%	39%	35%
Not sure	10%	4%	18%	3%	3%	20%	4%	7%	13%	12%	7%	7%	13%
Totals (Unweighted N)	100% (1,500)	100% (505)	100% (611)	100% (384)	100% (428)	100% (583)	100% (489)	100% (656)	100% (844)	100% (705)	100% (387)	100% (217)	100% (191)

**3. Approval of U.S. Congress – Historical**

Overall, do you approve or disapprove of the way that the United States Congress is handling its job?

All Adults								
	<b>Total Approve</b>	<b>Total Disapprove</b>	Strongly Approve	Somewhat Approve	Neutral	Somewhat Disapprove	Strongly Disapprove	Not Sure
March 30-April 3, 2018	12%	59%	2%	10%	13%	21%	38%	16%
March 23-27, 2018	10%	62%	3%	7%	12%	21%	41%	16%
March 16-20, 2018	11%	57%	3%	8%	15%	21%	36%	17%
March 10-12, 2018	11%	59%	3%	8%	15%	22%	37%	15%
March 3-5, 2018	11%	57%	2%	9%	17%	22%	35%	15%
February 24-26, 2018	12%	62%	3%	9%	13%	22%	40%	13%
February 17-19, 2018	11%	59%	3%	8%	15%	20%	39%	15%
February 10-12, 2018	12%	58%	3%	9%	16%	21%	37%	14%
February 3-5, 2018	12%	61%	3%	9%	12%	22%	39%	15%
January 27-29, 2018	11%	63%	3%	8%	12%	25%	38%	15%
One Year Ago	13%	52%	3%	10%	19%	24%	28%	17%

Registered Voters								
	<b>Total Approve</b>	<b>Total Disapprove</b>	Strongly Approve	Somewhat Approve	Neutral	Somewhat Disapprove	Strongly Disapprove	Not Sure
March 30-April 3, 2018	11%	70%	2%	9%	11%	24%	46%	9%
March 23-27, 2018	8%	74%	2%	6%	11%	23%	51%	7%
March 16-20, 2018	11%	69%	3%	8%	14%	25%	44%	8%
March 10-12, 2018	10%	68%	2%	8%	13%	23%	45%	8%
March 3-5, 2018	11%	67%	2%	9%	15%	23%	44%	7%
February 24-26, 2018	13%	70%	3%	10%	11%	24%	46%	6%
February 17-19, 2018	10%	70%	2%	8%	13%	22%	48%	7%
February 10-12, 2018	12%	68%	2%	10%	13%	24%	44%	7%
February 3-5, 2018	11%	70%	2%	9%	12%	24%	46%	7%
January 27-29, 2018	9%	74%	2%	7%	11%	27%	47%	7%
One Year Ago	12%	58%	3%	9%	17%	26%	32%	13%

### Congress Approval

"Do you approve of the way the U.S. Congress is handling its job?"

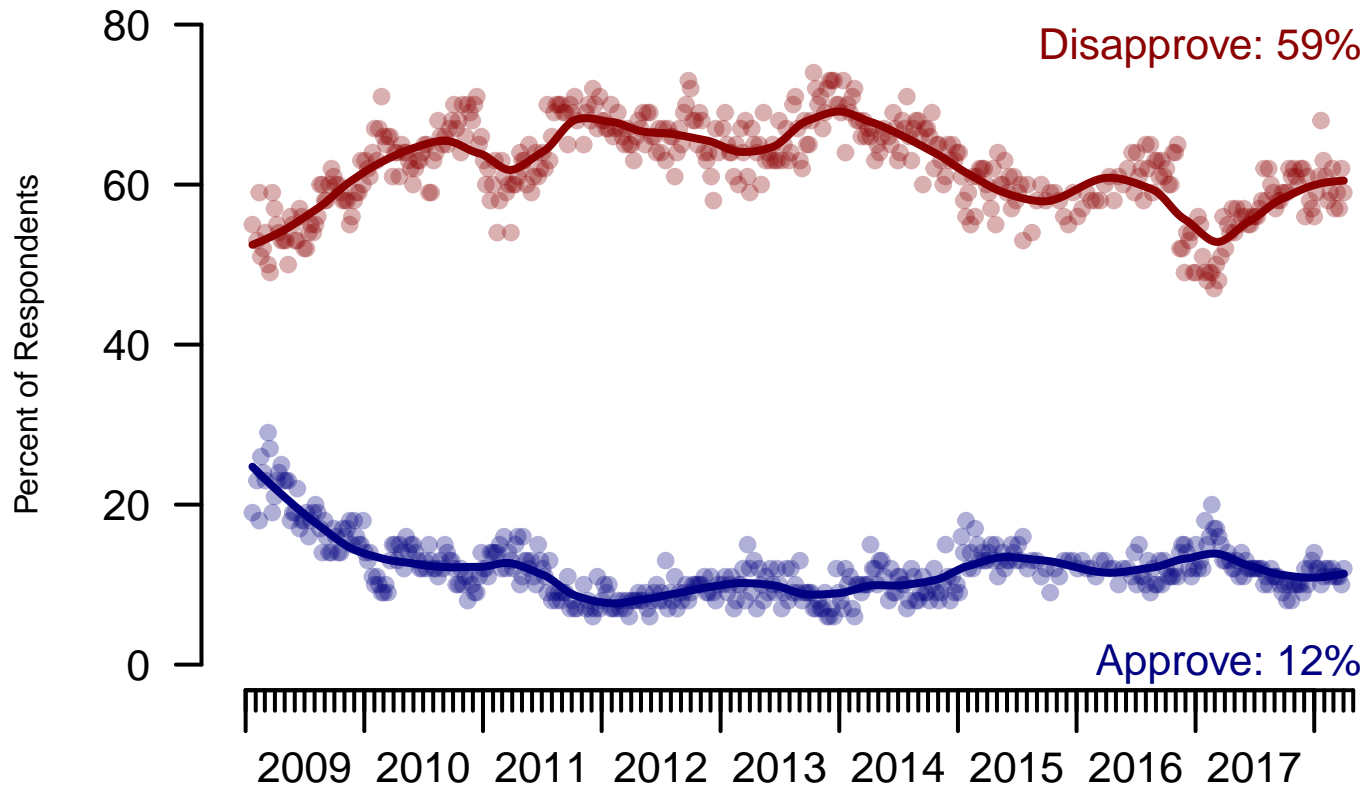


Figure 3: Congress Approval – All Adults

## Congress Approval

"Do you approve of the way the  
U.S. Congress is handling its job?"

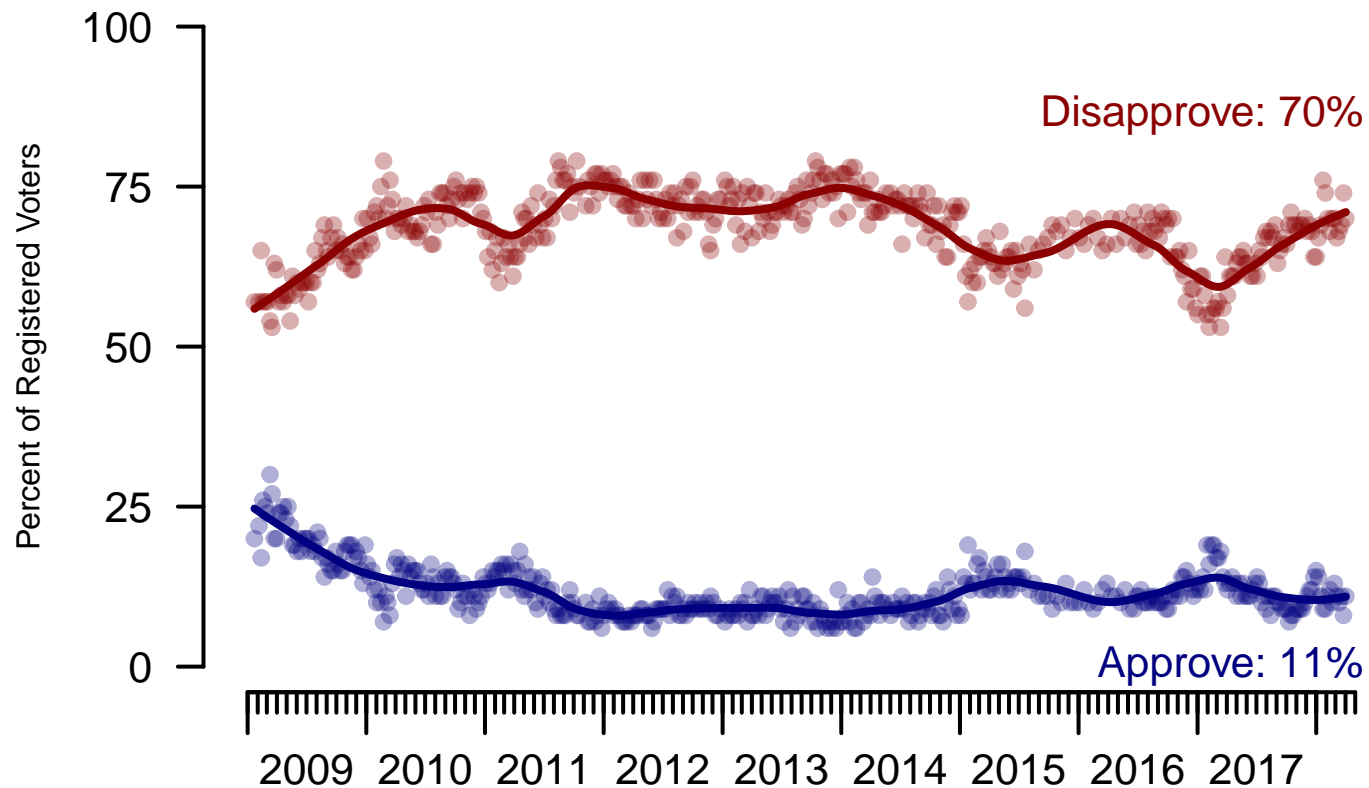


Figure 4: Congress Approval – Registered Voters

**4. Approval of U.S. Congress – This Week – All Adults**

Overall, do you approve or disapprove of the way that the United States Congress is handling its job?

	Age (4 category)					Race			Census Region			
	Total	Under 30	30-44	45-64	65+	White	Black	Hispanic	North-east	Mid-west	South	West
Strongly approve	2%	2%	4%	2%	1%	3%	0%	1%	3%	3%	1%	3%
Somewhat approve	10%	15%	9%	9%	7%	11%	6%	8%	10%	12%	10%	7%
Neither approve nor disapprove	13%	15%	15%	13%	11%	12%	16%	20%	17%	12%	13%	13%
Somewhat disapprove	21%	17%	20%	19%	27%	21%	18%	18%	16%	24%	21%	21%
Strongly disapprove	38%	25%	32%	45%	49%	38%	44%	32%	35%	38%	39%	40%
Not sure	16%	26%	21%	12%	5%	15%	16%	21%	20%	11%	16%	16%
Totals (Unweighted N)	100% (1,496)	100% (196)	100% (400)	100% (590)	100% (310)	100% (1,177)	100% (171)	100% (148)	100% (251)	100% (339)	100% (545)	100% (361)

	Party ID			Ideology			Gender		Family Income (3 category)				
	Total	Dem	Ind	Rep	Lib	Mod	Con	Male	Female	Under 50	50-100	100+	Prefer not to say
Strongly approve	2%	2%	2%	4%	2%	2%	3%	3%	2%	2%	3%	1%	1%
Somewhat approve	10%	5%	7%	20%	5%	8%	16%	12%	8%	9%	12%	11%	6%
Neither approve nor disapprove	13%	14%	12%	15%	9%	16%	13%	11%	16%	15%	12%	6%	15%
Somewhat disapprove	21%	20%	18%	25%	18%	17%	28%	22%	20%	20%	20%	26%	18%
Strongly disapprove	38%	47%	40%	25%	60%	32%	29%	41%	36%	34%	42%	46%	42%
Not sure	16%	12%	21%	11%	6%	25%	11%	12%	19%	18%	12%	10%	18%
Totals (Unweighted N)	100% (1,496)	100% (505)	100% (607)	100% (384)	100% (428)	100% (579)	100% (489)	100% (655)	100% (841)	100% (702)	100% (387)	100% (217)	100% (190)

**5. Direction of country – Historical**

Would you say things in this country today are...

	All Adults		
	Right Direction	Wrong Track	Not Sure
March 30-April 3, 2018	33%	53%	15%
March 23-27, 2018	32%	54%	14%
March 16-20, 2018	31%	54%	15%
March 10-12, 2018	33%	53%	14%
March 3-5, 2018	33%	53%	13%
February 24-26, 2018	30%	56%	14%
February 17-19, 2018	33%	52%	15%
February 10-12, 2018	35%	51%	13%
February 3-5, 2018	35%	49%	16%
January 27-29, 2018	34%	51%	15%
One Year Ago	31%	52%	18%

	Registered Voters		
	Right Direction	Wrong Track	Not Sure
March 30-April 3, 2018	35%	55%	11%
March 23-27, 2018	34%	57%	9%
March 16-20, 2018	35%	54%	11%
March 10-12, 2018	36%	54%	10%
March 3-5, 2018	34%	56%	10%
February 24-26, 2018	34%	58%	9%
February 17-19, 2018	35%	55%	10%
February 10-12, 2018	39%	52%	9%
February 3-5, 2018	39%	52%	9%
January 27-29, 2018	39%	51%	10%
One Year Ago	32%	54%	14%

## Direction of Country

"Would you say things in this country today are generally headed in the right direction or off on the wrong track?"

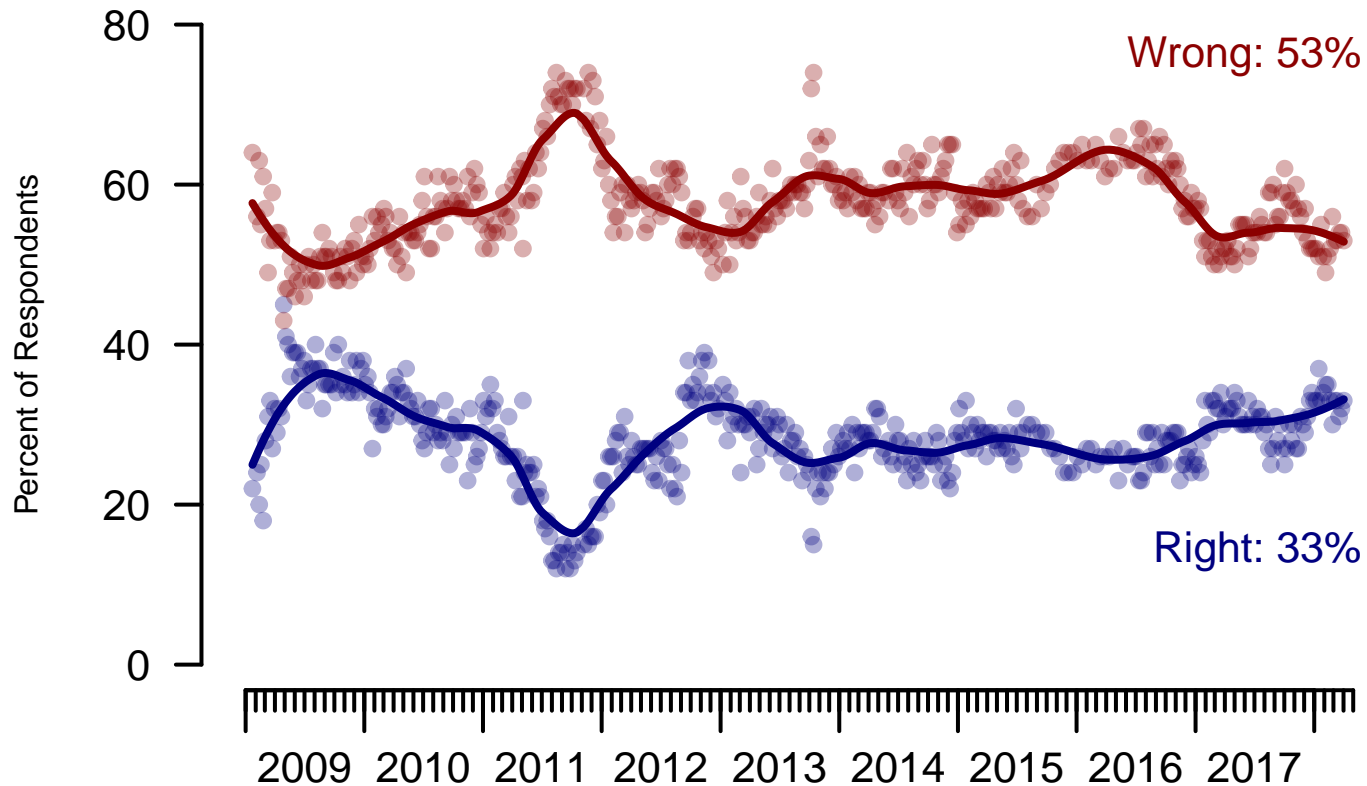


Figure 5: Direction of Country – All Adults

## Direction of Country

"Would you say things in this country today are generally headed in the right direction or off on the wrong track?"

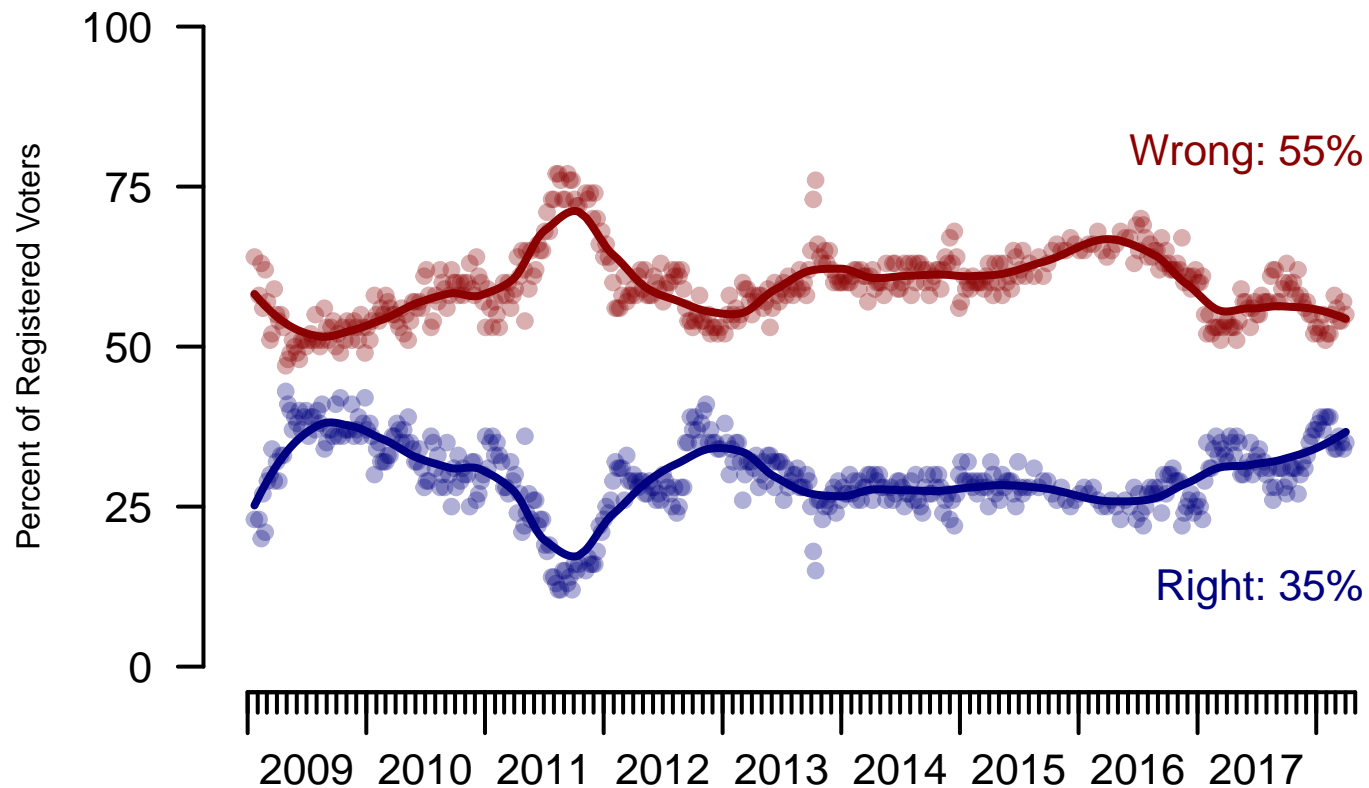


Figure 6: Direction of Country – Registered Voters

**6. Direction of Country – This Week – All Adults**

Would you say things in this country today are...

	Age (4 category)					Race			Census Region			
	Total	Under 30	30-44	45-64	65+	White	Black	Hispanic	North-east	Mid-west	South	West
Generally headed in the right direction	33%	24%	31%	32%	45%	38%	10%	25%	31%	33%	33%	33%
Off on the wrong track	53%	49%	57%	56%	46%	48%	77%	54%	56%	53%	53%	49%
Not sure	15%	27%	13%	12%	8%	14%	12%	21%	13%	14%	14%	18%
Totals (Unweighted N)	100% (1,500)	100% (198)	100% (401)	100% (591)	100% (310)	100% (1,179)	100% (171)	100% (150)	100% (252)	100% (341)	100% (545)	100% (362)

	Party ID			Ideology			Gender		Family Income (3 category)				
	Total	Dem	Ind	Rep	Lib	Mod	Con	Male	Female	Under 50	50-100	100+	Prefer not to say
Generally headed in the right direction	33%	11%	29%	67%	14%	22%	62%	36%	29%	29%	36%	39%	36%
Off on the wrong track	53%	78%	51%	23%	80%	55%	28%	49%	56%	56%	53%	48%	44%
Not sure	15%	11%	20%	9%	6%	23%	10%	15%	15%	16%	11%	12%	20%
Totals (Unweighted N)	100% (1,500)	100% (505)	100% (611)	100% (384)	100% (428)	100% (583)	100% (489)	100% (656)	100% (844)	100% (705)	100% (387)	100% (217)	100% (191)

**The Economist/YouGov Poll**  
April 1 - 3, 2018



<b>Sponsorship</b>	<i>The Economist</i>
<b>Fieldwork</b>	YouGov
<b>Interviewing Dates</b>	April 1 - 3, 2018
<b>Target population</b>	U.S. citizens, aged 18 and over.
<b>Sampling method</b>	Respondents were selected from YouGov's opt-in Internet panel using sample matching. A random sample (stratified by age, gender, race, education, and region) was selected from the 2014 American Community Study. Voter registration was imputed from the November 2014 Current Population Survey Registration and Voting Supplement.
<b>Weighting</b>	The sample was weighted based on age, gender, race, education, and 2016 Presidential vote. The weights range from 0.2 to 6.5, with a mean of one and a standard deviation of 0.7.
<b>Number of respondents</b>	1500
<b>Margin of error</b>	± 3% (adjusted for weighting)
<b>Margin of error (Registered Voters)</b>	± 3.3% (adjusted for weighting)
<b>Survey mode</b>	Web-based interviews
<b>Full results</b>	Available online at <a href="http://today.yougov.com/news/categories/economist/">http://today.yougov.com/news/categories/economist/</a> .