

Interviewing: June 24 - 27, 2016
Sample: 1300 Adults nationwide online
919 registered voters nationwide online



The Economist/YouGov Poll

Weekly Tracking

For immediate release

1. Approval of Obama as President – Historical

Do you approve or disapprove of the way Barack Obama is handling his job as President?

| | All Adults | | | | | | |
|----------------------|---------------|------------------|------------------|------------------|---------------------|---------------------|----------|
| | Total Approve | Total Disapprove | Strongly Approve | Somewhat Approve | Somewhat Disapprove | Strongly Disapprove | Not Sure |
| June 24-28, 2016 | 47% | 49% | 21% | 26% | 15% | 34% | 4% |
| June 17-21, 2016 | 47% | 48% | 22% | 25% | 12% | 36% | 5% |
| June 3-7, 2016 | 46% | 48% | 22% | 24% | 16% | 32% | 6% |
| May 21-23, 2016 | 47% | 48% | 20% | 27% | 14% | 34% | 6% |
| May 7-9, 2016 | 47% | 49% | 21% | 26% | 14% | 35% | 5% |
| April 23-25, 2016 | 47% | 47% | 21% | 26% | 13% | 34% | 6% |
| April 9-11, 2016 | 47% | 51% | 22% | 25% | 13% | 38% | 3% |
| March 26-28, 2016 | 48% | 48% | 23% | 25% | 12% | 36% | 4% |
| March 12-14, 2016 | 47% | 49% | 22% | 25% | 14% | 35% | 3% |
| February 27-29, 2016 | 46% | 50% | 21% | 25% | 13% | 37% | 4% |
| One Year Ago | 48% | 49% | 19% | 29% | 11% | 38% | 3% |

| | Registered Voters | | | | | | |
|----------------------|-------------------|------------------|------------------|------------------|---------------------|---------------------|----------|
| | Total Approve | Total Disapprove | Strongly Approve | Somewhat Approve | Somewhat Disapprove | Strongly Disapprove | Not Sure |
| June 24-28, 2016 | 43% | 54% | 20% | 23% | 14% | 40% | 2% |
| June 17-21, 2016 | 47% | 49% | 22% | 25% | 10% | 39% | 3% |
| June 3-7, 2016 | 46% | 52% | 22% | 24% | 13% | 39% | 3% |
| May 21-23, 2016 | 45% | 52% | 22% | 23% | 13% | 39% | 3% |
| May 7-9, 2016 | 46% | 52% | 22% | 24% | 12% | 40% | 2% |
| April 23-25, 2016 | 45% | 51% | 22% | 23% | 11% | 40% | 4% |
| April 9-11, 2016 | 45% | 53% | 23% | 22% | 10% | 43% | 2% |
| March 26-28, 2016 | 46% | 51% | 24% | 22% | 11% | 40% | 3% |
| March 12-14, 2016 | 44% | 54% | 23% | 21% | 13% | 41% | 2% |
| February 27-29, 2016 | 44% | 54% | 22% | 22% | 10% | 44% | 2% |
| One Year Ago | 45% | 53% | 20% | 25% | 10% | 43% | 2% |

Obama Approval

"Do you approve or disapprove of the way Barack Obama is handling his job as President?"

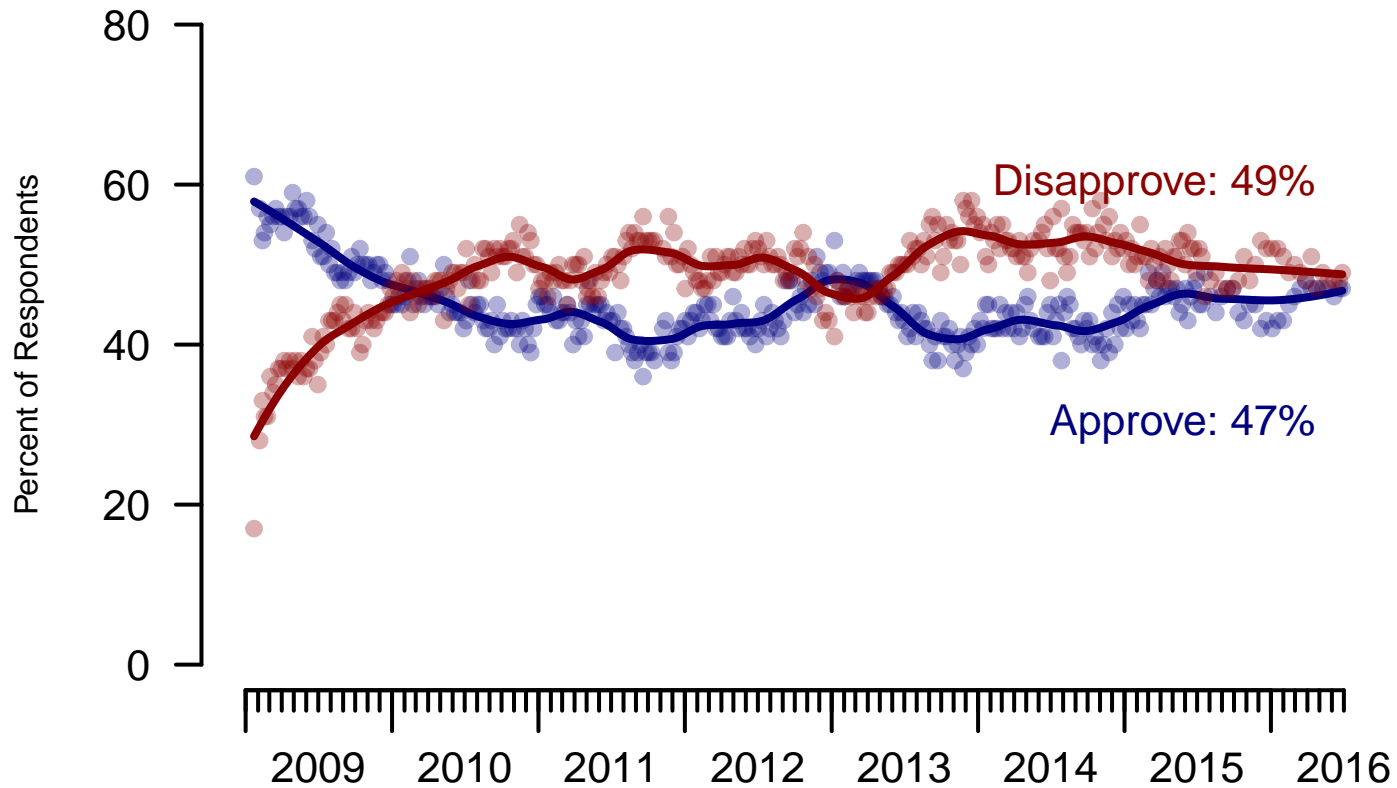


Figure 1: Obama Approval – All Adults

Obama Approval

"Do you approve or disapprove of the way Barack Obama is handling his job as President?"

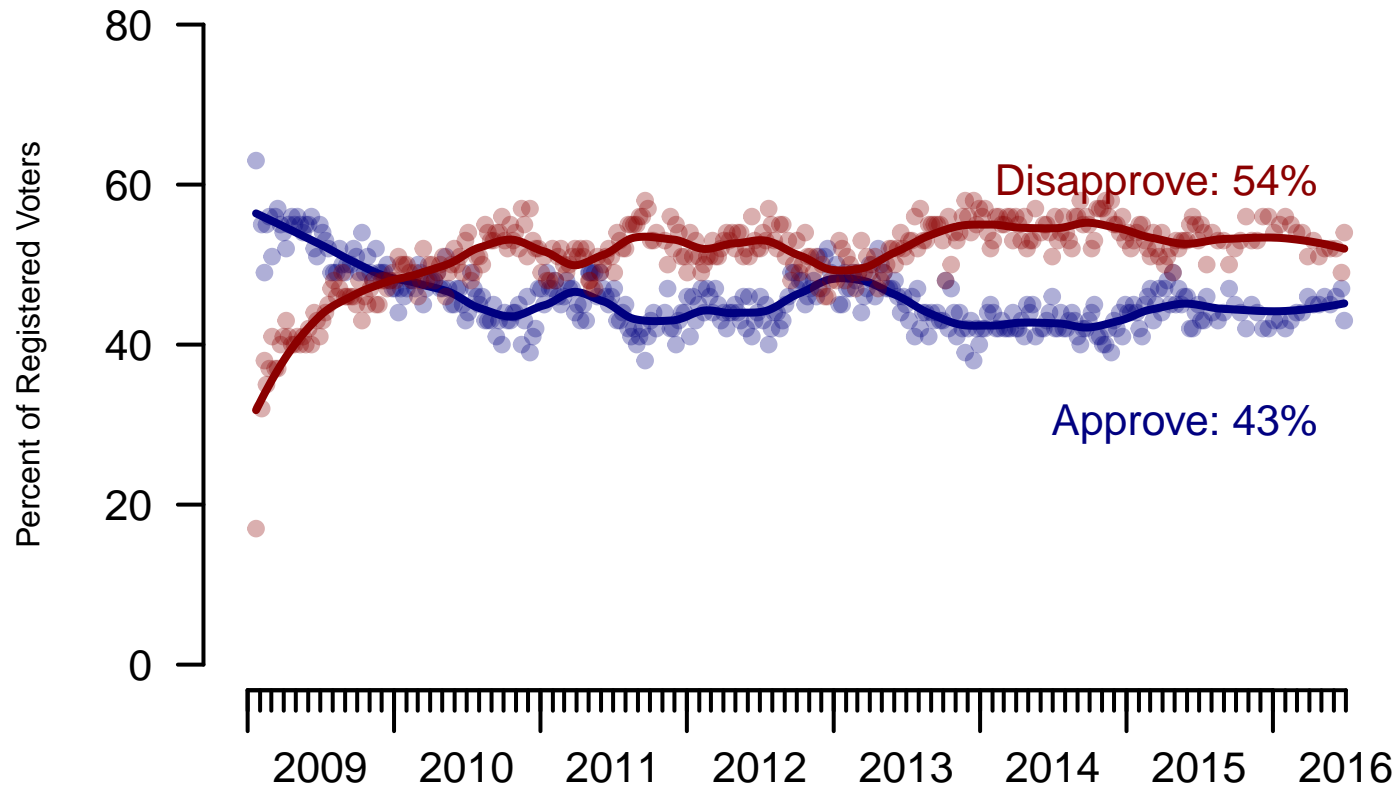


Figure 2: Obama Approval – Registered Voters

2. Approval of Obama as President – This Week – All Adults

Do you approve or disapprove of the way Barack Obama is handling his job as President?

| | Age (4 category) | | | | | Race | | | Census Region | | | |
|-----------------------|------------------|------------|------------|------------|------------|--------------|------------|------------|---------------|------------|------------|------------|
| | Total | Under 30 | 30-44 | 45-64 | 65+ | White | Black | Hispanic | North-east | Mid-west | South | West |
| Strongly Approve | 21% | 21% | 21% | 24% | 18% | 17% | 46% | 27% | 28% | 21% | 18% | 22% |
| Somewhat Approve | 26% | 30% | 28% | 22% | 26% | 25% | 30% | 29% | 28% | 22% | 24% | 30% |
| Somewhat Disapprove | 15% | 23% | 17% | 14% | 9% | 15% | 9% | 22% | 12% | 17% | 16% | 15% |
| Strongly Disapprove | 34% | 19% | 26% | 39% | 47% | 41% | 7% | 16% | 30% | 37% | 37% | 29% |
| Not Sure | 4% | 6% | 9% | 1% | 1% | 2% | 8% | 7% | 2% | 3% | 4% | 4% |
| Totals (Unweighted N) | 100% (1,300) | 100% (230) | 100% (323) | 100% (518) | 100% (229) | 100% (1,012) | 100% (149) | 100% (139) | 100% (256) | 100% (299) | 100% (482) | 100% (263) |

| | Party ID | | | Ideology | | | Gender | | Family Income (3 category) | | | Prefer not to say | |
|-----------------------|--------------|------------|------------|------------|------------|------------|------------|------------|----------------------------|------------|------------|-------------------|------------|
| | Total | Dem | Ind | Rep | Lib | Mod | Con | Male | Female | Under 50 | 50-100 | | 100+ |
| Strongly Approve | 21% | 44% | 14% | 2% | 44% | 20% | 6% | 22% | 20% | 20% | 25% | 20% | 23% |
| Somewhat Approve | 26% | 37% | 25% | 13% | 37% | 30% | 13% | 24% | 28% | 28% | 20% | 26% | 25% |
| Somewhat Disapprove | 15% | 9% | 21% | 13% | 7% | 22% | 14% | 16% | 14% | 15% | 16% | 11% | 17% |
| Strongly Disapprove | 34% | 7% | 34% | 70% | 8% | 22% | 67% | 34% | 34% | 33% | 36% | 41% | 26% |
| Not Sure | 4% | 3% | 5% | 2% | 4% | 6% | 1% | 4% | 3% | 3% | 3% | 2% | 8% |
| Totals (Unweighted N) | 100% (1,300) | 100% (471) | 100% (477) | 100% (352) | 100% (343) | 100% (563) | 100% (394) | 100% (630) | 100% (670) | 100% (684) | 100% (304) | 100% (161) | 100% (151) |

3. Approval of U.S. Congress – Historical

Overall, do you approve or disapprove of the way that the United States Congress is handling its job?

| | All Adults | | | | | | | |
|----------------------|---------------|------------------|------------------|------------------|---------|---------------------|---------------------|----------|
| | Total Approve | Total Disapprove | Strongly Approve | Somewhat Approve | Neutral | Somewhat Disapprove | Strongly Disapprove | Not Sure |
| June 24-28, 2016 | 14% | 59% | 4% | 10% | 19% | 21% | 38% | 8% |
| June 17-21, 2016 | 11% | 64% | 3% | 8% | 16% | 23% | 41% | 9% |
| June 3-7, 2016 | 12% | 62% | 4% | 8% | 18% | 24% | 38% | 8% |
| May 21-23, 2016 | 12% | 60% | 3% | 9% | 17% | 21% | 39% | 11% |
| May 7-9, 2016 | 10% | 61% | 2% | 8% | 18% | 20% | 41% | 10% |
| April 23-25, 2016 | 12% | 58% | 3% | 9% | 18% | 20% | 38% | 12% |
| April 9-11, 2016 | 12% | 61% | 3% | 9% | 17% | 21% | 40% | 10% |
| March 26-28, 2016 | 13% | 60% | 2% | 11% | 18% | 22% | 38% | 10% |
| March 12-14, 2016 | 13% | 58% | 4% | 9% | 20% | 22% | 36% | 10% |
| February 27-29, 2016 | 11% | 58% | 3% | 8% | 20% | 23% | 35% | 11% |
| One Year Ago | 13% | 58% | 2% | 11% | 20% | 25% | 33% | 9% |

| | Registered Voters | | | | | | | |
|----------------------|-------------------|------------------|------------------|------------------|---------|---------------------|---------------------|----------|
| | Total Approve | Total Disapprove | Strongly Approve | Somewhat Approve | Neutral | Somewhat Disapprove | Strongly Disapprove | Not Sure |
| June 24-28, 2016 | 11% | 66% | 2% | 9% | 17% | 25% | 41% | 6% |
| June 17-21, 2016 | 9% | 71% | 2% | 7% | 15% | 26% | 45% | 5% |
| June 3-7, 2016 | 9% | 69% | 2% | 7% | 16% | 25% | 44% | 6% |
| May 21-23, 2016 | 12% | 67% | 3% | 9% | 15% | 24% | 43% | 6% |
| May 7-9, 2016 | 10% | 70% | 2% | 8% | 15% | 23% | 47% | 6% |
| April 23-25, 2016 | 11% | 66% | 3% | 8% | 14% | 22% | 44% | 8% |
| April 9-11, 2016 | 11% | 70% | 3% | 8% | 13% | 24% | 46% | 5% |
| March 26-28, 2016 | 13% | 66% | 3% | 10% | 15% | 23% | 43% | 6% |
| March 12-14, 2016 | 12% | 65% | 3% | 9% | 16% | 24% | 41% | 6% |
| February 27-29, 2016 | 10% | 67% | 2% | 8% | 17% | 25% | 42% | 6% |
| One Year Ago | 14% | 61% | 2% | 12% | 18% | 26% | 35% | 6% |

Congress Approval

"Do you approve of the way the U.S. Congress is handling its job?"

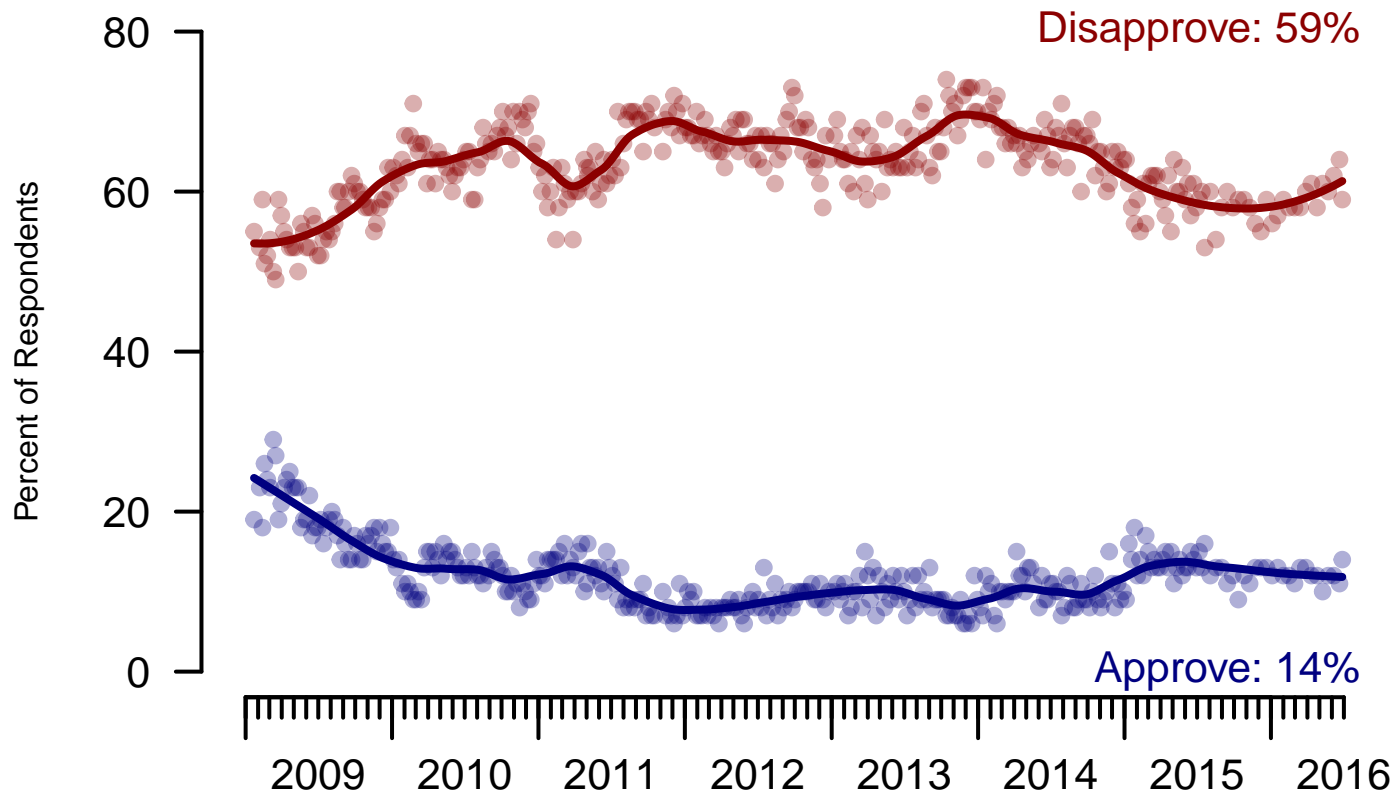


Figure 3: Congress Approval – All Adults

Congress Approval

"Do you approve of the way the
U.S. Congress is handling its job?"

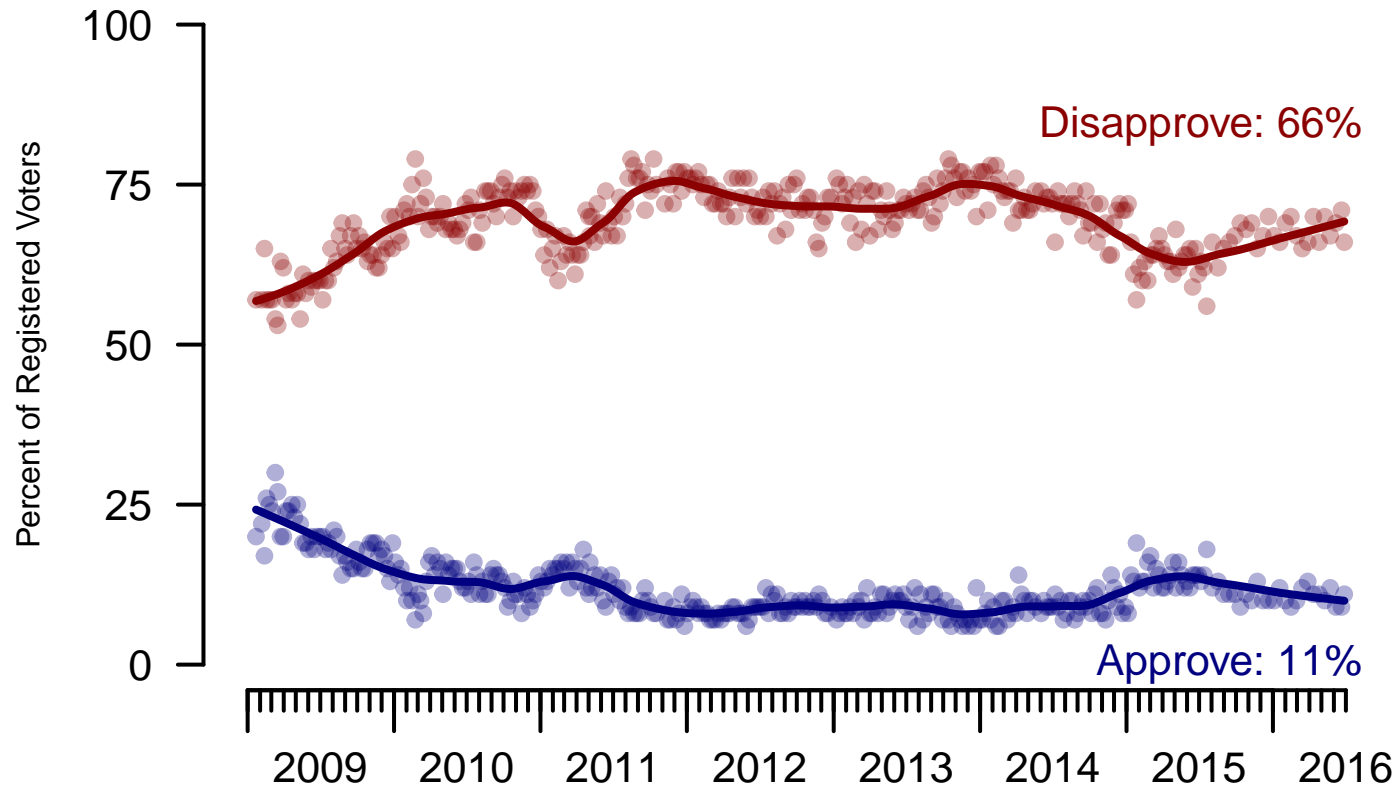


Figure 4: Congress Approval – Registered Voters

4. Approval of U.S. Congress – This Week – All Adults

Overall, do you approve or disapprove of the way that the United States Congress is handling its job?

| | Age (4 category) | | | | | Race | | | Census Region | | | |
|--------------------------------|------------------|------------|------------|------------|------------|--------------|------------|------------|---------------|------------|------------|------------|
| | Total | Under 30 | 30-44 | 45-64 | 65+ | White | Black | Hispanic | North-east | Mid-west | South | West |
| Strongly approve | 4% | 6% | 6% | 1% | 3% | 1% | 16% | 4% | 4% | 2% | 4% | 5% |
| Somewhat approve | 10% | 17% | 14% | 8% | 3% | 9% | 8% | 22% | 12% | 11% | 10% | 8% |
| Neither approve nor disapprove | 19% | 27% | 18% | 15% | 17% | 17% | 24% | 24% | 14% | 19% | 22% | 17% |
| Somewhat disapprove | 21% | 21% | 20% | 20% | 26% | 22% | 20% | 17% | 23% | 24% | 19% | 21% |
| Strongly disapprove | 38% | 16% | 31% | 47% | 48% | 43% | 21% | 24% | 38% | 38% | 35% | 43% |
| Not sure | 8% | 12% | 12% | 8% | 2% | 8% | 12% | 9% | 9% | 6% | 10% | 7% |
| Totals (Unweighted N) | 100% (1,282) | 100% (227) | 100% (315) | 100% (511) | 100% (229) | 100% (1,006) | 100% (142) | 100% (134) | 100% (253) | 100% (297) | 100% (473) | 100% (259) |

| | Party ID | | | Ideology | | | Gender | | Family Income (3 category) | | | | |
|--------------------------------|--------------|------------|------------|------------|------------|------------|------------|------------|----------------------------|------------|------------|------------|-------------------|
| | Total | Dem | Ind | Rep | Lib | Mod | Con | Male | Female | Under 50 | 50-100 | 100+ | Prefer not to say |
| Strongly approve | 4% | 6% | 2% | 2% | 3% | 5% | 2% | 5% | 2% | 3% | 6% | 1% | 1% |
| Somewhat approve | 10% | 10% | 8% | 13% | 10% | 9% | 11% | 12% | 8% | 10% | 11% | 10% | 10% |
| Neither approve nor disapprove | 19% | 19% | 16% | 21% | 10% | 23% | 20% | 19% | 19% | 19% | 18% | 15% | 21% |
| Somewhat disapprove | 21% | 19% | 20% | 25% | 18% | 16% | 30% | 17% | 25% | 22% | 20% | 20% | 20% |
| Strongly disapprove | 38% | 37% | 43% | 30% | 53% | 35% | 30% | 42% | 34% | 35% | 41% | 47% | 38% |
| Not sure | 8% | 8% | 9% | 8% | 6% | 12% | 7% | 5% | 11% | 10% | 5% | 6% | 10% |
| Totals (Unweighted N) | 100% (1,282) | 100% (465) | 100% (469) | 100% (348) | 100% (338) | 100% (554) | 100% (390) | 100% (623) | 100% (659) | 100% (672) | 100% (303) | 100% (159) | 100% (148) |

5. Direction of country – Historical

Would you say things in this country today are...

| | All Adults | | |
|----------------------|-----------------|-------------|----------|
| | Right Direction | Wrong Track | Not Sure |
| June 24-28, 2016 | 26% | 63% | 11% |
| June 17-21, 2016 | 26% | 63% | 11% |
| June 3-7, 2016 | 25% | 63% | 13% |
| May 21-23, 2016 | 27% | 64% | 9% |
| May 7-9, 2016 | 23% | 66% | 11% |
| April 23-25, 2016 | 27% | 62% | 11% |
| April 9-11, 2016 | 26% | 62% | 11% |
| March 26-28, 2016 | 26% | 61% | 13% |
| March 12-14, 2016 | 26% | 63% | 12% |
| February 27-29, 2016 | 25% | 65% | 9% |
| One Year Ago | 32% | 60% | 8% |

| | Registered Voters | | |
|----------------------|-------------------|-------------|----------|
| | Right Direction | Wrong Track | Not Sure |
| June 24-28, 2016 | 23% | 69% | 8% |
| June 17-21, 2016 | 28% | 63% | 9% |
| June 3-7, 2016 | 25% | 67% | 8% |
| May 21-23, 2016 | 26% | 67% | 7% |
| May 7-9, 2016 | 23% | 68% | 8% |
| April 23-25, 2016 | 25% | 66% | 9% |
| April 9-11, 2016 | 26% | 65% | 8% |
| March 26-28, 2016 | 25% | 64% | 10% |
| March 12-14, 2016 | 25% | 65% | 10% |
| February 27-29, 2016 | 26% | 68% | 6% |
| One Year Ago | 32% | 61% | 7% |

Direction of Country

"Would you say things in this country today are generally headed in the right direction or off on the wrong track?"

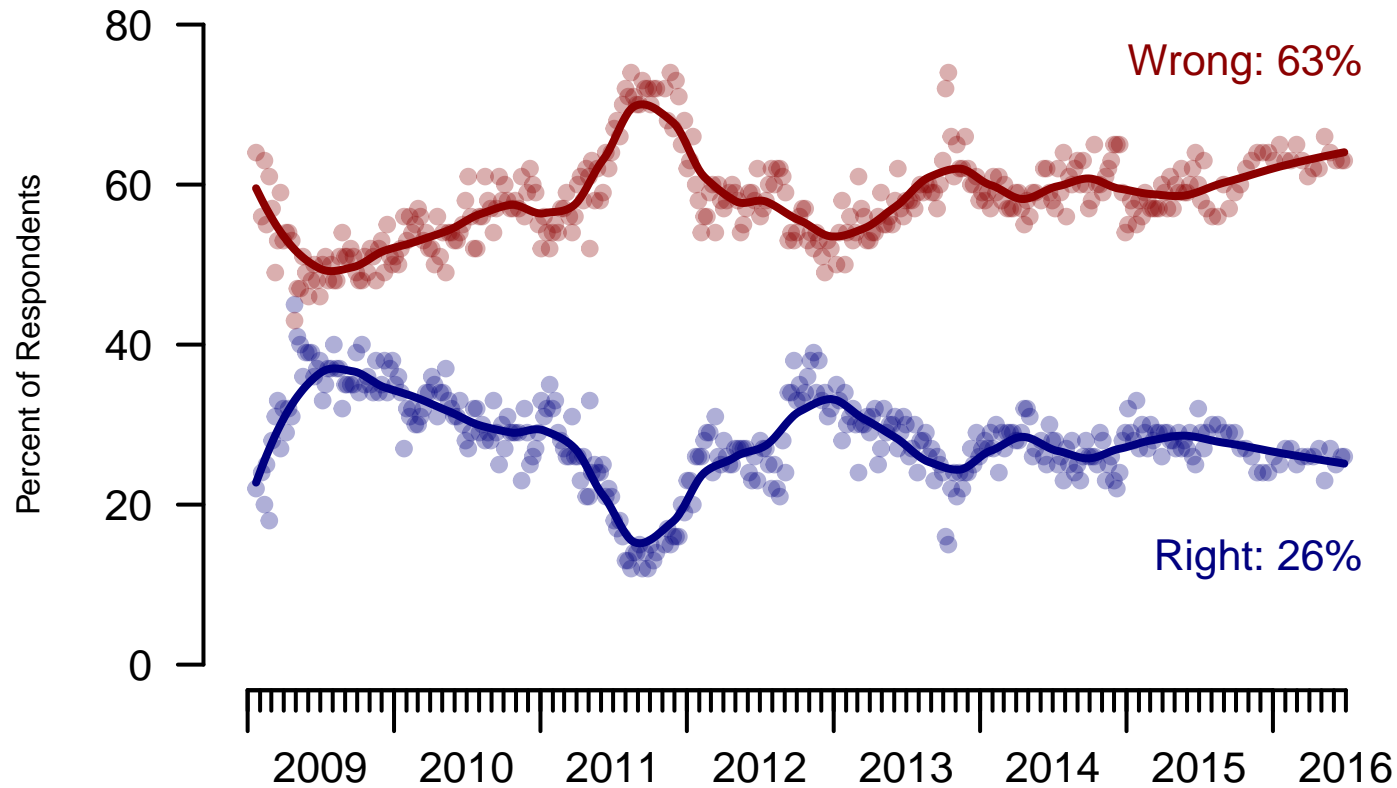


Figure 5: Direction of Country – All Adults

Direction of Country

"Would you say things in this country today are generally headed in the right direction or off on the wrong track?"

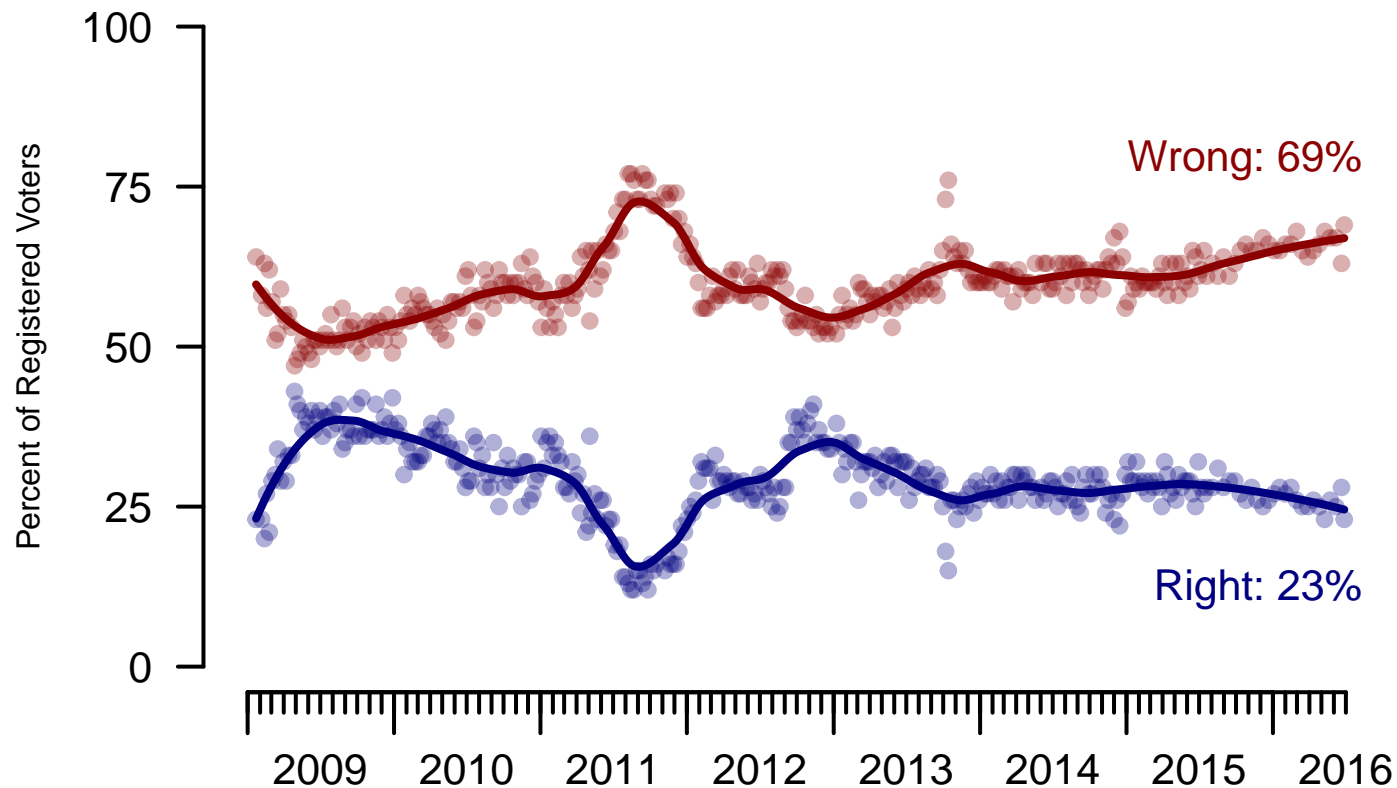


Figure 6: Direction of Country – Registered Voters

6. Direction of Country – This Week – All Adults

Would you say things in this country today are...

| | Age (4 category) | | | | | Race | | | Census Region | | | |
|---|------------------|------------|------------|------------|------------|--------------|------------|------------|---------------|------------|------------|------------|
| | Total | Under 30 | 30-44 | 45-64 | 65+ | White | Black | Hispanic | North-east | Mid-west | South | West |
| Generally headed in the right direction | 26% | 35% | 25% | 27% | 20% | 21% | 50% | 40% | 31% | 21% | 28% | 25% |
| Off on the wrong track | 63% | 55% | 58% | 65% | 71% | 68% | 43% | 50% | 54% | 69% | 62% | 65% |
| Not sure | 11% | 10% | 18% | 8% | 9% | 11% | 7% | 10% | 14% | 10% | 10% | 10% |
| Totals (Unweighted N) | 100% (1,300) | 100% (230) | 100% (323) | 100% (518) | 100% (229) | 100% (1,012) | 100% (149) | 100% (139) | 100% (256) | 100% (299) | 100% (482) | 100% (263) |

| | Party ID | | | Ideology | | | Gender | | Family Income (3 category) | | | | |
|---|--------------|------------|------------|------------|------------|------------|------------|------------|----------------------------|------------|------------|------------|-------------------|
| | Total | Dem | Ind | Rep | Lib | Mod | Con | Male | Female | Under 50 | 50-100 | 100+ | Prefer not to say |
| Generally headed in the right direction | 26% | 47% | 19% | 11% | 42% | 28% | 13% | 31% | 22% | 26% | 28% | 26% | 24% |
| Off on the wrong track | 63% | 42% | 70% | 80% | 42% | 59% | 83% | 60% | 65% | 63% | 65% | 63% | 58% |
| Not sure | 11% | 11% | 11% | 9% | 15% | 13% | 4% | 9% | 12% | 10% | 8% | 11% | 18% |
| Totals (Unweighted N) | 100% (1,300) | 100% (471) | 100% (477) | 100% (352) | 100% (343) | 100% (563) | 100% (394) | 100% (630) | 100% (670) | 100% (684) | 100% (304) | 100% (161) | 100% (151) |

| | |
|--|---|
| Sponsorship | <i>The Economist</i> |
| Fieldwork | YouGov |
| Interviewing Dates | June 24 - 27, 2016 |
| Target population | U.S. citizens, aged 18 and over. |
| Sampling method | Respondents were selected from YouGov's opt-in Internet panel using sample matching. A random sample (stratified by age, gender, race, education, and region) was selected from the 2010 American Community Study. Voter registration was imputed from the November 2010 Current Population Survey Registration and Voting Supplement. Religion, political interest, minor party identification, and non-placement on an ideology scale, were imputed from the 2008 Pew Religion in American Life Survey. |
| Weighting | The sample was weighted using propensity scores based on age, gender, race, education, news interest, voter registration, and non-placement on an ideology scale. The weights range from 0 to 6.15, with a mean of one and a standard deviation of 1. |
| Number of respondents | 1300 |
| Margin of error | ± 3.9% (adjusted for weighting) |
| Margin of error (Registered Voters) | ± 3.9% (adjusted for weighting) |
| Survey mode | Web-based interviews |
| Full results | Available online at http://today.yougov.com/news/categories/economist/ . |