

Interviewing: April 22 - 24, 2018
Sample: 1500 Adults nationwide online
1004 registered voters nationwide online



The Economist/YouGov Poll

Weekly Tracking

For immediate release

1. Presidential Job Approval – Historical

Do you approve or disapprove of the way [President's name] is handling his job as President?

	All Adults						
	Total Approve	Total Disapprove	Strongly Approve	Somewhat Approve	Somewhat Disapprove	Strongly Disapprove	Not Sure
April 20-24, 2018	38%	49%	21%	17%	12%	37%	13%
April 13-17, 2018	38%	53%	20%	18%	13%	40%	9%
April 6-10, 2018	40%	49%	20%	20%	9%	40%	11%
March 31-April 2, 2018	38%	52%	20%	18%	12%	40%	10%
March 24-26, 2018	39%	49%	19%	20%	9%	40%	12%
March 17-19, 2018	37%	52%	17%	20%	11%	41%	10%
March 10-12, 2018	39%	52%	21%	18%	13%	39%	9%
March 3-5, 2018	40%	50%	20%	20%	13%	37%	10%
February 24-26, 2018	40%	51%	21%	19%	9%	42%	9%
February 17-19, 2018	41%	48%	22%	19%	9%	39%	11%
One Year Ago	42%	49%	23%	19%	12%	37%	10%

	Registered Voters						
	Total Approve	Total Disapprove	Strongly Approve	Somewhat Approve	Somewhat Disapprove	Strongly Disapprove	Not Sure
April 20-24, 2018	43%	53%	26%	17%	11%	42%	5%
April 13-17, 2018	42%	55%	25%	17%	11%	44%	3%
April 6-10, 2018	42%	53%	24%	18%	9%	44%	4%
March 31-April 2, 2018	41%	55%	24%	17%	10%	45%	4%
March 24-26, 2018	41%	54%	23%	18%	10%	44%	5%
March 17-19, 2018	41%	54%	21%	20%	8%	46%	4%
March 10-12, 2018	42%	54%	25%	17%	10%	44%	4%
March 3-5, 2018	41%	54%	23%	18%	10%	44%	4%
February 24-26, 2018	44%	53%	27%	17%	7%	46%	4%
February 17-19, 2018	44%	51%	26%	18%	8%	43%	4%
One Year Ago	45%	49%	26%	19%	11%	38%	6%

Presidential Job Approval

"Do you approve or disapprove of the way Donald Trump is handling his job as President?"

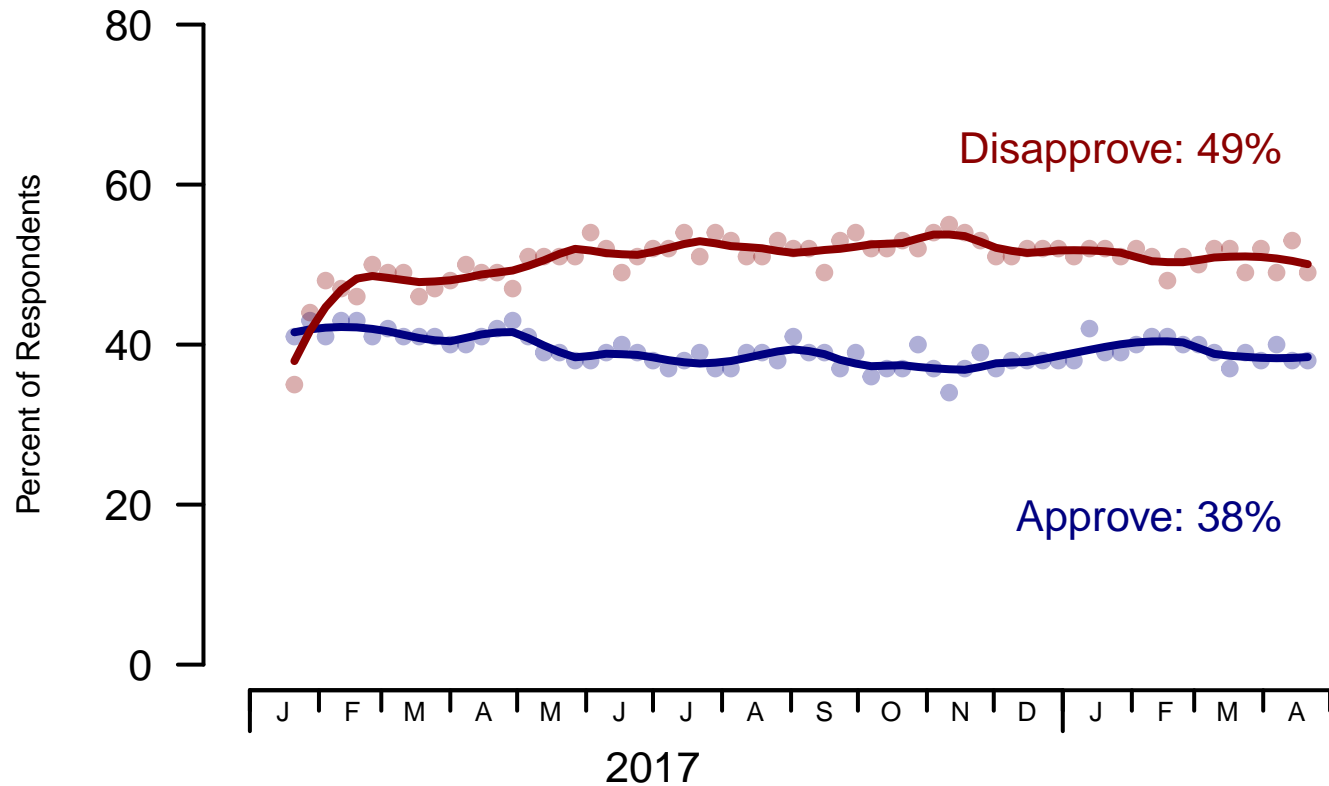


Figure 1: Trump Approval – All Adults

Presidential Job Approval

"Do you approve or disapprove of the way Donald Trump is handling his job as President?"

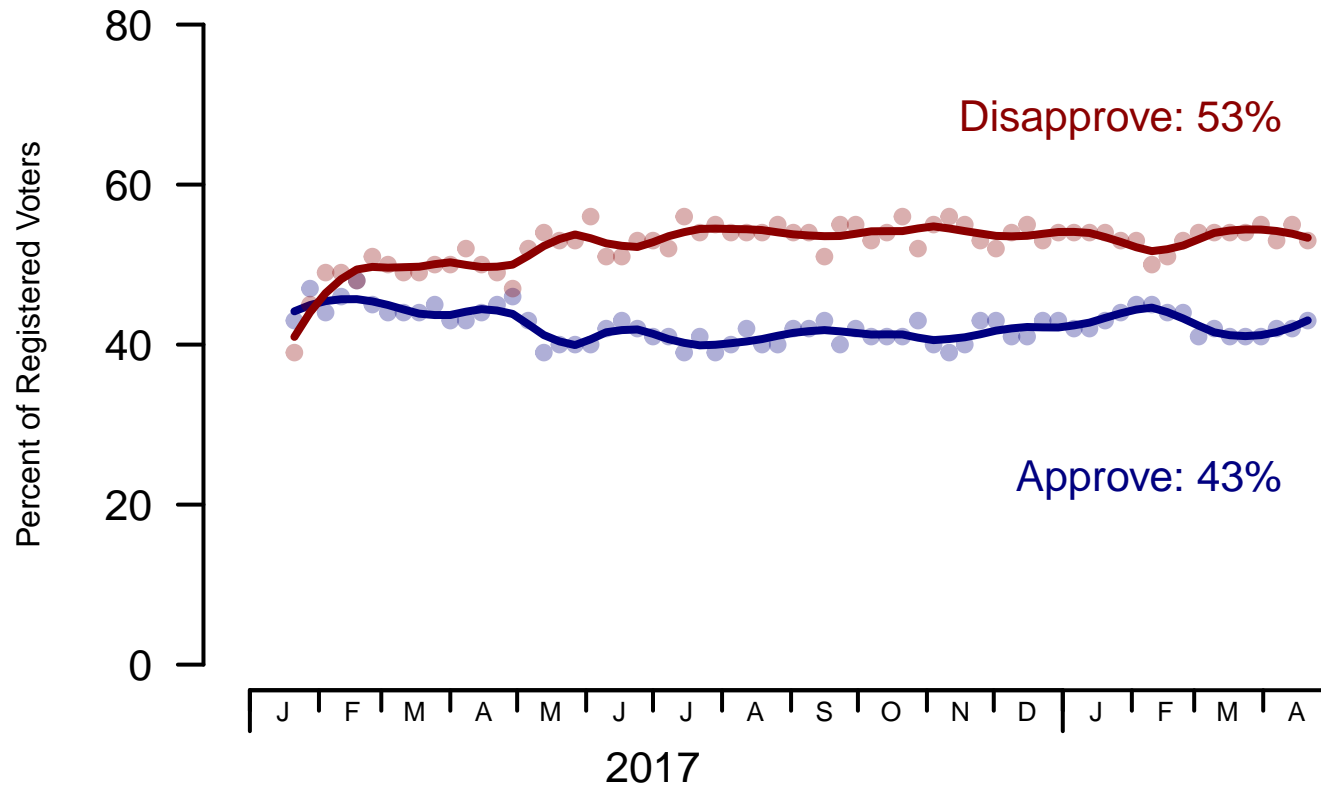


Figure 2: Trump Approval – Registered Voters

2. President Trump Job Approval – This Week – All Adults

Do you approve or disapprove of the way Donald Trump is handling his job as President?

	Age (4 category)					Race			Census Region			
	Total	Under 30	30-44	45-64	65+	White	Black	Hispanic	North-east	Mid-west	South	West
Strongly approve	21%	5%	12%	27%	37%	25%	4%	12%	21%	20%	22%	19%
Somewhat approve	17%	11%	18%	20%	17%	20%	6%	10%	12%	17%	20%	16%
Somewhat disapprove	12%	14%	14%	13%	7%	10%	17%	18%	14%	12%	12%	10%
Strongly disapprove	37%	44%	36%	34%	37%	34%	56%	39%	38%	41%	33%	40%
Not sure	13%	26%	21%	6%	2%	11%	18%	22%	16%	10%	13%	15%
Totals (Unweighted N)	100% (1,500)	100% (202)	100% (406)	100% (582)	100% (310)	100% (1,180)	100% (178)	100% (142)	100% (266)	100% (353)	100% (563)	100% (318)

	Party ID			Ideology			Gender		Family Income (3 category)			Prefer not to say	
	Total	Dem	Ind	Rep	Lib	Mod	Con	Male	Female	Under 50	50-100		100+
Strongly approve	21%	4%	15%	52%	3%	10%	46%	24%	17%	18%	21%	22%	27%
Somewhat approve	17%	6%	19%	28%	7%	15%	27%	19%	15%	17%	19%	20%	12%
Somewhat disapprove	12%	12%	14%	9%	9%	15%	10%	12%	12%	14%	9%	11%	10%
Strongly disapprove	37%	73%	31%	5%	77%	37%	9%	31%	43%	36%	45%	44%	23%
Not sure	13%	6%	22%	5%	4%	24%	7%	14%	12%	14%	6%	4%	27%
Totals (Unweighted N)	100% (1,500)	100% (504)	100% (607)	100% (389)	100% (413)	100% (569)	100% (518)	100% (678)	100% (822)	100% (659)	100% (416)	100% (218)	100% (207)

3. Approval of U.S. Congress – Historical

Overall, do you approve or disapprove of the way that the United States Congress is handling its job?

All Adults								
	Total Approve	Total Disapprove	Strongly Approve	Somewhat Approve	Neutral	Somewhat Disapprove	Strongly Disapprove	Not Sure
April 20-24, 2018	10%	58%	2%	8%	14%	23%	35%	18%
April 13-17, 2018	12%	58%	3%	9%	14%	21%	37%	16%
April 6-10, 2018	8%	63%	2%	6%	14%	23%	40%	15%
March 31-April 2, 2018	12%	59%	2%	10%	13%	21%	38%	16%
March 24-26, 2018	10%	62%	3%	7%	12%	21%	41%	16%
March 17-19, 2018	11%	57%	3%	8%	15%	21%	36%	17%
March 10-12, 2018	11%	59%	3%	8%	15%	22%	37%	15%
March 3-5, 2018	11%	57%	2%	9%	17%	22%	35%	15%
February 24-26, 2018	12%	62%	3%	9%	13%	22%	40%	13%
February 17-19, 2018	11%	59%	3%	8%	15%	20%	39%	15%
One Year Ago	12%	57%	3%	9%	16%	23%	34%	15%

Registered Voters								
	Total Approve	Total Disapprove	Strongly Approve	Somewhat Approve	Neutral	Somewhat Disapprove	Strongly Disapprove	Not Sure
April 20-24, 2018	10%	68%	2%	8%	13%	26%	42%	9%
April 13-17, 2018	11%	67%	3%	8%	13%	23%	44%	9%
April 6-10, 2018	8%	74%	2%	6%	10%	26%	48%	8%
March 31-April 2, 2018	11%	70%	2%	9%	11%	24%	46%	9%
March 24-26, 2018	8%	74%	2%	6%	11%	23%	51%	7%
March 17-19, 2018	11%	69%	3%	8%	14%	25%	44%	8%
March 10-12, 2018	10%	68%	2%	8%	13%	23%	45%	8%
March 3-5, 2018	11%	67%	2%	9%	15%	23%	44%	7%
February 24-26, 2018	13%	70%	3%	10%	11%	24%	46%	6%
February 17-19, 2018	10%	70%	2%	8%	13%	22%	48%	7%
One Year Ago	13%	61%	3%	10%	15%	24%	37%	11%

Congress Approval

"Do you approve of the way the U.S. Congress is handling its job?"

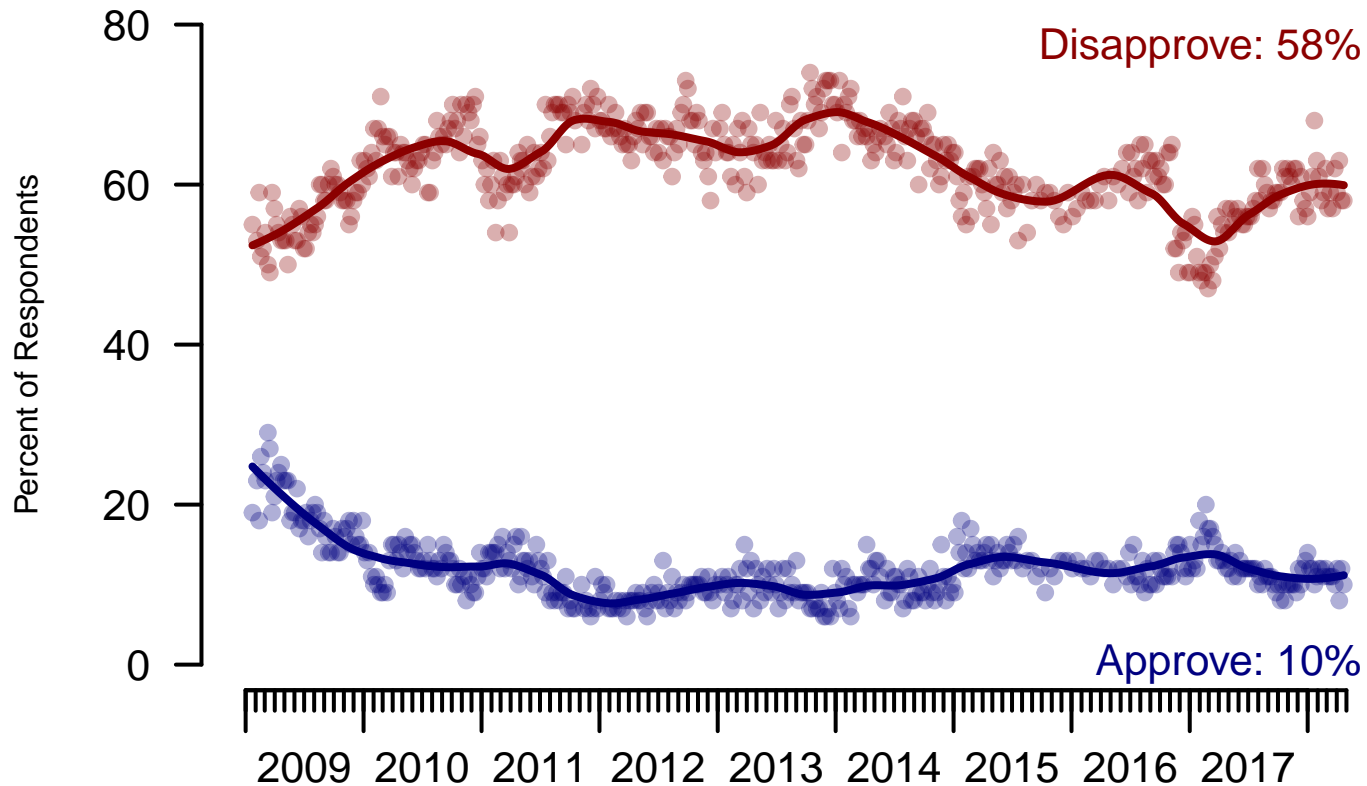


Figure 3: Congress Approval – All Adults

Congress Approval

"Do you approve of the way the
U.S. Congress is handling its job?"

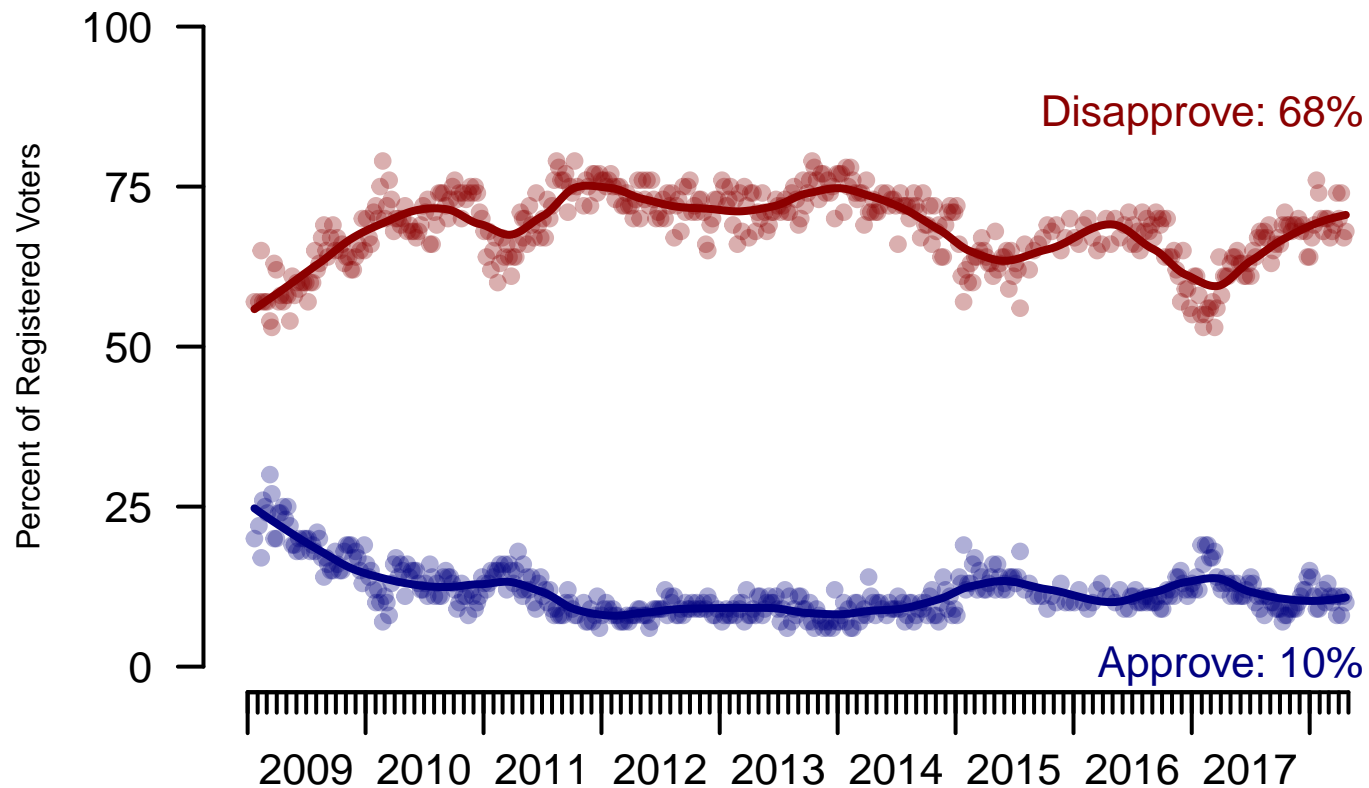


Figure 4: Congress Approval – Registered Voters

4. Approval of U.S. Congress – This Week – All Adults

Overall, do you approve or disapprove of the way that the United States Congress is handling its job?

	Age (4 category)					Race			Census Region			
	Total	Under 30	30-44	45-64	65+	White	Black	Hispanic	North-east	Mid-west	South	West
Strongly approve	2%	3%	3%	2%	1%	2%	2%	5%	1%	3%	3%	1%
Somewhat approve	8%	10%	8%	8%	7%	9%	5%	8%	8%	6%	9%	8%
Neither approve nor disapprove	14%	11%	15%	16%	10%	13%	15%	15%	16%	14%	13%	12%
Somewhat disapprove	23%	20%	18%	25%	30%	25%	16%	21%	22%	22%	27%	20%
Strongly disapprove	35%	24%	31%	38%	45%	35%	42%	24%	30%	40%	31%	39%
Not sure	18%	32%	24%	11%	8%	16%	21%	27%	23%	16%	16%	20%
Totals (Unweighted N)	100% (1,496)	100% (202)	100% (405)	100% (580)	100% (309)	100% (1,177)	100% (178)	100% (141)	100% (264)	100% (352)	100% (563)	100% (317)

	Party ID			Ideology			Gender		Family Income (3 category)				
	Total	Dem	Ind	Rep	Lib	Mod	Con	Male	Female	Under 50	50-100	100+	Prefer not to say
Strongly approve	2%	1%	2%	5%	2%	1%	5%	3%	2%	3%	2%	3%	0%
Somewhat approve	8%	6%	6%	15%	4%	7%	13%	9%	7%	9%	9%	8%	5%
Neither approve nor disapprove	14%	12%	14%	15%	11%	15%	13%	12%	16%	15%	12%	11%	14%
Somewhat disapprove	23%	22%	20%	32%	19%	21%	30%	25%	22%	21%	28%	25%	21%
Strongly disapprove	35%	47%	33%	22%	54%	28%	28%	37%	33%	30%	39%	46%	32%
Not sure	18%	12%	25%	12%	10%	29%	11%	15%	21%	22%	10%	7%	28%
Totals (Unweighted N)	100% (1,496)	100% (502)	100% (606)	100% (388)	100% (412)	100% (567)	100% (517)	100% (676)	100% (820)	100% (656)	100% (415)	100% (218)	100% (207)

5. Direction of country – Historical

Would you say things in this country today are...

	All Adults		
	Right Direction	Wrong Track	Not Sure
April 20-24, 2018	32%	53%	15%
April 13-17, 2018	32%	55%	13%
April 6-10, 2018	32%	54%	14%
March 31-April 2, 2018	33%	53%	15%
March 24-26, 2018	32%	54%	14%
March 17-19, 2018	31%	54%	15%
March 10-12, 2018	33%	53%	14%
March 3-5, 2018	33%	53%	13%
February 24-26, 2018	30%	56%	14%
February 17-19, 2018	33%	52%	15%
One Year Ago	32%	51%	17%

	Registered Voters		
	Right Direction	Wrong Track	Not Sure
April 20-24, 2018	36%	54%	9%
April 13-17, 2018	34%	56%	9%
April 6-10, 2018	35%	56%	10%
March 31-April 2, 2018	35%	55%	11%
March 24-26, 2018	34%	57%	9%
March 17-19, 2018	35%	54%	11%
March 10-12, 2018	36%	54%	10%
March 3-5, 2018	34%	56%	10%
February 24-26, 2018	34%	58%	9%
February 17-19, 2018	35%	55%	10%
One Year Ago	33%	53%	14%

Direction of Country

"Would you say things in this country today are generally headed in the right direction or off on the wrong track?"

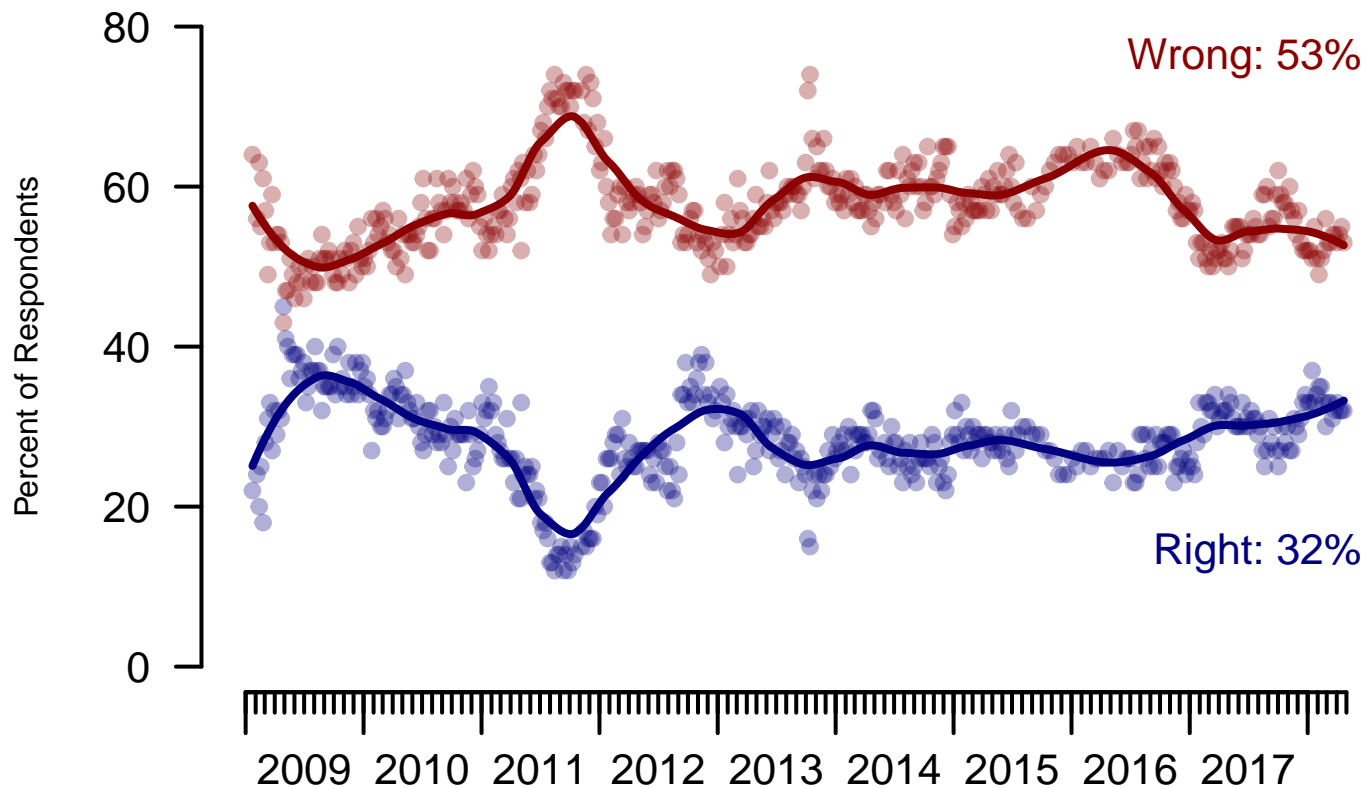


Figure 5: Direction of Country – All Adults

Direction of Country

"Would you say things in this country today are generally headed in the right direction or off on the wrong track?"

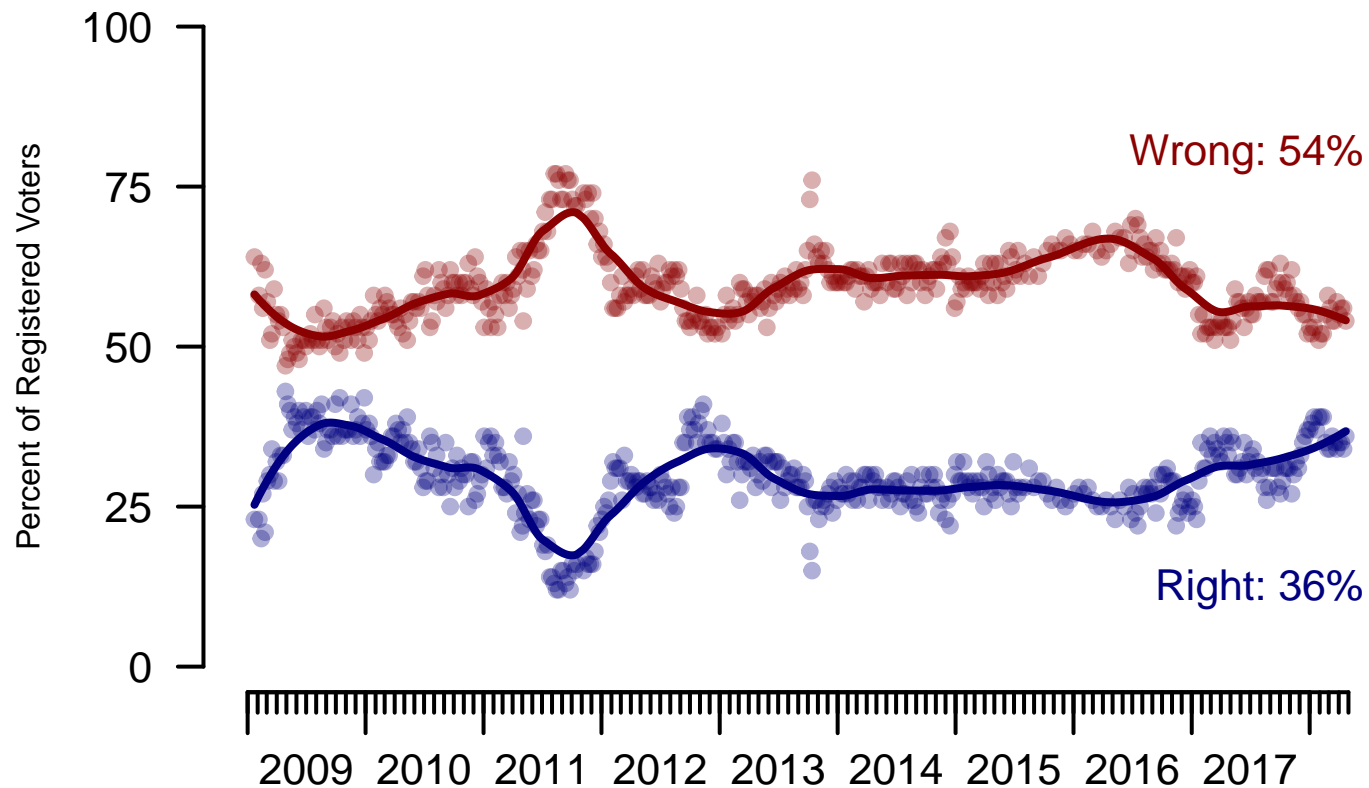


Figure 6: Direction of Country – Registered Voters

6. Direction of Country – This Week – All Adults

Would you say things in this country today are...

	Age (4 category)					Race			Census Region			
	Total	Under 30	30-44	45-64	65+	White	Black	Hispanic	North-east	Mid-west	South	West
Generally headed in the right direction	32%	16%	31%	38%	43%	38%	11%	22%	31%	31%	37%	28%
Off on the wrong track	53%	59%	52%	52%	48%	48%	75%	57%	52%	53%	51%	57%
Not sure	15%	25%	17%	10%	9%	14%	15%	22%	17%	16%	12%	15%
Totals (Unweighted N)	100% (1,500)	100% (202)	100% (406)	100% (582)	100% (310)	100% (1,180)	100% (178)	100% (142)	100% (266)	100% (353)	100% (563)	100% (318)

	Party ID			Ideology			Gender		Family Income (3 category)				
	Total	Dem	Ind	Rep	Lib	Mod	Con	Male	Female	Under 50	50-100	100+	Prefer not to say
Generally headed in the right direction	32%	13%	28%	65%	9%	25%	58%	38%	27%	28%	39%	38%	30%
Off on the wrong track	53%	79%	50%	25%	81%	55%	30%	45%	60%	56%	53%	53%	42%
Not sure	15%	8%	22%	10%	9%	20%	12%	17%	13%	16%	8%	9%	27%
Totals (Unweighted N)	100% (1,500)	100% (504)	100% (607)	100% (389)	100% (413)	100% (569)	100% (518)	100% (678)	100% (822)	100% (659)	100% (416)	100% (218)	100% (207)

The Economist/YouGov Poll
April 22 - 24, 2018



Sponsorship	<i>The Economist</i>
Fieldwork	YouGov
Interviewing Dates	April 22 - 24, 2018
Target population	U.S. citizens, aged 18 and over.
Sampling method	Respondents were selected from YouGov's opt-in Internet panel using sample matching. A random sample (stratified by age, gender, race, education, and region) was selected from the 2014 American Community Study. Voter registration was imputed from the November 2014 Current Population Survey Registration and Voting Supplement.
Weighting	The sample was weighted based on age, gender, race, education, and 2016 Presidential vote. The weights range from 0.17 to 5.34, with a mean of one and a standard deviation of 0.6.
Number of respondents	1500
Margin of error	± 3% (adjusted for weighting)
Margin of error (Registered Voters)	± 3.2% (adjusted for weighting)
Survey mode	Web-based interviews
Full results	Available online at http://today.yougov.com/news/categories/economist/ .