

Interviewing: December 9 - 11, 2018  
Sample: 1500 Adults nationwide online  
1045 registered voters nationwide online



# *The Economist/YouGov* Poll

## Weekly Tracking

For immediate release

**1. Presidential Job Approval – Historical**

Do you approve or disapprove of the way [President's name] is handling his job as President?

	All Adults						
	Total Approve	Total Disapprove	Strongly Approve	Somewhat Approve	Somewhat Disapprove	Strongly Disapprove	Not Sure
December 7-11, 2018	43%	49%	23%	20%	11%	38%	9%
November 30-December 4, 2018	43%	48%	24%	19%	10%	38%	8%
November 23-27, 2018	40%	52%	22%	18%	11%	41%	9%
November 17-19, 2018	40%	49%	24%	16%	8%	41%	11%
November 10-12, 2018	41%	51%	25%	16%	10%	41%	8%
November 3-5, 2018	40%	49%	25%	15%	12%	37%	11%
October 27-29, 2018	40%	52%	23%	17%	11%	41%	9%
October 20-22, 2018	42%	50%	24%	18%	10%	40%	9%
October 13-15, 2018	41%	48%	26%	15%	10%	38%	12%
October 6-8, 2018	40%	50%	23%	17%	10%	40%	11%
One Year Ago	38%	51%	20%	18%	9%	42%	12%

	Registered Voters						
	Total Approve	Total Disapprove	Strongly Approve	Somewhat Approve	Somewhat Disapprove	Strongly Disapprove	Not Sure
December 7-11, 2018	43%	54%	27%	16%	9%	45%	3%
November 30-December 4, 2018	46%	52%	30%	16%	7%	45%	3%
November 23-27, 2018	45%	53%	27%	18%	7%	46%	3%
November 17-19, 2018	45%	53%	31%	14%	7%	46%	3%
November 10-12, 2018	45%	54%	30%	15%	8%	46%	2%
November 3-5, 2018	45%	52%	32%	13%	8%	44%	3%
October 27-29, 2018	44%	52%	28%	16%	8%	44%	3%
October 20-22, 2018	45%	52%	29%	16%	8%	44%	3%
October 13-15, 2018	45%	52%	31%	14%	8%	44%	4%
October 6-8, 2018	43%	53%	28%	15%	7%	46%	4%
One Year Ago	41%	54%	23%	18%	9%	45%	4%

## Presidential Job Approval

"Do you approve or disapprove of the way Donald Trump is handling his job as President?"

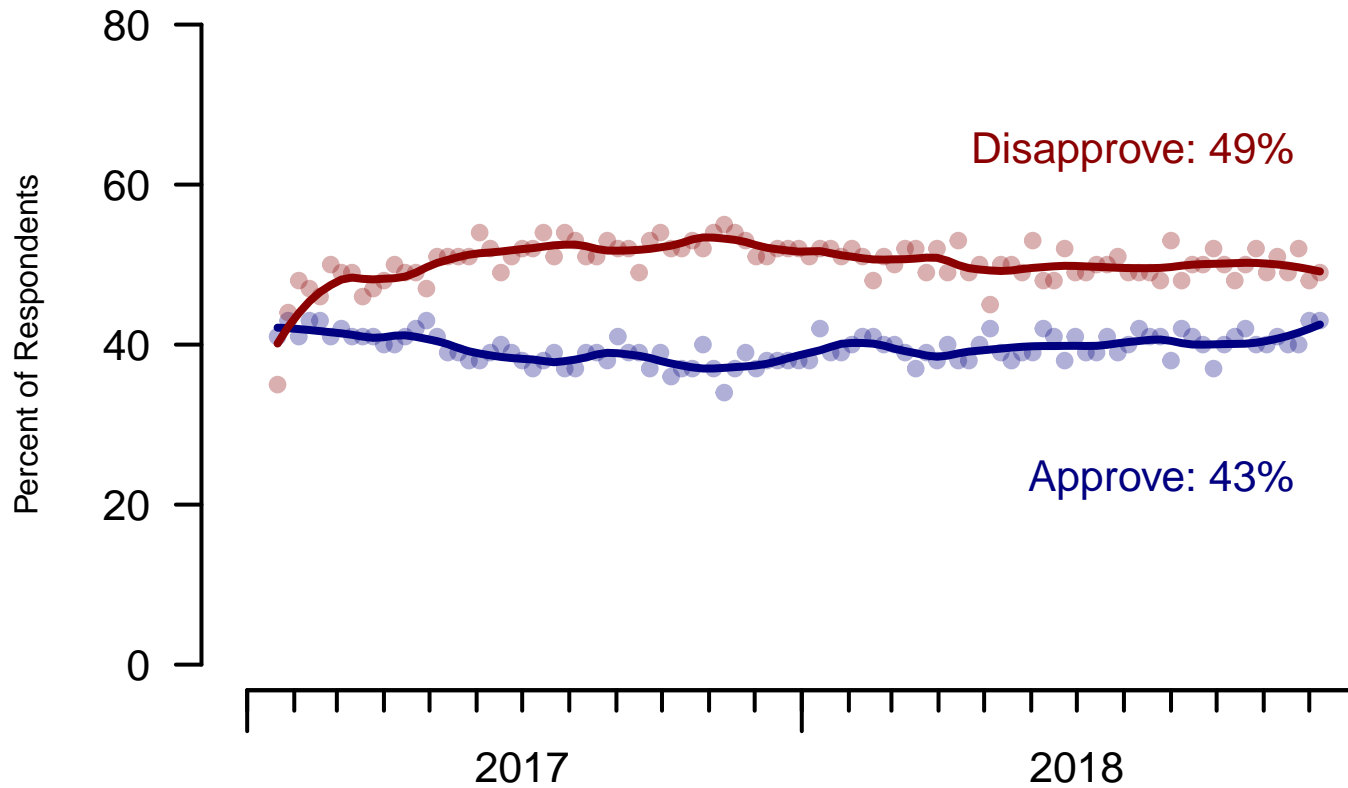


Figure 1: Trump Approval – All Adults

## Presidential Job Approval

"Do you approve or disapprove of the way Donald Trump is handling his job as President?"

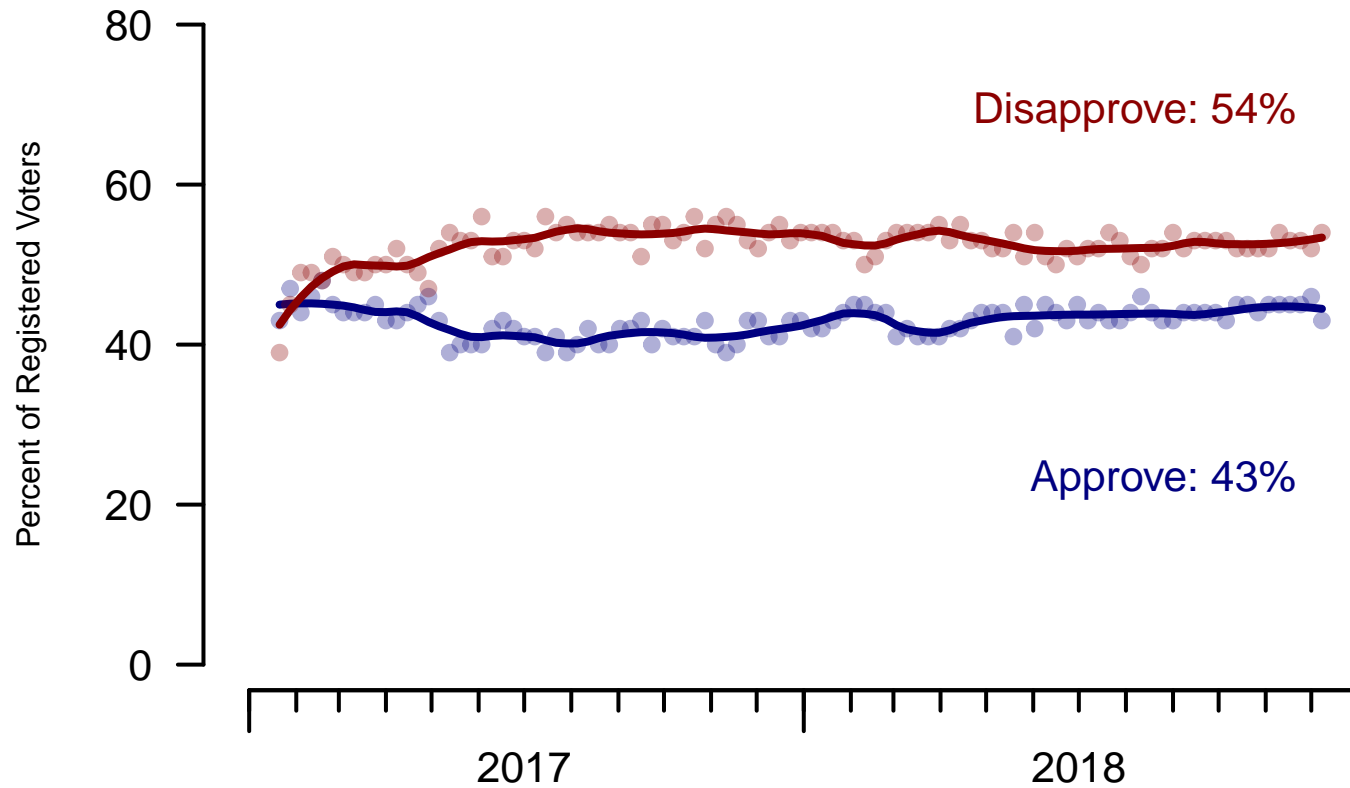


Figure 2: Trump Approval – Registered Voters

**2. President Trump Job Approval – This Week – All Adults**

Do you approve or disapprove of the way Donald Trump is handling his job as President?

	Age (4 category)					Race			Census Region			
	Total	Under 30	30-44	45-64	65+	White	Black	Hispanic	North-east	Mid-west	South	West
Strongly approve	23%	7%	16%	29%	35%	28%	5%	8%	17%	22%	24%	24%
Somewhat approve	20%	25%	21%	18%	16%	21%	5%	29%	23%	19%	20%	17%
Somewhat disapprove	11%	17%	11%	10%	6%	8%	19%	19%	10%	8%	10%	16%
Strongly disapprove	38%	33%	37%	41%	41%	36%	56%	35%	40%	39%	37%	37%
Not sure	9%	19%	16%	3%	2%	8%	16%	10%	9%	11%	9%	6%
Totals (Unweighted N)	100% (1,500)	100% (230)	100% (308)	100% (650)	100% (312)	100% (1,194)	100% (172)	100% (134)	100% (263)	100% (342)	100% (592)	100% (303)

	Party ID			Ideology			Gender		Family Income (3 category)			Prefer not to say	
	Total	Dem	Ind	Rep	Lib	Mod	Con	Male	Female	Under 50	50-100		100+
Strongly approve	23%	3%	20%	52%	3%	12%	52%	27%	18%	19%	26%	19%	33%
Somewhat approve	20%	9%	20%	32%	8%	20%	28%	23%	17%	19%	17%	29%	16%
Somewhat disapprove	11%	12%	13%	4%	7%	15%	7%	10%	11%	15%	9%	4%	4%
Strongly disapprove	38%	74%	30%	6%	78%	35%	9%	32%	44%	35%	42%	44%	34%
Not sure	9%	3%	16%	5%	4%	17%	3%	8%	10%	11%	6%	4%	13%
Totals (Unweighted N)	100% (1,500)	100% (501)	100% (597)	100% (402)	100% (433)	100% (553)	100% (514)	100% (679)	100% (821)	100% (655)	100% (390)	100% (269)	100% (186)

**3. Approval of U.S. Congress – Historical**

Overall, do you approve or disapprove of the way that the United States Congress is handling its job?

	All Adults							
	Total Approve	Total Disapprove	Strongly Approve	Somewhat Approve	Neutral	Somewhat Disapprove	Strongly Disapprove	Not Sure
December 7-11, 2018	13%	57%	3%	10%	16%	23%	34%	13%
November 30-December 4, 2018	13%	56%	3%	10%	17%	22%	34%	13%
November 23-27, 2018	13%	58%	2%	11%	14%	24%	34%	15%
November 17-19, 2018	12%	59%	2%	10%	16%	25%	34%	13%
November 10-12, 2018	13%	57%	4%	9%	16%	24%	33%	14%
November 3-5, 2018	15%	56%	3%	12%	14%	20%	36%	15%
October 27-29, 2018	12%	63%	2%	10%	14%	24%	39%	11%
October 20-22, 2018	14%	58%	2%	12%	15%	22%	36%	13%
October 13-15, 2018	14%	54%	3%	11%	15%	19%	35%	16%
October 6-8, 2018	15%	57%	4%	11%	16%	21%	36%	13%
One Year Ago	10%	61%	2%	8%	15%	23%	38%	15%

	Registered Voters							
	Total Approve	Total Disapprove	Strongly Approve	Somewhat Approve	Neutral	Somewhat Disapprove	Strongly Disapprove	Not Sure
December 7-11, 2018	13%	69%	3%	10%	12%	27%	42%	6%
November 30-December 4, 2018	13%	68%	3%	10%	13%	27%	41%	6%
November 23-27, 2018	14%	68%	2%	12%	11%	27%	41%	7%
November 17-19, 2018	13%	66%	3%	10%	15%	26%	40%	6%
November 10-12, 2018	13%	68%	3%	10%	12%	27%	41%	7%
November 3-5, 2018	16%	66%	3%	13%	12%	23%	43%	6%
October 27-29, 2018	15%	69%	3%	12%	11%	24%	45%	6%
October 20-22, 2018	15%	68%	2%	13%	11%	25%	43%	6%
October 13-15, 2018	16%	65%	4%	12%	13%	22%	43%	7%
October 6-8, 2018	15%	67%	3%	12%	13%	23%	44%	5%
One Year Ago	12%	69%	2%	10%	13%	27%	42%	6%

### Congress Approval

"Do you approve of the way the  
U.S. Congress is handling its job?"

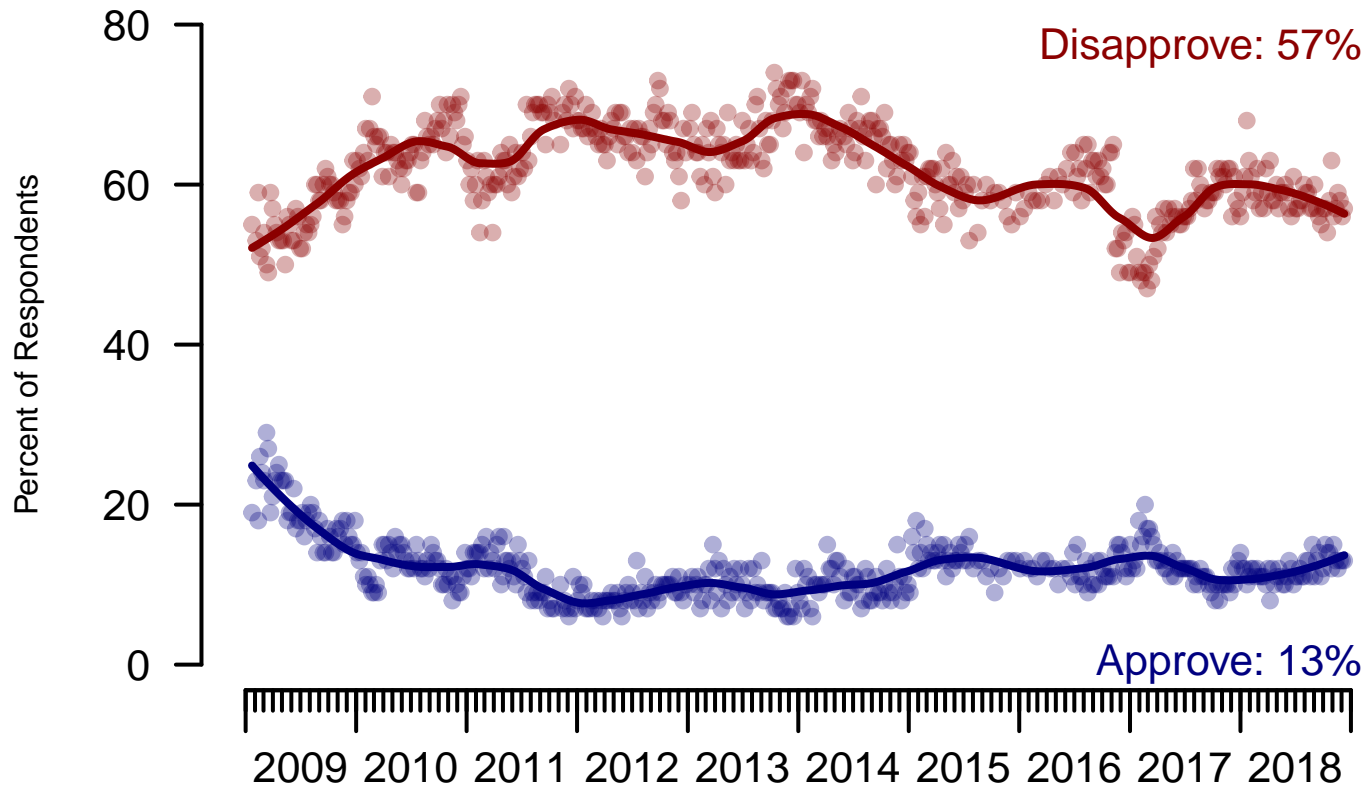


Figure 3: Congress Approval – All Adults

## Congress Approval

"Do you approve of the way the  
U.S. Congress is handling its job?"

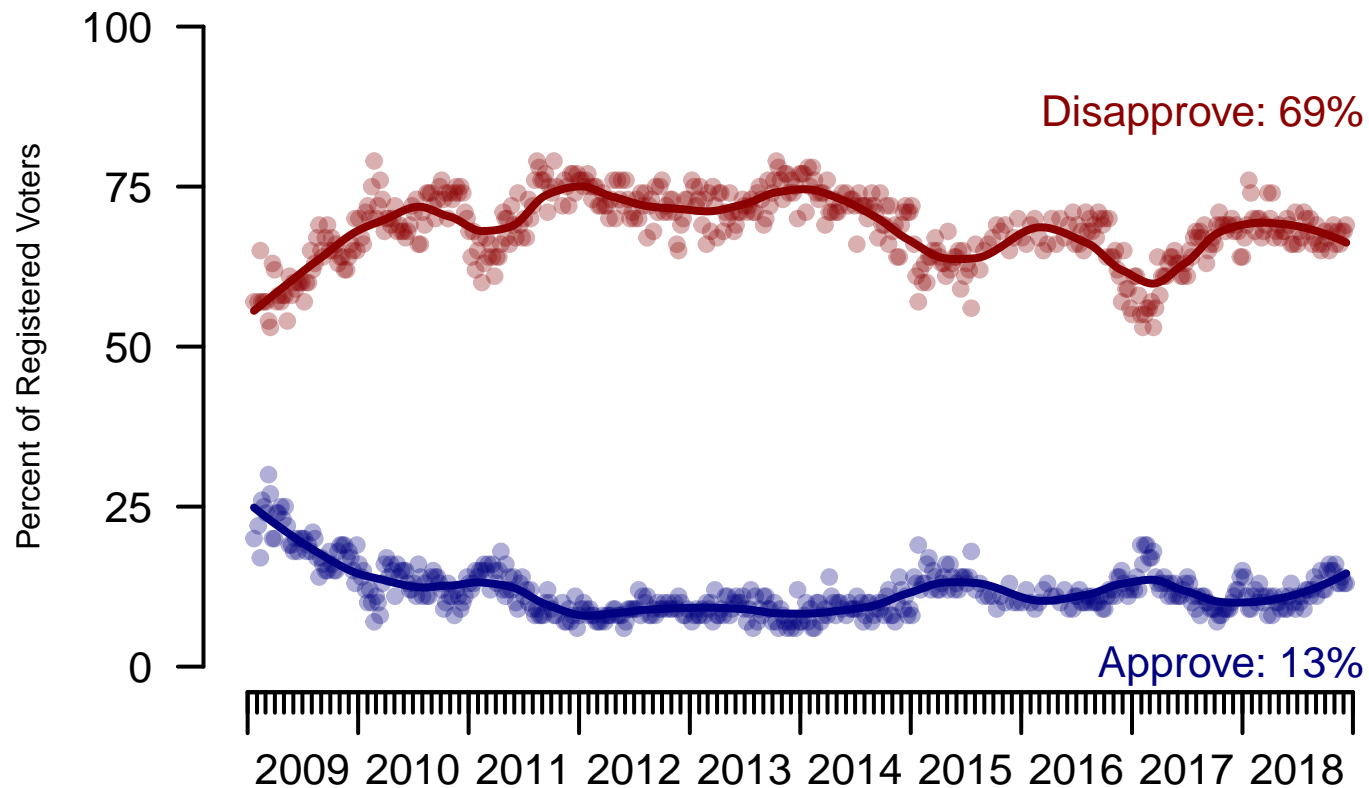


Figure 4: Congress Approval – Registered Voters

**4. Approval of U.S. Congress – This Week – All Adults**

Overall, do you approve or disapprove of the way that the United States Congress is handling its job?

	Age (4 category)					Race			Census Region			
	Total	Under 30	30-44	45-64	65+	White	Black	Hispanic	North-east	Mid-west	South	West
Strongly approve	3%	5%	8%	1%	1%	3%	4%	8%	4%	3%	3%	5%
Somewhat approve	10%	13%	12%	10%	6%	11%	3%	13%	10%	8%	13%	7%
Neither approve nor disapprove	16%	20%	18%	16%	10%	15%	21%	21%	22%	20%	13%	13%
Somewhat disapprove	23%	16%	16%	27%	32%	25%	19%	15%	17%	23%	24%	27%
Strongly disapprove	34%	24%	28%	39%	45%	36%	32%	26%	32%	35%	34%	36%
Not sure	13%	22%	19%	7%	6%	11%	20%	18%	14%	12%	12%	13%
Totals (Unweighted N)	100% (1,496)	100% (228)	100% (307)	100% (649)	100% (312)	100% (1,190)	100% (172)	100% (134)	100% (262)	100% (342)	100% (591)	100% (301)

	Party ID			Ideology			Gender		Family Income (3 category)				
	Total	Dem	Ind	Rep	Lib	Mod	Con	Male	Female	Under 50	50-100	100+	Prefer not to say
Strongly approve	3%	2%	2%	8%	3%	2%	5%	4%	3%	2%	3%	6%	4%
Somewhat approve	10%	8%	6%	19%	5%	11%	13%	11%	9%	10%	9%	15%	5%
Neither approve nor disapprove	16%	16%	17%	15%	9%	21%	16%	16%	17%	20%	16%	11%	10%
Somewhat disapprove	23%	17%	23%	31%	18%	19%	33%	23%	24%	21%	25%	22%	29%
Strongly disapprove	34%	51%	31%	19%	60%	26%	25%	38%	31%	29%	40%	41%	35%
Not sure	13%	6%	20%	7%	6%	21%	7%	9%	16%	17%	7%	5%	18%
Totals (Unweighted N)	100% (1,496)	100% (501)	100% (594)	100% (401)	100% (433)	100% (552)	100% (511)	100% (678)	100% (818)	100% (651)	100% (390)	100% (269)	100% (186)

**5. Direction of country – Historical**

Would you say things in this country today are...

	All Adults		
	Right Direction	Wrong Track	Not Sure
December 7-11, 2018	38%	48%	14%
November 30-December 4, 2018	37%	52%	11%
November 23-27, 2018	37%	50%	13%
November 17-19, 2018	34%	51%	15%
November 10-12, 2018	34%	51%	15%
November 3-5, 2018	36%	49%	15%
October 27-29, 2018	35%	53%	11%
October 20-22, 2018	37%	49%	13%
October 13-15, 2018	36%	48%	15%
October 6-8, 2018	35%	51%	14%
One Year Ago	31%	53%	16%

	Registered Voters		
	Right Direction	Wrong Track	Not Sure
December 7-11, 2018	39%	53%	8%
November 30-December 4, 2018	39%	53%	7%
November 23-27, 2018	39%	52%	9%
November 17-19, 2018	38%	53%	9%
November 10-12, 2018	35%	56%	9%
November 3-5, 2018	41%	52%	7%
October 27-29, 2018	38%	55%	7%
October 20-22, 2018	40%	52%	8%
October 13-15, 2018	40%	53%	7%
October 6-8, 2018	38%	54%	8%
One Year Ago	35%	55%	10%

## Direction of Country

"Would you say things in this country today are generally headed in the right direction or off on the wrong track?"

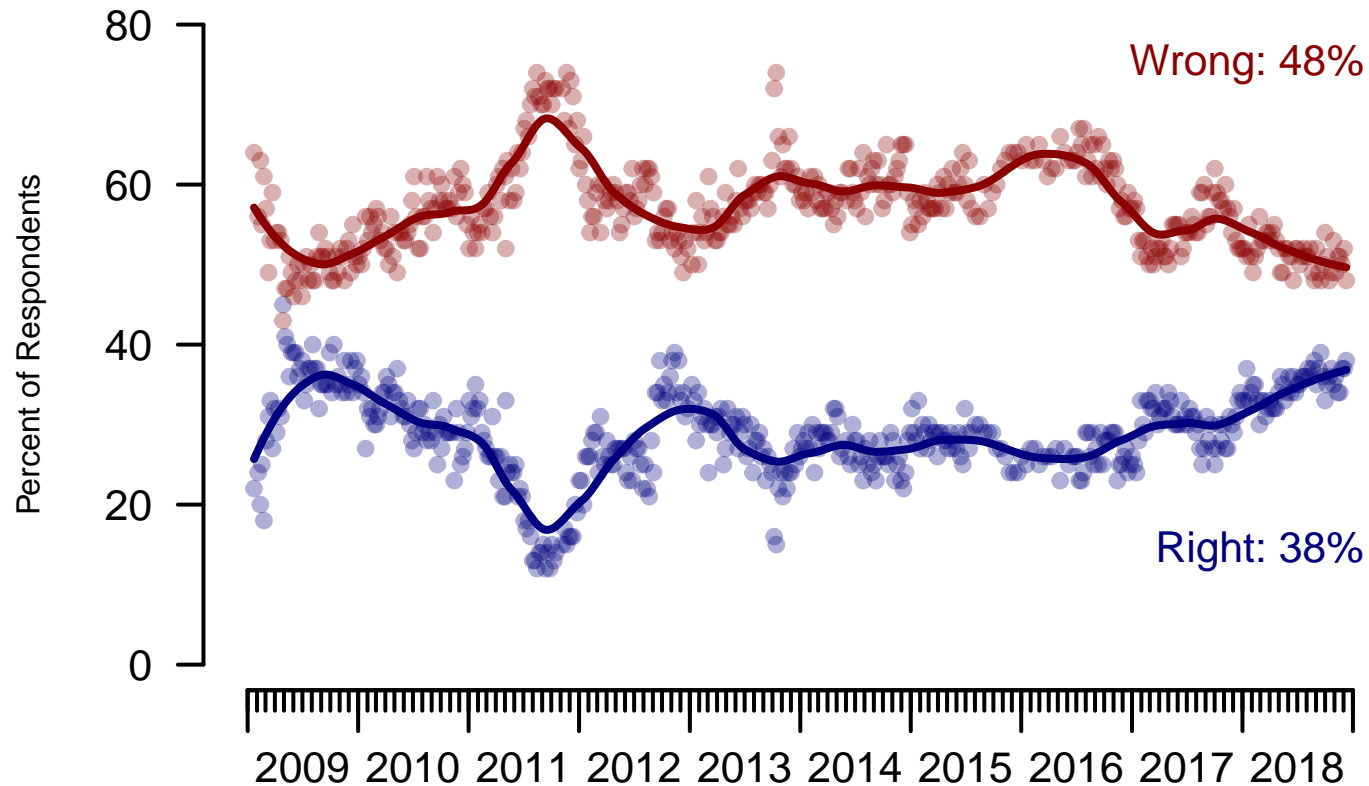


Figure 5: Direction of Country – All Adults

### Direction of Country

"Would you say things in this country today are generally headed in the right direction or off on the wrong track?"

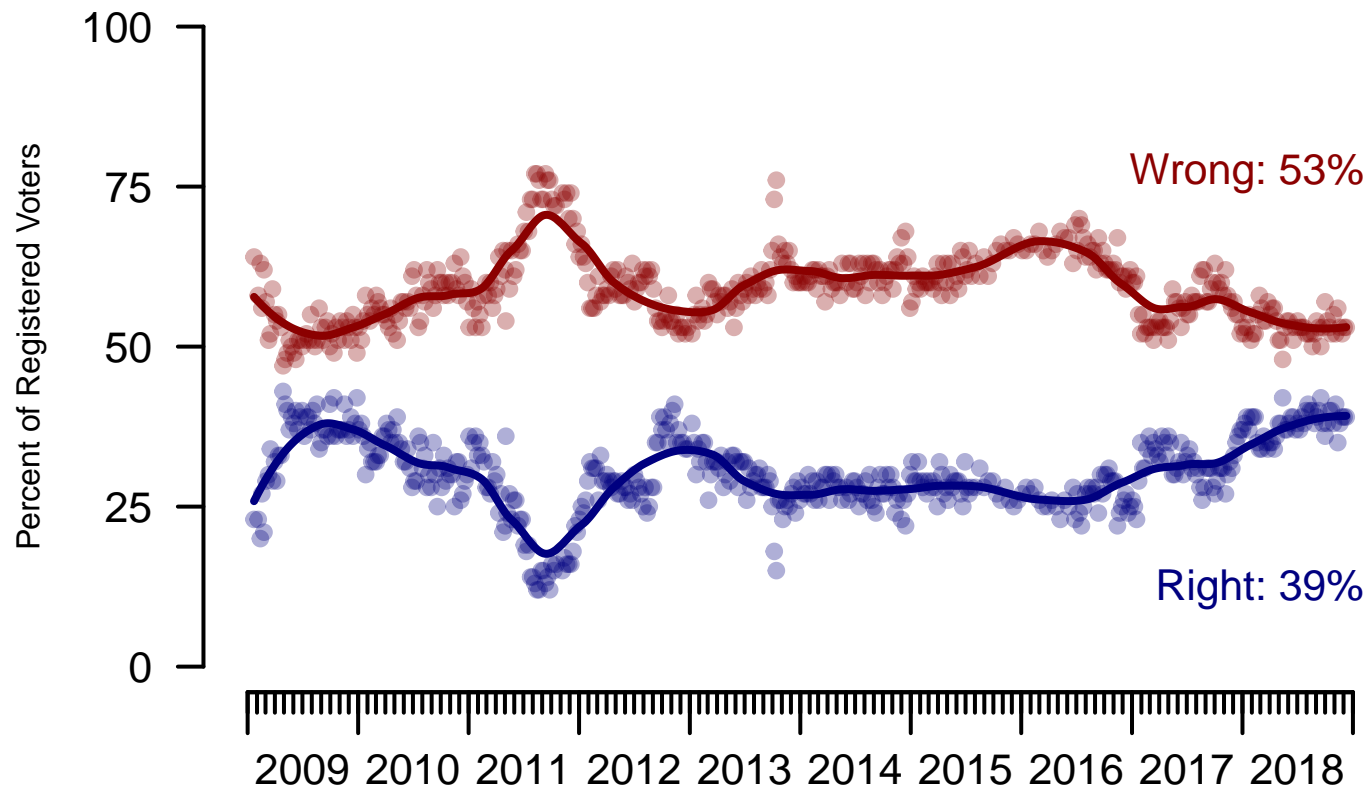


Figure 6: Direction of Country – Registered Voters

**6. Direction of Country – This Week – All Adults**

Would you say things in this country today are...

	Age (4 category)					Race			Census Region			
	Total	Under 30	30-44	45-64	65+	White	Black	Hispanic	North-east	Mid-west	South	West
Generally headed in the right direction	38%	33%	36%	40%	45%	42%	16%	41%	33%	38%	40%	41%
Off on the wrong track	48%	48%	46%	49%	48%	46%	66%	41%	54%	46%	48%	45%
Not sure	14%	19%	18%	11%	7%	12%	17%	18%	13%	16%	12%	15%
Totals (Unweighted N)	100% (1,500)	100% (230)	100% (308)	100% (650)	100% (312)	100% (1,194)	100% (172)	100% (134)	100% (263)	100% (342)	100% (592)	100% (303)

	Party ID			Ideology			Gender		Family Income (3 category)				
	Total	Dem	Ind	Rep	Lib	Mod	Con	Male	Female	Under 50	50-100	100+	Prefer not to say
Generally headed in the right direction	38%	15%	34%	75%	15%	29%	70%	44%	33%	38%	36%	42%	43%
Off on the wrong track	48%	76%	45%	18%	79%	46%	24%	45%	51%	46%	52%	51%	44%
Not sure	14%	9%	21%	7%	6%	25%	6%	11%	16%	17%	12%	7%	13%
Totals (Unweighted N)	100% (1,500)	100% (501)	100% (597)	100% (402)	100% (433)	100% (553)	100% (514)	100% (679)	100% (821)	100% (655)	100% (390)	100% (269)	100% (186)

**The Economist/YouGov Poll**  
December 9 - 11, 2018



<b>Sponsorship</b>	<i>The Economist</i>
<b>Fieldwork</b>	YouGov
<b>Interviewing Dates</b>	December 9 - 11, 2018
<b>Target population</b>	U.S. citizens, aged 18 and over.
<b>Sampling method</b>	Respondents were selected from YouGov's opt-in Internet panel using sample matching. A random sample (stratified by age, gender, race, education, and region) was selected from the 2014 American Community Study. Voter registration was imputed from the November 2014 Current Population Survey Registration and Voting Supplement.
<b>Weighting</b>	The sample was weighted based on age, gender, race, education, and 2016 Presidential vote. The weights range from 0.32 to 6.5, with a mean of one and a standard deviation of 0.7.
<b>Number of respondents</b>	1500
<b>Margin of error</b>	± 3.1% (adjusted for weighting)
<b>Margin of error (Registered Voters)</b>	± 3.1% (adjusted for weighting)
<b>Survey mode</b>	Web-based interviews
<b>Full results</b>	Available online at <a href="http://today.yougov.com/news/categories/economist/">http://today.yougov.com/news/categories/economist/</a> .