

Interviewing: January 23 - 25, 2017
Sample: 2692 Adults nationwide online
1957 registered voters nationwide online



The Economist/YouGov Poll

Weekly Tracking

For immediate release

1. Approval of Obama as President – Historical

Do you approve or disapprove of the way Barack Obama is handling his job as President?

	All Adults						
	Total Approve	Total Disapprove	Strongly Approve	Somewhat Approve	Somewhat Disapprove	Strongly Disapprove	Not Sure
January 20-24, 2017	49%	43%	27%	22%	13%	30%	7%
January 13-17, 2017	52%	40%	32%	20%	13%	27%	8%
January 6-10, 2017	49%	43%	26%	23%	12%	31%	9%
December 31, 2016 - January 2, 2017	50%	42%	26%	24%	13%	29%	8%
December 24-26, 2016	48%	43%	25%	23%	14%	29%	10%
December 17-19, 2016	48%	43%	24%	24%	11%	32%	9%
December 10-12, 2016	48%	42%	25%	23%	14%	28%	9%
December 3-5, 2016	52%	40%	30%	22%	11%	29%	9%
November 26-28, 2016	51%	41%	28%	23%	13%	28%	8%
November 19-21, 2016	52%	40%	29%	23%	15%	25%	8%
One Year Ago	43%	52%	20%	23%	13%	39%	5%

	Registered Voters						
	Total Approve	Total Disapprove	Strongly Approve	Somewhat Approve	Somewhat Disapprove	Strongly Disapprove	Not Sure
January 20-24, 2017	53%	44%	31%	22%	11%	33%	3%
January 13-17, 2017	54%	42%	36%	18%	11%	31%	4%
January 6-10, 2017	51%	46%	29%	22%	12%	34%	4%
December 31, 2016 - January 2, 2017	51%	43%	28%	23%	11%	32%	5%
December 24-26, 2016	51%	44%	28%	23%	12%	32%	5%
December 17-19, 2016	50%	44%	27%	23%	10%	34%	5%
December 10-12, 2016	51%	45%	30%	21%	12%	33%	5%
December 3-5, 2016	52%	45%	32%	20%	12%	33%	3%
November 26-28, 2016	52%	45%	30%	22%	13%	32%	4%
November 19-21, 2016	55%	41%	33%	22%	12%	29%	4%
One Year Ago	43%	55%	22%	21%	12%	43%	2%

Obama Approval

"Do you approve or disapprove of the way Barack Obama is handling his job as President?"

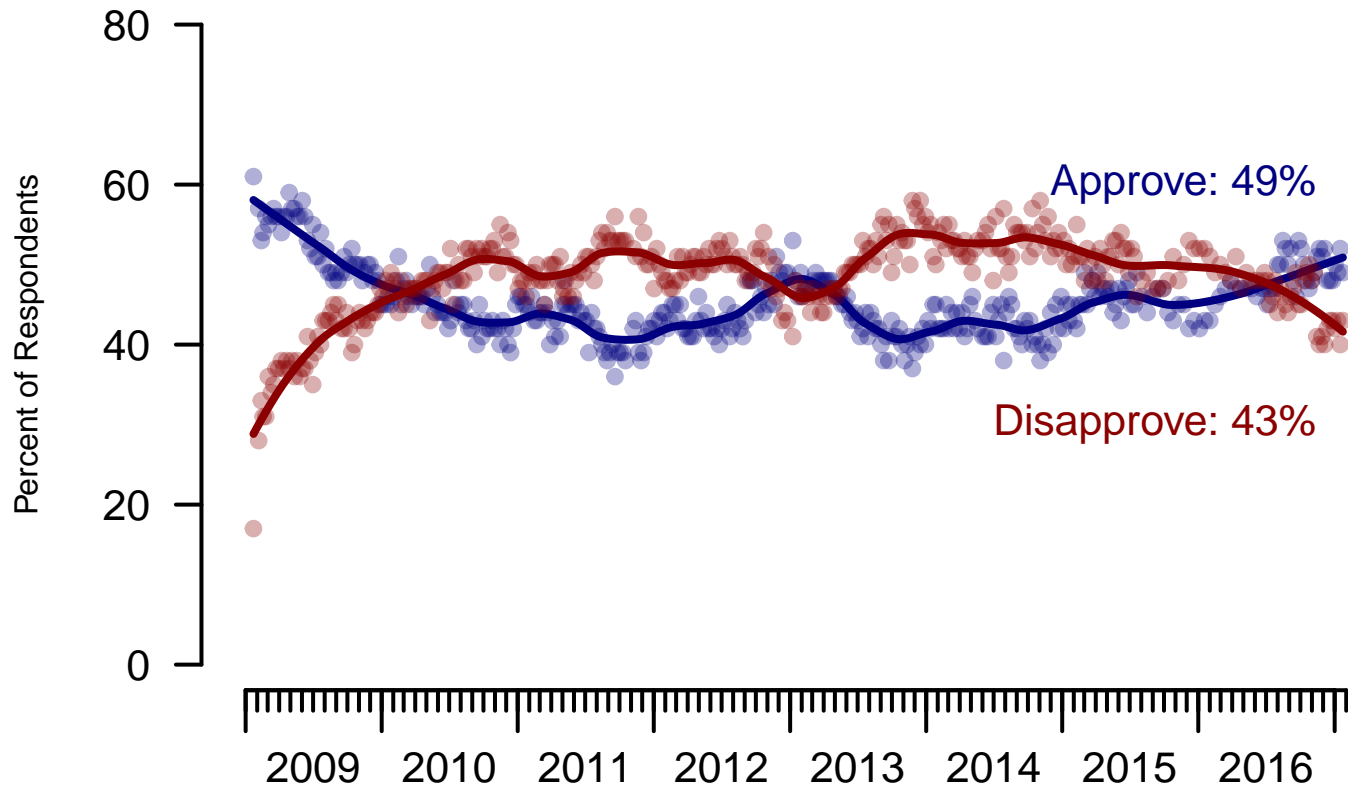


Figure 1: Obama Approval – All Adults

Obama Approval

"Do you approve or disapprove of the way Barack Obama is handling his job as President?"

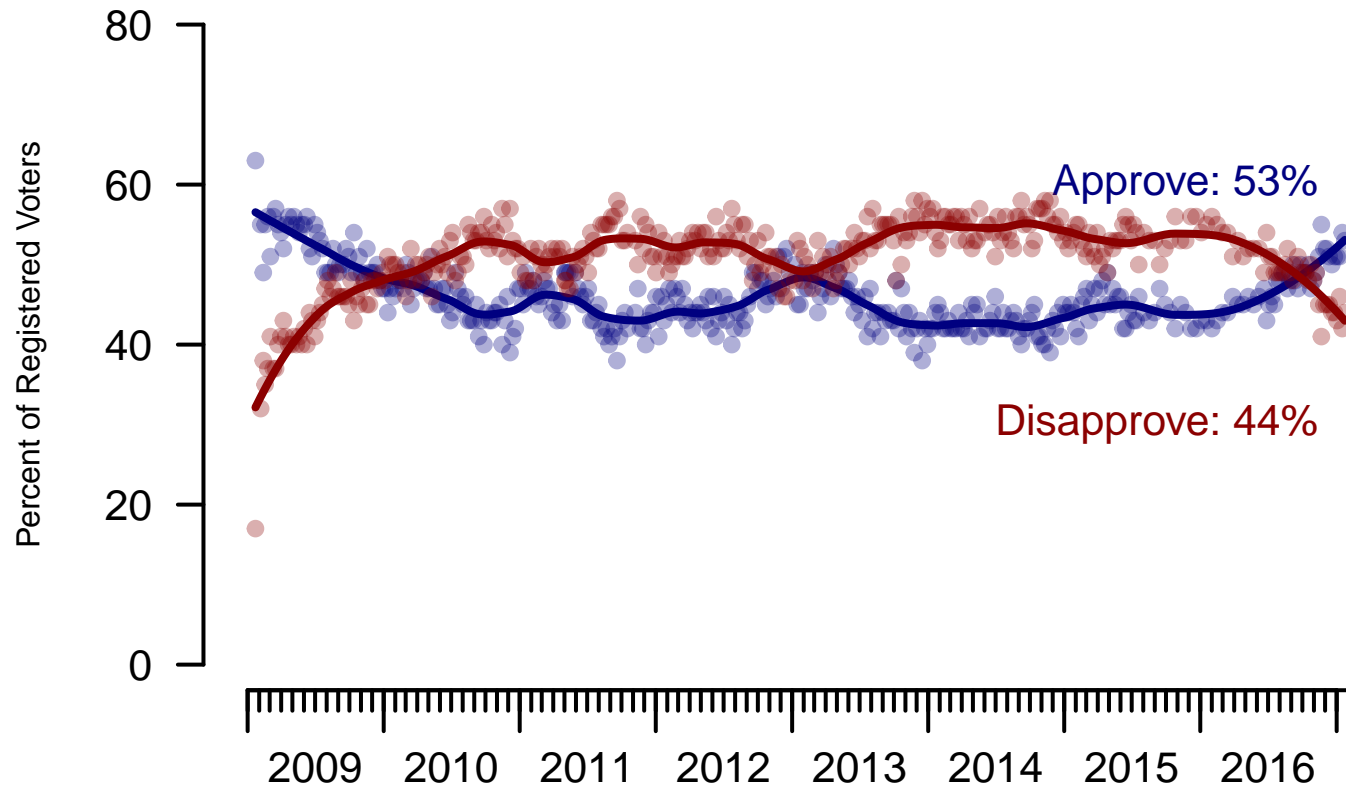


Figure 2: Obama Approval – Registered Voters

2. Approval of Obama as President – This Week – All Adults

Do you approve or disapprove of the way Barack Obama handled his job as President?

	Age (4 category)					Race			Census Region			
	Total	Under 30	30-44	45-64	65+	White	Black	Hispanic	North-east	Mid-west	South	West
Strongly Approve	27%	30%	27%	26%	27%	22%	56%	31%	27%	31%	25%	29%
Somewhat Approve	22%	28%	26%	22%	16%	22%	20%	29%	29%	20%	22%	20%
Somewhat Disapprove	13%	11%	11%	15%	12%	14%	6%	10%	11%	11%	14%	14%
Strongly Disapprove	30%	13%	24%	33%	44%	36%	5%	17%	27%	32%	32%	28%
Not Sure	7%	18%	12%	4%	0%	5%	13%	13%	6%	7%	7%	9%
Totals (Unweighted N)	100% (2,692)	100% (525)	100% (723)	100% (1,055)	100% (389)	100% (2,132)	100% (310)	100% (250)	100% (567)	100% (607)	100% (915)	100% (552)

	Party ID			Ideology			Gender		Family Income (3 category)			Prefer not to say	
	Total	Dem	Ind	Rep	Lib	Mod	Con	Male	Female	Under 50	50-100		100+
Strongly Approve	27%	62%	17%	4%	59%	23%	10%	21%	33%	27%	27%	32%	24%
Somewhat Approve	22%	28%	23%	14%	27%	30%	9%	24%	20%	24%	23%	17%	19%
Somewhat Disapprove	13%	4%	16%	19%	5%	15%	15%	12%	14%	14%	11%	14%	10%
Strongly Disapprove	30%	3%	31%	62%	5%	20%	64%	35%	26%	25%	36%	35%	35%
Not Sure	7%	3%	14%	1%	4%	12%	3%	8%	7%	9%	3%	2%	12%
Totals (Unweighted N)	100% (2,692)	100% (1,025)	100% (1,042)	100% (625)	100% (836)	100% (1,125)	100% (731)	100% (1,199)	100% (1,493)	100% (1,276)	100% (705)	100% (366)	100% (345)

3. Approval of U.S. Congress – Historical

Overall, do you approve or disapprove of the way that the United States Congress is handling its job?

	All Adults							
	Total Approve	Total Disapprove	Strongly Approve	Somewhat Approve	Neutral	Somewhat Disapprove	Strongly Disapprove	Not Sure
January 20-24, 2017	12%	51%	3%	9%	21%	20%	31%	16%
January 13-17, 2017	13%	55%	4%	9%	16%	21%	34%	15%
January 6-10, 2017	12%	56%	3%	9%	18%	22%	34%	15%
December 31, 2016 - January 2, 2017	15%	49%	3%	12%	19%	20%	29%	17%
December 24-26, 2016	12%	49%	3%	9%	22%	19%	30%	17%
December 17-19, 2016	11%	54%	3%	8%	20%	21%	33%	15%
December 10-12, 2016	12%	53%	2%	10%	19%	22%	31%	16%
December 3-5, 2016	14%	54%	4%	10%	17%	22%	32%	16%
November 26-28, 2016	15%	49%	4%	11%	21%	19%	30%	16%
November 19-21, 2016	15%	52%	4%	11%	19%	20%	32%	14%
One Year Ago	13%	57%	3%	10%	18%	21%	36%	12%

	Registered Voters							
	Total Approve	Total Disapprove	Strongly Approve	Somewhat Approve	Neutral	Somewhat Disapprove	Strongly Disapprove	Not Sure
January 20-24, 2017	12%	58%	3%	9%	20%	21%	37%	10%
January 13-17, 2017	14%	61%	4%	10%	14%	23%	38%	11%
January 6-10, 2017	12%	61%	3%	9%	17%	23%	38%	10%
December 31, 2016 - January 2, 2017	13%	55%	3%	10%	19%	21%	34%	13%
December 24-26, 2016	12%	56%	3%	9%	21%	21%	35%	11%
December 17-19, 2016	11%	59%	3%	8%	19%	23%	36%	10%
December 10-12, 2016	12%	59%	2%	10%	18%	23%	36%	11%
December 3-5, 2016	13%	65%	3%	10%	15%	25%	40%	8%
November 26-28, 2016	15%	57%	5%	10%	18%	22%	35%	10%
November 19-21, 2016	14%	61%	4%	10%	16%	22%	39%	9%
One Year Ago	12%	66%	3%	9%	14%	25%	41%	7%

Congress Approval

"Do you approve of the way the U.S. Congress is handling its job?"

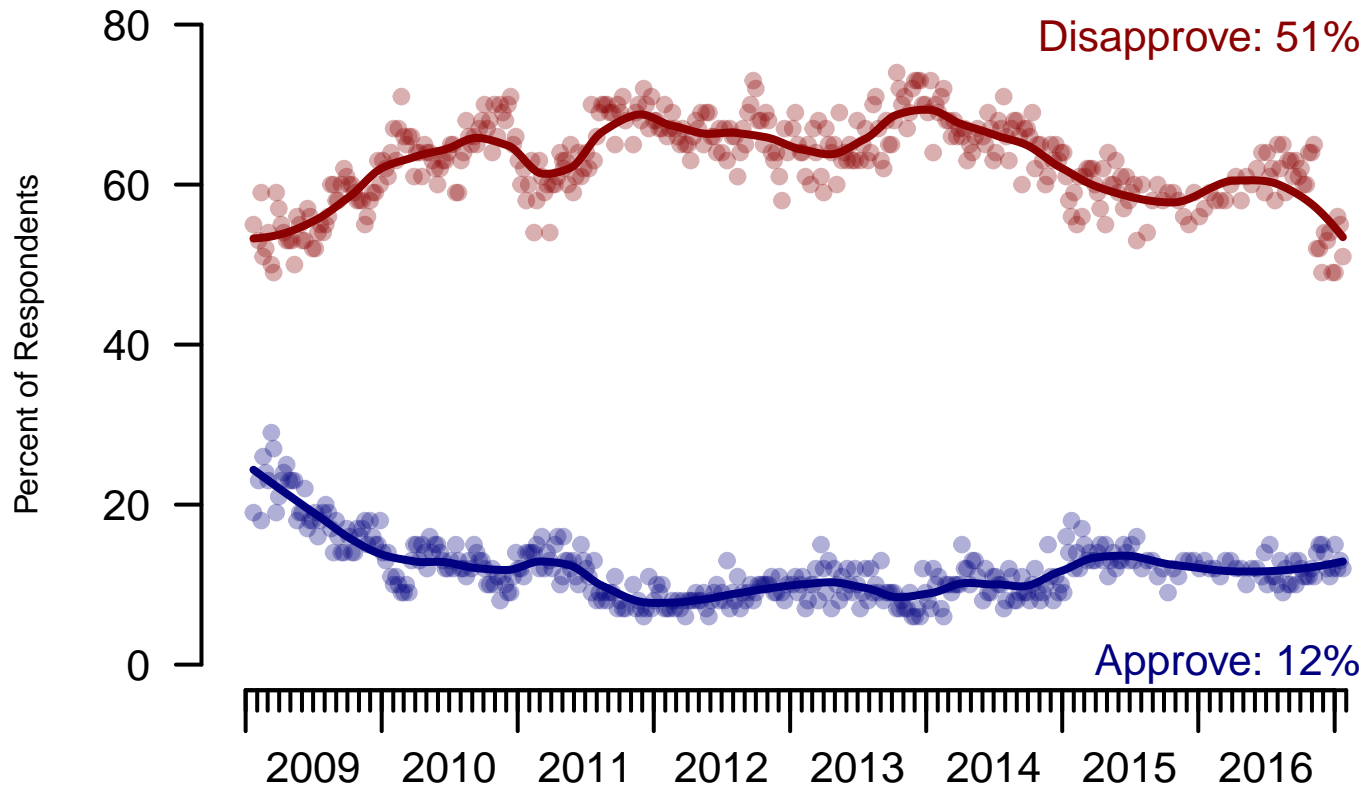


Figure 3: Congress Approval – All Adults

Congress Approval

"Do you approve of the way the
U.S. Congress is handling its job?"

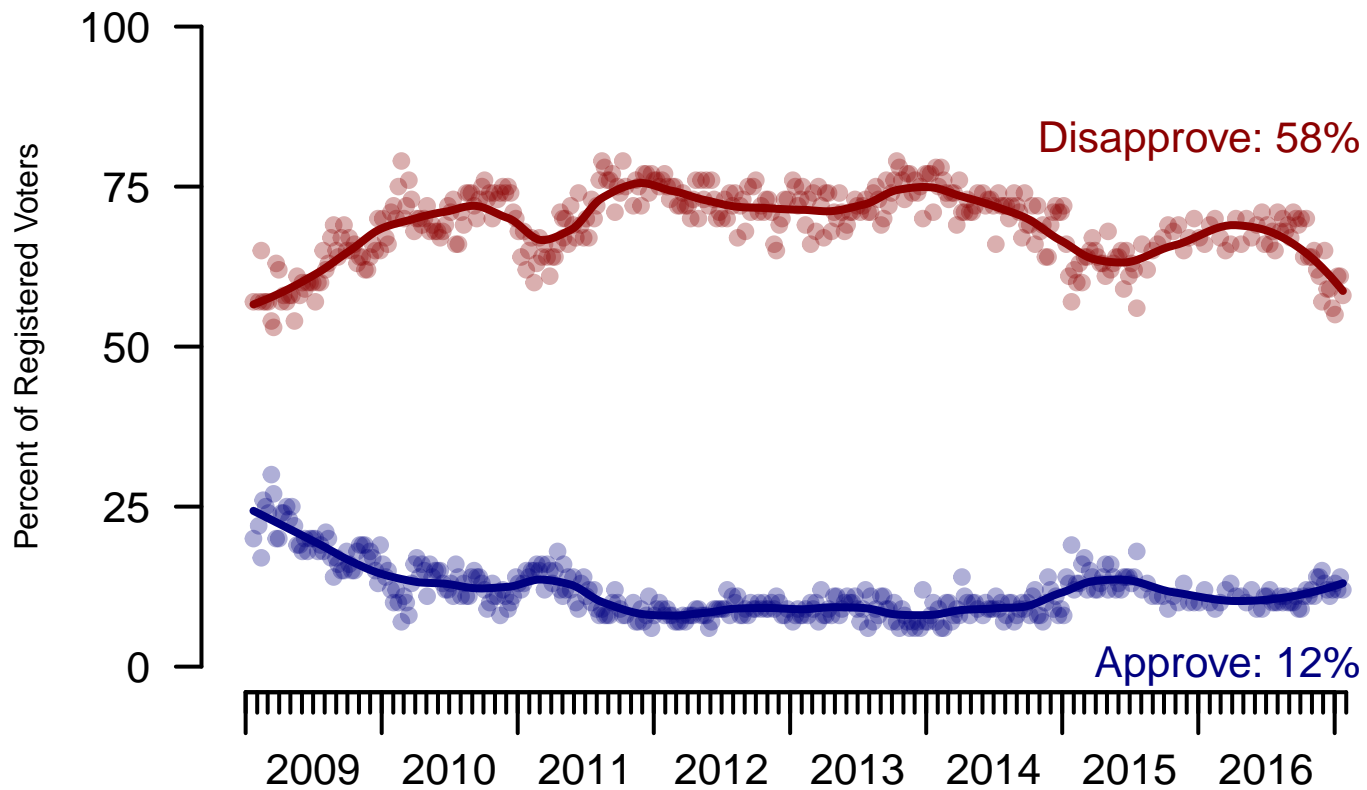


Figure 4: Congress Approval – Registered Voters

4. Approval of U.S. Congress – This Week – All Adults

Overall, do you approve or disapprove of the way that the United States Congress is handling its job?

	Age (4 category)					Race			Census Region			
	Total	Under 30	30-44	45-64	65+	White	Black	Hispanic	North-east	Mid-west	South	West
Strongly approve	3%	6%	5%	2%	1%	2%	5%	6%	4%	1%	3%	4%
Somewhat approve	9%	11%	10%	9%	8%	9%	10%	12%	11%	8%	9%	9%
Neither approve nor disapprove	21%	21%	22%	22%	19%	20%	20%	31%	25%	17%	22%	18%
Somewhat disapprove	20%	15%	21%	20%	22%	21%	14%	16%	18%	21%	20%	19%
Strongly disapprove	31%	21%	22%	34%	45%	34%	26%	19%	28%	35%	30%	37%
Not sure	16%	26%	21%	13%	6%	14%	25%	17%	15%	19%	15%	13%
Totals (Unweighted N)	100% (2,634)	100% (507)	100% (703)	100% (1,035)	100% (389)	100% (2,088)	100% (303)	100% (243)	100% (557)	100% (591)	100% (896)	100% (541)

	Party ID			Ideology			Gender		Family Income (3 category)				
	Total	Dem	Ind	Rep	Lib	Mod	Con	Male	Female	Under 50	50-100	100+	Prefer not to say
Strongly approve	3%	4%	3%	3%	4%	1%	5%	4%	2%	4%	3%	2%	1%
Somewhat approve	9%	9%	6%	14%	8%	7%	13%	10%	8%	10%	9%	10%	5%
Neither approve nor disapprove	21%	18%	20%	26%	14%	23%	24%	20%	21%	23%	22%	12%	19%
Somewhat disapprove	20%	15%	19%	27%	15%	18%	26%	20%	19%	18%	26%	23%	16%
Strongly disapprove	31%	42%	30%	21%	50%	27%	23%	34%	29%	27%	32%	46%	35%
Not sure	16%	11%	22%	10%	9%	24%	9%	12%	19%	18%	10%	7%	24%
Totals (Unweighted N)	100% (2,634)	100% (1,007)	100% (1,014)	100% (613)	100% (828)	100% (1,093)	100% (713)	100% (1,180)	100% (1,454)	100% (1,243)	100% (693)	100% (362)	100% (336)

5. Direction of country – Historical

Would you say things in this country today are...

	All Adults		
	Right Direction	Wrong Track	Not Sure
January 20-24, 2017	28%	53%	19%
January 13-17, 2017	24%	57%	19%
January 6-10, 2017	25%	58%	16%
December 31, 2016 - January 2, 2017	26%	57%	17%
December 24-26, 2016	25%	57%	17%
December 17-19, 2016	24%	59%	17%
December 10-12, 2016	27%	56%	17%
December 3-5, 2016	26%	56%	18%
November 26-28, 2016	25%	58%	18%
November 19-21, 2016	25%	57%	18%
One Year Ago	25%	65%	10%

	Registered Voters		
	Right Direction	Wrong Track	Not Sure
January 20-24, 2017	29%	55%	16%
January 13-17, 2017	23%	61%	15%
January 6-10, 2017	25%	60%	15%
December 31, 2016 - January 2, 2017	26%	60%	14%
December 24-26, 2016	25%	62%	13%
December 17-19, 2016	24%	61%	14%
December 10-12, 2016	27%	59%	14%
December 3-5, 2016	26%	61%	13%
November 26-28, 2016	25%	61%	14%
November 19-21, 2016	24%	60%	16%
One Year Ago	28%	65%	7%

Direction of Country

"Would you say things in this country today are generally headed in the right direction or off on the wrong track?"

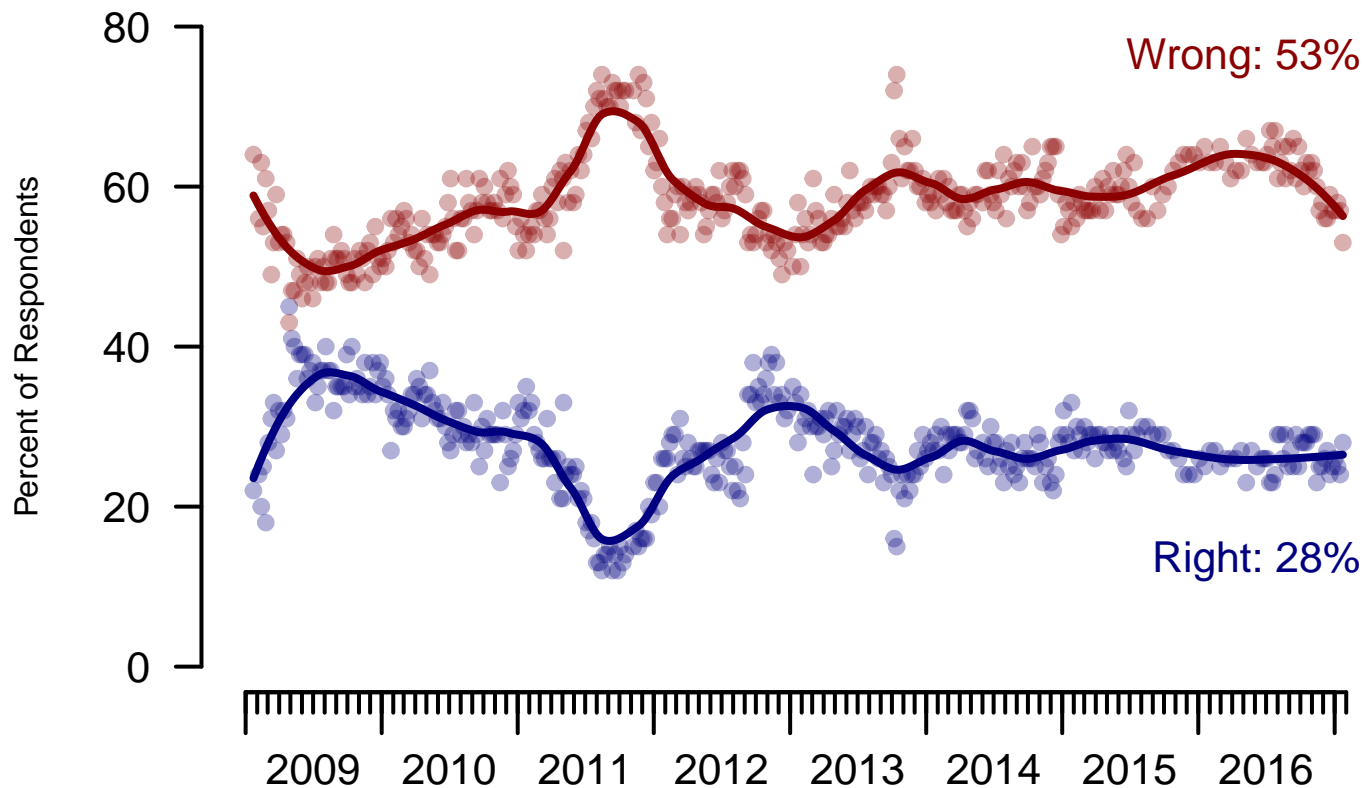


Figure 5: Direction of Country – All Adults

Direction of Country

"Would you say things in this country today are generally headed in the right direction or off on the wrong track?"

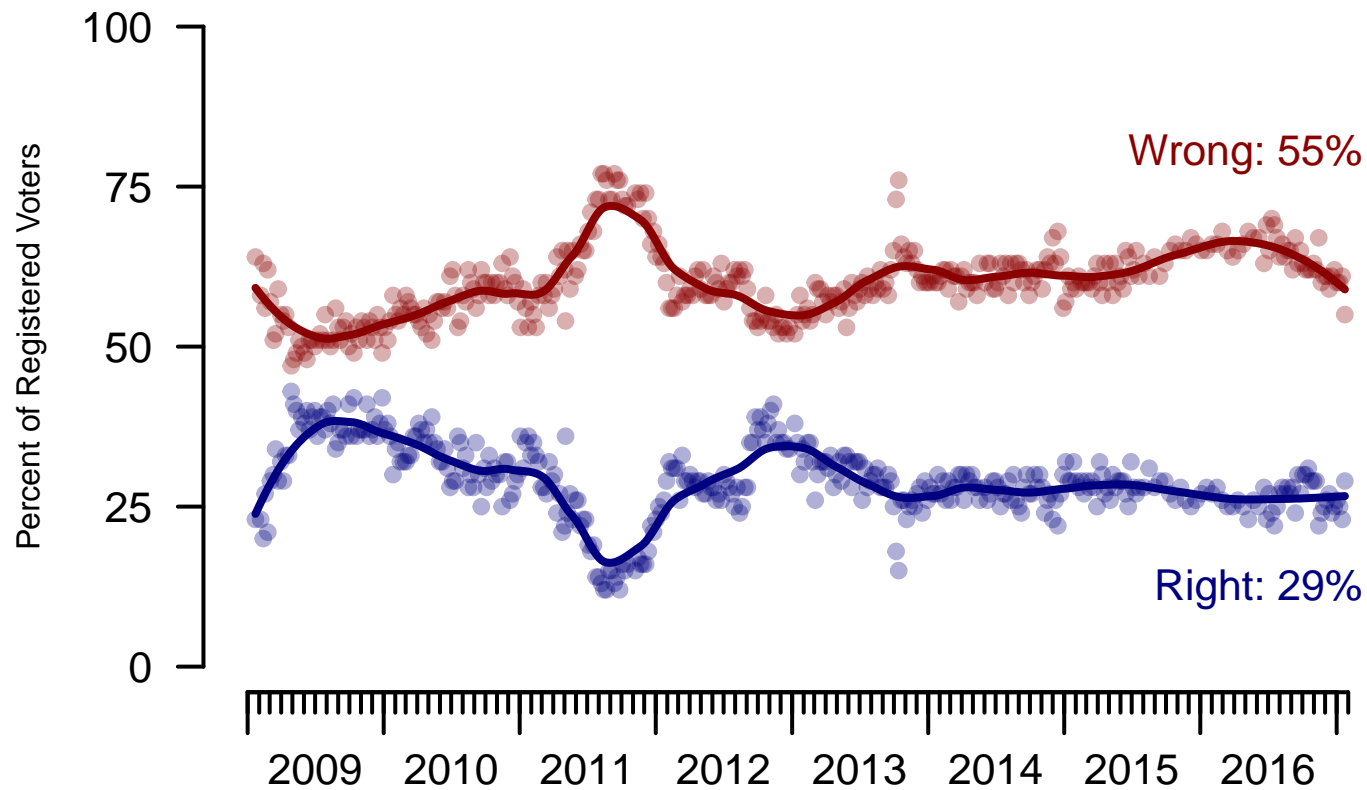


Figure 6: Direction of Country – Registered Voters

6. Direction of Country – This Week – All Adults

Would you say things in this country today are...

	Age (4 category)					Race			Census Region			
	Total	Under 30	30-44	45-64	65+	White	Black	Hispanic	North-east	Mid-west	South	West
Generally headed in the right direction	28%	19%	25%	27%	38%	31%	13%	24%	26%	24%	30%	29%
Off on the wrong track	53%	54%	53%	56%	47%	52%	62%	50%	51%	57%	54%	52%
Not sure	19%	27%	21%	17%	15%	17%	24%	26%	23%	19%	17%	19%
Totals (Unweighted N)	100% (2,692)	100% (525)	100% (723)	100% (1,055)	100% (389)	100% (2,132)	100% (310)	100% (250)	100% (567)	100% (607)	100% (915)	100% (552)

	Party ID			Ideology			Gender		Family Income (3 category)				
	Total	Dem	Ind	Rep	Lib	Mod	Con	Male	Female	Under 50	50-100	100+	Prefer not to say
Generally headed in the right direction	28%	13%	23%	52%	14%	21%	48%	31%	24%	29%	28%	29%	21%
Off on the wrong track	53%	72%	50%	36%	73%	53%	39%	50%	56%	52%	54%	58%	50%
Not sure	19%	16%	27%	11%	13%	27%	13%	19%	20%	19%	17%	14%	29%
Totals (Unweighted N)	100% (2,692)	100% (1,025)	100% (1,042)	100% (625)	100% (836)	100% (1,125)	100% (731)	100% (1,199)	100% (1,493)	100% (1,276)	100% (705)	100% (366)	100% (345)

The Economist/YouGov Poll
January 23 - 25, 2017



Sponsorship	<i>The Economist</i>
Fieldwork	YouGov
Interviewing Dates	January 23 - 25, 2017
Target population	U.S. citizens, aged 18 and over.
Sampling method	Respondents were selected from YouGov's opt-in Internet panel using sample matching. A random sample (stratified by age, gender, race, education, and region) was selected from the 2014 American Community Study. Voter registration was imputed from the November 2014 Current Population Survey Registration and Voting Supplement.
Weighting	The sample was weighted based on age, gender, race, education, and 2016 Presidential vote. The weights range from 0.09 to 4.7, with a mean of one and a standard deviation of 0.7.
Number of respondents	2692
Margin of error	± 2.3% (adjusted for weighting)
Margin of error (Registered Voters)	± 2.6% (adjusted for weighting)
Survey mode	Web-based interviews
Full results	Available online at http://today.yougov.com/news/categories/economist/ .