

MRP Methodology, Tables and Figures

Prepared for YouGov on 10 December 2019 by

- Benjamin Lauderdale (University College London)
- Jack Blumenau (University College London)

This report summarises the current electoral situation in the United Kingdom in advance of the general election that is due to be held on 12 December 2019. The estimates provided here are based on updated versions of the modelling techniques that we used in the YouGov 2017 UK General Election Model, which correctly predicted the hung parliament and 93% of individual seats. This approach allows us to not just calculate national vote shares, but also to use demographic, geographic and political patterns in support for different parties across the UK to assess their relative performance in each parliamentary constituency.

Contents

METHODS	4
Data Collection	4
Model	4
Turnout Assumptions	5
Survey Questions	5
Uncertainty	5
THE CURRENT ELECTORAL SITUATION	7
National Vote and Seat Estimates	7
Seat Gains/Losses by Party	11
Interval Estimates	11
DEMOGRAPHIC VOTE TABLES	12
Vote by 2017 vote	12
Vote by 2017 vote (Scotland)	13
Vote by 2017 vote (Wales)	13
Vote by 2016 EU referendum vote	14
Vote by 2016 x 2017 vote	15
Vote by 2019 EU parliament election vote	17
Vote by age	18
Vote by gender	19
Vote by qualifications	19
Vote by (self-reported) attention to politics	20
Vote by ethnicity	21
Vote by marital status	21
Vote by region	22
CONSTITUENCY ESTIMATES	23
SEAT GAINS/LOSSES	38
Conservative gains/losses	38
Labour gains/losses	42
Liberal Democrat gains/losses	45
Scottish National Party gains/losses	46
Brexit Party gains/losses	47
Plaid Cymru gains/losses	47
FIGURES	48
Constituency Vote Share by 2017 Constituency Vote Share	48
Constituency Vote Share by 2015 Constituency Vote Share	48
Constituency Vote Share by 2010 Constituency Vote Share	49
Vote by age and 2017 vote	50
Vote by referendum vote and 2017 vote	51
Vote by qualifications and 2017 vote	52

THE CAMPAIGN	53
Estimated Vote Shares by Date	53
Estimated Seats by Date	54

METHODS

Data Collection

A sample of 14838 politically and demographically representative respondents was taken covering the entire UK (excluding Northern Ireland). An additional top-up sample of 90774 respondents was taken from across the YouGov panel. All the analyses below use both samples combined, but adjusting the latter data to match the national levels of the former. The period of data collection used in this report was 2019-12-04 to 2019-12-10. We have an average of 167 observations for the average constituency.

Model

There are not enough observations in individual constituencies to treat the data as separate constituency polls, but we can look for patterns in responses across constituencies that have similar characteristics, and then work out the implications of those patterns for each constituency. This strategy of “multilevel regression and post-stratification” or *MRP* is the same approach we used in the 2017 YouGov election model that correctly predicted the hung parliament and 93% of individual constituency winners.

Our modelling approach proceeds in two steps. First, we build a detailed description of which kinds of people live where in the UK. This “population model” tells us how many people we think voted in different ways in recent elections, are of each age, gender, level of educational qualifications, etc, and all the combinations of these, in each UK parliamentary constituency. The population model is constructed from a number of sources, including past election results, a variety of types of survey data and UK census data.

Second, we use the YouGov survey data described above to build a *survey response model* of current voting intention (or of responses to any of the questions listed below). This is a model of how voting intention is associated with the individual level characteristics that are in our description of the population plus characteristics of parliamentary constituencies. The survey data might indicate that people with different educational qualifications are giving different patterns of responses, or that different parts of the UK are giving different responses, or other similar patterns. The model describes all of these patterns, and allows us to make predictions about how individuals with any combination of characteristics would respond to the survey question.

Once we have these two things, we can systematically go through all the types of people that our population model says exist and use the survey response model to predict vote intention (or any other survey measure) for individuals of each type. For example, our population model tells us that there are some number of women who are 31-35 year-old, with a university degree, who voted Remain in 2016 and Liberal Democrat in 2017, and who live in the Twickenham constituency in London. Our survey response model then gives us a prediction of their survey response (whether vote intention or something else). We can then tally up these predictions for all the individuals that our population model says exist in the UK population, which gives us an estimate for the UK as a whole. Alternatively, we can tally up those predictions for each constituency separately, yielding estimates for every constituency, or by any other characteristic that we have used in the population model (age, gender, qualifications, etc). The survey response model captures the demographic patterns in how people are responding, and then this “post-stratification” step works out the implications given the variable demographic composition of different places (or groups) in the UK.

The models we have developed for this project look for patterns as a function of a number of variables, including individual 2017 vote, referendum vote, sex, age, qualifications, housing tenure, marital status and ethnicity. At the level of constituencies, we look for patterns as a function of the electoral history of the constituency, EU referendum vote, region/country, and several other variables. We also use interactions of these that ensure we are sensitive to local political context. For example, at the 2017 election, young Remain-voting 2015 Conservative voters were more likely to defect to Labour in seats where Labour was stronger and to the Liberal Democrats in seats where the Liberal Democrats were stronger.

Turnout Assumptions

In contrast to traditional polling approaches, we do not rely on respondents' self-reported likelihood of voting when working out probable voting patterns across different constituencies. Instead, we build a model based on data from past elections to predict whether different types of individual would be likely to vote in a new election. The result of this process is that we assume that the electorate for a new election would be demographically similar to the electorates of 2015 and 2017 (which were themselves similar, despite 2017 claims about a "youthquake"). This is the same strategy we used for the 2017 election model. It is not perfect, as it is possible that there will be changes to the demographic make-up of the electorate, but is also unlikely to yield large errors overall.

Survey Questions

The question polled was:

There will be a UK general election on 12 December 2019. The candidates that will stand in your constituency, <CONSTITUENCY NAME>, are not yet known for certain. You may face a choice between the following parties and candidates.

Given these parties and candidates, how do you intend to vote in the upcoming election?

1. Conservative – <CANDIDATE NAME>
2. Labour – <CANDIDATE NAME>
3. Liberal Democrat – <CANDIDATE NAME>
4. Brexit Party – <CANDIDATE NAME>
5. Scottish National Party (SNP) – <CANDIDATE NAME>
6. Plaid Cymru – <CANDIDATE NAME>
7. Green – <CANDIDATE NAME>
8. Independent – <CANDIDATE NAME>
9. Other
10. Will Not vote
11. Don't know

Parties are not listed where they are not standing candidates. The "Other" option was only listed where there were additional candidates not already listed. Only high profile independent candidates were listed. These include all current MPs standing as independents as well as selected others like Claire Wright in East Devon and Jason Zadrozny in Ashfield.

Uncertainty

We do not report explicit intervals of uncertainty around all of the estimates that we provide below because it makes the tables extremely cumbersome to read. It is also important to note that we can only quantify some of the uncertainty that a reader *ought* to have about what the results tell us about what voters actually would do in an electoral situation that resembles that described by the question. The traditional statistical margin of error only includes uncertainty that results from having a limited sample of a population. We provide this for some of the estimates that most closely resemble the current electoral situation. However, as explained above, the estimates presented below are based on multiple models (a population model, a survey response model, a turnout model), and it is very difficult to fully quantify the potential sources of uncertainty that arise in all of these models.

We do not expect to get every seat right, there are too many seats that are very close between two (or more) parties. Given the stated level of uncertainty in our estimates, our best guess is that we will predict 93% of individual seats correctly, with a most likely range of 91% to 95%. Any variation in that range can be ascribed to luck in how individual marginal seats

fall relative to our predictions. If we do worse than that range, it would mean that we were not merely unlucky, but that there were more serious biases in our modelling. If we do better than that range, it would mean that we were not merely lucky, but also underconfident in the quality of our modelling.

THE CURRENT ELECTORAL SITUATION

National Vote and Seat Estimates

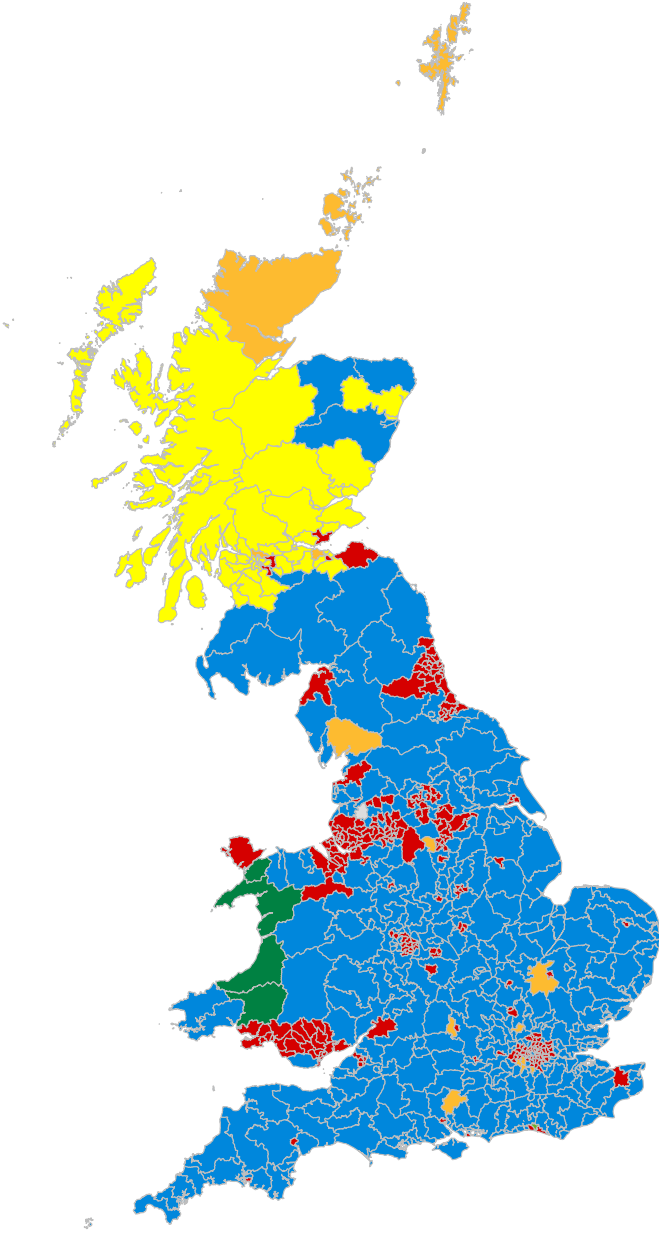
Table 1: Current estimated seat counts

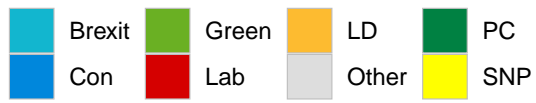
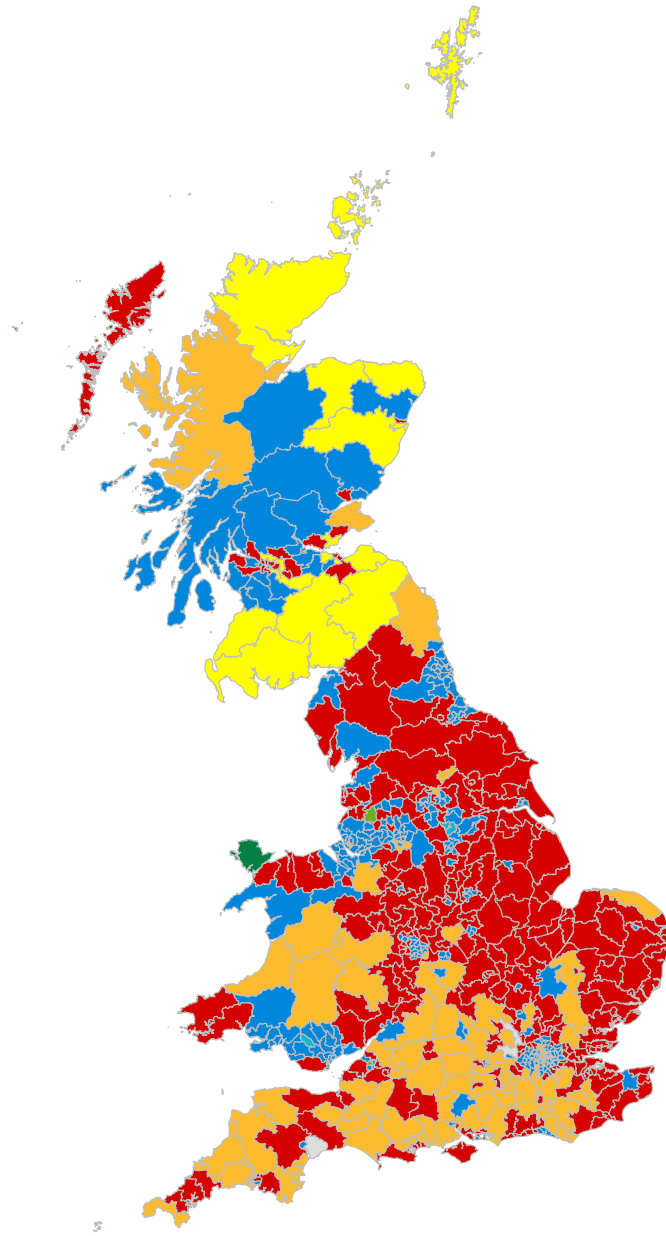
	2017 Result	Estimate	Interval
Con	317	339	[311 - 367]
Lab	262	231	[206 - 256]
LD	12	15	[11 - 22]
Brexit	0	0	[0 - 1]
Green	1	1	[1 - 1]
SNP	35	41	[24 - 55]
PC	4	4	[2 - 5]
Other	1	1	[1 - 2]

Table 2: Current estimated vote shares

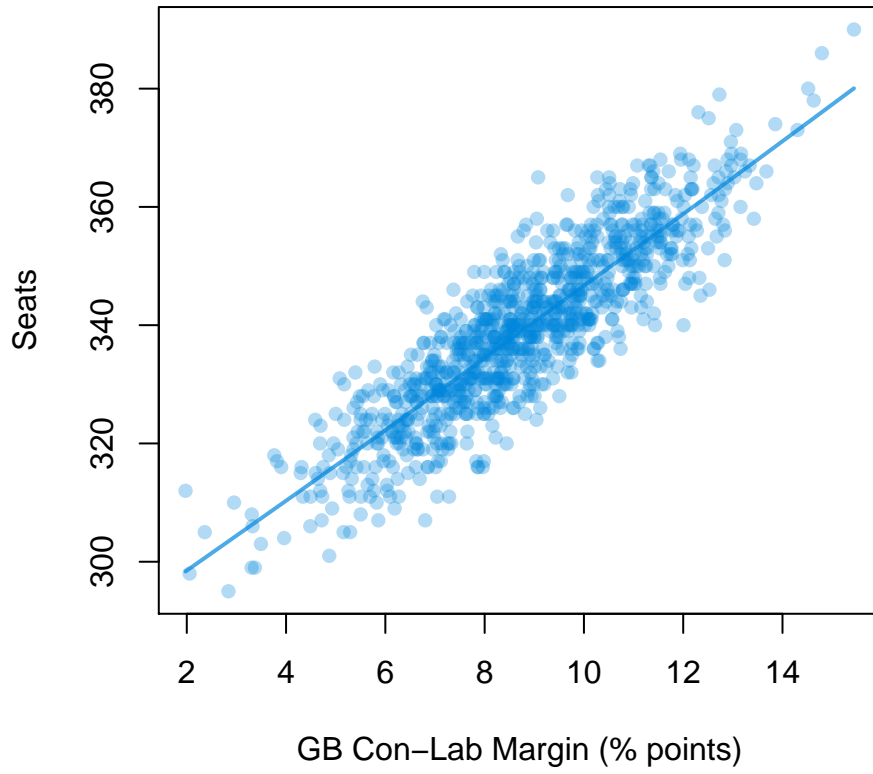
	2017 Result	Estimate	Interval
Con	43.4	42.6	[39.9 - 45.2]
Lab	41.0	33.8	[31.2 - 36.4]
LD	7.6	12.4	[10.5 - 14.3]
Brexit	1.9	2.9	[2.0 - 3.9]
Green	1.7	2.8	[2.0 - 3.8]
SNP	3.1	3.4	[2.5 - 4.5]
PC	0.5	0.5	[0.2 - 1.0]
Other	0.8	1.6	[1.0 - 2.3]

The maps below show the predicted winning party (left) and runner up (right) for each constituency:





Con



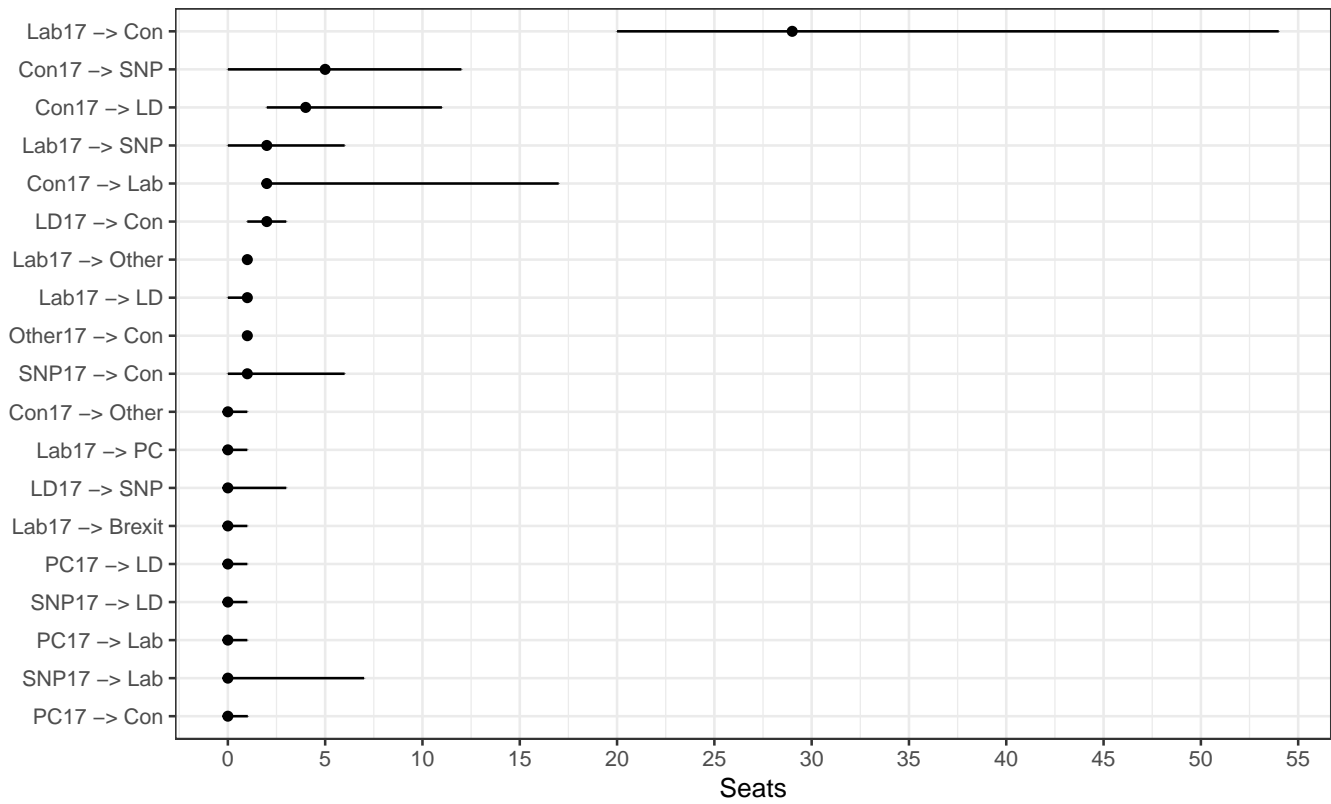
The plot above shows the “seats-votes” curves for Conservative seats given the Conservative - Labour national vote margin.

Seat Gains/Losses by Party

Table 3: Current seats (column) by 2017 seats (row)

	Con	Lab	LD	Brexit	Green	SNP	PC	Other
Con17	306	2	4	0	0	5	0	0
Lab17	29	229	1	0	0	2	0	1
LD17	2	0	10	0	0	0	0	0
UKIP17	0	0	0	0	0	0	0	0
Green17	0	0	0	0	1	0	0	0
SNP17	1	0	0	0	0	34	0	0
PC17	0	0	0	0	0	0	4	0
Other17	1	0	0	0	0	0	0	0

Interval Estimates



DEMOGRAPHIC VOTE TABLES

The following tables provide current vote intention by various demographic variables.

Vote by 2017 vote

Table 4: Current vote (column) by 2017 vote (row), row percentages.

	Con	Lab	LD	Brexit	Green	SNP	PC	Other	Turnout	Fraction
Con 17	83	4	8	3	1	0	0	1	92	39
Lab 17	10	74	8	2	3	1	0	1	88	35
LD 17	13	18	63	1	4	1	0	1	92	7
UKIP 17	62	7	3	22	1	0	0	5	94	2
Green 17	18	27	15	2	35	0	0	3	89	1
SNP 17	4	5	1	0	1	89	0	0	89	3
PC 17	17	13	4	9	1	0	54	1	92	0
Other 17	33	21	13	7	5	1	0	19	83	1
None 17	40	32	13	5	4	4	1	2	25	11
Ineligible 17	21	53	13	2	6	3	0	2	52	2

Table 5: Current vote (column) by 2017 vote (row), proportions of all projected voters.

	Con	Lab	LD	Brexit	Green	SNP	PC	Other	Total
Con 17	31.7	1.6	3.2	1.0	0.5	0.1	0.0	0.4	38.5
Lab 17	3.6	25.6	3.0	0.8	0.9	0.4	0.1	0.5	34.8
LD 17	0.9	1.2	4.2	0.1	0.3	0.1	0.0	0.1	6.7
UKIP 17	1.0	0.1	0.0	0.4	0.0	0.0	0.0	0.1	1.7
Green 17	0.2	0.4	0.2	0.0	0.5	0.0	0.0	0.0	1.4
SNP 17	0.1	0.1	0.0	0.0	0.0	2.4	0.0	0.0	2.7
PC 17	0.1	0.1	0.0	0.0	0.0	0.0	0.2	0.0	0.5
Other 17	0.2	0.1	0.1	0.0	0.0	0.0	0.0	0.1	0.5
None 17	4.3	3.4	1.4	0.5	0.4	0.4	0.1	0.3	10.8
Ineligible 17	0.5	1.3	0.3	0.0	0.1	0.1	0.0	0.0	2.5
Total	42.6	33.9	12.3	2.9	2.8	3.4	0.5	1.6	100.0

Vote by 2017 vote (Scotland)

Table 6: Current vote (column) by 2017 vote (row), row percentages.

	Con	Lab	LD	Brexit	Green	SNP	PC	Other	Turnout	Fraction
Con 17	79	6	10	1	0	4	0	0	92	25
Lab 17	10	58	9	1	1	21	0	1	85	22
LD 17	11	11	62	0	2	13	0	0	88	6
UKIP 17	68	12	5	10	0	2	0	2	96	0
Green 17	9	22	7	1	29	31	0	1	74	0
SNP 17	4	5	1	0	1	89	0	0	89	32
PC 17	NA	NA	NA	NA	NA	NA	NA	NA	NA	NA
Other 17	28	18	7	5	3	37	0	3	95	0
None 17	23	21	11	1	1	42	0	1	24	12
Ineligible 17	19	29	12	1	3	36	0	1	52	2

Vote by 2017 vote (Wales)

Table 7: Current vote (column) by 2017 vote (row), row percentages.

	Con	Lab	LD	Brexit	Green	SNP	PC	Other	Turnout	Fraction
Con 17	80	5	4	7	1	0	3	1	94	30
Lab 17	8	79	3	4	1	0	5	1	88	42
LD 17	15	26	45	2	2	0	8	1	93	4
UKIP 17	44	7	1	43	1	0	1	2	96	2
Green 17	12	41	14	3	18	0	10	2	85	0
SNP 17	NA	NA	NA	NA	NA	NA	NA	NA	NA	NA
PC 17	17	13	4	9	1	0	54	1	92	9
Other 17	50	25	3	17	4	0	0	1	89	0
None 17	31	40	6	9	2	0	11	1	24	10
Ineligible 17	17	62	6	3	2	0	8	1	52	3

Vote by 2016 EU referendum vote

Table 8: Current vote (column) by EU vote (row), row percentages.

	Con	Lab	LD	Brexit	Green	SNP	PC	Other	Turnout	Fraction
Leave 16	66	20	4	5	2	2	0	2	90	46
Remain 16	22	46	21	0	3	5	1	1	93	44
Did not vote 16	30	46	12	2	3	5	0	2	15	6
Ineligible 16	23	54	12	1	5	3	0	1	54	4

Table 9: Current vote (column) by 2016 vote (row), proportions of all projected voters.

	Con	Lab	LD	Brexit	Green	SNP	PC	Other	Total
Leave 16	30.3	9.0	1.7	2.6	1.0	0.7	0.1	0.9	46.3
Remain 16	9.8	20.2	9.5	0.2	1.5	2.3	0.3	0.5	44.3
Did not vote 16	1.7	2.6	0.7	0.1	0.2	0.3	0.0	0.1	5.7
Ineligible 16	0.8	2.0	0.5	0.1	0.2	0.1	0.0	0.1	3.7
Total	42.6	33.9	12.3	2.9	2.8	3.4	0.5	1.6	100.0

Vote by 2016 x 2017 vote

Table 10: Current vote (column) by 2016 and 2017 vote combinations (row), row proportions.

	Con	Lab	LD	Brexit	Green	SNP	PC	Other	Fraction
Leave 16 - Con 17	90	2	2	4	1	0	0	1	25
Leave 16 - Lab 17	23	61	4	6	3	1	0	2	11
Leave 16 - LD 17	44	13	29	4	6	1	0	3	1
Leave 16 - UKIP 17	62	7	2	23	1	0	0	5	2
Leave 16 - Green 17	32	20	8	5	31	0	0	4	1
Leave 16 - SNP 17	12	7	1	1	2	76	0	0	1
Leave 16 - PC 17	33	10	2	21	1	0	32	1	0
Leave 16 - Other 17	45	13	4	14	5	1	0	18	0
Leave 16 - None 17	57	21	5	8	3	2	0	3	5
Leave 16 - Ineligible 17	0	0	0	0	0	0	0	0	0
Remain 16 - Con 17	66	8	21	1	2	1	0	1	12
Remain 16 - Lab 17	3	80	11	0	3	1	0	1	21
Remain 16 - LD 17	5	19	71	0	3	1	0	1	5
Remain 16 - UKIP 17	45	22	18	7	4	0	0	5	0
Remain 16 - Green 17	6	32	21	0	38	0	0	2	1
Remain 16 - SNP 17	1	4	1	0	1	93	0	0	2
Remain 16 - PC 17	5	15	6	1	1	0	70	1	0
Remain 16 - Other 17	20	27	24	2	6	2	0	21	0
Remain 16 - None 17	20	41	24	1	5	7	1	2	3
Remain 16 - Ineligible 17	0	0	0	0	0	0	0	0	0
Did not vote 16 - Con 17	78	7	10	2	2	0	0	1	1
Did not vote 16 - Lab 17	8	79	7	1	2	2	0	1	2
Did not vote 16 - LD 17	16	20	54	1	4	3	0	2	0
Did not vote 16 - UKIP 17	45	23	10	15	2	0	0	5	0
Did not vote 16 - Green 17	16	35	16	2	27	1	0	3	0
Did not vote 16 - SNP 17	3	6	1	0	1	88	0	0	0
Did not vote 16 - PC 17	15	25	6	4	1	0	47	1	0
Did not vote 16 - Other 17	28	31	14	5	6	0	0	16	0
Did not vote 16 - None 17	30	40	15	3	4	4	0	3	2
Did not vote 16 - Ineligible 17	0	0	0	0	0	0	0	0	0
Ineligible 16 - Con 17	72	12	11	1	2	1	1	1	0
Ineligible 16 - Lab 17	7	81	6	1	2	1	0	1	1
Ineligible 16 - LD 17	12	25	53	0	5	3	0	1	0
Ineligible 16 - UKIP 17	47	30	7	10	3	0	0	3	0
Ineligible 16 - Green 17	11	41	14	1	32	0	0	1	0
Ineligible 16 - SNP 17	2	4	1	0	1	92	0	0	0
Ineligible 16 - PC 17	4	43	8	0	0	0	45	1	0
Ineligible 16 - Other 17	28	34	9	2	8	1	0	17	0
Ineligible 16 - None 17	24	54	10	1	4	5	1	1	0
Ineligible 16 - Ineligible 17	21	53	13	2	6	3	0	2	2

Table 11: Current vote (column) by 2016 and 2017 vote combinations (row), proportions of all projected voters.

	Con	Lab	LD	Brexit	Green	SNP	PC	Other	Fraction
Leave 16 - Con 17	22.6	0.6	0.5	0.9	0.2	0.0	0.0	0.3	25.1
Leave 16 - Lab 17	2.6	6.9	0.4	0.7	0.3	0.1	0.0	0.3	11.3
Leave 16 - LD 17	0.5	0.2	0.4	0.0	0.1	0.0	0.0	0.0	1.2
Leave 16 - UKIP 17	1.0	0.1	0.0	0.4	0.0	0.0	0.0	0.1	1.6
Leave 16 - Green 17	0.2	0.1	0.0	0.0	0.2	0.0	0.0	0.0	0.6
Leave 16 - SNP 17	0.1	0.1	0.0	0.0	0.0	0.5	0.0	0.0	0.7
Leave 16 - PC 17	0.1	0.0	0.0	0.0	0.0	0.0	0.1	0.0	0.2
Leave 16 - Other 17	0.1	0.0	0.0	0.0	0.0	0.0	0.0	0.0	0.2
Leave 16 - None 17	3.1	1.1	0.3	0.4	0.2	0.1	0.0	0.2	5.3
Leave 16 - Ineligible 17	0.0	0.0	0.0	0.0	0.0	0.0	0.0	0.0	0.0
Remain 16 - Con 17	8.0	0.9	2.5	0.1	0.3	0.1	0.0	0.2	12.0
Remain 16 - Lab 17	0.7	16.5	2.3	0.1	0.6	0.3	0.1	0.2	20.8
Remain 16 - LD 17	0.3	1.0	3.6	0.0	0.2	0.0	0.0	0.1	5.1
Remain 16 - UKIP 17	0.0	0.0	0.0	0.0	0.0	0.0	0.0	0.0	0.1
Remain 16 - Green 17	0.0	0.2	0.2	0.0	0.3	0.0	0.0	0.0	0.7
Remain 16 - SNP 17	0.0	0.1	0.0	0.0	0.0	1.6	0.0	0.0	1.8
Remain 16 - PC 17	0.0	0.0	0.0	0.0	0.0	0.0	0.2	0.0	0.3
Remain 16 - Other 17	0.0	0.1	0.0	0.0	0.0	0.0	0.0	0.0	0.2
Remain 16 - None 17	0.7	1.4	0.8	0.0	0.2	0.2	0.0	0.1	3.3
Remain 16 - Ineligible 17	0.0	0.0	0.0	0.0	0.0	0.0	0.0	0.0	0.0
Did not vote 16 - Con 17	0.9	0.1	0.1	0.0	0.0	0.0	0.0	0.0	1.1
Did not vote 16 - Lab 17	0.2	1.7	0.2	0.0	0.0	0.0	0.0	0.0	2.2
Did not vote 16 - LD 17	0.0	0.1	0.1	0.0	0.0	0.0	0.0	0.0	0.3
Did not vote 16 - UKIP 17	0.0	0.0	0.0	0.0	0.0	0.0	0.0	0.0	0.0
Did not vote 16 - Green 17	0.0	0.0	0.0	0.0	0.0	0.0	0.0	0.0	0.1
Did not vote 16 - SNP 17	0.0	0.0	0.0	0.0	0.0	0.2	0.0	0.0	0.2
Did not vote 16 - PC 17	0.0	0.0	0.0	0.0	0.0	0.0	0.0	0.0	0.0
Did not vote 16 - Other 17	0.0	0.0	0.0	0.0	0.0	0.0	0.0	0.0	0.1
Did not vote 16 - None 17	0.5	0.7	0.3	0.1	0.1	0.1	0.0	0.0	1.7
Did not vote 16 - Ineligible 17	0.0	0.0	0.0	0.0	0.0	0.0	0.0	0.0	0.0
Ineligible 16 - Con 17	0.2	0.0	0.0	0.0	0.0	0.0	0.0	0.0	0.2
Ineligible 16 - Lab 17	0.0	0.4	0.0	0.0	0.0	0.0	0.0	0.0	0.5
Ineligible 16 - LD 17	0.0	0.0	0.0	0.0	0.0	0.0	0.0	0.0	0.1
Ineligible 16 - UKIP 17	0.0	0.0	0.0	0.0	0.0	0.0	0.0	0.0	0.0
Ineligible 16 - Green 17	0.0	0.0	0.0	0.0	0.0	0.0	0.0	0.0	0.0
Ineligible 16 - SNP 17	0.0	0.0	0.0	0.0	0.0	0.0	0.0	0.0	0.0
Ineligible 16 - PC 17	0.0	0.0	0.0	0.0	0.0	0.0	0.0	0.0	0.0
Ineligible 16 - Other 17	0.0	0.0	0.0	0.0	0.0	0.0	0.0	0.0	0.0
Ineligible 16 - None 17	0.1	0.2	0.0	0.0	0.0	0.0	0.0	0.0	0.4
Ineligible 16 - Ineligible 17	0.5	1.3	0.3	0.0	0.1	0.1	0.0	0.0	2.5

Vote by 2019 EU parliament election vote

Table 12: Current vote (column) by EP vote (row), row percentages.

	Con	Lab	LD	Brexit	Green	SNP	PC	Other	Turnout	Fraction
Con 19	89	4	5	0	1	0	0	1	92	5
Lab 19	2	93	3	0	1	1	0	1	90	7
LD 19	9	40	46	0	2	1	0	1	90	10
Brexit 19	82	5	1	8	1	0	0	2	93	16
Green 19	7	57	17	0	13	3	0	1	90	6
SNP 19	1	5	1	0	0	93	0	0	89	2
PC 19	5	48	4	0	0	0	42	0	84	0
Other 19	50	24	11	7	3	0	0	4	83	4
None 19	44	35	11	2	3	3	0	2	57	51

Table 13: Current vote (column) by EP turnout (row), row percentages.

	Con	Lab	LD	Brexit	Green	SNP	PC	Other	Turnout	Fraction
Voted 19	42	33	14	3	3	4	1	1	91	49
Did not vote 19	44	35	11	2	3	3	0	2	57	51

Vote by age

Table 14: Current vote (column) by age (row), row percentages.

	Con	Lab	LD	Brexit	Green	SNP	PC	Other	Turnout	Fraction
18-25	22	55	11	2	4	4	0	1	52	8
25-30	26	52	12	2	4	4	0	1	52	6
30-35	30	46	13	2	3	4	0	1	57	7
35-40	35	41	14	2	3	3	0	1	63	7
40-45	39	36	14	2	3	3	0	1	66	7
45-50	42	33	13	3	3	4	0	1	70	9
50-55	43	32	13	3	3	4	0	1	74	10
55-60	45	31	12	4	3	4	1	2	79	9
60-65	48	29	11	4	2	4	1	2	83	8
65-70	52	25	12	4	2	3	1	2	85	8
70-75	59	20	11	3	2	3	1	2	85	7
75-80	60	18	12	3	2	3	1	2	85	5
80-85	61	17	11	3	2	3	0	2	87	4
85+	62	16	12	4	2	2	0	2	90	2

Vote by gender

Table 15: Current vote (column) by gender (row), row percentages.

	Con	Lab	LD	Brexit	Green	SNP	PC	Other	Turnout	Fraction
Female	42	36	11	2	3	4	0	1	71	52
Male	43	32	13	3	3	3	1	2	68	48

Vote by qualifications

Table 16: Current vote (column) by qualifications (row), row percentages.

	Con	Lab	LD	Brexit	Green	SNP	PC	Other	Turnout	Fraction
Does not apply	60	18	11	3	2	3	1	2	86	19
None	44	37	5	6	2	4	0	1	59	6
Other	43	37	12	4	3	0	0	2	62	4
Level 1	48	36	7	4	1	3	0	1	66	6
Level 2	48	32	9	4	3	2	1	1	60	14
Level 3	38	41	11	3	3	3	0	1	63	15
Level 4+	33	39	17	2	3	5	1	1	75	36

Please note: the category “Does not apply” includes all voters over age 70, regardless of their actual level of qualifications. This is because the Annual Population Survey does not record qualifications for retired individuals past the age of 70.

Vote by (self-reported) attention to politics

Table 17: Current vote (column) by attention (row), row percentages.

	Con	Lab	LD	Brexit	Green	SNP	PC	Other	Turnout	Fraction
0	43	35	10	4	3	3	1	2	43	5
1	43	34	11	4	3	3	1	2	50	3
2	43	34	11	4	3	3	0	2	54	5
3	43	34	11	3	3	3	0	2	59	9
4	43	34	11	3	3	3	1	2	60	7
5	43	34	12	3	3	3	1	1	71	14
6	43	34	12	3	3	3	0	1	77	13
7	43	34	13	2	2	4	0	1	79	17
8	42	34	13	2	2	4	0	1	85	14
9	42	34	14	2	2	4	0	1	86	5
10	41	34	14	2	2	4	0	1	89	7

Vote by ethnicity

Table 18: Current vote (column) by ethnicity (row), row percentages.

	Con	Lab	LD	Brexit	Green	SNP	PC	Other	Turnout	Fraction
White	44	32	12	3	3	4	1	2	70	91
Asian	28	55	11	2	3	1	0	1	69	6
Black	20	64	9	2	4	0	0	1	55	2
Mixed/Multiple	19	58	16	2	3	0	0	1	56	1

Vote by marital status

Table 19: Current vote (column) by marital status (row), row percentages.

	Con	Lab	LD	Brexit	Green	SNP	PC	Other	Turnout	Fraction
Never Married/Partnered	31	45	12	3	4	4	0	1	57	27
Ever Married/Partnered	47	30	12	3	2	3	0	2	76	73

Vote by region

Table 20: Current vote (column) by region (row), row percentages.

	Con	Lab	LD	Brexit	Green	SNP	PC	Other	Turnout	Fraction
North East	35	44	7	10	2	0	0	1	67	4
North West	36	44	8	6	3	0	0	2	68	11
Yorkshire and The Humber	40	40	8	7	2	0	0	2	68	8
East Midlands	51	34	8	2	2	0	0	2	71	8
West Midlands	49	36	9	2	3	0	0	1	69	9
East of England	54	27	14	1	3	0	0	2	72	10
London	31	47	15	2	3	0	0	1	69	12
South East	51	24	19	0	4	0	0	2	73	15
South West	50	25	19	0	3	0	0	2	73	10
Wales	34	43	5	6	1	0	10	1	69	5
Scotland	27	20	10	1	1	41	0	0	67	8

CONSTITUENCY ESTIMATES

Table 21: Current vote (column) by constituency (row), row percentages.

	Con	Lab	LD	Brexit	Green	SNP	PC	Other	Turnout
Aldershot	55	28	13	0	4	0	0	0	70
Aldridge-Brownhills	66	22	7	0	3	0	0	3	68
Altrincham and Sale West	45	36	14	0	3	0	0	3	74
Amber Valley	59	33	6	0	3	0	0	0	70
Arundel and South Downs	56	19	19	0	4	0	0	3	79
Ashfield	44	35	4	10	2	0	0	5	68
Ashford	57	25	10	0	5	0	0	3	72
Ashton-under-Lyne	33	45	5	13	3	0	0	0	64
Aylesbury	48	32	16	0	4	0	0	0	73
Banbury	53	33	11	0	3	0	0	0	73
Barking	23	57	6	11	3	0	0	0	62
Barnsley Central	16	45	4	30	3	0	0	2	64
Barnsley East	23	43	5	26	3	0	0	0	62
Barrow and Furness	51	37	4	6	2	0	0	0	69
Basildon and Billericay	64	22	8	0	3	0	0	3	69
Basingstoke	51	32	12	0	4	0	0	2	72
Bassetlaw	45	38	5	12	0	0	0	0	70
Bath	34	10	51	3	0	0	0	2	74
Batley and Spen	39	44	5	7	2	0	0	3	68
Battersea	33	51	12	1	3	0	0	0	70
Beaconsfield	54	11	0	0	3	0	0	31	75
Beckenham	52	25	20	0	4	0	0	0	77
Bedford	43	43	8	3	3	0	0	0	63
Bermondsey and Old Southwark	11	53	33	3	0	0	0	0	65
Berwick-upon-Tweed	52	20	24	0	3	0	0	0	73
Bethnal Green and Bow	12	66	11	3	6	0	0	2	65
Beverley and Holderness	56	28	10	0	2	0	0	3	73
Bexhill and Battle	61	23	12	0	4	0	0	0	76
Bexleyheath and Crayford	56	32	7	0	3	0	0	2	71
Birkenhead	15	53	7	6	4	0	0	14	67
Birmingham, Edgbaston	38	50	6	3	2	0	0	0	62
Birmingham, Erdington	38	47	5	6	3	0	0	0	58
Birmingham, Hall Green	16	61	11	4	3	0	0	4	67
Birmingham, Hodge Hill	19	65	4	7	4	0	0	3	63
Birmingham, Ladywood	15	68	9	4	4	0	0	0	55
Birmingham, Northfield	41	44	6	6	2	0	0	1	60
Birmingham, Perry Barr	27	55	7	5	4	0	0	2	66
Birmingham, Selly Oak	29	56	6	6	4	0	0	0	62
Birmingham, Yardley	20	51	17	8	3	0	0	0	62

	Con	Lab	LD	Brexit	Green	SNP	PC	Other	Turnout
Bishop Auckland	47	42	3	8	0	0	0	0	68
Blackburn	25	56	5	9	3	0	0	2	64
Blackley and Broughton	22	58	8	9	4	0	0	0	56
Blackpool North and Cleveleys	56	36	4	0	2	0	0	2	66
Blackpool South	44	39	3	11	2	0	0	1	62
Blaydon	28	45	10	13	2	0	0	2	70
Blyth Valley	37	45	7	8	3	0	0	0	68
Bognor Regis and Littlehampton	58	24	12	0	4	0	0	3	71
Bolsover	41	39	4	12	2	0	0	2	68
Bolton North East	44	44	4	6	2	0	0	0	68
Bolton South East	31	46	5	15	3	0	0	0	60
Bolton West	53	40	5	0	2	0	0	0	72
Bootle	13	66	7	11	4	0	0	0	66
Boston and Skegness	71	20	6	0	0	0	0	3	69
Bosworth	56	17	24	0	3	0	0	0	72
Bournemouth East	52	33	9	0	4	0	0	2	67
Bournemouth West	53	34	9	0	4	0	0	0	62
Bracknell	53	26	16	0	3	0	0	2	72
Bradford East	23	54	10	10	4	0	0	0	63
Bradford South	41	42	5	9	2	0	0	0	63
Bradford West	20	58	6	9	4	0	0	4	65
Braintree	64	22	10	0	0	0	0	3	72
Brent Central	21	65	10	0	4	0	0	0	61
Brent North	31	55	8	2	3	0	0	1	68
Brentford and Isleworth	36	50	10	2	2	0	0	0	72
Brentwood and Ongar	65	12	19	0	3	0	0	0	74
Bridgwater and West Somerset	57	24	14	0	3	0	0	3	71
Brigg and Goole	63	30	5	0	3	0	0	0	71
Brighton, Kemptown	34	53	6	4	3	0	0	0	71
Brighton, Pavilion	19	16	0	2	62	0	0	1	69
Bristol East	29	57	7	4	3	0	0	0	70
Bristol North West	38	54	6	0	3	0	0	0	72
Bristol South	28	57	7	4	4	0	0	0	68
Bristol West	13	59	0	4	24	0	0	0	73
Broadland	57	24	13	0	3	0	0	2	74
Bromley and Chislehurst	51	29	14	0	3	0	0	2	75
Bromsgrove	57	25	14	0	4	0	0	0	75
Broxbourne	65	22	10	0	3	0	0	0	70
Broxtowe	46	39	0	0	3	0	0	12	77
Buckingham	50	14	28	6	0	0	0	3	76
Burnley	33	40	8	15	2	0	0	2	64
Burton	55	37	5	0	3	0	0	0	70
Bury North	43	45	4	6	2	0	0	0	69
Bury South	47	40	4	4	2	0	0	3	69

	Con	Lab	LD	Brexit	Green	SNP	PC	Other	Turnout
Bury St Edmunds	57	28	0	0	13	0	0	3	74
Calder Valley	50	42	5	0	0	0	0	3	72
Camberwell and Peckham	11	67	11	3	6	0	0	1	65
Camborne and Redruth	49	39	7	0	3	0	0	2	72
Cambridge	13	50	30	2	4	0	0	1	69
Cannock Chase	69	27	0	0	4	0	0	0	66
Canterbury	40	52	6	0	0	0	0	2	73
Carlisle	55	39	4	0	0	0	0	2	71
Carshalton and Wallington	38	7	48	4	2	0	0	2	72
Castle Point	72	20	8	0	0	0	0	0	72
Central Devon	54	26	17	0	4	0	0	0	78
Central Suffolk and North Ipswich	60	25	11	0	4	0	0	0	75
Charnwood	57	28	10	0	4	0	0	0	73
Chatham and Aylesford	59	29	7	0	2	0	0	2	67
Cheadle	48	9	43	0	0	0	0	0	77
Chelmsford	51	17	30	0	0	0	0	2	72
Chelsea and Fulham	44	23	31	0	0	0	0	2	66
Cheltenham	47	6	45	0	0	0	0	2	73
Chesham and Amersham	51	12	33	0	4	0	0	0	80
Chesterfield	36	44	7	9	2	0	0	2	68
Chichester	55	15	24	0	4	0	0	2	73
Chingford and Woodford Green	47	45	8	0	0	0	0	0	69
Chippenham	55	11	33	0	0	0	0	0	76
Chipping Barnet	41	45	11	0	2	0	0	1	72
Chorley	0	0	0	0	15	0	0	85	75
Christchurch	63	14	20	0	3	0	0	0	77
Cities of London and Westminster	38	25	32	0	3	0	0	1	64
City of Chester	39	52	4	4	2	0	0	0	75
City of Durham	31	47	11	9	3	0	0	0	68
Clacton	66	19	6	0	3	0	0	5	68
Cleethorpes	63	29	6	0	2	0	0	0	69
Colchester	48	32	18	0	3	0	0	0	68
Colne Valley	47	41	5	4	2	0	0	1	71
Congleton	54	32	9	0	3	0	0	2	76
Copeland	54	39	5	0	2	0	0	0	69
Corby	54	41	6	0	0	0	0	0	72
Coventry North East	30	54	5	7	3	0	0	0	64
Coventry North West	41	45	6	6	2	0	0	0	67
Coventry South	39	45	6	5	2	0	0	2	66
Crawley	49	42	7	0	3	0	0	0	69
Crewe and Nantwich	46	43	4	4	2	0	0	1	71
Croydon Central	39	49	5	4	2	0	0	1	69
Croydon North	21	63	7	4	4	0	0	2	63
Croydon South	47	38	11	0	3	0	0	2	73

	Con	Lab	LD	Brexit	Green	SNP	PC	Other	Turnout
Dagenham and Rainham	42	41	4	10	2	0	0	1	66
Darlington	45	39	5	7	2	0	0	2	67
Dartford	59	31	7	0	3	0	0	0	72
Daventry	60	21	15	0	4	0	0	0	75
Denton and Reddish	26	51	7	12	3	0	0	2	63
Derby North	50	37	6	4	2	0	0	2	70
Derby South	32	50	7	11	0	0	0	0	61
Derbyshire Dales	55	28	13	0	3	0	0	0	78
Devizes	54	19	22	0	5	0	0	0	72
Dewsbury	43	45	4	5	2	0	0	1	70
Don Valley	44	36	4	12	2	0	0	2	67
Doncaster Central	32	42	5	16	3	0	0	3	62
Doncaster North	24	45	5	22	0	0	0	3	64
Dover	53	36	6	0	3	0	0	3	72
Dudley North	51	41	3	0	2	0	0	3	66
Dudley South	60	31	6	0	3	0	0	0	66
Dulwich and West Norwood	18	58	0	2	21	0	0	1	71
Ealing Central and Acton	32	52	11	2	2	0	0	0	72
Ealing North	28	59	10	0	4	0	0	0	70
Ealing, Southall	21	56	14	3	5	0	0	2	72
Easington	22	47	6	21	0	0	0	4	61
East Devon	47	3	2	0	1	0	0	47	77
East Ham	16	68	8	4	3	0	0	2	63
East Hampshire	57	13	25	0	4	0	0	2	79
East Surrey	53	16	24	0	3	0	0	3	74
East Worthing and Shoreham	49	40	6	0	3	0	0	2	73
East Yorkshire	59	27	8	0	3	0	0	3	71
Eastbourne	49	5	39	5	0	0	0	1	73
Eastleigh	51	10	36	0	3	0	0	0	72
Eddisbury	53	21	22	0	2	0	0	2	73
Edmonton	23	61	6	4	3	0	0	2	63
Ellesmere Port and Neston	36	49	6	7	2	0	0	0	73
Elmet and Rothwell	52	33	10	0	3	0	0	3	75
Eltham	39	47	7	4	3	0	0	0	71
Enfield North	38	50	6	4	2	0	0	0	67
Enfield, Southgate	41	51	5	2	1	0	0	0	73
Epping Forest	60	21	12	0	4	0	0	3	72
Epsom and Ewell	51	17	26	0	4	0	0	3	77
Erewash	54	36	6	0	2	0	0	2	71
Erith and Thamesmead	36	46	7	6	2	0	0	2	65
Esher and Walton	46	8	44	0	0	0	0	2	76
Exeter	31	57	0	4	7	0	0	1	70
Fareham	60	22	13	0	5	0	0	0	75
Faversham and Mid Kent	60	23	11	0	4	0	0	3	74

	Con	Lab	LD	Brexit	Green	SNP	PC	Other	Turnout
Feltham and Heston	32	52	9	5	3	0	0	0	66
Filton and Bradley Stoke	49	40	7	0	3	0	0	1	72
Finchley and Golders Green	50	23	27	0	0	0	0	0	72
Folkestone and Hythe	56	27	10	0	5	0	0	3	72
Forest of Dean	57	34	0	0	6	0	0	3	76
Fylde	55	30	9	0	4	0	0	3	73
Gainsborough	62	24	11	0	0	0	0	3	71
Garston and Halewood	16	64	8	8	3	0	0	2	68
Gateshead	32	55	9	0	4	0	0	0	64
Gedling	43	44	6	6	2	0	0	0	73
Gillingham and Rainham	55	33	7	0	2	0	0	2	69
Gloucester	53	38	7	0	2	0	0	0	68
Gosport	62	23	10	0	4	0	0	0	71
Grantham and Stamford	63	23	11	0	4	0	0	0	73
Gravesham	56	35	6	0	3	0	0	0	70
Great Grimsby	42	41	3	11	2	0	0	2	60
Great Yarmouth	61	30	5	0	2	0	0	3	65
Greenwich and Woolwich	22	56	11	4	5	0	0	2	67
Guildford	44	10	39	0	0	0	0	7	74
Hackney North and Stoke Newington	11	65	10	3	9	0	0	3	66
Hackney South and Shoreditch	9	69	11	3	7	0	0	1	64
Halesowen and Rowley Regis	59	33	4	0	2	0	0	2	70
Halifax	39	45	4	9	2	0	0	0	62
Haltemprice and Howden	59	25	11	0	3	0	0	3	74
Halton	24	55	6	12	3	0	0	0	66
Hammersmith	23	59	12	3	3	0	0	0	70
Hampstead and Kilburn	26	50	20	2	3	0	0	0	68
Harborough	51	25	19	0	3	0	0	2	75
Harlow	58	35	7	0	0	0	0	0	70
Harrogate and Knaresborough	50	10	38	0	0	0	0	2	76
Harrow East	45	43	10	0	2	0	0	0	73
Harrow West	32	54	10	2	3	0	0	0	71
Hartlepool	31	39	5	22	0	0	0	2	62
Harwich and North Essex	57	28	10	0	3	0	0	2	73
Hastings and Rye	47	44	7	0	0	0	0	2	71
Havant	62	20	11	0	4	0	0	3	68
Hayes and Harlington	29	55	8	4	3	0	0	2	63
Hazel Grove	50	10	40	0	0	0	0	0	73
Hemel Hempstead	52	32	13	0	3	0	0	0	73
Hemsworth	32	44	4	15	2	0	0	3	67
Hendon	45	43	10	0	2	0	0	0	72
Henley	54	12	31	0	4	0	0	0	79
Hereford and South Herefordshire	59	24	12	0	6	0	0	0	73
Hertford and Stortford	52	23	18	0	4	0	0	3	74

	Con	Lab	LD	Brexit	Green	SNP	PC	Other	Turnout
Hertsmere	60	22	15	0	3	0	0	0	73
Hexham	55	33	9	0	4	0	0	0	77
Heywood and Middleton	36	45	4	12	2	0	0	0	62
High Peak	41	47	6	4	2	0	0	0	73
Hitchin and Harpenden	46	20	31	0	0	0	0	3	78
Holborn and St Pancras	13	60	17	2	5	0	0	1	64
Hornchurch and Upminster	62	26	7	0	3	0	0	2	71
Hornsey and Wood Green	12	53	26	2	5	0	0	2	74
Horsham	54	17	24	0	3	0	0	2	77
Houghton and Sunderland South	29	45	5	16	3	0	0	3	63
Hove	25	61	7	3	3	0	0	1	74
Huddersfield	35	49	5	7	4	0	0	0	65
Huntingdon	53	27	14	0	3	0	0	3	74
Hyndburn	41	43	3	10	2	0	0	0	65
Ilford North	38	50	6	3	2	0	0	1	71
Ilford South	20	64	2	2	1	0	0	10	67
Ipswich	46	43	4	5	2	0	0	1	68
Isle of Wight	53	26	0	0	16	0	0	5	70
Islington North	11	60	18	2	7	0	0	1	69
Islington South and Finsbury	15	57	20	3	4	0	0	2	67
Jarrow	23	47	6	17	4	0	0	3	64
Keighley	46	44	4	4	0	0	0	1	71
Kenilworth and Southam	50	18	25	0	4	0	0	3	77
Kensington	36	38	21	2	2	0	0	1	64
Kettering	54	34	6	0	3	0	0	2	72
Kingston and Surbiton	32	9	52	3	2	0	0	1	76
Kingston upon Hull East	27	42	6	23	3	0	0	0	60
Kingston upon Hull North	27	47	7	16	4	0	0	0	59
Kingston upon Hull West and Hessle	28	43	7	19	3	0	0	0	60
Kingswood	51	38	6	0	3	0	0	1	71
Knowsley	13	67	4	10	3	0	0	2	64
Lancaster and Fleetwood	40	47	4	7	3	0	0	0	68
Leeds Central	20	60	5	8	5	0	0	2	54
Leeds East	29	53	5	10	3	0	0	0	64
Leeds North East	21	54	11	7	4	0	0	3	74
Leeds North West	19	50	24	5	2	0	0	0	68
Leeds West	24	55	6	9	4	0	0	2	64
Leicester East	27	54	8	4	5	0	0	2	68
Leicester South	22	65	6	4	4	0	0	0	66
Leicester West	29	56	5	6	3	0	0	0	58
Leigh	39	43	5	11	0	0	0	2	65
Lewes	48	6	42	0	3	0	0	2	78
Lewisham East	20	58	12	4	4	0	0	2	66
Lewisham West and Penge	22	56	12	4	4	0	0	2	69

	Con	Lab	LD	Brexit	Green	SNP	PC	Other	Turnout
Lewisham, Deptford	12	65	12	3	7	0	0	2	62
Leyton and Wanstead	20	61	9	3	5	0	0	2	67
Lichfield	60	22	12	0	4	0	0	2	75
Lincoln	44	45	3	5	1	0	0	1	69
Liverpool, Riverside	14	64	7	7	8	0	0	0	56
Liverpool, Walton	15	71	7	0	4	0	0	4	66
Liverpool, Wavertree	13	60	15	7	4	0	0	2	66
Liverpool, West Derby	12	64	7	10	4	0	0	3	67
Loughborough	47	41	7	0	3	0	0	2	68
Louth and Horncastle	67	22	8	0	0	0	0	4	72
Ludlow	60	15	22	0	3	0	0	0	77
Luton North	34	48	8	6	3	0	0	2	67
Luton South	27	46	0	10	3	0	0	14	66
Macclesfield	51	36	9	0	3	0	0	0	74
Maidenhead	54	13	30	0	3	0	0	0	78
Maidstone and The Weald	55	19	21	0	3	0	0	2	71
Makerfield	29	46	5	16	3	0	0	0	66
Maldon	66	17	13	0	4	0	0	0	74
Manchester Central	14	66	7	7	4	0	0	1	52
Manchester, Gorton	12	67	9	6	6	0	0	0	59
Manchester, Withington	12	61	19	4	5	0	0	0	68
Mansfield	58	35	5	0	0	0	0	2	67
Meon Valley	59	13	24	0	4	0	0	0	76
Meriden	58	26	11	0	5	0	0	0	69
Mid Bedfordshire	55	24	14	0	4	0	0	3	75
Mid Derbyshire	56	32	9	0	3	0	0	0	75
Mid Dorset and North Poole	54	6	37	0	3	0	0	0	78
Mid Norfolk	58	25	13	0	0	0	0	3	72
Mid Sussex	50	19	25	0	4	0	0	2	76
Mid Worcestershire	60	17	16	0	4	0	0	2	75
Middlesbrough	24	49	5	16	3	0	0	3	58
Middlesbrough South and East Cleveland	53	39	5	0	2	0	0	0	68
Milton Keynes North	47	45	5	0	3	0	0	0	71
Milton Keynes South	48	43	6	0	2	0	0	2	68
Mitcham and Morden	22	60	9	3	3	0	0	1	68
Mole Valley	52	8	34	0	4	0	0	3	80
Morecambe and Lunesdale	48	42	6	0	2	0	0	2	71
Morley and Outwood	53	39	5	0	2	0	0	2	71
New Forest East	55	17	21	0	5	0	0	3	75
New Forest West	63	15	18	0	5	0	0	0	76
Newark	60	26	11	0	3	0	0	0	73
Newbury	52	7	35	0	4	0	0	2	75
Newcastle upon Tyne Central	20	58	8	11	3	0	0	0	64
Newcastle upon Tyne East	27	57	11	0	5	0	0	0	62

	Con	Lab	LD	Brexit	Green	SNP	PC	Other	Turnout
Newcastle upon Tyne North	31	46	9	11	3	0	0	0	72
Newcastle-under-Lyme	46	39	6	7	2	0	0	0	68
Newton Abbot	52	18	25	0	3	0	0	2	74
Normanton, Pontefract and Castleford	28	45	5	19	0	0	0	3	67
North Cornwall	54	8	37	0	0	0	0	2	75
North Devon	54	8	34	0	3	0	0	2	74
North Dorset	60	15	21	0	4	0	0	0	77
North Durham	28	45	8	14	3	0	0	2	66
North East Bedfordshire	57	24	13	0	3	0	0	3	74
North East Cambridgeshire	66	22	8	0	4	0	0	0	67
North East Derbyshire	57	35	5	0	2	0	0	0	72
North East Hampshire	55	9	30	0	3	0	0	2	79
North East Hertfordshire	52	24	18	0	6	0	0	0	77
North East Somerset	49	28	18	0	3	0	0	2	77
North Herefordshire	59	15	18	0	8	0	0	0	76
North Norfolk	51	6	36	6	0	0	0	0	75
North Shropshire	56	24	13	0	4	0	0	2	71
North Somerset	54	23	18	0	4	0	0	0	77
North Swindon	54	36	7	0	2	0	0	0	71
North Thanet	60	30	7	0	3	0	0	0	70
North Tyneside	28	51	7	12	3	0	0	0	67
North Warwickshire	59	31	6	0	3	0	0	0	68
North West Cambridgeshire	58	28	10	0	4	0	0	0	71
North West Durham	36	41	7	11	2	0	0	2	69
North West Hampshire	58	19	19	0	4	0	0	0	74
North West Leicestershire	54	31	10	0	3	0	0	2	73
North West Norfolk	60	30	6	0	4	0	0	0	70
North Wiltshire	55	10	32	0	3	0	0	0	77
Northampton North	51	41	6	0	2	0	0	0	70
Northampton South	54	38	5	0	3	0	0	0	64
Norwich North	46	43	7	0	2	0	0	2	70
Norwich South	28	55	9	4	4	0	0	0	67
Nottingham East	17	57	5	8	3	0	0	10	60
Nottingham North	29	50	5	13	3	0	0	0	58
Nottingham South	29	56	6	6	3	0	0	0	62
Nuneaton	55	39	4	0	2	0	0	0	69
Old Bexley and Sidcup	58	27	9	0	3	0	0	3	75
Oldham East and Saddleworth	37	45	5	9	2	0	0	2	67
Oldham West and Royton	29	51	6	10	2	0	0	2	65
Orpington	57	19	20	0	4	0	0	0	76
Oxford East	16	57	15	4	6	0	0	2	67
Oxford West and Abingdon	38	7	53	2	0	0	0	0	80
Pendle	54	37	4	0	2	0	0	2	67
Penistone and Stocksbridge	46	36	8	10	0	0	0	0	73

	Con	Lab	LD	Brexit	Green	SNP	PC	Other	Turnout
Penrith and The Border	56	22	15	0	4	0	0	3	71
Peterborough	48	40	4	4	2	0	0	1	69
Plymouth, Moor View	57	36	4	0	2	0	0	0	68
Plymouth, Sutton and Devonport	39	49	3	8	2	0	0	0	58
Poole	54	22	17	0	4	0	0	3	71
Poplar and Limehouse	17	54	19	4	5	0	0	2	65
Portsmouth North	58	30	7	0	3	0	0	2	69
Portsmouth South	35	46	13	4	0	0	0	2	64
Preston	22	57	6	12	3	0	0	0	63
Pudsey	49	42	5	0	2	0	0	2	75
Putney	37	40	19	0	4	0	0	0	71
Rayleigh and Wickford	67	19	10	0	3	0	0	0	73
Reading East	38	48	8	2	3	0	0	1	73
Reading West	46	42	9	0	3	0	0	0	71
Redcar	35	40	7	14	3	0	0	2	66
Redditch	56	35	6	0	2	0	0	0	71
Reigate	51	20	21	0	5	0	0	3	75
Ribble Valley	54	31	9	0	4	0	0	2	76
Richmond (Yorks)	60	20	12	0	5	0	0	3	73
Richmond Park	40	5	54	0	0	0	0	1	79
Rochdale	28	49	8	11	4	0	0	0	66
Rochester and Strood	57	32	7	0	3	0	0	2	69
Rochford and Southend East	54	35	7	0	0	0	0	3	66
Romford	64	26	7	0	3	0	0	0	67
Romsey and Southampton North	52	11	35	0	0	0	0	2	75
Rossendale and Darwen	56	37	5	0	2	0	0	0	69
Rother Valley	41	36	4	15	2	0	0	2	69
Rotherham	31	42	6	18	0	0	0	3	64
Rugby	52	37	8	0	3	0	0	0	75
Ruislip, Northwood and Pinner	50	30	15	0	3	0	0	3	74
Runnymede and Weybridge	53	24	17	0	4	0	0	3	72
Rushcliffe	47	37	14	0	0	0	0	3	80
Rutland and Melton	56	18	18	0	4	0	0	3	74
Saffron Walden	61	15	21	0	4	0	0	0	76
Salford and Eccles	25	54	6	10	4	0	0	0	61
Salisbury	54	21	20	0	3	0	0	2	76
Scarborough and Whitby	54	39	4	0	0	0	0	3	71
Scunthorpe	45	41	4	9	2	0	0	0	66
Sedgefield	40	39	5	12	2	0	0	2	67
Sefton Central	31	54	4	7	2	0	0	2	75
Selby and Ainsty	58	29	8	0	3	0	0	2	72
Sevenoaks	55	17	21	0	5	0	0	3	73
Sheffield Central	16	60	7	6	8	0	0	2	60
Sheffield South East	30	50	6	11	0	0	0	2	65

	Con	Lab	LD	Brexit	Green	SNP	PC	Other	Turnout
Sheffield, Brightside and Hillsborough	23	54	5	11	5	0	0	1	59
Sheffield, Hallam	23	32	36	5	3	0	0	2	74
Sheffield, Heeley	29	50	7	10	4	0	0	0	65
Sherwood	55	36	5	0	2	0	0	2	72
Shipley	48	43	6	0	2	0	0	2	72
Shrewsbury and Atcham	49	37	9	0	3	0	0	2	74
Sittingbourne and Sheppey	57	27	8	0	3	0	0	4	69
Skipton and Ripon	57	22	12	0	6	0	0	3	76
Sleaford and North Hykeham	65	19	9	0	3	0	0	3	75
Slough	32	54	7	5	3	0	0	0	61
Solihull	52	17	27	0	4	0	0	0	75
Somerton and Frome	56	11	28	0	5	0	0	0	76
South Basildon and East Thurrock	62	28	7	0	0	0	0	3	68
South Cambridgeshire	41	14	45	0	0	0	0	0	78
South Derbyshire	57	32	8	0	3	0	0	0	72
South Dorset	52	32	9	0	4	0	0	2	73
South East Cambridgeshire	50	18	30	0	0	0	0	2	74
South East Cornwall	55	20	20	0	3	0	0	2	78
South Holland and The Deepings	71	14	7	0	5	0	0	3	71
South Leicestershire	64	22	11	0	3	0	0	0	73
South Norfolk	55	27	14	0	4	0	0	0	75
South Northamptonshire	58	22	14	0	5	0	0	2	76
South Ribble	54	36	7	0	3	0	0	0	73
South Shields	22	42	7	20	5	0	0	4	65
South Staffordshire	67	20	9	0	5	0	0	0	73
South Suffolk	59	22	14	0	5	0	0	0	76
South Swindon	50	44	6	0	0	0	0	0	72
South Thanet	55	37	5	0	3	0	0	0	74
South West Bedfordshire	55	32	10	0	3	0	0	0	72
South West Devon	61	25	10	0	4	0	0	0	76
South West Hertfordshire	50	12	9	0	1	0	0	27	77
South West Norfolk	62	22	10	0	3	0	0	3	70
South West Surrey	54	11	35	0	0	0	0	0	78
South West Wiltshire	56	26	15	0	4	0	0	0	74
Southampton, Itchen	49	40	7	0	3	0	0	2	65
Southampton, Test	33	52	6	5	3	0	0	2	66
Southend West	57	31	10	0	0	0	0	2	72
Southport	46	35	19	0	0	0	0	0	68
Spelthorne	55	26	15	0	4	0	0	0	73
St Albans	38	9	50	0	2	0	0	1	78
St Austell and Newquay	53	24	18	0	3	0	0	2	68
St Helens North	27	48	6	14	4	0	0	0	68
St Helens South and Whiston	20	54	6	14	5	0	0	2	66
St Ives	47	8	41	0	2	0	0	2	80

	Con	Lab	LD	Brexit	Green	SNP	PC	Other	Turnout
Stafford	53	37	7	0	4	0	0	0	74
Staffordshire Moorlands	60	30	8	0	2	0	0	0	73
Stalybridge and Hyde	39	45	4	7	3	0	0	2	61
Stevenage	51	38	8	0	3	0	0	0	71
Stockport	29	50	10	7	4	0	0	0	67
Stockton North	36	44	4	13	0	0	0	2	65
Stockton South	45	45	4	6	0	0	0	0	71
Stoke-on-Trent Central	41	43	4	10	2	0	0	0	60
Stoke-on-Trent North	45	40	3	8	2	0	0	2	63
Stoke-on-Trent South	58	37	4	0	0	0	0	0	66
Stone	64	23	10	0	3	0	0	0	75
Stourbridge	55	34	6	0	2	0	0	3	70
Stratford-on-Avon	56	13	27	0	3	0	0	0	77
Streatham	15	51	24	3	7	0	0	0	67
Stretford and Urmston	27	58	7	5	3	0	0	0	71
Stroud	44	48	0	3	5	0	0	2	77
Suffolk Coastal	53	25	15	0	4	0	0	2	76
Sunderland Central	30	45	6	14	3	0	0	2	64
Surrey Heath	56	11	27	0	4	0	0	2	77
Sutton and Cheam	48	10	39	0	2	0	0	0	74
Sutton Coldfield	58	27	12	0	3	0	0	0	72
Tamworth	60	28	7	0	3	0	0	2	69
Tatton	56	22	18	0	3	0	0	0	74
Taunton Deane	52	7	38	0	0	0	0	3	74
Telford	55	39	6	0	0	0	0	0	68
Tewkesbury	57	19	19	0	5	0	0	0	75
The Cotswolds	54	12	30	0	4	0	0	0	75
The Wrekin	61	30	6	0	3	0	0	0	72
Thirsk and Malton	60	21	12	0	4	0	0	3	74
Thornbury and Yate	53	7	40	0	0	0	0	0	77
Thurrock	56	34	5	0	3	0	0	3	67
Tiverton and Honiton	56	23	14	0	5	0	0	2	75
Tonbridge and Malling	62	18	15	0	5	0	0	0	76
Tooting	27	54	12	2	3	0	0	1	73
Torbay	57	11	26	0	3	0	0	3	72
Torridge and West Devon	54	18	22	0	4	0	0	2	76
Totnes	51	15	31	0	0	0	0	3	75
Tottenham	12	71	8	3	5	0	0	2	65
Truro and Falmouth	46	38	11	0	2	0	0	2	75
Tunbridge Wells	51	20	26	0	0	0	0	3	74
Twickenham	33	5	61	2	0	0	0	0	79
Tynemouth	38	47	6	7	2	0	0	0	73
Uxbridge and South Ruislip	49	40	6	0	3	0	0	2	68
Vauxhall	13	58	20	2	5	0	0	1	64

	Con	Lab	LD	Brexit	Green	SNP	PC	Other	Turnout
Wakefield	47	39	4	8	0	0	0	2	68
Wallasey	25	56	7	9	3	0	0	0	68
Walsall North	58	34	5	0	3	0	0	0	61
Walsall South	39	45	4	7	2	0	0	2	67
Walthamstow	15	68	7	3	5	0	0	1	65
Wansbeck	35	45	8	8	3	0	0	2	69
Wantage	46	19	32	0	0	0	0	3	73
Warley	26	53	6	12	4	0	0	0	64
Warrington North	38	47	6	7	2	0	0	0	68
Warrington South	44	45	5	4	0	0	0	1	73
Warwick and Leamington	42	46	6	2	2	0	0	1	73
Washington and Sunderland West	28	44	5	19	2	0	0	2	62
Watford	46	38	14	0	0	0	0	2	70
Waveney	56	32	5	0	5	0	0	2	69
Wealden	59	18	19	0	4	0	0	0	76
Weaver Vale	42	47	5	4	2	0	0	0	72
Wellingborough	57	31	8	0	4	0	0	0	70
Wells	50	7	42	0	0	0	0	2	75
Welwyn Hatfield	52	33	12	0	3	0	0	0	72
Wentworth and Dearne	30	44	6	17	0	0	0	3	63
West Bromwich East	39	44	5	8	2	0	0	2	61
West Bromwich West	43	38	4	12	2	0	0	0	59
West Dorset	53	10	32	0	4	0	0	0	74
West Ham	18	65	9	4	4	0	0	1	62
West Lancashire	36	50	4	8	2	0	0	0	72
West Suffolk	61	26	9	0	4	0	0	0	70
West Worcestershire	56	20	20	0	4	0	0	0	77
Westminster North	29	53	12	2	3	0	0	1	67
Westmorland and Lonsdale	42	4	51	3	0	0	0	0	78
Weston-Super-Mare	54	31	12	0	3	0	0	0	69
Wigan	27	44	6	20	4	0	0	0	65
Wimbledon	42	25	31	0	0	0	0	2	76
Winchester	46	5	47	0	0	0	0	2	79
Windsor	55	18	21	0	4	0	0	2	76
Wirral South	39	49	6	4	2	0	0	0	76
Wirral West	41	49	4	4	2	0	0	0	76
Witham	60	22	13	0	5	0	0	0	73
Witney	53	14	32	0	0	0	0	0	77
Woking	50	17	30	0	3	0	0	2	74
Wokingham	46	9	41	0	3	0	0	2	78
Wolverhampton North East	46	41	4	7	2	0	0	0	62
Wolverhampton South East	35	48	5	10	2	0	0	0	62
Wolverhampton South West	46	46	4	4	0	0	0	0	70
Worcester	48	40	7	0	3	0	0	1	70

	Con	Lab	LD	Brexit	Green	SNP	PC	Other	Turnout
Workington	41	43	4	8	2	0	0	1	70
Worsley and Eccles South	41	43	5	7	3	0	0	0	62
Worthing West	54	31	9	0	4	0	0	3	73
Wycombe	45	39	11	0	3	0	0	2	70
Wyre and Preston North	54	33	7	0	3	0	0	2	75
Wyre Forest	59	28	10	0	4	0	0	0	72
Wythenshawe and Sale East	27	55	6	7	3	0	0	1	62
Yeovil	54	8	33	0	3	0	0	2	74
York Central	26	54	10	5	4	0	0	2	66
York Outer	47	35	17	0	0	0	0	2	76
Aberdeen North	16	22	9	4	4	46	0	0	60
Aberdeen South	40	11	11	0	0	39	0	0	69
Airdrie and Shotts	22	33	5	0	2	38	0	0	59
Angus	43	5	6	0	0	46	0	0	65
Argyll and Bute	35	7	18	0	0	40	0	0	72
Ayr, Carrick and Cumnock	42	12	6	0	0	40	0	0	66
Banff and Buchan	47	4	5	0	0	45	0	0	65
Berwickshire, Roxburgh and Selkirk	48	6	8	0	0	37	0	0	73
Caithness, Sutherland and Easter Ross	18	4	41	5	0	32	0	0	69
Central Ayrshire	37	16	7	0	0	40	0	0	66
Coatbridge, Chryston and Bellshill	12	44	3	0	1	39	0	0	63
Cumbernauld, Kilsyth and Kirkintilloch East	19	30	5	0	0	45	0	0	68
Dumfries and Galloway	46	10	6	0	0	38	0	0	70
Dumfriesshire, Clydesdale and Tweeddale	47	9	8	0	0	36	0	0	72
Dundee East	27	14	8	0	0	48	0	2	66
Dundee West	16	27	6	4	0	44	0	2	60
Dunfermline and West Fife	25	28	9	0	3	35	0	0	67
East Dunbartonshire	13	6	42	0	2	35	0	1	78
East Kilbride, Strathaven and Lesmahagow	25	23	6	0	2	42	0	2	67
East Lothian	26	35	7	0	0	31	0	1	71
East Renfrewshire	39	12	10	0	0	40	0	0	76
Edinburgh East	16	28	8	0	5	43	0	0	66
Edinburgh North and Leith	22	23	10	1	5	39	0	1	70
Edinburgh South	16	50	8	0	3	23	0	0	74
Edinburgh South West	28	12	11	2	4	42	0	1	71
Edinburgh West	17	8	41	0	3	30	0	0	75
Na h-Eileanan an Iar	18	29	4	0	0	48	0	0	69
Falkirk	31	11	7	0	3	47	0	0	68
Glasgow Central	11	30	9	0	5	45	0	0	58
Glasgow East	16	39	5	0	0	39	0	0	52
Glasgow North	13	26	8	2	6	45	0	0	62
Glasgow North East	11	41	3	0	0	45	0	0	52
Glasgow North West	15	29	8	0	0	48	0	0	60
Glasgow South	15	28	6	2	3	46	0	0	64

	Con	Lab	LD	Brexit	Green	SNP	PC	Other	Turnout
Glasgow South West	15	32	5	3	0	45	0	0	56
Glenrothes	21	23	6	3	0	47	0	0	61
Gordon	40	7	13	0	0	41	0	0	70
Inverclyde	19	32	6	0	0	43	0	0	66
Inverness, Nairn, Badenoch and Strathspey	27	8	12	3	3	47	0	0	68
Kilmarnock and Loudoun	28	17	6	0	0	47	0	2	63
Kirkcaldy and Cowdenbeath	22	37	5	3	4	29	0	0	65
Lanark and Hamilton East	36	21	7	0	0	35	0	0	66
Linlithgow and East Falkirk	27	20	7	3	3	38	0	2	67
Livingston	24	24	6	0	2	44	0	0	66
Midlothian	23	35	5	0	0	37	0	0	67
Moray	45	4	4	0	0	45	0	1	67
Motherwell and Wishaw	19	33	5	0	0	41	0	2	63
North Ayrshire and Arran	32	14	6	0	3	45	0	0	66
North East Fife	21	7	36	0	0	36	0	0	70
Ochil and South Perthshire	42	9	6	0	0	42	0	1	71
Orkney and Shetland	14	8	40	4	0	32	0	2	69
Paisley and Renfrewshire North	25	24	8	0	0	43	0	0	69
Paisley and Renfrewshire South	21	27	6	0	0	46	0	0	68
Perth and North Perthshire	41	5	8	2	0	44	0	0	75
Ross, Skye and Lochaber	20	6	23	3	0	46	0	2	74
Rutherglen and Hamilton West	16	39	6	0	0	38	0	1	63
Stirling	37	9	7	0	2	45	0	0	73
West Aberdeenshire and Kincardine	44	5	12	0	0	38	0	0	67
West Dunbartonshire	16	32	5	0	3	42	0	2	65
Ynys Mn	28	33	0	8	0	0	30	0	73
Delyn	44	44	4	5	0	0	3	0	73
Alyn and Deeside	42	46	3	6	0	0	3	0	71
Wrexham	44	43	3	5	2	0	4	0	70
Llanelli	29	48	0	9	0	0	14	0	69
Gower	42	49	3	3	0	0	3	0	74
Swansea West	29	53	5	6	0	0	6	0	65
Swansea East	24	54	5	10	2	0	5	0	62
Aberavon	20	47	5	13	3	0	9	3	68
Cardiff Central	18	65	11	4	0	0	0	3	69
Cardiff North	33	52	5	3	2	0	3	1	76
Rhondda	14	48	4	16	3	0	14	0	66
Torfaen	31	46	4	12	2	0	5	0	65
Monmouth	47	38	7	0	2	0	3	2	77
Newport East	36	47	5	7	2	0	3	0	67
Newport West	40	45	4	5	2	0	3	0	69
Arfon	18	31	0	4	0	0	47	0	69
Aberconwy	44	43	5	0	0	0	8	0	71
Clwyd West	49	37	5	0	0	0	9	0	70

	Con	Lab	LD	Brexit	Green	SNP	PC	Other	Turnout
Vale of Clwyd	44	44	4	4	0	0	4	0	68
Dwyfor Meirionnydd	32	12	0	8	0	0	48	0	70
Clwyd South	42	43	4	6	0	0	5	0	69
Montgomeryshire	56	15	27	0	0	0	0	3	71
Ceredigion	21	13	23	8	3	0	31	0	73
Preseli Pembrokeshire	50	42	3	0	0	0	5	0	73
Carmarthen West and Pembrokeshire South	51	38	3	0	0	0	8	0	73
Carmarthen East and Dinefwr	29	20	0	8	0	0	42	0	75
Brecon and Radnorshire	48	13	37	0	0	0	0	2	76
Neath	24	49	3	10	2	0	9	3	70
Cynon Valley	18	46	4	16	0	0	12	3	62
Merthyr Tydfil and Rhymney	18	50	4	15	0	0	9	3	64
Blaenau Gwent	19	46	4	18	3	0	9	0	65
Bridgend	41	45	4	5	2	0	4	0	71
Ogmore	25	50	4	12	3	0	7	0	66
Pontypridd	26	48	0	8	0	0	14	4	67
Caerphilly	24	46	0	13	0	0	17	0	67
Islwyn	25	48	4	14	2	0	7	0	67
Vale of Glamorgan	47	45	0	0	6	0	0	2	72
Cardiff West	27	52	5	5	2	0	9	0	69
Cardiff South and Penarth	27	52	5	6	3	0	7	0	65

SEAT GAINS/LOSSES

Conservative gains/losses

Table 22: Possible Con gains

Constituency	Win17	P(ConWin)	Con	Lab	LD	Brexit	Green	SNP	PC	Other
North Norfolk	LD	99%	51	6	36	6	0	0	0	0
Barrow and Furness	Lab	99%	51	37	4	6	2	0	0	0
Derby North	Lab	98%	50	37	6	4	2	0	0	2
Penistone and Stocksbridge	Lab	96%	46	36	8	10	0	0	0	0
Ashfield	Lab	93%	44	35	4	10	2	0	0	5
Eastbourne	LD	92%	49	5	39	5	0	0	0	1
Don Valley	Lab	90%	44	36	4	12	2	0	0	2
Wakefield	Lab	90%	47	39	4	8	0	0	0	2
Newcastle-under-Lyme	Lab	88%	46	39	6	7	2	0	0	0
Bassetlaw	Lab	88%	45	38	5	12	0	0	0	0
Dudley North	Lab	88%	51	41	3	0	2	0	0	3
Peterborough	Lab	87%	48	40	4	4	2	0	0	1
Colne Valley	Lab	85%	47	41	5	4	2	0	0	1
Darlington	Lab	84%	45	39	5	7	2	0	0	2
Bury South	Lab	82%	47	40	4	4	2	0	0	3
Rother Valley	Lab	81%	41	36	4	15	2	0	0	2
Bishop Auckland	Lab	81%	47	42	3	8	0	0	0	0
Wolverhampton North East	Lab	77%	46	41	4	7	2	0	0	0
Blackpool South	Lab	77%	44	39	3	11	2	0	0	1
Stoke-on-Trent North	Lab	76%	45	40	3	8	2	0	0	2
West Bromwich West	Lab	75%	43	38	4	12	2	0	0	0
Scunthorpe	Lab	73%	45	41	4	9	2	0	0	0
Crewe and Nantwich	Lab	68%	46	43	4	4	2	0	0	1
Ipswich	Lab	68%	46	43	4	5	2	0	0	1
Keighley	Lab	66%	46	44	4	4	0	0	0	1
Bolsover	Lab	63%	41	39	4	12	2	0	0	2
Sedgefield	Lab	59%	40	39	5	12	2	0	0	2
Dagenham and Rainham	Lab	58%	42	41	4	10	2	0	0	1
Great Grimsby	Lab	57%	42	41	3	11	2	0	0	2
Lanark and Hamilton East	SNP	56%	36	21	7	0	0	35	0	0
Vale of Clwyd	Lab	53%	44	44	4	4	0	0	4	0
Wrexham	Lab	51%	44	43	3	5	2	0	4	0
Bedford	Lab	51%	43	43	8	3	3	0	0	0
Delyn	Lab	51%	44	44	4	5	0	0	3	0
Stockton South	Lab	48%	45	45	4	6	0	0	0	0
Wolverhampton South West	Lab	47%	46	46	4	4	0	0	0	0
Bolton North East	Lab	46%	44	44	4	6	2	0	0	0
Kensington	Lab	44%	36	38	21	2	2	0	0	1

Constituency	Win17	P(ConWin)	Con	Lab	LD	Brexit	Green	SNP	PC	Other
Lincoln	Lab	44%	44	45	3	5	1	0	0	1
Bradford South	Lab	43%	41	42	5	9	2	0	0	0
Gedling	Lab	41%	43	44	6	6	2	0	0	0
Clwyd South	Lab	41%	42	43	4	6	0	0	5	0
Bury North	Lab	41%	43	45	4	6	2	0	0	0
Warrington South	Lab	40%	44	45	5	4	0	0	0	1
Worsley and Eccles South	Lab	38%	41	43	5	7	3	0	0	0
Central Ayrshire	SNP	37%	37	16	7	0	0	40	0	0
Workington	Lab	36%	41	43	4	8	2	0	0	1
Hyndburn	Lab	35%	41	43	3	10	2	0	0	0
Dewsbury	Lab	35%	43	45	4	5	2	0	0	1
Stoke-on-Trent Central	Lab	34%	41	43	4	10	2	0	0	0
Perth and North Perthshire	SNP	34%	41	5	8	2	0	44	0	0
Birmingham, Northfield	Lab	33%	41	44	6	6	2	0	0	1
Stroud	Lab	32%	44	48	0	3	5	0	0	2
Coventry North West	Lab	30%	41	45	6	6	2	0	0	0
Bridgend	Lab	29%	41	45	4	5	2	0	4	0
Leigh	Lab	28%	39	43	5	11	0	0	0	2
West Bromwich East	Lab	28%	39	44	5	8	2	0	0	2
Alyn and Deeside	Lab	25%	42	46	3	6	0	0	3	0
Warwick and Leamington	Lab	24%	42	46	6	2	2	0	0	1
Argyll and Bute	SNP	24%	35	7	18	0	0	40	0	0
Redcar	Lab	24%	35	40	7	14	3	0	0	2
Newport West	Lab	22%	40	45	4	5	2	0	3	0
Weaver Vale	Lab	20%	42	47	5	4	2	0	0	0
North West Durham	Lab	20%	36	41	7	11	2	0	0	2
Batley and Spen	Lab	19%	39	44	5	7	2	0	0	3
Walsall South	Lab	18%	39	45	4	7	2	0	0	2
Coventry South	Lab	18%	39	45	6	5	2	0	0	2
Halifax	Lab	18%	39	45	4	9	2	0	0	0
Stalybridge and Hyde	Lab	16%	39	45	4	7	3	0	0	2
High Peak	Lab	15%	41	47	6	4	2	0	0	0
Burnley	Lab	14%	33	40	8	15	2	0	0	2
Ynys Mn	Lab	13%	28	33	0	8	0	0	30	0
Lancaster and Fleetwood	Lab	13%	40	47	4	7	3	0	0	0
Gower	Lab	13%	42	49	3	3	0	0	3	0
Chesterfield	Lab	12%	36	44	7	9	2	0	0	2
Westmorland and Lonsdale	LD	12%	42	4	51	3	0	0	0	0
Oldham East and Saddleworth	Lab	12%	37	45	5	9	2	0	0	2
Stockton North	Lab	11%	36	44	4	13	0	0	0	2
Hartlepool	Lab	10%	31	39	5	22	0	0	0	2
Heywood and Middleton	Lab	10%	36	45	4	12	2	0	0	0

Table 23: Possible Con losses

Constituency	Win17	P(ConWin)	Con	Lab	LD	Brexit	Green	SNP	PC	Other
Richmond Park	Con	2%	40	5	54	0	0	0	0	1
St Albans	Con	4%	38	9	50	0	2	0	0	1
Stirling	Con	14%	37	9	7	0	2	45	0	0
Putney	Con	28%	37	40	19	0	4	0	0	0
Chipping Barnet	Con	28%	41	45	11	0	2	0	0	1
South Cambridgeshire	Con	28%	41	14	45	0	0	0	0	0
Angus	Con	38%	43	5	6	0	0	46	0	0
Winchester	Con	43%	46	5	47	0	0	0	0	2
East Renfrewshire	Con	44%	39	12	10	0	0	40	0	0
Gordon	Con	45%	40	7	13	0	0	41	0	0
Ochil and South Perthshire	Con	49%	42	9	6	0	0	42	0	1
Moray	Con	49%	45	4	4	0	0	45	0	1
East Devon	Con	53%	47	3	2	0	1	0	0	47
Aberdeen South	Con	54%	40	11	11	0	0	39	0	0
Aberconwy	Con	57%	44	43	5	0	0	0	8	0
Esher and Walton	Con	58%	46	8	44	0	0	0	0	2
Hendon	Con	59%	45	43	10	0	2	0	0	0
Ayr, Carrick and Cumnock	Con	60%	42	12	6	0	0	40	0	0
Banff and Buchan	Con	61%	47	4	5	0	0	45	0	0
Cheltenham	Con	62%	47	6	45	0	0	0	0	2
Vale of Glamorgan	Con	63%	47	45	0	0	6	0	0	2
Chingford and Woodford Green	Con	65%	47	45	8	0	0	0	0	0
Milton Keynes North	Con	65%	47	45	5	0	3	0	0	0
Harrow East	Con	66%	45	43	10	0	2	0	0	0
Norwich North	Con	67%	46	43	7	0	2	0	0	2
Hastings and Rye	Con	72%	47	44	7	0	0	0	0	2
Reading West	Con	73%	46	42	9	0	3	0	0	0
Wokingham	Con	74%	46	9	41	0	3	0	0	2
Guildford	Con	74%	44	10	39	0	0	0	0	7
Cheadle	Con	76%	48	9	43	0	0	0	0	0
West Aberdeenshire and Kincardine	Con	77%	44	5	12	0	0	38	0	0
Milton Keynes South	Con	78%	48	43	6	0	2	0	0	2
Shipley	Con	79%	48	43	6	0	2	0	0	2
South Swindon	Con	81%	50	44	6	0	0	0	0	0
St Ives	Con	82%	47	8	41	0	2	0	0	2
Cities of London and Westminster	Con	82%	38	25	32	0	3	0	0	1
Lewes	Con	83%	48	6	42	0	3	0	0	2
Broxtowe	Con	84%	46	39	0	0	3	0	0	12
Dumfries and Galloway	Con	84%	46	10	6	0	0	38	0	0
Morecambe and Lunesdale	Con	85%	48	42	6	0	2	0	0	2
Loughborough	Con	85%	47	41	7	0	3	0	0	2
Wycombe	Con	85%	45	39	11	0	3	0	0	2

Constituency	Win17	P(ConWin)	Con	Lab	LD	Brexit	Green	SNP	PC	Other
Pudsey	Con	87%	49	42	5	0	2	0	0	2
Crawley	Con	88%	49	42	7	0	3	0	0	0
Preseli Pembrokeshire	Con	89%	50	42	3	0	0	0	5	0
Southampton, Itchen	Con	89%	49	40	7	0	3	0	0	2
Dumfriesshire, Clydesdale and Tweeddale	Con	89%	47	9	8	0	0	36	0	0
Wells	Con	89%	50	7	42	0	0	0	0	2
Truro and Falmouth	Con	90%	46	38	11	0	2	0	0	2

Table 24: Possible Lab gains

Constituency	Win17	P(LabWin)	Con	Lab	LD	Brexit	Green	SNP	PC	Other
Putney	Con	72%	37	40	19	0	4	0	0	0
Chipping Barnet	Con	72%	41	45	11	0	2	0	0	1
Glasgow East	SNP	49%	16	39	5	0	0	39	0	0
Aberconwy	Con	43%	44	43	5	0	0	0	8	0
Hendon	Con	41%	45	43	10	0	2	0	0	0
Vale of Glamorgan	Con	37%	47	45	0	0	6	0	0	2
Chingford and Woodford Green	Con	35%	47	45	8	0	0	0	0	0
Milton Keynes North	Con	35%	47	45	5	0	3	0	0	0
Harrow East	Con	34%	45	43	10	0	2	0	0	0
Norwich North	Con	33%	46	43	7	0	2	0	0	2
Hastings and Rye	Con	28%	47	44	7	0	0	0	0	2
Airdrie and Shotts	SNP	27%	22	33	5	0	2	38	0	0
Reading West	Con	27%	46	42	9	0	3	0	0	0
Milton Keynes South	Con	22%	48	43	6	0	2	0	0	2
Shipley	Con	21%	48	43	6	0	2	0	0	2
South Swindon	Con	19%	50	44	6	0	0	0	0	0
Motherwell and Wishaw	SNP	18%	19	33	5	0	0	41	0	2
Dunfermline and West Fife	SNP	16%	25	28	9	0	3	35	0	0
Broxtowe	Con	16%	46	39	0	0	3	0	0	12
Morecambe and Lunesdale	Con	15%	48	42	6	0	2	0	0	2
Loughborough	Con	15%	47	41	7	0	3	0	0	2
Wycombe	Con	15%	45	39	11	0	3	0	0	2
Pudsey	Con	13%	49	42	5	0	2	0	0	2
West Dunbartonshire	SNP	12%	16	32	5	0	3	42	0	2
Crawley	Con	12%	49	42	7	0	3	0	0	0
Inverclyde	SNP	11%	19	32	6	0	0	43	0	0
Preseli Pembrokeshire	Con	11%	50	42	3	0	0	0	5	0
Southampton, Itchen	Con	11%	49	40	7	0	3	0	0	2
Truro and Falmouth	Con	10%	46	38	11	0	2	0	0	2

Table 25: Possible Lab losses

Constituency	Win17	P(LabWin)	Con	Lab	LD	Brexit	Green	SNP	PC	Other
Chorley	Lab	0%	0	0	0	0	15	0	0	85
Barrow and Furness	Lab	1%	51	37	4	6	2	0	0	0
Derby North	Lab	2%	50	37	6	4	2	0	0	2
Penistone and Stocksbridge	Lab	4%	46	36	8	10	0	0	0	0
Ashfield	Lab	7%	44	35	4	10	2	0	0	5
Don Valley	Lab	10%	44	36	4	12	2	0	0	2

Constituency	Win17	P(LabWin)	Con	Lab	LD	Brexit	Green	SNP	PC	Other
Wakefield	Lab	10%	47	39	4	8	0	0	0	2
Newcastle-under-Lyme	Lab	12%	46	39	6	7	2	0	0	0
Bassetlaw	Lab	12%	45	38	5	12	0	0	0	0
Dudley North	Lab	12%	51	41	3	0	2	0	0	3
Peterborough	Lab	13%	48	40	4	4	2	0	0	1
Colne Valley	Lab	15%	47	41	5	4	2	0	0	1
Darlington	Lab	16%	45	39	5	7	2	0	0	2
Bury South	Lab	18%	47	40	4	4	2	0	0	3
Rother Valley	Lab	19%	41	36	4	15	2	0	0	2
Bishop Auckland	Lab	19%	47	42	3	8	0	0	0	0
Wolverhampton North East	Lab	23%	46	41	4	7	2	0	0	0
Blackpool South	Lab	23%	44	39	3	11	2	0	0	1
Stoke-on-Trent North	Lab	24%	45	40	3	8	2	0	0	2
Sheffield, Hallam	Lab	24%	23	32	36	5	3	0	0	2
West Bromwich West	Lab	25%	43	38	4	12	2	0	0	0
Scunthorpe	Lab	27%	45	41	4	9	2	0	0	0
Crewe and Nantwich	Lab	32%	46	43	4	4	2	0	0	1
Ipswich	Lab	32%	46	43	4	5	2	0	0	1
Glasgow North East	Lab	32%	11	41	3	0	0	45	0	0
Keighley	Lab	34%	46	44	4	4	0	0	0	1
Bolsover	Lab	37%	41	39	4	12	2	0	0	2
Midlothian	Lab	38%	23	35	5	0	0	37	0	0
Sedgefield	Lab	41%	40	39	5	12	2	0	0	2
Dagenham and Rainham	Lab	42%	42	41	4	10	2	0	0	1
Great Grimsby	Lab	43%	42	41	3	11	2	0	0	2
Vale of Clwyd	Lab	47%	44	44	4	4	0	0	4	0
Wrexham	Lab	49%	44	43	3	5	2	0	4	0
Bedford	Lab	49%	43	43	8	3	3	0	0	0
Delyn	Lab	49%	44	44	4	5	0	0	3	0
Stockton South	Lab	52%	45	45	4	6	0	0	0	0
Ynys Mn	Lab	53%	28	33	0	8	0	0	30	0
Wolverhampton South West	Lab	53%	46	46	4	4	0	0	0	0
Bolton North East	Lab	54%	44	44	4	6	2	0	0	0
Kensington	Lab	56%	36	38	21	2	2	0	0	1
Rutherglen and Hamilton West	Lab	56%	16	39	6	0	0	38	0	1
Lincoln	Lab	56%	44	45	3	5	1	0	0	1
Bradford South	Lab	57%	41	42	5	9	2	0	0	0
Gedling	Lab	59%	43	44	6	6	2	0	0	0
Clwyd South	Lab	59%	42	43	4	6	0	0	5	0
Bury North	Lab	59%	43	45	4	6	2	0	0	0
Warrington South	Lab	60%	44	45	5	4	0	0	0	1
Worsley and Eccles South	Lab	62%	41	43	5	7	3	0	0	0
Workington	Lab	64%	41	43	4	8	2	0	0	1
Hyndburn	Lab	65%	41	43	3	10	2	0	0	0

Constituency	Win17	P(LabWin)	Con	Lab	LD	Brexit	Green	SNP	PC	Other
Dewsbury	Lab	65%	43	45	4	5	2	0	0	1
Stoke-on-Trent Central	Lab	66%	41	43	4	10	2	0	0	0
Birmingham, Northfield	Lab	67%	41	44	6	6	2	0	0	1
Stroud	Lab	68%	44	48	0	3	5	0	0	2
East Lothian	Lab	69%	26	35	7	0	0	31	0	1
Coatbridge, Chryston and Bellshill	Lab	70%	12	44	3	0	1	39	0	0
Coventry North West	Lab	70%	41	45	6	6	2	0	0	0
Bridgend	Lab	71%	41	45	4	5	2	0	4	0
Leigh	Lab	72%	39	43	5	11	0	0	0	2
West Bromwich East	Lab	72%	39	44	5	8	2	0	0	2
Alyn and Deeside	Lab	75%	42	46	3	6	0	0	3	0
Warwick and Leamington	Lab	76%	42	46	6	2	2	0	0	1
Redcar	Lab	76%	35	40	7	14	3	0	0	2
Newport West	Lab	78%	40	45	4	5	2	0	3	0
Weaver Vale	Lab	80%	42	47	5	4	2	0	0	0
North West Durham	Lab	80%	36	41	7	11	2	0	0	2
Batley and Spennings	Lab	81%	39	44	5	7	2	0	0	3
Walsall South	Lab	82%	39	45	4	7	2	0	0	2
Coventry South	Lab	82%	39	45	6	5	2	0	0	2
Halifax	Lab	82%	39	45	4	9	2	0	0	0
Stalybridge and Hyde	Lab	84%	39	45	4	7	3	0	0	2
Kirkcaldy and Cowdenbeath	Lab	84%	22	37	5	3	4	29	0	0
High Peak	Lab	85%	41	47	6	4	2	0	0	0
Burnley	Lab	86%	33	40	8	15	2	0	0	2
Lancaster and Fleetwood	Lab	87%	40	47	4	7	3	0	0	0
Gower	Lab	87%	42	49	3	3	0	0	3	0
Chesterfield	Lab	88%	36	44	7	9	2	0	0	2
Oldham East and Saddleworth	Lab	88%	37	45	5	9	2	0	0	2
Stockton North	Lab	89%	36	44	4	13	0	0	0	2
Hartlepool	Lab	89%	31	39	5	22	0	0	0	2
Heywood and Middleton	Lab	90%	36	45	4	12	2	0	0	0

Table 26: Possible LD gains

Constituency	Win17	P(LDWin)	Con	Lab	LD	Brexit	Green	SNP	PC	Other
Richmond Park	Con	98%	40	5	54	0	0	0	0	1
St Albans	Con	96%	38	9	50	0	2	0	0	1
Sheffield, Hallam	Lab	75%	23	32	36	5	3	0	0	2
South Cambridgeshire	Con	72%	41	14	45	0	0	0	0	0
Winchester	Con	57%	46	5	47	0	0	0	0	2
North East Fife	SNP	49%	21	7	36	0	0	36	0	0
Esher and Walton	Con	42%	46	8	44	0	0	0	0	2
Cheltenham	Con	38%	47	6	45	0	0	0	0	2
Wokingham	Con	26%	46	9	41	0	3	0	0	2
Guildford	Con	26%	44	10	39	0	0	0	0	7
Cheadle	Con	24%	48	9	43	0	0	0	0	0
St Ives	Con	18%	47	8	41	0	2	0	0	2
Lewes	Con	17%	48	6	42	0	3	0	0	2
Cities of London and Westminster	Con	17%	38	25	32	0	3	0	0	1
Ceredigion	PC	12%	21	13	23	8	3	0	31	0
Wells	Con	11%	50	7	42	0	0	0	0	2

Table 27: Possible LD losses

Constituency	Win17	P(LDWin)	Con	Lab	LD	Brexit	Green	SNP	PC	Other
North Norfolk	LD	1%	51	6	36	6	0	0	0	0
Eastbourne	LD	8%	49	5	39	5	0	0	0	1
East Dunbartonshire	LD	79%	13	6	42	0	2	35	0	1
Orkney and Shetland	LD	83%	14	8	40	4	0	32	0	2
Caithness, Sutherland and Easter Ross	LD	85%	18	4	41	5	0	32	0	0
Westmorland and Lonsdale	LD	88%	42	4	51	3	0	0	0	0
Edinburgh West	LD	90%	17	8	41	0	3	30	0	0

Table 28: Possible SNP gains

Constituency	Win17	P(SNPWin)	Con	Lab	LD	Brexit	Green	SNP	PC	Other
Stirling	Con	86%	37	9	7	0	2	45	0	0
Glasgow North East	Lab	68%	11	41	3	0	0	45	0	0
Midlothian	Lab	62%	23	35	5	0	0	37	0	0
Angus	Con	62%	43	5	6	0	0	46	0	0
East Renfrewshire	Con	56%	39	12	10	0	0	40	0	0
Gordon	Con	55%	40	7	13	0	0	41	0	0
Ochil and South Perthshire	Con	51%	42	9	6	0	0	42	0	1
Moray	Con	51%	45	4	4	0	0	45	0	1
Aberdeen South	Con	46%	40	11	11	0	0	39	0	0
Rutherglen and Hamilton West	Lab	44%	16	39	6	0	0	38	0	1
Ayr, Carrick and Cumnock	Con	40%	42	12	6	0	0	40	0	0
Banff and Buchan	Con	39%	47	4	5	0	0	45	0	0
Coatbridge, Chryston and Bellshill	Lab	30%	12	44	3	0	1	39	0	0
East Lothian	Lab	28%	26	35	7	0	0	31	0	1
West Aberdeenshire and Kincardine	Con	23%	44	5	12	0	0	38	0	0
East Dunbartonshire	LD	21%	13	6	42	0	2	35	0	1
Orkney and Shetland	LD	17%	14	8	40	4	0	32	0	2
Dumfries and Galloway	Con	16%	46	10	6	0	0	38	0	0
Kirkcaldy and Cowdenbeath	Lab	15%	22	37	5	3	4	29	0	0
Caithness, Sutherland and Easter Ross	LD	15%	18	4	41	5	0	32	0	0
Dumfriesshire, Clydesdale and Tweeddale	Con	11%	47	9	8	0	0	36	0	0
Edinburgh West	LD	10%	17	8	41	0	3	30	0	0

Table 29: Possible SNP losses

Constituency	Win17	P(SNPWin)	Con	Lab	LD	Brexit	Green	SNP	PC	Other
Lanark and Hamilton East	SNP	44%	36	21	7	0	0	35	0	0
North East Fife	SNP	51%	21	7	36	0	0	36	0	0
Glasgow East	SNP	51%	16	39	5	0	0	39	0	0
Central Ayrshire	SNP	63%	37	16	7	0	0	40	0	0
Perth and North Perthshire	SNP	66%	41	5	8	2	0	44	0	0
Airdrie and Shotts	SNP	72%	22	33	5	0	2	38	0	0
Argyll and Bute	SNP	76%	35	7	18	0	0	40	0	0
Dunfermline and West Fife	SNP	81%	25	28	9	0	3	35	0	0
Motherwell and Wishaw	SNP	82%	19	33	5	0	0	41	0	2
West Dunbartonshire	SNP	88%	16	32	5	0	3	42	0	2
Inverclyde	SNP	89%	19	32	6	0	0	43	0	0

Brexit Party gains/losses

Table 30: Possible Brexit gains

Constituency	Win17	P(BrexitWin)	Con	Lab	LD	Brexit	Green	SNP	PC	Other
--------------	-------	--------------	-----	-----	----	--------	-------	-----	----	-------

Table 31: Possible Brexit losses

Constituency	Win17	P(BrexitWin)	Con	Lab	LD	Brexit	Green	SNP	PC	Other
--------------	-------	--------------	-----	-----	----	--------	-------	-----	----	-------

Plaid Cymru gains/losses

Table 32: Possible PC gains

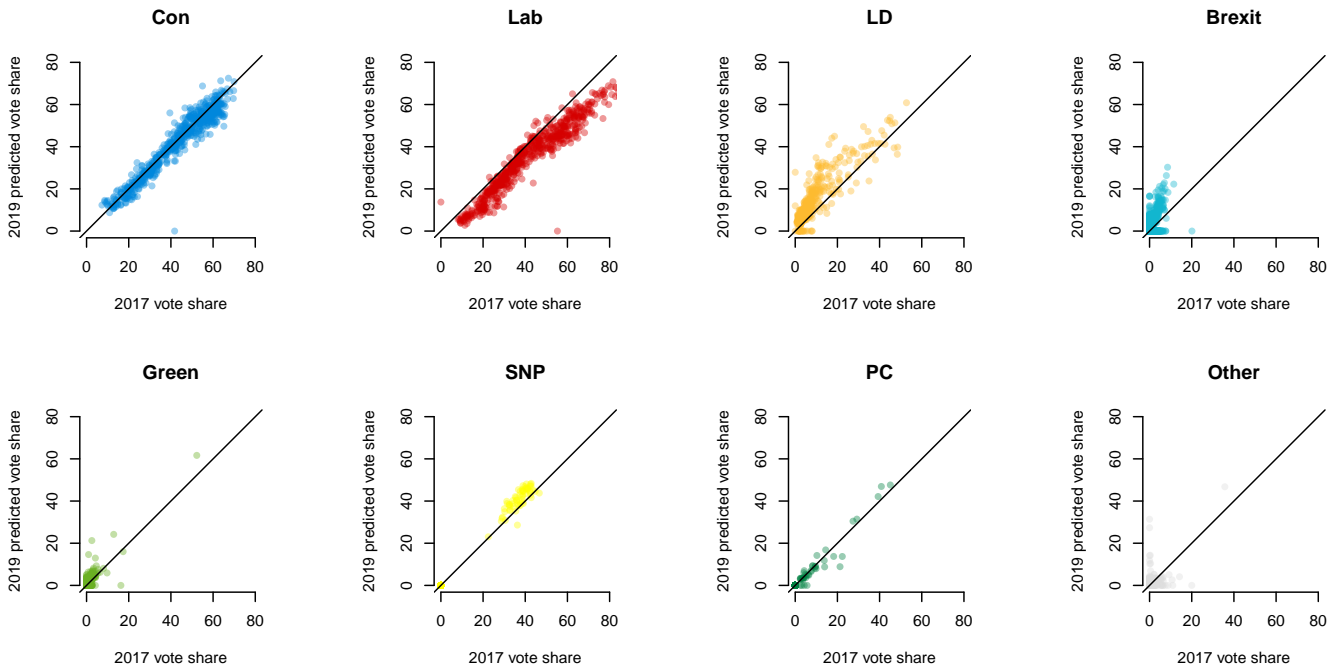
Constituency	Win17	P(PCWin)	Con	Lab	LD	Brexit	Green	SNP	PC	Other
Ynys Mn	Lab	34%	28	33	0	8	0	0	30	0

Table 33: Possible PC losses

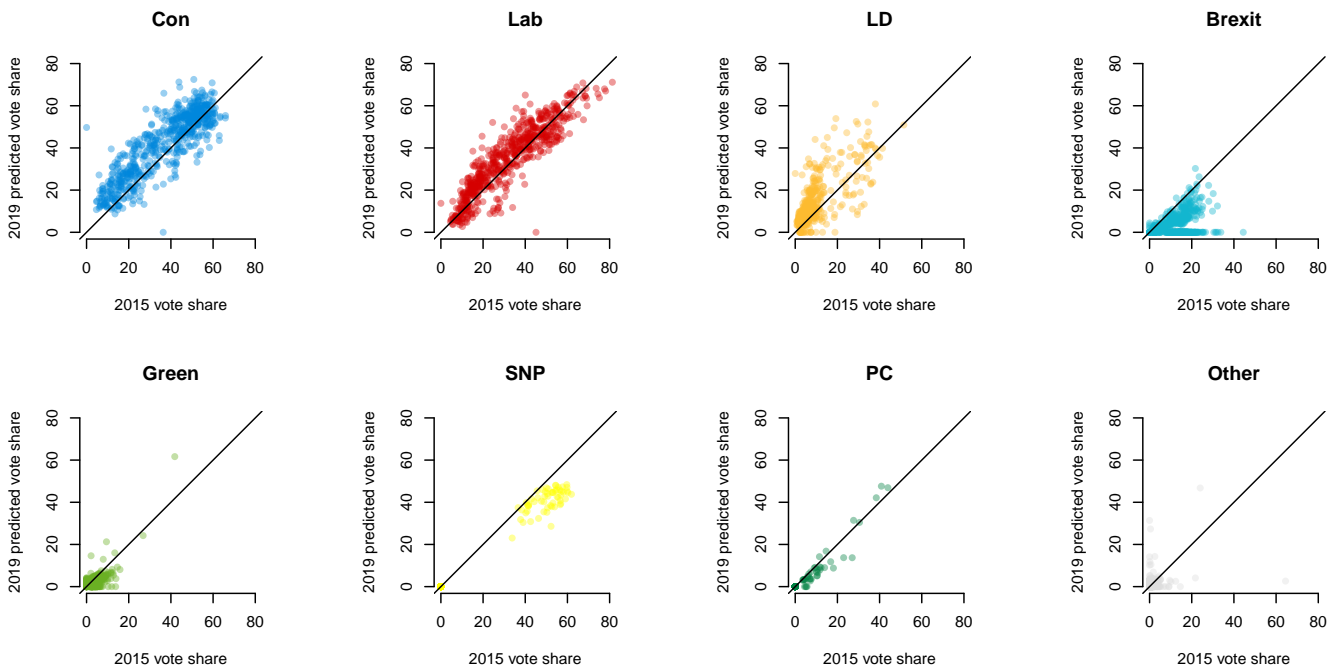
Constituency	Win17	P(PCWin)	Con	Lab	LD	Brexit	Green	SNP	PC	Other
Ceredigion	PC	82%	21	13	23	8	3	0	31	0

FIGURES

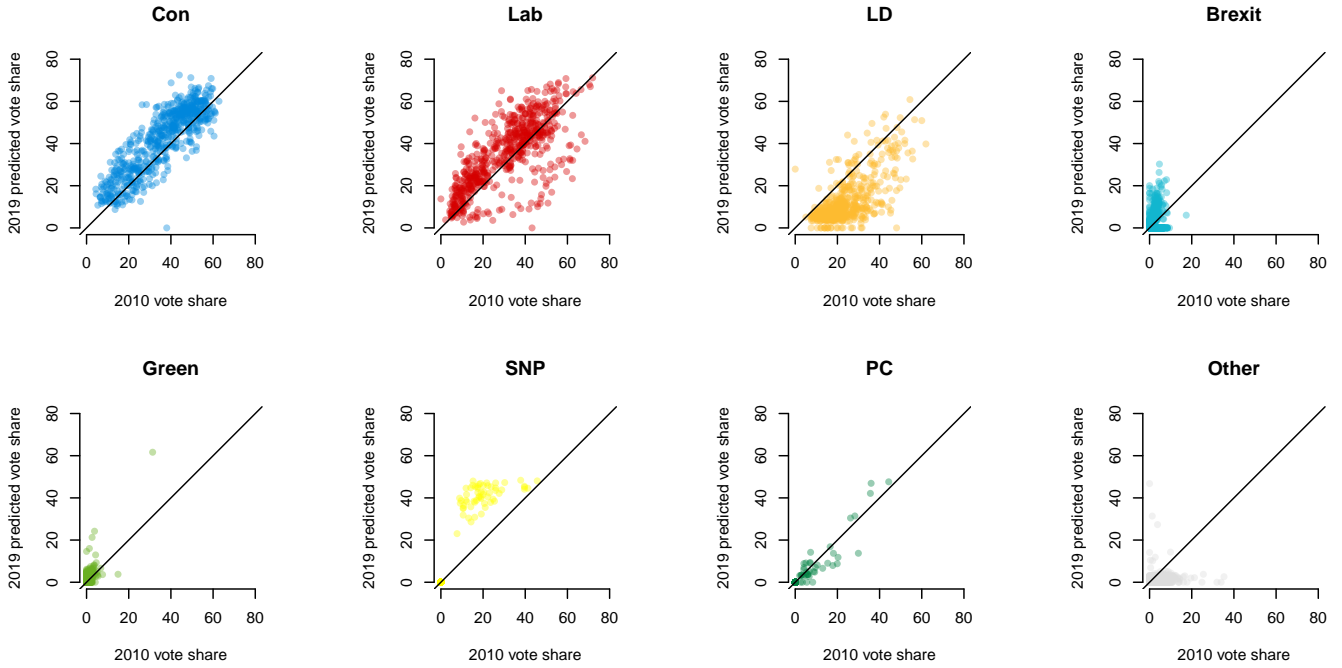
Constituency Vote Share by 2017 Constituency Vote Share



Constituency Vote Share by 2015 Constituency Vote Share

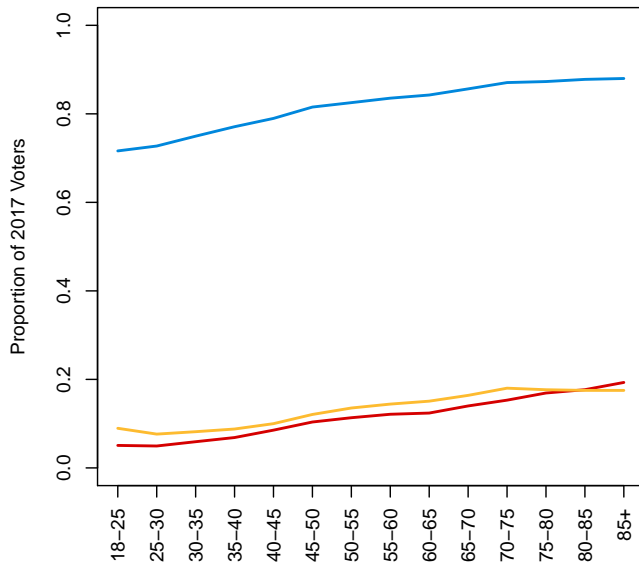


Constituency Vote Share by 2010 Constituency Vote Share

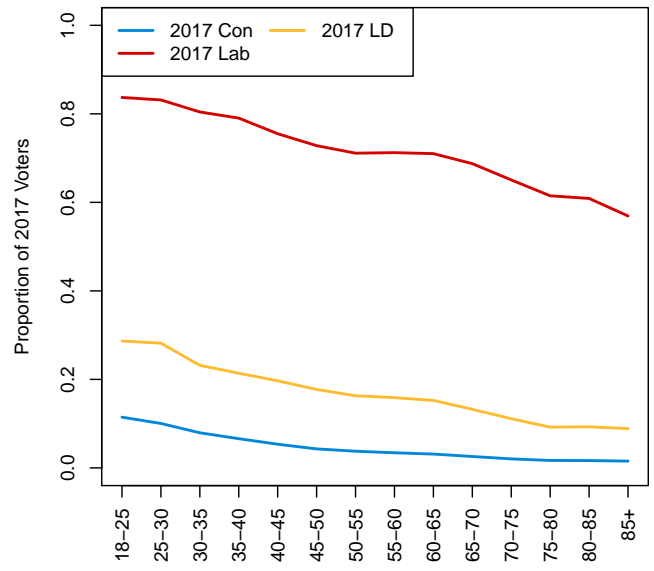


Vote by age and 2017 vote

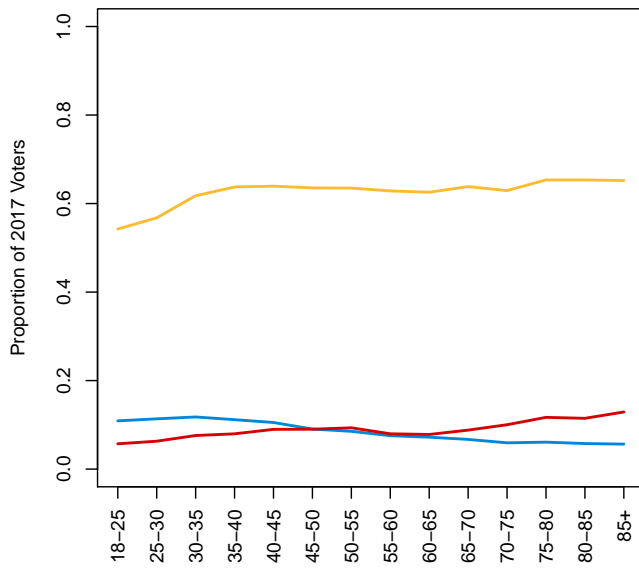
Conservative Vote by Age and 2017 vote



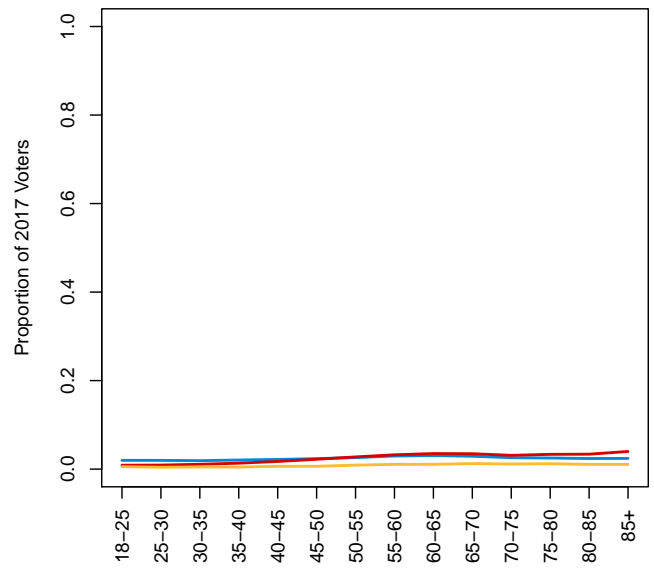
Labour Vote by Age and 2017 vote



LD Vote by Age and 2017 vote

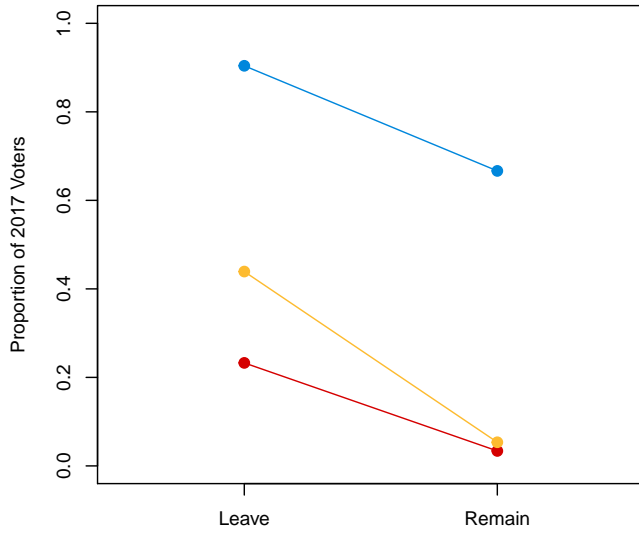


Brexit Party Vote by Age and 2017 vote

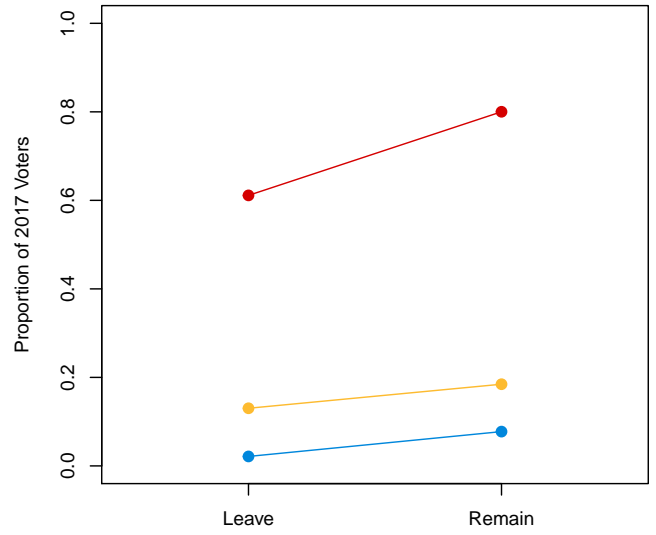


Vote by referendum vote and 2017 vote

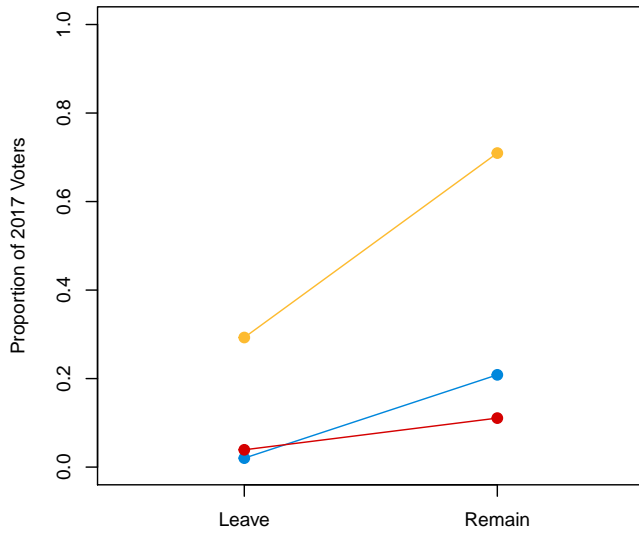
Conservative Vote by EU vote and 2017 vote



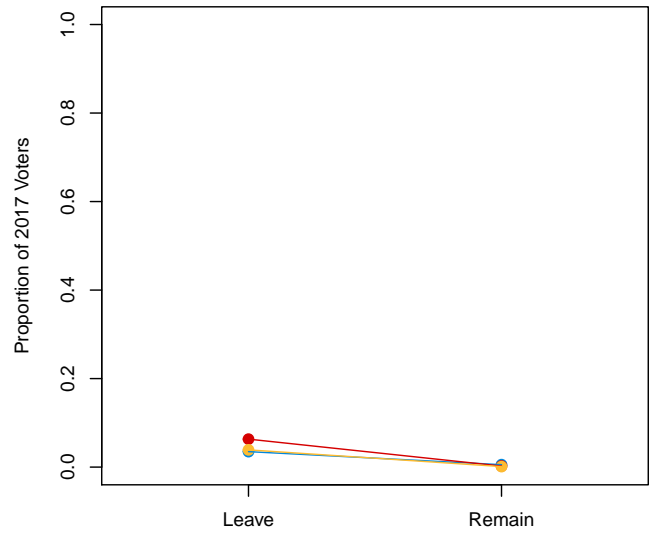
Labour Vote by EU vote and 2017 vote



LD Vote by EU vote and 2017 vote

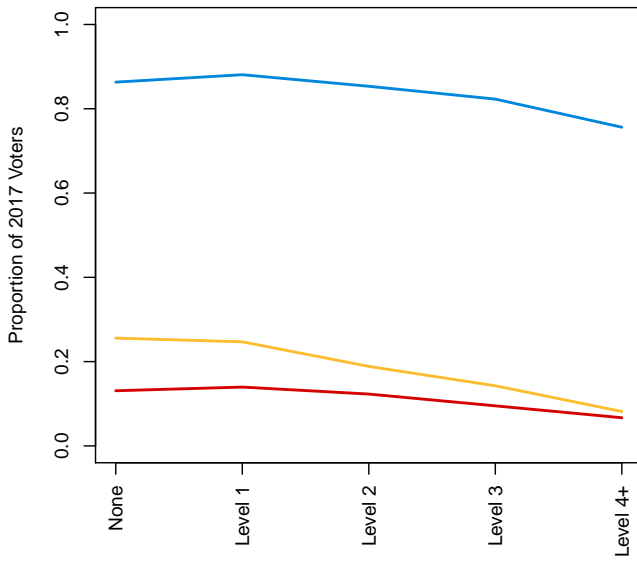


Brexit party Vote by EU vote and 2017 vote

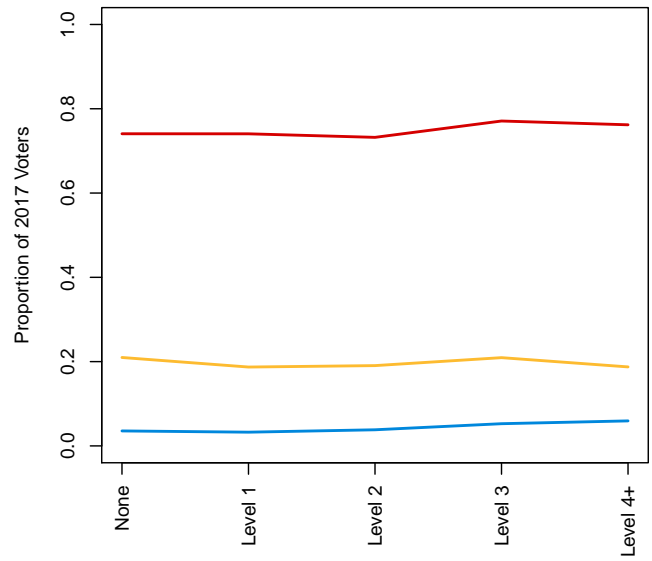


Vote by qualifications and 2017 vote

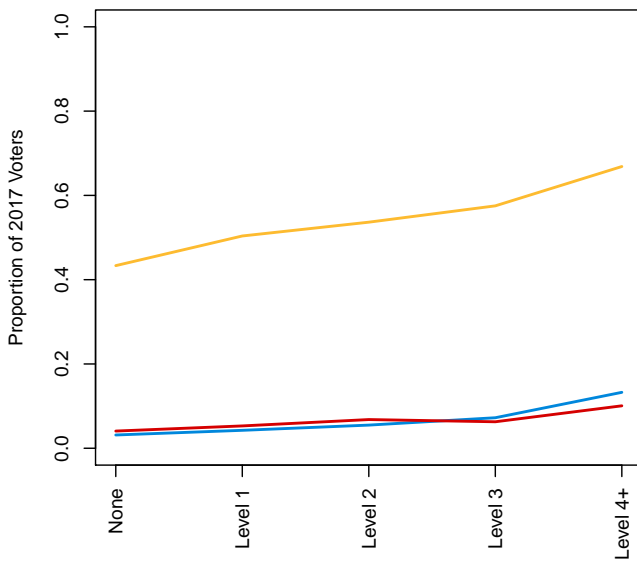
Conservative Vote by Qualifications and 2017 vote



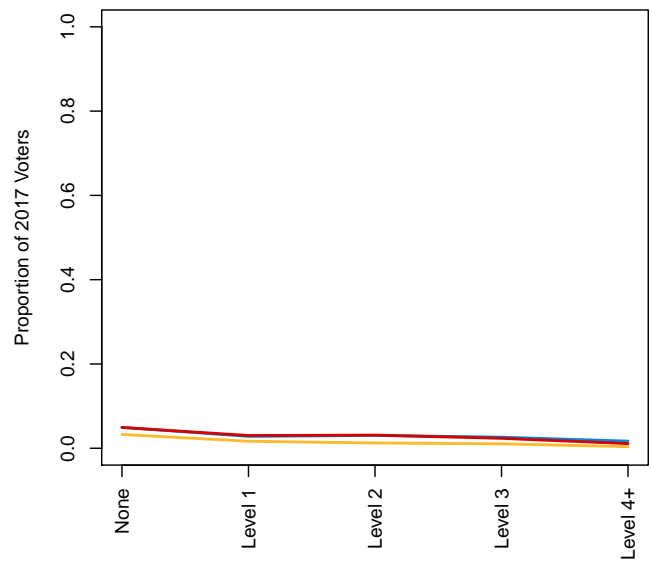
Labour Vote by Qualifications and 2017 vote



LD Vote by Qualifications and 2017 vote



Brexit Party Vote by Qualifications and 2017 vote

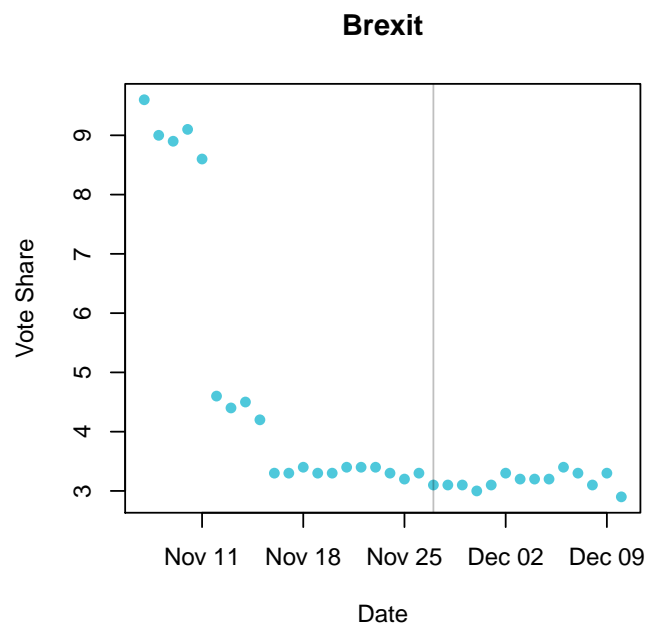
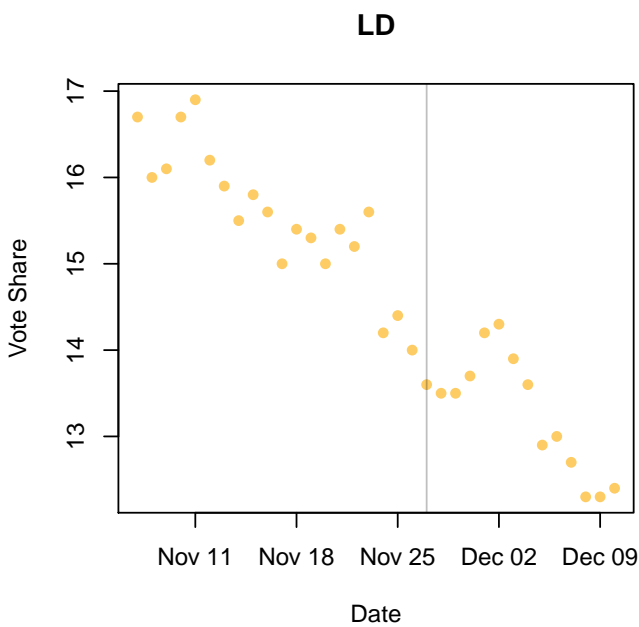
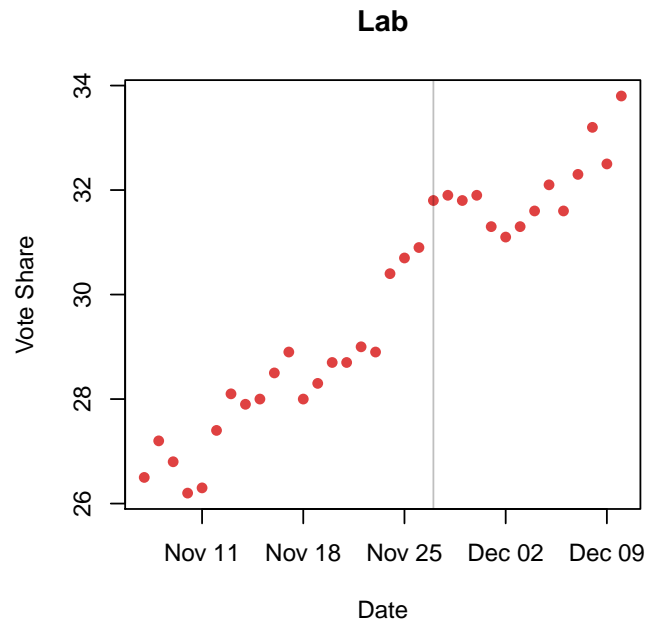
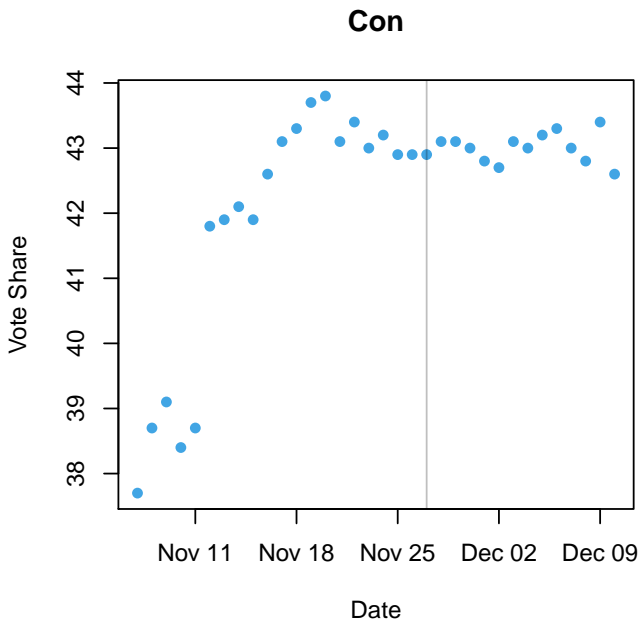


Note: the “Does not apply” and “Other” categories are excluded from this plot. “Does not apply” includes all voters over age 70, regardless of their actual level of qualifications. This is because the Annual Population Survey does not record qualifications for retired individuals past the age of 70. “Other” includes qualifications that are not included on the Register of Regulated Qualifications.

THE CAMPAIGN

The plots on this page and the next page show the evolution of our estimates from the beginning of the campaign. The vertical lines show the dates on which our estimates were publicly released. Note that the model was almost entirely unchanged during this period, with a few minor exceptions. First, the candidates/parties believed to be standing in each constituency were not fixed during the early period of the campaign. Second, variables based on tactical voting advice websites changed during the campaign.

Estimated Vote Shares by Date



Estimated Seats by Date

