

MRP Methodology, Tables and Figures

Prepared for YouGov by

- Benjamin Lauderdale (University College London)
- Jack Blumenau (University College London)

This report provides the final estimate of the electoral situation in the United Kingdom in advance of the general election on 12 December 2019, reported to a client at 9pm on 11 December based on data up to 8am on 11 December.

Contents

METHODS	4
Data Collection	4
Model	4
Turnout Assumptions	5
Survey Questions	5
Uncertainty	5
THE CURRENT ELECTORAL SITUATION	7
National Vote and Seat Estimates	7
Seat Gains/Losses by Party	11
Interval Estimates	11
DEMOGRAPHIC VOTE TABLES	12
Vote by 2017 vote	12
Vote by 2017 vote (Scotland)	13
Vote by 2017 vote (Wales)	13
Vote by 2016 EU referendum vote	14
Vote by 2016 x 2017 vote	15
Vote by 2019 EU parliament election vote	17
Vote by age	18
Vote by gender	19
Vote by qualifications	19
Vote by (self-reported) attention to politics	20
Vote by ethnicity	21
Vote by marital status	21
Vote by region	22
CONSTITUENCY ESTIMATES	23
SEAT GAINS/LOSSES	38
Conservative gains/losses	38
Labour gains/losses	42
Liberal Democrat gains/losses	45
Scottish National Party gains/losses	46
Brexit Party gains/losses	47
Plaid Cymru gains/losses	47
FIGURES	48
Constituency Vote Share by 2017 Constituency Vote Share	48
Constituency Vote Share by 2015 Constituency Vote Share	48
Constituency Vote Share by 2010 Constituency Vote Share	49
Vote by age and 2017 vote	50
Vote by referendum vote and 2017 vote	51
Vote by qualifications and 2017 vote	52

THE CAMPAIGN

53

Estimated Vote Shares by Date 53

Estimated Seats by Date 54

METHODS

Data Collection

A sample of 14857 politically and demographically representative respondents was taken covering the entire UK (excluding Northern Ireland). An additional top-up sample of 92859 respondents was taken from across the YouGov panel. All the analyses below use both samples combined, but adjusting the latter data to match the national levels of the former. The period of data collection used in this report was 2019-12-05 to 2019-12-11. We have an average of 170 observations for the average constituency.

Model

There are not enough observations in individual constituencies to treat the data as separate constituency polls, but we can look for patterns in responses across constituencies that have similar characteristics, and then work out the implications of those patterns for each constituency. This strategy of “multilevel regression and post-stratification” or *MRP* is the same approach we used in the 2017 YouGov election model that correctly predicted the hung parliament and 93% of individual constituency winners.

Our modelling approach proceeds in two steps. First, we build a detailed description of which kinds of people live where in the UK. This “population model” tells us how many people we think voted in different ways in recent elections, are of each age, gender, level of educational qualifications, etc, and all the combinations of these, in each UK parliamentary constituency. The population model is constructed from a number of sources, including past election results, a variety of types of survey data and UK census data.

Second, we use the YouGov survey data described above to build a *survey response model* of current voting intention (or of responses to any of the questions listed below). This is a model of how voting intention is associated with the individual level characteristics that are in our description of the population plus characteristics of parliamentary constituencies. The survey data might indicate that people with different educational qualifications are giving different patterns of responses, or that different parts of the UK are giving different responses, or other similar patterns. The model describes all of these patterns, and allows us to make predictions about how individuals with any combination of characteristics would respond to the survey question.

Once we have these two things, we can systematically go through all the types of people that our population model says exist and use the survey response model to predict vote intention (or any other survey measure) for individuals of each type. For example, our population model tells us that there are some number of women who are 31-35 year-old, with a university degree, who voted Remain in 2016 and Liberal Democrat in 2017, and who live in the Twickenham constituency in London. Our survey response model then gives us a prediction of their survey response (whether vote intention or something else). We can then tally up these predictions for all the individuals that our population model says exist in the UK population, which gives us an estimate for the UK as a whole. Alternatively, we can tally up those predictions for each constituency separately, yielding estimates for every constituency, or by any other characteristic that we have used in the population model (age, gender, qualifications, etc). The survey response model captures the demographic patterns in how people are responding, and then this “post-stratification” step works out the implications given the variable demographic composition of different places (or groups) in the UK.

The models we have developed for this project look for patterns as a function of a number of variables, including individual 2017 vote, referendum vote, sex, age, qualifications, housing tenure, marital status and ethnicity. At the level of constituencies, we look for patterns as a function of the electoral history of the constituency, EU referendum vote, region/country, and several other variables. We also use interactions of these that ensure we are sensitive to local political context. For example, at the 2017 election, young Remain-voting 2015 Conservative voters were more likely to defect to Labour in seats where Labour was stronger and to the Liberal Democrats in seats where the Liberal Democrats were stronger.

Turnout Assumptions

In contrast to traditional polling approaches, we do not rely on respondents' self-reported likelihood of voting when working out probable voting patterns across different constituencies. Instead, we build a model based on data from past elections to predict whether different types of individual would be likely to vote in a new election. The result of this process is that we assume that the electorate for a new election would be demographically similar to the electorates of 2015 and 2017 (which were themselves similar, despite 2017 claims about a "youthquake"). This is the same strategy we used for the 2017 election model. It is not perfect, as it is possible that there will be changes to the demographic make-up of the electorate, but is also unlikely to yield large errors overall.

Survey Questions

The question polled was:

There will be a UK general election on 12 December 2019. The candidates that will stand in your constituency, <CONSTITUENCY NAME>, are not yet known for certain. You may face a choice between the following parties and candidates.

Given these parties and candidates, how do you intend to vote in the upcoming election?

1. Conservative – <CANDIDATE NAME>
2. Labour – <CANDIDATE NAME>
3. Liberal Democrat – <CANDIDATE NAME>
4. Brexit Party – <CANDIDATE NAME>
5. Scottish National Party (SNP) – <CANDIDATE NAME>
6. Plaid Cymru – <CANDIDATE NAME>
7. Green – <CANDIDATE NAME>
8. Independent – <CANDIDATE NAME>
9. Other
10. Will Not vote
11. Don't know

Parties are not listed where they are not standing candidates. The "Other" option was only listed where there were additional candidates not already listed. Only high profile independent candidates were listed. These include all current MPs standing as independents as well as selected others like Claire Wright in East Devon and Jason Zadrozny in Ashfield.

Uncertainty

We do not report explicit intervals of uncertainty around all of the estimates that we provide below because it makes the tables extremely cumbersome to read. It is also important to note that we can only quantify some of the uncertainty that a reader *ought* to have about what the results tell us about what voters actually would do in an electoral situation that resembles that described by the question. The traditional statistical margin of error only includes uncertainty that results from having a limited sample of a population. We provide this for some of the estimates that most closely resemble the current electoral situation. However, as explained above, the estimates presented below are based on multiple models (a population model, a survey response model, a turnout model), and it is very difficult to fully quantify the potential sources of uncertainty that arise in all of these models.

We do not expect to get every seat right, there are too many seats that are very close between two (or more) parties. Given the stated level of uncertainty in our estimates, our best guess is that we will predict 93% of individual seats correctly, with a most likely range of 91% to 95%. Any variation in that range can be ascribed to luck in how individual marginal seats

fall relative to our predictions. If we do worse than that range, it would mean that we were not merely unlucky, but that there were more serious biases in our modelling. If we do better than that range, it would mean that we were not merely lucky, but also underconfident in the quality of our modelling.

THE CURRENT ELECTORAL SITUATION

National Vote and Seat Estimates

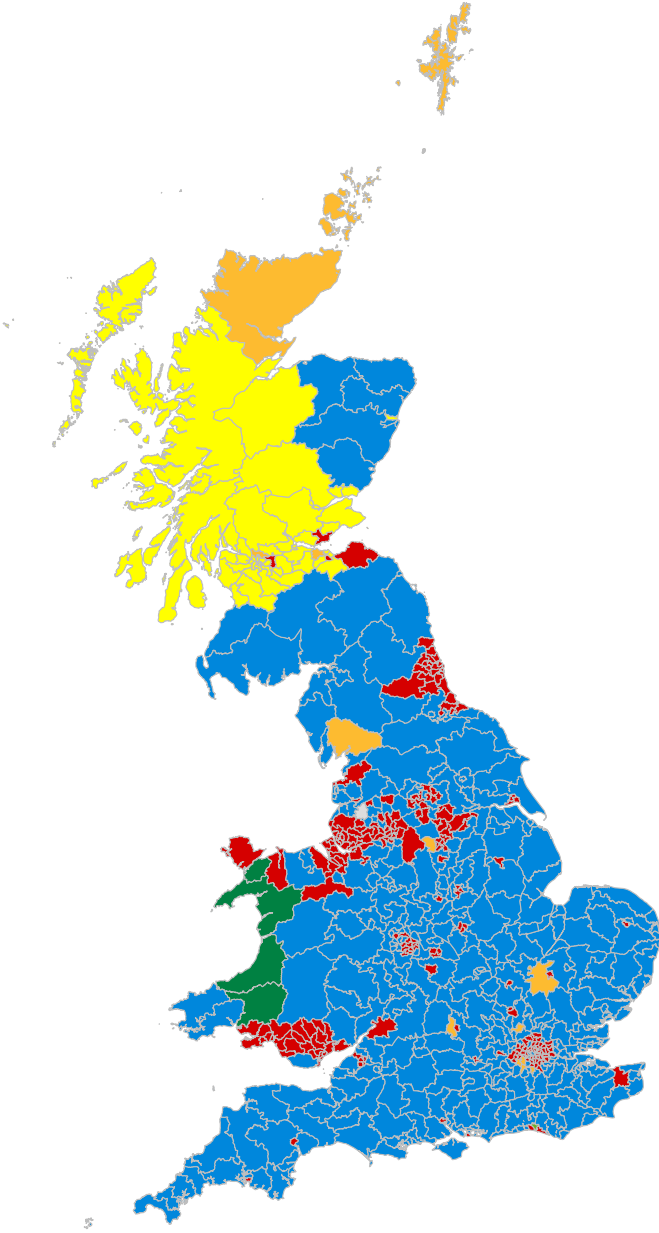
Table 1: Current estimated seat counts

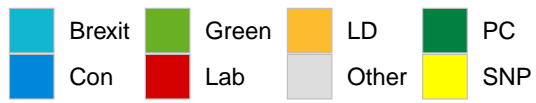
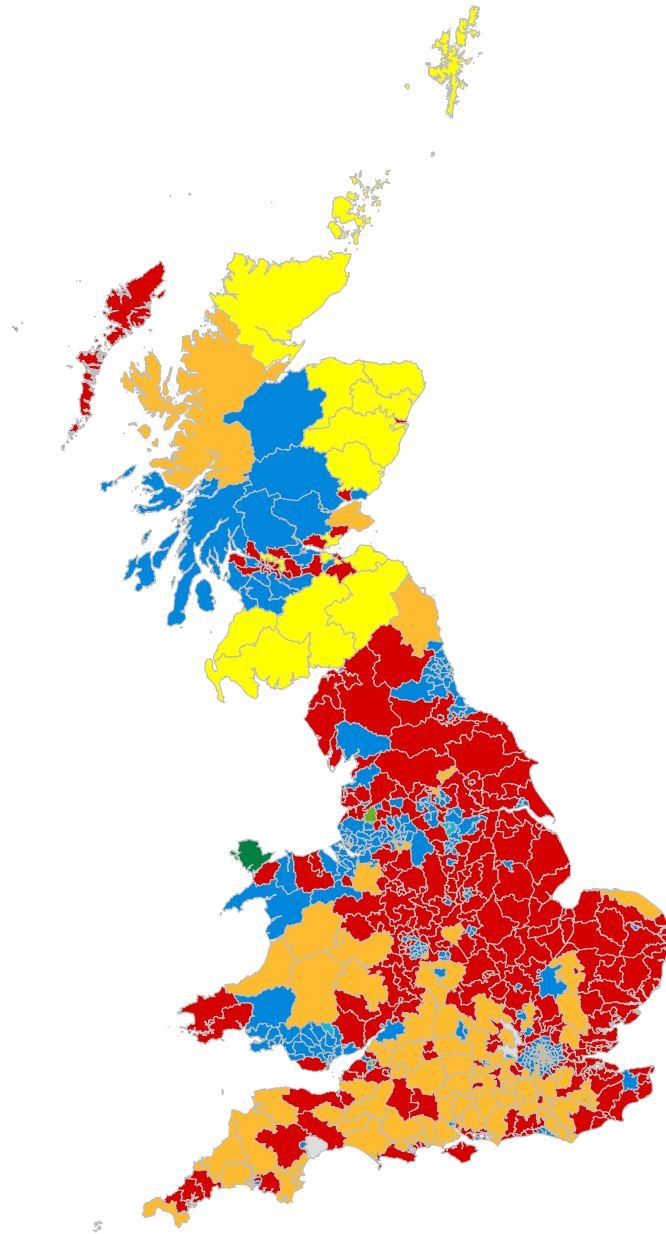
	2017 Result	Estimate	Interval
Con	317	348	[316 - 374]
Lab	262	223	[197 - 255]
LD	12	14	[11 - 21]
Brexit	0	0	[0 - 1]
Green	1	1	[1 - 1]
SNP	35	41	[25 - 55]
PC	4	4	[2 - 5]
Other	1	1	[1 - 2]

Table 2: Current estimated vote shares

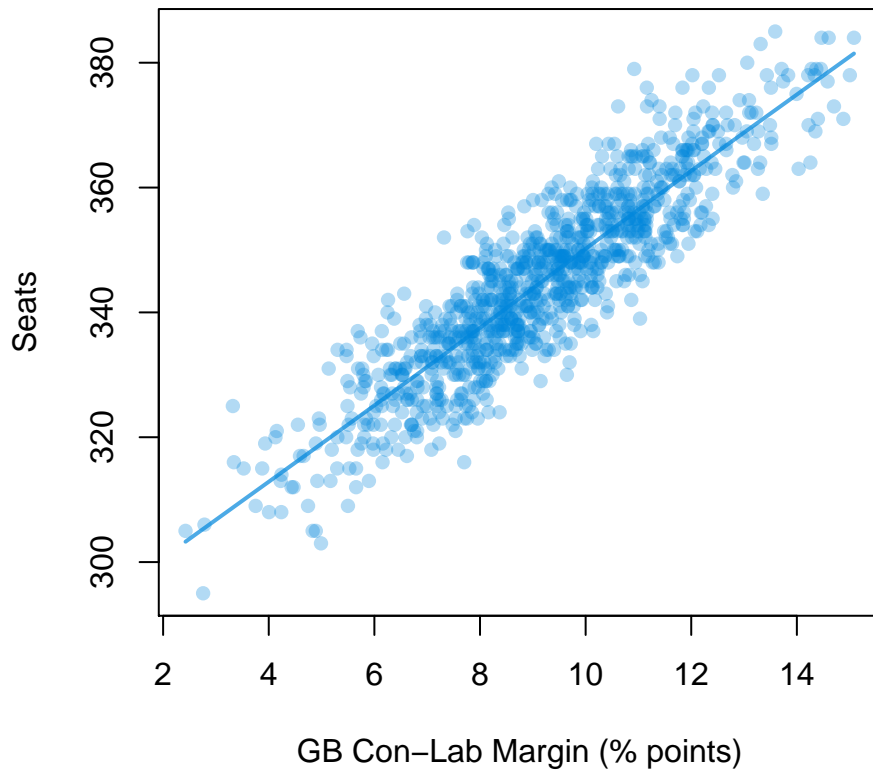
	2017 Result	Estimate	Interval
Con	43.4	42.9	[40.4 - 45.3]
Lab	41.0	33.8	[30.8 - 36.5]
LD	7.6	12.1	[10.1 - 14.0]
Brexit	1.9	2.9	[2.1 - 3.9]
Green	1.7	2.9	[2.1 - 4.0]
SNP	3.1	3.5	[2.6 - 4.5]
PC	0.5	0.5	[0.2 - 0.9]
Other	0.8	1.4	[0.8 - 2.2]

The maps below show the predicted winning party (left) and runner up (right) for each constituency:





Con



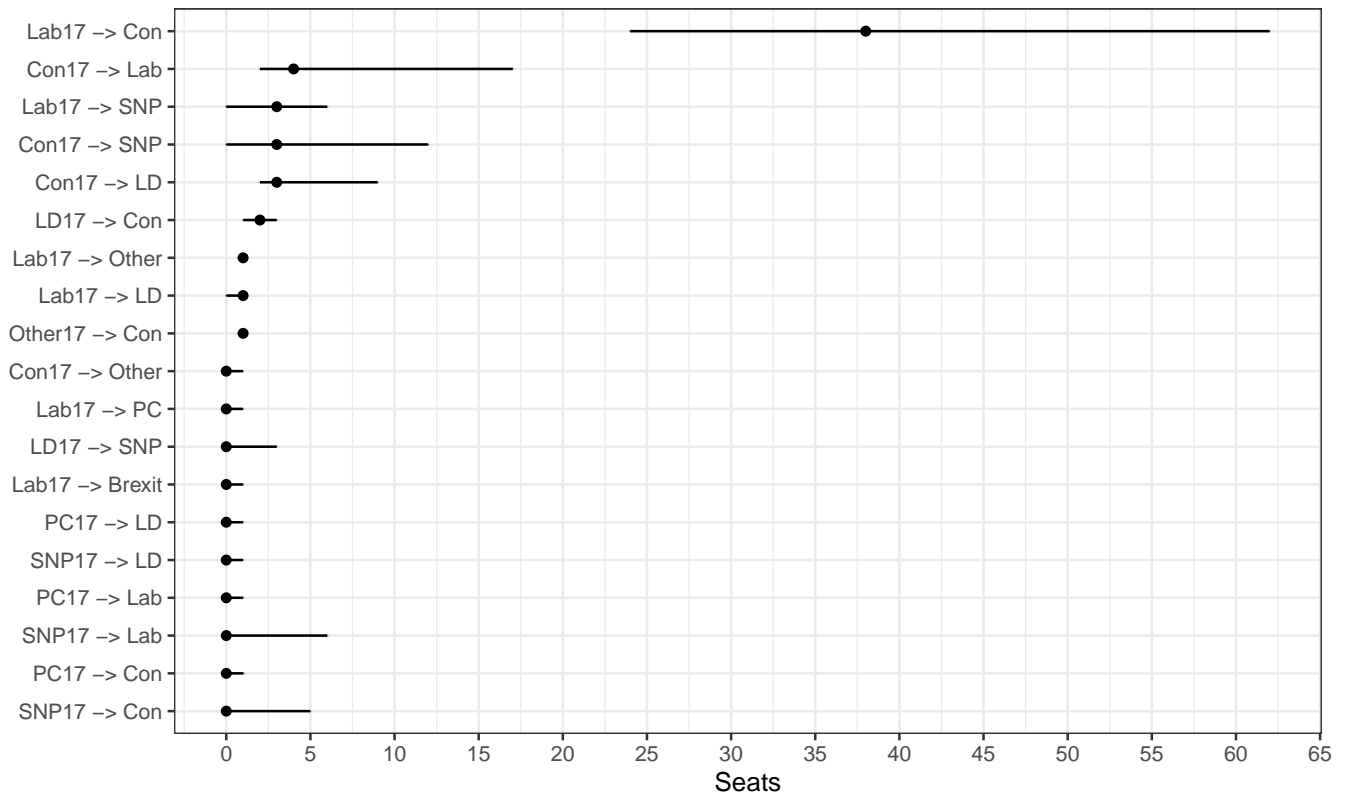
The plot above shows the “seats-votes” curves for Conservative seats given the Conservative - Labour national vote margin.

Seat Gains/Losses by Party

Table 3: Current seats (column) by 2017 seats (row)

	Con	Lab	LD	Brexit	Green	SNP	PC	Other
Con17	307	4	3	0	0	3	0	0
Lab17	38	219	1	0	0	3	0	1
LD17	2	0	10	0	0	0	0	0
UKIP17	0	0	0	0	0	0	0	0
Green17	0	0	0	0	1	0	0	0
SNP17	0	0	0	0	0	35	0	0
PC17	0	0	0	0	0	0	4	0
Other17	1	0	0	0	0	0	0	0

Interval Estimates



DEMOGRAPHIC VOTE TABLES

The following tables provide current vote intention by various demographic variables.

Vote by 2017 vote

Table 4: Current vote (column) by 2017 vote (row), row percentages.

	Con	Lab	LD	Brexit	Green	SNP	PC	Other	Turnout	Fraction
Con 17	83	4	8	2	1	0	0	1	92	39
Lab 17	11	74	8	2	3	1	0	1	88	35
LD 17	13	18	62	1	4	1	0	1	92	7
UKIP 17	63	7	3	21	2	0	0	4	94	2
Green 17	18	28	14	2	35	0	0	2	89	1
SNP 17	4	5	1	0	1	89	0	0	89	3
PC 17	18	14	3	9	1	0	54	0	92	0
Other 17	35	20	13	7	5	1	0	17	83	1
None 17	41	32	12	5	4	4	0	2	25	11
Ineligible 17	21	54	12	2	6	3	0	1	52	2

Table 5: Current vote (column) by 2017 vote (row), proportions of all projected voters.

	Con	Lab	LD	Brexit	Green	SNP	PC	Other	Total
Con 17	31.8	1.6	3.1	1.0	0.5	0.1	0.0	0.4	38.5
Lab 17	3.7	25.4	2.9	0.8	1.0	0.4	0.1	0.5	34.8
LD 17	0.9	1.2	4.1	0.1	0.3	0.1	0.0	0.1	6.7
UKIP 17	1.1	0.1	0.0	0.4	0.0	0.0	0.0	0.1	1.7
Green 17	0.3	0.4	0.2	0.0	0.5	0.0	0.0	0.0	1.4
SNP 17	0.1	0.1	0.0	0.0	0.0	2.4	0.0	0.0	2.7
PC 17	0.1	0.1	0.0	0.0	0.0	0.0	0.2	0.0	0.5
Other 17	0.2	0.1	0.1	0.0	0.0	0.0	0.0	0.1	0.5
None 17	4.3	3.4	1.3	0.6	0.4	0.4	0.1	0.3	10.8
Ineligible 17	0.5	1.3	0.3	0.0	0.2	0.1	0.0	0.0	2.5
Total	42.9	33.8	12.0	2.9	2.9	3.4	0.5	1.5	100.0

Vote by 2017 vote (Scotland)

Table 6: Current vote (column) by 2017 vote (row), row percentages.

	Con	Lab	LD	Brexit	Green	SNP	PC	Other	Turnout	Fraction
Con 17	80	5	9	1	0	4	0	0	92	25
Lab 17	10	56	8	1	1	24	0	0	85	22
LD 17	11	11	62	1	2	14	0	0	88	6
UKIP 17	68	10	7	9	1	2	0	4	96	0
Green 17	10	19	9	1	28	33	0	0	74	0
SNP 17	4	5	1	0	1	89	0	0	89	32
PC 17	NA	NA	NA	NA	NA	NA	NA	NA	NA	NA
Other 17	31	19	8	5	1	34	0	2	95	0
None 17	23	22	11	1	2	41	0	1	24	12
Ineligible 17	16	33	8	1	3	38	0	0	52	2

Vote by 2017 vote (Wales)

Table 7: Current vote (column) by 2017 vote (row), row percentages.

	Con	Lab	LD	Brexit	Green	SNP	PC	Other	Turnout	Fraction
Con 17	80	5	4	7	1	0	3	0	94	30
Lab 17	8	79	3	4	1	0	4	1	88	42
LD 17	14	26	46	3	2	0	8	1	93	4
UKIP 17	44	7	1	42	1	0	3	2	96	2
Green 17	12	40	13	4	19	0	11	1	85	0
SNP 17	NA	NA	NA	NA	NA	NA	NA	NA	NA	NA
PC 17	18	14	3	9	1	0	54	0	92	9
Other 17	52	24	3	17	3	0	0	1	89	0
None 17	32	40	6	10	2	0	9	1	24	10
Ineligible 17	19	60	6	4	3	0	8	1	52	3

Vote by 2016 EU referendum vote

Table 8: Current vote (column) by EU vote (row), row percentages.

	Con	Lab	LD	Brexit	Green	SNP	PC	Other	Turnout	Fraction
Leave 16	66	19	3	5	2	2	0	2	90	46
Remain 16	22	46	21	0	3	5	1	1	93	44
Did not vote 16	30	46	11	2	3	5	0	2	15	6
Ineligible 16	23	54	11	1	5	4	0	1	54	4

Table 9: Current vote (column) by 2016 vote (row), proportions of all projected voters.

	Con	Lab	LD	Brexit	Green	SNP	PC	Other	Total
Leave 16	30.5	8.9	1.6	2.6	1.0	0.7	0.1	0.8	46.3
Remain 16	9.9	20.3	9.4	0.2	1.5	2.3	0.3	0.5	44.3
Did not vote 16	1.7	2.6	0.6	0.1	0.2	0.3	0.0	0.1	5.7
Ineligible 16	0.8	2.0	0.4	0.1	0.2	0.1	0.0	0.1	3.7
Total	42.9	33.8	12.0	2.9	2.9	3.4	0.5	1.5	100.0

Vote by 2016 x 2017 vote

Table 10: Current vote (column) by 2016 and 2017 vote combinations (row), row proportions.

	Con	Lab	LD	Brexit	Green	SNP	PC	Other	Fraction
Leave 16 - Con 17	90	2	2	3	1	0	0	1	25
Leave 16 - Lab 17	24	60	4	6	3	1	0	2	11
Leave 16 - LD 17	43	14	29	4	6	1	0	3	1
Leave 16 - UKIP 17	63	7	2	22	2	0	0	5	2
Leave 16 - Green 17	33	20	7	5	32	0	0	4	1
Leave 16 - SNP 17	12	7	1	1	1	76	0	0	1
Leave 16 - PC 17	34	12	1	20	1	0	30	1	0
Leave 16 - Other 17	48	12	4	13	5	1	0	17	0
Leave 16 - None 17	57	21	5	9	4	1	0	3	5
Leave 16 - Ineligible 17	0	0	0	0	0	0	0	0	0
Remain 16 - Con 17	67	8	21	1	2	1	0	1	12
Remain 16 - Lab 17	4	80	11	0	3	1	0	1	21
Remain 16 - LD 17	6	19	70	0	3	1	0	1	5
Remain 16 - UKIP 17	47	22	16	6	4	0	0	5	0
Remain 16 - Green 17	7	33	20	0	38	0	0	1	1
Remain 16 - SNP 17	1	4	1	0	1	93	0	0	2
Remain 16 - PC 17	5	16	5	1	2	0	71	0	0
Remain 16 - Other 17	21	27	24	2	6	2	0	19	0
Remain 16 - None 17	20	42	24	1	5	7	1	2	3
Remain 16 - Ineligible 17	0	0	0	0	0	0	0	0	0
Did not vote 16 - Con 17	79	7	9	2	2	0	0	1	1
Did not vote 16 - Lab 17	8	79	6	1	2	2	0	1	2
Did not vote 16 - LD 17	17	19	54	1	4	3	0	1	0
Did not vote 16 - UKIP 17	49	22	9	14	3	0	0	5	0
Did not vote 16 - Green 17	16	34	15	2	29	1	0	2	0
Did not vote 16 - SNP 17	3	5	1	0	1	89	0	0	0
Did not vote 16 - PC 17	13	22	4	4	2	0	54	1	0
Did not vote 16 - Other 17	31	30	14	5	5	0	0	15	0
Did not vote 16 - None 17	31	40	13	3	5	4	0	2	2
Did not vote 16 - Ineligible 17	0	0	0	0	0	0	0	0	0
Ineligible 16 - Con 17	73	12	9	0	3	1	1	1	0
Ineligible 16 - Lab 17	7	81	6	0	3	2	0	2	1
Ineligible 16 - LD 17	14	27	46	0	7	4	0	2	0
Ineligible 16 - UKIP 17	51	28	6	5	4	0	1	5	0
Ineligible 16 - Green 17	11	39	10	0	38	0	0	2	0
Ineligible 16 - SNP 17	1	3	0	0	1	95	0	0	0
Ineligible 16 - PC 17	3	46	5	0	1	0	44	1	0
Ineligible 16 - Other 17	31	31	7	1	10	2	0	18	0
Ineligible 16 - None 17	25	52	9	1	5	6	1	2	0
Ineligible 16 - Ineligible 17	21	53	12	2	6	3	0	1	2

Table 11: Current vote (column) by 2016 and 2017 vote combinations (row), proportions of all projected voters.

	Con	Lab	LD	Brexit	Green	SNP	PC	Other	Fraction
Leave 16 - Con 17	22.7	0.5	0.5	0.9	0.2	0.0	0.0	0.2	25.1
Leave 16 - Lab 17	2.7	6.8	0.4	0.7	0.3	0.1	0.0	0.3	11.3
Leave 16 - LD 17	0.5	0.2	0.4	0.1	0.1	0.0	0.0	0.0	1.2
Leave 16 - UKIP 17	1.0	0.1	0.0	0.4	0.0	0.0	0.0	0.1	1.6
Leave 16 - Green 17	0.2	0.1	0.0	0.0	0.2	0.0	0.0	0.0	0.6
Leave 16 - SNP 17	0.1	0.1	0.0	0.0	0.0	0.6	0.0	0.0	0.7
Leave 16 - PC 17	0.1	0.0	0.0	0.0	0.0	0.0	0.1	0.0	0.2
Leave 16 - Other 17	0.1	0.0	0.0	0.0	0.0	0.0	0.0	0.0	0.2
Leave 16 - None 17	3.1	1.1	0.2	0.5	0.2	0.1	0.0	0.1	5.3
Leave 16 - Ineligible 17	0.0	0.0	0.0	0.0	0.0	0.0	0.0	0.0	0.0
Remain 16 - Con 17	8.0	0.9	2.5	0.1	0.3	0.1	0.0	0.1	12.0
Remain 16 - Lab 17	0.7	16.5	2.3	0.1	0.6	0.3	0.1	0.2	20.8
Remain 16 - LD 17	0.3	1.0	3.6	0.0	0.2	0.0	0.0	0.0	5.1
Remain 16 - UKIP 17	0.0	0.0	0.0	0.0	0.0	0.0	0.0	0.0	0.1
Remain 16 - Green 17	0.0	0.2	0.1	0.0	0.3	0.0	0.0	0.0	0.7
Remain 16 - SNP 17	0.0	0.1	0.0	0.0	0.0	1.6	0.0	0.0	1.8
Remain 16 - PC 17	0.0	0.0	0.0	0.0	0.0	0.0	0.2	0.0	0.3
Remain 16 - Other 17	0.0	0.1	0.1	0.0	0.0	0.0	0.0	0.0	0.2
Remain 16 - None 17	0.7	1.4	0.8	0.0	0.2	0.2	0.0	0.1	3.3
Remain 16 - Ineligible 17	0.0	0.0	0.0	0.0	0.0	0.0	0.0	0.0	0.0
Did not vote 16 - Con 17	0.9	0.1	0.1	0.0	0.0	0.0	0.0	0.0	1.1
Did not vote 16 - Lab 17	0.2	1.7	0.1	0.0	0.1	0.0	0.0	0.0	2.2
Did not vote 16 - LD 17	0.0	0.1	0.1	0.0	0.0	0.0	0.0	0.0	0.3
Did not vote 16 - UKIP 17	0.0	0.0	0.0	0.0	0.0	0.0	0.0	0.0	0.0
Did not vote 16 - Green 17	0.0	0.0	0.0	0.0	0.0	0.0	0.0	0.0	0.1
Did not vote 16 - SNP 17	0.0	0.0	0.0	0.0	0.0	0.2	0.0	0.0	0.2
Did not vote 16 - PC 17	0.0	0.0	0.0	0.0	0.0	0.0	0.0	0.0	0.0
Did not vote 16 - Other 17	0.0	0.0	0.0	0.0	0.0	0.0	0.0	0.0	0.1
Did not vote 16 - None 17	0.5	0.7	0.2	0.1	0.1	0.1	0.0	0.0	1.7
Did not vote 16 - Ineligible 17	0.0	0.0	0.0	0.0	0.0	0.0	0.0	0.0	0.0
Ineligible 16 - Con 17	0.2	0.0	0.0	0.0	0.0	0.0	0.0	0.0	0.2
Ineligible 16 - Lab 17	0.0	0.4	0.0	0.0	0.0	0.0	0.0	0.0	0.5
Ineligible 16 - LD 17	0.0	0.0	0.0	0.0	0.0	0.0	0.0	0.0	0.1
Ineligible 16 - UKIP 17	0.0	0.0	0.0	0.0	0.0	0.0	0.0	0.0	0.0
Ineligible 16 - Green 17	0.0	0.0	0.0	0.0	0.0	0.0	0.0	0.0	0.0
Ineligible 16 - SNP 17	0.0	0.0	0.0	0.0	0.0	0.0	0.0	0.0	0.0
Ineligible 16 - PC 17	0.0	0.0	0.0	0.0	0.0	0.0	0.0	0.0	0.0
Ineligible 16 - Other 17	0.0	0.0	0.0	0.0	0.0	0.0	0.0	0.0	0.0
Ineligible 16 - None 17	0.1	0.2	0.0	0.0	0.0	0.0	0.0	0.0	0.4
Ineligible 16 - Ineligible 17	0.5	1.3	0.3	0.0	0.2	0.1	0.0	0.0	2.5

Vote by 2019 EU parliament election vote

Table 12: Current vote (column) by EP vote (row), row percentages.

	Con	Lab	LD	Brexit	Green	SNP	PC	Other	Turnout	Fraction
Con 19	89	4	5	0	1	0	0	1	92	5
Lab 19	2	93	3	0	1	1	0	0	90	7
LD 19	9	41	46	0	2	1	0	1	90	10
Brexit 19	83	5	1	8	1	0	0	2	93	16
Green 19	7	57	17	0	14	3	0	1	90	6
SNP 19	1	4	1	0	0	93	0	0	89	2
PC 19	4	50	4	0	0	0	41	0	84	0
Other 19	51	24	11	7	3	1	0	4	83	4
None 19	44	35	11	2	3	3	0	1	57	51

Table 13: Current vote (column) by EP turnout (row), row percentages.

	Con	Lab	LD	Brexit	Green	SNP	PC	Other	Turnout	Fraction
Voted 19	42	33	13	3	3	4	1	1	91	49
Did not vote 19	44	35	11	2	3	3	0	1	57	51

Vote by age

Table 14: Current vote (column) by age (row), row percentages.

	Con	Lab	LD	Brexit	Green	SNP	PC	Other	Turnout	Fraction
18-25	22	56	11	2	4	4	0	1	52	8
25-30	26	52	12	2	4	4	0	1	52	6
30-35	31	46	13	2	3	4	0	1	57	7
35-40	35	41	14	2	3	4	0	1	63	7
40-45	39	36	14	2	3	3	0	1	66	7
45-50	43	33	13	3	3	4	0	1	70	9
50-55	44	32	12	3	3	4	0	1	74	10
55-60	45	31	11	4	3	4	1	1	79	9
60-65	48	29	11	4	2	4	1	1	83	8
65-70	52	26	11	4	2	3	1	2	85	8
70-75	59	20	11	3	2	3	1	2	85	7
75-80	60	18	12	3	2	3	1	2	85	5
80-85	61	17	11	3	2	3	0	2	87	4
85+	62	16	12	3	2	2	0	2	90	2

Vote by gender

Table 15: Current vote (column) by gender (row), row percentages.

	Con	Lab	LD	Brexit	Green	SNP	PC	Other	Turnout	Fraction
Female	42	36	11	2	3	4	0	1	71	52
Male	44	32	13	3	3	3	0	1	68	48

Vote by qualifications

Table 16: Current vote (column) by qualifications (row), row percentages.

	Con	Lab	LD	Brexit	Green	SNP	PC	Other	Turnout	Fraction
Does not apply	60	18	11	3	2	3	1	2	86	19
None	45	36	5	7	2	4	0	1	59	6
Other	43	37	11	4	3	0	0	1	62	4
Level 1	48	35	8	4	2	3	0	1	66	6
Level 2	49	32	8	4	3	3	1	1	60	14
Level 3	38	42	10	3	3	3	0	1	63	15
Level 4+	33	39	17	2	3	5	1	1	75	36

Please note: the category “Does not apply” includes all voters over age 70, regardless of their actual level of qualifications. This is because the Annual Population Survey does not record qualifications for retired individuals past the age of 70.

Vote by (self-reported) attention to politics

Table 17: Current vote (column) by attention (row), row percentages.

	Con	Lab	LD	Brexit	Green	SNP	PC	Other	Turnout	Fraction
0	43	35	10	4	3	3	0	2	43	5
1	43	34	10	4	4	3	0	2	50	3
2	43	34	10	4	3	3	0	2	54	5
3	43	34	11	3	4	3	0	2	59	9
4	44	34	11	3	3	3	1	1	60	7
5	44	33	12	3	3	3	0	1	71	14
6	43	34	12	3	3	4	0	1	77	13
7	43	34	13	2	3	4	0	1	79	17
8	43	34	13	2	2	4	0	1	85	14
9	42	34	13	2	2	4	0	1	86	5
10	42	34	14	2	2	4	0	1	89	7

Vote by ethnicity

Table 18: Current vote (column) by ethnicity (row), row percentages.

	Con	Lab	LD	Brexit	Green	SNP	PC	Other	Turnout	Fraction
White	45	32	12	3	3	4	0	1	70	91
Asian	29	54	10	2	3	1	0	1	69	6
Black	20	64	9	2	4	1	0	1	55	2
Mixed/Multiple	19	58	15	2	4	0	0	2	56	1

Vote by marital status

Table 19: Current vote (column) by marital status (row), row percentages.

	Con	Lab	LD	Brexit	Green	SNP	PC	Other	Turnout	Fraction
Never Married/Partnered	32	45	12	3	4	4	0	1	57	27
Ever Married/Partnered	47	30	12	3	3	3	0	1	76	73

Vote by region

Table 20: Current vote (column) by region (row), row percentages.

	Con	Lab	LD	Brexit	Green	SNP	PC	Other	Turnout	Fraction
North East	36	44	7	10	2	0	0	1	67	4
North West	37	44	8	6	3	0	0	2	68	11
Yorkshire and The Humber	40	41	8	7	2	0	0	2	68	8
East Midlands	51	35	8	2	3	0	0	1	71	8
West Midlands	50	35	9	2	3	0	0	1	69	9
East of England	54	27	14	1	3	0	0	2	72	10
London	32	47	15	2	4	0	0	1	69	12
South East	52	24	18	0	4	0	0	2	73	15
South West	51	25	18	0	3	0	0	2	73	10
Wales	34	43	5	7	1	0	9	1	69	5
Scotland	28	19	10	1	1	41	0	0	67	8

CONSTITUENCY ESTIMATES

Table 21: Current vote (column) by constituency (row), row percentages.

	Con	Lab	LD	Brexit	Green	SNP	PC	Other	Turnout
Aldershot	57	28	12	0	4	0	0	0	70
Aldridge-Brownhills	66	23	6	0	3	0	0	2	68
Altrincham and Sale West	45	34	15	0	4	0	0	2	74
Amber Valley	58	33	6	0	3	0	0	0	70
Arundel and South Downs	55	20	19	0	4	0	0	3	79
Ashfield	44	34	4	11	2	0	0	5	68
Ashford	58	24	10	0	5	0	0	3	72
Ashton-under-Lyne	35	44	5	13	3	0	0	0	64
Aylesbury	49	31	16	0	4	0	0	0	73
Banbury	53	32	11	0	4	0	0	0	73
Barking	25	56	6	10	3	0	0	0	62
Barnsley Central	16	44	4	32	3	0	0	2	64
Barnsley East	24	44	4	25	3	0	0	0	62
Barrow and Furness	51	36	5	6	2	0	0	0	69
Basildon and Billericay	65	22	8	0	3	0	0	2	69
Basingstoke	52	32	11	0	3	0	0	1	72
Bassetlaw	47	37	5	12	0	0	0	0	70
Bath	33	10	52	3	0	0	0	1	74
Batley and Spen	39	45	5	7	2	0	0	2	68
Battersea	34	51	11	1	3	0	0	0	70
Beaconsfield	56	12	0	0	3	0	0	30	75
Beckenham	51	26	19	0	3	0	0	0	77
Bedford	42	44	8	3	3	0	0	0	63
Bermondsey and Old Southwark	11	54	32	3	0	0	0	0	65
Berwick-upon-Tweed	53	21	22	0	3	0	0	0	73
Bethnal Green and Bow	14	64	12	3	6	0	0	2	65
Beverley and Holderness	56	28	10	0	3	0	0	3	73
Bexhill and Battle	63	21	11	0	4	0	0	0	76
Bexleyheath and Crayford	58	31	7	0	2	0	0	2	71
Birkenhead	13	53	8	7	4	0	0	16	67
Birmingham, Edgbaston	40	49	6	3	2	0	0	0	62
Birmingham, Erdington	38	48	5	6	3	0	0	0	58
Birmingham, Hall Green	19	59	10	5	4	0	0	3	67
Birmingham, Hodge Hill	19	65	3	7	4	0	0	2	63
Birmingham, Ladywood	15	67	10	4	5	0	0	0	55
Birmingham, Northfield	42	44	5	5	2	0	0	1	60
Birmingham, Perry Barr	29	54	6	5	4	0	0	2	66
Birmingham, Selly Oak	29	56	6	6	4	0	0	0	62
Birmingham, Yardley	20	53	16	8	3	0	0	0	62

	Con	Lab	LD	Brexit	Green	SNP	PC	Other	Turnout
Bishop Auckland	49	40	3	7	0	0	0	0	68
Blackburn	26	56	4	8	3	0	0	2	64
Blackley and Broughton	22	58	8	9	4	0	0	0	56
Blackpool North and Cleveleys	56	36	4	0	2	0	0	2	66
Blackpool South	45	39	3	10	2	0	0	1	62
Blaydon	28	45	9	14	3	0	0	2	70
Blyth Valley	39	45	7	7	3	0	0	0	68
Bognor Regis and Littlehampton	59	23	12	0	4	0	0	3	71
Bolsover	43	38	4	11	2	0	0	2	68
Bolton North East	44	44	4	7	2	0	0	0	68
Bolton South East	30	47	5	15	3	0	0	0	60
Bolton West	54	39	4	0	2	0	0	0	72
Bootle	15	66	6	10	3	0	0	0	66
Boston and Skegness	71	20	6	0	0	0	0	3	69
Bosworth	56	17	23	0	4	0	0	0	72
Bournemouth East	53	34	8	0	3	0	0	2	67
Bournemouth West	53	35	8	0	4	0	0	0	62
Bracknell	53	26	16	0	3	0	0	2	72
Bradford East	23	54	9	10	4	0	0	0	63
Bradford South	40	44	4	10	2	0	0	0	63
Bradford West	20	59	5	8	4	0	0	4	65
Braintree	63	23	10	0	0	0	0	3	72
Brent Central	21	65	10	0	4	0	0	0	61
Brent North	32	54	9	2	3	0	0	1	68
Brentford and Isleworth	37	49	10	2	2	0	0	0	72
Brentwood and Ongar	64	13	20	0	3	0	0	0	74
Bridgwater and West Somerset	58	23	13	0	3	0	0	2	71
Brigg and Goole	62	29	5	0	3	0	0	0	71
Brighton, Kemptown	35	53	6	3	3	0	0	0	71
Brighton, Pavilion	17	16	0	2	64	0	0	1	69
Bristol East	30	56	7	4	4	0	0	0	70
Bristol North West	38	54	5	0	3	0	0	0	72
Bristol South	29	55	7	4	4	0	0	0	68
Bristol West	12	58	0	4	26	0	0	0	73
Broadland	56	24	14	0	3	0	0	2	74
Bromley and Chislehurst	53	30	12	0	3	0	0	2	75
Bromsgrove	59	24	13	0	4	0	0	0	75
Broxbourne	64	21	11	0	3	0	0	0	70
Broxtowe	46	40	0	0	3	0	0	11	77
Buckingham	49	15	28	6	0	0	0	3	76
Burnley	32	40	8	16	2	0	0	2	64
Burton	56	36	5	0	3	0	0	0	70
Bury North	43	45	4	6	2	0	0	0	69
Bury South	47	40	4	4	2	0	0	2	69

	Con	Lab	LD	Brexit	Green	SNP	PC	Other	Turnout
Bury St Edmunds	55	27	0	0	14	0	0	3	74
Calder Valley	50	43	5	0	0	0	0	2	72
Camberwell and Peckham	12	66	11	3	6	0	0	1	65
Camborne and Redruth	49	40	6	0	3	0	0	2	72
Cambridge	13	51	29	2	4	0	0	1	69
Cannock Chase	70	26	0	0	5	0	0	0	66
Canterbury	41	52	6	0	0	0	0	1	73
Carlisle	55	39	5	0	0	0	0	2	71
Carshalton and Wallington	40	7	46	4	2	0	0	1	72
Castle Point	72	20	8	0	0	0	0	0	72
Central Devon	54	27	15	0	4	0	0	0	78
Central Suffolk and North Ipswich	61	25	10	0	5	0	0	0	75
Charnwood	56	29	10	0	5	0	0	0	73
Chatham and Aylesford	60	29	7	0	2	0	0	2	67
Cheadle	48	9	43	0	0	0	0	0	77
Chelmsford	51	17	30	0	0	0	0	2	72
Chelsea and Fulham	45	24	29	0	0	0	0	2	66
Cheltenham	48	6	45	0	0	0	0	1	73
Chesham and Amersham	52	12	32	0	4	0	0	0	80
Chesterfield	37	44	7	8	3	0	0	2	68
Chichester	56	16	22	0	4	0	0	2	73
Chingford and Woodford Green	47	45	8	0	0	0	0	0	69
Chippenham	55	11	34	0	0	0	0	0	76
Chipping Barnet	42	45	9	0	2	0	0	1	72
Chorley	0	0	0	0	16	0	0	84	75
Christchurch	63	14	20	0	4	0	0	0	77
Cities of London and Westminster	41	24	32	0	3	0	0	1	64
City of Chester	39	50	5	3	2	0	0	0	75
City of Durham	31	46	11	9	4	0	0	0	68
Clacton	66	19	7	0	3	0	0	5	68
Cleethorpes	63	29	6	0	3	0	0	0	69
Colchester	47	32	17	0	3	0	0	0	68
Colne Valley	47	41	5	5	2	0	0	1	71
Congleton	54	33	9	0	3	0	0	2	76
Copeland	55	38	5	0	2	0	0	0	69
Corby	53	42	5	0	0	0	0	0	72
Coventry North East	31	53	6	7	3	0	0	0	64
Coventry North West	41	44	7	6	3	0	0	0	67
Coventry South	41	44	6	5	3	0	0	1	66
Crawley	48	43	7	0	3	0	0	0	69
Crewe and Nantwich	46	42	5	4	2	0	0	1	71
Croydon Central	41	48	5	3	2	0	0	1	69
Croydon North	22	62	8	3	4	0	0	1	63
Croydon South	50	36	10	0	3	0	0	1	73

	Con	Lab	LD	Brexit	Green	SNP	PC	Other	Turnout
Dagenham and Rainham	43	40	4	10	2	0	0	1	66
Darlington	46	39	5	7	2	0	0	1	67
Dartford	60	31	6	0	3	0	0	0	72
Daventry	61	21	14	0	4	0	0	0	75
Denton and Reddish	27	50	7	12	3	0	0	2	63
Derby North	50	38	5	4	2	0	0	1	70
Derby South	32	50	7	11	0	0	0	0	61
Derbyshire Dales	54	29	13	0	4	0	0	0	78
Devizes	54	20	21	0	5	0	0	0	72
Dewsbury	44	44	4	5	2	0	0	1	70
Don Valley	45	35	4	11	2	0	0	2	67
Doncaster Central	33	42	4	15	3	0	0	2	62
Doncaster North	24	46	5	22	0	0	0	3	64
Dover	53	36	6	0	3	0	0	2	72
Dudley North	53	38	3	0	2	0	0	5	66
Dudley South	61	32	5	0	2	0	0	0	66
Dulwich and West Norwood	17	57	0	2	23	0	0	1	71
Ealing Central and Acton	32	53	10	2	3	0	0	0	72
Ealing North	28	59	9	0	4	0	0	0	70
Ealing, Southall	20	56	13	3	6	0	0	2	72
Easington	22	48	6	21	0	0	0	3	61
East Devon	51	3	2	0	1	0	0	44	77
East Ham	17	67	7	4	4	0	0	1	63
East Hampshire	57	13	24	0	4	0	0	2	79
East Surrey	53	16	24	0	4	0	0	3	74
East Worthing and Shoreham	50	40	6	0	3	0	0	2	73
East Yorkshire	59	28	8	0	3	0	0	3	71
Eastbourne	49	6	39	5	0	0	0	2	73
Eastleigh	52	10	35	0	3	0	0	0	72
Eddisbury	53	20	23	0	3	0	0	2	73
Edmonton	22	62	6	4	4	0	0	1	63
Ellesmere Port and Neston	35	49	6	7	2	0	0	0	73
Elmet and Rothwell	52	34	9	0	3	0	0	2	75
Eltham	39	47	7	4	2	0	0	0	71
Enfield North	36	50	7	5	3	0	0	0	67
Enfield, Southgate	42	49	5	2	2	0	0	0	73
Epping Forest	61	20	12	0	4	0	0	3	72
Epsom and Ewell	50	17	26	0	4	0	0	2	77
Erewash	53	37	5	0	2	0	0	2	71
Erith and Thamesmead	38	44	8	6	3	0	0	2	65
Esher and Walton	47	8	43	0	0	0	0	2	76
Exeter	30	59	0	3	6	0	0	1	70
Fareham	60	23	12	0	5	0	0	0	75
Faversham and Mid Kent	61	23	10	0	4	0	0	2	74

	Con	Lab	LD	Brexit	Green	SNP	PC	Other	Turnout
Feltham and Heston	32	51	9	5	3	0	0	0	66
Filton and Bradley Stoke	47	42	7	0	3	0	0	1	72
Finchley and Golders Green	52	21	28	0	0	0	0	0	72
Folkestone and Hythe	56	27	10	0	5	0	0	3	72
Forest of Dean	54	34	0	0	8	0	0	3	76
Fylde	56	30	8	0	4	0	0	2	73
Gainsborough	63	23	11	0	0	0	0	3	71
Garston and Halewood	16	64	7	8	3	0	0	2	68
Gateshead	33	54	8	0	4	0	0	0	64
Gedling	45	43	5	5	2	0	0	0	73
Gillingham and Rainham	56	33	7	0	3	0	0	2	69
Gloucester	54	37	7	0	2	0	0	0	68
Gosport	61	25	10	0	4	0	0	0	71
Grantham and Stamford	62	24	10	0	4	0	0	0	73
Gravesham	57	35	6	0	3	0	0	0	70
Great Grimsby	44	40	3	10	2	0	0	1	60
Great Yarmouth	60	30	5	0	3	0	0	3	65
Greenwich and Woolwich	22	57	12	4	5	0	0	1	67
Guildford	44	10	39	0	0	0	0	7	74
Hackney North and Stoke Newington	11	65	10	2	9	0	0	2	66
Hackney South and Shoreditch	9	69	12	2	7	0	0	1	64
Halesowen and Rowley Regis	60	33	4	0	2	0	0	2	70
Halifax	40	45	4	9	2	0	0	0	62
Haltemprice and Howden	59	25	11	0	3	0	0	3	74
Halton	23	56	6	12	3	0	0	0	66
Hammersmith	25	58	12	2	4	0	0	0	70
Hampstead and Kilburn	26	48	21	2	3	0	0	0	68
Harborough	51	25	19	0	3	0	0	2	75
Harlow	58	35	6	0	0	0	0	0	70
Harrogate and Knaresborough	50	10	38	0	0	0	0	2	76
Harrow East	47	42	9	0	2	0	0	0	73
Harrow West	32	52	10	3	3	0	0	0	71
Hartlepool	32	37	5	24	0	0	0	2	62
Harwich and North Essex	56	28	10	0	4	0	0	2	73
Hastings and Rye	48	43	7	0	0	0	0	2	71
Havant	63	20	10	0	4	0	0	3	68
Hayes and Harlington	30	55	7	4	3	0	0	2	63
Hazel Grove	49	10	41	0	0	0	0	0	73
Hemel Hempstead	52	32	12	0	4	0	0	0	73
Hemsworth	31	44	4	16	2	0	0	2	67
Hendon	44	44	10	0	2	0	0	0	72
Henley	53	12	31	0	4	0	0	0	79
Hereford and South Herefordshire	60	24	11	0	5	0	0	0	73
Hertford and Stortford	52	22	19	0	5	0	0	2	74

	Con	Lab	LD	Brexit	Green	SNP	PC	Other	Turnout
Hertsmere	60	22	15	0	3	0	0	0	73
Hexham	55	34	8	0	4	0	0	0	77
Heywood and Middleton	37	45	4	13	2	0	0	0	62
High Peak	41	47	6	4	2	0	0	0	73
Hitchin and Harpenden	48	21	30	0	0	0	0	2	78
Holborn and St Pancras	14	59	17	3	6	0	0	1	64
Hornchurch and Upminster	63	25	7	0	3	0	0	2	71
Hornsey and Wood Green	13	54	26	2	5	0	0	1	74
Horsham	54	16	23	0	4	0	0	2	77
Houghton and Sunderland South	28	46	5	16	3	0	0	2	63
Hove	26	61	6	3	3	0	0	1	74
Huddersfield	34	50	5	6	4	0	0	0	65
Huntingdon	52	26	15	0	3	0	0	3	74
Hyndburn	44	42	3	10	2	0	0	0	65
Ilford North	37	51	5	3	2	0	0	1	71
Ilford South	20	64	2	2	2	0	0	10	67
Ipswich	48	41	4	4	2	0	0	1	68
Isle of Wight	54	26	0	0	15	0	0	5	70
Islington North	11	60	18	2	7	0	0	1	69
Islington South and Finsbury	15	57	18	3	5	0	0	1	67
Jarrow	23	47	6	17	4	0	0	3	64
Keighley	47	44	3	5	0	0	0	1	71
Kenilworth and Southam	51	17	25	0	4	0	0	3	77
Kensington	38	38	19	2	2	0	0	1	64
Kettering	53	35	6	0	4	0	0	2	72
Kingston and Surbiton	33	9	52	3	2	0	0	1	76
Kingston upon Hull East	26	42	6	24	3	0	0	0	60
Kingston upon Hull North	26	48	6	16	4	0	0	0	59
Kingston upon Hull West and Hessle	28	45	6	19	3	0	0	0	60
Kingswood	52	38	6	0	3	0	0	1	71
Knowsley	13	67	4	10	3	0	0	2	64
Lancaster and Fleetwood	41	45	4	7	3	0	0	0	68
Leeds Central	21	59	5	8	5	0	0	2	54
Leeds East	31	51	6	9	3	0	0	0	64
Leeds North East	23	52	11	7	4	0	0	3	74
Leeds North West	19	51	23	5	3	0	0	0	68
Leeds West	23	55	5	10	4	0	0	2	64
Leicester East	27	54	8	4	5	0	0	2	68
Leicester South	22	64	5	4	5	0	0	0	66
Leicester West	30	57	5	6	3	0	0	0	58
Leigh	40	44	5	10	0	0	0	2	65
Lewes	47	6	42	0	3	0	0	2	78
Lewisham East	20	58	13	3	5	0	0	2	66
Lewisham West and Penge	23	56	11	4	4	0	0	1	69

	Con	Lab	LD	Brexit	Green	SNP	PC	Other	Turnout
Lewisham, Deptford	12	65	12	3	7	0	0	1	62
Leyton and Wanstead	21	62	9	3	5	0	0	1	67
Lichfield	60	22	12	0	4	0	0	2	75
Lincoln	44	45	3	5	2	0	0	1	69
Liverpool, Riverside	13	65	7	7	8	0	0	0	56
Liverpool, Walton	16	70	6	0	4	0	0	4	66
Liverpool, Wavertree	14	60	15	6	4	0	0	2	66
Liverpool, West Derby	13	64	7	9	4	0	0	3	67
Loughborough	48	42	6	0	3	0	0	2	68
Louth and Horncastle	65	23	8	0	0	0	0	4	72
Ludlow	61	15	21	0	3	0	0	0	77
Luton North	35	48	7	5	3	0	0	2	67
Luton South	27	43	0	12	2	0	0	15	66
Macclesfield	52	35	9	0	4	0	0	0	74
Maidenhead	56	14	27	0	3	0	0	0	78
Maidstone and The Weald	56	18	21	0	3	0	0	2	71
Makerfield	29	46	5	17	3	0	0	0	66
Maldon	66	17	13	0	4	0	0	0	74
Manchester Central	15	65	7	6	5	0	0	1	52
Manchester, Gorton	13	65	10	6	7	0	0	0	59
Manchester, Withington	12	62	18	3	5	0	0	0	68
Mansfield	60	34	4	0	0	0	0	2	67
Meon Valley	60	12	24	0	4	0	0	0	76
Meriden	60	25	10	0	6	0	0	0	69
Mid Bedfordshire	55	24	15	0	4	0	0	3	75
Mid Derbyshire	56	32	8	0	4	0	0	0	75
Mid Dorset and North Poole	55	7	35	0	3	0	0	0	78
Mid Norfolk	58	26	13	0	0	0	0	3	72
Mid Sussex	52	18	24	0	4	0	0	2	76
Mid Worcestershire	60	17	16	0	4	0	0	2	75
Middlesbrough	25	49	5	15	3	0	0	3	58
Middlesbrough South and East Cleveland	55	38	4	0	2	0	0	0	68
Milton Keynes North	47	45	5	0	3	0	0	0	71
Milton Keynes South	48	43	5	0	3	0	0	1	68
Mitcham and Morden	23	60	9	3	4	0	0	1	68
Mole Valley	52	8	33	0	4	0	0	3	80
Morecambe and Lunesdale	48	43	5	0	2	0	0	2	71
Morley and Outwood	53	39	5	0	2	0	0	1	71
New Forest East	56	18	20	0	5	0	0	3	75
New Forest West	63	15	17	0	5	0	0	0	76
Newark	59	28	9	0	3	0	0	0	73
Newbury	53	7	34	0	4	0	0	2	75
Newcastle upon Tyne Central	21	58	7	10	3	0	0	0	64
Newcastle upon Tyne East	26	58	10	0	6	0	0	0	62

	Con	Lab	LD	Brexit	Green	SNP	PC	Other	Turnout
Newcastle upon Tyne North	32	46	9	11	3	0	0	0	72
Newcastle-under-Lyme	48	37	5	7	2	0	0	0	68
Newton Abbot	52	17	25	0	3	0	0	2	74
Normanton, Pontefract and Castleford	29	45	5	18	0	0	0	3	67
North Cornwall	55	8	35	0	0	0	0	2	75
North Devon	54	8	34	0	3	0	0	2	74
North Dorset	60	14	22	0	4	0	0	0	77
North Durham	29	44	8	14	3	0	0	2	66
North East Bedfordshire	57	24	12	0	3	0	0	3	74
North East Cambridgeshire	66	21	8	0	5	0	0	0	67
North East Derbyshire	57	36	4	0	2	0	0	0	72
North East Hampshire	55	9	30	0	3	0	0	2	79
North East Hertfordshire	53	23	18	0	6	0	0	0	77
North East Somerset	49	29	17	0	3	0	0	2	77
North Herefordshire	59	16	18	0	7	0	0	0	76
North Norfolk	52	6	37	6	0	0	0	0	75
North Shropshire	56	25	13	0	4	0	0	2	71
North Somerset	54	23	19	0	4	0	0	0	77
North Swindon	54	37	7	0	3	0	0	0	71
North Thanet	60	30	7	0	3	0	0	0	70
North Tyneside	28	50	7	12	3	0	0	0	67
North Warwickshire	59	32	6	0	3	0	0	0	68
North West Cambridgeshire	57	28	10	0	4	0	0	0	71
North West Durham	38	41	6	11	3	0	0	2	69
North West Hampshire	59	18	19	0	4	0	0	0	74
North West Leicestershire	56	30	9	0	4	0	0	2	73
North West Norfolk	60	30	6	0	4	0	0	0	70
North Wiltshire	56	10	31	0	3	0	0	0	77
Northampton North	52	41	5	0	2	0	0	0	70
Northampton South	53	39	5	0	2	0	0	0	64
Norwich North	46	43	7	0	3	0	0	1	70
Norwich South	28	56	8	4	4	0	0	0	67
Nottingham East	17	58	4	8	3	0	0	9	60
Nottingham North	30	50	5	12	3	0	0	0	58
Nottingham South	31	54	6	6	3	0	0	0	62
Nuneaton	55	38	4	0	2	0	0	0	69
Old Bexley and Sidcup	59	26	9	0	3	0	0	3	75
Oldham East and Saddleworth	39	44	5	8	2	0	0	2	67
Oldham West and Royton	29	50	5	11	3	0	0	2	65
Orpington	57	19	20	0	4	0	0	0	76
Oxford East	16	59	14	3	6	0	0	1	67
Oxford West and Abingdon	38	7	53	2	0	0	0	0	80
Pendle	54	38	4	0	2	0	0	2	67
Penistone and Stocksbridge	48	35	8	10	0	0	0	0	73

	Con	Lab	LD	Brexit	Green	SNP	PC	Other	Turnout
Penrith and The Border	55	23	15	0	4	0	0	3	71
Peterborough	48	40	4	4	2	0	0	1	69
Plymouth, Moor View	57	37	4	0	2	0	0	0	68
Plymouth, Sutton and Devonport	39	48	3	8	2	0	0	0	58
Poole	55	24	16	0	4	0	0	2	71
Poplar and Limehouse	18	55	17	4	5	0	0	2	65
Portsmouth North	57	31	7	0	3	0	0	2	69
Portsmouth South	36	47	12	4	0	0	0	1	64
Preston	22	57	6	12	3	0	0	0	63
Pudsey	48	43	5	0	2	0	0	2	75
Putney	36	43	17	0	4	0	0	0	71
Rayleigh and Wickford	67	19	11	0	3	0	0	0	73
Reading East	39	47	8	2	3	0	0	1	73
Reading West	47	42	8	0	3	0	0	0	71
Redcar	37	40	6	13	2	0	0	2	66
Redditch	57	35	6	0	3	0	0	0	71
Reigate	52	19	21	0	5	0	0	2	75
Ribble Valley	53	31	9	0	4	0	0	2	76
Richmond (Yorks)	60	20	12	0	5	0	0	3	73
Richmond Park	40	5	55	0	0	0	0	1	79
Rochdale	27	50	7	12	3	0	0	0	66
Rochester and Strood	57	31	6	0	3	0	0	2	69
Rochford and Southend East	54	35	7	0	0	0	0	3	66
Romford	63	26	8	0	3	0	0	0	67
Romsey and Southampton North	53	11	35	0	0	0	0	2	75
Rossendale and Darwen	55	38	4	0	3	0	0	0	69
Rother Valley	42	35	4	15	2	0	0	2	69
Rotherham	29	43	6	20	0	0	0	3	64
Rugby	52	37	8	0	3	0	0	0	75
Ruislip, Northwood and Pinner	51	29	14	0	3	0	0	2	74
Runnymede and Weybridge	53	22	17	0	5	0	0	2	72
Rushcliffe	46	39	13	0	0	0	0	2	80
Rutland and Melton	58	18	17	0	5	0	0	3	74
Saffron Walden	60	15	21	0	3	0	0	0	76
Salford and Eccles	26	54	6	9	4	0	0	0	61
Salisbury	54	21	19	0	4	0	0	2	76
Scarborough and Whitby	54	40	4	0	0	0	0	3	71
Scunthorpe	46	40	4	8	2	0	0	0	66
Sedgefield	43	38	4	11	3	0	0	2	67
Sefton Central	31	53	5	8	2	0	0	2	75
Selby and Ainsty	57	31	7	0	3	0	0	2	72
Sevenoaks	55	17	20	0	5	0	0	3	73
Sheffield Central	16	59	7	6	10	0	0	2	60
Sheffield South East	31	49	7	12	0	0	0	2	65

	Con	Lab	LD	Brexit	Green	SNP	PC	Other	Turnout
Sheffield, Brightside and Hillsborough	22	54	5	11	5	0	0	2	59
Sheffield, Hallam	23	31	36	5	3	0	0	1	74
Sheffield, Heeley	30	49	7	10	5	0	0	0	65
Sherwood	54	37	5	0	2	0	0	2	72
Shipley	47	43	6	0	2	0	0	2	72
Shrewsbury and Atcham	49	38	9	0	3	0	0	2	74
Sittingbourne and Sheppey	59	27	7	0	2	0	0	4	69
Skipton and Ripon	56	22	12	0	7	0	0	3	76
Sleaford and North Hykeham	66	20	9	0	3	0	0	3	75
Slough	33	53	6	4	3	0	0	0	61
Solihull	54	16	27	0	4	0	0	0	75
Somerton and Frome	57	11	27	0	5	0	0	0	76
South Basildon and East Thurrock	63	28	7	0	0	0	0	3	68
South Cambridgeshire	42	14	44	0	0	0	0	0	78
South Derbyshire	56	32	8	0	4	0	0	0	72
South Dorset	53	33	8	0	4	0	0	2	73
South East Cambridgeshire	50	18	31	0	0	0	0	1	74
South East Cornwall	55	19	20	0	4	0	0	2	78
South Holland and The Deepings	71	14	7	0	5	0	0	2	71
South Leicestershire	64	23	10	0	4	0	0	0	73
South Norfolk	55	27	13	0	4	0	0	0	75
South Northamptonshire	58	22	14	0	4	0	0	1	76
South Ribble	55	35	6	0	3	0	0	0	73
South Shields	23	44	6	19	4	0	0	3	65
South Staffordshire	66	20	10	0	5	0	0	0	73
South Suffolk	58	23	13	0	5	0	0	0	76
South Swindon	50	44	7	0	0	0	0	0	72
South Thanet	56	37	4	0	3	0	0	0	74
South West Bedfordshire	56	30	11	0	3	0	0	0	72
South West Devon	60	26	10	0	4	0	0	0	76
South West Hertfordshire	52	13	9	0	1	0	0	24	77
South West Norfolk	62	21	10	0	4	0	0	3	70
South West Surrey	53	11	36	0	0	0	0	0	78
South West Wiltshire	56	25	15	0	4	0	0	0	74
Southampton, Itchen	49	40	6	0	3	0	0	2	65
Southampton, Test	32	52	6	4	3	0	0	1	66
Southend West	57	32	9	0	0	0	0	2	72
Southport	47	35	18	0	0	0	0	0	68
Spelthorne	57	26	13	0	3	0	0	0	73
St Albans	38	9	50	0	2	0	0	1	78
St Austell and Newquay	55	25	15	0	3	0	0	2	68
St Helens North	26	48	5	16	5	0	0	0	68
St Helens South and Whiston	19	54	6	14	5	0	0	2	66
St Ives	49	8	40	0	2	0	0	2	80

	Con	Lab	LD	Brexit	Green	SNP	PC	Other	Turnout
Stafford	53	37	6	0	3	0	0	0	74
Staffordshire Moorlands	59	30	9	0	3	0	0	0	73
Stalybridge and Hyde	38	44	4	9	3	0	0	2	61
Stevenage	50	37	9	0	3	0	0	0	71
Stockport	29	50	9	7	4	0	0	0	67
Stockton North	37	44	4	13	0	0	0	2	65
Stockton South	46	45	4	6	0	0	0	0	71
Stoke-on-Trent Central	42	42	3	10	2	0	0	0	60
Stoke-on-Trent North	47	38	3	8	2	0	0	1	63
Stoke-on-Trent South	58	38	4	0	0	0	0	0	66
Stone	64	23	10	0	3	0	0	0	75
Stourbridge	55	34	6	0	2	0	0	2	70
Stratford-on-Avon	56	14	26	0	3	0	0	0	77
Streatham	15	52	23	2	8	0	0	0	67
Stretford and Urmston	27	59	7	5	3	0	0	0	71
Stroud	45	47	0	3	4	0	0	1	77
Suffolk Coastal	54	25	15	0	5	0	0	2	76
Sunderland Central	30	46	5	14	3	0	0	2	64
Surrey Heath	56	12	26	0	4	0	0	2	77
Sutton and Cheam	51	10	37	0	2	0	0	0	74
Sutton Coldfield	57	28	12	0	3	0	0	0	72
Tamworth	59	29	7	0	3	0	0	2	69
Tatton	57	24	16	0	4	0	0	0	74
Taunton Deane	51	7	39	0	0	0	0	3	74
Telford	55	40	5	0	0	0	0	0	68
Tewkesbury	58	19	18	0	5	0	0	0	75
The Cotswolds	55	12	28	0	4	0	0	0	75
The Wrekin	60	31	6	0	3	0	0	0	72
Thirsk and Malton	58	22	12	0	4	0	0	3	74
Thornbury and Yate	53	7	40	0	0	0	0	0	77
Thurrock	57	33	4	0	2	0	0	3	67
Tiverton and Honiton	56	24	12	0	5	0	0	2	75
Tonbridge and Malling	63	18	15	0	5	0	0	0	76
Tooting	28	54	12	2	4	0	0	1	73
Torbay	59	11	25	0	3	0	0	3	72
Torridge and West Devon	53	19	21	0	4	0	0	2	76
Totnes	52	16	29	0	0	0	0	3	75
Tottenham	12	72	8	3	5	0	0	2	65
Truro and Falmouth	47	39	10	0	2	0	0	2	75
Tunbridge Wells	51	20	26	0	0	0	0	3	74
Twickenham	33	5	60	1	0	0	0	0	79
Tynemouth	39	46	6	6	2	0	0	0	73
Uxbridge and South Ruislip	51	40	6	0	3	0	0	2	68
Vauxhall	14	58	19	2	6	0	0	1	64

	Con	Lab	LD	Brexit	Green	SNP	PC	Other	Turnout
Wakefield	48	39	4	8	0	0	0	2	68
Wallasey	24	57	6	9	3	0	0	0	68
Walsall North	58	34	4	0	3	0	0	0	61
Walsall South	40	44	4	7	3	0	0	2	67
Walthamstow	15	69	6	3	5	0	0	1	65
Wansbeck	36	44	8	8	3	0	0	2	69
Wantage	46	19	32	0	0	0	0	3	73
Warley	27	53	5	11	4	0	0	0	64
Warrington North	38	47	5	7	2	0	0	0	68
Warrington South	43	45	6	4	0	0	0	1	73
Warwick and Leamington	43	45	6	2	2	0	0	1	73
Washington and Sunderland West	30	42	6	18	3	0	0	2	62
Watford	45	41	13	0	0	0	0	2	70
Waveney	57	31	5	0	4	0	0	2	69
Wealden	60	18	18	0	4	0	0	0	76
Weaver Vale	44	46	4	4	2	0	0	0	72
Wellingborough	59	30	7	0	3	0	0	0	70
Wells	49	8	41	0	0	0	0	1	75
Welwyn Hatfield	53	34	11	0	3	0	0	0	72
Wentworth and Dearne	32	43	6	16	0	0	0	3	63
West Bromwich East	41	41	5	8	2	0	0	2	61
West Bromwich West	42	39	4	12	2	0	0	0	59
West Dorset	52	11	33	0	4	0	0	0	74
West Ham	17	65	9	4	4	0	0	1	62
West Lancashire	38	48	5	7	2	0	0	0	72
West Suffolk	61	26	9	0	4	0	0	0	70
West Worcestershire	57	21	18	0	4	0	0	0	77
Westminster North	30	52	12	2	3	0	0	1	67
Westmorland and Lonsdale	41	4	51	4	0	0	0	0	78
Weston-Super-Mare	55	31	11	0	3	0	0	0	69
Wigan	27	44	6	19	3	0	0	0	65
Wimbledon	43	25	31	0	0	0	0	1	76
Winchester	47	5	47	0	0	0	0	1	79
Windsor	54	18	23	0	4	0	0	2	76
Wirral South	40	49	6	4	2	0	0	0	76
Wirral West	41	48	4	5	2	0	0	0	76
Witham	60	22	13	0	5	0	0	0	73
Witney	54	14	32	0	0	0	0	0	77
Woking	50	18	28	0	3	0	0	2	74
Wokingham	46	8	40	0	4	0	0	1	78
Wolverhampton North East	46	40	4	7	3	0	0	0	62
Wolverhampton South East	36	47	5	10	2	0	0	0	62
Wolverhampton South West	47	46	3	4	0	0	0	0	70
Worcester	48	41	6	0	3	0	0	1	70

	Con	Lab	LD	Brexit	Green	SNP	PC	Other	Turnout
Workington	42	42	5	9	2	0	0	1	70
Worsley and Eccles South	41	44	5	7	3	0	0	0	62
Worthing West	55	30	9	0	4	0	0	3	73
Wycombe	46	39	11	0	3	0	0	2	70
Wyre and Preston North	54	33	8	0	4	0	0	2	75
Wyre Forest	60	28	9	0	3	0	0	0	72
Wythenshawe and Sale East	27	55	6	7	3	0	0	1	62
Yeovil	54	8	33	0	3	0	0	2	74
York Central	26	55	9	5	4	0	0	1	66
York Outer	46	35	17	0	0	0	0	2	76
Aberdeen North	17	20	8	4	4	47	0	0	60
Aberdeen South	41	10	9	0	0	40	0	0	69
Airdrie and Shotts	23	30	5	0	2	40	0	0	59
Angus	45	5	6	0	0	45	0	0	65
Argyll and Bute	35	6	18	0	0	41	0	0	72
Ayr, Carrick and Cumnock	42	11	5	0	0	42	0	0	66
Banff and Buchan	47	4	5	0	0	43	0	0	65
Berwickshire, Roxburgh and Selkirk	49	6	9	0	0	37	0	0	73
Caithness, Sutherland and Easter Ross	19	4	39	5	0	33	0	0	69
Central Ayrshire	37	15	7	0	0	40	0	0	66
Coatbridge, Chryston and Bellshill	13	43	3	0	2	39	0	0	63
Cumbernauld, Kilsyth and Kirkintilloch East	21	29	5	0	0	45	0	0	68
Dumfries and Galloway	47	10	6	0	0	38	0	0	70
Dumfriesshire, Clydesdale and Tweeddale	46	10	8	0	0	36	0	0	72
Dundee East	26	14	8	0	0	50	0	2	66
Dundee West	17	27	6	5	0	43	0	2	60
Dunfermline and West Fife	24	27	9	0	3	37	0	0	67
East Dunbartonshire	15	7	40	0	3	34	0	1	78
East Kilbride, Strathaven and Lesmahagow	24	22	7	0	2	43	0	1	67
East Lothian	26	35	7	0	0	31	0	1	71
East Renfrewshire	39	11	10	0	0	40	0	0	76
Edinburgh East	16	29	8	0	5	43	0	0	66
Edinburgh North and Leith	21	23	10	1	5	39	0	1	70
Edinburgh South	16	50	7	0	3	23	0	0	74
Edinburgh South West	27	12	11	2	4	43	0	1	71
Edinburgh West	17	9	41	0	3	30	0	0	75
Na h-Eileanan an Iar	18	29	4	0	0	48	0	0	69
Falkirk	31	12	7	0	3	48	0	0	68
Glasgow Central	12	30	8	0	5	44	0	0	58
Glasgow East	17	36	5	0	0	42	0	0	52
Glasgow North	13	26	7	2	6	46	0	0	62
Glasgow North East	11	40	3	0	0	45	0	0	52
Glasgow North West	15	30	7	0	0	48	0	0	60
Glasgow South	16	25	6	2	3	48	0	0	64

	Con	Lab	LD	Brexit	Green	SNP	PC	Other	Turnout
Glasgow South West	15	32	4	3	0	45	0	0	56
Glenrothes	20	22	6	3	0	48	0	0	61
Gordon	40	7	12	0	0	40	0	0	70
Inverclyde	20	31	6	0	0	42	0	0	66
Inverness, Nairn, Badenoch and Strathspey	29	7	12	3	3	47	0	0	68
Kilmarnock and Loudoun	28	17	5	0	0	48	0	2	63
Kirkcaldy and Cowdenbeath	23	37	5	3	4	28	0	0	65
Lanark and Hamilton East	36	22	6	0	0	36	0	0	66
Linlithgow and East Falkirk	27	20	7	4	3	38	0	1	67
Livingston	23	23	6	0	2	45	0	0	66
Midlothian	22	34	5	0	0	38	0	0	67
Moray	46	4	4	0	0	45	0	1	67
Motherwell and Wishaw	20	33	5	0	0	41	0	2	63
North Ayrshire and Arran	32	12	6	0	3	48	0	0	66
North East Fife	22	7	35	0	0	36	0	0	70
Ochil and South Perthshire	41	9	6	0	0	43	0	1	71
Orkney and Shetland	13	8	41	5	0	31	0	2	69
Paisley and Renfrewshire North	25	24	7	0	0	43	0	0	69
Paisley and Renfrewshire South	21	28	6	0	0	46	0	0	68
Perth and North Perthshire	40	5	8	2	0	45	0	0	75
Ross, Skye and Lochaber	20	6	22	4	0	46	0	1	74
Rutherglen and Hamilton West	16	37	5	0	0	41	0	1	63
Stirling	36	9	6	0	2	46	0	0	73
West Aberdeenshire and Kincardine	45	5	11	0	0	39	0	0	67
West Dunbartonshire	17	32	5	0	3	42	0	1	65
Ynys Mn	27	32	0	10	0	0	31	0	73
Delyn	43	44	4	5	0	0	3	0	73
Alyn and Deeside	42	45	4	6	0	0	3	0	71
Wrexham	44	42	3	5	2	0	4	0	70
Llanelli	28	52	0	8	0	0	13	0	69
Gower	43	47	4	3	0	0	3	0	74
Swansea West	30	54	5	6	0	0	5	0	65
Swansea East	23	54	6	10	2	0	4	0	62
Aberavon	21	47	4	14	3	0	9	3	68
Cardiff Central	18	66	11	3	0	0	0	2	69
Cardiff North	35	52	5	3	1	0	3	1	76
Rhondda	17	48	4	16	3	0	13	0	66
Torfaen	31	46	4	13	2	0	4	0	65
Monmouth	48	37	7	0	2	0	3	2	77
Newport East	37	47	4	7	2	0	3	0	67
Newport West	41	44	4	5	2	0	3	0	69
Arfon	16	33	0	4	0	0	46	0	69
Aberconwy	43	44	5	0	0	0	8	0	71
Clwyd West	48	38	5	0	0	0	8	0	70

	Con	Lab	LD	Brexit	Green	SNP	PC	Other	Turnout
Vale of Clwyd	46	44	3	4	0	0	3	0	68
Dwyfor Meirionnydd	29	11	0	10	0	0	50	0	70
Clwyd South	43	43	4	5	0	0	4	0	69
Montgomeryshire	56	15	26	0	0	0	0	3	71
Ceredigion	21	14	22	8	3	0	32	0	73
Preseli Pembrokeshire	51	42	3	0	0	0	4	0	73
Carmarthen West and Pembrokeshire South	51	38	3	0	0	0	7	0	73
Carmarthen East and Dinefwr	33	20	0	7	0	0	40	0	75
Brecon and Radnorshire	49	12	36	0	0	0	0	3	76
Neath	25	48	3	10	2	0	10	2	70
Cynon Valley	18	46	4	17	0	0	12	3	62
Merthyr Tydfil and Rhymney	19	48	4	17	0	0	9	3	64
Blaenau Gwent	19	47	4	20	3	0	8	0	65
Bridgend	42	44	4	5	2	0	3	0	71
Ogmore	25	50	4	12	3	0	7	0	66
Pontypridd	26	46	0	9	0	0	16	4	67
Caerphilly	20	48	0	16	0	0	16	0	67
Islwyn	27	45	4	14	3	0	7	0	67
Vale of Glamorgan	48	45	0	0	6	0	0	1	72
Cardiff West	27	52	5	5	2	0	9	0	69
Cardiff South and Penarth	28	51	6	6	3	0	6	0	65

SEAT GAINS/LOSSES

Conservative gains/losses

Table 22: Possible Con gains

Constituency	Win17	P(ConWin)	Con	Lab	LD	Brexit	Green	SNP	PC	Other
Barrow and Furness	Lab	99%	51	36	5	6	2	0	0	0
North Norfolk	LD	99%	52	6	37	6	0	0	0	0
Penistone and Stocksbridge	Lab	98%	48	35	8	10	0	0	0	0
Derby North	Lab	97%	50	38	5	4	2	0	0	1
Dudley North	Lab	96%	53	38	3	0	2	0	0	5
Newcastle-under-Lyme	Lab	96%	48	37	5	7	2	0	0	0
Don Valley	Lab	94%	45	35	4	11	2	0	0	2
Ashfield	Lab	93%	44	34	4	11	2	0	0	5
Eastbourne	LD	93%	49	6	39	5	0	0	0	2
Bassetlaw	Lab	93%	47	37	5	12	0	0	0	0
Bishop Auckland	Lab	92%	49	40	3	7	0	0	0	0
Stoke-on-Trent North	Lab	91%	47	38	3	8	2	0	0	1
Wakefield	Lab	90%	48	39	4	8	0	0	0	2
Peterborough	Lab	89%	48	40	4	4	2	0	0	1
Ipswich	Lab	87%	48	41	4	4	2	0	0	1
Bury South	Lab	86%	47	40	4	4	2	0	0	2
Darlington	Lab	86%	46	39	5	7	2	0	0	1
Blackpool South	Lab	85%	45	39	3	10	2	0	0	1
Rother Valley	Lab	85%	42	35	4	15	2	0	0	2
Colne Valley	Lab	84%	47	41	5	5	2	0	0	1
Wolverhampton North East	Lab	82%	46	40	4	7	3	0	0	0
Scunthorpe	Lab	79%	46	40	4	8	2	0	0	0
Sedgefield	Lab	78%	43	38	4	11	3	0	0	2
Great Grimsby	Lab	76%	44	40	3	10	2	0	0	1
Bolsover	Lab	76%	43	38	4	11	2	0	0	2
Crewe and Nantwich	Lab	71%	46	42	5	4	2	0	0	1
Keighley	Lab	68%	47	44	3	5	0	0	0	1
West Bromwich West	Lab	68%	42	39	4	12	2	0	0	0
Dagenham and Rainham	Lab	65%	43	40	4	10	2	0	0	1
Hyndburn	Lab	64%	44	42	3	10	2	0	0	0
Wrexham	Lab	64%	44	42	3	5	2	0	4	0
Vale of Clwyd	Lab	64%	46	44	3	4	0	0	3	0
Gedling	Lab	64%	45	43	5	5	2	0	0	0
Bolton North East	Lab	55%	44	44	4	7	2	0	0	0
Wolverhampton South West	Lab	55%	47	46	3	4	0	0	0	0
Workington	Lab	54%	42	42	5	9	2	0	0	1
Kensington	Lab	53%	38	38	19	2	2	0	0	1
Stockton South	Lab	52%	46	45	4	6	0	0	0	0

Constituency	Win17	P(ConWin)	Con	Lab	LD	Brexit	Green	SNP	PC	Other
Stoke-on-Trent Central	Lab	51%	42	42	3	10	2	0	0	0
West Bromwich East	Lab	50%	41	41	5	8	2	0	0	2
Lanark and Hamilton East	SNP	50%	36	22	6	0	0	36	0	0
Dewsbury	Lab	48%	44	44	4	5	2	0	0	1
Clwyd South	Lab	47%	43	43	4	5	0	0	4	0
Lincoln	Lab	43%	44	45	3	5	2	0	0	1
Warrington South	Lab	42%	43	45	6	4	0	0	0	1
Delyn	Lab	41%	43	44	4	5	0	0	3	0
Weaver Vale	Lab	40%	44	46	4	4	2	0	0	0
Bedford	Lab	40%	42	44	8	3	3	0	0	0
Warwick and Leamington	Lab	40%	43	45	6	2	2	0	0	1
Stroud	Lab	37%	45	47	0	3	4	0	0	1
Birmingham, Northfield	Lab	36%	42	44	5	5	2	0	0	1
Coventry North West	Lab	35%	41	44	7	6	3	0	0	0
Redcar	Lab	35%	37	40	6	13	2	0	0	2
Bridgend	Lab	35%	42	44	4	5	2	0	3	0
Central Ayrshire	SNP	34%	37	15	7	0	0	40	0	0
Bury North	Lab	34%	43	45	4	6	2	0	0	0
Coventry South	Lab	33%	41	44	6	5	3	0	0	1
Worsley and Eccles South	Lab	32%	41	44	5	7	3	0	0	0
North West Durham	Lab	32%	38	41	6	11	3	0	0	2
Newport West	Lab	31%	41	44	4	5	2	0	3	0
Alyn and Deeside	Lab	30%	42	45	4	6	0	0	3	0
Walsall South	Lab	28%	40	44	4	7	3	0	0	2
Gower	Lab	28%	43	47	4	3	0	0	3	0
Leigh	Lab	27%	40	44	5	10	0	0	0	2
Perth and North Perthshire	SNP	26%	40	5	8	2	0	45	0	0
Lancaster and Fleetwood	Lab	24%	41	45	4	7	3	0	0	0
Bradford South	Lab	23%	40	44	4	10	2	0	0	0
Halifax	Lab	23%	40	45	4	9	2	0	0	0
Oldham East and Saddleworth	Lab	22%	39	44	5	8	2	0	0	2
Hartlepool	Lab	21%	32	37	5	24	0	0	0	2
Blyth Valley	Lab	20%	39	45	7	7	3	0	0	0
Argyll and Bute	SNP	20%	35	6	18	0	0	41	0	0
Carshalton and Wallington	LD	19%	40	7	46	4	2	0	0	1
Stalybridge and Hyde	Lab	19%	38	44	4	9	3	0	0	2
Carmarthen East and Dinefwr	PC	19%	33	20	0	7	0	0	40	0
Batley and Spen	Lab	18%	39	45	5	7	2	0	0	2
Stockton North	Lab	18%	37	44	4	13	0	0	0	2
Erith and Thamesmead	Lab	17%	38	44	8	6	3	0	0	2
High Peak	Lab	15%	41	47	6	4	2	0	0	0
Wirral West	Lab	14%	41	48	4	5	2	0	0	0
Enfield, Southgate	Lab	14%	42	49	5	2	2	0	0	0
Chesterfield	Lab	13%	37	44	7	8	3	0	0	2

Constituency	Win17	P(ConWin)	Con	Lab	LD	Brexit	Green	SNP	PC	Other
Ynys Mn	Lab	12%	27	32	0	10	0	0	31	0
Tynemouth	Lab	12%	39	46	6	6	2	0	0	0
Burnley	Lab	12%	32	40	8	16	2	0	0	2
Heywood and Middleton	Lab	11%	37	45	4	13	2	0	0	0
Eltham	Lab	11%	39	47	7	4	2	0	0	0
Wansbeck	Lab	10%	36	44	8	8	3	0	0	2

Table 23: Possible Con losses

Constituency	Win17	P(ConWin)	Con	Lab	LD	Brexit	Green	SNP	PC	Other
Richmond Park	Con	1%	40	5	55	0	0	0	0	1
St Albans	Con	3%	38	9	50	0	2	0	0	1
Stirling	Con	11%	36	9	6	0	2	46	0	0
Putney	Con	14%	36	43	17	0	4	0	0	0
Chipping Barnet	Con	32%	42	45	9	0	2	0	0	1
South Cambridgeshire	Con	39%	42	14	44	0	0	0	0	0
Ochil and South Perthshire	Con	41%	41	9	6	0	0	43	0	1
East Renfrewshire	Con	46%	39	11	10	0	0	40	0	0
Hendon	Con	47%	44	44	10	0	2	0	0	0
Aberconwy	Con	47%	43	44	5	0	0	0	8	0
Angus	Con	49%	45	5	6	0	0	45	0	0
Winchester	Con	51%	47	5	47	0	0	0	0	1
Aberdeen South	Con	51%	41	10	9	0	0	40	0	0
Gordon	Con	51%	40	7	12	0	0	40	0	0
Ayr, Carrick and Cumnock	Con	51%	42	11	5	0	0	42	0	0
Moray	Con	58%	46	4	4	0	0	45	0	1
Norwich North	Con	63%	46	43	7	0	3	0	0	1
Vale of Glamorgan	Con	66%	48	45	0	0	6	0	0	1
Chingford and Woodford Green	Con	66%	47	45	8	0	0	0	0	0
Milton Keynes North	Con	66%	47	45	5	0	3	0	0	0
Cheltenham	Con	67%	48	6	45	0	0	0	0	1
Banff and Buchan	Con	69%	47	4	5	0	0	43	0	0
Shipley	Con	74%	47	43	6	0	2	0	0	2
Esher and Walton	Con	74%	47	8	43	0	0	0	0	2
Watford	Con	76%	45	41	13	0	0	0	0	2
Cheadle	Con	76%	48	9	43	0	0	0	0	0
Pudsey	Con	77%	48	43	5	0	2	0	0	2
Lewes	Con	77%	47	6	42	0	3	0	0	2
Hastings and Rye	Con	78%	48	43	7	0	0	0	0	2
West Aberdeenshire and Kincardine	Con	78%	45	5	11	0	0	39	0	0
East Devon	Con	78%	51	3	2	0	1	0	0	44
Harrow East	Con	79%	47	42	9	0	2	0	0	0
Milton Keynes South	Con	79%	48	43	5	0	3	0	0	1

Constituency	Win17	P(ConWin)	Con	Lab	LD	Brexit	Green	SNP	PC	Other
Guildford	Con	80%	44	10	39	0	0	0	0	7
Reading West	Con	80%	47	42	8	0	3	0	0	0
Morecambe and Lunesdale	Con	80%	48	43	5	0	2	0	0	2
Broxtowe	Con	81%	46	40	0	0	3	0	0	11
Crawley	Con	82%	48	43	7	0	3	0	0	0
Wokingham	Con	82%	46	8	40	0	4	0	0	1
Filton and Bradley Stoke	Con	82%	47	42	7	0	3	0	0	1
Loughborough	Con	83%	48	42	6	0	3	0	0	2
South Swindon	Con	85%	50	44	7	0	0	0	0	0
Calder Valley	Con	85%	50	43	5	0	0	0	0	2
Wycombe	Con	86%	46	39	11	0	3	0	0	2
Dumfries and Galloway	Con	86%	47	10	6	0	0	38	0	0
Hazel Grove	Con	87%	49	10	41	0	0	0	0	0
Worcester	Con	88%	48	41	6	0	3	0	0	1
Rushcliffe	Con	89%	46	39	13	0	0	0	0	2
Wells	Con	90%	49	8	41	0	0	0	0	1
Dumfriesshire, Clydesdale and Tweeddale	Con	90%	46	10	8	0	0	36	0	0

Table 24: Possible Lab gains

Constituency	Win17	P(LabWin)	Con	Lab	LD	Brexit	Green	SNP	PC	Other
Putney	Con	86%	36	43	17	0	4	0	0	0
Chipping Barnet	Con	68%	42	45	9	0	2	0	0	1
Hendon	Con	53%	44	44	10	0	2	0	0	0
Aberconwy	Con	53%	43	44	5	0	0	0	8	0
Norwich North	Con	37%	46	43	7	0	3	0	0	1
Vale of Glamorgan	Con	34%	48	45	0	0	6	0	0	1
Chingford and Woodford Green	Con	34%	47	45	8	0	0	0	0	0
Milton Keynes North	Con	34%	47	45	5	0	3	0	0	0
Shipley	Con	26%	47	43	6	0	2	0	0	2
Glasgow East	SNP	25%	17	36	5	0	0	42	0	0
Watford	Con	24%	45	41	13	0	0	0	0	2
Pudsey	Con	23%	48	43	5	0	2	0	0	2
Hastings and Rye	Con	22%	48	43	7	0	0	0	0	2
Harrow East	Con	21%	47	42	9	0	2	0	0	0
Milton Keynes South	Con	21%	48	43	5	0	3	0	0	1
Reading West	Con	20%	47	42	8	0	3	0	0	0
Morecambe and Lunesdale	Con	20%	48	43	5	0	2	0	0	2
Broxtowe	Con	19%	46	40	0	0	3	0	0	11
Crawley	Con	18%	48	43	7	0	3	0	0	0
Filton and Bradley Stoke	Con	18%	47	42	7	0	3	0	0	1
Loughborough	Con	17%	48	42	6	0	3	0	0	2
Motherwell and Wishaw	SNP	16%	20	33	5	0	0	41	0	2
South Swindon	Con	15%	50	44	7	0	0	0	0	0
Calder Valley	Con	15%	50	43	5	0	0	0	0	2
Wycombe	Con	14%	46	39	11	0	3	0	0	2
Worcester	Con	12%	48	41	6	0	3	0	0	1
Airdrie and Shotts	SNP	12%	23	30	5	0	2	40	0	0
West Dunbartonshire	SNP	11%	17	32	5	0	3	42	0	1
Rushcliffe	Con	11%	46	39	13	0	0	0	0	2
Inverclyde	SNP	11%	20	31	6	0	0	42	0	0

Table 25: Possible Lab losses

Constituency	Win17	P(LabWin)	Con	Lab	LD	Brexit	Green	SNP	PC	Other
Chorley	Lab	0%	0	0	0	0	16	0	0	84
Barrow and Furness	Lab	1%	51	36	5	6	2	0	0	0
Penistone and Stocksbridge	Lab	2%	48	35	8	10	0	0	0	0
Derby North	Lab	3%	50	38	5	4	2	0	0	1
Dudley North	Lab	4%	53	38	3	0	2	0	0	5

Constituency	Win17	P(LabWin)	Con	Lab	LD	Brexit	Green	SNP	PC	Other
Newcastle-under-Lyme	Lab	4%	48	37	5	7	2	0	0	0
Don Valley	Lab	6%	45	35	4	11	2	0	0	2
Ashfield	Lab	7%	44	34	4	11	2	0	0	5
Bassetlaw	Lab	7%	47	37	5	12	0	0	0	0
Bishop Auckland	Lab	8%	49	40	3	7	0	0	0	0
Stoke-on-Trent North	Lab	9%	47	38	3	8	2	0	0	1
Wakefield	Lab	10%	48	39	4	8	0	0	0	2
Peterborough	Lab	11%	48	40	4	4	2	0	0	1
Ipswich	Lab	13%	48	41	4	4	2	0	0	1
Bury South	Lab	14%	47	40	4	4	2	0	0	2
Darlington	Lab	14%	46	39	5	7	2	0	0	1
Blackpool South	Lab	15%	45	39	3	10	2	0	0	1
Rother Valley	Lab	15%	42	35	4	15	2	0	0	2
Colne Valley	Lab	16%	47	41	5	5	2	0	0	1
Wolverhampton North East	Lab	18%	46	40	4	7	3	0	0	0
Scunthorpe	Lab	21%	46	40	4	8	2	0	0	0
Sedgefield	Lab	22%	43	38	4	11	3	0	0	2
Sheffield, Hallam	Lab	23%	23	31	36	5	3	0	0	1
Great Grimsby	Lab	24%	44	40	3	10	2	0	0	1
Bolsover	Lab	24%	43	38	4	11	2	0	0	2
Crewe and Nantwich	Lab	29%	46	42	5	4	2	0	0	1
Rutherglen and Hamilton West	Lab	29%	16	37	5	0	0	41	0	1
Glasgow North East	Lab	30%	11	40	3	0	0	45	0	0
Midlothian	Lab	32%	22	34	5	0	0	38	0	0
Keighley	Lab	32%	47	44	3	5	0	0	0	1
West Bromwich West	Lab	32%	42	39	4	12	2	0	0	0
Dagenham and Rainham	Lab	35%	43	40	4	10	2	0	0	1
Hyndburn	Lab	36%	44	42	3	10	2	0	0	0
Wrexham	Lab	36%	44	42	3	5	2	0	4	0
Vale of Clwyd	Lab	36%	46	44	3	4	0	0	3	0
Gedling	Lab	36%	45	43	5	5	2	0	0	0
Bolton North East	Lab	45%	44	44	4	7	2	0	0	0
Wolverhampton South West	Lab	45%	47	46	3	4	0	0	0	0
Workington	Lab	46%	42	42	5	9	2	0	0	1
Kensington	Lab	47%	38	38	19	2	2	0	0	1
Stockton South	Lab	48%	46	45	4	6	0	0	0	0
Stoke-on-Trent Central	Lab	49%	42	42	3	10	2	0	0	0
West Bromwich East	Lab	50%	41	41	5	8	2	0	0	2
Ynys Mn	Lab	51%	27	32	0	10	0	0	31	0
Dewsbury	Lab	52%	44	44	4	5	2	0	0	1
Clwyd South	Lab	53%	43	43	4	5	0	0	4	0
Lincoln	Lab	57%	44	45	3	5	2	0	0	1
Warrington South	Lab	58%	43	45	6	4	0	0	0	1
Delyn	Lab	59%	43	44	4	5	0	0	3	0

Constituency	Win17	P(LabWin)	Con	Lab	LD	Brexit	Green	SNP	PC	Other
Weaver Vale	Lab	60%	44	46	4	4	2	0	0	0
Bedford	Lab	60%	42	44	8	3	3	0	0	0
Warwick and Leamington	Lab	60%	43	45	6	2	2	0	0	1
Stroud	Lab	63%	45	47	0	3	4	0	0	1
Coatbridge, Chryston and Bellshill	Lab	63%	13	43	3	0	2	39	0	0
Birmingham, Northfield	Lab	64%	42	44	5	5	2	0	0	1
Coventry North West	Lab	65%	41	44	7	6	3	0	0	0
East Lothian	Lab	65%	26	35	7	0	0	31	0	1
Redcar	Lab	65%	37	40	6	13	2	0	0	2
Bridgend	Lab	65%	42	44	4	5	2	0	3	0
Bury North	Lab	66%	43	45	4	6	2	0	0	0
Coventry South	Lab	67%	41	44	6	5	3	0	0	1
Worsley and Eccles South	Lab	68%	41	44	5	7	3	0	0	0
North West Durham	Lab	68%	38	41	6	11	3	0	0	2
Newport West	Lab	69%	41	44	4	5	2	0	3	0
Alyn and Deeside	Lab	70%	42	45	4	6	0	0	3	0
Walsall South	Lab	72%	40	44	4	7	3	0	0	2
Gower	Lab	72%	43	47	4	3	0	0	3	0
Leigh	Lab	73%	40	44	5	10	0	0	0	2
Lancaster and Fleetwood	Lab	76%	41	45	4	7	3	0	0	0
Bradford South	Lab	77%	40	44	4	10	2	0	0	0
Halifax	Lab	77%	40	45	4	9	2	0	0	0
Hartlepool	Lab	78%	32	37	5	24	0	0	0	2
Oldham East and Saddleworth	Lab	78%	39	44	5	8	2	0	0	2
Blyth Valley	Lab	80%	39	45	7	7	3	0	0	0
Stalybridge and Hyde	Lab	81%	38	44	4	9	3	0	0	2
Batley and Spen	Lab	82%	39	45	5	7	2	0	0	2
Stockton North	Lab	82%	37	44	4	13	0	0	0	2
Erith and Thamesmead	Lab	83%	38	44	8	6	3	0	0	2
High Peak	Lab	85%	41	47	6	4	2	0	0	0
Wirral West	Lab	86%	41	48	4	5	2	0	0	0
Kirkcaldy and Cowdenbeath	Lab	86%	23	37	5	3	4	28	0	0
Enfield, Southgate	Lab	86%	42	49	5	2	2	0	0	0
Chesterfield	Lab	87%	37	44	7	8	3	0	0	2
Tynemouth	Lab	88%	39	46	6	6	2	0	0	0
Burnley	Lab	88%	32	40	8	16	2	0	0	2
Heywood and Middleton	Lab	89%	37	45	4	13	2	0	0	0
Eltham	Lab	89%	39	47	7	4	2	0	0	0
Wansbeck	Lab	90%	36	44	8	8	3	0	0	2

Table 26: Possible LD gains

Constituency	Win17	P(LDWin)	Con	Lab	LD	Brexit	Green	SNP	PC	Other
Richmond Park	Con	99%	40	5	55	0	0	0	0	1
St Albans	Con	97%	38	9	50	0	2	0	0	1
Sheffield, Hallam	Lab	76%	23	31	36	5	3	0	0	1
South Cambridgeshire	Con	61%	42	14	44	0	0	0	0	0
Winchester	Con	49%	47	5	47	0	0	0	0	1
North East Fife	SNP	40%	22	7	35	0	0	36	0	0
Cheltenham	Con	33%	48	6	45	0	0	0	0	1
Esher and Walton	Con	26%	47	8	43	0	0	0	0	2
Cheadle	Con	24%	48	9	43	0	0	0	0	0
Lewes	Con	23%	47	6	42	0	3	0	0	2
Guildford	Con	20%	44	10	39	0	0	0	0	7
Wokingham	Con	18%	46	8	40	0	4	0	0	1
Hazel Grove	Con	13%	49	10	41	0	0	0	0	0
Wells	Con	10%	49	8	41	0	0	0	0	1

Table 27: Possible LD losses

Constituency	Win17	P(LDWin)	Con	Lab	LD	Brexit	Green	SNP	PC	Other
North Norfolk	LD	1%	52	6	37	6	0	0	0	0
Eastbourne	LD	7%	49	6	39	5	0	0	0	2
Caithness, Sutherland and Easter Ross	LD	74%	19	4	39	5	0	33	0	0
East Dunbartonshire	LD	76%	15	7	40	0	3	34	0	1
Carshalton and Wallington	LD	81%	40	7	46	4	2	0	0	1
Orkney and Shetland	LD	88%	13	8	41	5	0	31	0	2

Table 28: Possible SNP gains

Constituency	Win17	P(SNPWin)	Con	Lab	LD	Brexit	Green	SNP	PC	Other
Stirling	Con	89%	36	9	6	0	2	46	0	0
Rutherglen and Hamilton West	Lab	71%	16	37	5	0	0	41	0	1
Glasgow North East	Lab	70%	11	40	3	0	0	45	0	0
Midlothian	Lab	68%	22	34	5	0	0	38	0	0
Ochil and South Perthshire	Con	59%	41	9	6	0	0	43	0	1
East Renfrewshire	Con	54%	39	11	10	0	0	40	0	0
Angus	Con	51%	45	5	6	0	0	45	0	0
Aberdeen South	Con	49%	41	10	9	0	0	40	0	0
Gordon	Con	49%	40	7	12	0	0	40	0	0
Ayr, Carrick and Cumnock	Con	49%	42	11	5	0	0	42	0	0
Moray	Con	42%	46	4	4	0	0	45	0	1
Coatbridge, Chryston and Bellshill	Lab	37%	13	43	3	0	2	39	0	0
East Lothian	Lab	33%	26	35	7	0	0	31	0	1
Banff and Buchan	Con	31%	47	4	5	0	0	43	0	0
Caithness, Sutherland and Easter Ross	LD	26%	19	4	39	5	0	33	0	0
East Dunbartonshire	LD	24%	15	7	40	0	3	34	0	1
West Aberdeenshire and Kincardine	Con	22%	45	5	11	0	0	39	0	0
Dumfries and Galloway	Con	14%	47	10	6	0	0	38	0	0
Kirkcaldy and Cowdenbeath	Lab	14%	23	37	5	3	4	28	0	0
Orkney and Shetland	LD	12%	13	8	41	5	0	31	0	2
Dumfriesshire, Clydesdale and Tweeddale	Con	10%	46	10	8	0	0	36	0	0

Table 29: Possible SNP losses

Constituency	Win17	P(SNPWin)	Con	Lab	LD	Brexit	Green	SNP	PC	Other
Lanark and Hamilton East	SNP	50%	36	22	6	0	0	36	0	0
North East Fife	SNP	60%	22	7	35	0	0	36	0	0
Central Ayrshire	SNP	66%	37	15	7	0	0	40	0	0
Perth and North Perthshire	SNP	74%	40	5	8	2	0	45	0	0
Glasgow East	SNP	75%	17	36	5	0	0	42	0	0
Argyll and Bute	SNP	80%	35	6	18	0	0	41	0	0
Motherwell and Wishaw	SNP	84%	20	33	5	0	0	41	0	2
Airdrie and Shotts	SNP	88%	23	30	5	0	2	40	0	0
West Dunbartonshire	SNP	89%	17	32	5	0	3	42	0	1
Inverclyde	SNP	89%	20	31	6	0	0	42	0	0

Brexit Party gains/losses

Table 30: Possible Brexit gains

Constituency	Win17	P(BrexitWin)	Con	Lab	LD	Brexit	Green	SNP	PC	Other
--------------	-------	--------------	-----	-----	----	--------	-------	-----	----	-------

Table 31: Possible Brexit losses

Constituency	Win17	P(BrexitWin)	Con	Lab	LD	Brexit	Green	SNP	PC	Other
--------------	-------	--------------	-----	-----	----	--------	-------	-----	----	-------

Plaid Cymru gains/losses

Table 32: Possible PC gains

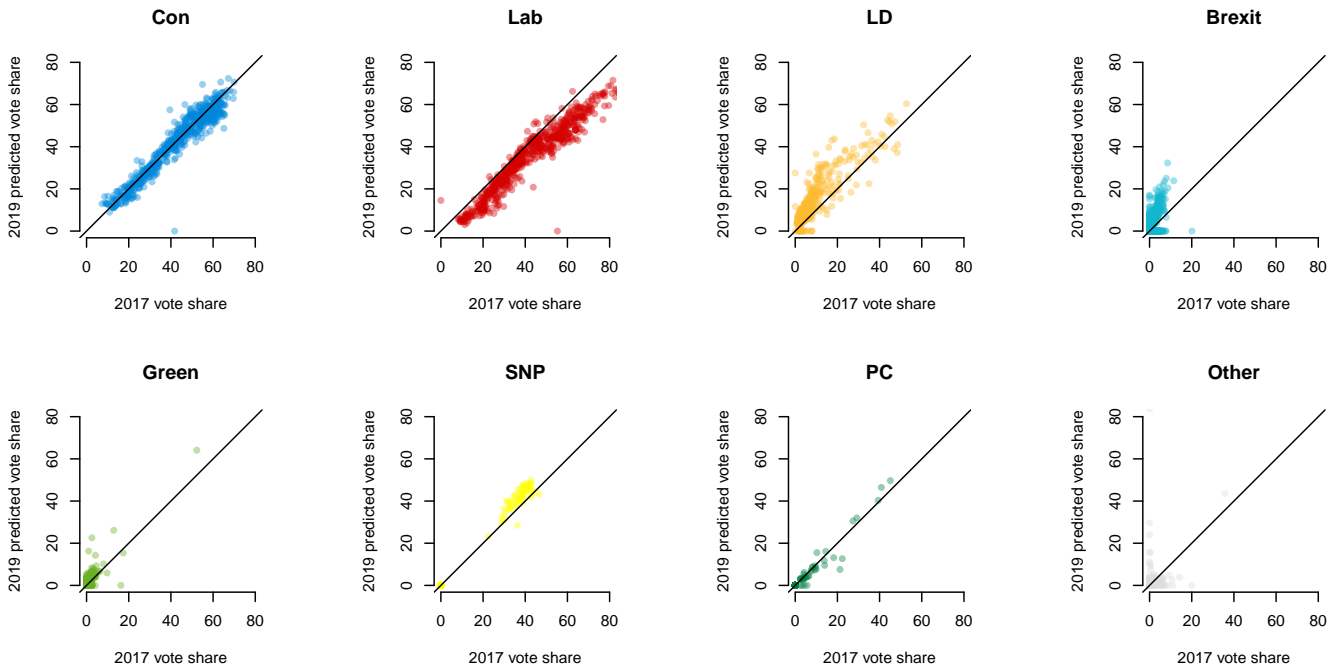
Constituency	Win17	P(PCWin)	Con	Lab	LD	Brexit	Green	SNP	PC	Other
Ynys Mn	Lab	37%	27	32	0	10	0	0	31	0

Table 33: Possible PC losses

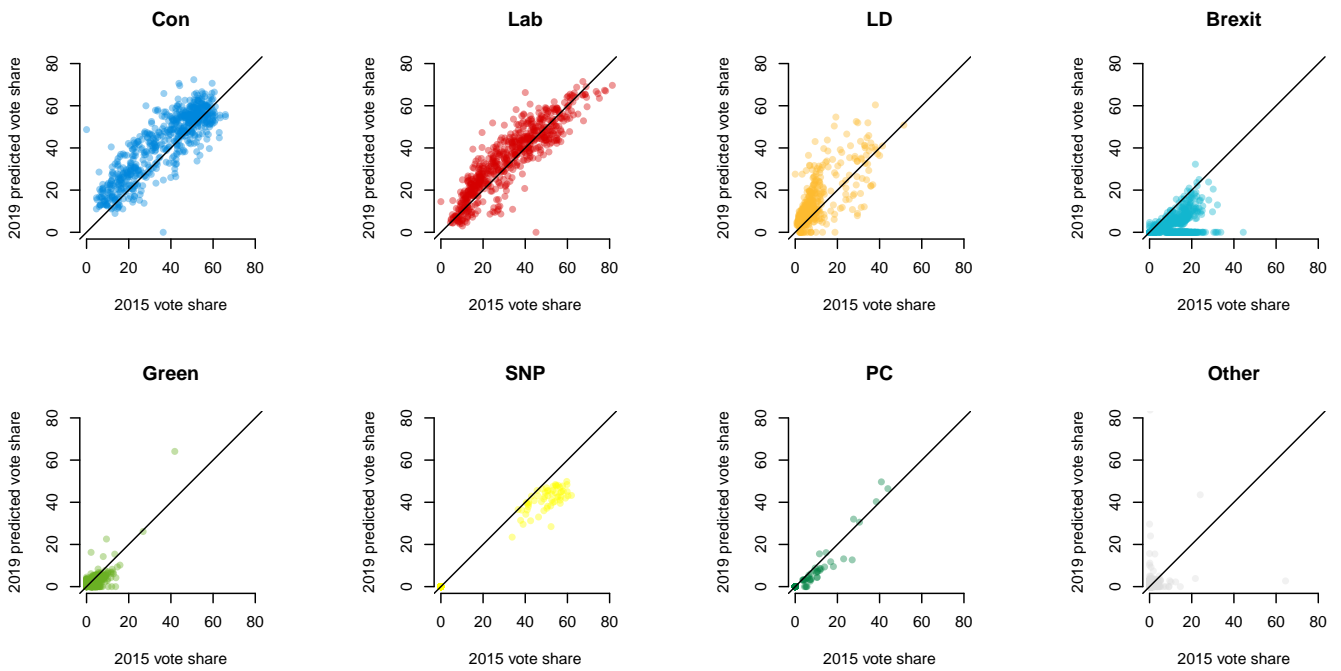
Constituency	Win17	P(PCWin)	Con	Lab	LD	Brexit	Green	SNP	PC	Other
Carmarthen East and Dinefwr	PC	81%	33	20	0	7	0	0	40	0
Ceredigion	PC	87%	21	14	22	8	3	0	32	0

FIGURES

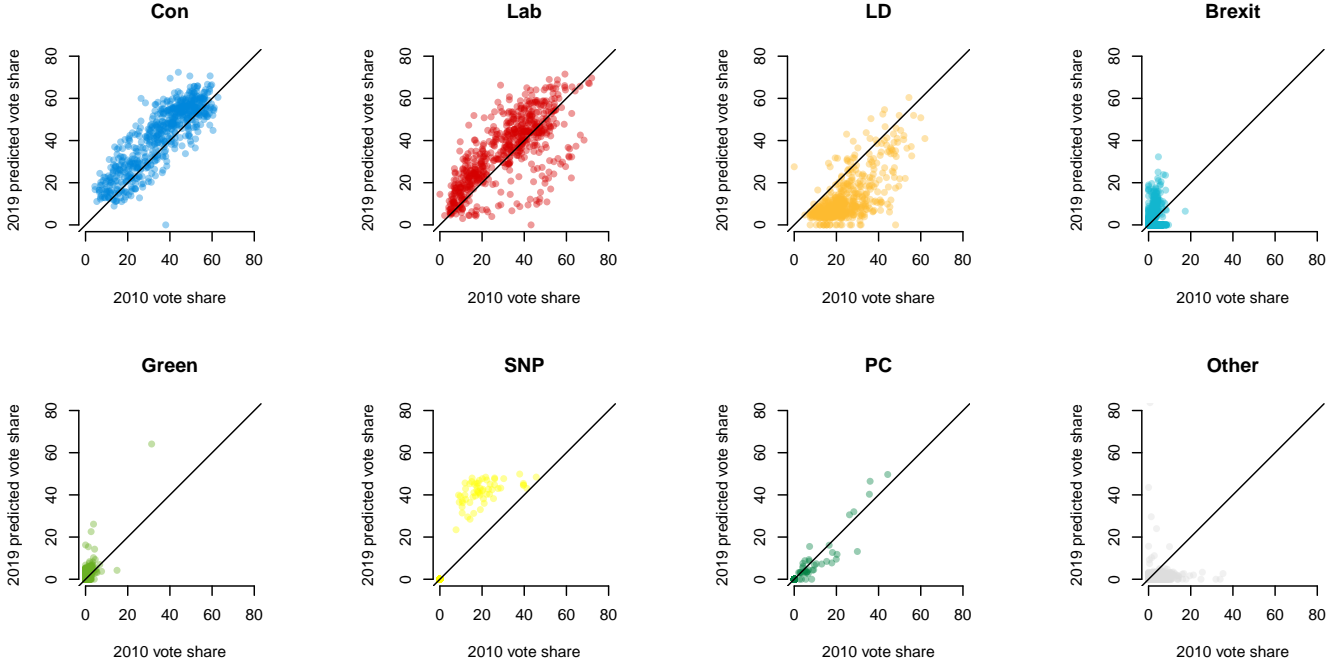
Constituency Vote Share by 2017 Constituency Vote Share



Constituency Vote Share by 2015 Constituency Vote Share

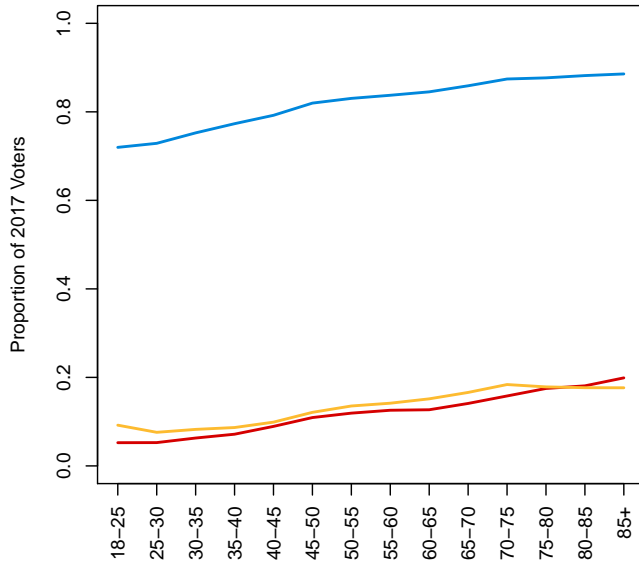


Constituency Vote Share by 2010 Constituency Vote Share

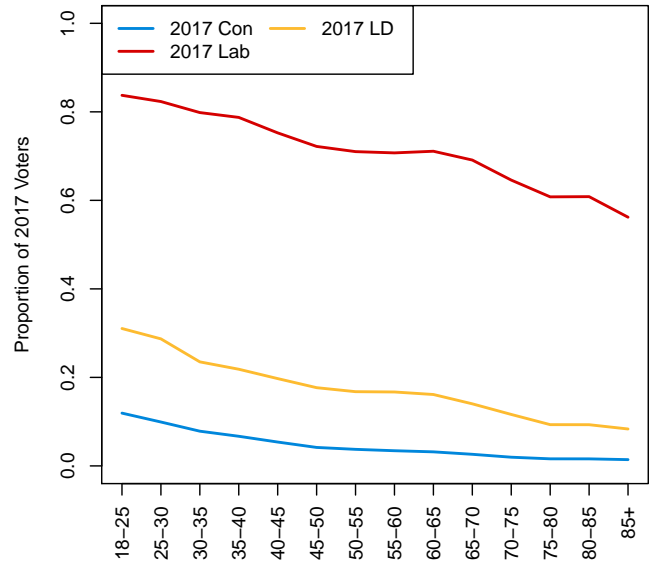


Vote by age and 2017 vote

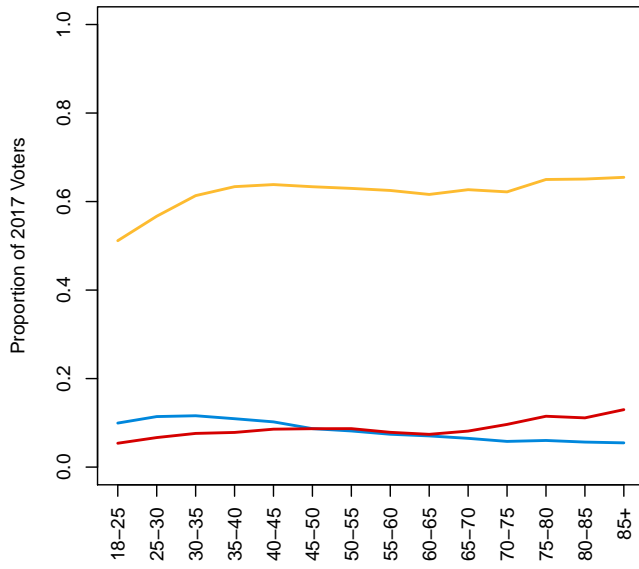
Conservative Vote by Age and 2017 vote



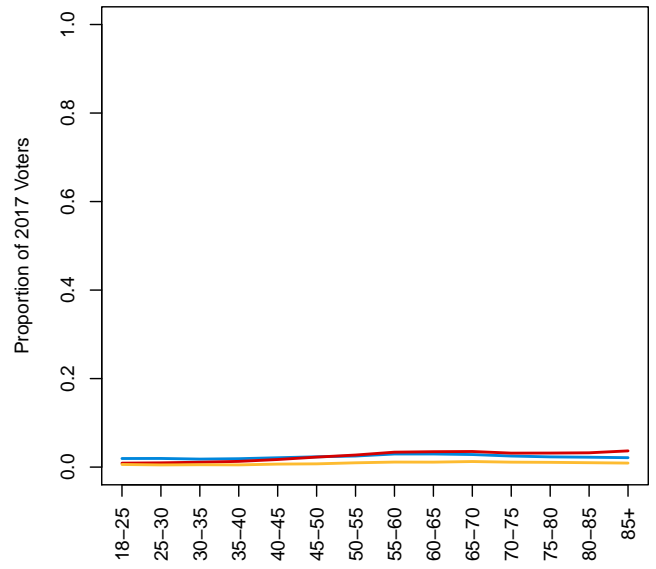
Labour Vote by Age and 2017 vote



LD Vote by Age and 2017 vote

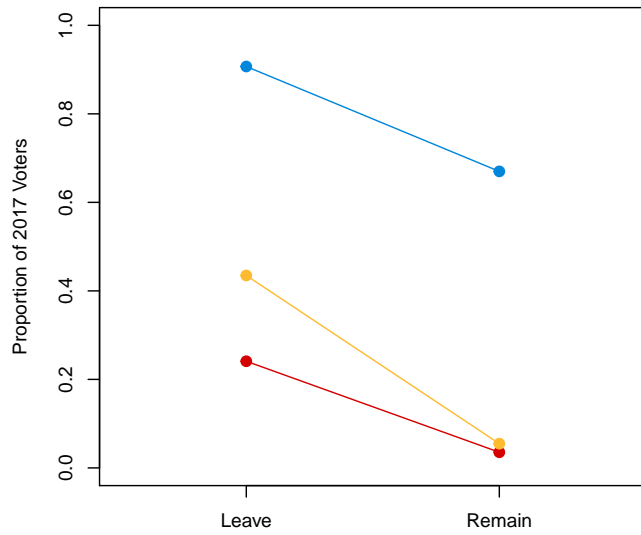


Brexit Party Vote by Age and 2017 vote

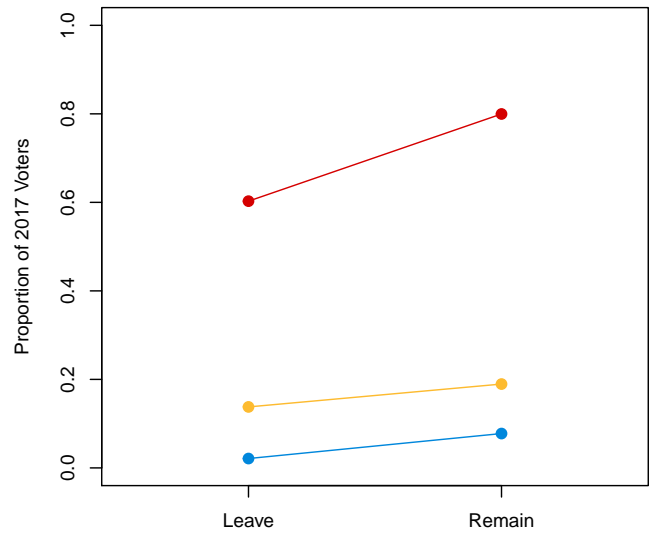


Vote by referendum vote and 2017 vote

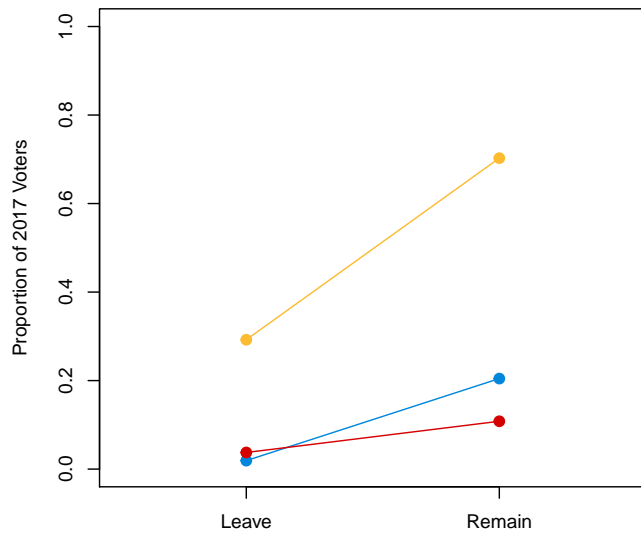
Conservative Vote by EU vote and 2017 vote



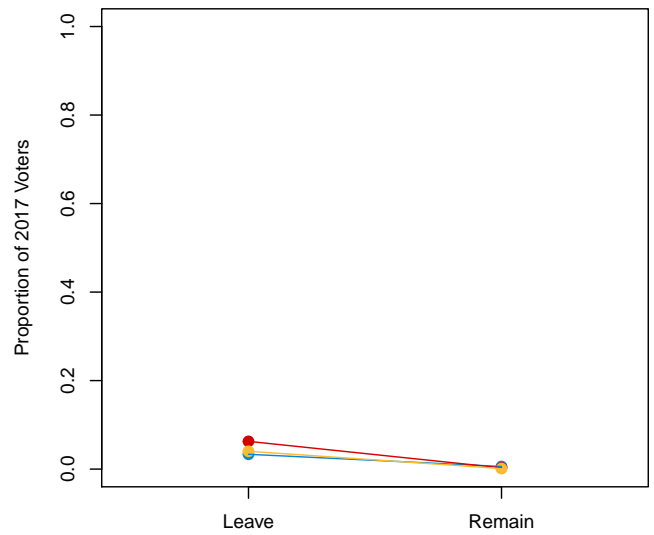
Labour Vote by EU vote and 2017 vote



LD Vote by EU vote and 2017 vote

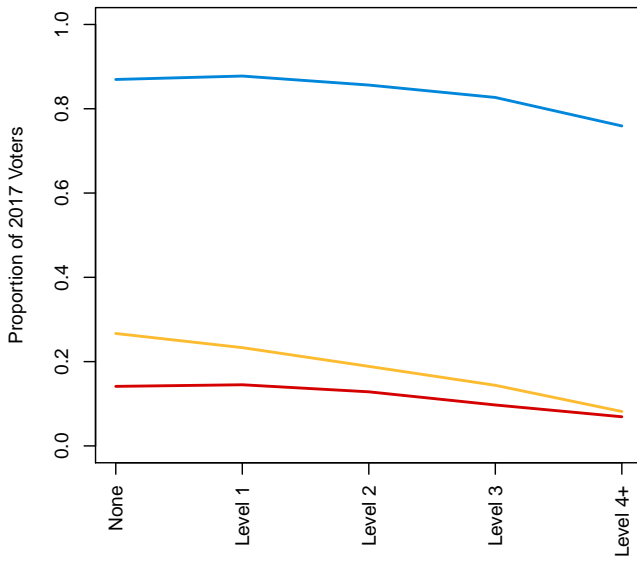


Brexit party Vote by EU vote and 2017 vote

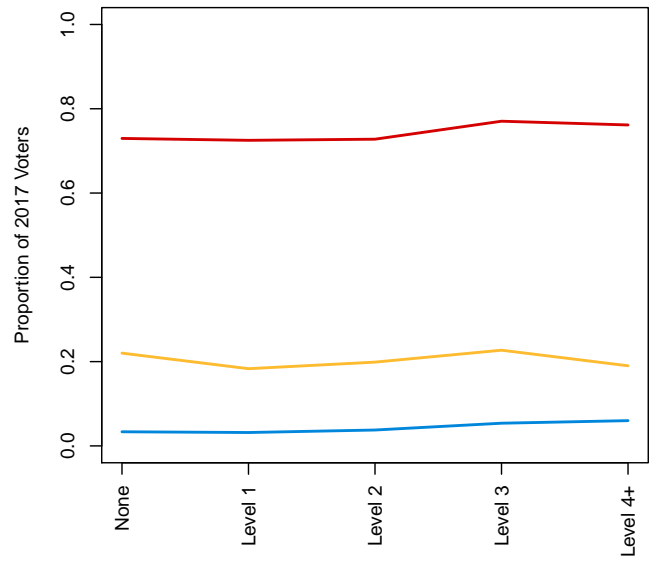


Vote by qualifications and 2017 vote

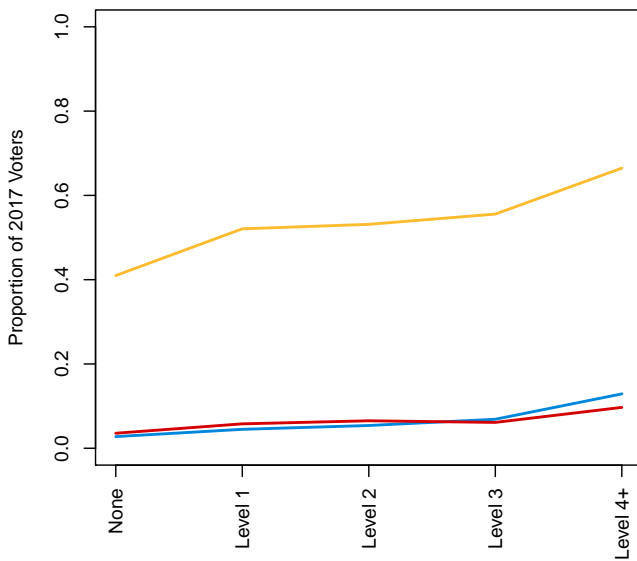
Conservative Vote by Qualifications and 2017 vote



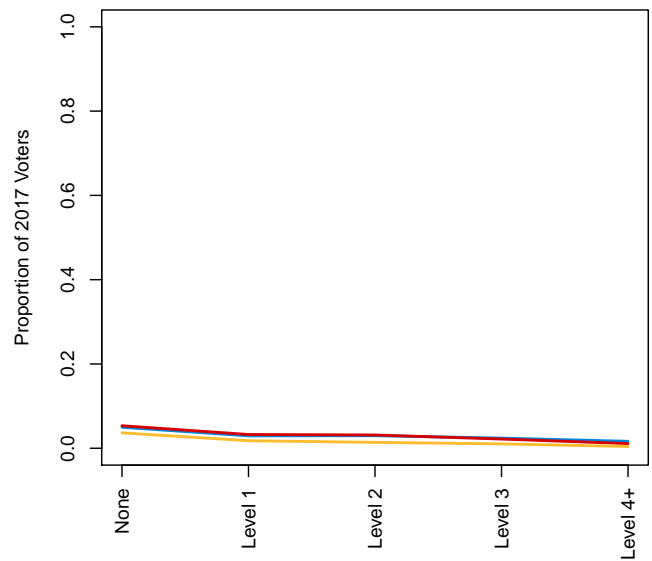
Labour Vote by Qualifications and 2017 vote



LD Vote by Qualifications and 2017 vote



Brexit Party Vote by Qualifications and 2017 vote

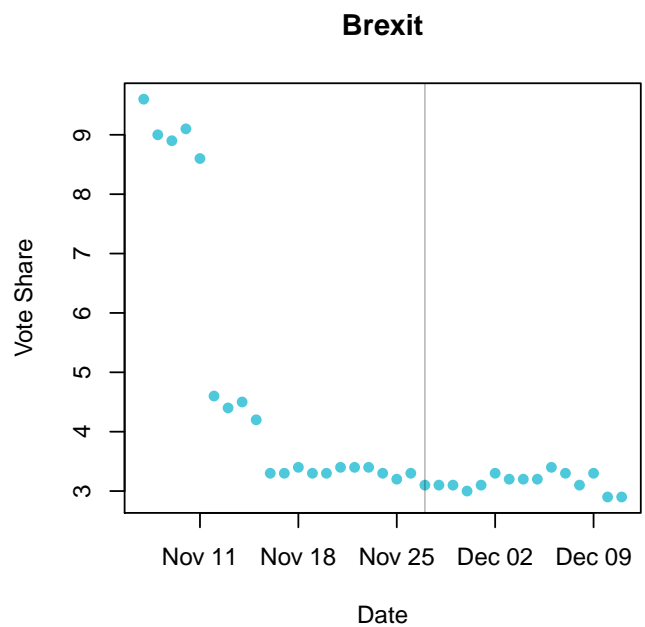
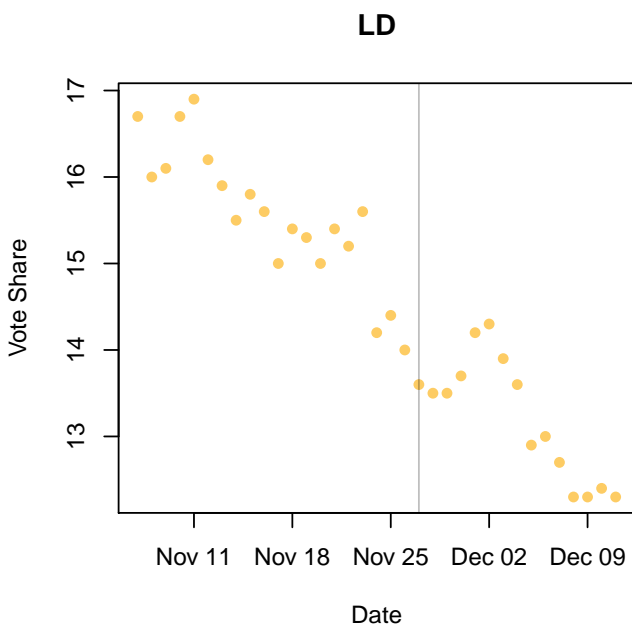
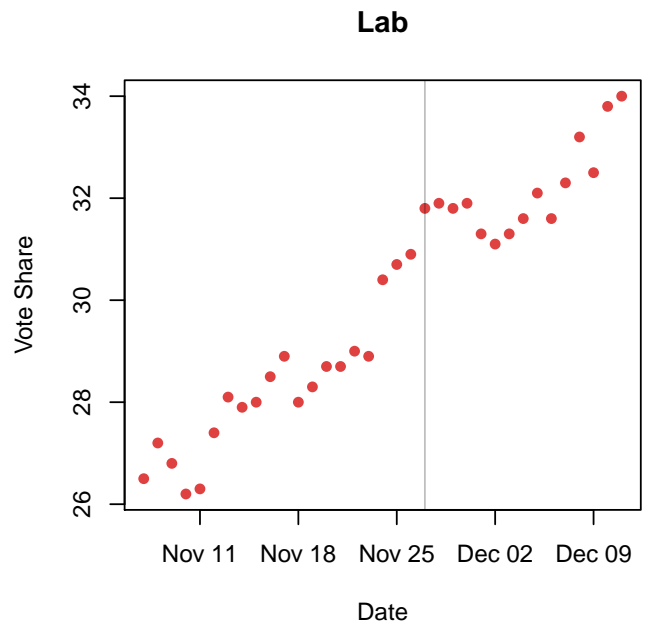
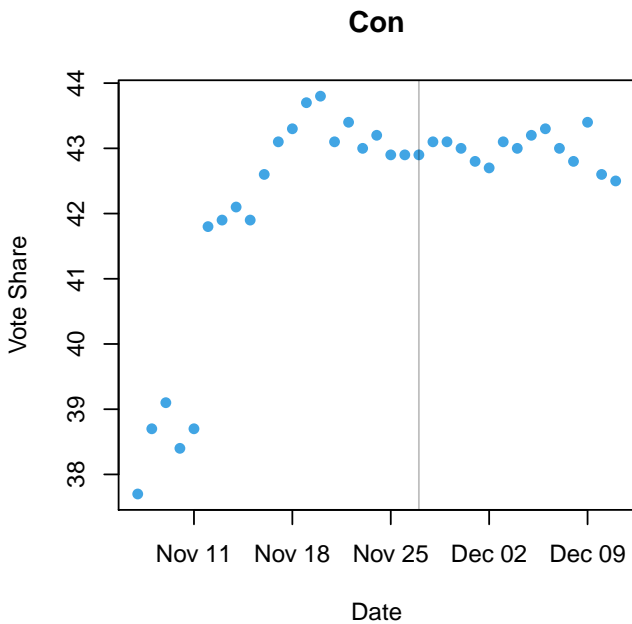


Note: the "Does not apply" and "Other" categories are excluded from this plot. "Does not apply" includes all voters over age 70, regardless of their actual level of qualifications. This is because the Annual Population Survey does not record qualifications for retired individuals past the age of 70. "Other" includes qualifications that are not included on the Register of Regulated Qualifications.

THE CAMPAIGN

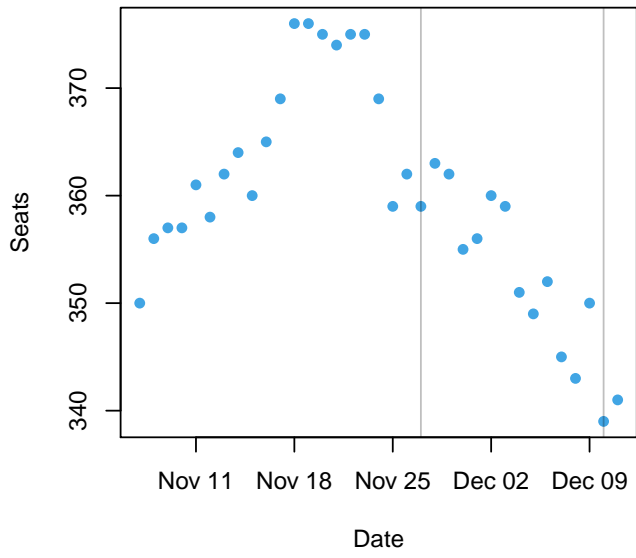
The plots on this page and the next page show the evolution of our estimates from the beginning of the campaign. The vertical lines show the dates on which our estimates were publicly released. Note that the model was almost entirely unchanged during this period, with a few minor exceptions. First, the candidates/parties believed to be standing in each constituency were not fixed during the early period of the campaign. Second, variables based on tactical voting advice websites changed during the campaign.

Estimated Vote Shares by Date

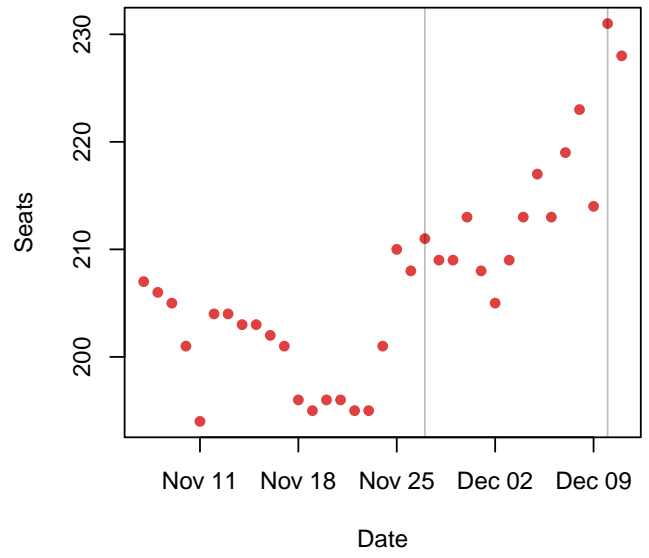


Estimated Seats by Date

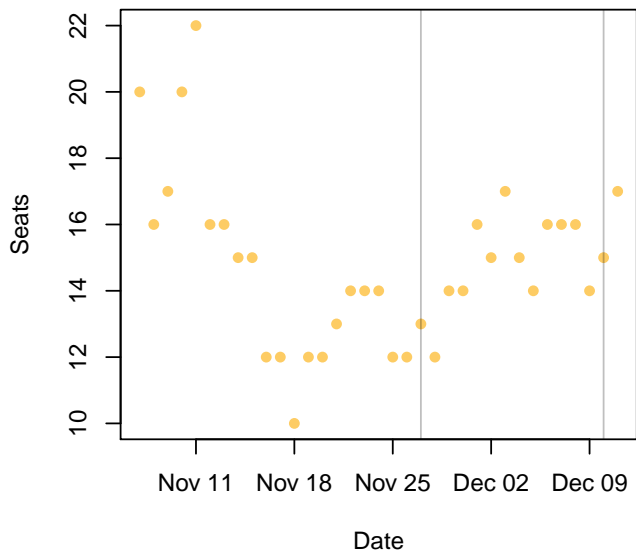
Con



Lab



LD



SNP

