

STATE OF THE NATION

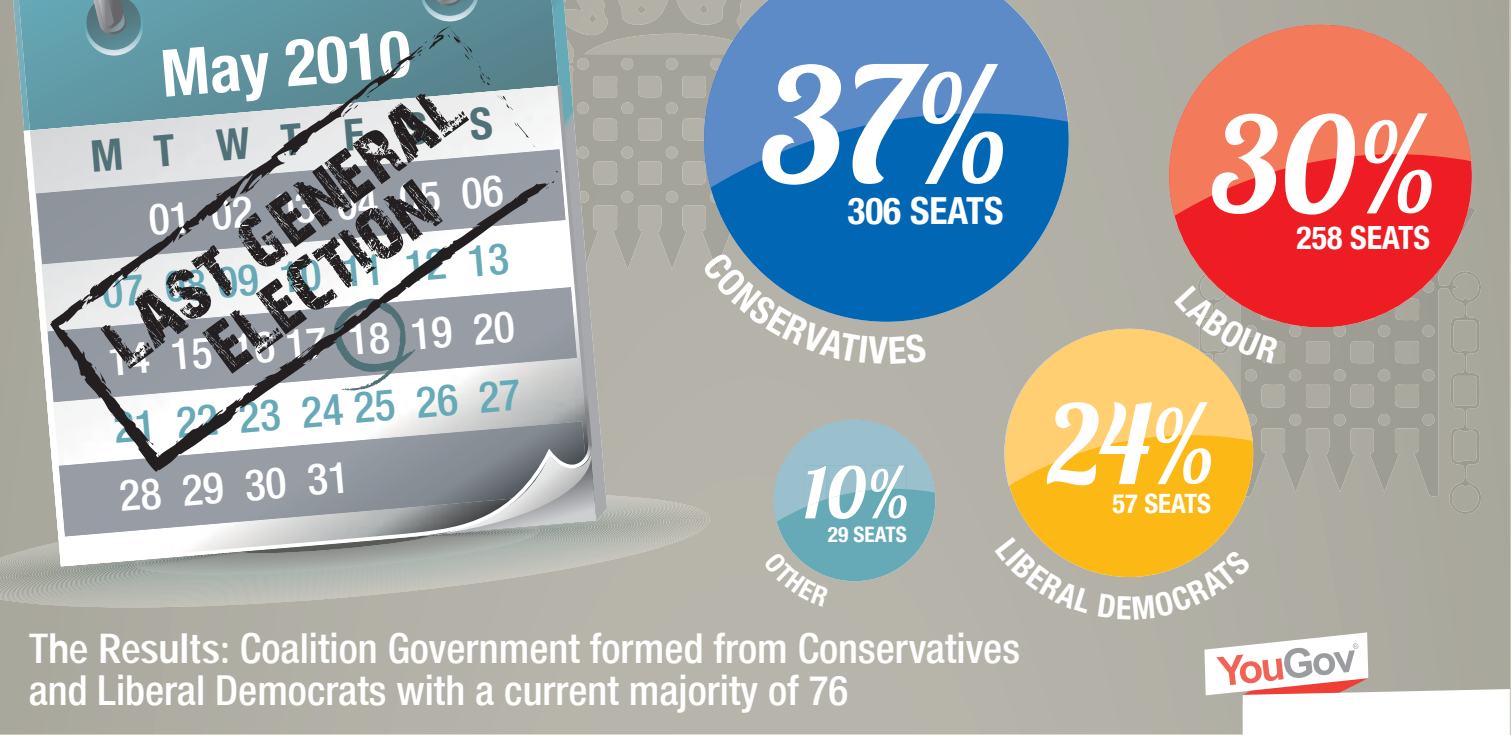
THE POLITICAL LANDSCAPE

September 2013

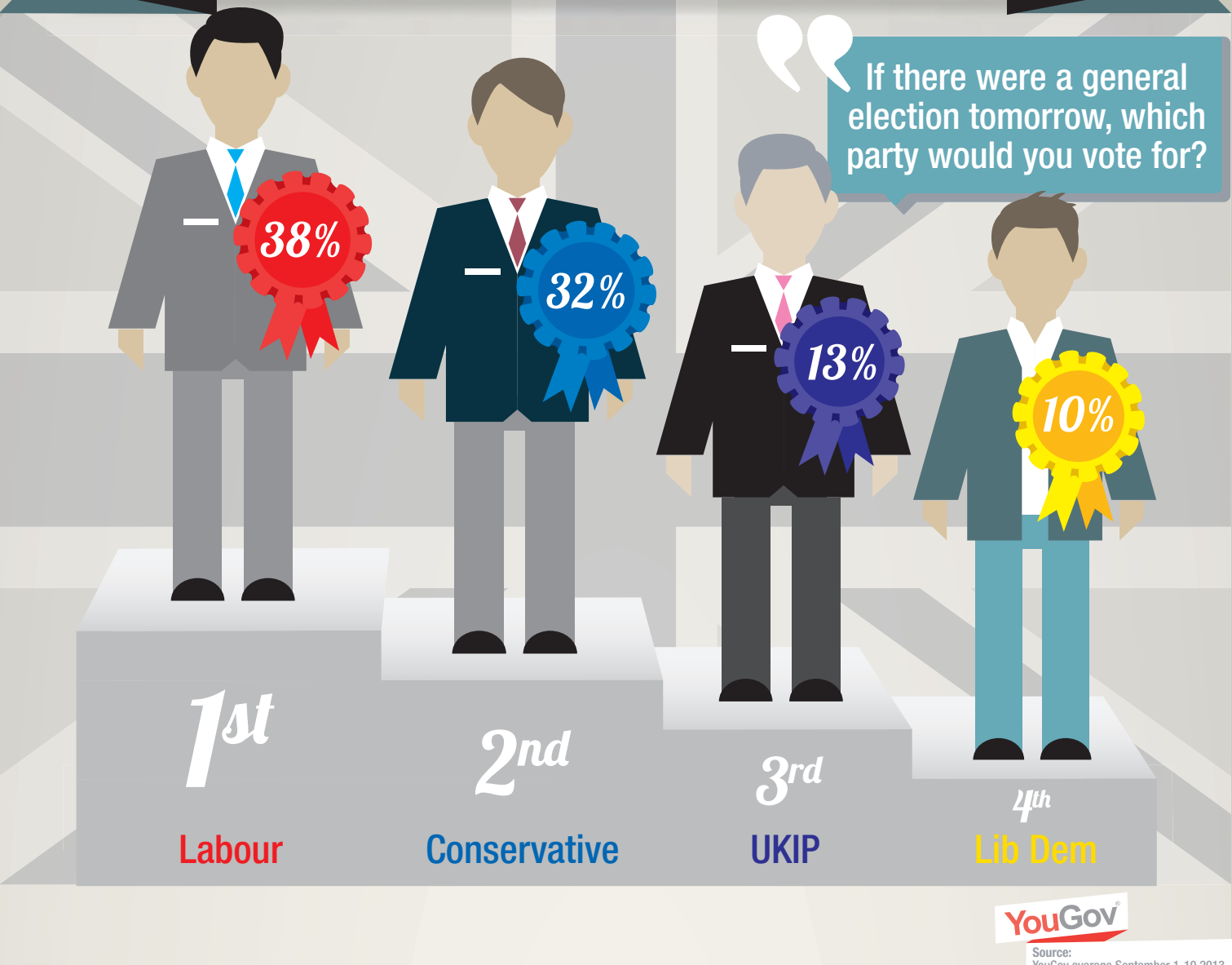
Did you know it is just **19 months** until the next General Election?

The following data reveals how the British electorate would cast their vote.

THE STORY SO FAR...

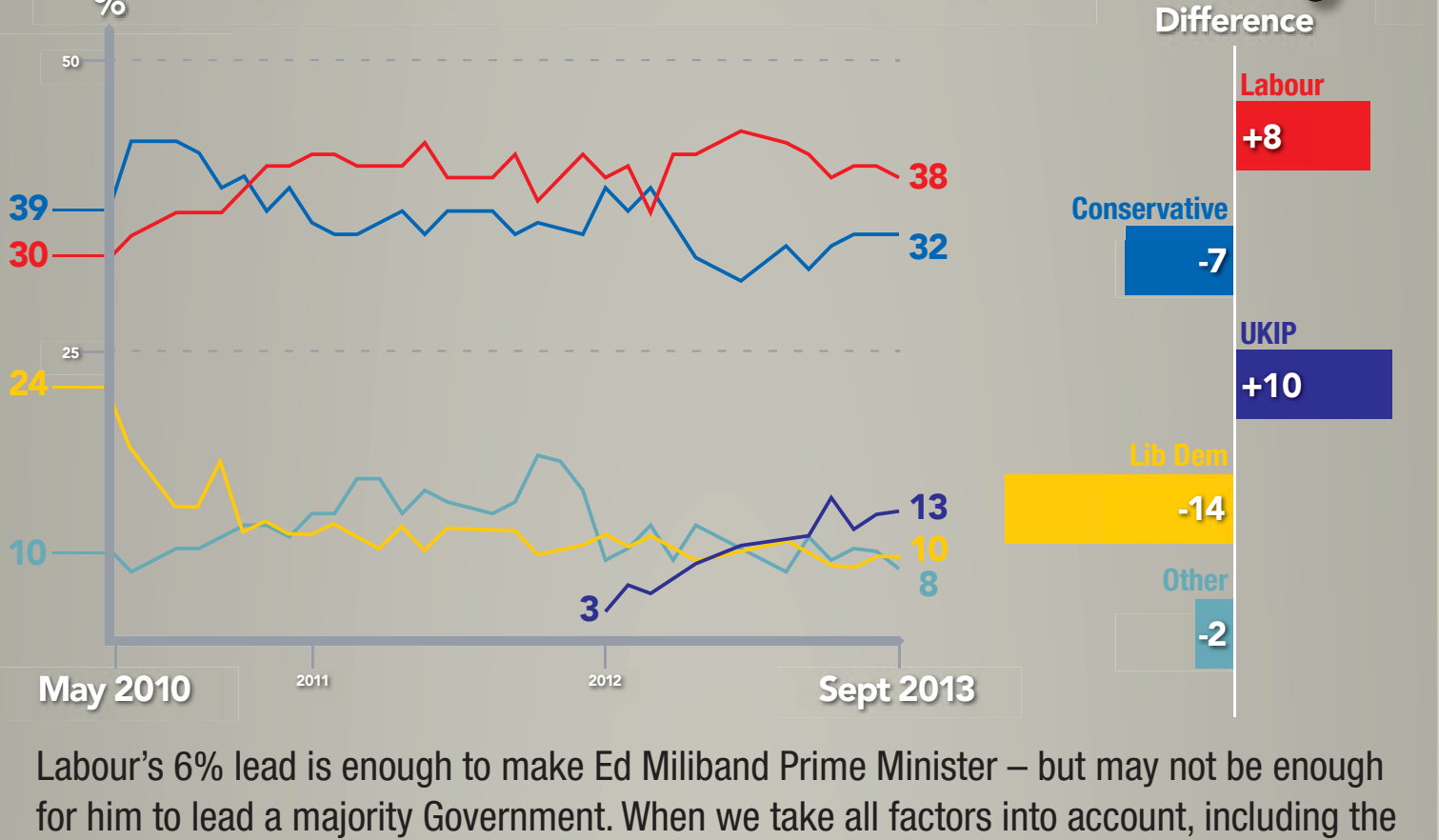


CURRENT VOTING TREND SEPTEMBER 2013



WHAT THE DATA REVEALS

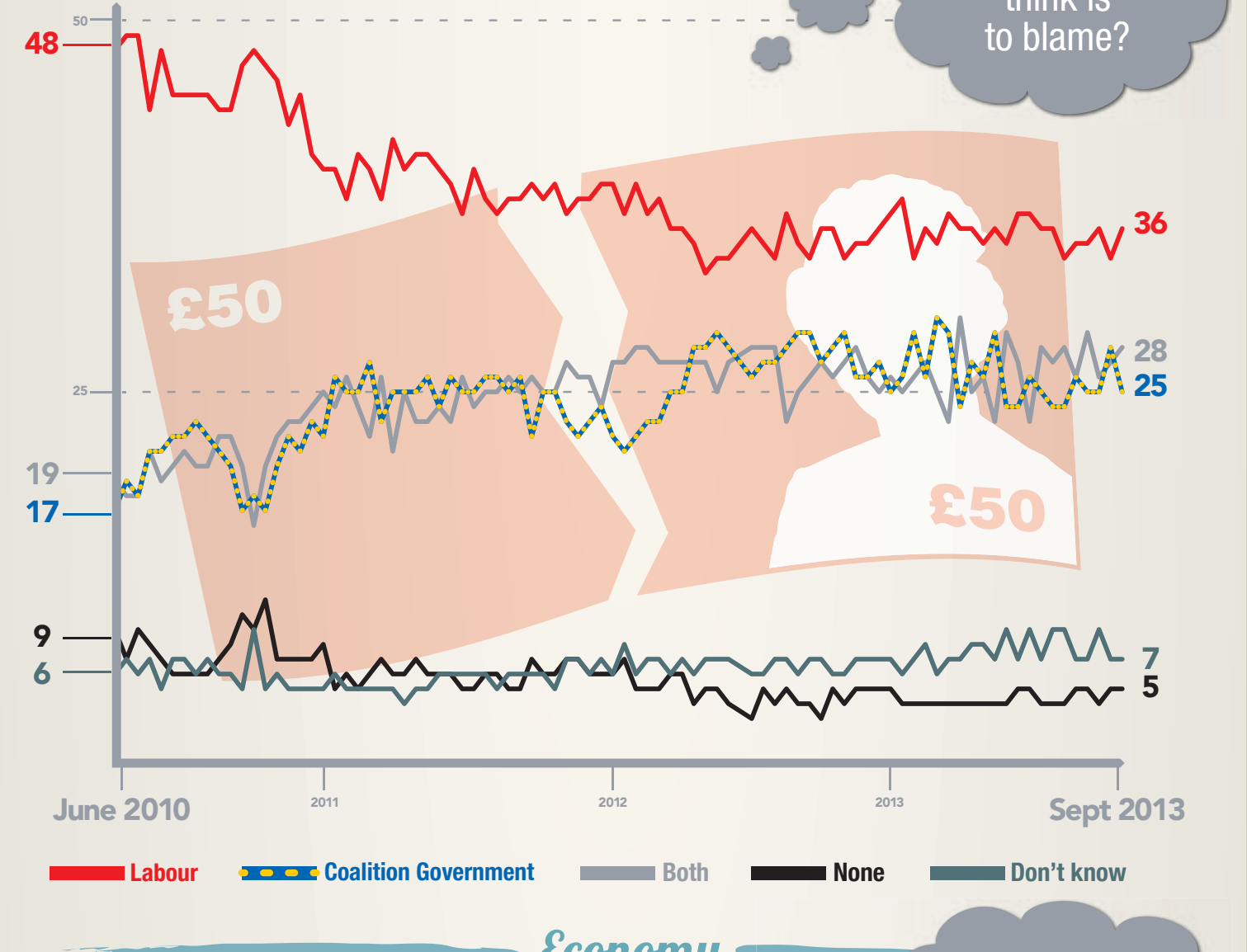
The campaign trail since the last election



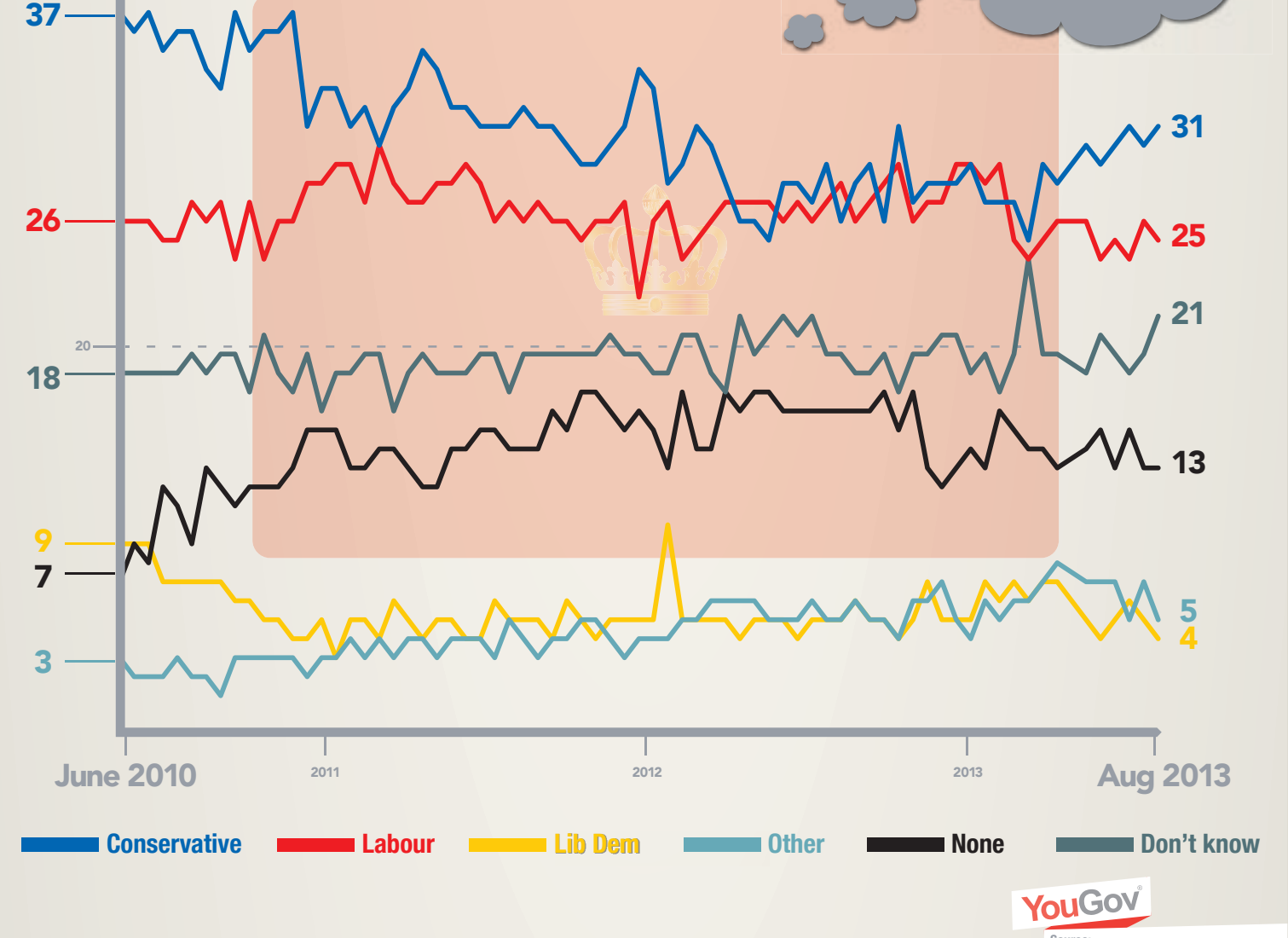
Labour's 6% lead is enough to make Ed Miliband Prime Minister – but may not be enough for him to lead a majority Government. When we take all factors into account, including the incumbency “bonus” likely to be enjoyed by Conservative MPs newly elected in 2010, Labour and the Conservatives both need around a 7% lead in order to secure an overall majority in 2015.

THE NATIONS KEY VOTING ISSUES

Spending Cuts

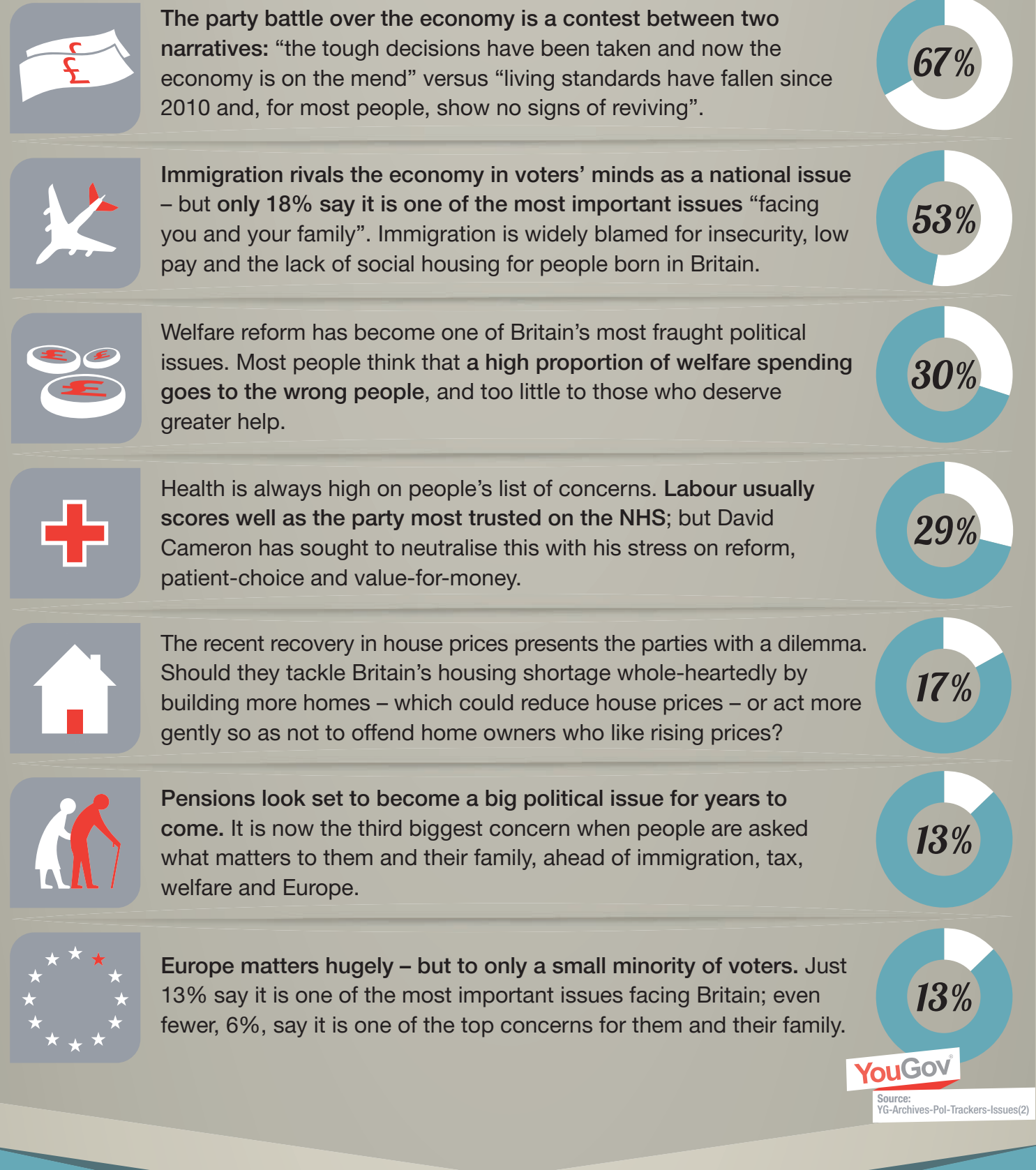


Economy



WHAT'S WINDING UP BRITAIN?

We asked which of the following do you think are the most important issues facing the country at this time?



Have your say in what the world thinks!

DO YOU AGREE?

State of the nation aims to be the most current indicator for British politics.

CAST YOUR VOTE

SOURCE
State of the Nation:
YG-Archives-Pol-Trackers:
- Voting-Trends-with-UKIP-090913
- Economy-090913
- Issues(2)-280613
YouGovResults.com
YouGovArchive.com
New data released daily

