

Interviewing: February 2-4, 2013  
Sample: 1000 Adults nationwide online  
623 registered voters nationwide online



806 D Street, SE  
Washington, DC 20003

Contact:  
Thomas Riehle  
Ph: (202) 544-2550

# *The Economist/YouGov* Poll

## Weekly Tracking

For immediate release

**1. Approval of Obama as President – Historical**

Do you approve or disapprove of the way Barack Obama is handling his job as President?

All Adults							
	<b>Total Approve</b>	<b>Total Disapprove</b>	Strongly Approve	Somewhat Approve	Somewhat Disapprove	Strongly Disapprove	Not Sure
February 2-4, 2013	45%	47%	19%	26%	11%	36%	8%
January 27-29, 2013	49%	46%	25%	24%	13%	33%	5%
January 20-22, 2013	46%	47%	16%	30%	12%	35%	7%
January 13-15, 2013	48%	48%	24%	24%	11%	37%	4%
January 6-8, 2013	53%	41%	22%	31%	11%	30%	6%
December 23-25, 2012	49%	43%	24%	25%	9%	34%	7%
December 15-17, 2012	49%	44%	20%	29%	14%	30%	7%
December 8-10, 2012	48%	43%	22%	26%	10%	33%	9%
December 1-3, 2012	49%	47%	24%	25%	12%	35%	4%
November 23-25, 2012	51%	46%	27%	24%	9%	37%	2%
One Year Ago	42%	48%	17%	25%	15%	33%	10%

Registered Voters							
	<b>Total Approve</b>	<b>Total Disapprove</b>	Strongly Approve	Somewhat Approve	Somewhat Disapprove	Strongly Disapprove	Not Sure
February 2-4, 2013	48%	50%	25%	23%	11%	39%	3%
January 27-29, 2013	49%	48%	25%	24%	10%	38%	3%
January 20-22, 2013	45%	52%	18%	27%	11%	41%	4%
January 13-15, 2013	45%	53%	24%	21%	9%	44%	2%
January 6-8, 2013	50%	48%	24%	26%	11%	37%	2%
December 23-25, 2012	49%	48%	25%	24%	9%	39%	3%
December 15-17, 2012	52%	46%	25%	27%	9%	37%	2%
December 8-10, 2012	51%	46%	28%	23%	8%	38%	3%
December 1-3, 2012	47%	50%	25%	22%	10%	40%	2%
November 23-25, 2012	51%	47%	27%	24%	10%	37%	1%
One Year Ago	47%	49%	22%	25%	13%	36%	4%

## Obama Approval

"Do you approve or disapprove of the way Barack Obama is handling his job as President?"

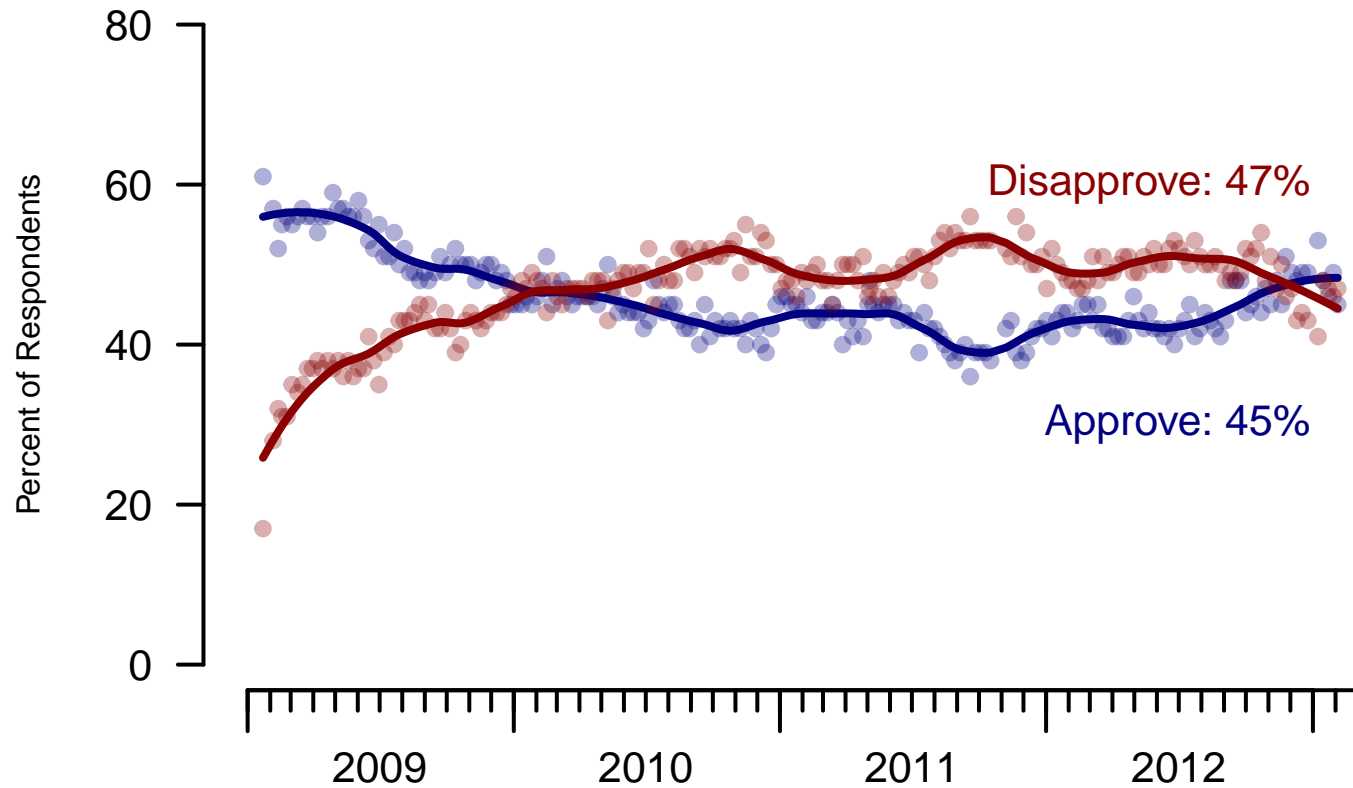


Figure 1: Obama Approval – All Adults

## Obama Approval

"Do you approve or disapprove of the way Barack Obama is handling his job as President?"

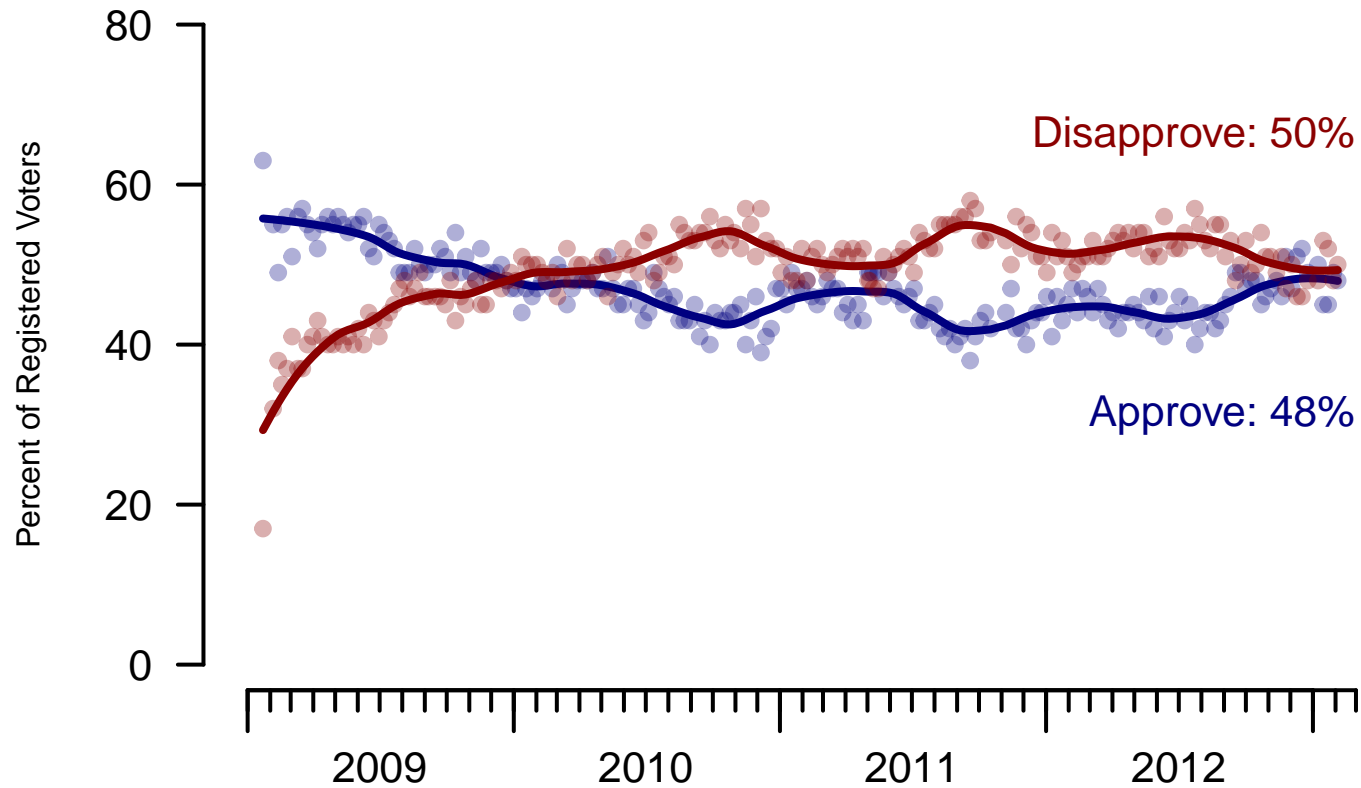


Figure 2: Obama Approval – Registered Voters

**2. Approval of Obama as President – This Week – All Adults**

Do you approve or disapprove of the way Barack Obama is handling his job as President?

	Age					Race			Gender		Education		
	Total	18-29	30-44	45-64	65+	White	Black	Hispanic	Male	Female	HS or less	Some college	College graduate
Strongly Approve	19%	18%	18%	21%	21%	13%	47%	23%	16%	22%	19%	17%	24%
Somewhat Approve	26%	31%	35%	19%	15%	24%	30%	33%	29%	23%	19%	33%	28%
Somewhat Disapprove	11%	14%	10%	12%	8%	12%	6%	15%	13%	10%	12%	11%	12%
Strongly Disapprove	36%	24%	28%	43%	54%	45%	9%	14%	37%	35%	40%	32%	33%
Not Sure	8%	13%	9%	5%	2%	6%	8%	14%	6%	10%	10%	7%	2%
Totals (Unweighted N)	100% (1,000)	100% (201)	100% (206)	100% (455)	100% (138)	100% (810)	100% (108)	100% (82)	100% (442)	100% (558)	100% (353)	100% (364)	100% (283)

	Party ID				Ideology			Region				Family Income		
	Total	Dem	Rep	Ind	Lib	Mod	Con	North-east	Mid-west	South	West	Under 40	40-100	100+
Strongly Approve	19%	50%	0%	11%	43%	24%	4%	28%	15%	18%	17%	20%	19%	24%
Somewhat Approve	26%	40%	4%	28%	43%	39%	8%	31%	24%	23%	27%	28%	28%	21%
Somewhat Disapprove	11%	3%	18%	15%	7%	14%	12%	6%	14%	10%	17%	12%	11%	8%
Strongly Disapprove	36%	5%	75%	39%	3%	20%	75%	23%	37%	43%	33%	31%	37%	46%
Not Sure	8%	2%	3%	7%	5%	4%	1%	12%	11%	5%	5%	9%	4%	—
Totals (Unweighted N)	100% (1,000)	100% (357)	100% (275)	100% (294)	100% (267)	100% (335)	100% (348)	100% (220)	100% (266)	100% (346)	100% (168)	100% (358)	100% (350)	100% (104)

**3. Approval of U.S. Congress – Historical**

Overall, do you approve or disapprove of the way that the United States Congress is handling its job?

All Adults

	<b>Total Approve</b>	<b>Total Disapprove</b>	Strongly Approve	Somewhat Approve	Neutral	Somewhat Disapprove	Strongly Disapprove	Not Sure
February 2-4, 2013	10%	66%	2%	8%	13%	25%	41%	11%
January 27-29, 2013	10%	64%	2%	8%	17%	26%	38%	10%
January 20-22, 2013	9%	65%	3%	6%	18%	22%	43%	8%
January 13-15, 2013	11%	69%	3%	8%	13%	24%	45%	7%
January 6-8, 2013	10%	67%	2%	8%	15%	20%	47%	7%
December 23-25, 2012	10%	64%	2%	8%	17%	23%	41%	8%
December 15-17, 2012	8%	67%	1%	7%	16%	26%	41%	10%
December 8-10, 2012	9%	58%	3%	6%	17%	20%	38%	15%
December 1-3, 2012	11%	61%	2%	9%	17%	28%	33%	10%
November 23-25, 2012	9%	64%	3%	6%	18%	29%	35%	9%
One Year Ago	7%	66%	1%	6%	14%	22%	44%	11%

Registered Voters

	<b>Total Approve</b>	<b>Total Disapprove</b>	Strongly Approve	Somewhat Approve	Neutral	Somewhat Disapprove	Strongly Disapprove	Not Sure
February 2-4, 2013	8%	76%	2%	6%	12%	27%	49%	5%
January 27-29, 2013	8%	73%	2%	6%	12%	27%	46%	8%
January 20-22, 2013	9%	72%	2%	7%	14%	22%	50%	5%
January 13-15, 2013	8%	75%	2%	6%	14%	24%	51%	4%
January 6-8, 2013	7%	76%	2%	5%	13%	20%	56%	4%
December 23-25, 2012	9%	73%	2%	7%	15%	27%	46%	4%
December 15-17, 2012	8%	73%	1%	7%	15%	27%	46%	3%
December 8-10, 2012	8%	70%	2%	6%	15%	24%	46%	7%
December 1-3, 2012	10%	69%	2%	8%	15%	30%	39%	7%
November 23-25, 2012	11%	65%	3%	8%	16%	29%	36%	9%
One Year Ago	9%	75%	2%	7%	12%	25%	50%	4%

### Congress Approval

"Do you approve of the way the  
U.S. Congress is handling its job?"

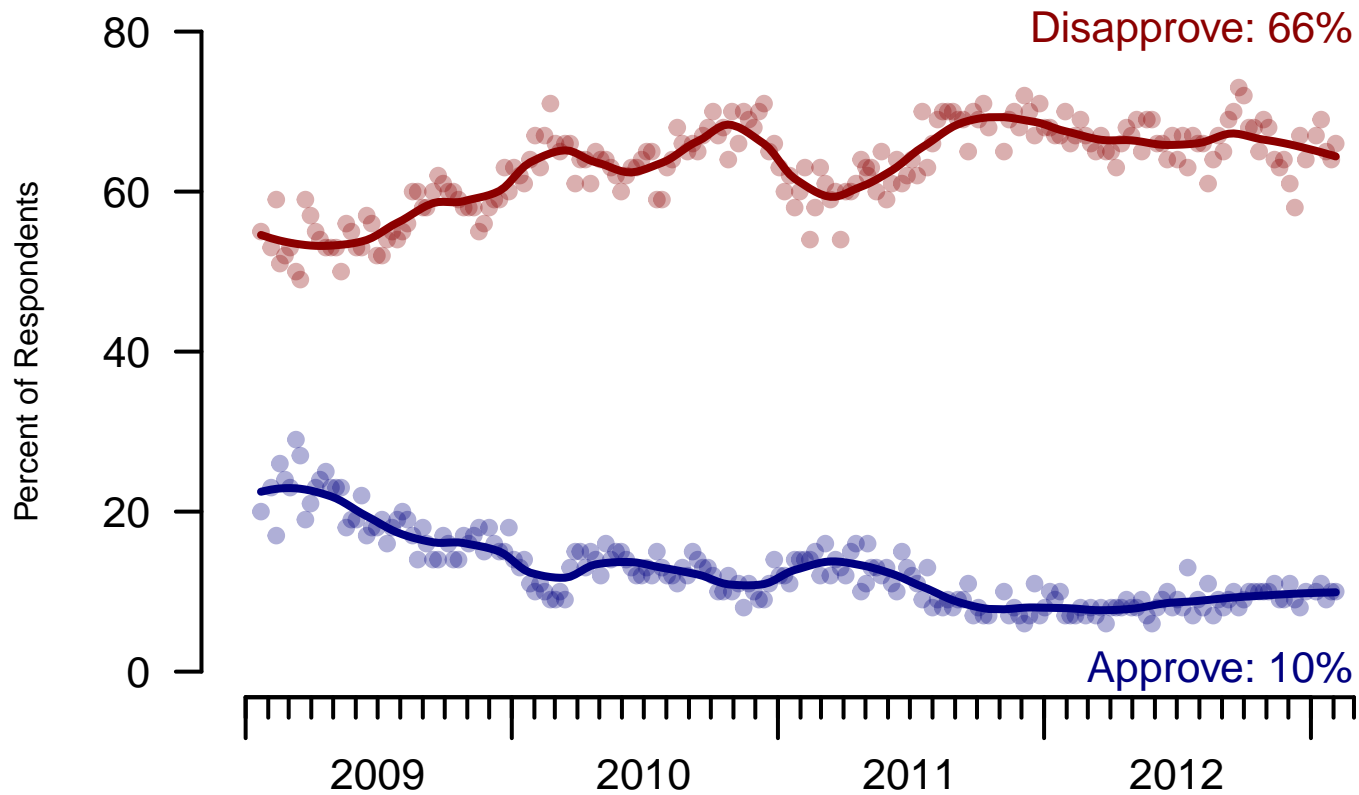


Figure 3: Congress Approval – All Adults

## Congress Approval

"Do you approve of the way the  
U.S. Congress is handling its job?"

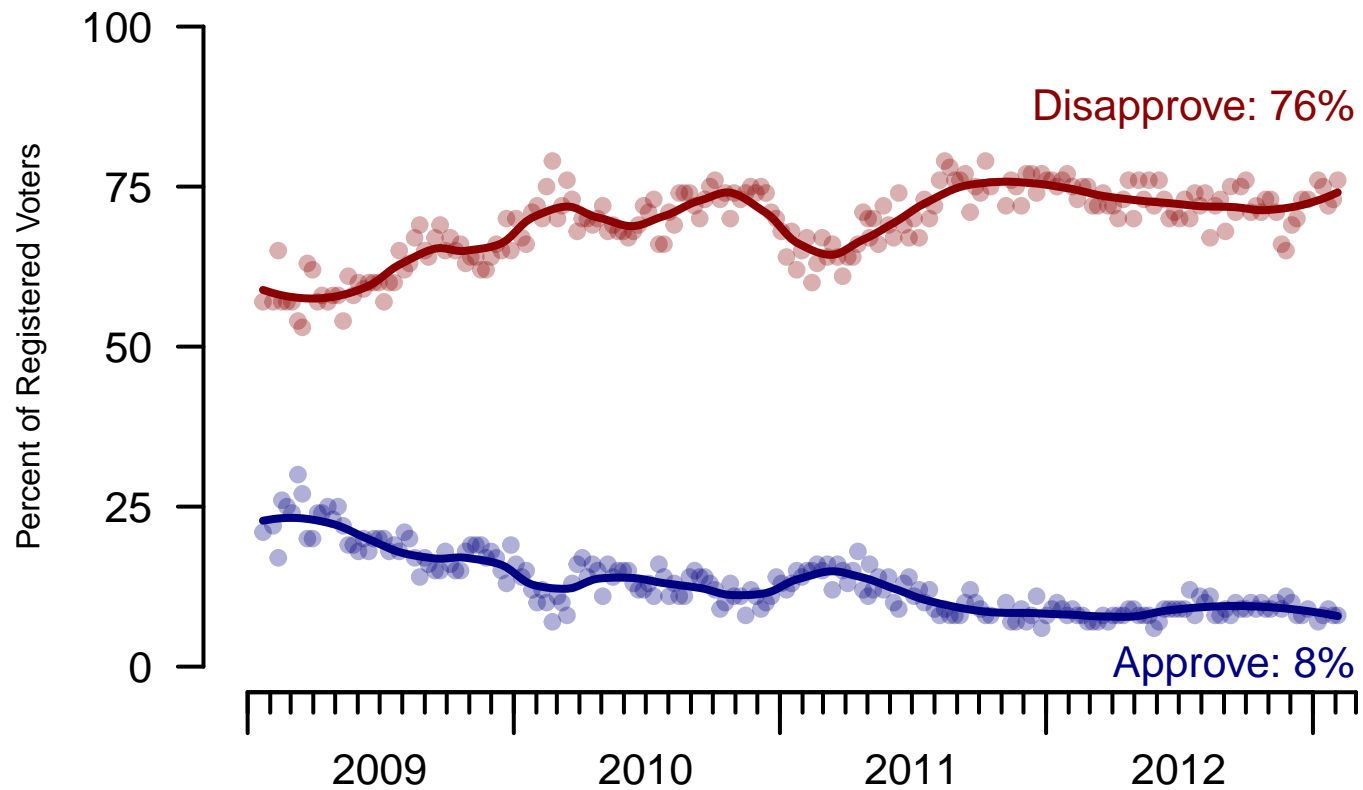


Figure 4: Congress Approval – Registered Voters

**4. Approval of U.S. Congress – This Week – All Adults**

Overall, do you approve or disapprove of the way that the United States Congress is handling its job?

	Age					Race			Gender		Education		
	Total	18-29	30-44	45-64	65+	White	Black	Hispanic	Male	Female	HS or less	Some college	College graduate
Strongly approve	2%	3%	4%	1%	1%	2%	5%	5%	2%	3%	3%	3%	2%
Somewhat approve	8%	9%	9%	6%	5%	5%	17%	13%	7%	8%	6%	10%	7%
Neither approve nor disapprove	13%	11%	17%	13%	9%	12%	13%	17%	11%	15%	15%	13%	10%
Somewhat disapprove	25%	27%	26%	24%	23%	27%	19%	19%	26%	23%	24%	24%	28%
Strongly disapprove	41%	30%	33%	48%	59%	45%	29%	29%	46%	36%	37%	42%	46%
Not sure	11%	21%	11%	7%	3%	9%	16%	18%	8%	14%	15%	9%	7%
Totals (Unweighted N)	100% (997)	100% (199)	100% (206)	100% (454)	100% (138)	100% (808)	100% (107)	100% (82)	100% (442)	100% (555)	100% (352)	100% (362)	100% (283)

	Party ID			Ideology			Region				Family Income			
	Total	Dem	Rep	Ind	Lib	Mod	Con	North-east	Mid-west	South	West	Under 40	40-100	100+
Strongly approve	2%	4%	2%	2%	2%	3%	2%	2%	1%	3%	3%	2%	3%	3%
Somewhat approve	8%	10%	7%	8%	7%	8%	9%	5%	10%	8%	7%	10%	6%	3%
Neither approve nor disapprove	13%	19%	14%	7%	11%	16%	11%	17%	13%	14%	7%	14%	11%	7%
Somewhat disapprove	25%	22%	29%	27%	21%	25%	32%	21%	25%	29%	20%	28%	24%	26%
Strongly disapprove	41%	38%	42%	49%	51%	38%	42%	36%	43%	36%	52%	34%	46%	59%
Not sure	11%	7%	7%	6%	8%	9%	4%	19%	8%	10%	10%	11%	9%	2%
Totals (Unweighted N)	100% (997)	100% (355)	100% (274)	100% (294)	100% (264)	100% (335)	100% (348)	100% (219)	100% (265)	100% (345)	100% (168)	100% (357)	100% (348)	100% (104)

**5. Direction of country – Historical**

Would you say things in this country today are...

	All Adults		
	Right Track	Wrong Direction	Not Sure
February 2-4, 2013	28%	56%	16%
January 27-29, 2013	34%	50%	16%
January 20-22, 2013	28%	58%	14%
January 13-15, 2013	33%	54%	13%
January 6-8, 2013	35%	50%	15%
December 23-25, 2012	32%	52%	16%
December 15-17, 2012	31%	53%	16%
December 8-10, 2012	34%	49%	18%
December 1-3, 2012	33%	51%	16%
November 23-25, 2012	38%	53%	9%
One Year Ago	26%	54%	19%

	Registered Voters		
	Right Track	Wrong Direction	Not Sure
February 2-4, 2013	33%	54%	13%
January 27-29, 2013	34%	54%	12%
January 20-22, 2013	30%	58%	12%
January 13-15, 2013	35%	55%	11%
January 6-8, 2013	38%	52%	10%
December 23-25, 2012	34%	53%	13%
December 15-17, 2012	34%	52%	13%
December 8-10, 2012	35%	53%	12%
December 1-3, 2012	35%	53%	12%
November 23-25, 2012	37%	52%	11%
One Year Ago	32%	56%	12%

## Direction of Country

"Would you say things in this country today are generally headed in the right direction or off on the wrong track?"

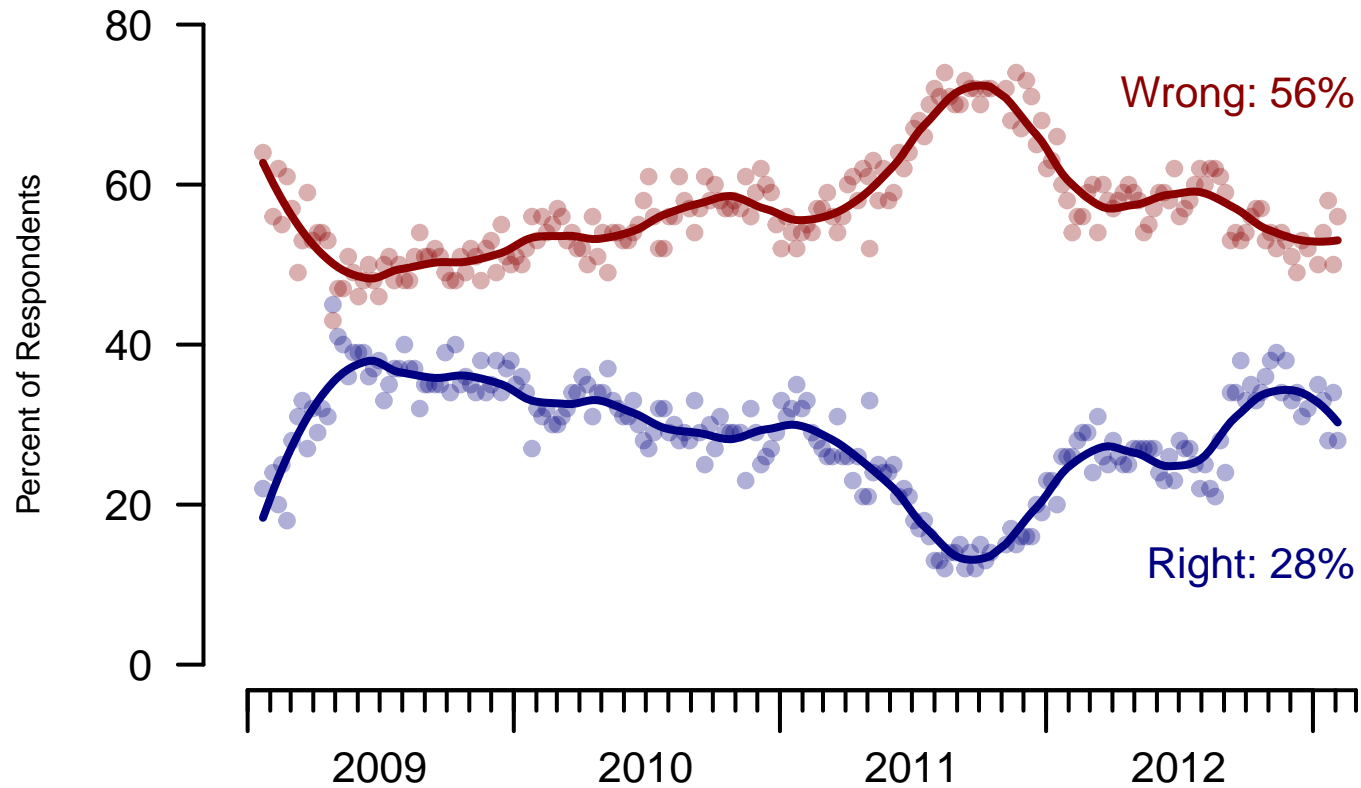


Figure 5: Direction of Country – All Adults

## Direction of Country

"Would you say things in this country today are generally headed in the right direction or off on the wrong track?"

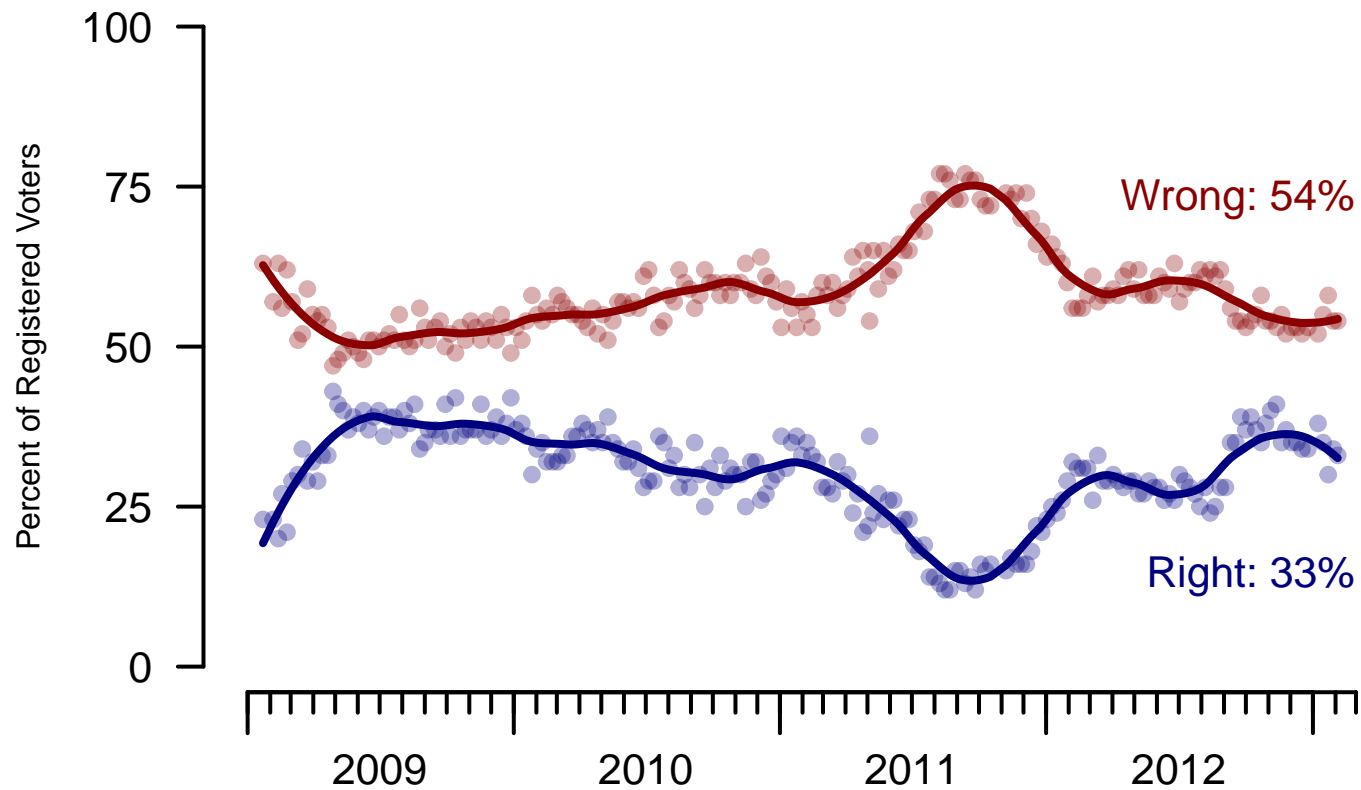


Figure 6: Direction of Country – Registered Voters

**6. Direction of Country – This Week – All Adults**

Would you say things in this country today are...

	Total	Age				Race			Gender		Education		
		18-29	30-44	45-64	65+	White	Black	Hispanic	Male	Female	HS or less	Some college	College graduate
Generally headed in the right direction	28%	26%	31%	27%	28%	23%	48%	34%	29%	27%	21%	30%	40%
Off on the wrong track	56%	50%	54%	60%	61%	62%	32%	46%	60%	52%	62%	51%	51%
Not sure	16%	24%	15%	13%	12%	15%	20%	20%	11%	21%	17%	19%	9%
Totals (Unweighted N)	100% (998)	100% (201)	100% (206)	100% (453)	100% (138)	100% (809)	100% (107)	100% (82)	100% (440)	100% (558)	100% (353)	100% (363)	100% (282)

	Total	Party ID			Ideology			Region				Family Income		
		Dem	Rep	Ind	Lib	Mod	Con	North-east	Mid-west	South	West	Under 40	40-100	100+
Generally headed in the right direction	28%	61%	8%	23%	52%	43%	6%	33%	27%	26%	27%	25%	31%	41%
Off on the wrong track	56%	22%	87%	63%	24%	43%	90%	45%	60%	57%	59%	59%	52%	54%
Not sure	16%	17%	5%	14%	24%	15%	4%	22%	13%	17%	14%	16%	17%	5%
Totals (Unweighted N)	100% (998)	100% (356)	100% (274)	100% (294)	100% (266)	100% (335)	100% (347)	100% (220)	100% (266)	100% (345)	100% (167)	100% (357)	100% (349)	100% (104)

<b>Sponsorship</b>	<i>The Economist</i>
<b>Fieldwork</b>	YouGov
<b>Interviewing Dates</b>	February 2-4, 2013
<b>Target population</b>	U.S. citizens, aged 18 and over.
<b>Sampling method</b>	Respondents were selected from YouGov's panel using sample matching. A random sample (stratified by age, gender, race, education, and region) was selected from the 2005–2007 American Community Survey. Voter registration, turnout, religion, news interest, minor party identification, and non-placement on an ideology scale, were imputed from the 2008 Current Population Survey Registration and Voting Supplement and the Pew Religion in American Life Survey. Matching respondents were selected from the YouGov panel, an opt-in Internet panel.
<b>Weighting</b>	The sample was weighted using propensity scores based on age, gender, race, education, news interest, voter registration, and non-placement on an ideology scale. The weights range from 0.34 to 6.25, with a mean of one and a standard deviation of 1.1.
<b>Number of respondents</b>	1,000
<b>Margin of error</b>	± 4.6% (adjusted for weighting)
<b>Margin of error (Registered Voters)</b>	± 4.9% (adjusted for weighting)
<b>Survey mode</b>	Web-based interviews
<b>Full results</b>	Available online at <a href="http://today.yougov.com/news/categories/economist/">http://today.yougov.com/news/categories/economist/</a> .