

Interviewing: December 15-17, 2012
Sample: 1000 Adults nationwide online
696 registered voters nationwide online



806 D Street, SE
Washington, DC 20003

Contact:
Thomas Riehle
Ph: (202) 544-2550

The Economist/YouGov Poll

Weekly Tracking

For immediate release

1. Approval of Obama as President – Historical

Do you approve or disapprove of the way Barack Obama is handling his job as President?

All Adults							
	Total Approve	Total Disapprove	Strongly Approve	Somewhat Approve	Somewhat Disapprove	Strongly Disapprove	Not Sure
December 15-17, 2012	49%	44%	21%	28%	14%	30%	7%
December 8-10, 2012	48%	43%	22%	26%	10%	33%	9%
December 1-3, 2012	49%	47%	24%	25%	12%	35%	4%
November 24-26, 2012	51%	46%	27%	24%	9%	37%	2%
November 17-19, 2012	45%	50%	25%	20%	12%	38%	4%
November 10-12, 2012	48%	47%	24%	24%	8%	39%	5%
November 2-4, 2012	45%	51%	25%	20%	11%	40%	4%
October 26-28, 2012	47%	48%	23%	24%	7%	41%	5%
October 20-22, 2012	44%	54%	21%	23%	14%	40%	1%
October 13-15, 2012	46%	52%	20%	26%	11%	41%	3%
One Year Ago	42%	50%	15%	27%	13%	37%	8%

Registered Voters							
	Total Approve	Total Disapprove	Strongly Approve	Somewhat Approve	Somewhat Disapprove	Strongly Disapprove	Not Sure
December 15-17, 2012	51%	46%	25%	26%	10%	36%	2%
December 8-10, 2012	51%	46%	28%	23%	8%	38%	3%
December 1-3, 2012	47%	50%	25%	22%	10%	40%	2%
November 24-26, 2012	51%	47%	27%	24%	10%	37%	1%
November 17-19, 2012	46%	51%	27%	19%	9%	42%	3%
November 10-12, 2012	48%	49%	27%	21%	6%	43%	2%
November 2-4, 2012	47%	51%	28%	19%	9%	42%	2%
October 26-28, 2012	46%	51%	25%	21%	5%	46%	2%
October 20-22, 2012	45%	54%	22%	23%	13%	41%	1%
October 13-15, 2012	48%	50%	23%	25%	10%	40%	2%
One Year Ago	44%	51%	17%	27%	12%	39%	4%

Obama Approval

"Do you approve or disapprove of the way Barack Obama is handling his job as President?"

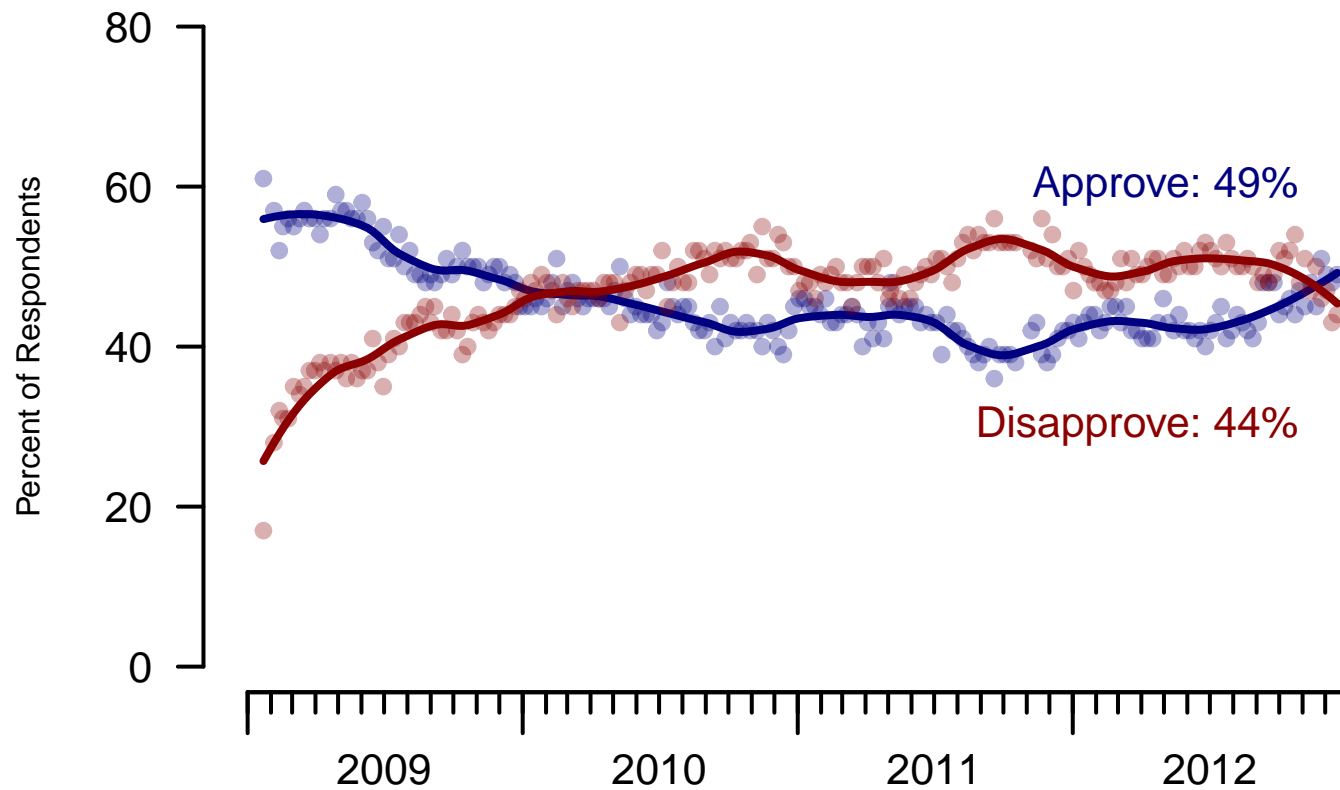


Figure 1: Obama Approval – All Adults

Obama Approval

"Do you approve or disapprove of the way Barack Obama is handling his job as President?"

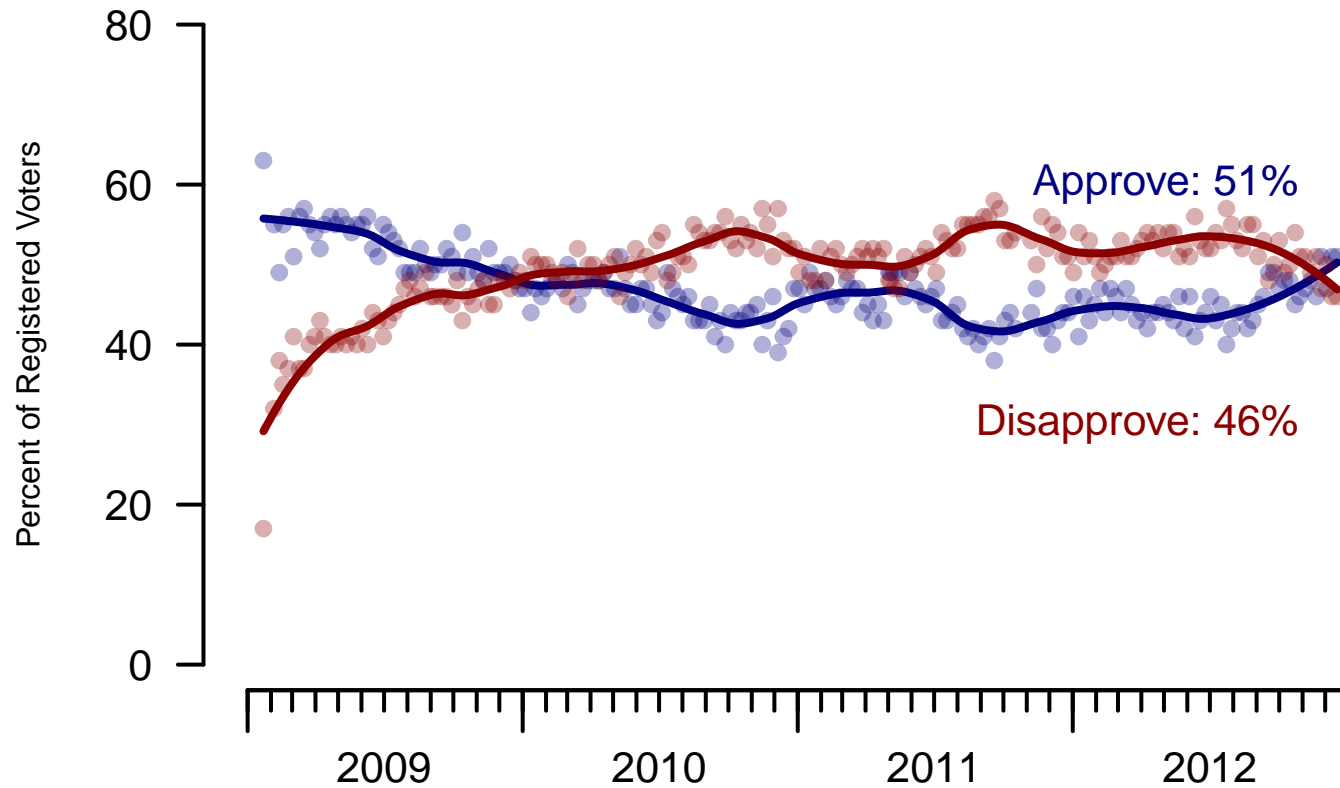


Figure 2: Obama Approval – Registered Voters

2. Approval of Obama as President – This Week – All Adults

Do you approve or disapprove of the way Barack Obama is handling his job as President?

	Age					Race			Gender		Education		
	Total	18-29	30-44	45-64	65+	White	Black	Hispanic	Male	Female	HS or less	Some college	College graduate
Strongly Approve	21%	11%	19%	25%	31%	16%	52%	18%	21%	21%	24%	21%	18%
Somewhat Approve	28%	50%	24%	24%	17%	30%	20%	27%	28%	28%	23%	25%	42%
Somewhat Disapprove	14%	11%	20%	14%	5%	14%	16%	12%	13%	15%	13%	15%	13%
Strongly Disapprove	30%	20%	29%	31%	44%	36%	1%	24%	32%	28%	33%	29%	26%
Not Sure	7%	9%	9%	6%	2%	4%	11%	19%	5%	8%	7%	10%	1%
Totals (Unweighted N)	100% (997)	100% (117)	100% (134)	100% (623)	100% (123)	100% (771)	100% (127)	100% (99)	100% (477)	100% (520)	100% (367)	100% (339)	100% (291)

	Party ID			Ideology			Region				Family Income			
	Total	Dem	Rep	Ind	Lib	Mod	Con	North-east	Mid-west	South	West	Under 40	40-100	100+
Strongly Approve	21%	46%	3%	13%	41%	26%	4%	23%	24%	19%	21%	22%	23%	16%
Somewhat Approve	28%	41%	6%	35%	44%	35%	12%	28%	27%	28%	29%	32%	26%	34%
Somewhat Disapprove	14%	8%	19%	15%	8%	15%	18%	10%	9%	17%	17%	17%	13%	12%
Strongly Disapprove	30%	3%	68%	32%	4%	18%	64%	28%	40%	28%	25%	21%	35%	35%
Not Sure	7%	2%	3%	5%	3%	6%	1%	11%	0%	8%	7%	8%	2%	3%
Totals (Unweighted N)	100% (997)	100% (389)	100% (263)	100% (298)	100% (266)	100% (339)	100% (353)	100% (146)	100% (214)	100% (379)	100% (258)	100% (344)	100% (385)	100% (92)

3. Approval of U.S. Congress – Historical

Overall, do you approve or disapprove of the way that the United States Congress is handling its job?

All Adults

	Total Approve	Total Disapprove	Strongly Approve	Somewhat Approve	Neutral	Somewhat Disapprove	Strongly Disapprove	Not Sure
December 15-17, 2012	7%	68%	1%	6%	16%	26%	42%	9%
December 8-10, 2012	9%	58%	3%	6%	17%	20%	38%	15%
December 1-3, 2012	11%	61%	2%	9%	17%	28%	33%	10%
November 24-26, 2012	9%	64%	3%	6%	18%	29%	35%	9%
November 17-19, 2012	9%	63%	2%	7%	18%	29%	34%	9%
November 10-12, 2012	11%	64%	3%	8%	19%	24%	40%	7%
November 2-4, 2012	10%	68%	2%	8%	14%	29%	39%	9%
October 26-28, 2012	10%	69%	2%	8%	16%	29%	40%	7%
October 20-22, 2012	10%	65%	2%	8%	19%	24%	41%	6%
October 13-15, 2012	10%	68%	1%	9%	16%	26%	42%	6%
One Year Ago	11%	67%	3%	8%	13%	21%	46%	10%

Registered Voters

	Total Approve	Total Disapprove	Strongly Approve	Somewhat Approve	Neutral	Somewhat Disapprove	Strongly Disapprove	Not Sure
December 15-17, 2012	7%	74%	1%	6%	16%	27%	47%	3%
December 8-10, 2012	8%	70%	2%	6%	15%	24%	46%	7%
December 1-3, 2012	10%	69%	2%	8%	15%	30%	39%	7%
November 24-26, 2012	11%	65%	3%	8%	16%	29%	36%	9%
November 17-19, 2012	9%	66%	2%	7%	17%	28%	38%	8%
November 10-12, 2012	10%	71%	2%	8%	15%	24%	47%	4%
November 2-4, 2012	9%	73%	1%	8%	13%	29%	44%	5%
October 26-28, 2012	9%	73%	2%	7%	13%	27%	46%	4%
October 20-22, 2012	10%	71%	1%	9%	15%	27%	44%	5%
October 13-15, 2012	9%	72%	1%	8%	14%	28%	44%	5%
One Year Ago	11%	74%	3%	8%	10%	21%	53%	5%

Congress Approval

"Do you approve of the way the
U.S. Congress is handling its job?"

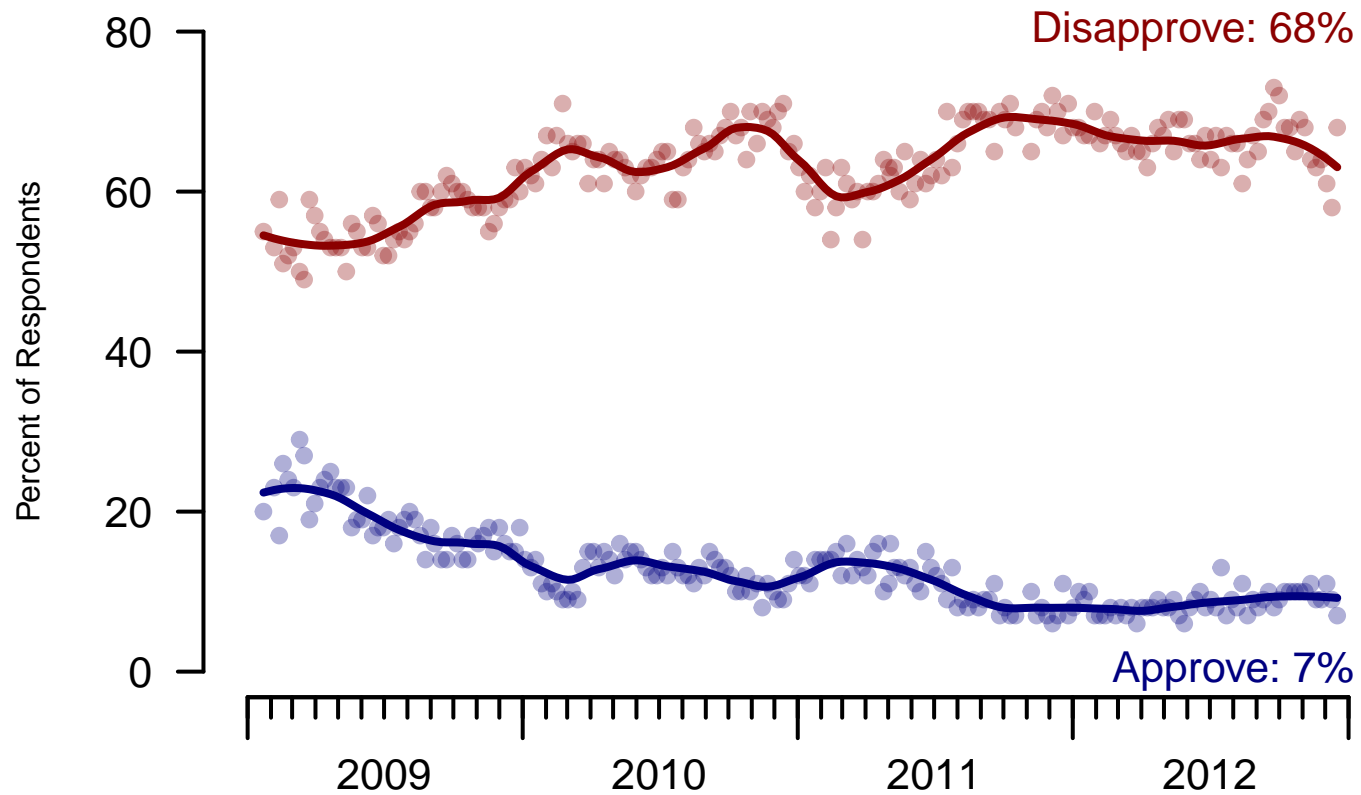


Figure 3: Congress Approval – All Adults

Congress Approval

"Do you approve of the way the
U.S. Congress is handling its job?"

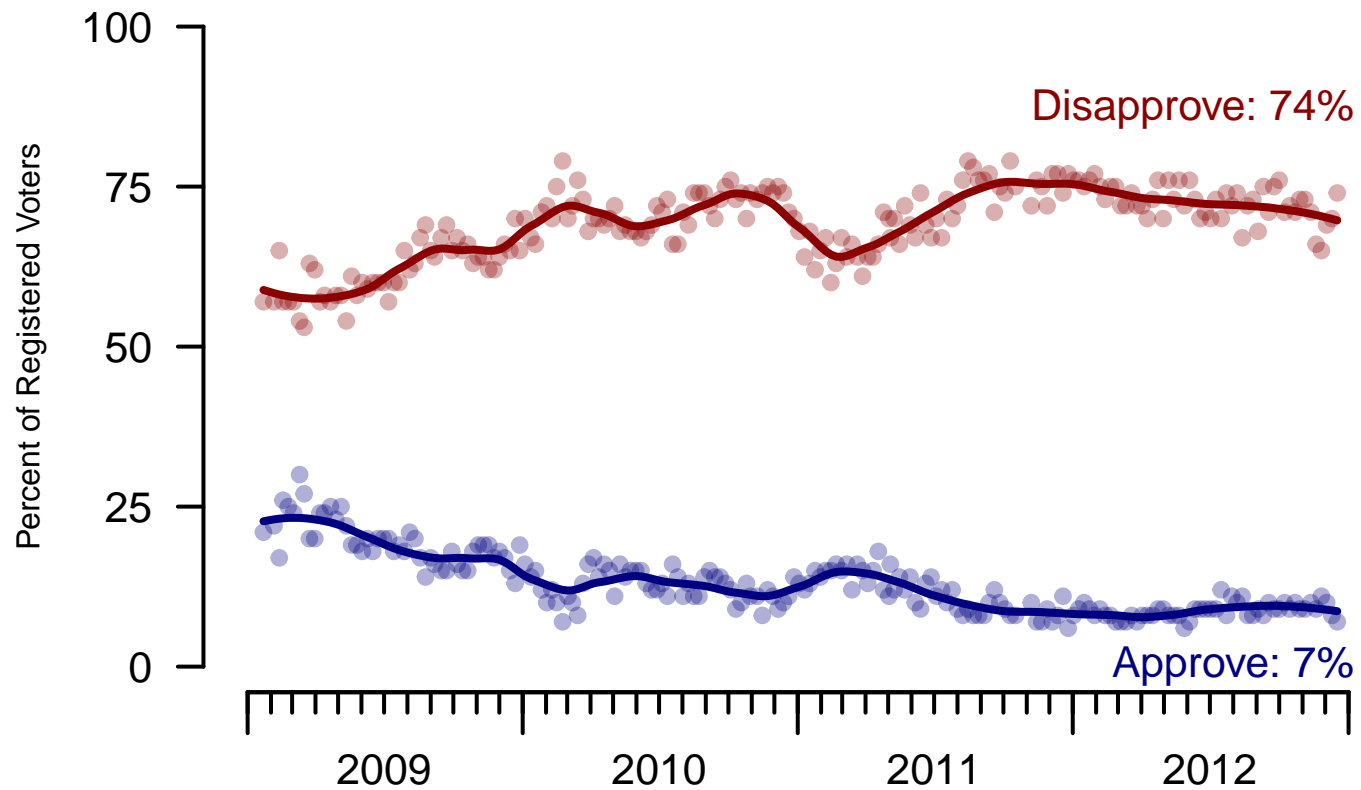


Figure 4: Congress Approval – Registered Voters

4. Approval of U.S. Congress – This Week – All Adults

Overall, do you approve or disapprove of the way that the United States Congress is handling its job?

	Total	Age				Race			Gender		Education		
		18-29	30-44	45-64	65+	White	Black	Hispanic	Male	Female	HS or less	Some college	College graduate
Strongly approve	1%	–	2%	1%	–	0%	1%	5%	0%	2%	2%	0%	1%
Somewhat approve	6%	6%	6%	7%	6%	6%	7%	8%	6%	7%	5%	9%	5%
Neither approve nor disapprove	16%	20%	24%	11%	8%	15%	26%	8%	12%	19%	16%	17%	12%
Somewhat disapprove	26%	29%	24%	25%	26%	26%	18%	31%	21%	30%	26%	22%	31%
Strongly disapprove	42%	31%	36%	47%	57%	46%	35%	30%	52%	33%	38%	45%	47%
Not sure	9%	15%	8%	9%	3%	7%	13%	19%	9%	10%	13%	7%	5%
Totals (Unweighted N)	100% (998)	100% (117)	100% (133)	100% (625)	100% (123)	100% (773)	100% (126)	100% (99)	100% (477)	100% (521)	100% (368)	100% (339)	100% (291)

	Total	Party ID			Ideology			Region				Family Income		
		Dem	Rep	Ind	Lib	Mod	Con	North-east	Mid-west	South	West	Under 40	40-100	100+
Strongly approve	1%	2%	0%	0%	1%	2%	0%	0%	1%	0%	2%	1%	0%	1%
Somewhat approve	6%	9%	7%	3%	9%	3%	7%	8%	7%	6%	5%	5%	6%	4%
Neither approve nor disapprove	16%	20%	18%	10%	12%	18%	16%	14%	10%	21%	14%	18%	15%	26%
Somewhat disapprove	26%	22%	31%	29%	19%	25%	36%	19%	25%	28%	27%	29%	28%	19%
Strongly disapprove	42%	40%	36%	50%	52%	43%	38%	43%	50%	39%	40%	34%	45%	49%
Not sure	9%	8%	8%	7%	6%	9%	3%	15%	7%	6%	12%	13%	6%	1%
Totals (Unweighted N)	100% (998)	100% (388)	100% (264)	100% (299)	100% (267)	100% (340)	100% (353)	100% (146)	100% (214)	100% (379)	100% (259)	100% (345)	100% (385)	100% (92)

5. Direction of country – Historical

Would you say things in this country today are...

	All Adults		
	Right Track	Wrong Direction	Not Sure
December 15-17, 2012	31%	53%	16%
December 8-10, 2012	34%	49%	18%
December 1-3, 2012	33%	51%	16%
November 24-26, 2012	38%	53%	9%
November 17-19, 2012	34%	54%	12%
November 10-12, 2012	39%	52%	9%
November 2-4, 2012	38%	54%	9%
October 26-28, 2012	36%	53%	11%
October 20-22, 2012	34%	57%	9%
October 13-15, 2012	33%	57%	10%
One Year Ago	20%	65%	15%

	Registered Voters		
	Right Track	Wrong Direction	Not Sure
December 15-17, 2012	34%	52%	14%
December 8-10, 2012	35%	53%	12%
December 1-3, 2012	35%	53%	12%
November 24-26, 2012	37%	52%	11%
November 17-19, 2012	35%	55%	10%
November 10-12, 2012	41%	53%	6%
November 2-4, 2012	40%	54%	6%
October 26-28, 2012	38%	54%	8%
October 20-22, 2012	35%	58%	8%
October 13-15, 2012	37%	55%	8%
One Year Ago	22%	66%	12%

Direction of Country

"Would you say things in this country today are generally headed in the right direction or off on the wrong track?"

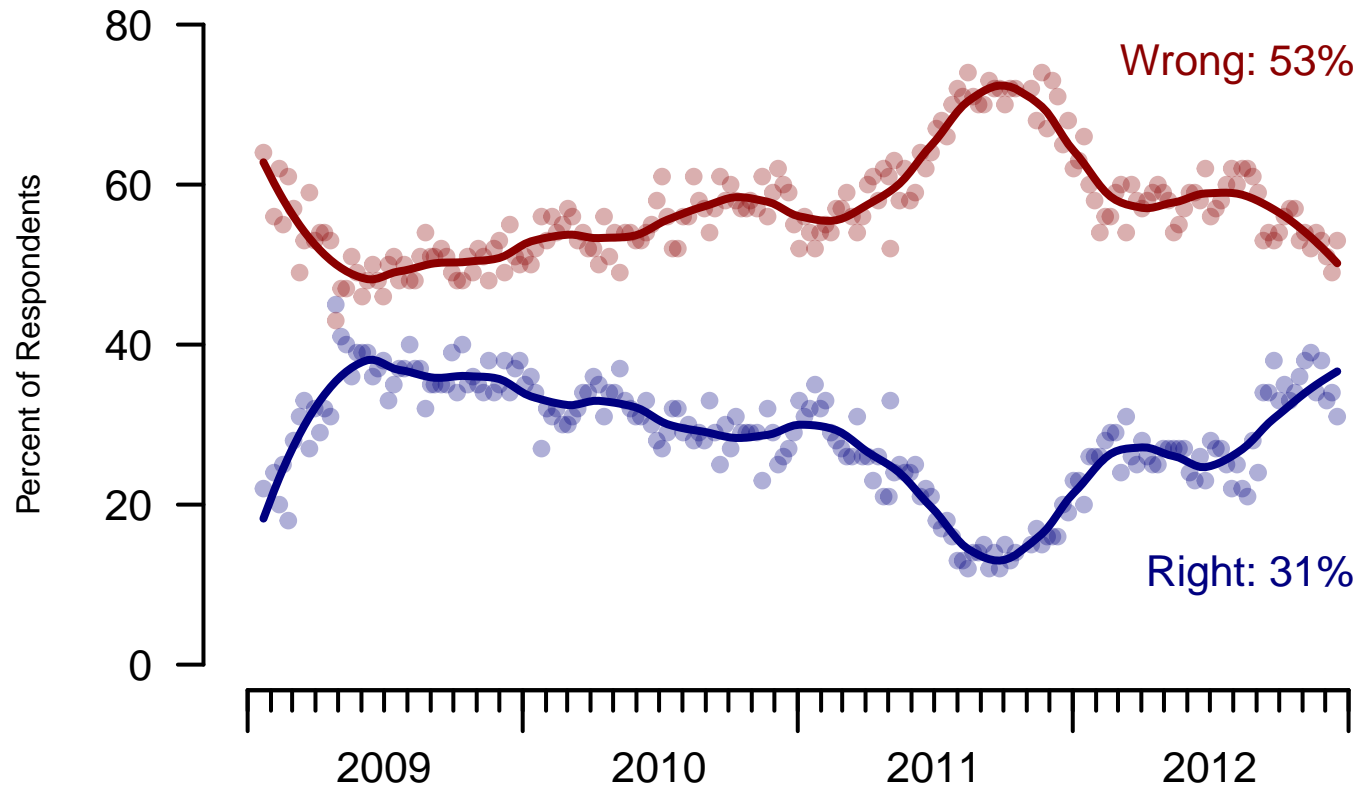


Figure 5: Direction of Country – All Adults

Direction of Country

"Would you say things in this country today are generally headed in the right direction or off on the wrong track?"

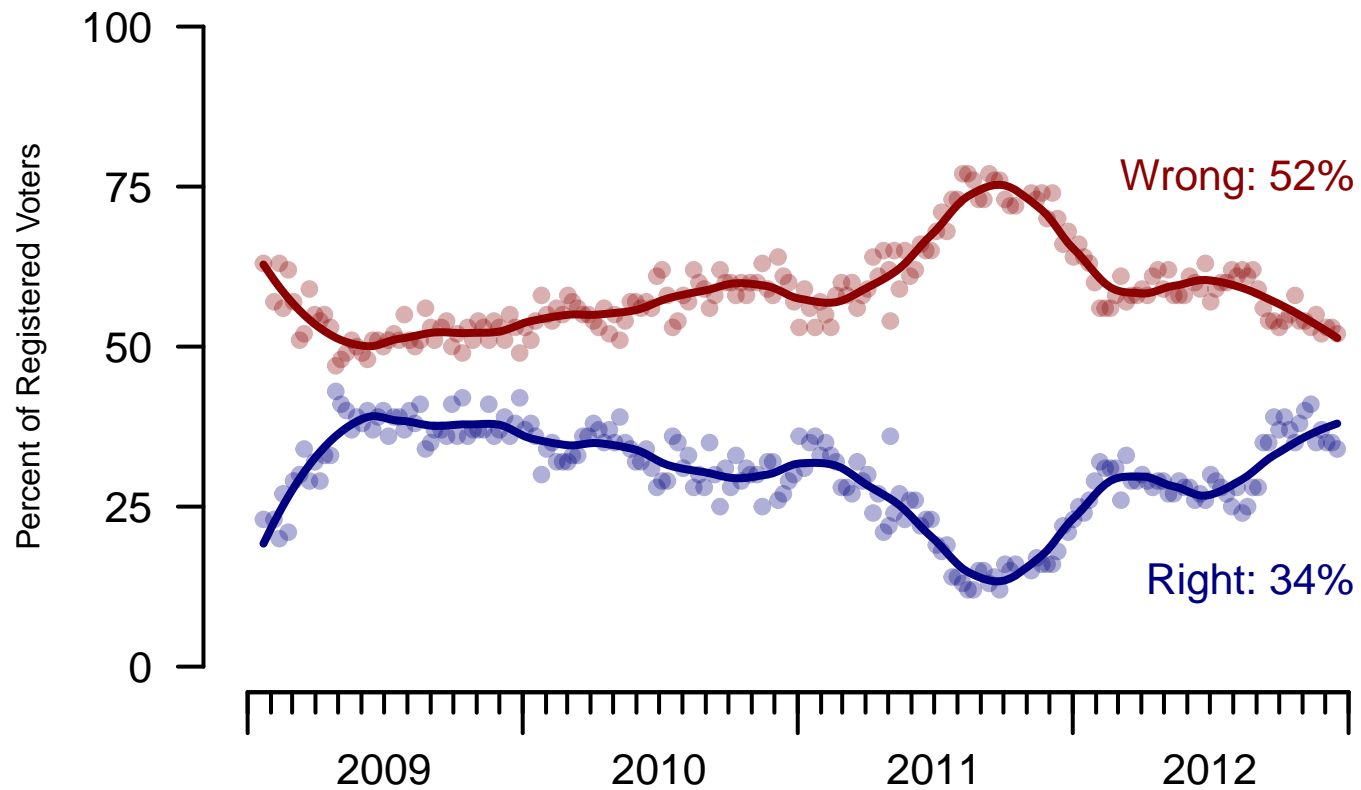


Figure 6: Direction of Country – Registered Voters

6. Direction of Country – This Week – All Adults

Would you say things in this country today are...

	Total	Age				Race			Gender		Education		
		18-29	30-44	45-64	65+	White	Black	Hispanic	Male	Female	HS or less	Some college	College graduate
Generally headed in the right direction	31%	31%	28%	32%	30%	26%	59%	24%	34%	28%	30%	29%	35%
Off on the wrong track	53%	45%	56%	54%	57%	60%	16%	54%	54%	52%	56%	56%	43%
Not sure	16%	24%	16%	14%	13%	14%	25%	22%	12%	20%	13%	15%	23%
Totals (Unweighted N)	100% (999)	100% (117)	100% (134)	100% (625)	100% (123)	100% (774)	100% (127)	100% (98)	100% (476)	100% (523)	100% (368)	100% (339)	100% (292)

	Total	Party ID			Ideology			Region				Family Income		
		Dem	Rep	Ind	Lib	Mod	Con	North-east	Mid-west	South	West	Under 40	40-100	100+
Generally headed in the right direction	31%	59%	10%	20%	55%	36%	8%	31%	36%	26%	33%	29%	30%	37%
Off on the wrong track	53%	23%	85%	61%	25%	46%	85%	53%	54%	53%	51%	53%	56%	54%
Not sure	16%	19%	5%	20%	19%	18%	7%	16%	10%	21%	16%	18%	14%	9%
Totals (Unweighted N)	100% (999)	100% (389)	100% (264)	100% (299)	100% (267)	100% (341)	100% (352)	100% (146)	100% (214)	100% (380)	100% (259)	100% (346)	100% (384)	100% (92)

The Economist/YouGov Poll
December 15-17, 2012



Sponsorship	<i>The Economist</i>
Fieldwork	YouGov
Interviewing Dates	December 15-17, 2012
Target population	U.S. citizens, aged 18 and over.
Sampling method	Respondents were selected from YouGov's panel using sample matching. A random sample (stratified by age, gender, race, education, and region) was selected from the 2005–2007 American Community Survey. Voter registration, turnout, religion, news interest, minor party identification, and non-placement on an ideology scale, were imputed from the 2008 Current Population Survey Registration and Voting Supplement and the Pew Religion in American Life Survey. Matching respondents were selected from the YouGov panel, an opt-in Internet panel.
Weighting	The sample was weighted using propensity scores based on age, gender, race, education, news interest, voter registration, and non-placement on an ideology scale. The weights range from 0.19 to 8.04, with a mean of one and a standard deviation of 1.2.
Number of respondents	1,000
Margin of error	± 4.9% (adjusted for weighting)
Margin of error (Registered Voters)	± 5.1% (adjusted for weighting)
Survey mode	Web-based interviews
Full results	Available online at http://today.yougov.com/news/categories/economist/ .