

Interviewing: October 26-28, 2012
Sample: 1000 Adults nationwide online
687 registered voters nationwide online



806 D Street, SE
Washington, DC 20003

Contact:
Thomas Riehle
Ph: (202) 544-2550

The Economist/YouGov Poll

Weekly Tracking

For immediate release

1. Presidential Vote Preference – Historical

Who will you vote for in the 2012 Presidential election?

	Registered Voters			
	Barack Obama	Mitt Romney	Other	Not sure
October 26-28, 2012	48%	46%	4%	2%
October 20-22, 2012	47%	46%	5%	2%
October 13-15, 2012	48%	43%	5%	3%
October 6-8, 2012	50%	44%	3%	3%
September 29-October 1, 2012	49%	41%	6%	3%
September 22-24, 2012	48%	43%	6%	3%
September 15-17, 2012	49%	44%	3%	3%
September 8-10, 2012	49%	45%	4%	2%
September 1-3, 2012	47%	46%	3%	4%
August 25-27, 2012	46%	47%	4%	4%
One Year Ago	46%	42%	7%	6%

	Likely Voters			
	Barack Obama	Mitt Romney	Other	Not sure
October 26-28, 2012	48%	47%	3%	1%
October 20-22, 2012	48%	46%	4%	2%
October 13-15, 2012	47%	46%	4%	3%
October 6-8, 2012	49%	46%	3%	3%
September 29-October 1, 2012	50%	43%	5%	3%

2. Presidential Vote Preference – This Week – Likely voters

Presidential Vote Preference: Obama vs. Romney

	Age					Race			Gender		Education		
	Total	18-29	30-44	45-64	65+	White	Black	Hispanic	Male	Female	HS or less	Some college	College graduate
Barack Obama	48%	68%	48%	46%	34%	36%	91%	62%	39%	56%	47%	46%	52%
Mitt Romney	47%	26%	45%	50%	66%	58%	5%	38%	54%	42%	50%	50%	41%
Other	3%	7%	5%	2%	–	4%	3%	–	6%	1%	3%	2%	6%
Not sure	1%	–	1%	2%	0%	1%	1%	–	1%	1%	1%	1%	1%
Totals (Unweighted)	100% (686)	100% (119)	100% (165)	100% (282)	100% (120)	100% (492)	100% (118)	100% (76)	100% (322)	100% (364)	100% (202)	100% (259)	100% (225)

	Party ID			Ideology			Region				Family Income			
	Total	Dem	Rep	Ind	Lib	Mod	Con	North-east	Mid-west	South	West	Under 40	40-100	100+
Barack Obama	48%	96%	5%	42%	99%	65%	5%	61%	56%	46%	40%	57%	41%	52%
Mitt Romney	47%	3%	91%	47%	0%	26%	91%	36%	40%	51%	53%	36%	57%	41%
Other	3%	0%	4%	8%	1%	7%	3%	1%	3%	3%	6%	6%	1%	6%
Not sure	1%	0%	0%	4%	–	2%	1%	2%	2%	0%	2%	1%	1%	–
Totals (Unweighted)	100% (686)	100% (289)	100% (200)	100% (183)	100% (188)	100% (234)	100% (243)	100% (107)	100% (154)	100% (242)	100% (183)	100% (266)	100% (247)	100% (63)

Who will you vote for in the 2012 Presidential election?

(Likely voters only)

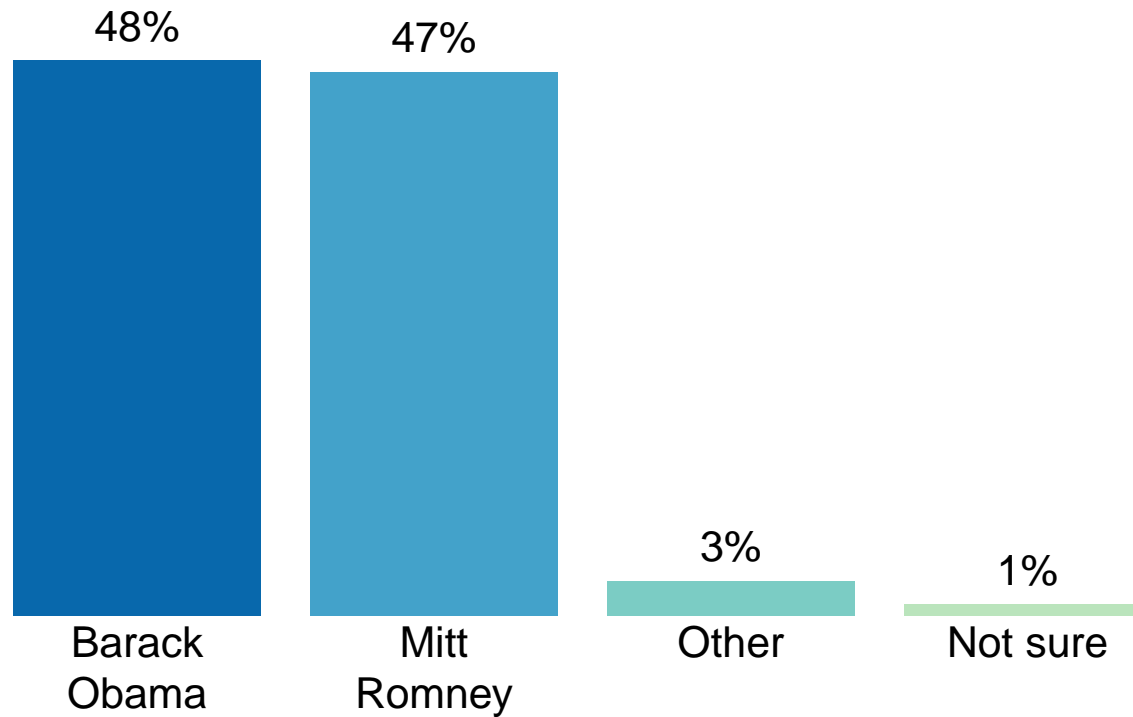


Figure 1: Presidential Vote Preference – Likely Voters

3. Approval of Obama as President – Historical

Do you approve or disapprove of the way Barack Obama is handling his job as President?

	All Adults						
	Total Approve	Total Disapprove	Strongly Approve	Somewhat Approve	Somewhat Disapprove	Strongly Disapprove	Not Sure
October 26-28, 2012	47%	48%	23%	24%	7%	41%	5%
October 20-22, 2012	44%	54%	21%	23%	14%	40%	1%
October 13-15, 2012	46%	52%	20%	26%	11%	41%	3%
October 6-8, 2012	45%	51%	26%	19%	9%	42%	4%
September 29-October 1, 2012	44%	52%	19%	25%	11%	41%	3%
September 22-24, 2012	48%	49%	25%	23%	9%	40%	2%
September 15-17, 2012	48%	48%	26%	22%	9%	39%	4%
September 8-10, 2012	48%	49%	24%	24%	11%	38%	4%
September 1-3, 2012	43%	48%	17%	26%	9%	39%	9%
August 25-27, 2012	41%	50%	17%	24%	14%	36%	9%
One Year Ago	42%	52%	14%	28%	15%	37%	7%

	Registered Voters						
	Total Approve	Total Disapprove	Strongly Approve	Somewhat Approve	Somewhat Disapprove	Strongly Disapprove	Not Sure
October 26-28, 2012	46%	51%	25%	21%	5%	46%	2%
October 20-22, 2012	45%	54%	22%	23%	13%	41%	1%
October 13-15, 2012	48%	50%	23%	25%	10%	40%	2%
October 6-8, 2012	48%	49%	31%	17%	7%	42%	3%
September 29-October 1, 2012	47%	53%	23%	24%	10%	43%	1%
September 22-24, 2012	49%	50%	26%	23%	8%	42%	1%
September 15-17, 2012	49%	48%	27%	22%	8%	40%	3%
September 8-10, 2012	46%	53%	24%	22%	11%	42%	1%
September 1-3, 2012	45%	51%	18%	27%	8%	43%	4%
August 25-27, 2012	43%	55%	18%	25%	13%	42%	2%
One Year Ago	44%	53%	18%	26%	15%	38%	3%

Obama Approval

"Do you approve or disapprove of the way Barack Obama is handling his job as President?"

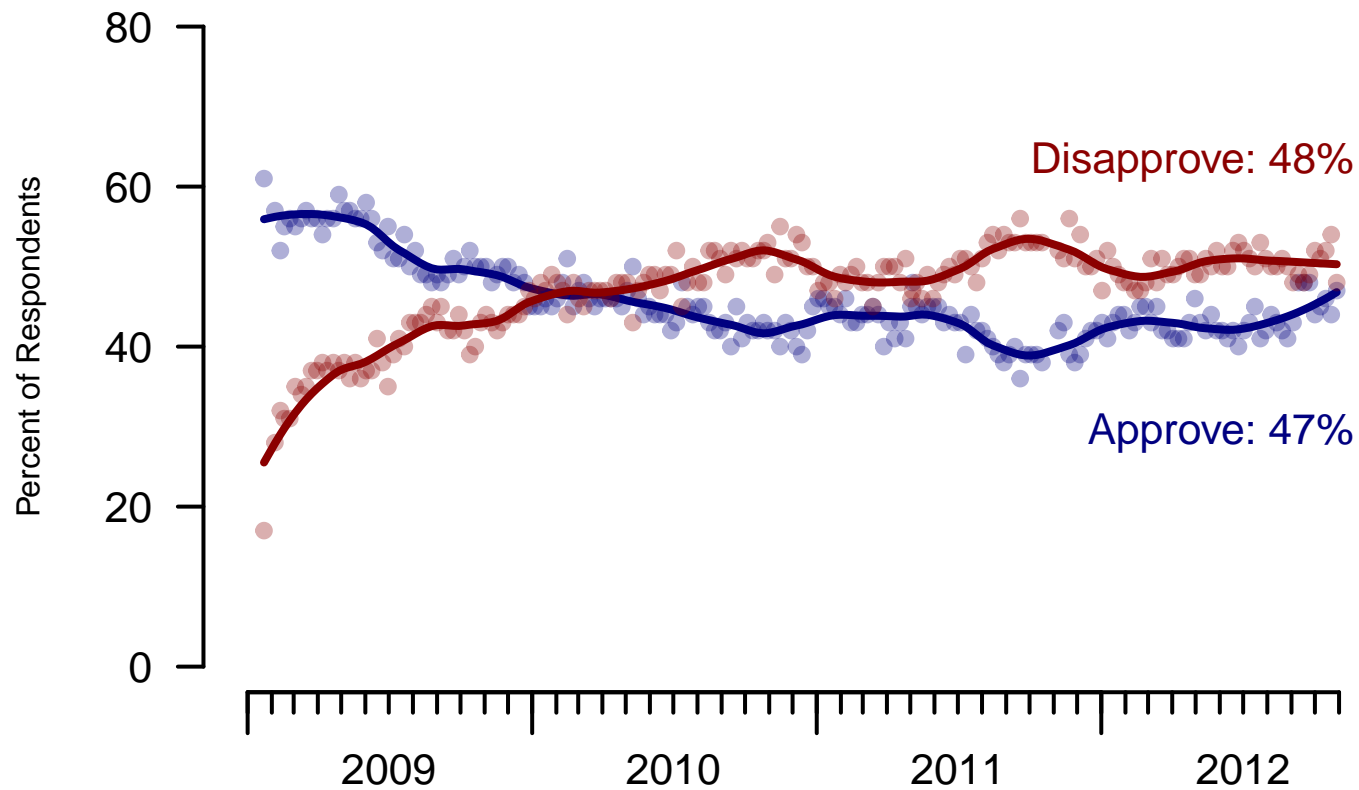


Figure 2: Obama Approval – All Adults

Obama Approval

"Do you approve or disapprove of the way Barack Obama is handling his job as President?"

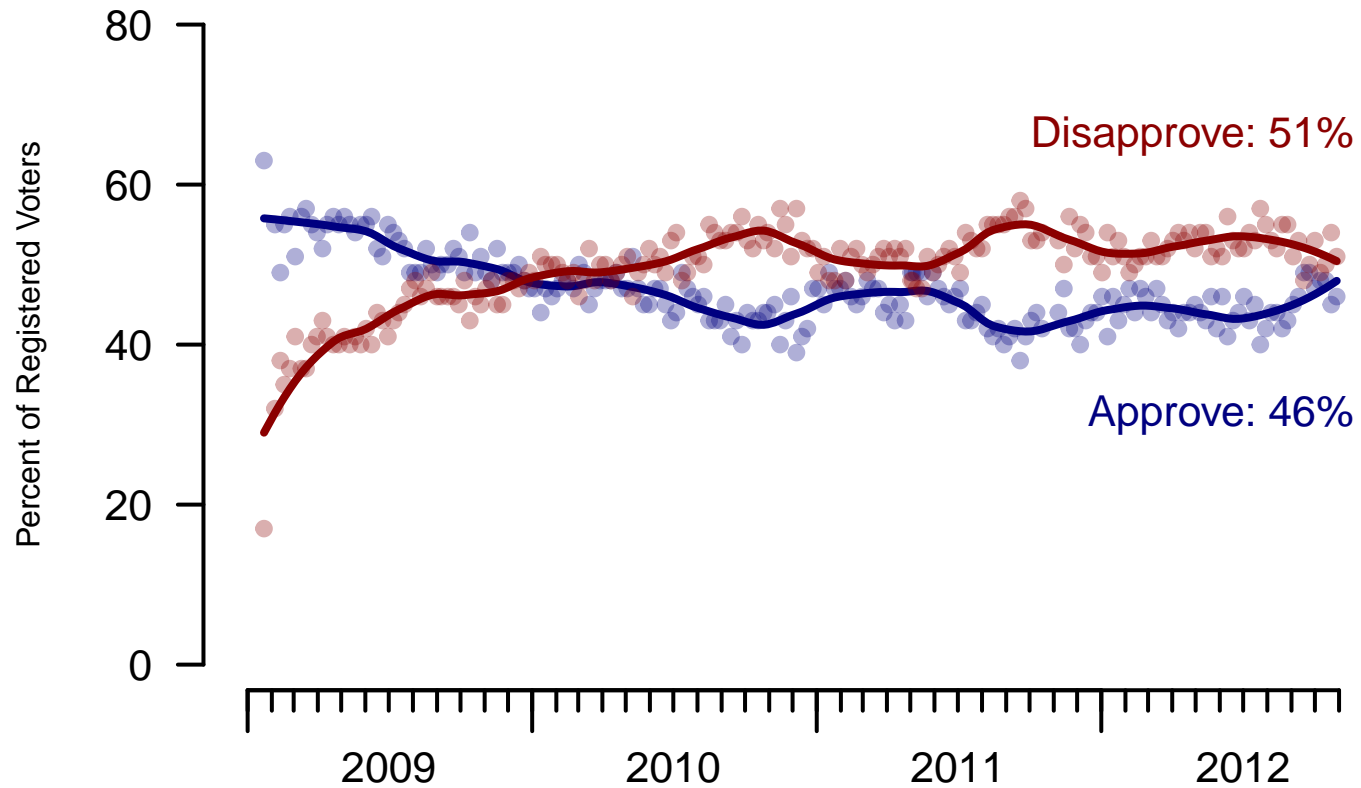


Figure 3: Obama Approval – Registered Voters

4. Approval of Obama as President – This Week – All Adults

Do you approve or disapprove of the way Barack Obama is handling his job as President?

	Total	Age				Race			Gender		Education		
		18-29	30-44	45-64	65+	White	Black	Hispanic	Male	Female	HS or less	Some college	College graduate
Strongly Approve	23%	26%	20%	19%	30%	17%	49%	25%	16%	29%	23%	23%	22%
Somewhat Approve	24%	33%	26%	24%	7%	22%	29%	30%	26%	22%	22%	21%	31%
Somewhat Disapprove	7%	10%	6%	8%	4%	8%	4%	7%	8%	7%	10%	4%	8%
Strongly Disapprove	41%	20%	43%	46%	56%	51%	4%	30%	46%	35%	40%	45%	36%
Not Sure	5%	11%	4%	4%	2%	3%	14%	8%	4%	6%	6%	7%	3%
Totals (Unweighted)	100% (998)	100% (205)	100% (225)	100% (422)	100% (146)	100% (736)	100% (148)	100% (114)	100% (470)	100% (528)	100% (384)	100% (343)	100% (271)

	Total	Party ID			Ideology			Region				Family Income		
		Dem	Rep	Ind	Lib	Mod	Con	North-east	Mid-west	South	West	Under 40	40-100	100+
Strongly Approve	23%	53%	3%	11%	47%	28%	4%	31%	21%	19%	24%	27%	19%	22%
Somewhat Approve	24%	36%	6%	30%	38%	35%	6%	23%	29%	24%	21%	25%	20%	30%
Somewhat Disapprove	7%	5%	7%	11%	8%	9%	6%	5%	11%	7%	7%	9%	8%	5%
Strongly Disapprove	41%	3%	81%	44%	2%	25%	82%	24%	34%	49%	44%	32%	51%	39%
Not Sure	5%	3%	2%	4%	6%	3%	2%	17%	5%	2%	4%	6%	2%	4%
Totals (Unweighted)	100% (998)	100% (376)	100% (263)	100% (274)	100% (247)	100% (331)	100% (320)	100% (169)	100% (216)	100% (360)	100% (253)	100% (442)	100% (326)	100% (74)

5. Approval of U.S. Congress – Historical

Overall, do you approve or disapprove of the way that the United States Congress is handling its job?

All Adults

	Total Approve	Total Disapprove	Strongly Approve	Somewhat Approve	Neutral	Somewhat Disapprove	Strongly Disapprove	Not Sure
October 26-28, 2012	10%	69%	2%	8%	16%	29%	40%	7%
October 20-22, 2012	10%	65%	2%	8%	19%	24%	41%	6%
October 13-15, 2012	10%	68%	1%	9%	16%	26%	42%	6%
October 6-8, 2012	10%	68%	2%	8%	16%	25%	43%	6%
September 29-October 1, 2012	9%	72%	2%	7%	13%	27%	45%	6%
September 22-24, 2012	8%	73%	2%	6%	15%	27%	46%	4%
September 15-17, 2012	10%	70%	2%	8%	14%	26%	44%	6%
September 8-10, 2012	9%	69%	3%	6%	15%	26%	43%	8%
September 1-3, 2012	8%	65%	1%	7%	17%	23%	42%	10%
August 25-27, 2012	9%	67%	1%	8%	15%	23%	44%	10%
One Year Ago	10%	65%	1%	9%	16%	22%	43%	10%

Registered Voters

	Total Approve	Total Disapprove	Strongly Approve	Somewhat Approve	Neutral	Somewhat Disapprove	Strongly Disapprove	Not Sure
October 26-28, 2012	9%	73%	2%	7%	13%	27%	46%	4%
October 20-22, 2012	10%	71%	1%	9%	15%	27%	44%	5%
October 13-15, 2012	9%	72%	1%	8%	14%	28%	44%	5%
October 6-8, 2012	10%	71%	2%	8%	15%	25%	46%	3%
September 29-October 1, 2012	9%	76%	2%	7%	11%	27%	49%	3%
September 22-24, 2012	9%	75%	2%	7%	14%	28%	47%	3%
September 15-17, 2012	10%	71%	2%	8%	13%	26%	45%	5%
September 8-10, 2012	8%	75%	2%	6%	12%	27%	48%	5%
September 1-3, 2012	9%	68%	1%	8%	17%	22%	46%	5%
August 25-27, 2012	8%	73%	1%	7%	14%	23%	50%	5%
One Year Ago	10%	72%	2%	8%	13%	25%	47%	6%

Congress Approval

"Do you approve of the way the
U.S. Congress is handling its job?"

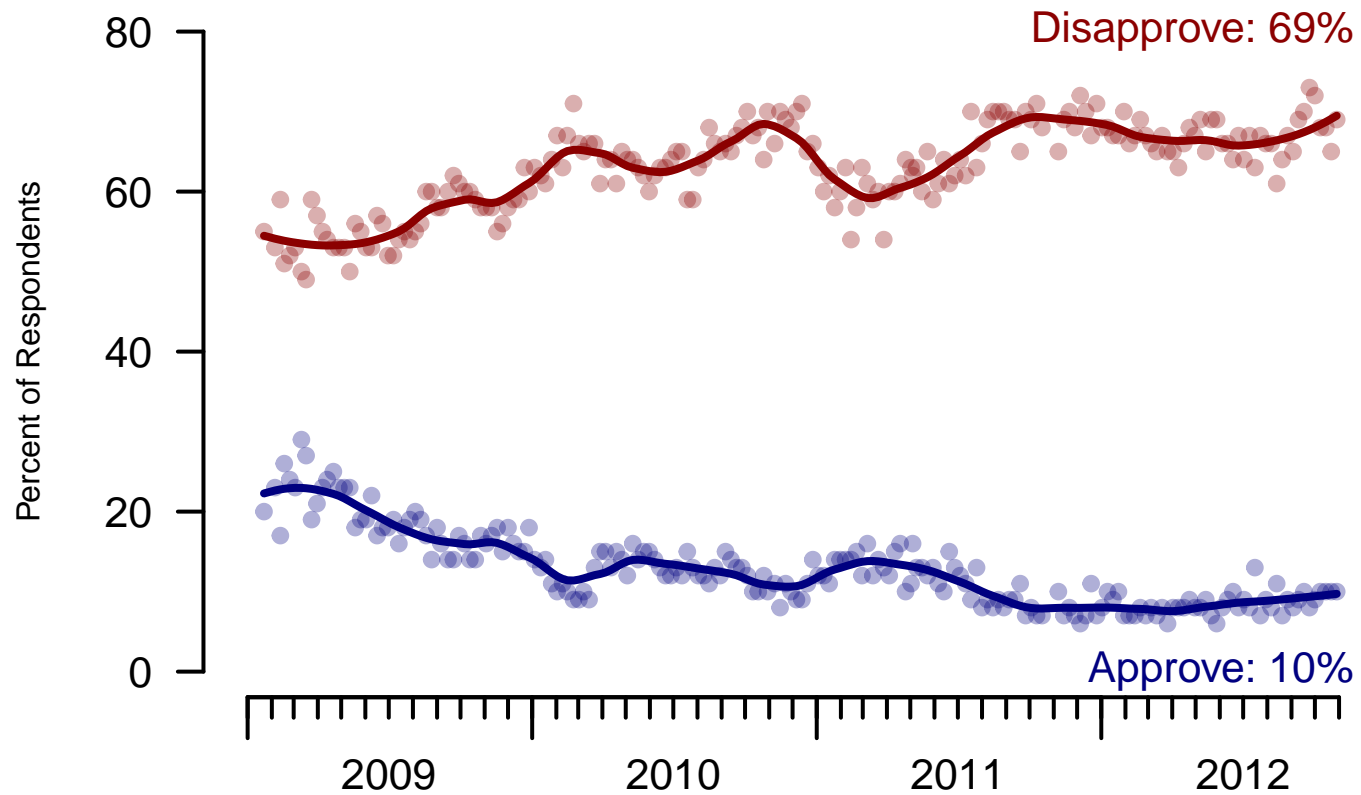


Figure 4: Congress Approval – All Adults

Congress Approval

"Do you approve of the way the
U.S. Congress is handling its job?"

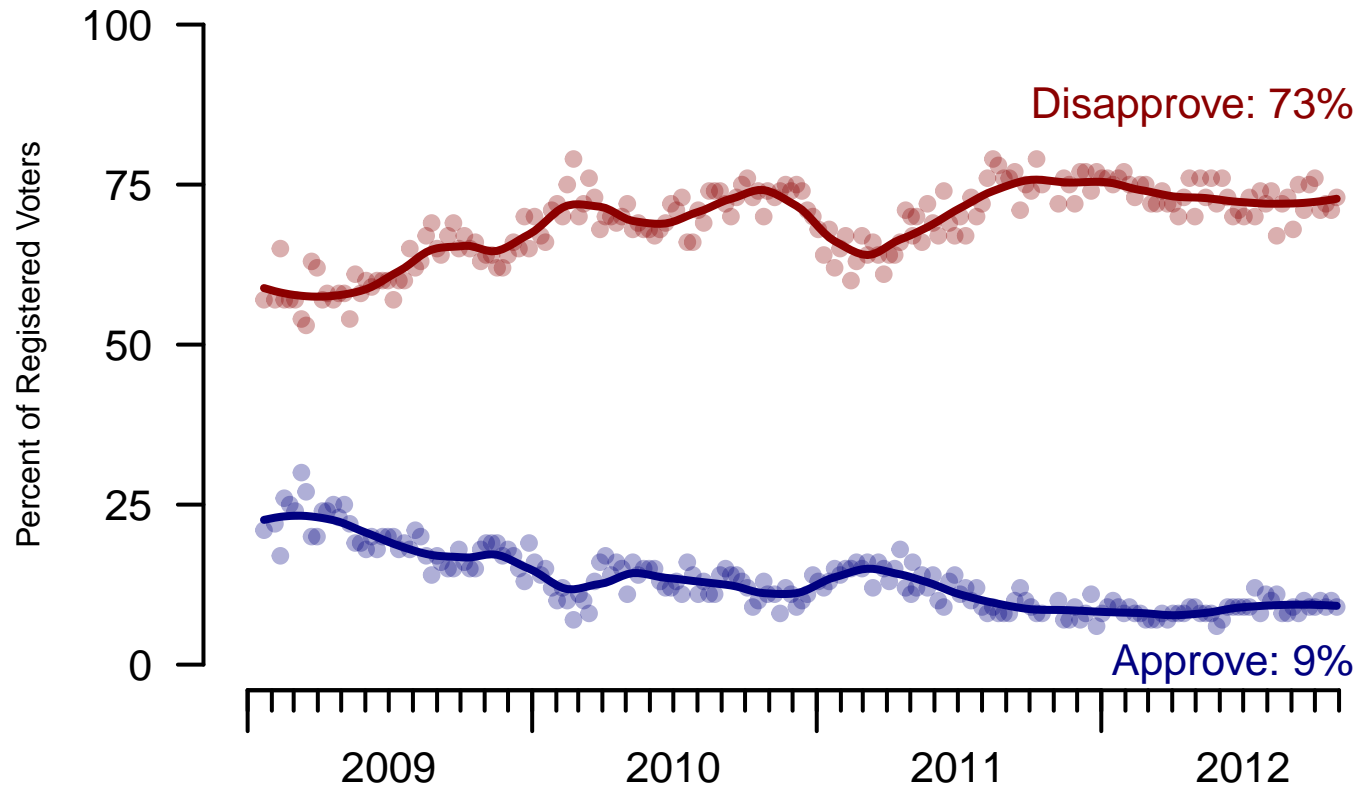


Figure 5: Congress Approval – Registered Voters

6. Approval of U.S. Congress – This Week – All Adults

Overall, do you approve or disapprove of the way that the United States Congress is handling its job?

	Total	Age				Race			Gender		Education		
		18-29	30-44	45-64	65+	White	Black	Hispanic	Male	Female	HS or less	Some college	College graduate
Strongly approve	2%	2%	3%	0%	1%	0%	3%	6%	2%	2%	2%	2%	1%
Somewhat approve	8%	13%	6%	6%	6%	8%	6%	8%	7%	8%	7%	12%	3%
Neither approve nor disapprove	16%	11%	19%	17%	13%	14%	20%	16%	15%	16%	20%	15%	10%
Somewhat disapprove	29%	29%	25%	28%	36%	30%	24%	25%	29%	28%	26%	30%	31%
Strongly disapprove	40%	30%	41%	45%	41%	43%	34%	33%	43%	37%	37%	36%	49%
Not sure	7%	15%	6%	3%	3%	4%	13%	12%	5%	9%	8%	6%	6%
Totals (Unweighted)	100% (997)	100% (204)	100% (225)	100% (422)	100% (146)	100% (735)	100% (148)	100% (114)	100% (469)	100% (528)	100% (383)	100% (343)	100% (271)

	Total	Party ID			Ideology			Region				Family Income		
		Dem	Rep	Ind	Lib	Mod	Con	North-east	Mid-west	South	West	Under 40	40-100	100+
Strongly approve	2%	3%	1%	0%	3%	1%	1%	2%	1%	2%	1%	2%	2%	—
Somewhat approve	8%	12%	7%	4%	11%	6%	7%	4%	7%	9%	8%	8%	7%	4%
Neither approve nor disapprove	16%	17%	18%	8%	9%	10%	20%	15%	14%	18%	14%	21%	11%	4%
Somewhat disapprove	29%	24%	36%	27%	30%	25%	34%	29%	28%	26%	32%	25%	28%	39%
Strongly disapprove	40%	39%	35%	54%	37%	54%	35%	32%	41%	41%	43%	36%	47%	49%
Not sure	7%	5%	3%	7%	9%	3%	3%	18%	9%	4%	3%	8%	5%	4%
Totals (Unweighted)	100% (997)	100% (375)	100% (264)	100% (273)	100% (247)	100% (330)	100% (320)	100% (169)	100% (216)	100% (357)	100% (255)	100% (440)	100% (327)	100% (74)

7. Direction of country – Historical

Would you say things in this country today are...

	All Adults		
	Right Track	Wrong Direction	Not Sure
October 26-28, 2012	36%	53%	11%
October 20-22, 2012	34%	57%	9%
October 13-15, 2012	33%	57%	10%
October 6-8, 2012	35%	56%	9%
September 29-October 1, 2012	33%	54%	13%
September 22-24, 2012	38%	53%	9%
September 15-17, 2012	34%	54%	12%
September 8-10, 2012	34%	53%	13%
September 1-3, 2012	24%	59%	17%
August 25-27, 2012	28%	61%	11%
One Year Ago	15%	72%	13%

	Registered Voters		
	Right Track	Wrong Direction	Not Sure
October 26-28, 2012	38%	54%	8%
October 20-22, 2012	35%	58%	8%
October 13-15, 2012	37%	55%	8%
October 6-8, 2012	39%	54%	7%
September 29-October 1, 2012	37%	53%	10%
September 22-24, 2012	39%	54%	7%
September 15-17, 2012	35%	54%	11%
September 8-10, 2012	35%	56%	10%
September 1-3, 2012	28%	59%	13%
August 25-27, 2012	28%	62%	9%
One Year Ago	15%	74%	10%

Direction of Country

"Would you say things in this country today are generally headed in the right direction or off on the wrong track?"

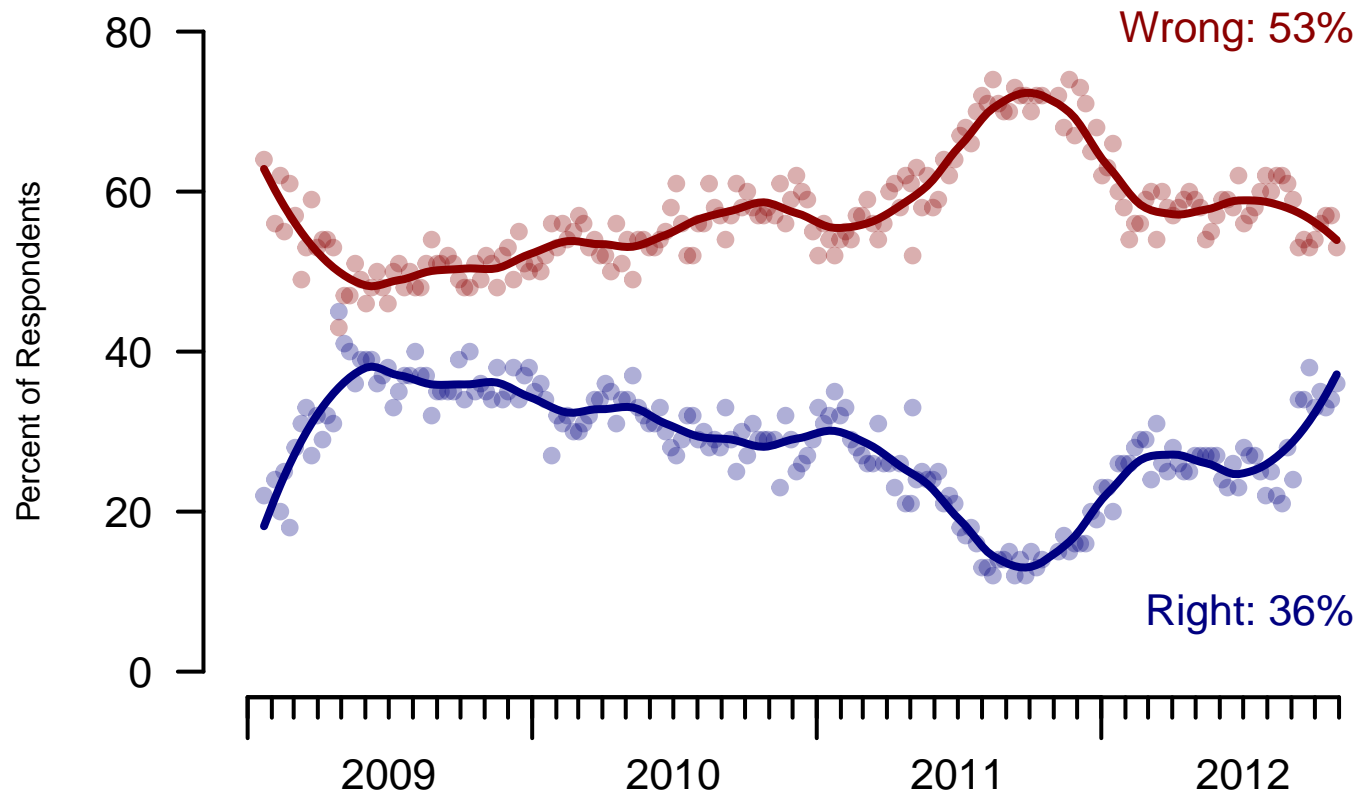


Figure 6: Direction of Country – All Adults

Direction of Country

"Would you say things in this country today are generally headed in the right direction or off on the wrong track?"

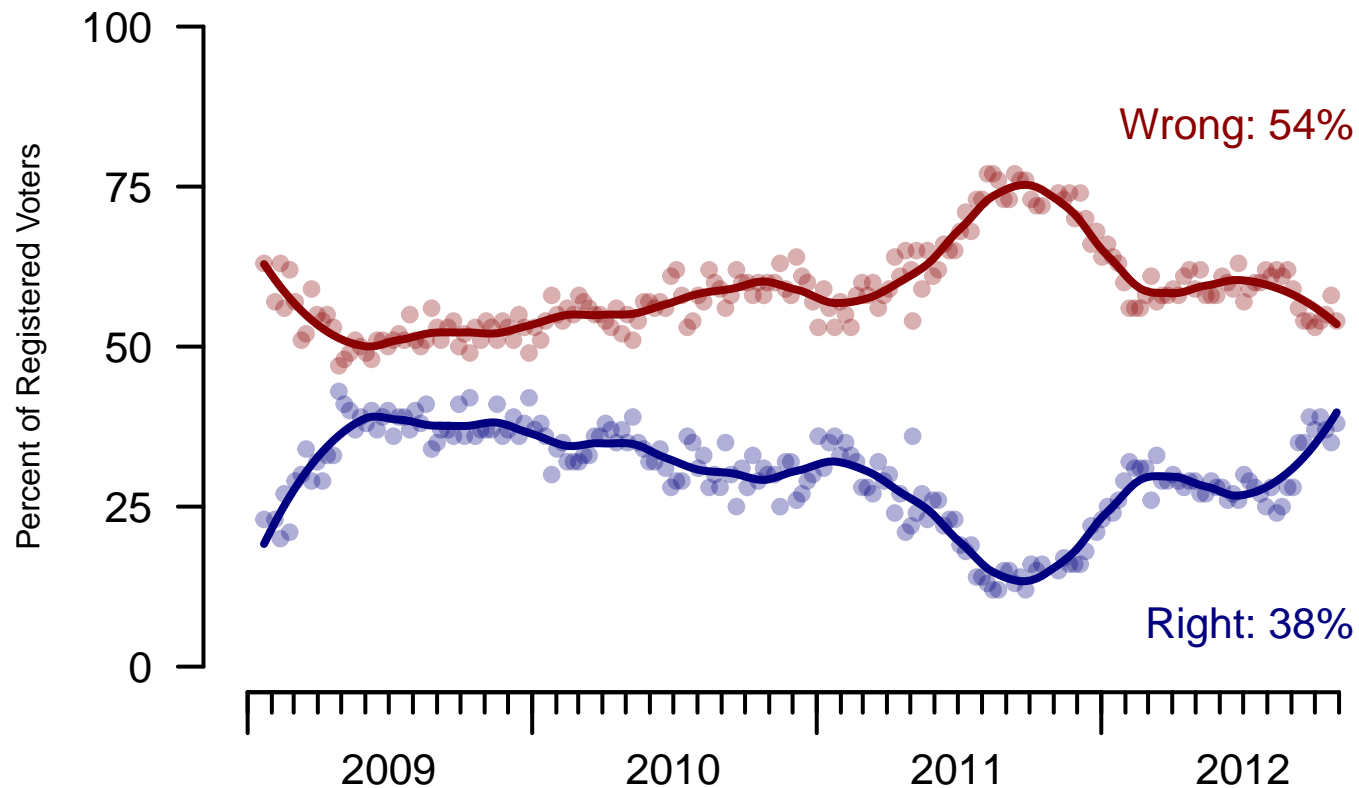


Figure 7: Direction of Country – Registered Voters

8. Direction of Country – This Week – All Adults

Would you say things in this country today are...

	Total	Age				Race			Gender		Education		
		18-29	30-44	45-64	65+	White	Black	Hispanic	Male	Female	HS or less	Some college	College graduate
Generally headed in the right direction	36%	43%	34%	33%	36%	28%	67%	40%	33%	39%	32%	35%	43%
Off on the wrong track	53%	39%	54%	59%	61%	64%	12%	44%	57%	49%	55%	53%	50%
Not sure	11%	18%	12%	8%	3%	8%	21%	16%	10%	12%	12%	12%	7%
Totals (Unweighted)	100% (998)	100% (205)	100% (225)	100% (421)	100% (147)	100% (737)	100% (148)	100% (113)	100% (470)	100% (528)	100% (384)	100% (344)	100% (270)

	Total	Party ID			Ideology			Region				Family Income		
		Dem	Rep	Ind	Lib	Mod	Con	North-east	Mid-west	South	West	Under 40	40-100	100+
Generally headed in the right direction	36%	75%	5%	28%	71%	45%	7%	42%	41%	30%	37%	39%	32%	39%
Off on the wrong track	53%	16%	89%	60%	15%	43%	90%	40%	46%	62%	53%	45%	64%	55%
Not sure	11%	10%	6%	12%	14%	12%	3%	18%	13%	8%	10%	16%	4%	6%
Totals (Unweighted)	100% (998)	100% (375)	100% (263)	100% (275)	100% (247)	100% (331)	100% (321)	100% (169)	100% (216)	100% (358)	100% (255)	100% (442)	100% (326)	100% (74)

9. Congressional Vote Intention – Historical

If an election for U.S. Congress were being held today, who would you vote for in the district where you live?

	Registered Voters				
	The Democratic Party candidate	The Republican Party candidate	Other	Not sure	I would not vote
October 26-28, 2012	41%	44%	2%	12%	1%
October 20-22, 2012	43%	41%	2%	13%	2%
October 13-15, 2012	42%	40%	2%	14%	2%
October 6-8, 2012	45%	39%	2%	12%	1%
September 29-October 1, 2012	42%	41%	2%	13%	2%
September 22-24, 2012	43%	38%	3%	14%	2%
September 15-17, 2012	45%	37%	1%	15%	1%
September 8-10, 2012	45%	41%	3%	10%	1%
September 1-3, 2012	44%	38%	2%	14%	2%
August 25-27, 2012	40%	42%	2%	14%	2%
One Year Ago	41%	39%	1%	17%	3%

	Likely Voters				
	The Democratic Party candidate	The Republican Party candidate	Other	Not sure	I would not vote
October 26-28, 2012	42%	45%	2%	10%	0%
October 20-22, 2012	44%	42%	2%	12%	0%
October 13-15, 2012	42%	43%	2%	13%	1%
October 6-8, 2012	45%	41%	2%	11%	1%
September 29-October 1, 2012	43%	42%	2%	13%	0%

10. Congressional Vote Intention – This Week – Likely Voters

If an election for U.S. Congress were being held today, who would you vote for in the district where you live?

	Total	Age				Race			Gender		Education		
		18-29	30-44	45-64	65+	White	Black	Hispanic	Male	Female	HS or less	Some college	College graduate
The Democratic Party candidate	41%	60%	41%	41%	26%	31%	76%	56%	36%	46%	40%	40%	44%
The Republican Party candidate	45%	20%	46%	46%	61%	56%	7%	26%	51%	39%	44%	46%	43%
Other	2%	2%	2%	3%	2%	2%	0%	3%	2%	2%	2%	2%	4%
Not sure	10%	18%	8%	9%	9%	9%	14%	11%	9%	12%	11%	11%	8%
I would not vote	0%	–	–	0%	–	0%	–	–	–	0%	–	0%	–
Totals	(688)	(119)	(166)	(282)	(121)	(493)	(118)	(77)	(323)	(365)	(202)	(259)	(227)

	Total	Party ID			Ideology			Region				Family Income		
		Dem	Rep	Ind	Lib	Mod	Con	North-east	Mid-west	South	West	Under 40	40-100	100+
The Democratic Party candidate	41%	89%	4%	29%	90%	52%	6%	49%	48%	41%	34%	48%	36%	46%
The Republican Party candidate	45%	1%	88%	46%	0%	26%	86%	29%	40%	49%	49%	34%	52%	45%
Other	2%	2%	1%	5%	1%	3%	2%	6%	2%	1%	2%	2%	2%	–
Not sure	10%	6%	6%	20%	8%	18%	5%	12%	9%	8%	14%	15%	9%	9%
I would not vote	0%	–	–	0%	0%	–	–	–	–	0%	–	0%	–	–
Totals	(688)	(290)	(201)	(183)	(189)	(234)	(244)	(107)	(154)	(243)	(184)	(266)	(247)	(63)

If an election for U.S. Congress were being held today, who would you vote for in the district where you live?

(Likely voters only)

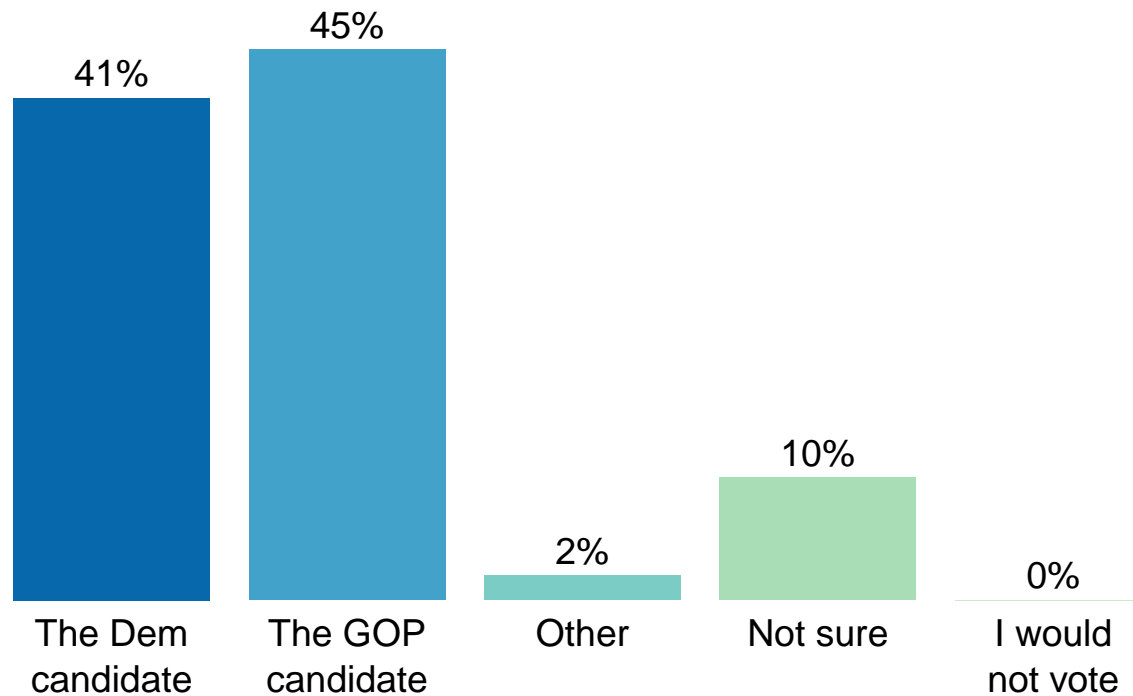


Figure 8: Congressional Vote Intention – Likely Voters

Sponsorship	<i>The Economist</i>
Fieldwork	YouGov
Interviewing Dates	October 26-28, 2012
Target population	U.S. citizens, aged 18 and over.
Sampling method	Respondents were selected from YouGov's panel using sample matching. A random sample (stratified by age, gender, race, education, and region) was selected from the 2005–2007 American Community Survey. Voter registration, turnout, religion, news interest, minor party identification, and non-placement on an ideology scale, were imputed from the 2008 Current Population Survey Registration and Voting Supplement and the Pew Religion in American Life Survey. Matching respondents were selected from the YouGov panel, an opt-in Internet panel.
Weighting	The sample was weighted using propensity scores based on age, gender, race, education, news interest, voter registration, and non-placement on an ideology scale. The weights range from 0.03 to 7.37, with a mean of one and a standard deviation of 1.1.
Number of respondents	1,000
Margin of error	± 4.6% (adjusted for weighting)
Margin of error (Registered Voters)	± 5.3% (adjusted for weighting)
Survey mode	Web-based interviews
Full results	Available online at http://today.yougov.com/news/categories/economist/ .