

Interviewing: October 20-22, 2012
Sample: 1000 Adults nationwide online
803 registered voters nationwide online



806 D Street, SE
Washington, DC 20003

Contact:
Thomas Riehle
Ph: (202) 544-2550

The Economist/YouGov Poll

Weekly Tracking

For immediate release

1. Presidential Vote Preference – Historical

Who will you vote for in the 2012 Presidential election?

| | Registered Voters | | | |
|------------------------------|-------------------|-------------|-------|----------|
| | Barack Obama | Mitt Romney | Other | Not sure |
| October 20-22, 2012 | 47% | 46% | 5% | 2% |
| October 13-15, 2012 | 48% | 43% | 5% | 3% |
| October 6-8, 2012 | 50% | 44% | 3% | 3% |
| September 29-October 1, 2012 | 49% | 41% | 6% | 3% |
| September 22-24, 2012 | 48% | 43% | 6% | 3% |
| September 15-17, 2012 | 49% | 44% | 3% | 3% |
| September 8-10, 2012 | 49% | 45% | 4% | 2% |
| September 1-3, 2012 | 47% | 46% | 3% | 4% |
| August 25-27, 2012 | 46% | 47% | 4% | 4% |
| August 18-20, 2012 | 45% | 45% | 4% | 5% |
| One Year Ago | 45% | 41% | 8% | 5% |

| | Likely Voters | | | |
|------------------------------|---------------|-------------|-------|----------|
| | Barack Obama | Mitt Romney | Other | Not sure |
| October 20-22, 2012 | 48% | 46% | 4% | 2% |
| October 6-8, 2012 | 49% | 46% | 3% | 3% |
| September 29-October 1, 2012 | 50% | 43% | 5% | 3% |

2. Presidential Vote Preference – This Week – Likely voters

Presidential Vote Preference: Obama vs. Romney

| | Total | Age | | | | Race | | | Gender | | Education | | |
|------------------------|---------------|---------------|---------------|---------------|---------------|---------------|---------------|--------------|---------------|---------------|---------------|---------------|------------------|
| | | 18-29 | 30-44 | 45-64 | 65+ | White | Black | Hispanic | Male | Female | HS or less | Some college | College graduate |
| Barack Obama | 48% | 52% | 49% | 53% | 32% | 37% | 91% | 61% | 45% | 51% | 44% | 44% | 55% |
| Mitt Romney | 46% | 40% | 40% | 45% | 63% | 56% | 8% | 34% | 47% | 46% | 51% | 52% | 36% |
| Other | 4% | 6% | 7% | 1% | 2% | 4% | 2% | 3% | 6% | 2% | 4% | 2% | 6% |
| Not sure | 2% | 2% | 3% | 1% | 2% | 2% | – | 2% | 2% | 2% | 2% | 2% | 3% |
| Totals (Unweighted) | 100% (825) | 100% (173) | 100% (148) | 100% (366) | 100% (138) | 100% (615) | 100% (123) | 100% (87) | 100% (425) | 100% (400) | 100% (265) | 100% (290) | 100% (270) |

| | Total | Party ID | | | Ideology | | | Region | | | | Family Income | | |
|------------------------|---------------|---------------|---------------|---------------|---------------|---------------|---------------|---------------|---------------|---------------|---------------|---------------|---------------|--------------|
| | | Dem | Rep | Ind | Lib | Mod | Con | North-east | Mid-west | South | West | Under 40 | 40-100 | 100+ |
| Barack Obama | 48% | 96% | 7% | 37% | 92% | 63% | 6% | 49% | 49% | 51% | 42% | 56% | 43% | 51% |
| Mitt Romney | 46% | 3% | 89% | 49% | 4% | 30% | 89% | 39% | 48% | 46% | 50% | 37% | 53% | 45% |
| Other | 4% | 0% | 4% | 9% | 3% | 3% | 4% | 9% | 1% | 2% | 5% | 5% | 2% | 2% |
| Not sure | 2% | 1% | 1% | 5% | 0% | 5% | 1% | 4% | 1% | 1% | 3% | 2% | 1% | 2% |
| Totals (Unweighted) | 100% (825) | 100% (326) | 100% (239) | 100% (238) | 100% (227) | 100% (306) | 100% (265) | 100% (135) | 100% (169) | 100% (304) | 100% (217) | 100% (286) | 100% (317) | 100% (73) |

Who will you vote for in the 2012 Presidential election?

(Likely voters only)

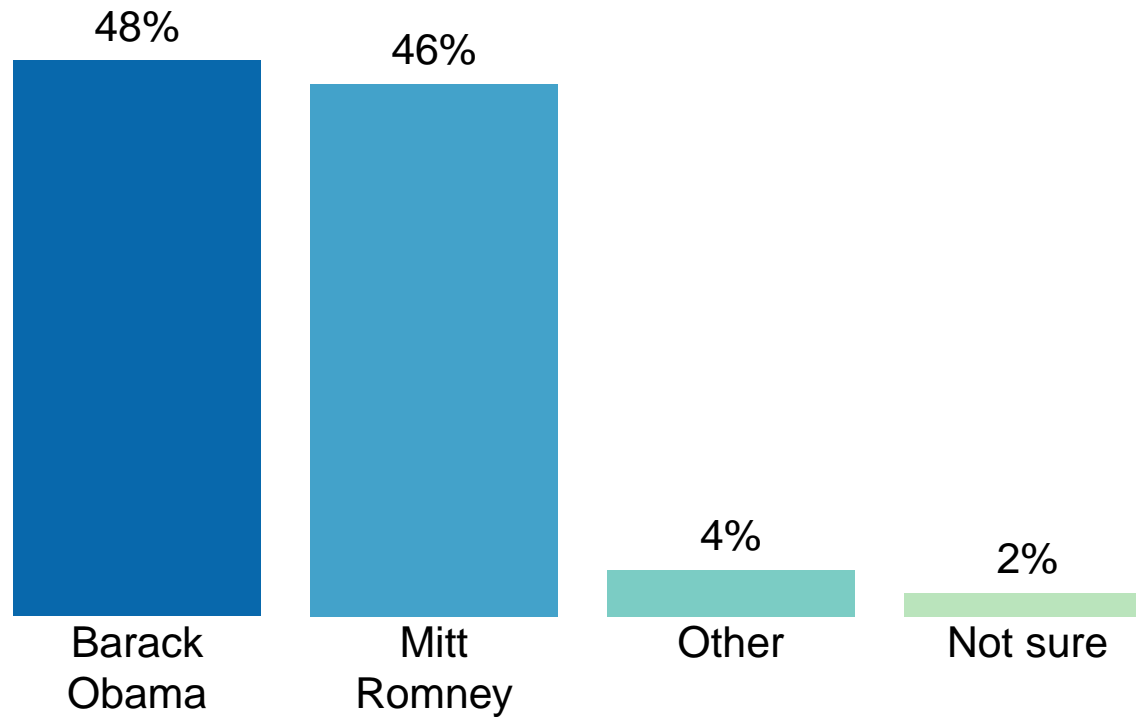


Figure 1: Presidential Vote Preference – Likely Voters

3. Approval of Obama as President – Historical

Do you approve or disapprove of the way Barack Obama is handling his job as President?

| | All Adults | | | | | | |
|------------------------------|---------------|------------------|------------------|------------------|---------------------|---------------------|----------|
| | Total Approve | Total Disapprove | Strongly Approve | Somewhat Approve | Somewhat Disapprove | Strongly Disapprove | Not Sure |
| October 20-22, 2012 | 44% | 54% | 21% | 23% | 14% | 40% | 1% |
| October 13-15, 2012 | 46% | 52% | 20% | 26% | 11% | 41% | 3% |
| October 6-8, 2012 | 45% | 51% | 26% | 19% | 9% | 42% | 4% |
| September 29-October 1, 2012 | 44% | 52% | 19% | 25% | 11% | 41% | 3% |
| September 22-24, 2012 | 48% | 49% | 25% | 23% | 9% | 40% | 2% |
| September 15-17, 2012 | 48% | 48% | 26% | 22% | 9% | 39% | 4% |
| September 8-10, 2012 | 48% | 49% | 24% | 24% | 11% | 38% | 4% |
| September 1-3, 2012 | 43% | 48% | 17% | 26% | 9% | 39% | 9% |
| August 25-27, 2012 | 41% | 50% | 17% | 24% | 14% | 36% | 9% |
| August 18-20, 2012 | 42% | 51% | 15% | 27% | 10% | 41% | 7% |
| One Year Ago | 38% | 53% | 14% | 24% | 15% | 38% | 8% |

| | Registered Voters | | | | | | |
|------------------------------|-------------------|------------------|------------------|------------------|---------------------|---------------------|----------|
| | Total Approve | Total Disapprove | Strongly Approve | Somewhat Approve | Somewhat Disapprove | Strongly Disapprove | Not Sure |
| October 20-22, 2012 | 45% | 54% | 22% | 23% | 13% | 41% | 1% |
| October 13-15, 2012 | 48% | 50% | 23% | 25% | 10% | 40% | 2% |
| October 6-8, 2012 | 48% | 49% | 31% | 17% | 7% | 42% | 3% |
| September 29-October 1, 2012 | 47% | 53% | 23% | 24% | 10% | 43% | 1% |
| September 22-24, 2012 | 49% | 50% | 26% | 23% | 8% | 42% | 1% |
| September 15-17, 2012 | 49% | 48% | 27% | 22% | 8% | 40% | 3% |
| September 8-10, 2012 | 46% | 53% | 24% | 22% | 11% | 42% | 1% |
| September 1-3, 2012 | 45% | 51% | 18% | 27% | 8% | 43% | 4% |
| August 25-27, 2012 | 43% | 55% | 18% | 25% | 13% | 42% | 2% |
| August 18-20, 2012 | 42% | 55% | 17% | 25% | 10% | 45% | 3% |
| One Year Ago | 42% | 54% | 17% | 25% | 11% | 43% | 4% |

Obama Approval

"Do you approve or disapprove of the way Barack Obama is handling his job as President?"

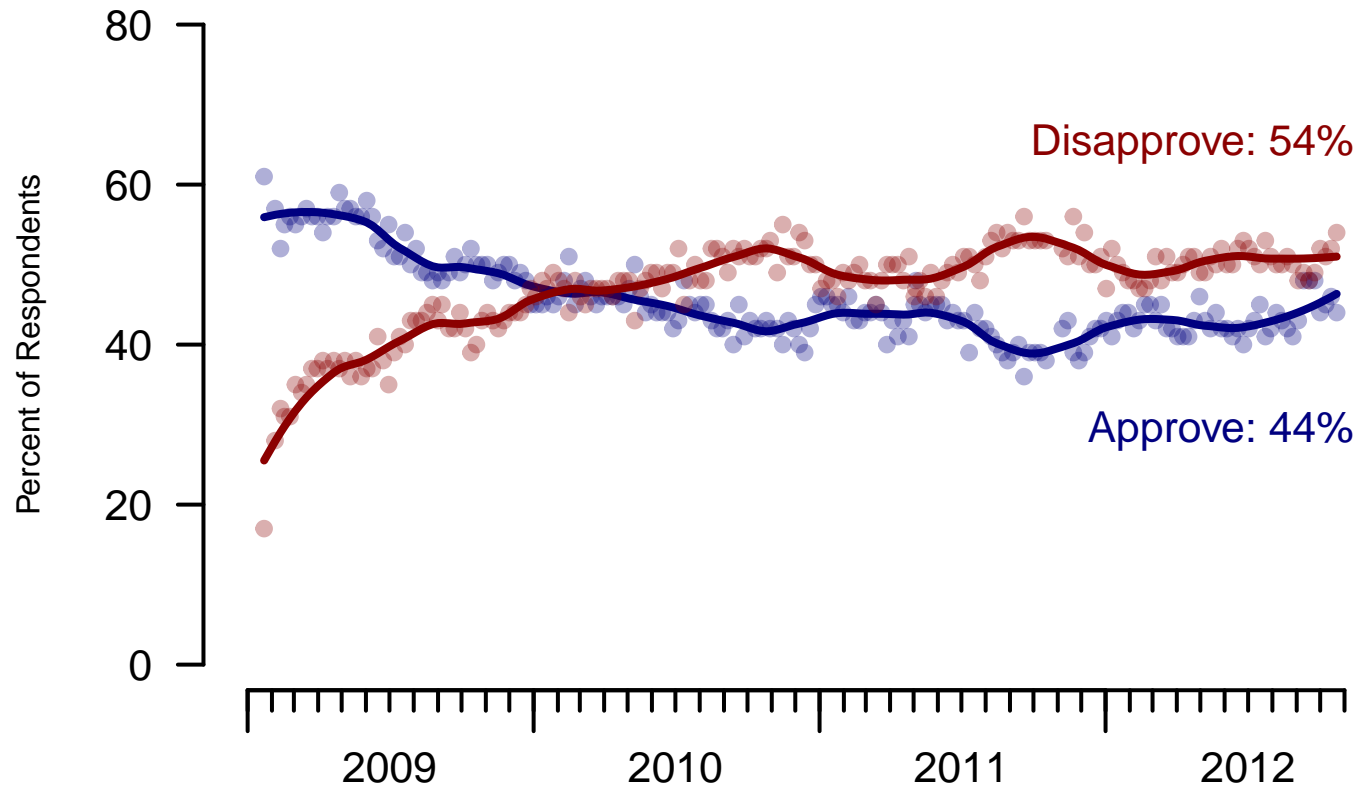


Figure 2: Obama Approval – All Adults

Obama Approval

"Do you approve or disapprove of the way Barack Obama is handling his job as President?"

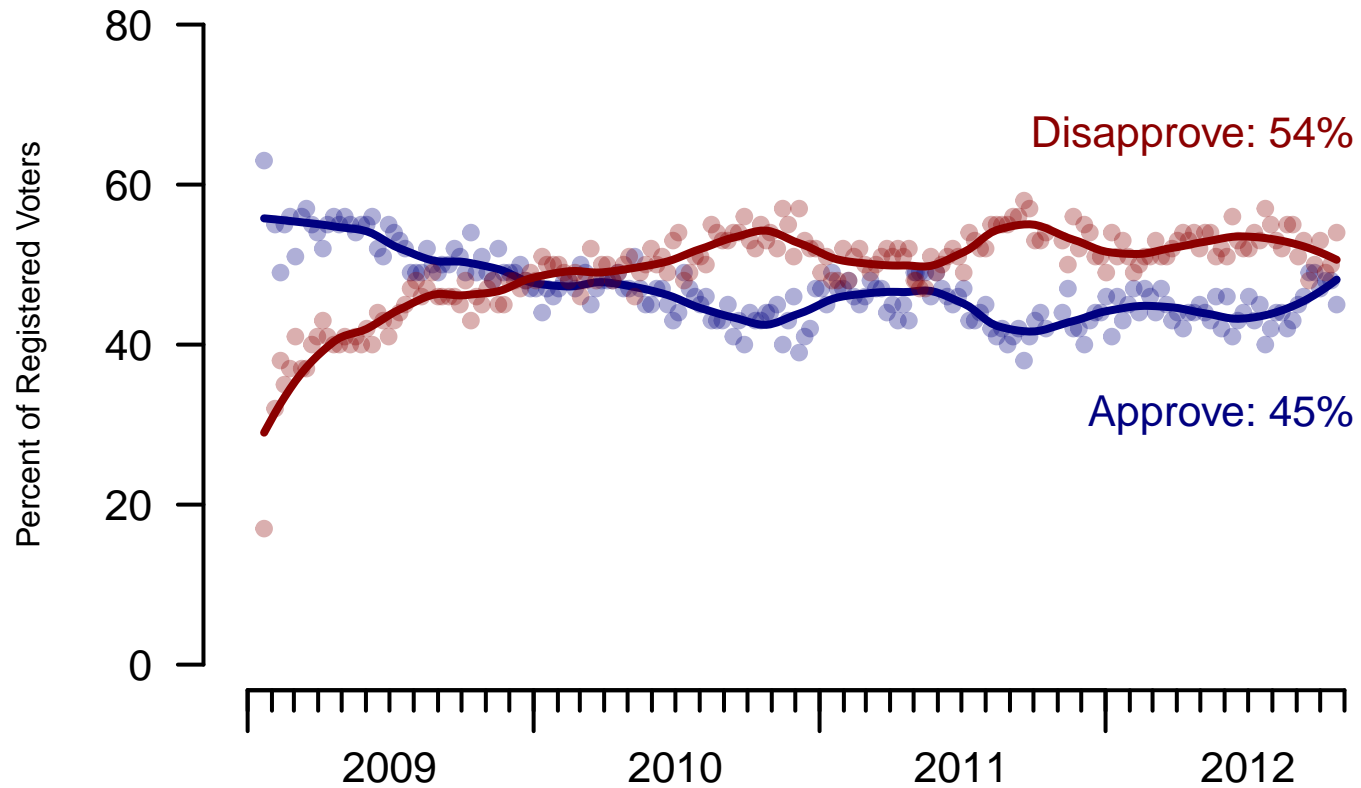


Figure 3: Obama Approval – Registered Voters

4. Approval of Obama as President – This Week – All Adults

Do you approve or disapprove of the way Barack Obama is handling his job as President?

| | Total | Age | | | | Race | | | Gender | | Education | | |
|---------------------|------------|------------|------------|------------|------------|------------|------------|------------|------------|------------|------------|--------------|------------------|
| | | 18-29 | 30-44 | 45-64 | 65+ | White | Black | Hispanic | Male | Female | HS or less | Some college | College graduate |
| Strongly Approve | 21% | 17% | 28% | 22% | 20% | 14% | 53% | 29% | 18% | 25% | 24% | 20% | 20% |
| Somewhat Approve | 23% | 32% | 20% | 26% | 9% | 20% | 34% | 29% | 23% | 24% | 17% | 24% | 33% |
| Somewhat Disapprove | 14% | 18% | 18% | 11% | 10% | 15% | 8% | 18% | 13% | 15% | 14% | 15% | 13% |
| Strongly Disapprove | 40% | 32% | 32% | 42% | 61% | 50% | 5% | 23% | 45% | 35% | 44% | 40% | 34% |
| Not Sure | 1% | 2% | 3% | 0% | – | 1% | 0% | 1% | 1% | 2% | 2% | 1% | 0% |
| Totals (Unweighted) | 100% (999) | 100% (241) | 100% (191) | 100% (422) | 100% (145) | 100% (737) | 100% (152) | 100% (110) | 100% (481) | 100% (518) | 100% (357) | 100% (348) | 100% (294) |

| | Total | Party ID | | | Ideology | | | Region | | | | Family Income | | |
|---------------------|------------|------------|------------|------------|------------|------------|------------|------------|------------|------------|------------|---------------|------------|-----------|
| | | Dem | Rep | Ind | Lib | Mod | Con | North-east | Mid-west | South | West | Under 40 | 40-100 | 100+ |
| Strongly Approve | 21% | 52% | 2% | 9% | 45% | 22% | 5% | 16% | 21% | 24% | 21% | 28% | 20% | 9% |
| Somewhat Approve | 23% | 34% | 6% | 27% | 36% | 38% | 2% | 28% | 27% | 21% | 22% | 23% | 21% | 39% |
| Somewhat Disapprove | 14% | 7% | 14% | 21% | 9% | 15% | 16% | 15% | 12% | 17% | 9% | 13% | 14% | 15% |
| Strongly Disapprove | 40% | 6% | 77% | 42% | 8% | 24% | 76% | 40% | 37% | 37% | 47% | 35% | 44% | 38% |
| Not Sure | 1% | 1% | 0% | 1% | 2% | 1% | 0% | 1% | 3% | 0% | 1% | 2% | 1% | – |
| Totals (Unweighted) | 100% (999) | 100% (380) | 100% (267) | 100% (292) | 100% (260) | 100% (358) | 100% (310) | 100% (158) | 100% (211) | 100% (383) | 100% (247) | 100% (388) | 100% (360) | 100% (76) |

5. Approval of U.S. Congress – Historical

Overall, do you approve or disapprove of the way that the United States Congress is handling its job?

All Adults

| | Total Approve | Total Disapprove | Strongly Approve | Somewhat Approve | Neutral | Somewhat Disapprove | Strongly Disapprove | Not Sure |
|------------------------------|----------------------|-------------------------|------------------|------------------|---------|---------------------|---------------------|----------|
| October 20-22, 2012 | 10% | 65% | 2% | 8% | 19% | 24% | 41% | 6% |
| October 13-15, 2012 | 10% | 68% | 1% | 9% | 16% | 26% | 42% | 6% |
| October 6-8, 2012 | 10% | 68% | 2% | 8% | 16% | 25% | 43% | 6% |
| September 29-October 1, 2012 | 9% | 72% | 2% | 7% | 13% | 27% | 45% | 6% |
| September 22-24, 2012 | 8% | 73% | 2% | 6% | 15% | 27% | 46% | 4% |
| September 15-17, 2012 | 10% | 70% | 2% | 8% | 14% | 26% | 44% | 6% |
| September 8-10, 2012 | 9% | 69% | 3% | 6% | 15% | 26% | 43% | 8% |
| September 1-3, 2012 | 8% | 65% | 1% | 7% | 17% | 23% | 42% | 10% |
| August 25-27, 2012 | 9% | 67% | 1% | 8% | 15% | 23% | 44% | 10% |
| August 18-20, 2012 | 7% | 64% | 0% | 7% | 19% | 24% | 40% | 10% |
| One Year Ago | 7% | 68% | 1% | 6% | 16% | 24% | 44% | 9% |

Registered Voters

| | Total Approve | Total Disapprove | Strongly Approve | Somewhat Approve | Neutral | Somewhat Disapprove | Strongly Disapprove | Not Sure |
|------------------------------|----------------------|-------------------------|------------------|------------------|---------|---------------------|---------------------|----------|
| October 20-22, 2012 | 10% | 71% | 1% | 9% | 15% | 27% | 44% | 5% |
| October 13-15, 2012 | 9% | 72% | 1% | 8% | 14% | 28% | 44% | 5% |
| October 6-8, 2012 | 10% | 71% | 2% | 8% | 15% | 25% | 46% | 3% |
| September 29-October 1, 2012 | 9% | 76% | 2% | 7% | 11% | 27% | 49% | 3% |
| September 22-24, 2012 | 9% | 75% | 2% | 7% | 14% | 28% | 47% | 3% |
| September 15-17, 2012 | 10% | 71% | 2% | 8% | 13% | 26% | 45% | 5% |
| September 8-10, 2012 | 8% | 75% | 2% | 6% | 12% | 27% | 48% | 5% |
| September 1-3, 2012 | 9% | 68% | 1% | 8% | 17% | 22% | 46% | 5% |
| August 25-27, 2012 | 8% | 73% | 1% | 7% | 14% | 23% | 50% | 5% |
| August 18-20, 2012 | 8% | 72% | 1% | 7% | 14% | 26% | 46% | 6% |
| One Year Ago | 8% | 75% | 1% | 7% | 11% | 26% | 49% | 5% |

Congress Approval

"Do you approve of the way the
U.S. Congress is handling its job?"

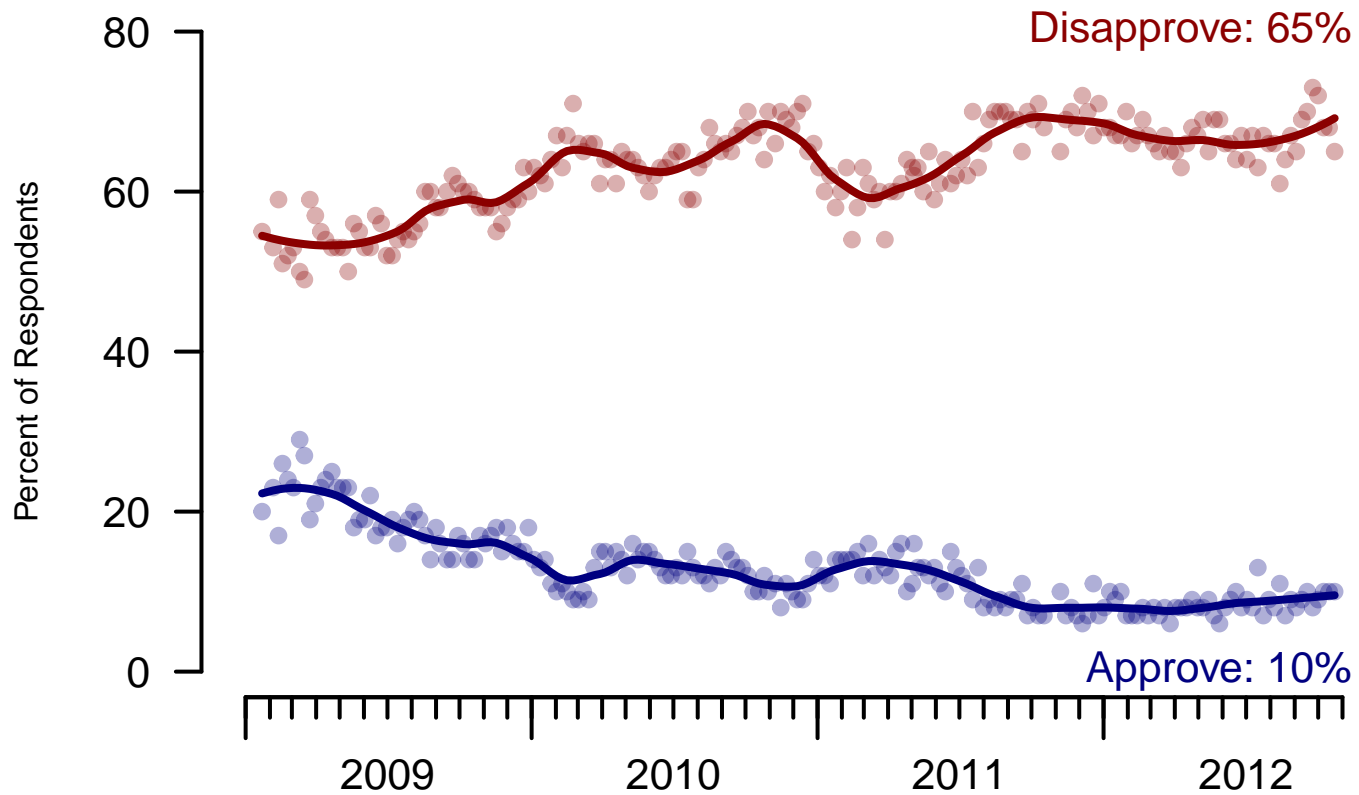


Figure 4: Congress Approval – All Adults

Congress Approval

"Do you approve of the way the
U.S. Congress is handling its job?"

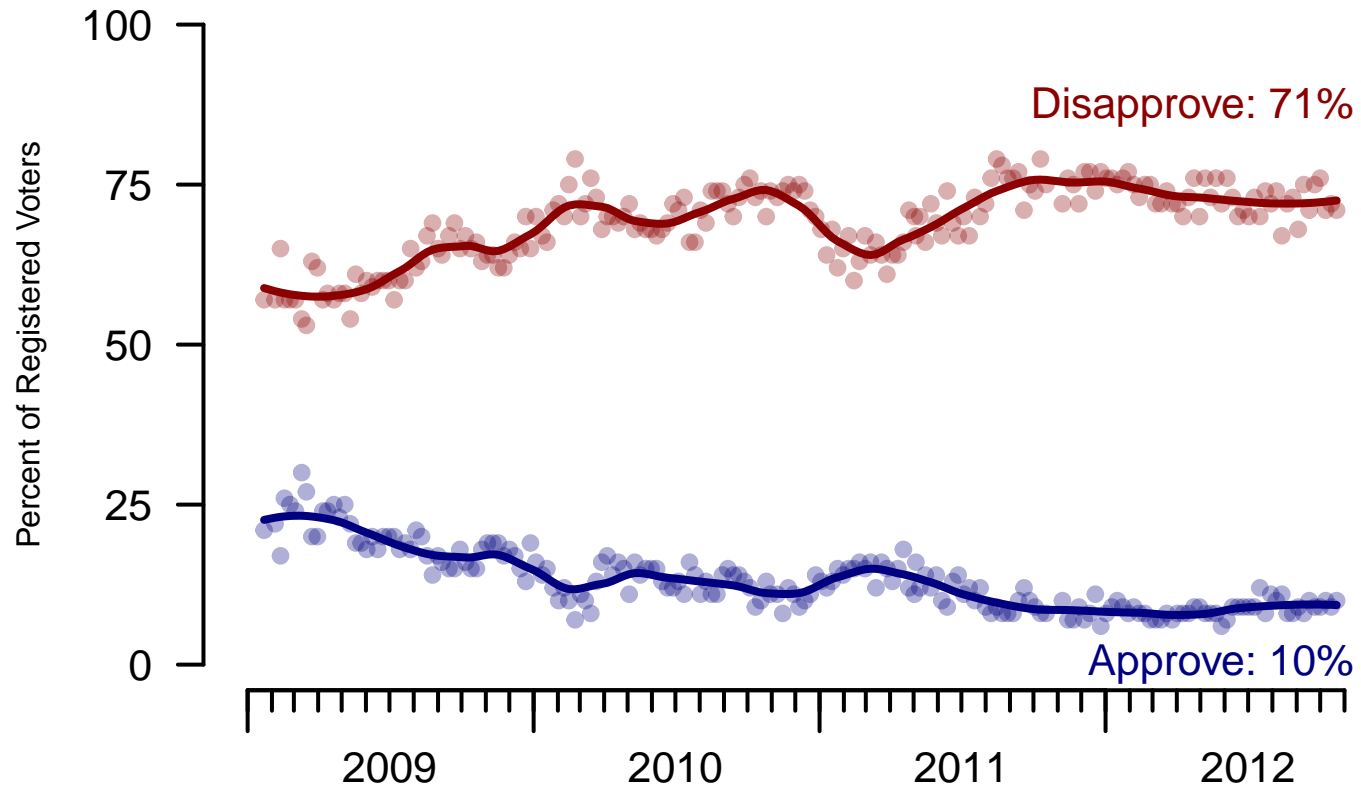


Figure 5: Congress Approval – Registered Voters

6. Approval of U.S. Congress – This Week – All Adults

Overall, do you approve or disapprove of the way that the United States Congress is handling its job?

| | Total | Age | | | | Race | | | Gender | | Education | | |
|--------------------------------|------------|------------|------------|------------|------------|------------|------------|------------|------------|------------|------------|--------------|------------------|
| | | 18-29 | 30-44 | 45-64 | 65+ | White | Black | Hispanic | Male | Female | HS or less | Some college | College graduate |
| Strongly approve | 2% | 2% | 3% | 1% | 0% | 0% | 5% | 6% | 0% | 3% | 2% | 2% | 0% |
| Somewhat approve | 8% | 7% | 9% | 9% | 8% | 8% | 10% | 11% | 6% | 10% | 8% | 8% | 9% |
| Neither approve nor disapprove | 19% | 15% | 24% | 20% | 12% | 16% | 32% | 14% | 13% | 24% | 22% | 22% | 9% |
| Somewhat disapprove | 24% | 28% | 22% | 19% | 33% | 23% | 23% | 32% | 25% | 23% | 23% | 23% | 27% |
| Strongly disapprove | 41% | 35% | 36% | 49% | 42% | 46% | 25% | 34% | 55% | 28% | 38% | 37% | 50% |
| Not sure | 6% | 12% | 7% | 2% | 5% | 7% | 5% | 3% | 1% | 11% | 7% | 7% | 5% |
| Totals (Unweighted) | 100% (999) | 100% (241) | 100% (190) | 100% (423) | 100% (145) | 100% (738) | 100% (152) | 100% (109) | 100% (482) | 100% (517) | 100% (357) | 100% (348) | 100% (294) |

| | Total | Party ID | | | Ideology | | | Region | | | | Family Income | | |
|--------------------------------|------------|------------|------------|------------|------------|------------|------------|------------|------------|------------|------------|---------------|------------|-----------|
| | | Dem | Rep | Ind | Lib | Mod | Con | North-east | Mid-west | South | West | Under 40 | 40-100 | 100+ |
| Strongly approve | 2% | 2% | 2% | 0% | 0% | 2% | 2% | — | 3% | 2% | 1% | 2% | 2% | — |
| Somewhat approve | 8% | 14% | 8% | 3% | 4% | 13% | 8% | 10% | 6% | 6% | 13% | 7% | 10% | 7% |
| Neither approve nor disapprove | 19% | 23% | 19% | 11% | 12% | 17% | 18% | 10% | 18% | 24% | 14% | 25% | 13% | 9% |
| Somewhat disapprove | 24% | 16% | 33% | 24% | 21% | 20% | 31% | 30% | 18% | 25% | 24% | 22% | 24% | 23% |
| Strongly disapprove | 41% | 40% | 30% | 61% | 57% | 46% | 33% | 39% | 50% | 37% | 43% | 37% | 46% | 60% |
| Not sure | 6% | 6% | 8% | 2% | 6% | 2% | 8% | 11% | 5% | 7% | 4% | 8% | 5% | 1% |
| Totals (Unweighted) | 100% (999) | 100% (380) | 100% (267) | 100% (292) | 100% (259) | 100% (358) | 100% (311) | 100% (158) | 100% (211) | 100% (383) | 100% (247) | 100% (388) | 100% (360) | 100% (77) |

7. Direction of country – Historical

Would you say things in this country today are...

| | All Adults | | |
|------------------------------|-------------|-----------------|----------|
| | Right Track | Wrong Direction | Not Sure |
| October 20-22, 2012 | 34% | 57% | 9% |
| October 13-15, 2012 | 33% | 57% | 10% |
| October 6-8, 2012 | 35% | 56% | 9% |
| September 29-October 1, 2012 | 33% | 54% | 13% |
| September 22-24, 2012 | 38% | 53% | 9% |
| September 15-17, 2012 | 34% | 54% | 12% |
| September 8-10, 2012 | 34% | 53% | 13% |
| September 1-3, 2012 | 24% | 59% | 17% |
| August 25-27, 2012 | 28% | 61% | 11% |
| August 18-20, 2012 | 21% | 62% | 17% |
| One Year Ago | 14% | 72% | 14% |

| | Registered Voters | | |
|------------------------------|-------------------|-----------------|----------|
| | Right Track | Wrong Direction | Not Sure |
| October 20-22, 2012 | 35% | 58% | 8% |
| October 13-15, 2012 | 37% | 55% | 8% |
| October 6-8, 2012 | 39% | 54% | 7% |
| September 29-October 1, 2012 | 37% | 53% | 10% |
| September 22-24, 2012 | 39% | 54% | 7% |
| September 15-17, 2012 | 35% | 54% | 11% |
| September 8-10, 2012 | 35% | 56% | 10% |
| September 1-3, 2012 | 28% | 59% | 13% |
| August 25-27, 2012 | 28% | 62% | 9% |
| August 18-20, 2012 | 25% | 61% | 14% |
| One Year Ago | 16% | 72% | 12% |

Direction of Country

"Would you say things in this country today are generally headed in the right direction or off on the wrong track?"

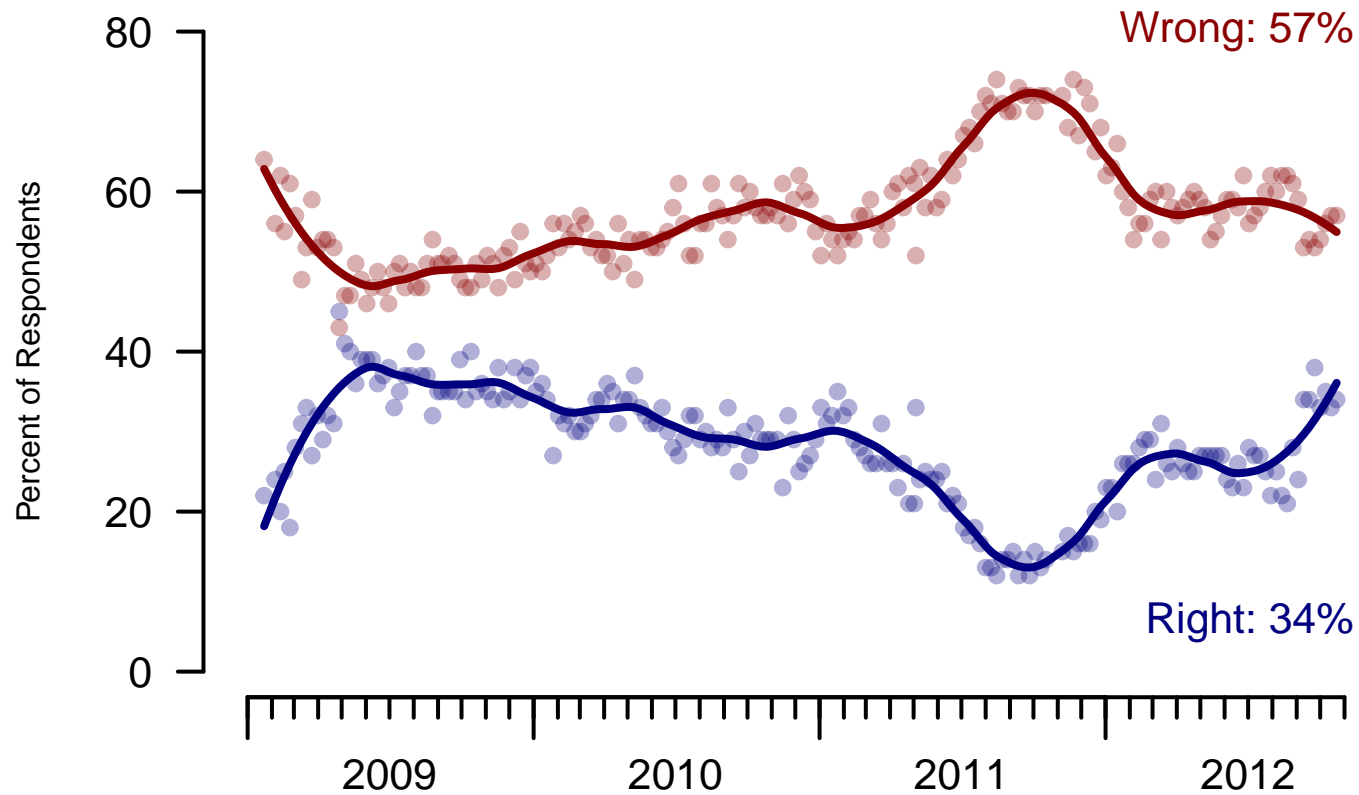


Figure 6: Direction of Country – All Adults

Direction of Country

"Would you say things in this country today are generally headed in the right direction or off on the wrong track?"

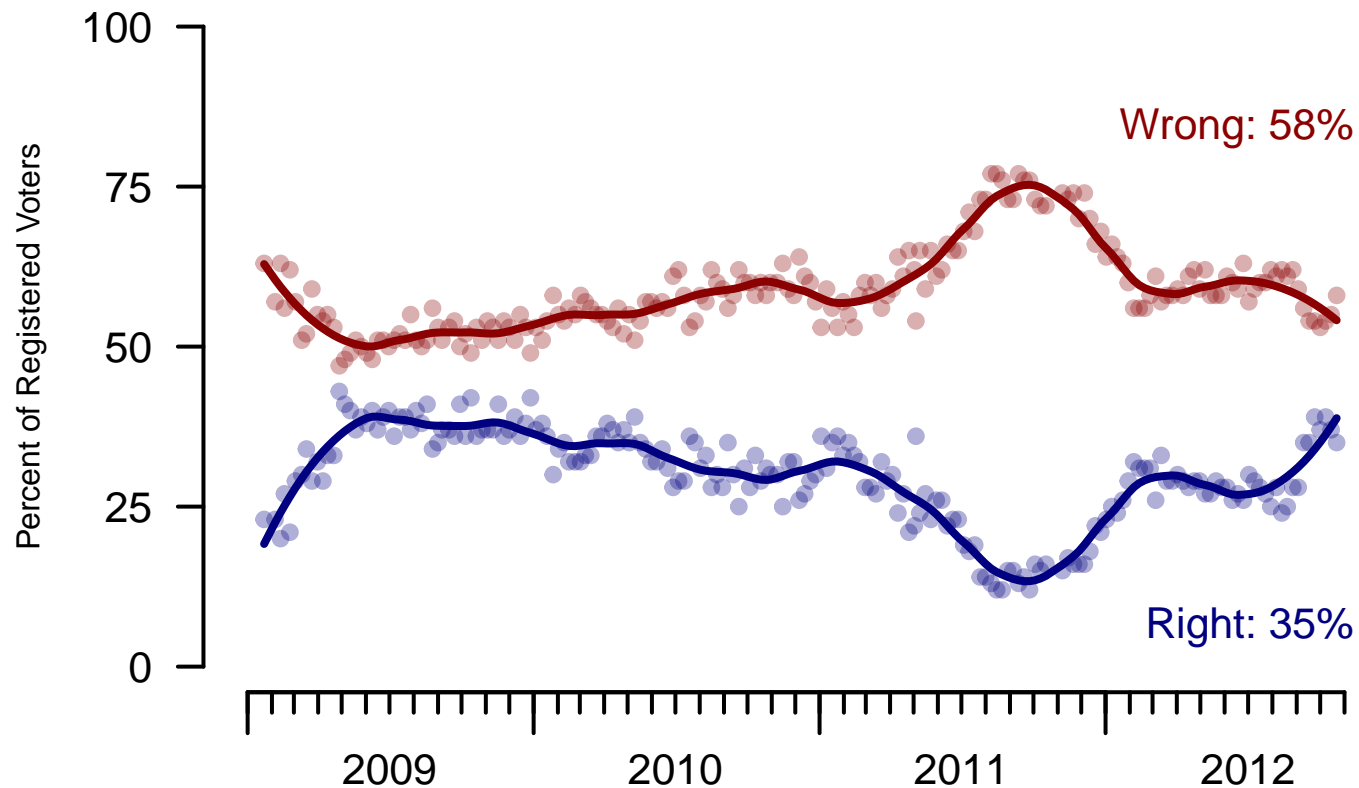


Figure 7: Direction of Country – Registered Voters

8. Direction of Country – This Week – All Adults

Would you say things in this country today are...

| | Age | | | | | Race | | | Gender | | Education | | |
|---|-----------------|---------------|---------------|---------------|---------------|---------------|---------------|---------------|---------------|---------------|---------------|---------------|------------------|
| | Total | 18-29 | 30-44 | 45-64 | 65+ | White | Black | Hispanic | Male | Female | HS or less | Some college | College graduate |
| Generally headed in the right direction | 34% | 27% | 39% | 39% | 27% | 26% | 68% | 39% | 37% | 32% | 35% | 35% | 32% |
| Off on the wrong track | 57% | 57% | 52% | 54% | 72% | 67% | 11% | 55% | 59% | 55% | 60% | 56% | 55% |
| Not sure | 9% | 15% | 9% | 7% | 1% | 6% | 22% | 6% | 5% | 13% | 6% | 9% | 13% |
| Totals (Unweighted) | 100% (1,000) | 100% (241) | 100% (191) | 100% (423) | 100% (145) | 100% (738) | 100% (152) | 100% (110) | 100% (482) | 100% (518) | 100% (357) | 100% (349) | 100% (294) |

| | Party ID | | | Ideology | | | Region | | | | Family Income | | | |
|---|-----------------|---------------|---------------|---------------|---------------|---------------|---------------|---------------|---------------|---------------|---------------|---------------|---------------|--------------|
| | Total | Dem | Rep | Ind | Lib | Mod | Con | North-east | Mid-west | South | West | Under 40 | 40-100 | 100+ |
| Generally headed in the right direction | 34% | 64% | 5% | 32% | 60% | 50% | 6% | 32% | 33% | 37% | 31% | 38% | 35% | 21% |
| Off on the wrong track | 57% | 21% | 91% | 63% | 29% | 40% | 91% | 60% | 59% | 53% | 61% | 48% | 59% | 76% |
| Not sure | 9% | 15% | 5% | 5% | 11% | 10% | 3% | 8% | 8% | 10% | 8% | 14% | 6% | 3% |
| Totals (Unweighted) | 100% (1,000) | 100% (381) | 100% (267) | 100% (292) | 100% (260) | 100% (358) | 100% (311) | 100% (158) | 100% (211) | 100% (383) | 100% (248) | 100% (388) | 100% (360) | 100% (77) |

9. Congressional Vote Intention – Historical

If an election for U.S. Congress were being held today, who would you vote for in the district where you live?

| | Registered Voters | | | | |
|------------------------------|--------------------------------|--------------------------------|-------|----------|------------------|
| | The Democratic Party candidate | The Republican Party candidate | Other | Not sure | I would not vote |
| October 20-22, 2012 | 43% | 41% | 2% | 13% | 2% |
| October 13-15, 2012 | 42% | 40% | 2% | 14% | 2% |
| October 6-8, 2012 | 45% | 39% | 2% | 12% | 1% |
| September 29-October 1, 2012 | 42% | 41% | 2% | 13% | 2% |
| September 22-24, 2012 | 43% | 38% | 3% | 14% | 2% |
| September 15-17, 2012 | 45% | 37% | 1% | 15% | 1% |
| September 8-10, 2012 | 45% | 41% | 3% | 10% | 1% |
| September 1-3, 2012 | 44% | 38% | 2% | 14% | 2% |
| August 25-27, 2012 | 40% | 42% | 2% | 14% | 2% |
| August 18-20, 2012 | 41% | 42% | 3% | 12% | 2% |
| One Year Ago | 41% | 37% | 2% | 17% | 3% |

| | Likely Voters | | | | |
|------------------------------|--------------------------------|--------------------------------|-------|----------|------------------|
| | The Democratic Party candidate | The Republican Party candidate | Other | Not sure | I would not vote |
| October 20-22, 2012 | 44% | 42% | 2% | 12% | 0% |
| October 6-8, 2012 | 45% | 41% | 2% | 11% | 1% |
| September 29-October 1, 2012 | 43% | 42% | 2% | 13% | 0% |

10. Congressional Vote Intention – This Week – Likely Voters

If an election for U.S. Congress were being held today, who would you vote for in the district where you live?

| | Total | Age | | | | Race | | | Gender | | Education | | |
|--------------------------------|-------|-------|-------|-------|-------|-------|-------|----------|--------|--------|------------|--------------|------------------|
| | | 18-29 | 30-44 | 45-64 | 65+ | White | Black | Hispanic | Male | Female | HS or less | Some college | College graduate |
| The Democratic Party candidate | 44% | 49% | 43% | 45% | 32% | 33% | 88% | 56% | 42% | 46% | 42% | 40% | 49% |
| The Republican Party candidate | 42% | 39% | 37% | 41% | 56% | 50% | 9% | 36% | 43% | 42% | 42% | 49% | 37% |
| Other | 2% | 0% | 5% | 2% | 1% | 2% | 0% | 1% | 2% | 1% | 1% | 3% | 1% |
| Not sure | 12% | 11% | 14% | 11% | 12% | 15% | 3% | 6% | 13% | 11% | 15% | 9% | 12% |
| I would not vote | 0% | 0% | 1% | 0% | – | 0% | – | 0% | 1% | 0% | 0% | 0% | 1% |
| Totals | (826) | (173) | (148) | (367) | (138) | (616) | (123) | (87) | (425) | (401) | (265) | (290) | (271) |

| | Total | Party ID | | | Ideology | | | Region | | | | Family Income | | |
|--------------------------------|-------|----------|-------|-------|----------|-------|-------|------------|----------|-------|-------|---------------|--------|------|
| | | Dem | Rep | Ind | Lib | Mod | Con | North-east | Mid-west | South | West | Under 40 | 40-100 | 100+ |
| The Democratic Party candidate | 44% | 92% | 3% | 34% | 86% | 57% | 6% | 49% | 47% | 42% | 40% | 52% | 40% | 40% |
| The Republican Party candidate | 42% | 1% | 88% | 41% | 5% | 24% | 83% | 27% | 46% | 45% | 45% | 30% | 49% | 51% |
| Other | 2% | 1% | 1% | 3% | 3% | 1% | 1% | 2% | 0% | 2% | 2% | 2% | 1% | 1% |
| Not sure | 12% | 5% | 9% | 22% | 5% | 18% | 9% | 21% | 7% | 11% | 13% | 15% | 10% | 8% |
| I would not vote | 0% | 0% | – | 0% | 1% | – | 0% | 0% | – | 1% | – | 1% | 0% | – |
| Totals | (826) | (326) | (239) | (239) | (227) | (307) | (265) | (135) | (169) | (304) | (218) | (286) | (317) | (74) |

If an election for U.S. Congress were being held today, who would you vote for in the district where you live?

(Likely voters only)

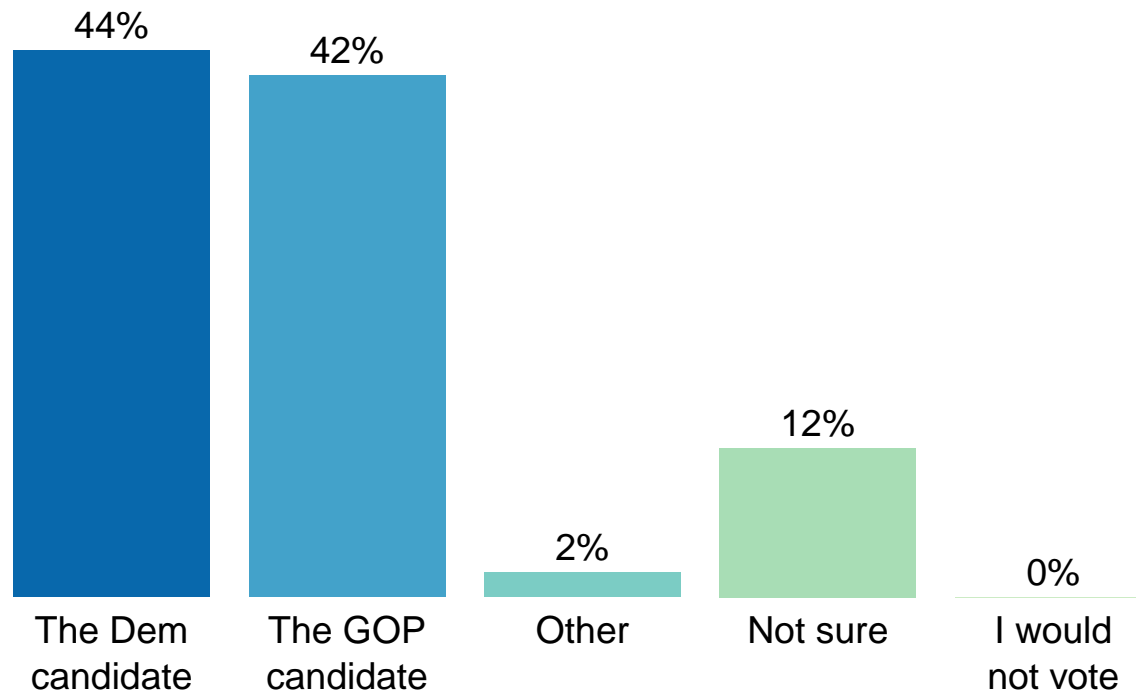


Figure 8: Congressional Vote Intention – Likely Voters

| | |
|--|---|
| Sponsorship | <i>The Economist</i> |
| Fieldwork | YouGov |
| Interviewing Dates | October 20-22, 2012 |
| Target population | U.S. citizens, aged 18 and over. |
| Sampling method | Respondents were selected from YouGov's panel using sample matching. A random sample (stratified by age, gender, race, education, and region) was selected from the 2005–2007 American Community Study. Voter registration, turnout, religion, news interest, minor party identification, and non-placement on an ideology scale, were imputed from the 2008 Current Population Survey Registration and Voting Supplement and the Pew Religion in American Life Survey. Matching respondents were selected from the YouGov panel, an opt-in Internet panel. |
| Weighting | The sample was weighted using propensity scores based on age, gender, race, education, news interest, voter registration, and non-placement on an ideology scale. The weights range from 0.02 to 8.51, with a mean of one and a standard deviation of 1.2. |
| Number of respondents | 1,000 |
| Margin of error | ± 4.9% (adjusted for weighting) |
| Margin of error (Registered Voters) | ± 5.2% (adjusted for weighting) |
| Survey mode | Web-based interviews |
| Full results | Available online at http://today.yougov.com/news/categories/economist/ . |