

Interviewing: September 29-October 1, 2012  
Sample: 1000 Adults nationwide online  
785 registered voters nationwide online



806 D Street, SE  
Washington, DC 20003

Contact:  
Thomas Riehle  
Ph: (202) 544-2550

# *The Economist/YouGov* Poll

## Weekly Tracking

For immediate release

**1. Presidential Vote Preference – Historical**

Who will you vote for in the 2012 Presidential election?

	Registered Voters			
	Barack Obama	Mitt Romney	Other	Not sure
September 29-October 1, 2012	49%	41%	6%	3%
September 22-24, 2012	48%	43%	6%	3%
September 15-17, 2012	49%	44%	3%	3%
September 8-10, 2012	49%	45%	4%	2%
September 1-3, 2012	47%	46%	3%	4%
August 25-27, 2012	46%	47%	4%	4%
August 18-20, 2012	45%	45%	4%	5%
August 11-13, 2012	47%	44%	3%	6%
August 4-6, 2012	46%	45%	4%	4%
July 28-30, 2012	44%	46%	6%	4%
One Year Ago	45%	43%	6%	6%

	Likely Voters			
	Barack Obama	Mitt Romney	Other	Not sure
September 29-October 1, 2012	49%	44%	5%	2%

**2. Presidential Vote Preference – This Week – Likely Voters**

Presidential Vote Preference: Obama vs. Romney

	Total	Age				Race			Gender		Education		
		18-29	30-44	45-64	65+	White	Black	Hispanic	Male	Female	HS or less	Some college	College graduate
Barack Obama	49%	57%	54%	48%	36%	38%	92%	60%	44%	54%	46%	51%	51%
Mitt Romney	44%	40%	33%	46%	58%	53%	8%	36%	47%	41%	45%	44%	43%
Other	5%	3%	7%	4%	4%	6%	0%	0%	6%	3%	5%	3%	5%
Not sure	2%	0%	5%	2%	2%	3%	0%	4%	3%	2%	4%	2%	1%
Totals (Unweighted)	100% (742)	100% (76)	100% (156)	100% (383)	100% (127)	100% (543)	100% (122)	100% (77)	100% (384)	100% (358)	100% (236)	100% (277)	100% (229)

	Total	Party ID			Ideology			Region				Family Income		
		Dem	Rep	Ind	Lib	Mod	Con	North-east	Mid-west	South	West	Under 40	40-100	100+
Barack Obama	49%	94%	5%	50%	95%	71%	8%	45%	43%	51%	56%	54%	44%	46%
Mitt Romney	44%	3%	88%	37%	4%	23%	82%	49%	52%	40%	39%	34%	51%	51%
Other	5%	1%	6%	7%	0%	4%	6%	6%	4%	4%	4%	9%	2%	1%
Not sure	2%	2%	1%	5%	0%	1%	4%	1%	1%	5%	1%	3%	3%	2%
Totals (Unweighted)	100% (742)	100% (296)	100% (220)	100% (210)	100% (177)	100% (261)	100% (275)	100% (127)	100% (166)	100% (276)	100% (173)	100% (238)	100% (318)	100% (63)

## Who will you vote for in the 2012 Presidential election?

(Likely voters only)

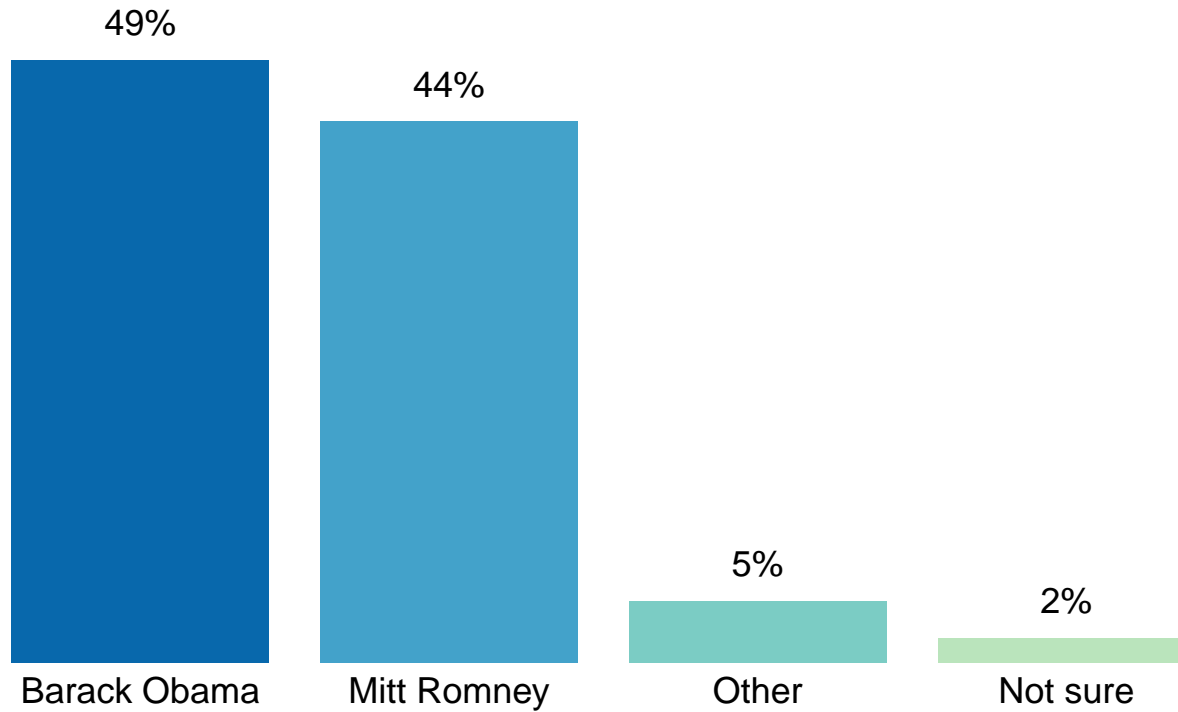


Figure 1: Presidential Vote Preference – Likely Voters

**3. Approval of Obama as President – Historical**

Do you approve or disapprove of the way Barack Obama is handling his job as President?

	All Adults						
	Total Approve	Total Disapprove	Strongly Approve	Somewhat Approve	Somewhat Disapprove	Strongly Disapprove	Not Sure
September 29-October 1, 2012	44%	52%	19%	25%	11%	41%	3%
September 22-24, 2012	48%	49%	25%	23%	9%	40%	2%
September 15-17, 2012	48%	48%	26%	22%	9%	39%	4%
September 8-10, 2012	48%	49%	24%	24%	11%	38%	4%
September 1-3, 2012	43%	48%	17%	26%	9%	39%	9%
August 25-27, 2012	41%	50%	17%	24%	14%	36%	9%
August 18-20, 2012	42%	51%	15%	27%	10%	41%	7%
August 11-13, 2012	43%	50%	15%	28%	12%	38%	7%
August 4-6, 2012	44%	50%	17%	27%	11%	39%	6%
July 28-30, 2012	42%	51%	19%	23%	16%	35%	7%
One Year Ago	39%	53%	14%	25%	17%	36%	8%

	Registered Voters						
	Total Approve	Total Disapprove	Strongly Approve	Somewhat Approve	Somewhat Disapprove	Strongly Disapprove	Not Sure
September 29-October 1, 2012	47%	53%	23%	24%	10%	43%	1%
September 22-24, 2012	49%	50%	26%	23%	8%	42%	1%
September 15-17, 2012	49%	48%	27%	22%	8%	40%	3%
September 8-10, 2012	46%	53%	24%	22%	11%	42%	1%
September 1-3, 2012	45%	51%	18%	27%	8%	43%	4%
August 25-27, 2012	43%	55%	18%	25%	13%	42%	2%
August 18-20, 2012	42%	55%	17%	25%	10%	45%	3%
August 11-13, 2012	44%	52%	18%	26%	11%	41%	5%
August 4-6, 2012	44%	53%	19%	25%	9%	44%	4%
July 28-30, 2012	42%	55%	20%	22%	13%	42%	3%
One Year Ago	43%	53%	17%	26%	14%	39%	4%

## Obama Approval

"Do you approve or disapprove of the way Barack Obama is handling his job as President?"

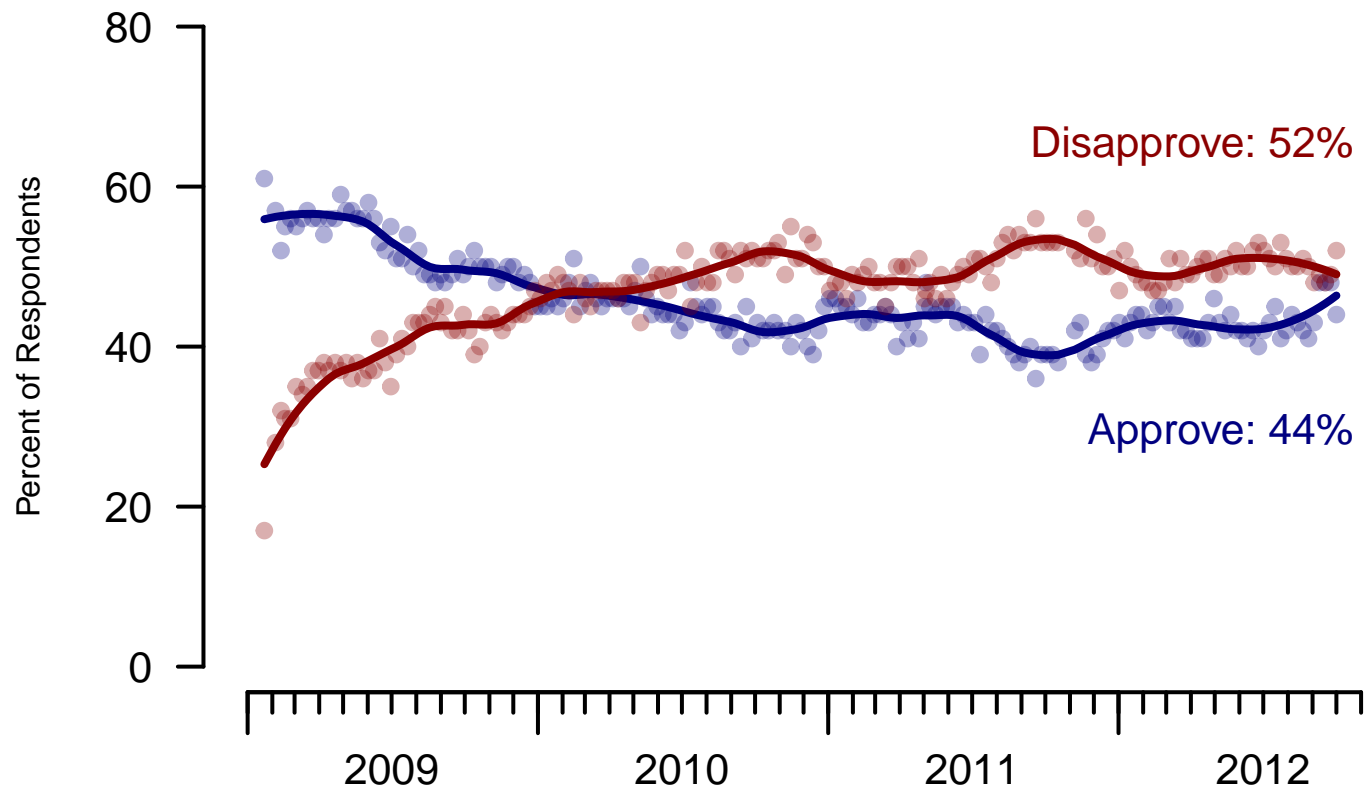


Figure 2: Obama Approval – All Adults

## Obama Approval

"Do you approve or disapprove of the way Barack Obama is handling his job as President?"

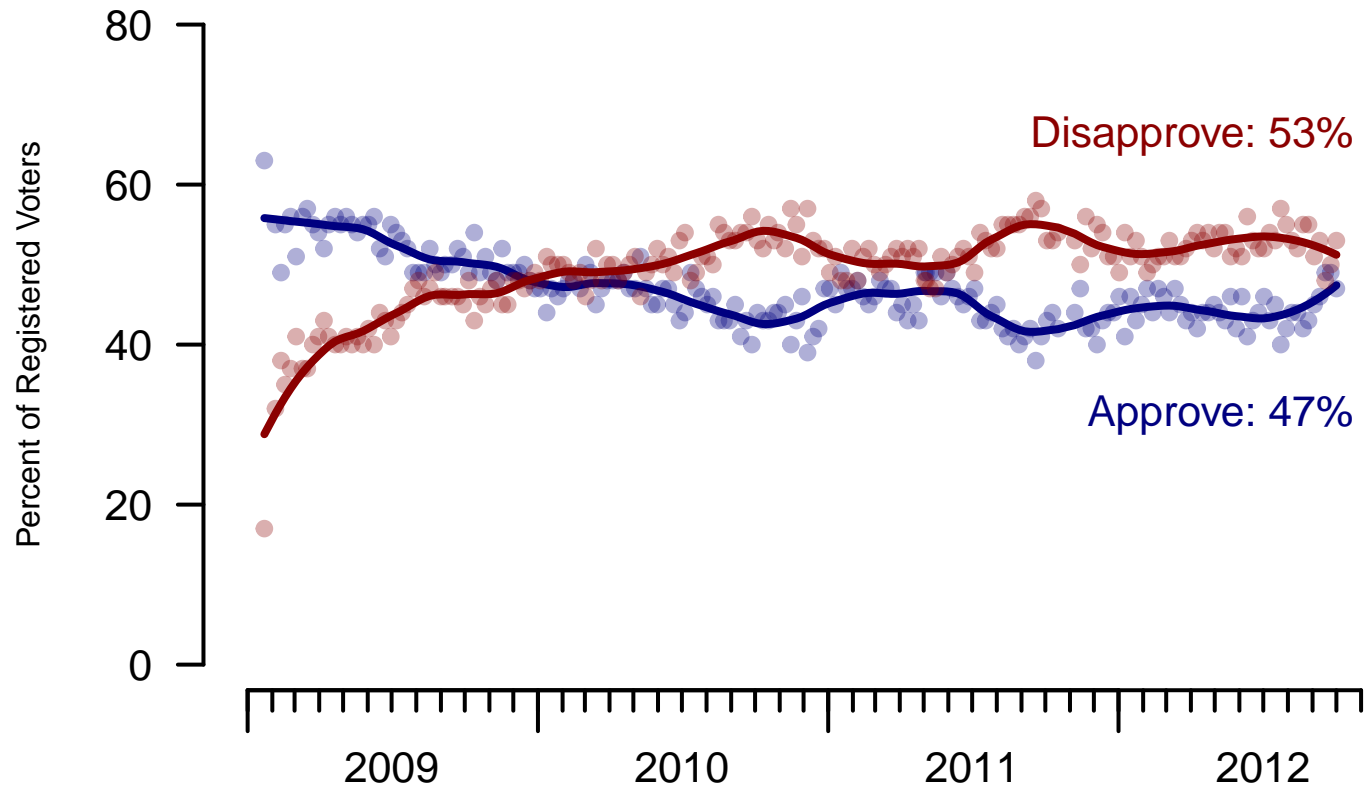


Figure 3: Obama Approval – Registered Voters

**4. Approval of Obama as President – This Week**

Do you approve or disapprove of the way Barack Obama is handling his job as President?

	Total	Age				Race			Gender		Education		
		18-29	30-44	45-64	65+	White	Black	Hispanic	Male	Female	HS or less	Some college	College graduate
Strongly Approve	19%	21%	18%	19%	21%	11%	54%	29%	17%	21%	20%	21%	17%
Somewhat Approve	25%	33%	28%	22%	12%	21%	35%	33%	26%	24%	22%	24%	30%
Somewhat Disapprove	11%	16%	9%	11%	9%	13%	3%	13%	10%	12%	10%	10%	14%
Strongly Disapprove	41%	25%	40%	46%	56%	52%	5%	21%	44%	38%	44%	42%	35%
Not Sure	3%	6%	5%	2%	1%	3%	3%	4%	3%	4%	4%	3%	4%
Totals (Unweighted)	100% (997)	100% (161)	100% (227)	100% (469)	100% (140)	100% (735)	100% (157)	100% (105)	100% (472)	100% (525)	100% (358)	100% (371)	100% (268)

	Total	Party ID			Ideology			Region				Family Income		
		Dem	Rep	Ind	Lib	Mod	Con	North-east	Mid-west	South	West	Under 40	40-100	100+
Strongly Approve	19%	47%	2%	10%	42%	23%	3%	16%	13%	24%	20%	21%	19%	21%
Somewhat Approve	25%	42%	4%	30%	46%	36%	6%	33%	26%	19%	27%	23%	23%	31%
Somewhat Disapprove	11%	6%	12%	14%	5%	16%	10%	10%	11%	14%	8%	11%	14%	3%
Strongly Disapprove	41%	5%	81%	43%	5%	23%	81%	36%	44%	41%	44%	40%	42%	44%
Not Sure	3%	1%	1%	3%	1%	2%	0%	5%	6%	2%	2%	4%	2%	0%
Totals (Unweighted)	100% (997)	100% (380)	100% (254)	100% (290)	100% (226)	100% (358)	100% (323)	100% (178)	100% (228)	100% (370)	100% (221)	100% (378)	100% (382)	100% (72)

**5. Approval of U.S. Congress – Historical**

Overall, do you approve or disapprove of the way that the United States Congress is handling its job?

All Adults

	<b>Total Approve</b>	<b>Total Disapprove</b>	Strongly Approve	Somewhat Approve	Neutral	Somewhat Disapprove	Strongly Disapprove	Not Sure
September 29-October 1, 2012	9%	72%	2%	7%	13%	27%	45%	6%
September 22-24, 2012	8%	73%	2%	6%	15%	27%	46%	4%
September 15-17, 2012	10%	70%	2%	8%	14%	26%	44%	6%
September 8-10, 2012	9%	69%	3%	6%	15%	26%	43%	8%
September 1-3, 2012	8%	65%	1%	7%	17%	23%	42%	10%
August 25-27, 2012	9%	67%	1%	8%	15%	23%	44%	10%
August 18-20, 2012	7%	64%	0%	7%	19%	24%	40%	10%
August 11-13, 2012	11%	61%	2%	9%	19%	22%	39%	10%
August 4-6, 2012	8%	66%	1%	7%	17%	22%	44%	9%
July 28-30, 2012	9%	66%	2%	7%	17%	27%	39%	8%
One Year Ago	8%	69%	1%	7%	16%	24%	45%	8%

Registered Voters

	<b>Total Approve</b>	<b>Total Disapprove</b>	Strongly Approve	Somewhat Approve	Neutral	Somewhat Disapprove	Strongly Disapprove	Not Sure
September 29-October 1, 2012	9%	76%	2%	7%	11%	27%	49%	3%
September 22-24, 2012	9%	75%	2%	7%	14%	28%	47%	3%
September 15-17, 2012	10%	71%	2%	8%	13%	26%	45%	5%
September 8-10, 2012	8%	75%	2%	6%	12%	27%	48%	5%
September 1-3, 2012	9%	68%	1%	8%	17%	22%	46%	5%
August 25-27, 2012	8%	73%	1%	7%	14%	23%	50%	5%
August 18-20, 2012	8%	72%	1%	7%	14%	26%	46%	6%
August 11-13, 2012	11%	67%	1%	10%	15%	24%	43%	7%
August 4-6, 2012	10%	74%	2%	8%	12%	23%	51%	5%
July 28-30, 2012	11%	72%	2%	9%	13%	29%	43%	5%
One Year Ago	9%	74%	1%	8%	12%	23%	51%	4%

### Congress Approval

"Do you approve of the way the U.S. Congress is handling its job?"

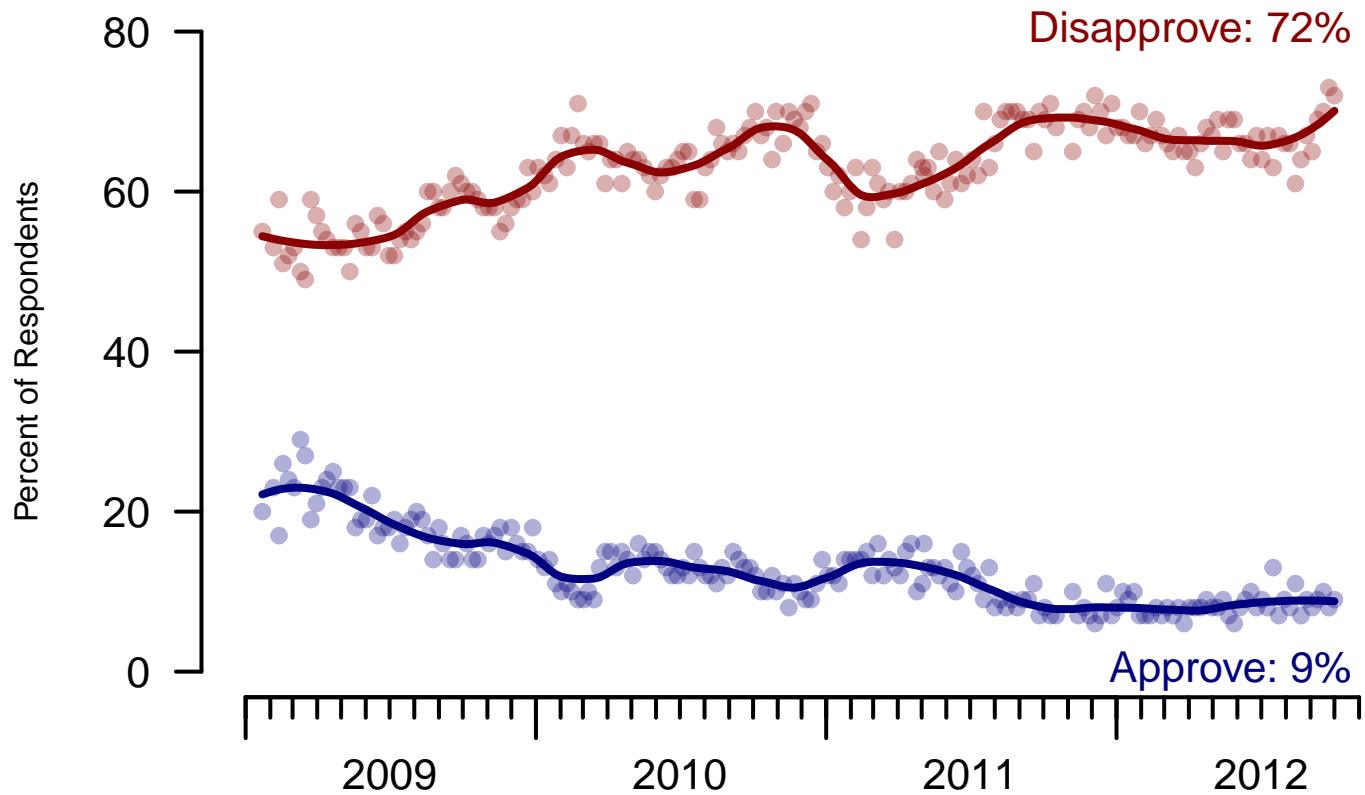


Figure 4: Congress Approval – All Adults

### Congress Approval

"Do you approve of the way the  
U.S. Congress is handling its job?"

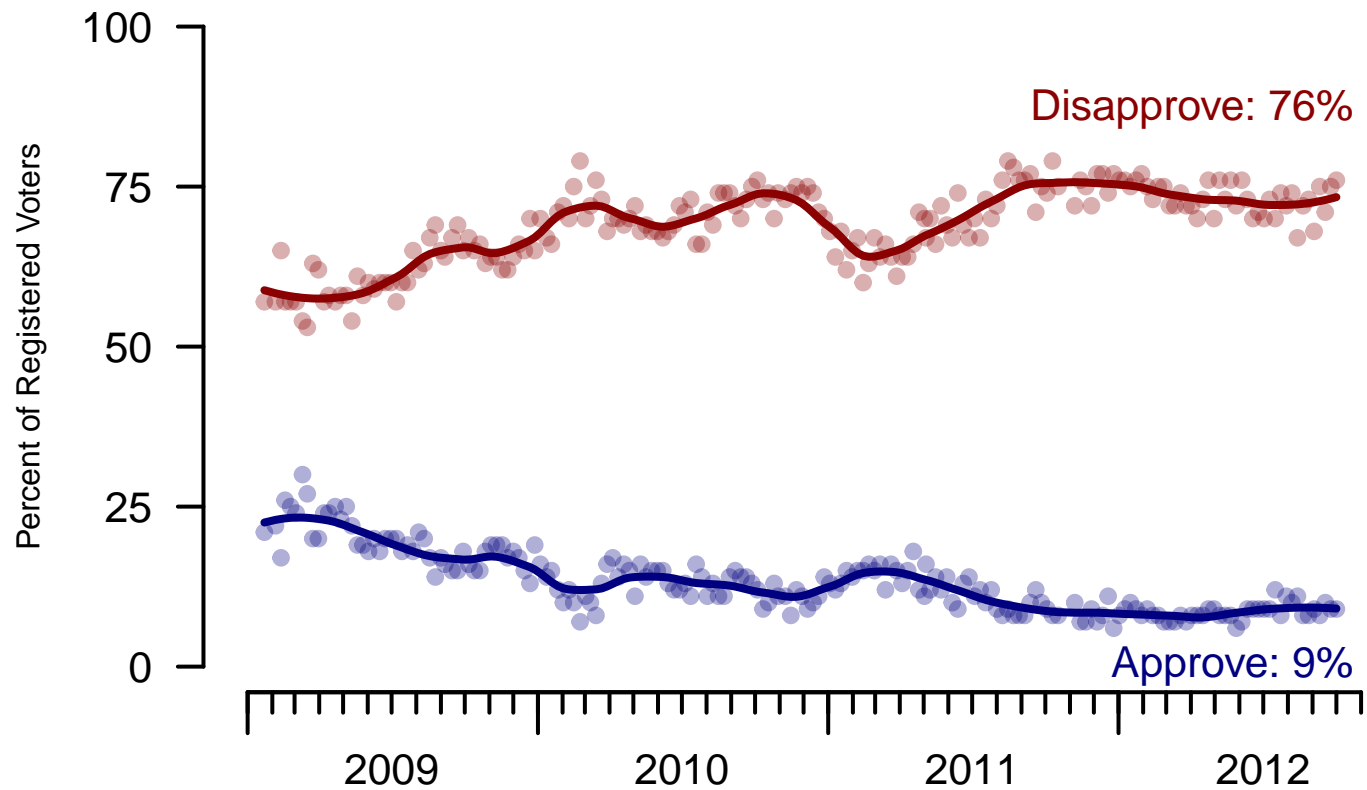


Figure 5: Congress Approval – Registered Voters

**6. Approval of U.S. Congress – This Week**

Overall, do you approve or disapprove of the way that the United States Congress is handling its job?

	Age					Race			Gender		Education		
	Total	18-29	30-44	45-64	65+	White	Black	Hispanic	Male	Female	HS or less	Some college	College graduate
Strongly approve	2%	2%	1%	2%	3%	1%	3%	3%	1%	3%	2%	2%	1%
Somewhat approve	7%	11%	4%	7%	5%	5%	12%	11%	6%	8%	5%	9%	7%
Neither approve nor disapprove	13%	12%	22%	10%	8%	12%	19%	16%	12%	15%	15%	14%	10%
Somewhat disapprove	27%	32%	25%	26%	25%	30%	10%	28%	25%	28%	26%	27%	29%
Strongly disapprove	45%	33%	41%	50%	60%	47%	47%	34%	54%	37%	45%	42%	49%
Not sure	6%	10%	6%	6%	0%	5%	10%	7%	2%	9%	7%	6%	5%
Totals (Unweighted)	100% (1,000)	100% (161)	100% (227)	100% (471)	100% (141)	100% (738)	100% (157)	100% (105)	100% (474)	100% (526)	100% (359)	100% (371)	100% (270)

	Party ID			Ideology			Region				Family Income			
	Total	Dem	Rep	Ind	Lib	Mod	Con	North-east	Mid-west	South	West	Under 40	40-100	100+
Strongly approve	2%	4%	1%	1%	2%	1%	2%	3%	1%	1%	3%	2%	2%	2%
Somewhat approve	7%	8%	7%	6%	8%	5%	8%	1%	5%	7%	13%	10%	6%	7%
Neither approve nor disapprove	13%	14%	15%	11%	7%	18%	12%	17%	16%	12%	9%	12%	16%	10%
Somewhat disapprove	27%	20%	40%	20%	23%	19%	38%	30%	30%	23%	29%	29%	29%	22%
Strongly disapprove	45%	49%	34%	58%	54%	51%	38%	44%	42%	51%	38%	40%	44%	57%
Not sure	6%	6%	4%	4%	6%	6%	2%	4%	6%	6%	8%	7%	4%	2%
Totals (Unweighted)	100% (1,000)	100% (382)	100% (255)	100% (290)	100% (227)	100% (359)	100% (324)	100% (179)	100% (229)	100% (371)	100% (221)	100% (379)	100% (384)	100% (72)

**7. Direction of country – Historical**

Would you say things in this country today are...

	All Adults		
	Right Track	Wrong Direction	Not Sure
September 29-October 1, 2012	33%	54%	13%
September 22-24, 2012	38%	53%	9%
September 15-17, 2012	34%	54%	12%
September 8-10, 2012	34%	53%	13%
September 1-3, 2012	24%	59%	17%
August 25-27, 2012	28%	61%	11%
August 18-20, 2012	21%	62%	17%
August 11-13, 2012	22%	62%	17%
August 4-6, 2012	25%	60%	15%
July 28-30, 2012	22%	62%	16%
One Year Ago	15%	70%	14%

	Registered Voters		
	Right Track	Wrong Direction	Not Sure
September 29-October 1, 2012	37%	53%	10%
September 22-24, 2012	39%	54%	7%
September 15-17, 2012	35%	54%	11%
September 8-10, 2012	35%	56%	10%
September 1-3, 2012	28%	59%	13%
August 25-27, 2012	28%	62%	9%
August 18-20, 2012	25%	61%	14%
August 11-13, 2012	24%	62%	14%
August 4-6, 2012	28%	61%	11%
July 28-30, 2012	25%	62%	13%
One Year Ago	16%	73%	10%

## Direction of Country

"Would you say things in this country today are generally headed in the right direction or off on the wrong track?"

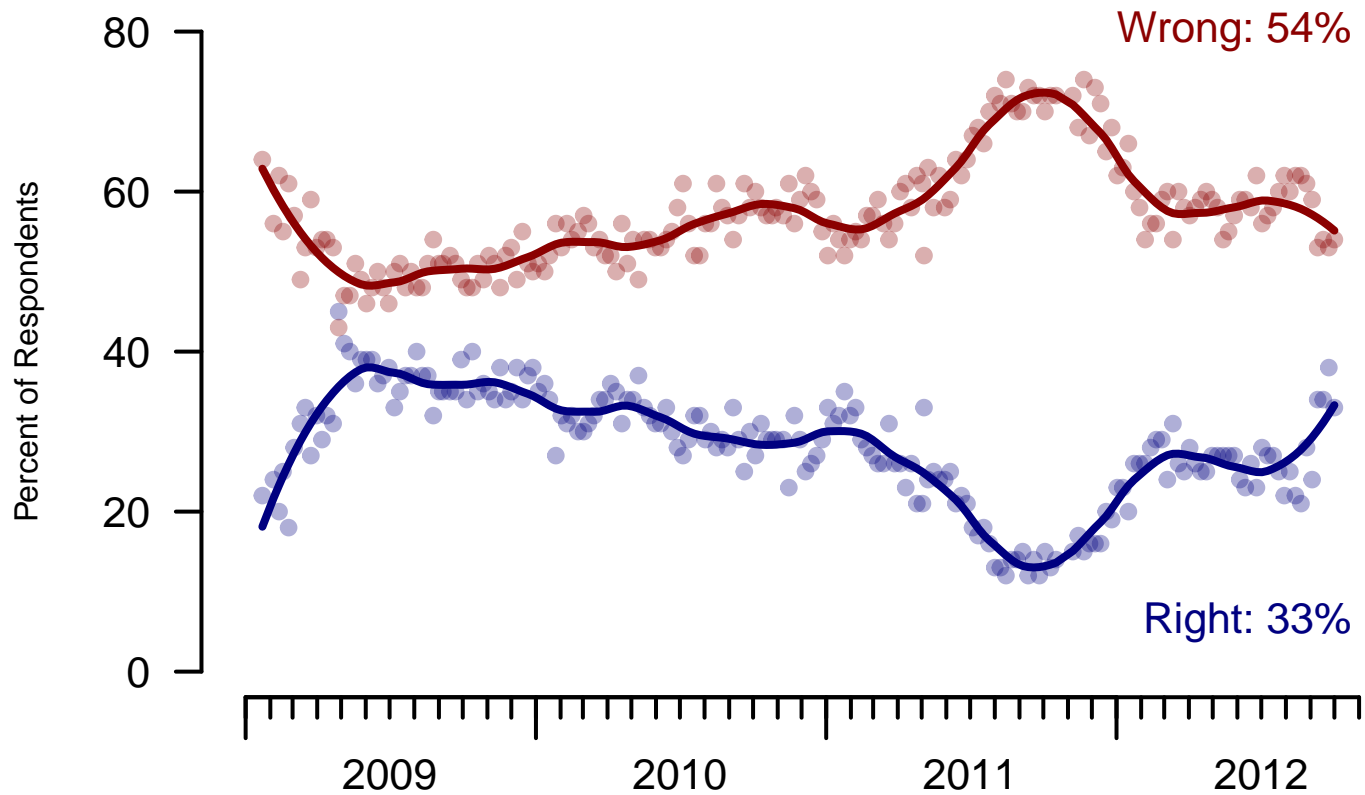


Figure 6: Direction of Country – All Adults

## Direction of Country

"Would you say things in this country today are generally headed in the right direction or off on the wrong track?"

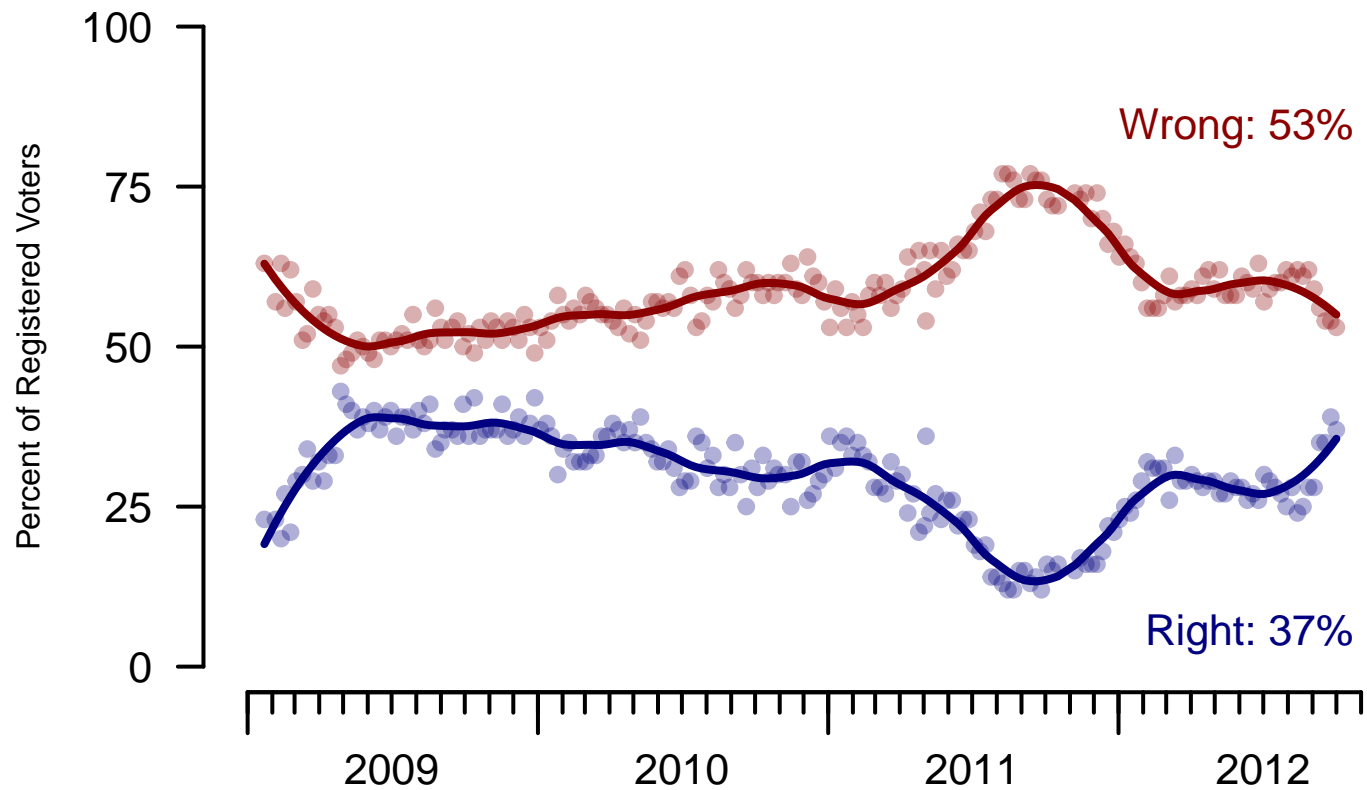


Figure 7: Direction of Country – Registered Voters

**8. Direction of Country – This Week**

Would you say things in this country today are...

	Total	Age				Race			Gender		Education		
		18-29	30-44	45-64	65+	White	Black	Hispanic	Male	Female	HS or less	Some college	College graduate
Generally headed in the right direction	33%	40%	35%	30%	28%	23%	72%	50%	34%	32%	30%	35%	36%
Off on the wrong track	54%	42%	51%	58%	64%	65%	9%	39%	55%	53%	58%	51%	52%
Not sure	13%	17%	13%	12%	8%	12%	19%	10%	10%	15%	13%	14%	12%
Totals (Unweighted)	100% (999)	100% (161)	100% (227)	100% (470)	100% (141)	100% (738)	100% (157)	100% (104)	100% (473)	100% (526)	100% (359)	100% (370)	100% (270)

	Total	Party ID			Ideology			Region				Family Income		
		Dem	Rep	Ind	Lib	Mod	Con	North-east	Mid-west	South	West	Under 40	40-100	100+
Generally headed in the right direction	33%	69%	3%	29%	66%	45%	6%	30%	28%	34%	40%	34%	33%	35%
Off on the wrong track	54%	19%	90%	55%	17%	39%	89%	56%	58%	56%	43%	51%	58%	51%
Not sure	13%	12%	7%	16%	16%	15%	4%	13%	14%	10%	18%	15%	9%	15%
Totals (Unweighted)	100% (999)	100% (382)	100% (255)	100% (289)	100% (227)	100% (358)	100% (324)	100% (178)	100% (229)	100% (371)	100% (221)	100% (379)	100% (383)	100% (72)

**9. Congressional Vote Intention – Historical**

If an election for U.S. Congress were being held today, who would you vote for in the district where you live?

	Registered Voters				
	The Democratic Party candidate	The Republican Party candidate	Other	Not sure	I would not vote
September 29-October 1, 2012	42%	41%	2%	13%	2%
September 22-24, 2012	43%	38%	3%	14%	2%
September 15-17, 2012	45%	37%	1%	15%	1%
September 8-10, 2012	45%	41%	3%	10%	1%
September 1-3, 2012	44%	38%	2%	14%	2%
August 25-27, 2012	40%	42%	2%	14%	2%
August 18-20, 2012	41%	42%	3%	12%	2%
August 11-13, 2012	43%	40%	2%	14%	2%
August 4-6, 2012	40%	40%	4%	14%	2%
July 28-30, 2012	40%	41%	3%	13%	3%
One Year Ago	40%	38%	2%	18%	2%

	Likely Voters				
	The Democratic Party candidate	The Republican Party candidate	Other	Not sure	I would not vote
September 29-October 1, 2012	43%	43%	2%	13%	0%

**10. Congressional Vote Intention – This Week – Likely Voters**

If an election for U.S. Congress were being held today, who would you vote for in the district where you live?

	Total	Age				Race			Gender		Education		
		18-29	30-44	45-64	65+	White	Black	Hispanic	Male	Female	HS or less	Some college	College graduate
The Democratic Party candidate	43%	53%	45%	40%	34%	33%	80%	54%	40%	46%	40%	44%	44%
The Republican Party candidate	43%	32%	37%	48%	55%	51%	11%	35%	48%	38%	43%	44%	43%
Other	2%	2%	2%	1%	1%	2%	1%	0%	2%	1%	1%	1%	3%
Not sure	13%	13%	16%	11%	11%	14%	7%	10%	10%	15%	16%	11%	10%
I would not vote	0%	–	–	0%	–	0%	0%	–	0%	0%	–	0%	–
Totals (Unweighted)	100% (743)	100% (76)	100% (156)	100% (384)	100% (127)	100% (544)	100% (122)	100% (77)	100% (385)	100% (358)	100% (236)	100% (278)	100% (229)

	Total	Party ID			Ideology			Region				Family Income		
		Dem	Rep	Ind	Lib	Mod	Con	North-east	Mid-west	South	West	Under 40	40-100	100+
The Democratic Party candidate	43%	91%	0%	38%	88%	59%	6%	41%	37%	42%	50%	48%	39%	41%
The Republican Party candidate	43%	2%	88%	37%	1%	25%	80%	42%	47%	42%	42%	31%	47%	53%
Other	2%	1%	0%	3%	1%	3%	1%	2%	1%	2%	1%	3%	1%	–
Not sure	13%	6%	11%	22%	9%	14%	13%	14%	15%	13%	7%	18%	13%	6%
I would not vote	0%	0%	–	–	0%	0%	–	–	–	0%	0%	0%	–	–
Totals (Unweighted)	100% (743)	100% (296)	100% (220)	100% (211)	100% (177)	100% (262)	100% (275)	100% (127)	100% (166)	100% (276)	100% (174)	100% (238)	100% (318)	100% (63)

**If an election for U.S. Congress were being held today,  
who would you vote for in the district where you live?**

(Likely voters only)

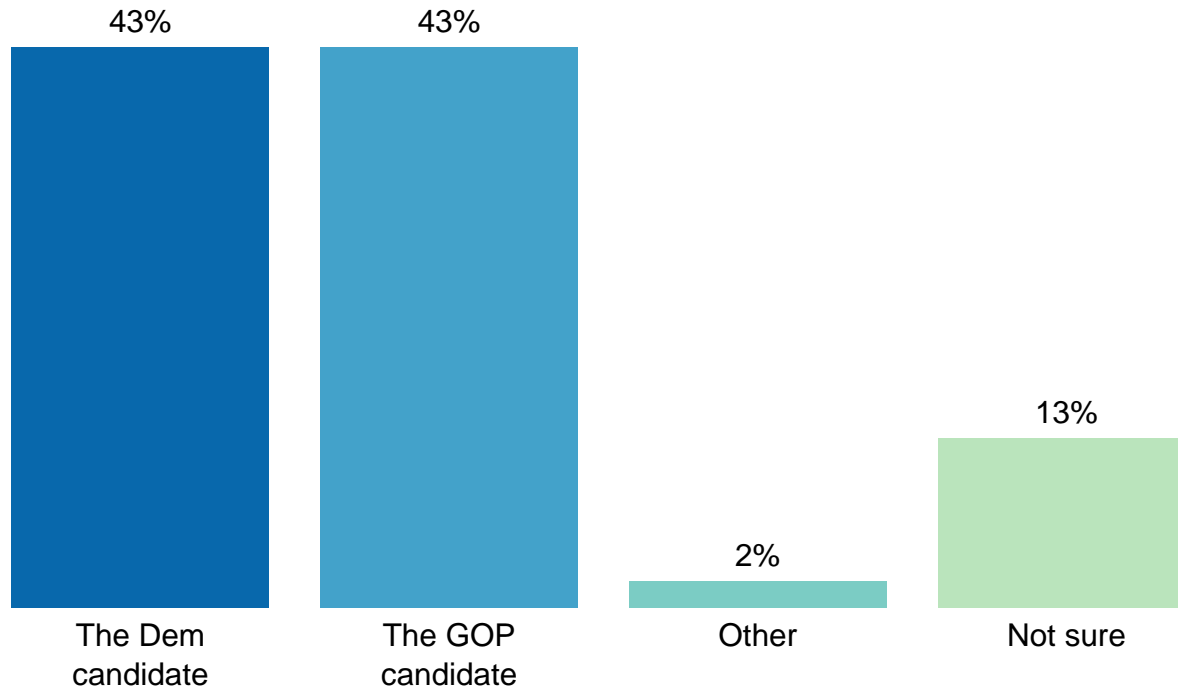


Figure 8: Congressional Vote Intention – Registered Voters

**The Economist/YouGov Poll**  
September 29-October 1, 2012



<b>Sponsorship</b>	<i>The Economist</i>
<b>Fieldwork</b>	YouGov
<b>Interviewing Dates</b>	September 29-October 1, 2012
<b>Target population</b>	U.S. citizens, aged 18 and over.
<b>Sampling method</b>	Respondents were selected from YouGov's panel using sample matching. A random sample (stratified by age, gender, race, education, and region) was selected from the 2005–2007 American Community Study. Voter registration, turnout, religion, news interest, minor party identification, and non-placement on an ideology scale, were imputed from the 2008 Current Population Survey Registration and Voting Supplement and the Pew Religion in American Life Survey. Matching respondents were selected from the YouGov panel, an opt-in Internet panel.
<b>Weighting</b>	The sample was weighted using propensity scores based on age, gender, race, education, news interest, voter registration, and non-placement on an ideology scale. The weights range from 0.01 to 7.44, with a mean of one and a standard deviation of 1.1.
<b>Number of respondents</b>	1,000
<b>Margin of error</b>	± 4.7% (adjusted for weighting)
<b>Margin of error (Registered Voters)</b>	± 5.1% (adjusted for weighting)
<b>Survey mode</b>	Web-based interviews
<b>Full results</b>	Available online at <a href="http://today.yougov.com/news/categories/economist/">http://today.yougov.com/news/categories/economist/</a> .