

Interviewing: August 25-27, 2012
Sample: 1000 Adults nationwide online
759 registered voters nationwide online



806 D Street, SE
Washington, DC 20003

Contact:
Thomas Riehle
Ph: (202) 544-2550

The Economist/YouGov Poll

Weekly Tracking

For immediate release

1. Presidential Vote Preference – Historical

Who will you vote for in the 2012 Presidential election?

	Registered Voters			
	Barack Obama	Mitt Romney	Other	Not sure
August 25-27, 2012	46%	47%	4%	4%
August 18-20, 2012	45%	45%	4%	5%
August 11-13, 2012	47%	44%	3%	6%
August 4-6, 2012	46%	45%	4%	4%
July 28-30, 2012	44%	46%	6%	4%
July 21-23, 2012	44%	45%	5%	6%
July 14-16, 2012	47%	44%	4%	5%
July 7-9, 2012	43%	44%	6%	8%
June 30-July 2, 2012	47%	43%	3%	8%
June 23-25, 2012	45%	44%	4%	7%
One Year Ago	45%	44%	5%	6%

Presidential Vote Preference: Obama vs. Romney

If the 2012 presidential election were being held today,
....would you vote for Barack Obama or Mitt Romney?

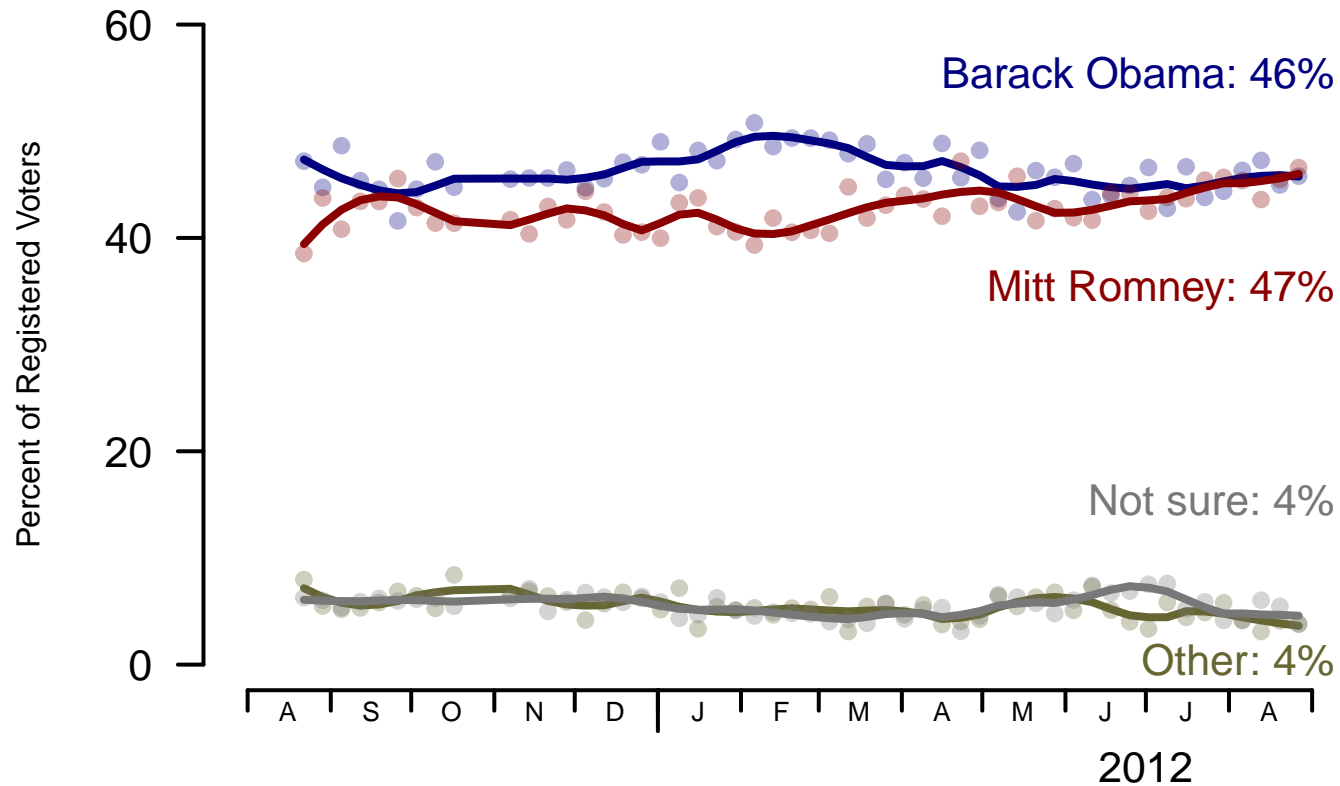


Figure 1: Presidential Vote Preference – Registered Voters

2. Presidential Vote Preference – This Week

Presidential Vote Preference: Obama vs. Romney

	Age					Race			Gender		Education		
	Total	18-29	30-44	45-64	65+	White	Black	Hispanic	Male	Female	HS or less	Some college	College graduate
Barack Obama	46%	49%	47%	44%	45%	39%	86%	58%	41%	50%	41%	48%	49%
Mitt Romney	47%	39%	42%	50%	53%	54%	7%	27%	50%	43%	50%	45%	45%
Other	4%	7%	6%	3%	0%	4%	0%	12%	6%	2%	4%	3%	4%
Not sure	4%	5%	5%	4%	1%	3%	7%	3%	2%	5%	5%	4%	2%
Totals (Unweighted)	100% (851)	100% (94)	100% (177)	100% (429)	100% (151)	100% (643)	100% (120)	100% (88)	100% (425)	100% (426)	100% (321)	100% (269)	100% (261)

	Party ID			Ideology			Region				Family Income			
	Total	Dem	Rep	Ind	Lib	Mod	Con	North-east	Mid-west	South	West	Under 40	40-100	100+
Barack Obama	46%	88%	6%	34%	88%	52%	11%	56%	43%	43%	44%	50%	44%	50%
Mitt Romney	47%	8%	91%	52%	6%	33%	87%	37%	49%	50%	47%	40%	48%	42%
Other	4%	0%	1%	9%	5%	7%	1%	3%	5%	2%	6%	3%	5%	4%
Not sure	4%	4%	1%	5%	2%	7%	1%	5%	3%	4%	3%	6%	3%	4%
Totals (Unweighted)	100% (851)	100% (341)	100% (229)	100% (258)	100% (190)	100% (316)	100% (286)	100% (148)	100% (207)	100% (314)	100% (182)	100% (294)	100% (344)	100% (82)

3. Approval of Obama as President – Historical

Do you approve or disapprove of the way Barack Obama is handling his job as President?

All Adults							
	Total Approve	Total Disapprove	Strongly Approve	Somewhat Approve	Somewhat Disapprove	Strongly Disapprove	Not Sure
August 25-27, 2012	41%	50%	17%	24%	14%	36%	9%
August 18-20, 2012	42%	51%	15%	27%	10%	41%	7%
August 11-13, 2012	43%	50%	15%	28%	12%	38%	7%
August 4-6, 2012	44%	50%	17%	27%	11%	39%	6%
July 28-30, 2012	42%	51%	19%	23%	16%	35%	7%
July 21-23, 2012	41%	53%	15%	26%	14%	39%	6%
July 14-16, 2012	45%	50%	19%	26%	13%	37%	5%
July 7-9, 2012	43%	51%	17%	26%	14%	37%	6%
June 30-July 2, 2012	42%	52%	18%	24%	13%	39%	5%
June 23-25, 2012	40%	53%	16%	24%	14%	39%	6%
One Year Ago	38%	54%	13%	25%	16%	38%	7%

Registered Voters							
	Total Approve	Total Disapprove	Strongly Approve	Somewhat Approve	Somewhat Disapprove	Strongly Disapprove	Not Sure
August 25-27, 2012	43%	55%	18%	25%	13%	42%	2%
August 18-20, 2012	42%	55%	17%	25%	10%	45%	3%
August 11-13, 2012	44%	52%	18%	26%	11%	41%	5%
August 4-6, 2012	44%	53%	19%	25%	9%	44%	4%
July 28-30, 2012	42%	55%	20%	22%	13%	42%	3%
July 21-23, 2012	40%	57%	16%	24%	13%	44%	3%
July 14-16, 2012	45%	53%	18%	27%	12%	41%	1%
July 7-9, 2012	43%	54%	19%	24%	12%	42%	3%
June 30-July 2, 2012	46%	52%	22%	24%	12%	40%	2%
June 23-25, 2012	44%	52%	19%	25%	10%	42%	4%
One Year Ago	40%	55%	14%	26%	14%	41%	4%

Obama Approval

"Do you approve or disapprove of the way Barack Obama is handling his job as President?"

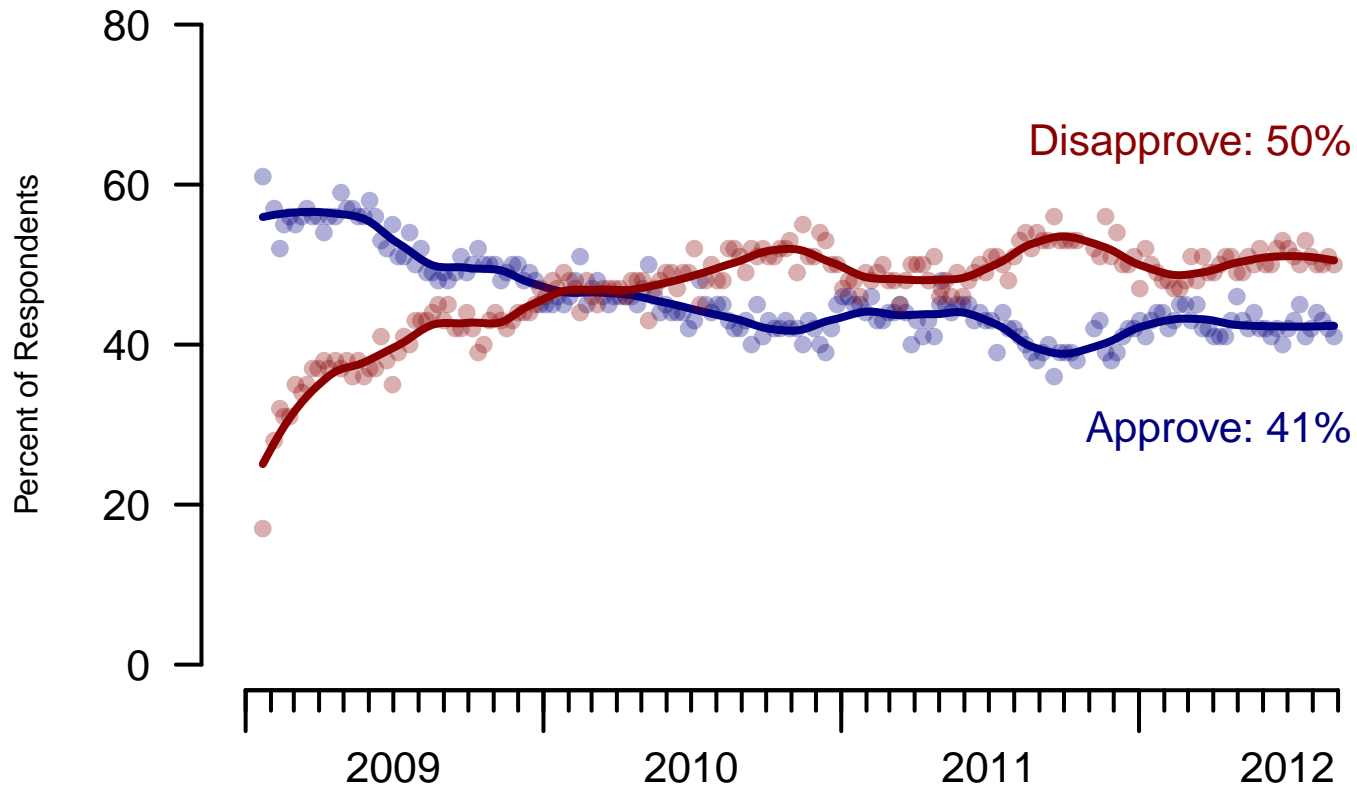


Figure 2: Obama Approval – All Adults

Obama Approval

"Do you approve or disapprove of the way Barack Obama is handling his job as President?"

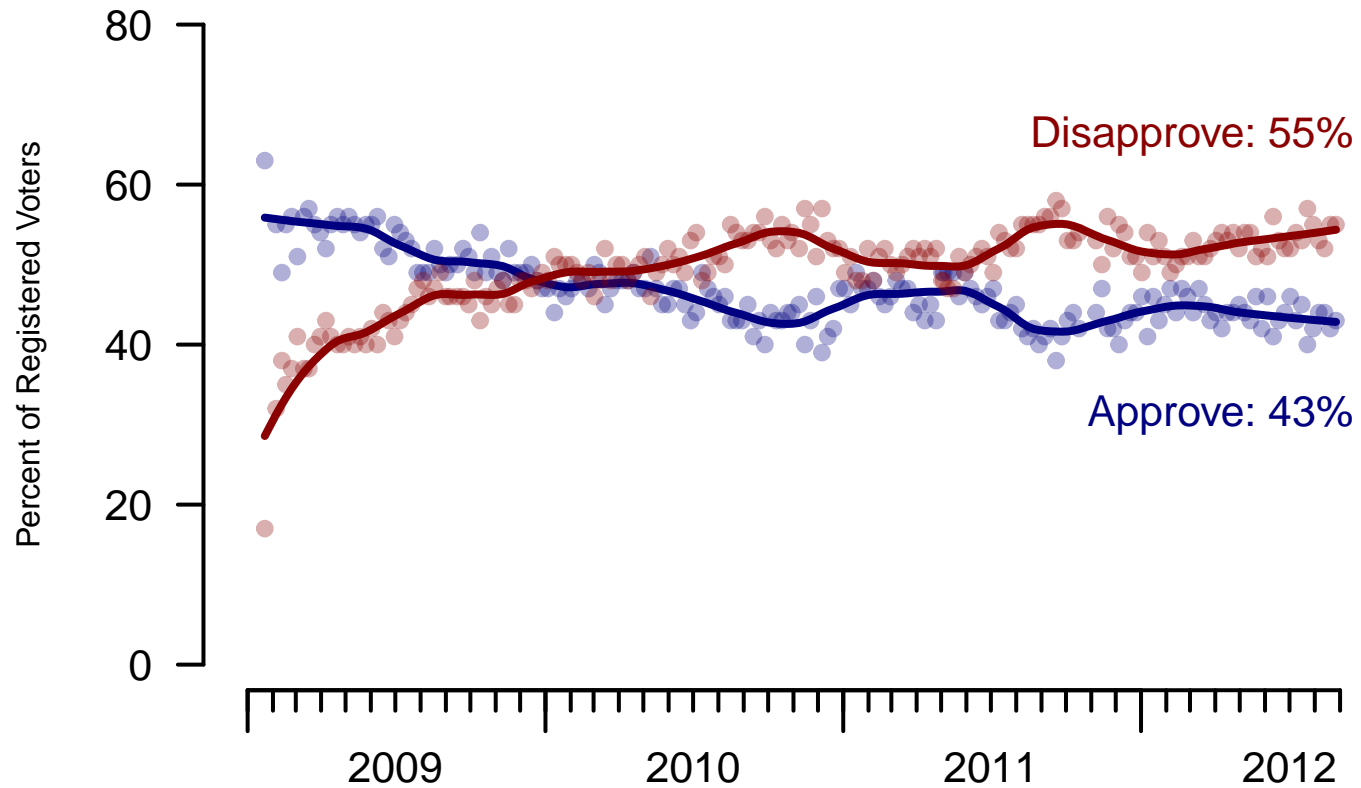


Figure 3: Obama Approval – Registered Voters

4. Approval of Obama as President – This Week

Do you approve or disapprove of the way Barack Obama is handling his job as President?

	Age					Race			Gender		Education		
	Total	18-29	30-44	45-64	65+	White	Black	Hispanic	Male	Female	HS or less	Some college	College graduate
Strongly Approve	17%	11%	18%	20%	17%	12%	52%	20%	16%	18%	17%	17%	18%
Somewhat Approve	24%	28%	22%	26%	19%	24%	27%	23%	26%	22%	22%	26%	26%
Somewhat Disapprove	14%	20%	18%	9%	11%	14%	10%	19%	15%	13%	13%	14%	16%
Strongly Disapprove	36%	24%	33%	43%	42%	42%	8%	20%	41%	32%	36%	37%	37%
Not Sure	9%	16%	9%	3%	11%	8%	3%	18%	3%	14%	13%	6%	4%
Totals (Unweighted)	100% (1,000)	100% (125)	100% (215)	100% (500)	100% (160)	100% (769)	100% (131)	100% (100)	100% (470)	100% (530)	100% (418)	100% (307)	100% (275)

	Party ID			Ideology			Region				Family Income			
	Total	Dem	Rep	Ind	Lib	Mod	Con	North-east	Mid-west	South	West	Under 40	40-100	100+
Strongly Approve	17%	37%	3%	11%	34%	20%	6%	19%	15%	19%	14%	18%	18%	14%
Somewhat Approve	24%	43%	4%	22%	47%	29%	5%	34%	22%	20%	24%	25%	24%	34%
Somewhat Disapprove	14%	8%	14%	20%	14%	20%	10%	9%	14%	15%	16%	14%	14%	17%
Strongly Disapprove	36%	4%	77%	43%	3%	23%	77%	28%	36%	40%	38%	30%	41%	33%
Not Sure	9%	7%	2%	4%	2%	8%	2%	10%	13%	5%	9%	13%	4%	1%
Totals (Unweighted)	100% (1,000)	100% (375)	100% (252)	100% (308)	100% (207)	100% (369)	100% (317)	100% (174)	100% (234)	100% (373)	100% (219)	100% (382)	100% (382)	100% (86)

5. Approval of U.S. Congress – Historical

Overall, do you approve or disapprove of the way that the United States Congress is handling its job?

All Adults

	Total Approve	Total Disapprove	Strongly Approve	Somewhat Approve	Neutral	Somewhat Disapprove	Strongly Disapprove	Not Sure
August 25-27, 2012	9%	67%	1%	8%	15%	23%	44%	10%
August 18-20, 2012	7%	64%	0%	7%	19%	24%	40%	10%
August 11-13, 2012	11%	61%	2%	9%	19%	22%	39%	10%
August 4-6, 2012	8%	66%	1%	7%	17%	22%	44%	9%
July 28-30, 2012	9%	66%	2%	7%	17%	27%	39%	8%
July 21-23, 2012	7%	67%	1%	6%	16%	23%	44%	9%
July 14-16, 2012	13%	63%	4%	9%	16%	24%	39%	8%
July 7-9, 2012	8%	67%	1%	7%	17%	24%	43%	8%
June 30-July 2, 2012	9%	64%	1%	8%	14%	23%	41%	13%
June 23-25, 2012	8%	67%	1%	7%	14%	24%	43%	10%
One Year Ago	8%	70%	2%	6%	14%	24%	46%	9%

Registered Voters

	Total Approve	Total Disapprove	Strongly Approve	Somewhat Approve	Neutral	Somewhat Disapprove	Strongly Disapprove	Not Sure
August 25-27, 2012	8%	73%	1%	7%	14%	23%	50%	5%
August 18-20, 2012	8%	72%	1%	7%	14%	26%	46%	6%
August 11-13, 2012	11%	67%	1%	10%	15%	24%	43%	7%
August 4-6, 2012	10%	74%	2%	8%	12%	23%	51%	5%
July 28-30, 2012	11%	72%	2%	9%	13%	29%	43%	5%
July 21-23, 2012	8%	74%	2%	6%	14%	24%	50%	5%
July 14-16, 2012	12%	70%	2%	10%	14%	26%	44%	4%
July 7-9, 2012	9%	73%	2%	7%	14%	25%	48%	5%
June 30-July 2, 2012	9%	70%	1%	8%	14%	25%	45%	7%
June 23-25, 2012	9%	71%	1%	8%	14%	25%	46%	6%
One Year Ago	8%	76%	2%	6%	12%	25%	51%	4%

Congress Approval

"Do you approve of the way the
U.S. Congress is handling its job?"

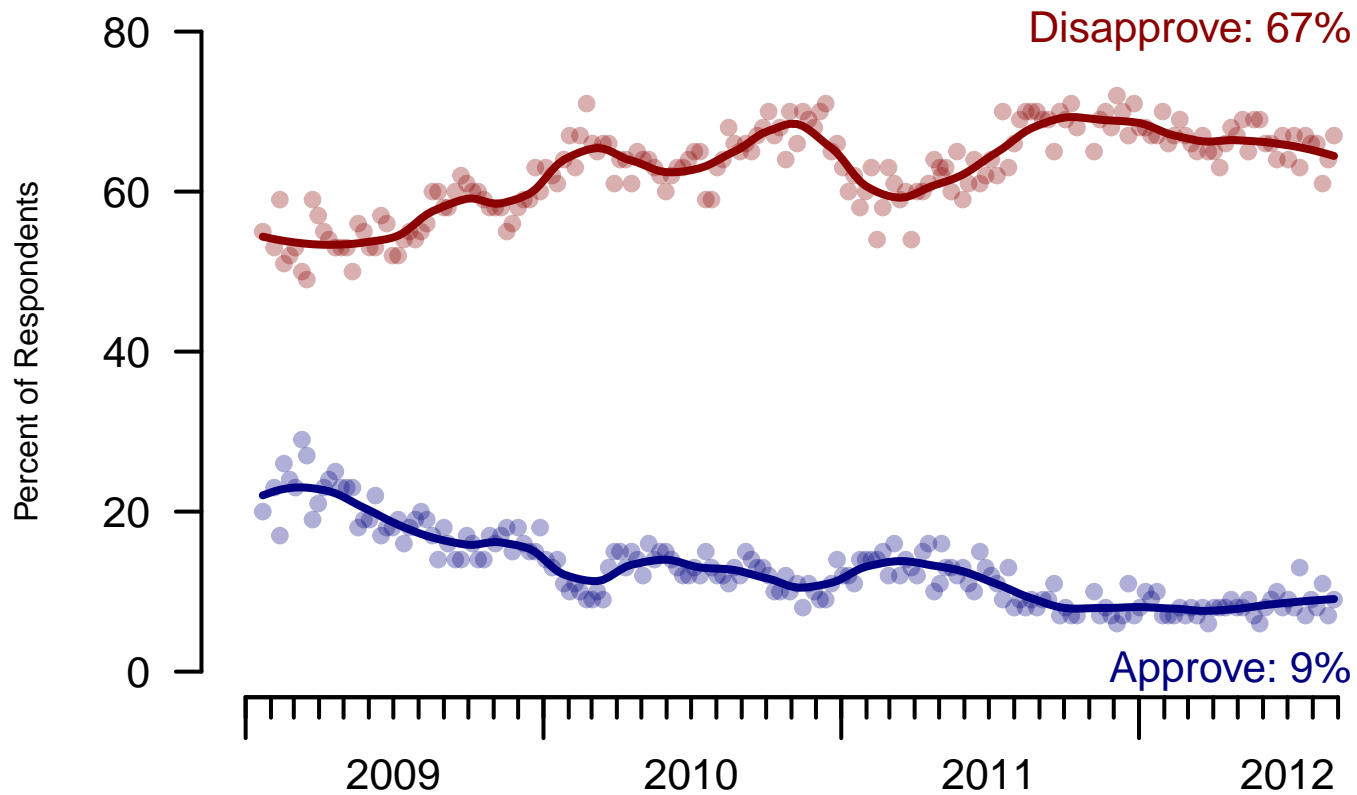


Figure 4: Congress Approval – All Adults

Congress Approval

"Do you approve of the way the
U.S. Congress is handling its job?"

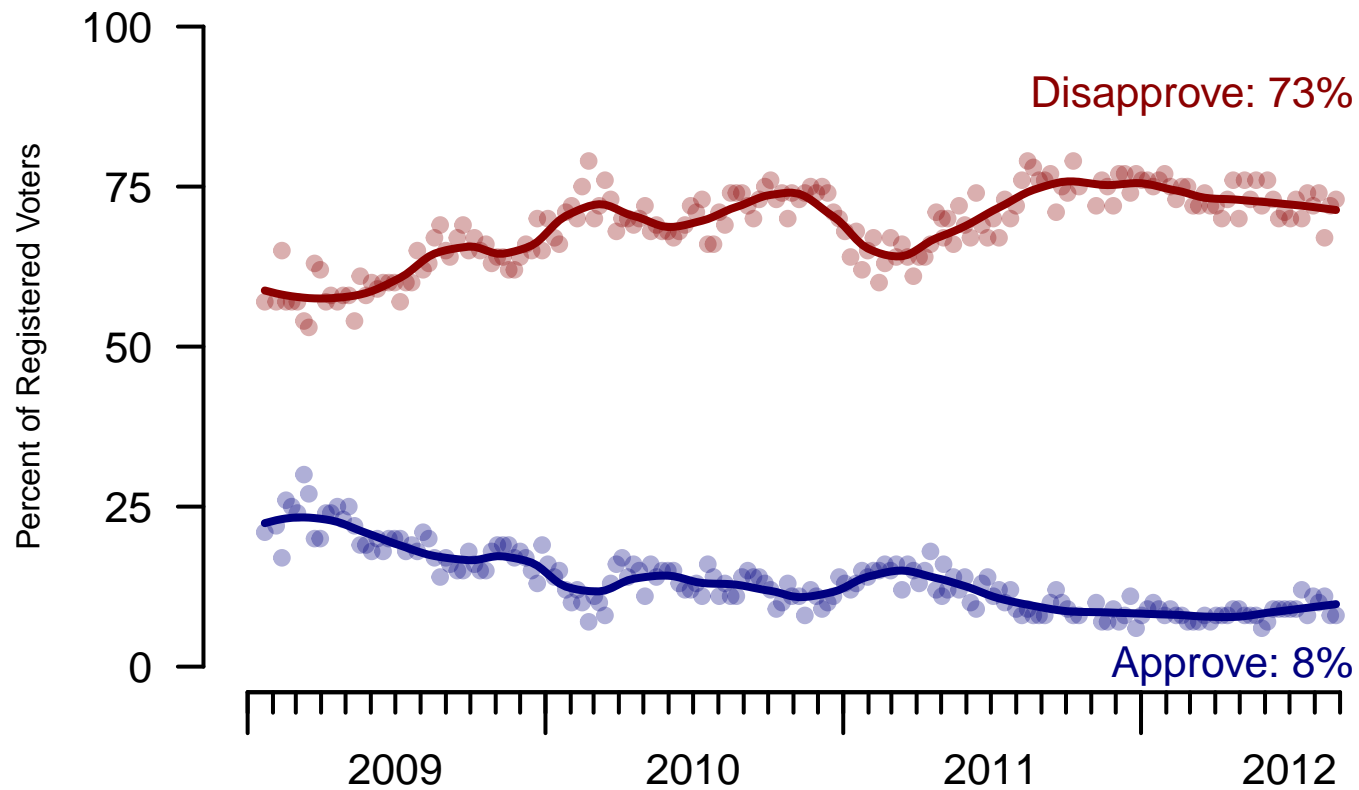


Figure 5: Congress Approval – Registered Voters

6. Approval of U.S. Congress – This Week

Overall, do you approve or disapprove of the way that the United States Congress is handling its job?

	Age					Race			Gender		Education		
	Total	18-29	30-44	45-64	65+	White	Black	Hispanic	Male	Female	HS or less	Some college	College graduate
Strongly approve	1%	1%	1%	1%	–	1%	4%	–	1%	0%	2%	1%	0%
Somewhat approve	8%	5%	5%	12%	4%	6%	13%	14%	8%	7%	6%	9%	8%
Neither approve nor disapprove	15%	22%	11%	14%	18%	13%	24%	21%	13%	17%	19%	13%	11%
Somewhat disapprove	23%	20%	26%	21%	23%	25%	13%	12%	18%	27%	20%	24%	26%
Strongly disapprove	44%	30%	44%	46%	53%	46%	36%	34%	53%	35%	37%	46%	53%
Not sure	10%	22%	13%	5%	1%	9%	10%	19%	5%	14%	16%	8%	2%
Totals (Unweighted)	100% (999)	100% (125)	100% (215)	100% (500)	100% (159)	100% (768)	100% (131)	100% (100)	100% (469)	100% (530)	100% (417)	100% (307)	100% (275)

	Party ID			Ideology			Region				Family Income			
	Total	Dem	Rep	Ind	Lib	Mod	Con	North-east	Mid-west	South	West	Under 40	40-100	100+
Strongly approve	1%	1%	1%	0%	0%	1%	2%	2%	0%	1%	0%	1%	1%	–
Somewhat approve	8%	9%	10%	5%	3%	9%	11%	8%	7%	9%	6%	6%	8%	6%
Neither approve nor disapprove	15%	17%	18%	11%	14%	14%	15%	15%	10%	17%	17%	20%	10%	6%
Somewhat disapprove	23%	24%	25%	24%	18%	23%	28%	23%	20%	24%	22%	23%	25%	20%
Strongly disapprove	44%	43%	41%	55%	58%	47%	41%	37%	47%	42%	49%	33%	50%	65%
Not sure	10%	6%	6%	5%	6%	6%	4%	15%	14%	6%	6%	17%	4%	3%
Totals (Unweighted)	100% (999)	100% (375)	100% (252)	100% (307)	100% (206)	100% (369)	100% (317)	100% (174)	100% (233)	100% (373)	100% (219)	100% (381)	100% (382)	100% (86)

7. Direction of country – Historical

Would you say things in this country today are...

	All Adults		
	Right Track	Wrong Direction	Not Sure
August 25-27, 2012	28%	61%	11%
August 18-20, 2012	21%	62%	17%
August 11-13, 2012	22%	62%	17%
August 4-6, 2012	25%	60%	15%
July 28-30, 2012	22%	62%	16%
July 21-23, 2012	25%	60%	15%
July 14-16, 2012	27%	58%	15%
July 7-9, 2012	27%	57%	16%
June 30-July 2, 2012	28%	56%	16%
June 23-25, 2012	23%	62%	15%
One Year Ago	14%	70%	15%

	Registered Voters		
	Right Track	Wrong Direction	Not Sure
August 25-27, 2012	28%	62%	9%
August 18-20, 2012	25%	61%	14%
August 11-13, 2012	24%	62%	14%
August 4-6, 2012	28%	61%	11%
July 28-30, 2012	25%	62%	13%
July 21-23, 2012	27%	60%	13%
July 14-16, 2012	28%	60%	12%
July 7-9, 2012	29%	59%	13%
June 30-July 2, 2012	30%	57%	13%
June 23-25, 2012	26%	63%	11%
One Year Ago	15%	73%	12%

Direction of Country

"Would you say things in this country today are generally headed in the right direction or off on the wrong track?"

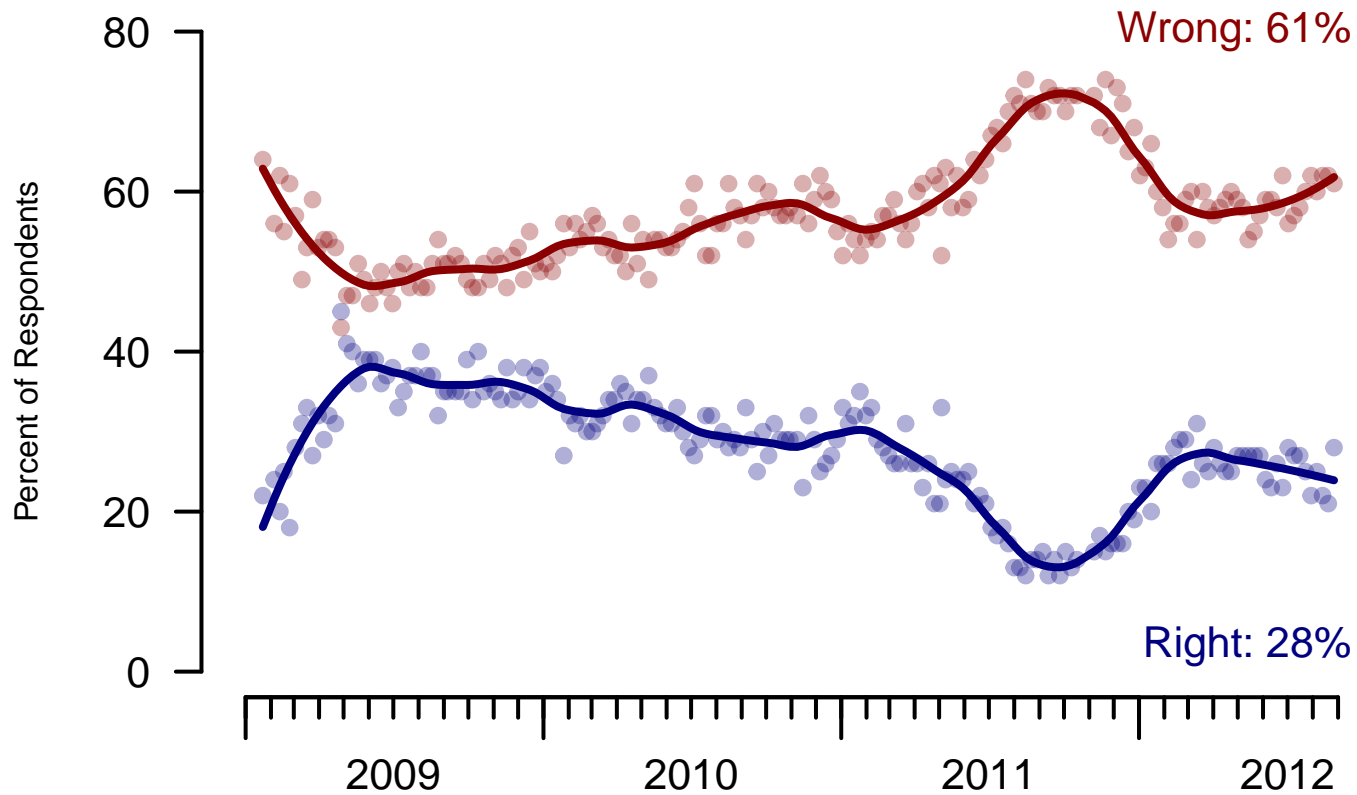


Figure 6: Direction of Country – All Adults

Direction of Country

"Would you say things in this country today are generally headed in the right direction or off on the wrong track?"

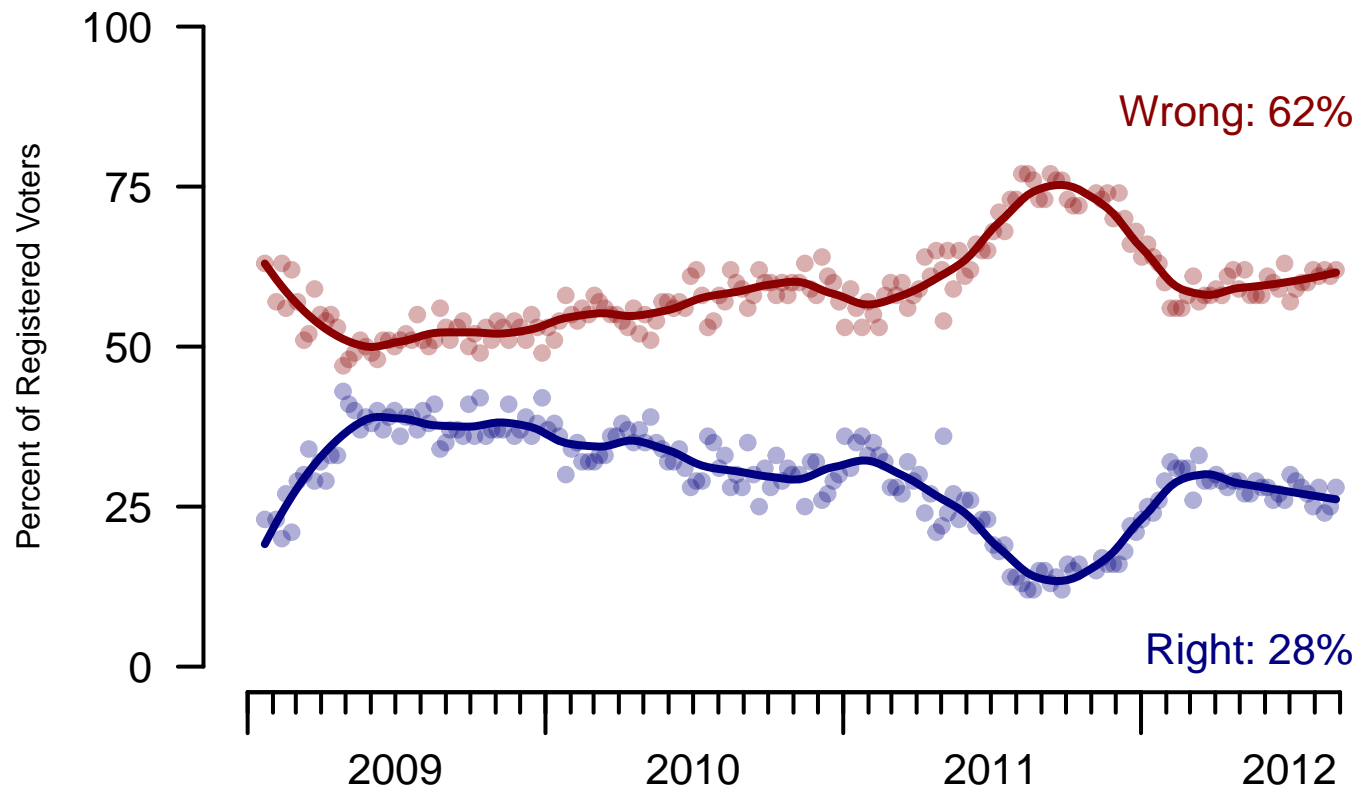


Figure 7: Direction of Country – Registered Voters

8. Direction of Country – This Week

Would you say things in this country today are...

	Total	Age				Race			Gender		Education		
		18-29	30-44	45-64	65+	White	Black	Hispanic	Male	Female	HS or less	Some college	College graduate
Generally headed in the right direction	28%	26%	26%	30%	27%	22%	59%	35%	30%	26%	25%	29%	31%
Off on the wrong track	61%	60%	61%	60%	66%	68%	24%	44%	62%	61%	62%	60%	61%
Not sure	11%	14%	13%	10%	7%	9%	17%	21%	8%	14%	13%	11%	8%
Totals (Unweighted)	100% (999)	100% (125)	100% (215)	100% (499)	100% (160)	100% (768)	100% (131)	100% (100)	100% (470)	100% (529)	100% (418)	100% (307)	100% (274)

	Total	Party ID			Ideology			Region				Family Income		
		Dem	Rep	Ind	Lib	Mod	Con	North-east	Mid-west	South	West	Under 40	40-100	100+
Generally headed in the right direction	28%	53%	6%	25%	54%	34%	11%	30%	27%	27%	28%	24%	30%	36%
Off on the wrong track	61%	33%	91%	67%	33%	56%	86%	63%	59%	62%	61%	61%	63%	58%
Not sure	11%	14%	3%	8%	13%	10%	3%	7%	14%	11%	12%	15%	7%	6%
Totals (Unweighted)	100% (999)	100% (375)	100% (252)	100% (307)	100% (207)	100% (368)	100% (317)	100% (174)	100% (234)	100% (373)	100% (218)	100% (382)	100% (382)	100% (86)

9. Congressional Vote Intention – Historical

If an election for U.S. Congress were being held today, who would you vote for in the district where you live?

	Registered Voters				
	The Democratic Party candidate	The Republican Party candidate	Other	Not sure	I would not vote
August 25-27, 2012	40%	42%	2%	14%	2%
August 18-20, 2012	41%	42%	3%	12%	2%
August 11-13, 2012	43%	40%	2%	14%	2%
August 4-6, 2012	40%	40%	4%	14%	2%
July 28-30, 2012	40%	41%	3%	13%	3%
July 21-23, 2012	41%	44%	1%	11%	3%
July 14-16, 2012	42%	41%	2%	13%	3%
July 7-9, 2012	42%	38%	2%	15%	3%
June 30-July 2, 2012	41%	40%	2%	14%	2%
June 23-25, 2012	43%	37%	3%	15%	2%
One Year Ago	40%	37%	0%	20%	3%

2012 Congressional Vote Intention

"If an election for U.S. Congress were being held today, who would you vote for in the district where you live?"

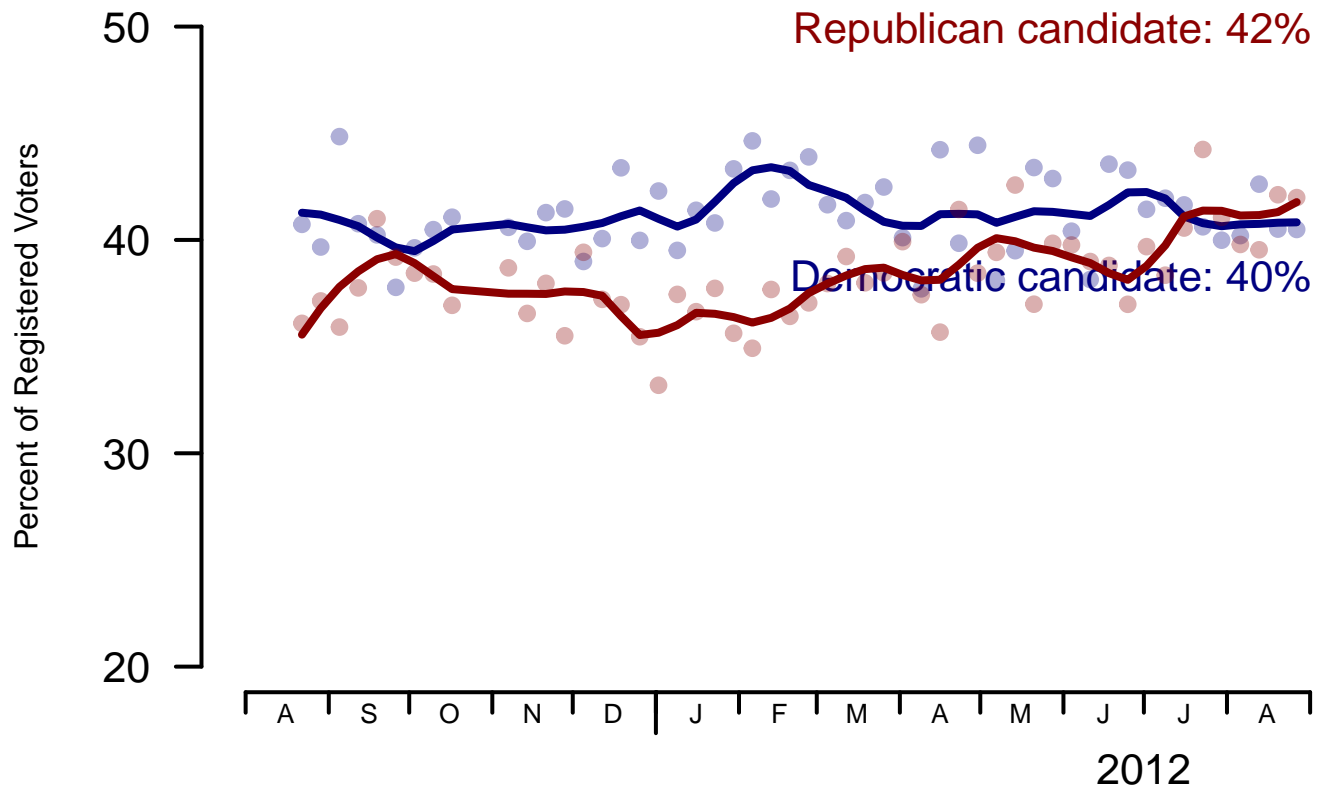


Figure 8: Congressional Vote Intention – Registered Voters

10. Congressional Vote Intention – This Week

If an election for U.S. Congress were being held today, who would you vote for in the district where you live?

	Total	Age				Race			Gender		Education		
		18-29	30-44	45-64	65+	White	Black	Hispanic	Male	Female	HS or less	Some college	College graduate
The Democratic Party candidate	40%	45%	42%	38%	38%	34%	78%	52%	37%	44%	35%	42%	45%
The Republican Party candidate	42%	36%	33%	47%	50%	49%	5%	23%	48%	36%	46%	37%	42%
Other	2%	1%	3%	2%	2%	2%	2%	2%	2%	1%	1%	3%	2%
Not sure	14%	16%	20%	11%	9%	13%	13%	23%	11%	17%	14%	15%	11%
I would not vote	2%	2%	2%	2%	2%	2%	2%	1%	1%	3%	3%	2%	1%
Totals (Unweighted)	100% (854)	100% (94)	100% (178)	100% (429)	100% (153)	100% (646)	100% (120)	100% (88)	100% (427)	100% (427)	100% (323)	100% (269)	100% (262)

	Total	Party ID			Ideology			Region				Family Income		
		Dem	Rep	Ind	Lib	Mod	Con	North-east	Mid-west	South	West	Under 40	40-100	100+
The Democratic Party candidate	40%	83%	4%	30%	84%	50%	6%	51%	40%	37%	38%	44%	38%	49%
The Republican Party candidate	42%	3%	91%	43%	3%	28%	86%	33%	41%	44%	48%	35%	43%	41%
Other	2%	0%	0%	5%	1%	1%	2%	2%	1%	2%	1%	1%	3%	2%
Not sure	14%	12%	5%	20%	11%	19%	5%	13%	15%	14%	12%	16%	15%	8%
I would not vote	2%	2%	1%	2%	1%	2%	1%	1%	2%	2%	1%	4%	1%	—
Totals (Unweighted)	100% (854)	100% (342)	100% (230)	100% (258)	100% (191)	100% (316)	100% (287)	100% (148)	100% (208)	100% (315)	100% (183)	100% (295)	100% (346)	100% (82)

Sponsorship	<i>The Economist</i>
Fieldwork	YouGov
Interviewing Dates	August 25-27, 2012
Target population	U.S. citizens, aged 18 and over.
Sampling method	Respondents were selected from YouGov's panel using sample matching. A random sample (stratified by age, gender, race, education, and region) was selected from the 2005–2007 American Community Survey. Voter registration, turnout, religion, news interest, minor party identification, and non-placement on an ideology scale, were imputed from the 2008 Current Population Survey Registration and Voting Supplement and the Pew Religion in American Life Survey. Matching respondents were selected from the YouGov panel, an opt-in Internet panel.
Weighting	The sample was weighted using propensity scores based on age, gender, race, education, news interest, voter registration, and non-placement on an ideology scale. The weights range from 0.12 to 7.11, with a mean of one and a standard deviation of 0.9.
Number of respondents	1,000
Margin of error	± 4.2% (adjusted for weighting)
Margin of error (Registered Voters)	± 4.5% (adjusted for weighting)
Survey mode	Web-based interviews
Full results	Available online at http://today.yougov.com/news/categories/economist/ .