

Interviewing: June 2-4, 2012  
Sample: 1000 Adults nationwide online  
709 registered voters nationwide online



806 D Street, SE  
Washington, DC 20003

Contact:  
Thomas Riehle  
Ph: (202) 544-2550

# *The Economist/YouGov* Poll

## Weekly Tracking

For immediate release

**1. Approval of Obama as President – Historical**

Do you approve or disapprove of the way Barack Obama is handling his job as President?

All Adults

	<b>Total Approve</b>	<b>Total Disapprove</b>	Strongly Approve	Somewhat Approve	Somewhat Disapprove	Strongly Disapprove	Not Sure
June 2-4, 2012	42%	50%	15%	27%	17%	33%	8%
May 26-28, 2012	42%	52%	16%	26%	16%	36%	7%
May 19-21, 2012	44%	50%	17%	27%	12%	38%	6%
May 12-14, 2012	42%	51%	16%	26%	13%	38%	7%
May 5-7, 2012	43%	49%	16%	27%	14%	35%	8%
April 28-30, 2012	46%	49%	19%	27%	14%	35%	5%
April 21-23, 2012	43%	51%	16%	27%	13%	38%	7%
April 14-17, 2012	41%	51%	17%	24%	15%	36%	7%
April 7-10, 2012	41%	50%	17%	24%	13%	37%	9%
March 31-April 3, 2012	41%	49%	16%	25%	13%	36%	9%
One Year Ago	45%	48%	16%	29%	16%	32%	7%

Registered Voters

	<b>Total Approve</b>	<b>Total Disapprove</b>	Strongly Approve	Somewhat Approve	Somewhat Disapprove	Strongly Disapprove	Not Sure
June 2-4, 2012	46%	51%	18%	28%	14%	37%	2%
May 26-28, 2012	42%	52%	17%	25%	13%	39%	5%
May 19-21, 2012	46%	51%	20%	26%	11%	40%	3%
May 12-14, 2012	43%	54%	17%	26%	12%	42%	3%
May 5-7, 2012	44%	54%	19%	25%	12%	42%	2%
April 28-30, 2012	45%	52%	19%	26%	12%	40%	3%
April 21-23, 2012	44%	54%	18%	26%	10%	44%	2%
April 14-17, 2012	44%	53%	18%	26%	13%	40%	3%
April 7-10, 2012	42%	54%	20%	22%	11%	43%	4%
March 31-April 3, 2012	44%	53%	18%	26%	13%	40%	3%
One Year Ago	47%	50%	18%	29%	15%	35%	3%

## Obama Approval

"Do you approve or disapprove of the way Barack Obama is handling his job as President?"

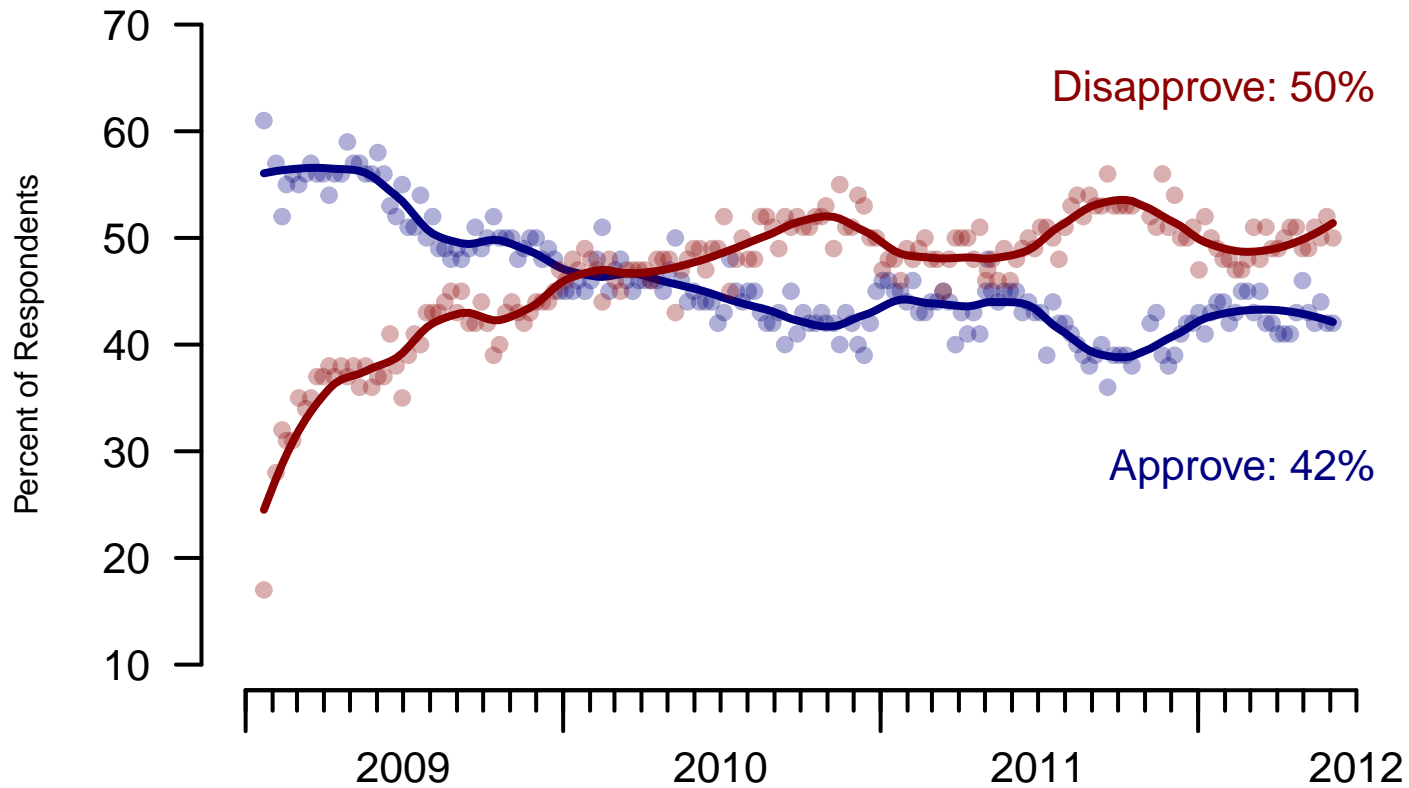


Figure 1: Obama Approval – All Adults

## Obama Approval

"Do you approve or disapprove of the way Barack Obama is handling his job as President?"

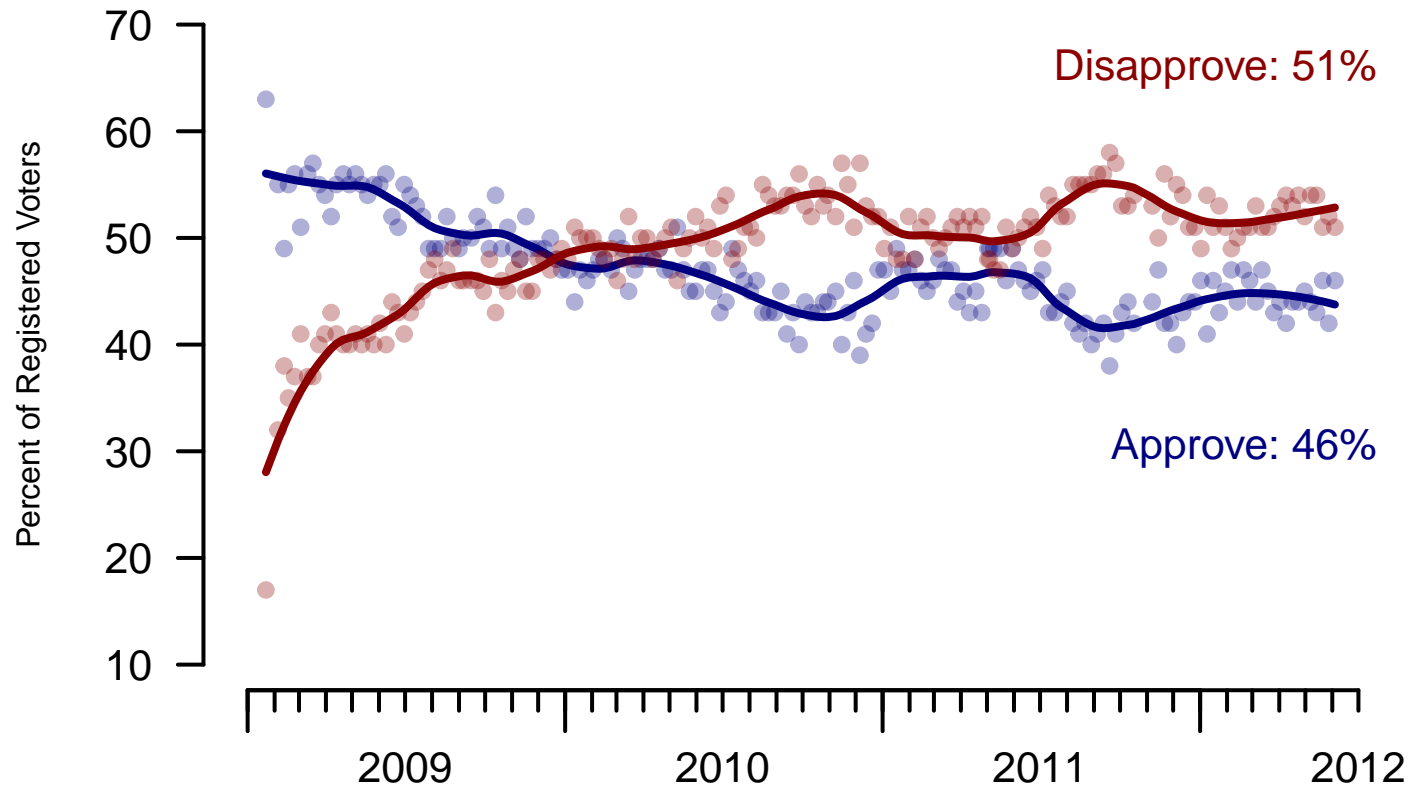


Figure 2: Obama Approval – Registered Voters

**2. Approval of Obama as President – This Week**

Do you approve or disapprove of the way Barack Obama is handling his job as President?

	Age				Race			Gender		Education		
	Total	18-29	30-64	65+	White	Black	Hispanic	Male	Female	HS or Less	Some College	College Grad
Strongly Approve	15.2%	11.9%	16.0%	16.4%	10.8%	40.3%	21.5%	13.9%	16.4%	11.5%	15.9%	20.7%
Somewhat Approve	27.2%	30.5%	26.7%	24.8%	26.5%	37.7%	19.9%	29.1%	25.5%	22.9%	29.4%	32.1%
Somewhat Disapprove	16.9%	20.2%	17.7%	10.1%	18.5%	4.8%	18.4%	16.5%	17.3%	18.2%	18.2%	13.2%
Strongly Disapprove	33.0%	19.5%	33.6%	47.7%	38.3%	2.2%	25.7%	37.2%	29.2%	36.3%	29.7%	31.4%
Not Sure	7.7%	17.9%	6.0%	1.1%	5.9%	15.0%	14.5%	3.4%	11.6%	11.2%	6.9%	2.5%
Totals (Unweighted)	100.0% (1,000)	100.0% (129)	100.0% (703)	100.0% (168)	100.0% (782)	100.0% (128)	100.0% (90)	100.0% (466)	100.0% (534)	100.0% (388)	100.0% (322)	100.0% (290)

	Party ID				Ideology			Region				Family Income		
	Total	Dem	Rep	Ind	Lib	Mod	Con	Northeast	Midwest	South	West	Under 40	40-100	100+
Strongly Approve	15.2%	32.1%	1.4%	14.8%	36.9%	17.8%	3.8%	18.2%	11.9%	15.8%	14.8%	16.8%	16.2%	13.9%
Somewhat Approve	27.2%	47.5%	6.5%	25.1%	45.3%	38.3%	10.5%	28.4%	28.6%	20.6%	35.2%	24.8%	31.5%	31.1%
Somewhat Disapprove	16.9%	12.4%	19.2%	18.8%	13.3%	20.1%	16.6%	17.2%	14.8%	16.9%	18.6%	19.4%	15.4%	15.7%
Strongly Disapprove	33.0%	6.4%	70.3%	37.1%	3.1%	20.6%	67.3%	27.0%	36.4%	37.5%	27.8%	29.2%	33.7%	35.8%
Not Sure	7.7%	1.6%	2.7%	4.2%	1.5%	3.2%	1.9%	9.1%	8.3%	9.1%	3.5%	9.7%	3.2%	3.4%
Totals (Unweighted)	100.0% (1,000)	100.0% (371)	100.0% (260)	100.0% (288)	100.0% (212)	100.0% (362)	100.0% (312)	100.0% (189)	100.0% (211)	100.0% (383)	100.0% (217)	100.0% (365)	100.0% (383)	100.0% (141)

**3. Approval of U.S. Congress – Historical**

Overall, do you approve or disapprove of the way that the United States Congress is handling its job?

All Adults

	<b>Total Approve</b>	<b>Total Disapprove</b>	Strongly Approve	Somewhat Approve	Neutral	Somewhat Disapprove	Strongly Disapprove	Not Sure
June 2-4, 2012	8%	66%	2%	6%	16%	28%	38%	10%
May 26-28, 2012	6%	69%	1%	5%	14%	26%	43%	11%
May 19-21, 2012	7%	69%	2%	5%	16%	24%	45%	7%
May 12-14, 2012	9%	65%	2%	7%	18%	23%	42%	7%
May 5-7, 2012	8%	69%	1%	7%	14%	25%	44%	9%
April 28-30, 2012	8%	67%	1%	7%	16%	23%	44%	9%
April 21-23, 2012	9%	68%	1%	8%	13%	27%	41%	10%
April 14-17, 2012	8%	66%	2%	6%	16%	25%	41%	10%
April 7-10, 2012	8%	63%	1%	7%	15%	25%	38%	14%
March 31-April 3, 2012	8%	65%	2%	6%	14%	24%	41%	13%
One Year Ago	11%	61%	1%	10%	18%	28%	33%	11%

Registered Voters

	<b>Total Approve</b>	<b>Total Disapprove</b>	Strongly Approve	Somewhat Approve	Neutral	Somewhat Disapprove	Strongly Disapprove	Not Sure
June 2-4, 2012	7%	76%	2%	5%	13%	33%	43%	4%
May 26-28, 2012	6%	72%	1%	5%	14%	26%	46%	8%
May 19-21, 2012	8%	76%	2%	6%	13%	25%	51%	4%
May 12-14, 2012	8%	73%	1%	7%	15%	25%	48%	4%
May 5-7, 2012	8%	76%	1%	7%	11%	27%	49%	4%
April 28-30, 2012	9%	70%	1%	8%	15%	24%	46%	5%
April 21-23, 2012	9%	76%	1%	8%	11%	30%	46%	4%
April 14-17, 2012	8%	73%	2%	6%	14%	27%	46%	5%
April 7-10, 2012	8%	70%	1%	7%	13%	27%	43%	7%
March 31-April 3, 2012	8%	72%	2%	6%	12%	26%	46%	7%
One Year Ago	10%	67%	1%	9%	17%	31%	36%	6%

### Congress Approval

"Do you approve of the way the  
U.S. Congress is handling its job?"

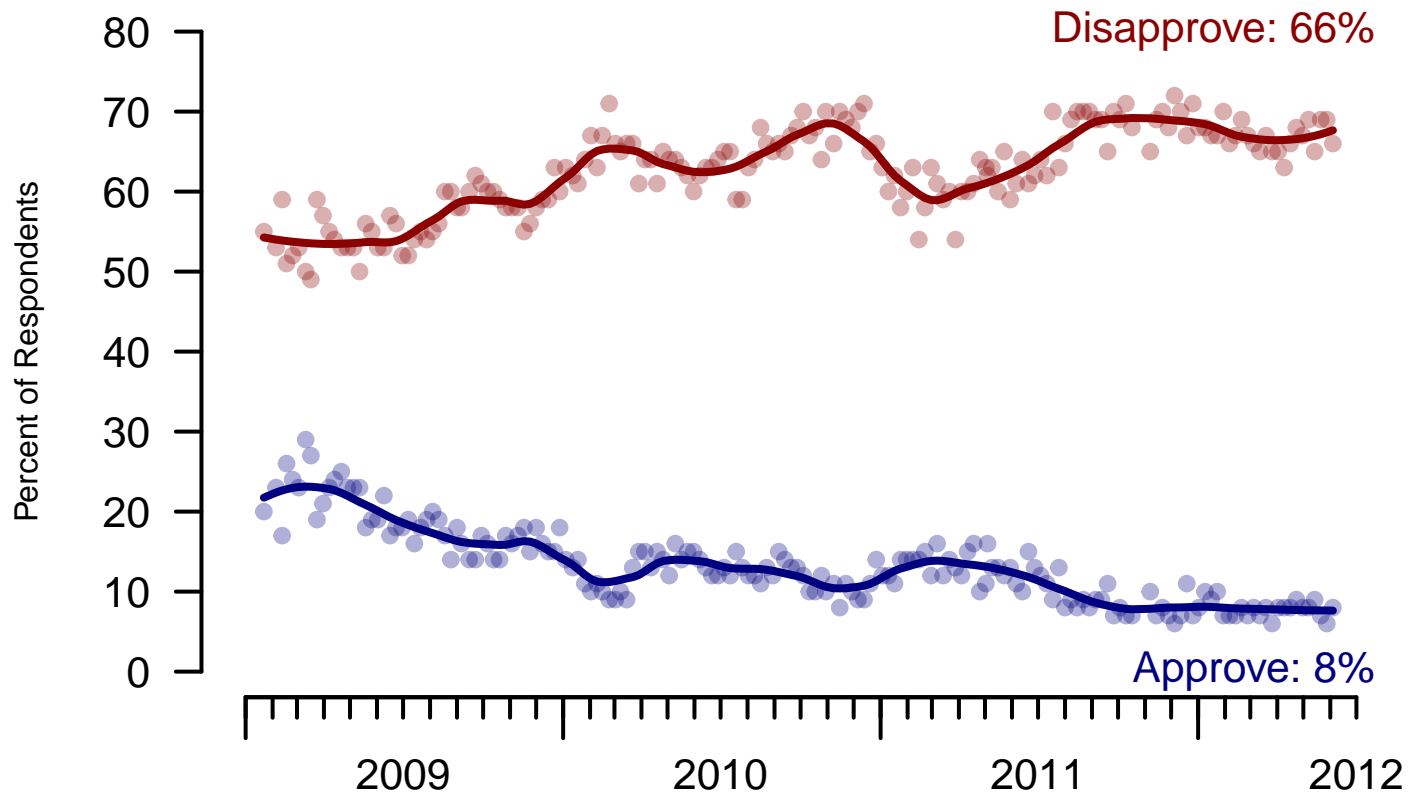


Figure 3: Congress Approval – All Adults

### Congress Approval

"Do you approve of the way the  
U.S. Congress is handling its job?"

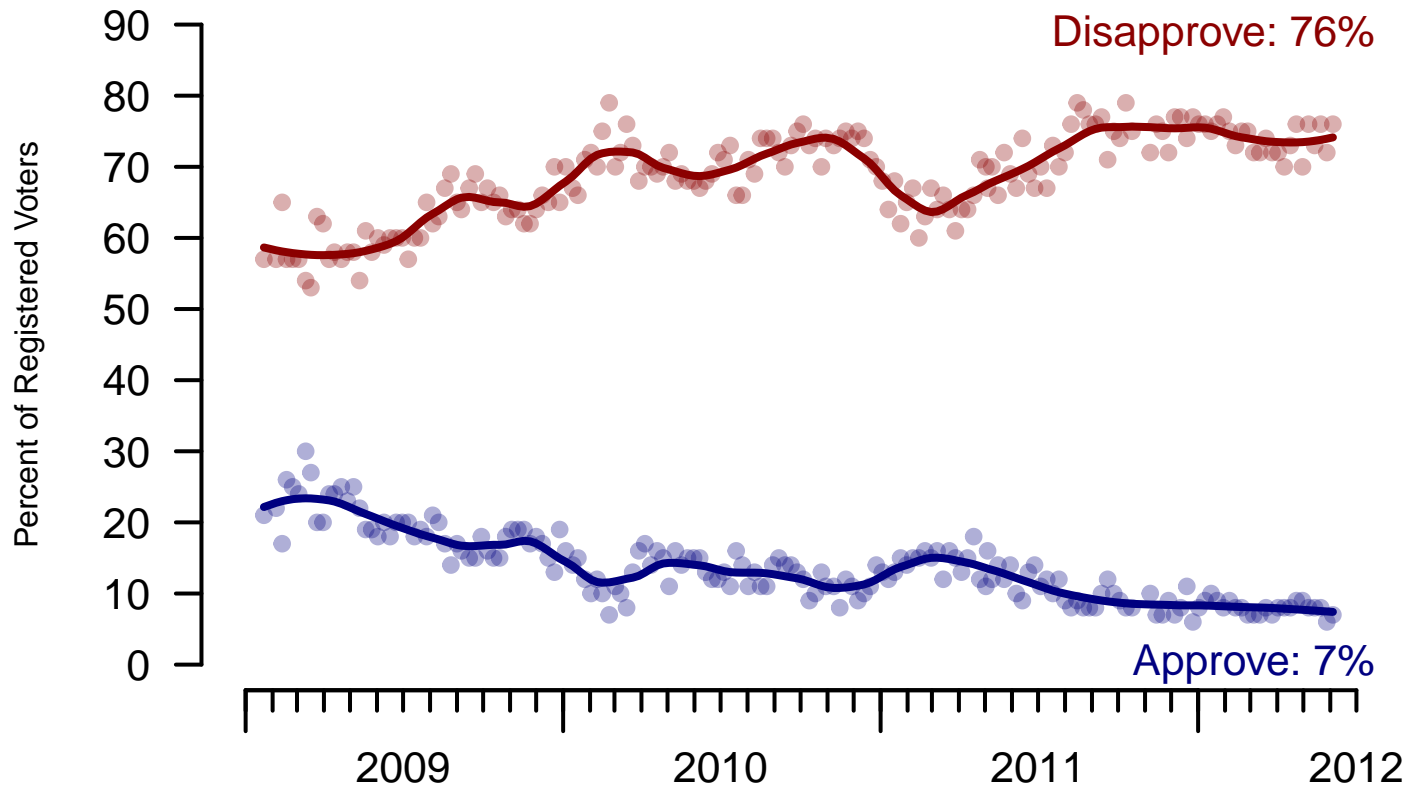


Figure 4: Congress Approval – Registered Voters

**4. Approval of U.S. Congress – This Week**

Overall, do you approve or disapprove of the way that the United States Congress is handling its job?

	Total	Age			Race			Gender		Education		
		18-29	30-64	65+	White	Black	Hispanic	Male	Female	HS or Less	Some College	College Grad
Strongly approve	2.3%	7.3%	1.1%	0.8%	1.6%	5.7%	4.7%	3.3%	1.5%	2.5%	3.7%	0.5%
Somewhat approve	6.0%	5.0%	6.8%	4.2%	6.3%	4.0%	5.6%	6.4%	5.5%	6.8%	5.1%	5.5%
Neither approve nor disapprove	15.8%	18.8%	16.4%	10.0%	14.1%	26.7%	16.3%	11.4%	19.9%	19.7%	15.9%	8.9%
Somewhat disapprove	28.3%	24.2%	28.3%	33.0%	29.7%	19.3%	27.6%	29.1%	27.5%	28.3%	28.3%	28.1%
Strongly disapprove	37.8%	23.9%	38.7%	51.7%	40.1%	28.2%	29.2%	45.8%	30.3%	28.7%	37.7%	53.5%
Not sure	9.8%	20.8%	8.7%	0.4%	8.2%	16.1%	16.6%	4.0%	15.3%	14.0%	9.2%	3.4%
Totals (Unweighted)	100.0% (999)	100.0% (129)	100.0% (702)	100.0% (168)	100.0% (781)	100.0% (128)	100.0% (90)	100.0% (466)	100.0% (533)	100.0% (388)	100.0% (321)	100.0% (290)

	Total	Party ID			Ideology			Region				Family Income		
		Dem	Rep	Ind	Lib	Mod	Con	Northeast	Midwest	South	West	Under 40	40-100	100+
Strongly approve	2.3%	3.7%	0.7%	2.5%	0.9%	3.4%	2.2%	4.2%	0.5%	1.3%	4.2%	4.6%	0.6%	0.9%
Somewhat approve	6.0%	7.5%	7.0%	6.6%	5.0%	5.0%	9.9%	4.2%	6.4%	5.6%	7.7%	5.5%	7.0%	6.7%
Neither approve nor disapprove	15.8%	17.6%	17.7%	9.2%	6.5%	16.4%	13.3%	17.0%	13.5%	15.7%	17.2%	16.8%	18.6%	3.5%
Somewhat disapprove	28.3%	28.0%	40.0%	23.7%	30.3%	24.0%	37.9%	32.6%	29.7%	26.1%	26.5%	28.4%	27.5%	32.1%
Strongly disapprove	37.8%	38.6%	30.5%	51.7%	53.1%	44.9%	33.7%	32.3%	40.5%	38.9%	38.2%	33.6%	40.3%	53.9%
Not sure	9.8%	4.7%	4.1%	6.4%	4.1%	6.3%	3.1%	9.8%	9.4%	12.4%	6.3%	11.1%	5.9%	3.0%
Totals (Unweighted)	100.0% (999)	100.0% (371)	100.0% (259)	100.0% (288)	100.0% (212)	100.0% (362)	100.0% (311)	100.0% (189)	100.0% (211)	100.0% (382)	100.0% (217)	100.0% (365)	100.0% (382)	100.0% (141)

**7. Direction of country – Historical**

Would you say things in this country today are...

	All Adults		
	Right Track	Wrong Direction	Not Sure
June 2-4, 2012	24%	59%	17%
May 26-28, 2012	27%	57%	16%
May 19-21, 2012	27%	55%	17%
May 12-14, 2012	27%	54%	19%
May 5-7, 2012	27%	58%	15%
April 28-30, 2012	27%	59%	14%
April 21-23, 2012	25%	60%	15%
April 14-17, 2012	25%	59%	16%
April 7-10, 2012	26%	58%	16%
March 31-April 3, 2012	28%	57%	16%
One Year Ago	25%	59%	16%

	Registered Voters		
	Right Track	Wrong Direction	Not Sure
June 2-4, 2012	28%	61%	11%
May 26-28, 2012	28%	58%	14%
May 19-21, 2012	29%	58%	13%
May 12-14, 2012	27%	58%	14%
May 5-7, 2012	27%	62%	10%
April 28-30, 2012	29%	59%	12%
April 21-23, 2012	29%	62%	9%
April 14-17, 2012	28%	61%	12%
April 7-10, 2012	29%	58%	13%
March 31-April 3, 2012	30%	59%	11%
One Year Ago	26%	62%	12%

## Direction of Country

"Would you say things in this country today are generally headed in the right direction or off on the wrong track?"

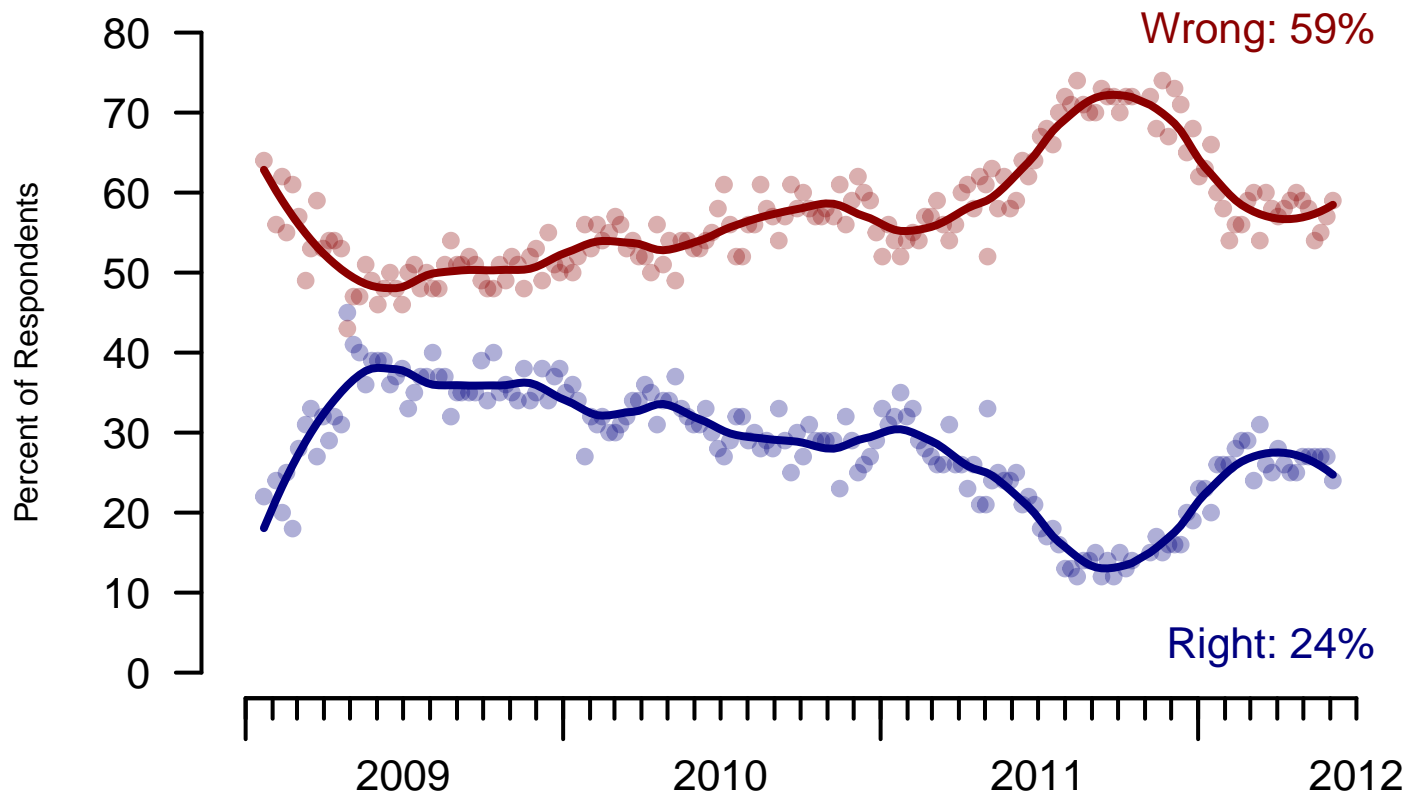


Figure 5: Direction of Country – All Adults

## Direction of Country

"Would you say things in this country today are generally headed in the right direction or off on the wrong track?"

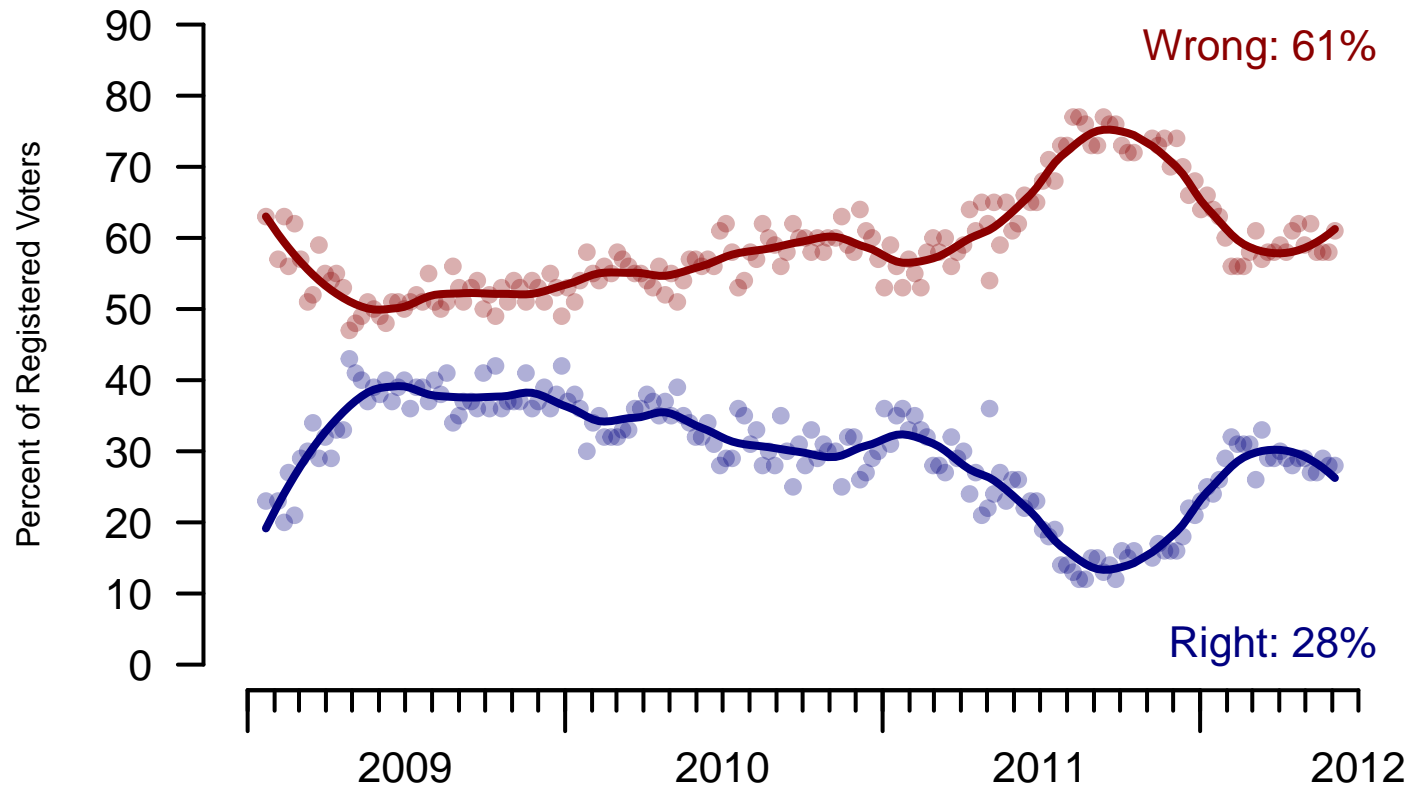


Figure 6: Direction of Country – Registered Voters

**8. Direction of Country – This Week**

Would you say things in this country today are...

	Total	Age			Race			Gender		Education		
		18-29	30-64	65+	White	Black	Hispanic	Male	Female	HS or Less	Some College	College Grad
Generally headed in the right direction	24.1%	18.4%	25.4%	26.5%	19.7%	53.5%	25.0%	24.6%	23.6%	19.8%	25.3%	30.1%
Off on the wrong track	58.8%	50.9%	60.9%	61.4%	63.6%	27.8%	56.9%	61.3%	56.5%	60.5%	57.4%	57.7%
Not sure	17.1%	30.6%	13.7%	12.1%	16.7%	18.7%	18.2%	14.0%	19.9%	19.7%	17.3%	12.3%
Totals (Unweighted)	100.0% (1,000)	100.0% (129)	100.0% (703)	100.0% (168)	100.0% (782)	100.0% (128)	100.0% (90)	100.0% (466)	100.0% (534)	100.0% (388)	100.0% (322)	100.0% (290)

	Total	Party ID			Ideology			Region				Family Income		
		Dem	Rep	Ind	Lib	Mod	Con	Northeast	Midwest	South	West	Under 40	40-100	100+
Generally headed in the right direction	24.1%	47.7%	4.0%	24.6%	49.5%	32.1%	8.6%	26.3%	24.5%	24.9%	20.5%	22.6%	28.0%	32.8%
Off on the wrong track	58.8%	34.7%	87.8%	64.2%	42.4%	50.8%	84.7%	52.0%	62.3%	61.2%	57.6%	55.1%	59.4%	61.9%
Not sure	17.1%	17.6%	8.3%	11.2%	8.1%	17.1%	6.8%	21.7%	13.2%	13.8%	22.0%	22.3%	12.6%	5.3%
Totals (Unweighted)	100.0% (1,000)	100.0% (371)	100.0% (260)	100.0% (288)	100.0% (212)	100.0% (362)	100.0% (312)	100.0% (189)	100.0% (211)	100.0% (383)	100.0% (217)	100.0% (365)	100.0% (383)	100.0% (141)

**7. Congressional Vote Intention – Historical**

If an election for U.S. Congress were being held today, who would you vote for in the district where you live?

	Registered Voters				
	The Democratic Party candidate	The Republican Party candidate	Other	Not sure	I would not vote
June 2-4, 2012	40%	40%	2%	16%	1%
May 26-28, 2012	43%	40%	3%	13%	2%
May 19-21, 2012	43%	37%	2%	15%	3%
May 12-14, 2012	39%	43%	2%	13%	3%
May 5-7, 2012	38%	39%	2%	18%	2%
April 28-30, 2012	44%	38%	1%	15%	1%
April 21-23, 2012	40%	41%	2%	15%	2%
April 14-17, 2012	44%	36%	2%	16%	2%
April 7-10, 2012	38%	37%	2%	21%	2%

## 2012 Congressional Vote Intention

"If an election for U.S. Congress were being held today, who would you vote for in the district where you live?"

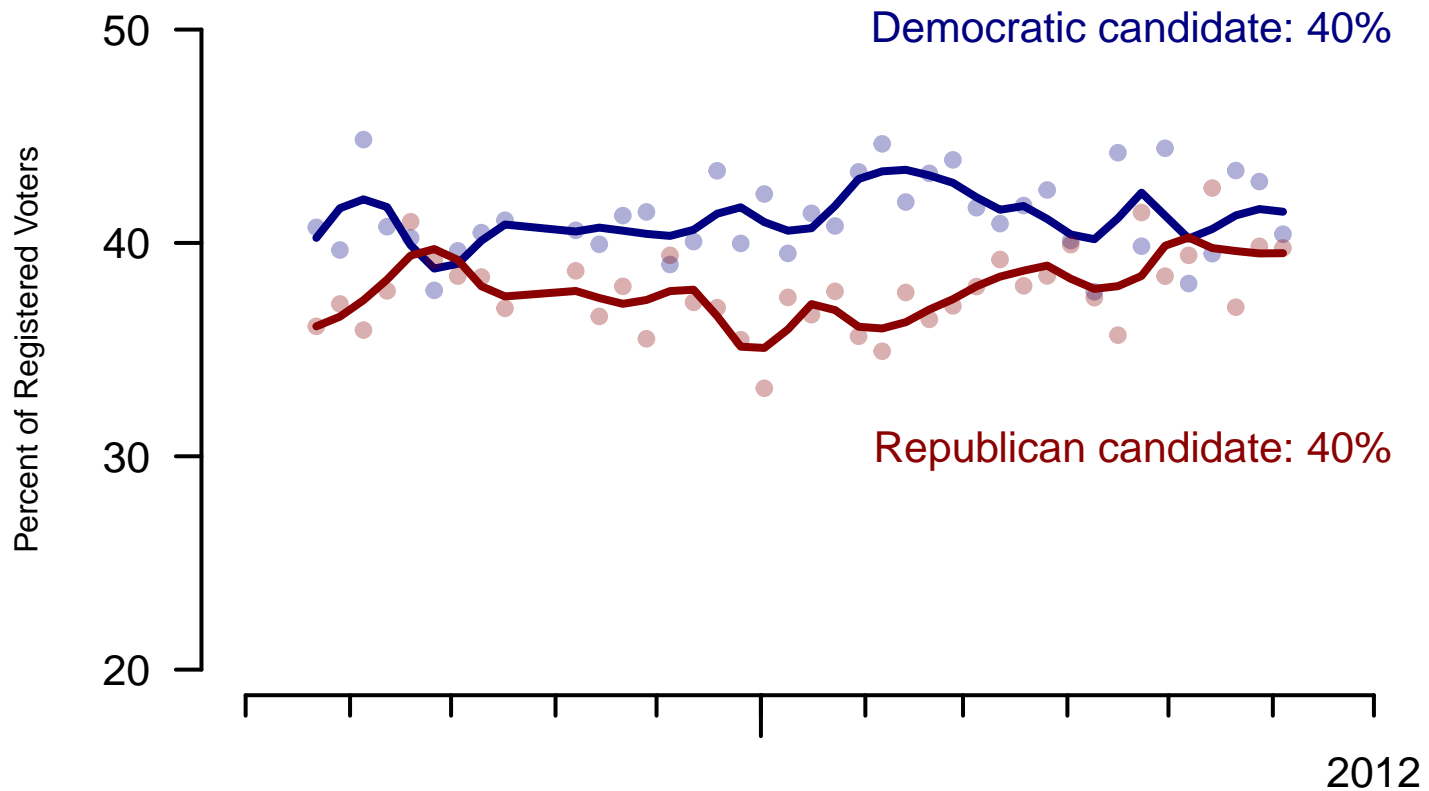


Figure 7: Congressional Vote Intention – Registered Voters

**10. Congressional Vote Intention – This Week**

If an election for U.S. Congress were being held today, who would you vote for in the district where you live?

	Total	Age			Race			Gender		Education		
		18-29	30-64	65+	White	Black	Hispanic	Male	Female	HS or Less	Some College	College Grad
The Democratic Party candidate	40.4%	39.7%	40.0%	42.1%	33.6%	78.5%	46.9%	39.1%	41.6%	33.9%	42.4%	45.3%
The Republican Party candidate	39.8%	33.2%	38.9%	47.0%	45.8%	7.4%	31.6%	42.1%	37.5%	44.4%	38.2%	36.4%
Other	2.4%	6.4%	1.8%	1.3%	1.5%	1.8%	10.8%	3.2%	1.7%	3.8%	1.1%	2.3%
Not sure	16.1%	17.8%	18.1%	9.0%	17.9%	9.9%	9.6%	14.5%	17.6%	15.6%	17.2%	15.6%
I would not vote	1.3%	2.8%	1.2%	0.5%	1.1%	2.5%	1.1%	1.0%	1.6%	2.3%	1.1%	0.4%
Totals (Unweighted)	100.0% (838)	100.0% (90)	100.0% (592)	100.0% (156)	100.0% (636)	100.0% (119)	100.0% (83)	100.0% (413)	100.0% (425)	100.0% (282)	100.0% (281)	100.0% (275)

	Total	Party ID			Ideology			Region				Family Income		
		Dem	Rep	Ind	Lib	Mod	Con	Northeast	Midwest	South	West	Under 40	40-100	100+
The Democratic Party candidate	40.4%	81.7%	2.2%	31.8%	89.7%	48.1%	11.4%	45.2%	40.4%	37.8%	40.7%	44.8%	40.5%	38.9%
The Republican Party candidate	39.8%	5.4%	86.6%	37.0%	0.6%	27.2%	74.1%	29.2%	46.9%	41.8%	37.7%	30.7%	42.0%	49.7%
Other	2.4%	0.7%	1.9%	5.6%	1.4%	0.9%	4.2%	6.0%	0.9%	2.2%	1.3%	0.9%	1.6%	2.5%
Not sure	16.1%	11.2%	9.2%	25.0%	7.8%	23.0%	10.0%	18.5%	9.3%	16.8%	20.4%	20.8%	15.3%	8.3%
I would not vote	1.3%	1.0%	0.2%	0.7%	0.5%	0.8%	0.3%	1.1%	2.5%	1.4%	—	2.8%	0.6%	0.5%
Totals (Unweighted)	100.0% (838)	100.0% (333)	100.0% (233)	100.0% (247)	100.0% (187)	100.0% (316)	100.0% (286)	100.0% (154)	100.0% (178)	100.0% (331)	100.0% (175)	100.0% (277)	100.0% (335)	100.0% (136)

<b>Sponsorship</b>	<i>The Economist</i>
<b>Fieldwork</b>	YouGov
<b>Interviewing Dates</b>	June 2-4, 2012
<b>Target population</b>	U.S. citizens, aged 18 and over.
<b>Sampling method</b>	Respondents were selected from YouGov's PollingPoint panel using sample matching. A random sample (stratified by age, gender, race, education, and region) was selected from the 2005–2007 American Community Study. Voter registration, turnout, religion, news interest, minor party identification, and non-placement on an ideology scale, were imputed from the 2008 Current Population Survey Registration and Voting Supplement and the Pew Religion in American Life Survey. Matching respondents were selected from the PollingPoint panel, an opt-in Internet panel.
<b>Weighting</b>	The sample was weighted using propensity scores based on age, gender, race, education, news interest, voter registration, and non-placement on an ideology scale. The weights range from 0.26 to 7.01, with a mean of one and a standard deviation of 0.9.
<b>Number of respondents</b>	1,000
<b>Margin of error</b>	± 4.1% (adjusted for weighting)
<b>Margin of error (Registered Voters)</b>	± 4.5% (adjusted for weighting)
<b>Survey mode</b>	Web-based interviews
<b>Full results</b>	Available online at <a href="http://today.yougov.com/news/categories/economist/">http://today.yougov.com/news/categories/economist/</a> .