

Interviewing: May 19-21, 2012
Sample: 1000 Adults nationwide online
757 registered voters nationwide online



806 D Street, SE
Washington, DC 20003

Contact:
Thomas Riehle
Ph: (202) 544-2550

The Economist/YouGov Poll

Weekly Tracking

For immediate release

1. Approval of Obama as President – Historical

Do you approve or disapprove of the way Barack Obama is handling his job as President?

All Adults							
	Total Approve	Total Disapprove	Strongly Approve	Somewhat Approve	Somewhat Disapprove	Strongly Disapprove	Not Sure
May 19-21, 2012	44%	50%	17%	27%	12%	38%	6%
May 12-14, 2012	42%	51%	16%	26%	13%	38%	7%
May 5-7, 2012	43%	49%	16%	27%	14%	35%	8%
April 28-30, 2012	46%	49%	19%	27%	14%	35%	5%
April 21-23, 2012	43%	51%	16%	27%	13%	38%	7%
April 14-17, 2012	41%	51%	17%	24%	15%	36%	7%
April 7-10, 2012	41%	50%	17%	24%	13%	37%	9%
March 31-April 3, 2012	41%	49%	16%	25%	13%	36%	9%
March 24-27, 2012	42%	49%	16%	26%	12%	37%	9%
March 17-20, 2012	42%	51%	16%	26%	15%	36%	7%
One Year Ago	45%	49%	18%	27%	15%	34%	6%

Registered Voters							
	Total Approve	Total Disapprove	Strongly Approve	Somewhat Approve	Somewhat Disapprove	Strongly Disapprove	Not Sure
May 19-21, 2012	46%	51%	20%	26%	11%	40%	3%
May 12-14, 2012	43%	54%	17%	26%	12%	42%	3%
May 5-7, 2012	44%	54%	19%	25%	12%	42%	2%
April 28-30, 2012	45%	52%	19%	26%	12%	40%	3%
April 21-23, 2012	44%	54%	18%	26%	10%	44%	2%
April 14-17, 2012	44%	53%	18%	26%	13%	40%	3%
April 7-10, 2012	42%	54%	20%	22%	11%	43%	4%
March 31-April 3, 2012	44%	53%	18%	26%	13%	40%	3%
March 24-27, 2012	43%	52%	18%	25%	11%	41%	5%
March 17-20, 2012	45%	51%	19%	26%	12%	39%	4%
One Year Ago	46%	51%	21%	25%	13%	38%	3%

Obama Approval

"Do you approve or disapprove of the way Barack Obama is handling his job as President?"

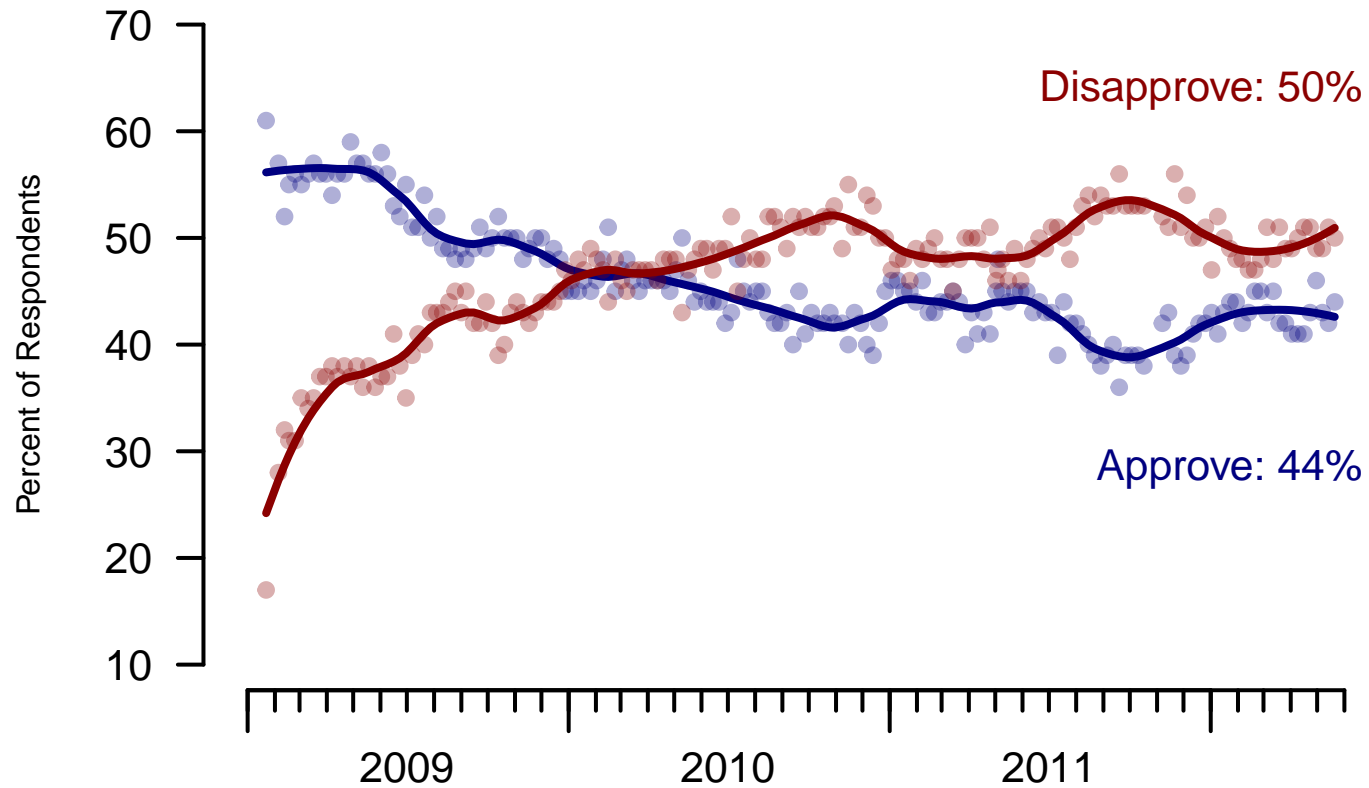


Figure 1: Obama Approval – All Adults

Obama Approval

"Do you approve or disapprove of the way Barack Obama is handling his job as President?"

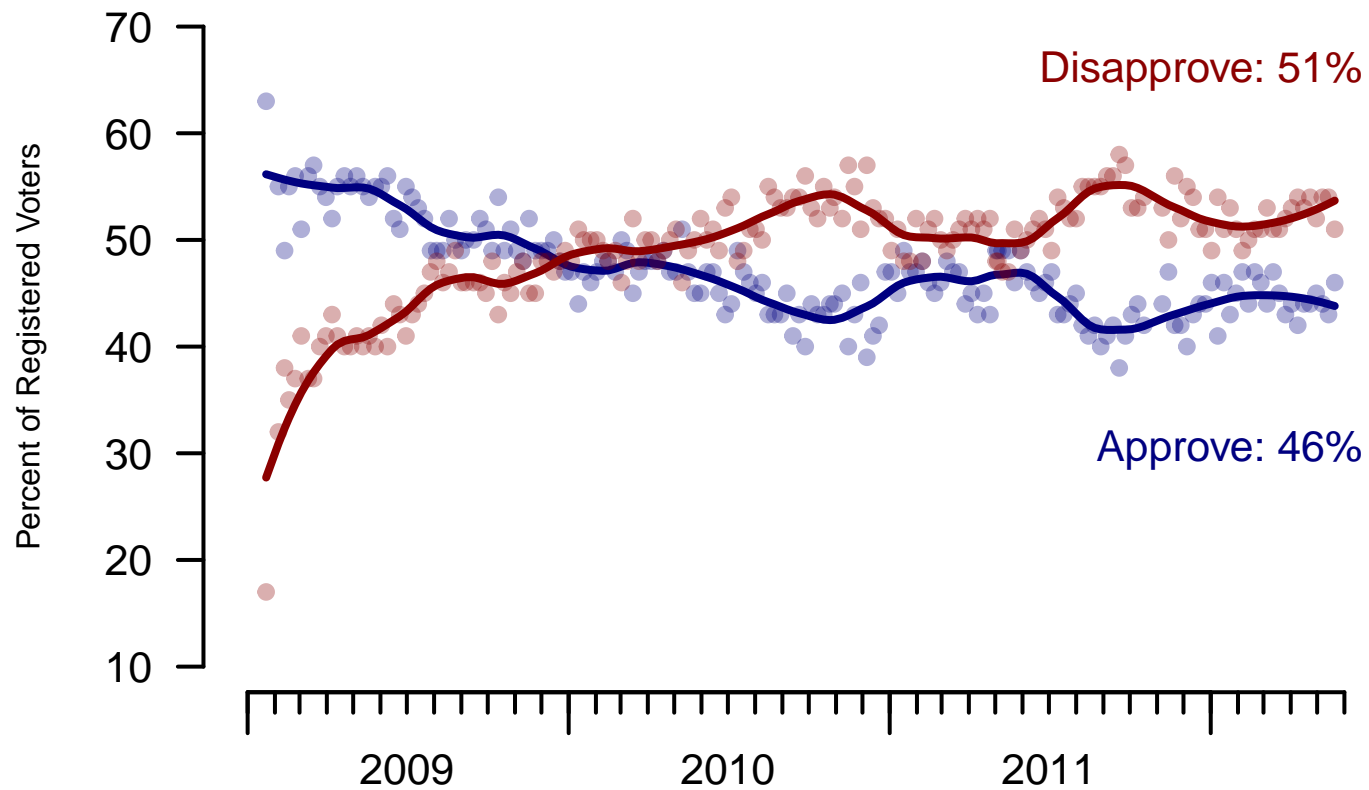


Figure 2: Obama Approval – Registered Voters

2. Approval of Obama as President – This Week

Do you approve or disapprove of the way Barack Obama is handling his job as President?

	Age				Race			Gender		Education		
	Total	18-29	30-64	65+	White	Black	Hispanic	Male	Female	HS or Less	Some College	College Grad
Strongly Approve	17.0%	11.5%	16.8%	24.0%	12.9%	41.7%	22.0%	13.5%	20.2%	15.3%	21.2%	14.5%
Somewhat Approve	26.9%	36.4%	25.6%	19.8%	25.3%	39.1%	25.7%	24.8%	28.7%	23.7%	28.9%	29.4%
Somewhat Disapprove	11.9%	10.6%	13.3%	8.5%	12.3%	4.8%	16.3%	13.6%	10.3%	10.6%	9.1%	17.2%
Strongly Disapprove	38.0%	28.8%	38.5%	47.4%	44.4%	2.8%	25.3%	43.6%	32.8%	39.7%	36.0%	37.8%
Not Sure	6.3%	12.7%	5.8%	0.4%	5.1%	11.7%	10.6%	4.5%	8.0%	10.7%	4.9%	1.1%
Totals (Unweighted)	100.0% (1,000)	100.0% (170)	100.0% (668)	100.0% (162)	100.0% (784)	100.0% (126)	100.0% (90)	100.0% (455)	100.0% (545)	100.0% (371)	100.0% (334)	100.0% (295)

	Party ID				Ideology			Region				Family Income		
	Total	Dem	Rep	Ind	Lib	Mod	Con	Northeast	Midwest	South	West	Under 40	40-100	100+
Strongly Approve	17.0%	35.2%	0.8%	14.0%	41.5%	21.1%	1.7%	17.4%	18.5%	15.7%	17.0%	16.4%	18.9%	15.1%
Somewhat Approve	26.9%	44.7%	5.4%	27.3%	42.9%	36.7%	5.8%	36.2%	29.4%	19.5%	27.6%	26.3%	27.4%	28.2%
Somewhat Disapprove	11.9%	8.8%	8.6%	17.5%	9.5%	15.9%	10.2%	12.0%	10.1%	9.2%	17.6%	13.5%	10.5%	13.4%
Strongly Disapprove	38.0%	6.2%	83.3%	37.7%	3.9%	23.2%	78.1%	27.2%	35.2%	48.8%	33.6%	34.4%	41.4%	40.8%
Not Sure	6.3%	5.1%	1.9%	3.5%	2.2%	3.2%	4.2%	7.2%	6.8%	6.9%	4.2%	9.4%	1.8%	2.5%
Totals (Unweighted)	100.0% (1,000)	100.0% (389)	100.0% (235)	100.0% (306)	100.0% (229)	100.0% (349)	100.0% (302)	100.0% (178)	100.0% (221)	100.0% (363)	100.0% (238)	100.0% (375)	100.0% (382)	100.0% (131)

3. Approval of U.S. Congress – Historical

Overall, do you approve or disapprove of the way that the United States Congress is handling its job?

All Adults

	Total Approve	Total Disapprove	Strongly Approve	Somewhat Approve	Neutral	Somewhat Disapprove	Strongly Disapprove	Not Sure
May 19-21, 2012	7%	69%	2%	5%	16%	24%	45%	7%
May 12-14, 2012	9%	65%	2%	7%	18%	23%	42%	7%
May 5-7, 2012	8%	69%	1%	7%	14%	25%	44%	9%
April 28-30, 2012	8%	67%	1%	7%	16%	23%	44%	9%
April 21-23, 2012	9%	68%	1%	8%	13%	27%	41%	10%
April 14-17, 2012	8%	66%	2%	6%	16%	25%	41%	10%
April 7-10, 2012	8%	63%	1%	7%	15%	25%	38%	14%
March 31-April 3, 2012	8%	65%	2%	6%	14%	24%	41%	13%
March 24-27, 2012	6%	65%	1%	5%	16%	24%	41%	12%
March 17-20, 2012	8%	67%	1%	7%	15%	24%	43%	9%
One Year Ago	12%	65%	1%	11%	16%	29%	36%	6%

Registered Voters

	Total Approve	Total Disapprove	Strongly Approve	Somewhat Approve	Neutral	Somewhat Disapprove	Strongly Disapprove	Not Sure
May 19-21, 2012	8%	76%	2%	6%	13%	25%	51%	4%
May 12-14, 2012	8%	73%	1%	7%	15%	25%	48%	4%
May 5-7, 2012	8%	76%	1%	7%	11%	27%	49%	4%
April 28-30, 2012	9%	70%	1%	8%	15%	24%	46%	5%
April 21-23, 2012	9%	76%	1%	8%	11%	30%	46%	4%
April 14-17, 2012	8%	73%	2%	6%	14%	27%	46%	5%
April 7-10, 2012	8%	70%	1%	7%	13%	27%	43%	7%
March 31-April 3, 2012	8%	72%	2%	6%	12%	26%	46%	7%
March 24-27, 2012	7%	72%	1%	6%	13%	27%	45%	7%
March 17-20, 2012	8%	74%	1%	7%	12%	26%	48%	5%
One Year Ago	12%	72%	1%	11%	14%	32%	40%	3%

Congress Approval

"Do you approve of the way the U.S. Congress is handling its job?"

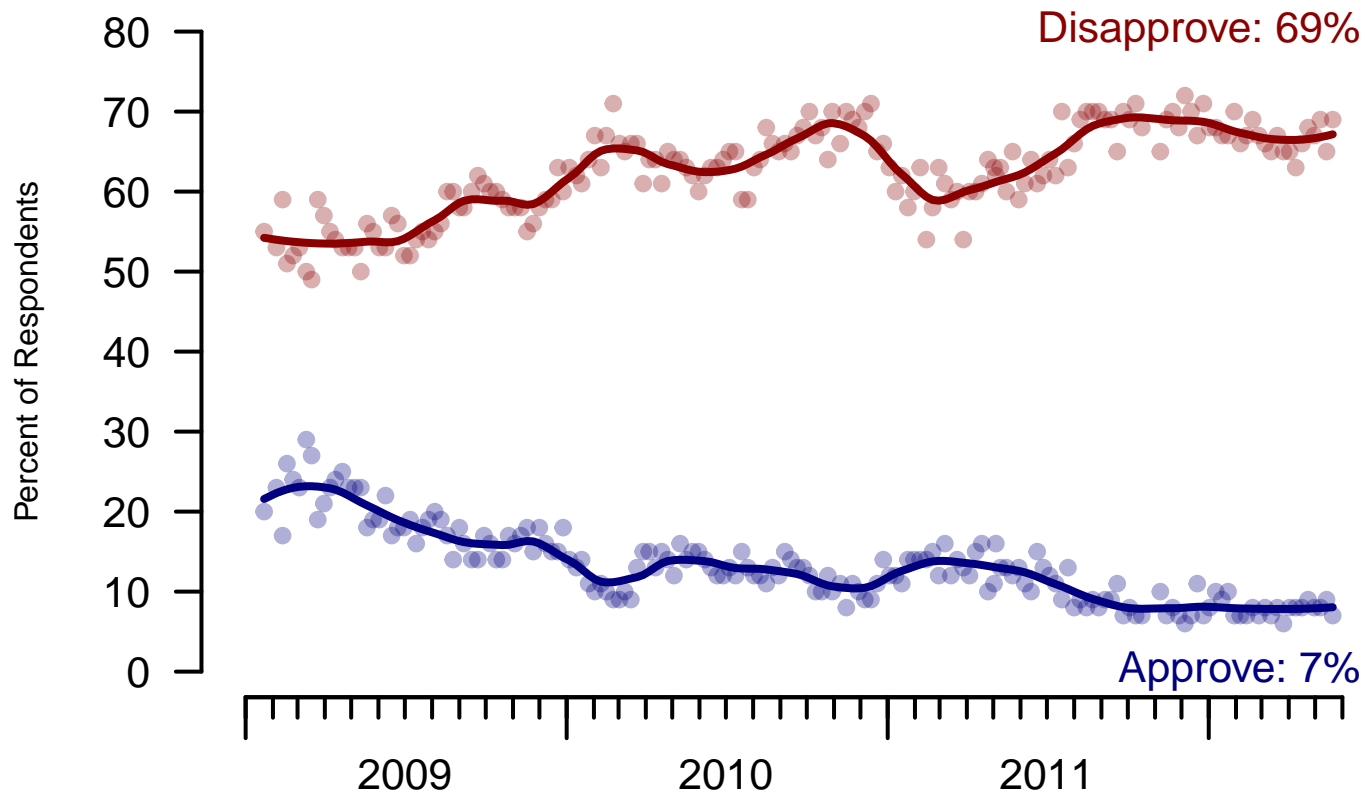


Figure 3: Congress Approval – All Adults

Congress Approval

"Do you approve of the way the
U.S. Congress is handling its job?"

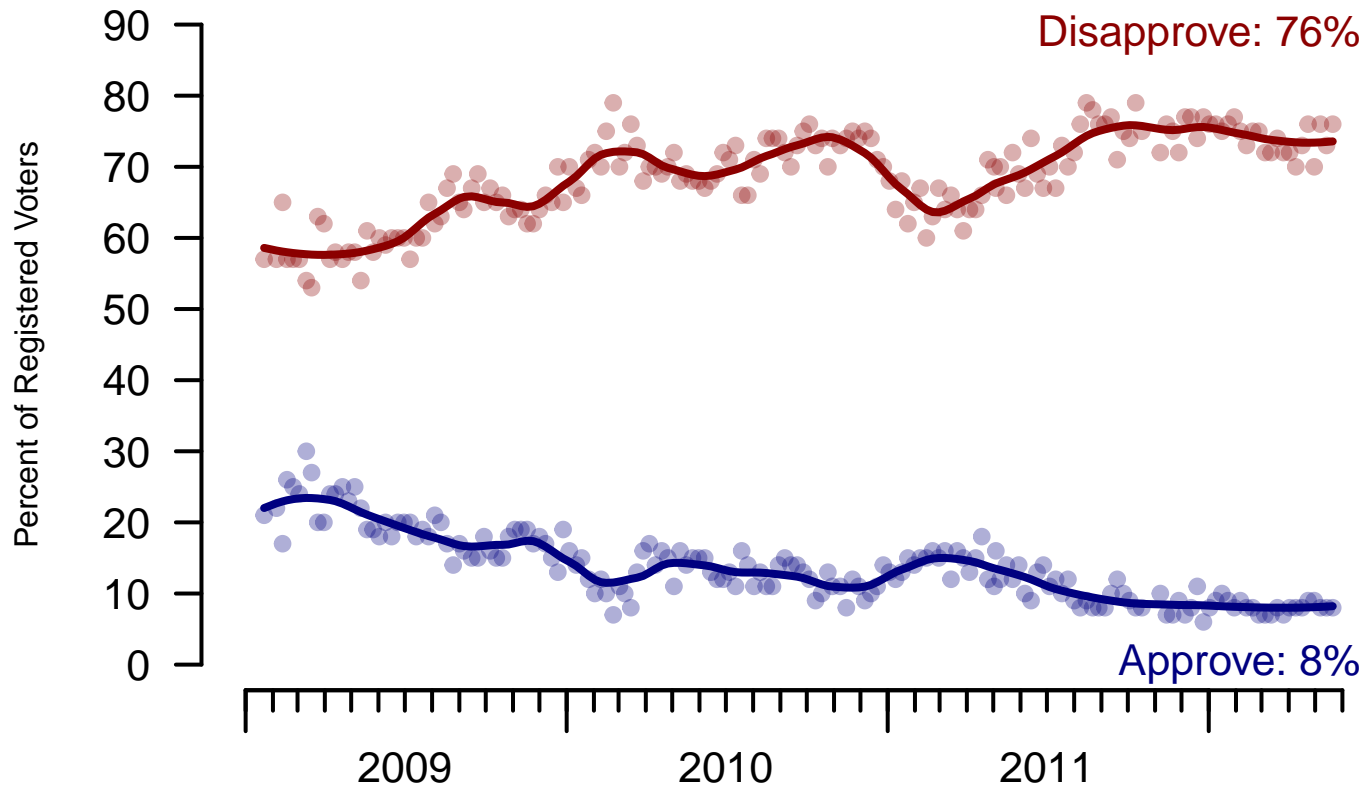


Figure 4: Congress Approval – Registered Voters

4. Approval of U.S. Congress – This Week

Overall, do you approve or disapprove of the way that the United States Congress is handling its job?

	Age				Race			Gender		Education		
	Total	18-29	30-64	65+	White	Black	Hispanic	Male	Female	HS or Less	Some College	College Grad
Strongly approve	1.6%	1.4%	1.8%	0.9%	1.4%	2.3%	2.5%	1.6%	1.6%	1.0%	1.9%	2.1%
Somewhat approve	5.5%	2.9%	6.4%	5.4%	5.0%	7.5%	7.3%	4.9%	6.0%	6.1%	7.3%	2.3%
Neither approve nor disapprove	16.1%	24.7%	15.0%	9.5%	13.8%	29.2%	20.1%	12.3%	19.6%	19.8%	14.4%	12.1%
Somewhat disapprove	24.4%	20.2%	25.7%	25.1%	25.8%	15.3%	23.5%	22.8%	25.9%	21.2%	25.4%	28.3%
Strongly disapprove	45.1%	37.9%	44.1%	57.1%	48.1%	29.9%	36.7%	53.4%	37.5%	39.9%	44.6%	53.9%
Not sure	7.4%	12.9%	7.1%	1.9%	6.0%	15.8%	9.9%	5.1%	9.5%	12.0%	6.4%	1.3%
Totals (Unweighted)	100.0% (1,000)	100.0% (170)	100.0% (668)	100.0% (162)	100.0% (784)	100.0% (126)	100.0% (90)	100.0% (455)	100.0% (545)	100.0% (371)	100.0% (334)	100.0% (295)

	Party ID			Ideology			Region				Family Income			
	Total	Dem	Rep	Ind	Lib	Mod	Con	Northeast	Midwest	South	West	Under 40	40-100	100+
Strongly approve	1.6%	1.9%	1.7%	1.5%	2.1%	1.9%	1.2%	0.6%	1.7%	1.4%	2.5%	1.7%	2.2%	0.8%
Somewhat approve	5.5%	6.9%	7.4%	3.1%	3.2%	6.5%	7.0%	3.1%	7.9%	5.8%	4.5%	5.8%	7.0%	2.6%
Neither approve nor disapprove	16.1%	21.4%	18.7%	8.2%	12.1%	13.0%	16.0%	23.8%	13.1%	16.1%	12.4%	16.4%	16.3%	14.5%
Somewhat disapprove	24.4%	20.5%	35.2%	22.6%	21.0%	20.5%	34.1%	17.4%	23.2%	27.9%	26.3%	24.7%	27.4%	22.8%
Strongly disapprove	45.1%	42.8%	35.3%	60.2%	59.1%	52.9%	37.7%	45.1%	45.4%	41.9%	49.6%	39.3%	45.0%	58.7%
Not sure	7.4%	6.6%	1.7%	4.3%	2.6%	5.2%	3.9%	9.9%	8.7%	6.9%	4.8%	12.2%	2.1%	0.6%
Totals (Unweighted)	100.0% (1,000)	100.0% (389)	100.0% (235)	100.0% (306)	100.0% (229)	100.0% (349)	100.0% (302)	100.0% (178)	100.0% (221)	100.0% (363)	100.0% (238)	100.0% (375)	100.0% (382)	100.0% (131)

7. Direction of country – Historical

Would you say things in this country today are...

	All Adults		
	Right Track	Wrong Direction	Not Sure
May 19-21, 2012	27%	55%	17%
May 12-14, 2012	27%	54%	19%
May 5-7, 2012	27%	58%	15%
April 28-30, 2012	27%	59%	14%
April 21-23, 2012	25%	60%	15%
April 14-17, 2012	25%	59%	16%
April 7-10, 2012	26%	58%	16%
March 31-April 3, 2012	28%	57%	16%
March 24-27, 2012	25%	58%	17%
March 17-20, 2012	26%	60%	15%
One Year Ago	24%	62%	14%

	Registered Voters		
	Right Track	Wrong Direction	Not Sure
May 19-21, 2012	29%	58%	13%
May 12-14, 2012	27%	58%	14%
May 5-7, 2012	27%	62%	10%
April 28-30, 2012	29%	59%	12%
April 21-23, 2012	29%	62%	9%
April 14-17, 2012	28%	61%	12%
April 7-10, 2012	29%	58%	13%
March 31-April 3, 2012	30%	59%	11%
March 24-27, 2012	29%	58%	13%
March 17-20, 2012	29%	58%	12%
One Year Ago	23%	65%	12%

Direction of Country

"Would you say things in this country today are generally headed in the right direction or off on the wrong track?"

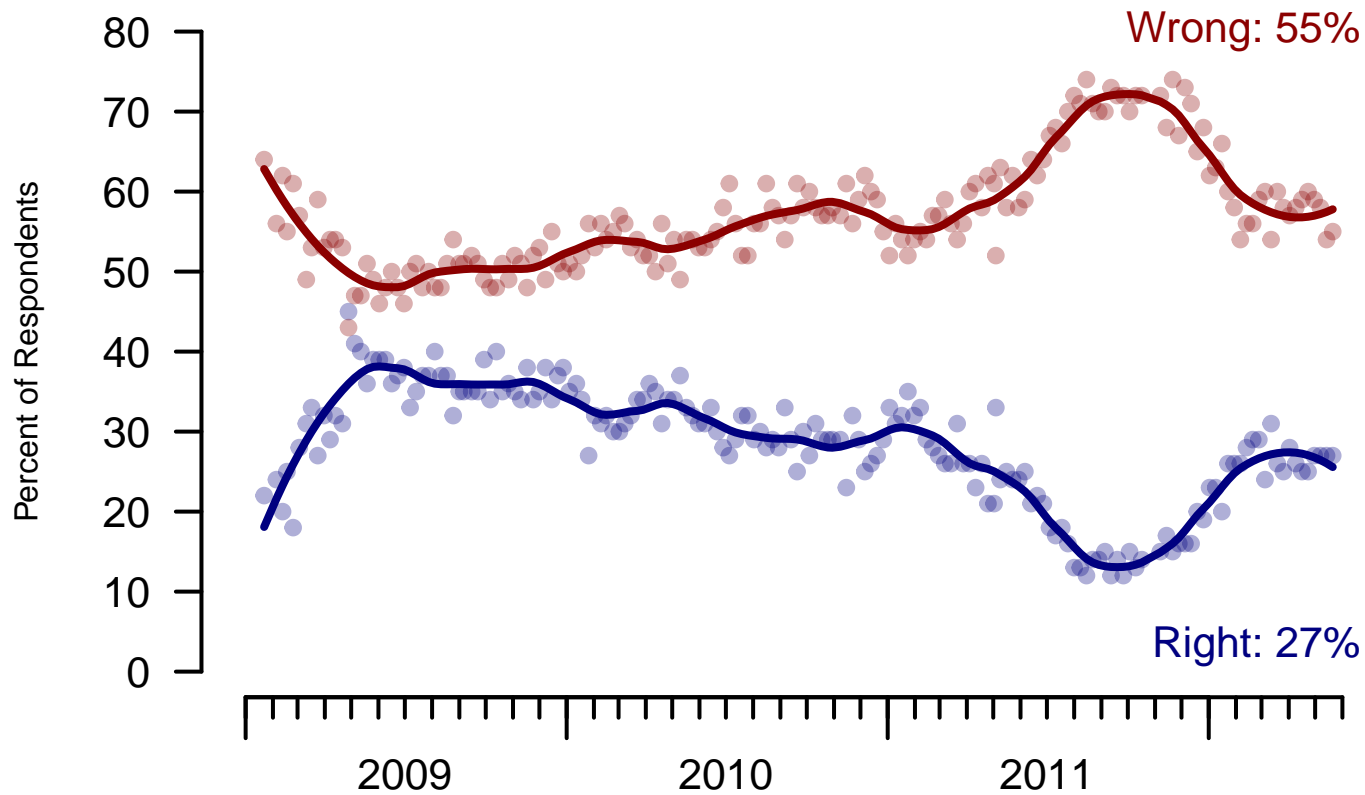


Figure 5: Direction of Country – All Adults

Direction of Country

"Would you say things in this country today are generally headed in the right direction or off on the wrong track?"

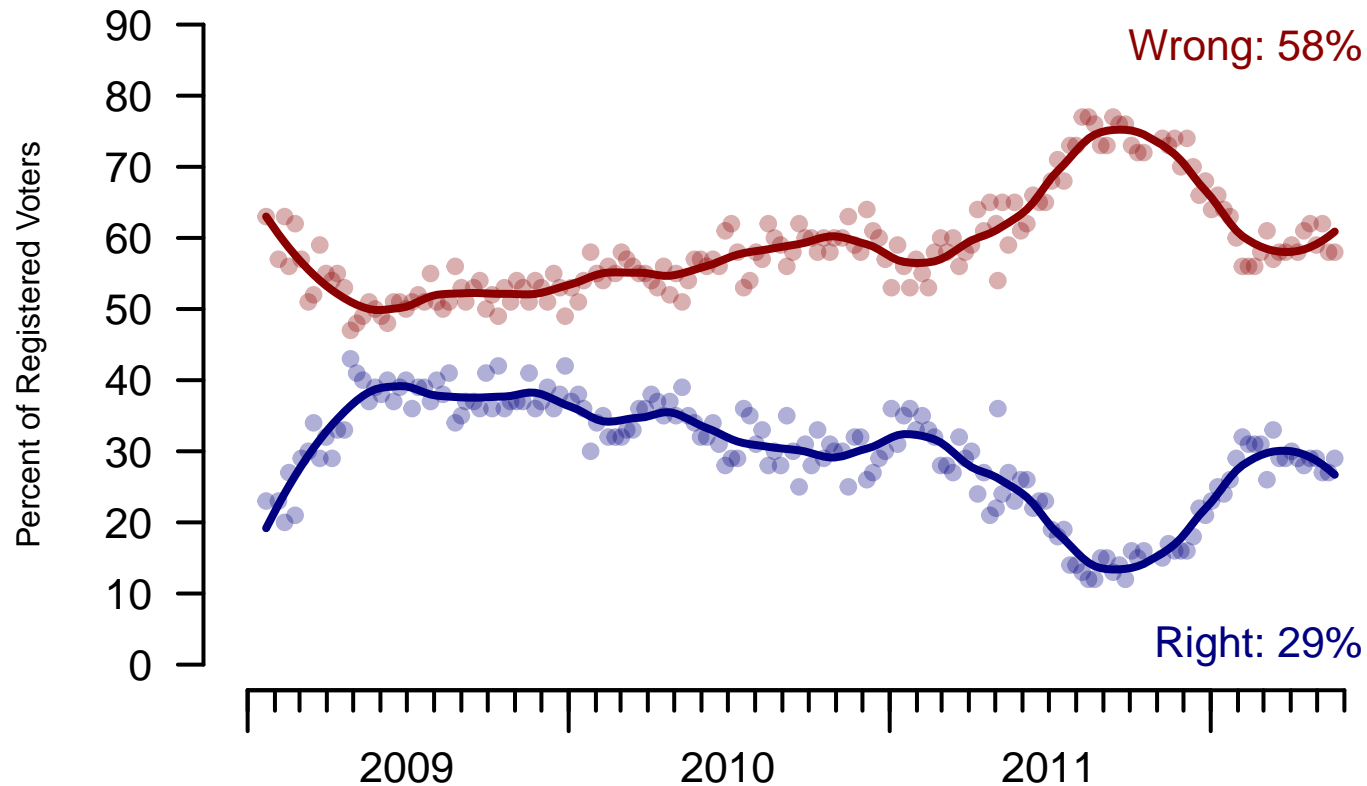


Figure 6: Direction of Country – Registered Voters

8. Direction of Country – This Week

Would you say things in this country today are...

	Total	Age			Race			Gender		Education		
		18-29	30-64	65+	White	Black	Hispanic	Male	Female	HS or Less	Some College	College Grad
Generally headed in the right direction	27.1%	26.3%	26.8%	28.9%	22.1%	57.1%	33.8%	24.8%	29.1%	22.5%	30.7%	30.1%
Off on the wrong track	55.5%	44.5%	58.1%	59.6%	62.1%	15.3%	46.8%	61.3%	50.1%	56.3%	51.7%	58.8%
Not sure	17.4%	29.2%	15.1%	11.4%	15.8%	27.6%	19.4%	13.9%	20.7%	21.2%	17.6%	11.2%
Totals (Unweighted)	100.0% (997)	100.0% (169)	100.0% (668)	100.0% (160)	100.0% (781)	100.0% (126)	100.0% (90)	100.0% (454)	100.0% (543)	100.0% (369)	100.0% (333)	100.0% (295)

	Total	Party ID			Ideology			Region				Family Income		
		Dem	Rep	Ind	Lib	Mod	Con	Northeast	Midwest	South	West	Under 40	40-100	100+
Generally headed in the right direction	27.1%	51.2%	5.5%	23.9%	54.2%	37.2%	5.6%	28.9%	29.7%	24.0%	27.6%	23.9%	31.0%	30.9%
Off on the wrong track	55.5%	25.7%	89.8%	62.6%	24.2%	47.3%	87.9%	48.1%	50.3%	61.6%	57.7%	51.6%	58.4%	62.0%
Not sure	17.4%	23.0%	4.7%	13.5%	21.6%	15.5%	6.5%	23.0%	20.0%	14.4%	14.7%	24.4%	10.6%	7.1%
Totals (Unweighted)	100.0% (997)	100.0% (388)	100.0% (233)	100.0% (306)	100.0% (228)	100.0% (349)	100.0% (301)	100.0% (178)	100.0% (220)	100.0% (361)	100.0% (238)	100.0% (374)	100.0% (381)	100.0% (131)

7. Congressional Vote Intention – Historical

If an election for U.S. Congress were being held today, who would you vote for in the district where you live?

	Registered Voters				
	The Democratic Party candidate	The Republican Party candidate	Other	Not sure	I would not vote
May 19-21, 2012	43%	37%	2%	15%	3%
May 12-14, 2012	39%	43%	2%	13%	3%
May 5-7, 2012	38%	39%	2%	18%	2%
April 28-30, 2012	44%	38%	1%	15%	1%
April 21-23, 2012	40%	41%	2%	15%	2%
April 14-17, 2012	44%	36%	2%	16%	2%
April 7-10, 2012	38%	37%	2%	21%	2%
March 31-April 3, 2012	40%	40%	2%	17%	1%
March 24-27, 2012	42%	38%	2%	15%	2%

2012 Congressional Vote Intention

"If an election for U.S. Congress were being held today, who would you vote for in the district where you live?"

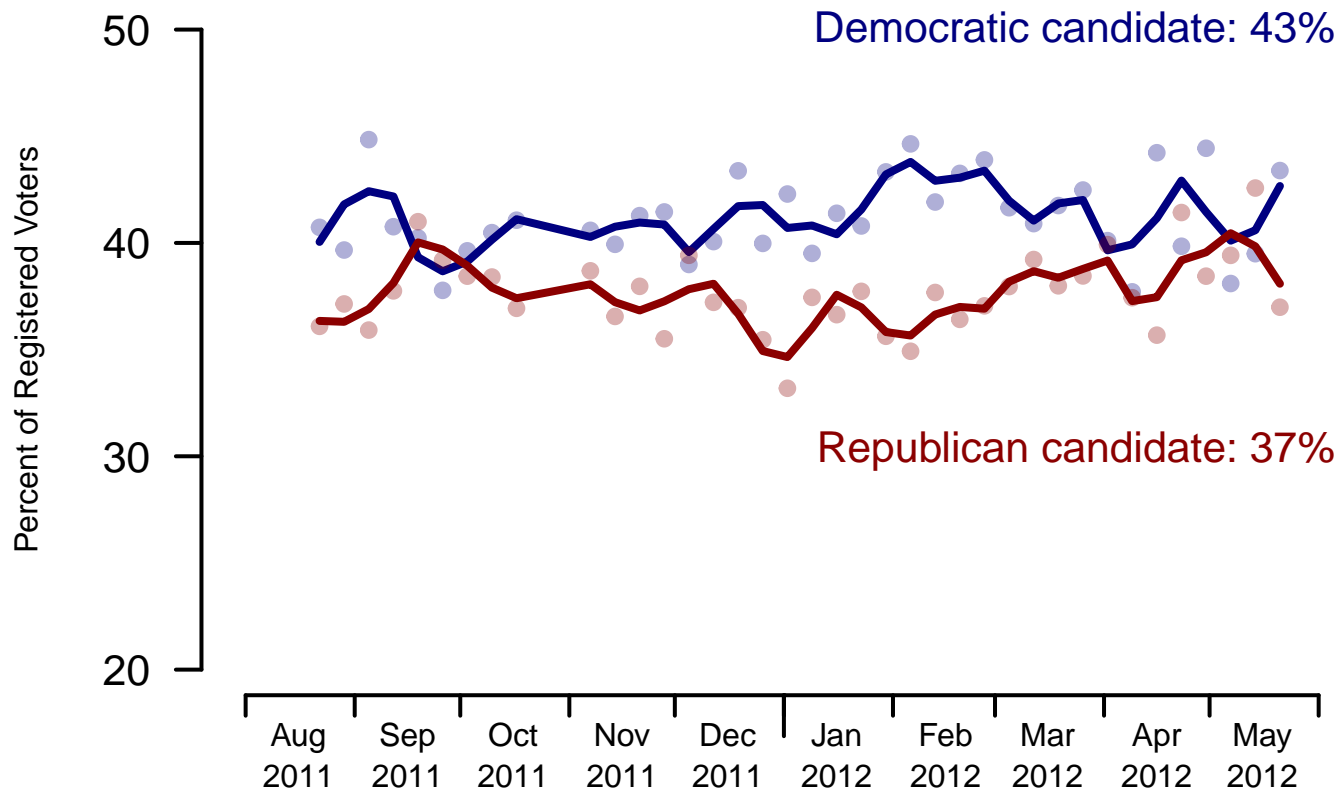


Figure 7: Congressional Vote Intention – Registered Voters

10. Congressional Vote Intention – This Week

If an election for U.S. Congress were being held today, who would you vote for in the district where you live?

	Total	Age			Race			Gender		Education		
		18-29	30-64	65+	White	Black	Hispanic	Male	Female	HS or Less	Some College	College Grad
The Democratic Party candidate	43.4%	44.9%	42.6%	44.6%	37.4%	80.9%	53.1%	37.4%	48.8%	44.5%	44.3%	41.0%
The Republican Party candidate	37.0%	33.5%	36.9%	39.9%	42.4%	2.5%	29.2%	43.7%	30.9%	34.7%	40.0%	36.6%
Other	2.1%	3.8%	1.8%	1.7%	2.5%	—	0.5%	3.4%	0.9%	1.2%	2.6%	2.6%
Not sure	14.7%	9.0%	16.6%	13.4%	15.5%	10.7%	12.8%	14.0%	15.4%	15.7%	10.7%	18.0%
I would not vote	2.8%	8.7%	2.1%	0.5%	2.2%	5.9%	4.4%	1.4%	4.1%	3.9%	2.4%	1.8%
Totals (Unweighted)	100.0% (851)	100.0% (126)	100.0% (576)	100.0% (149)	100.0% (663)	100.0% (110)	100.0% (78)	100.0% (406)	100.0% (445)	100.0% (291)	100.0% (289)	100.0% (271)

	Total	Party ID			Ideology			Region				Family Income		
		Dem	Rep	Ind	Lib	Mod	Con	Northeast	Midwest	South	West	Under 40	40-100	100+
The Democratic Party candidate	43.4%	84.9%	1.5%	35.8%	90.2%	54.6%	5.4%	51.9%	45.6%	40.7%	37.6%	45.2%	42.8%	39.9%
The Republican Party candidate	37.0%	2.2%	84.2%	35.1%	1.8%	20.0%	79.1%	24.8%	34.1%	43.7%	40.4%	31.0%	40.9%	41.0%
Other	2.1%	—	1.4%	4.9%	1.1%	3.2%	1.9%	1.8%	3.4%	0.6%	3.3%	1.1%	0.8%	5.0%
Not sure	14.7%	9.8%	10.6%	23.5%	6.1%	20.4%	11.8%	16.7%	15.3%	12.7%	15.6%	18.8%	12.4%	14.1%
I would not vote	2.8%	3.1%	2.4%	0.7%	0.8%	1.9%	1.8%	4.8%	1.6%	2.4%	3.2%	3.9%	3.1%	—
Totals (Unweighted)	100.0% (851)	100.0% (351)	100.0% (215)	100.0% (257)	100.0% (205)	100.0% (310)	100.0% (270)	100.0% (150)	100.0% (194)	100.0% (308)	100.0% (199)	100.0% (292)	100.0% (342)	100.0% (124)

Sponsorship	<i>The Economist</i>
Fieldwork	YouGov
Interviewing Dates	May 19-21, 2012
Target population	U.S. citizens, aged 18 and over.
Sampling method	Respondents were selected from YouGov's PollingPoint panel using sample matching. A random sample (stratified by age, gender, race, education, and region) was selected from the 2005–2007 American Community Study. Voter registration, turnout, religion, news interest, minor party identification, and non-placement on an ideology scale, were imputed from the 2008 Current Population Survey Registration and Voting Supplement and the Pew Religion in American Life Survey. Matching respondents were selected from the PollingPoint panel, an opt-in Internet panel.
Weighting	The sample was weighted using propensity scores based on age, gender, race, education, news interest, voter registration, and non-placement on an ideology scale. The weights range from 0.11 to 7, with a mean of one and a standard deviation of 0.8.
Number of respondents	1,000
Margin of error	± 4% (adjusted for weighting)
Margin of error (Registered Voters)	± 4.4% (adjusted for weighting)
Survey mode	Web-based interviews
Full results	Available online at http://today.yougov.com/news/categories/economist/ .